

# SR 99 Kent, SR 99/S 272<sup>nd</sup> St to SR 516 Vic – Paving & ADA Compliance

Fall 2025 online open house summary

## Overview

WSDOT is advancing a pavement preservation project on State Route 99 from South 272nd Street to SR 516 to extend the service life of the roadway. This project includes grinding and inlaying new Hot Mix Asphalt (HMA), pavement repairs, traffic loop replacement, striping and traffic control to maintain safe and reliable travel along the corridor. As part of the work, pedestrian curb ramps will be evaluated and upgraded as necessary to meet the Americans with Disabilities Act (ADA) and current accessibility standards. This project is also subject to WSDOT's Complete Streets requirements. WSDOT will work to incorporate as many active transportation facilities as feasible within the project delivery timeline to support people walking, biking and rolling. However, some improvements needed to fully meet Complete Streets requirements may be implemented at a later date due to scope and funding considerations.

WSDOT hosted an online open house and survey for this project, which was open to the public from Sept. 30 to Nov. 4, 2025 at [engage.wa.gov](https://engage.wa.gov). The purpose of this online open house and survey was to provide an overview of the project and seek feedback from the public to learn about their priorities. Site content was available in English, Punjabi, Somali, Spanish, and Ukrainian.

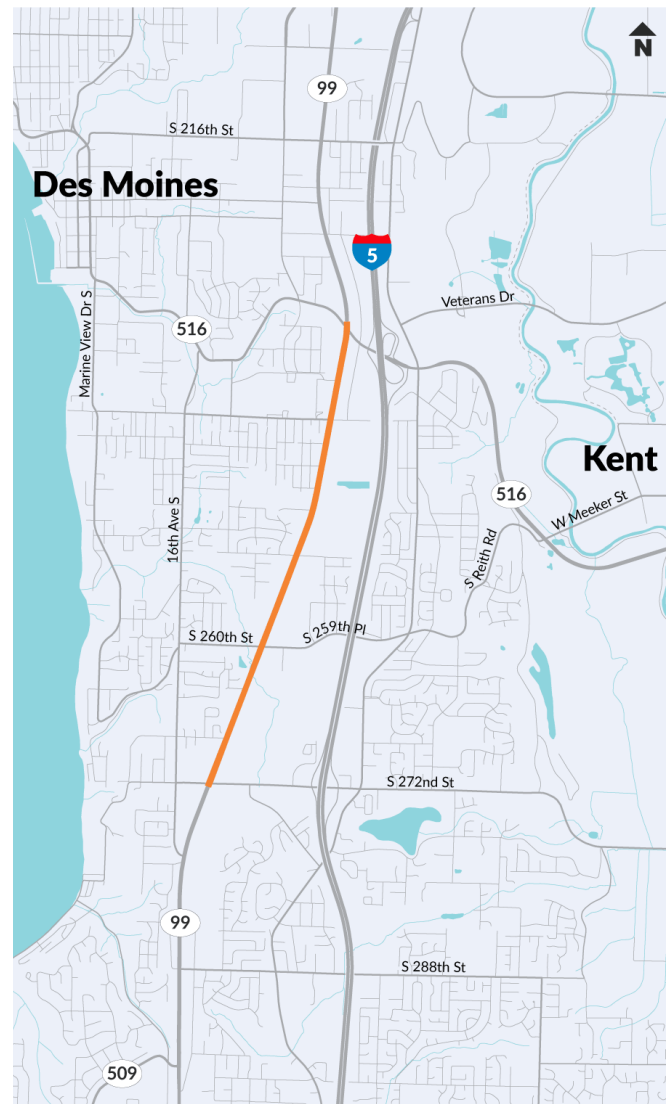


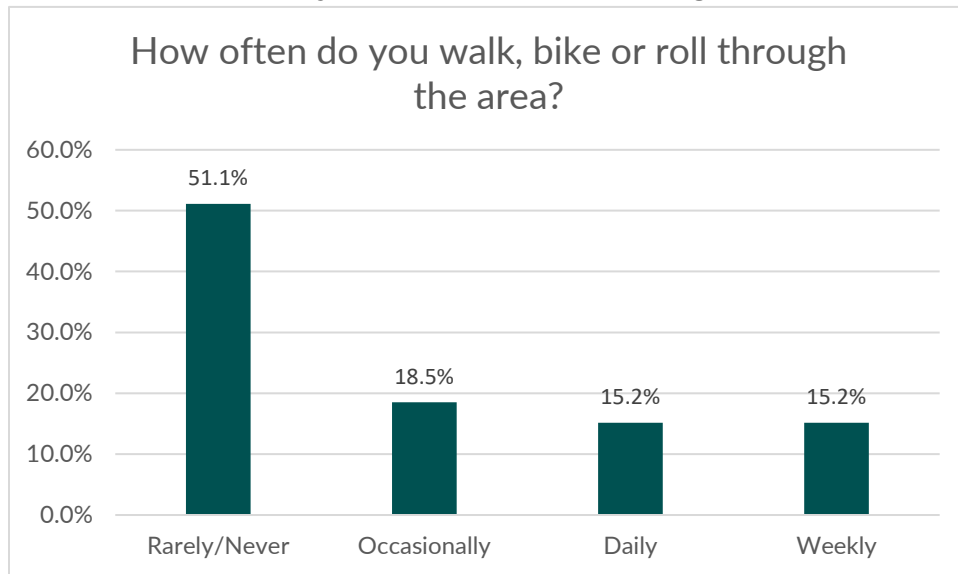
Figure 1. Map of the project area.

## Survey of results

The online open house received 177 survey responses. Survey responses were received in English (176) and Spanish (1). The full questionnaire and results charts are provided as an appendix to this summary.

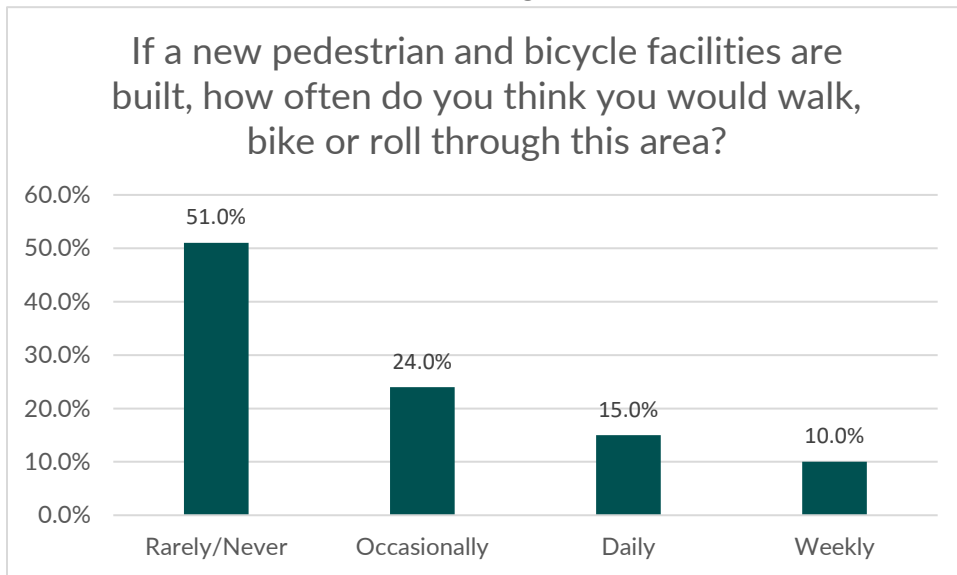
\*Note that due to the survey platform treating each language as a separate survey, the results aren't tallied comprehensively across all surveys, and instead individuals' notes are made below when a Spanish response was received.

### Question 1: How often do you walk, bike or roll through the area? (Choose 1)



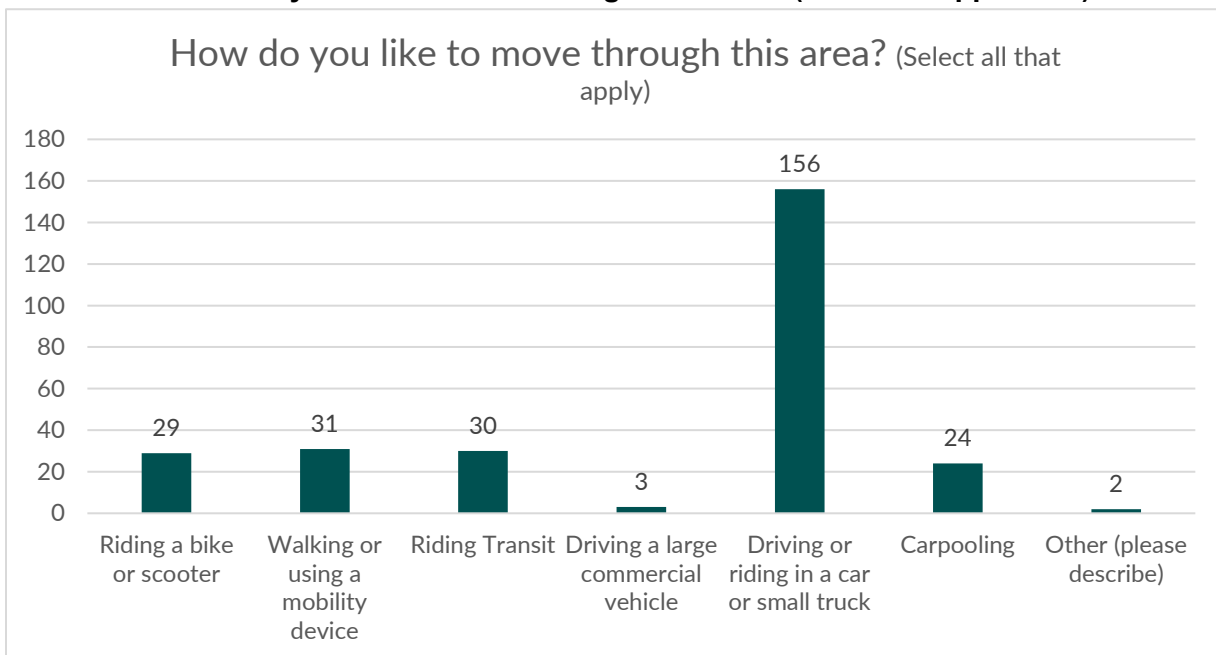
- 51% responded rarely/never, 18% said occasionally, and 15% each responded weekly or daily.
- Spanish survey response – rarely/never.

**Question 2: If a new pedestrian and bicycle facilities are built, how often do you think you would walk, bike or roll through this area? (Choose 1)**



- 51% stated rarely/never, 24% occasionally, 15% daily, and 10% weekly.
  - Spanish survey response – occasionally.

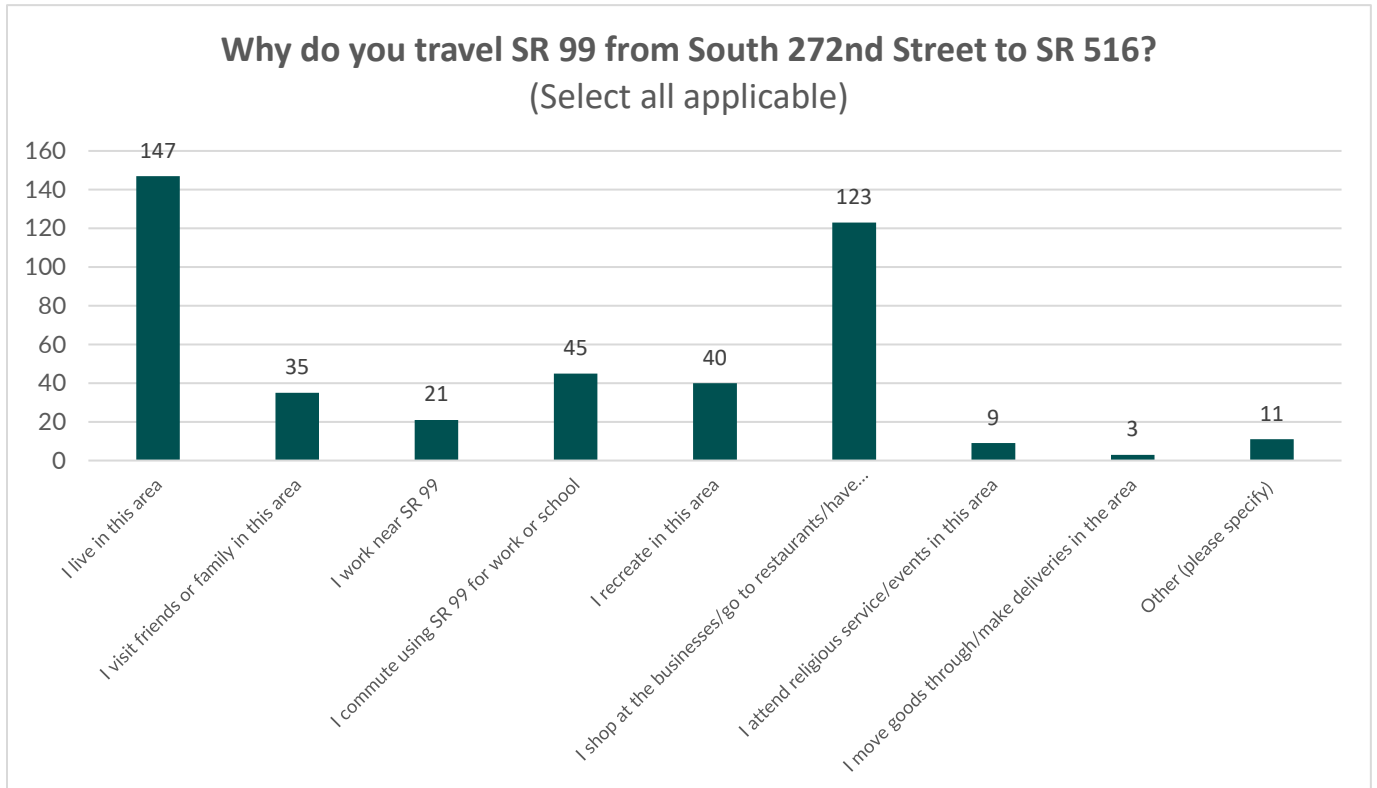
**Question 3: How do you like to move through this area? (Select all applicable)**



- The vast majority drive or ride in a car or truck (156) responses. Four selections were in the same grouping of responses: walking or using my mobility device (31), riding transit (30), riding a bicycle or scooter (29), or carpooling (24).

- Spanish survey response – drive or ride in a car or truck, carpooling.

**Question 4: Why do you travel SR 99 from South 272nd Street to SR 516? (Select all applicable)**



- The majority of people selected living in the area (147 responses) and shopping at businesses/going to restaurants/having appointments (123). Other notable responses included commuting for work or school (45), recreating in the area (40), and visiting friends and family (35).
  - Spanish survey response – live in the area.

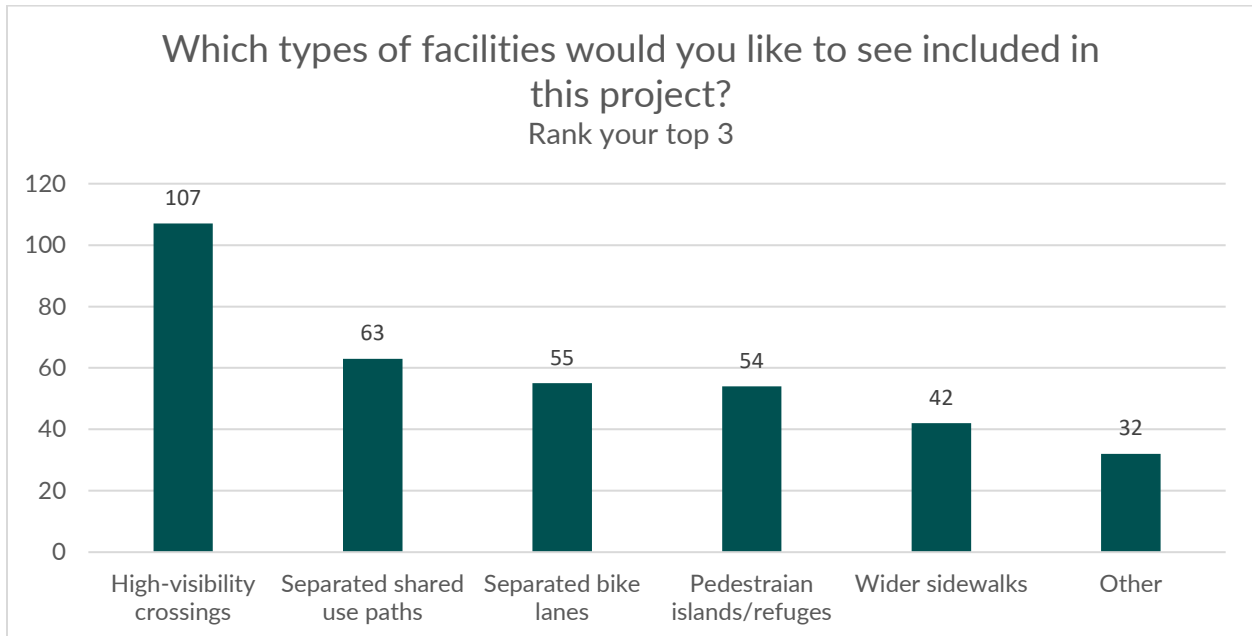
Question 5: What are your top priorities for the long-term vision for this project? (Rank your top 3)



- The leading priorities were adding lighting and visibility (86), addressing safety concerns for drivers (77) and addressing safety concerns for walkers, bikers, and rollers (73).
  - Spanish survey response – address safety concerns for drivers.
- Other receiving a share of the rankings include constructing safer crosswalks (39), adding more crosswalks (25), wider sidewalks (24), and adding bike facilities (24).
- Increasing access to bus stops received the least responses (22).
- 42 respondents selected “other” in their response, and those can be classified in the following way:
  - Some could be classified under the existing options, such as constructing safer crosswalks (6) and addressing safety concerns for those who walk, bike and roll (4).
  - Other top priorities could be categorized as Traffic flow (15), less crime and violence (10).
  - Some “other” responses could not be easily categorized, received few responses or didn’t answer the particular question. The assortment of those are:
    - Better signalization (1)
    - Bus shelters (1)
    - Finishing the project (1)
    - Getting rid of plantings (1)
    - Government transparency (1)
    - Lessening of vehicle speeds (1)
    - No bike lanes (1)

- Safety for drivers (2)
- Smoother roads (2)
- Turning lanes (1)
- Waste of money (3)

Question 6: Which types of facilities would you like to see included in this project? (Rank your top 3)



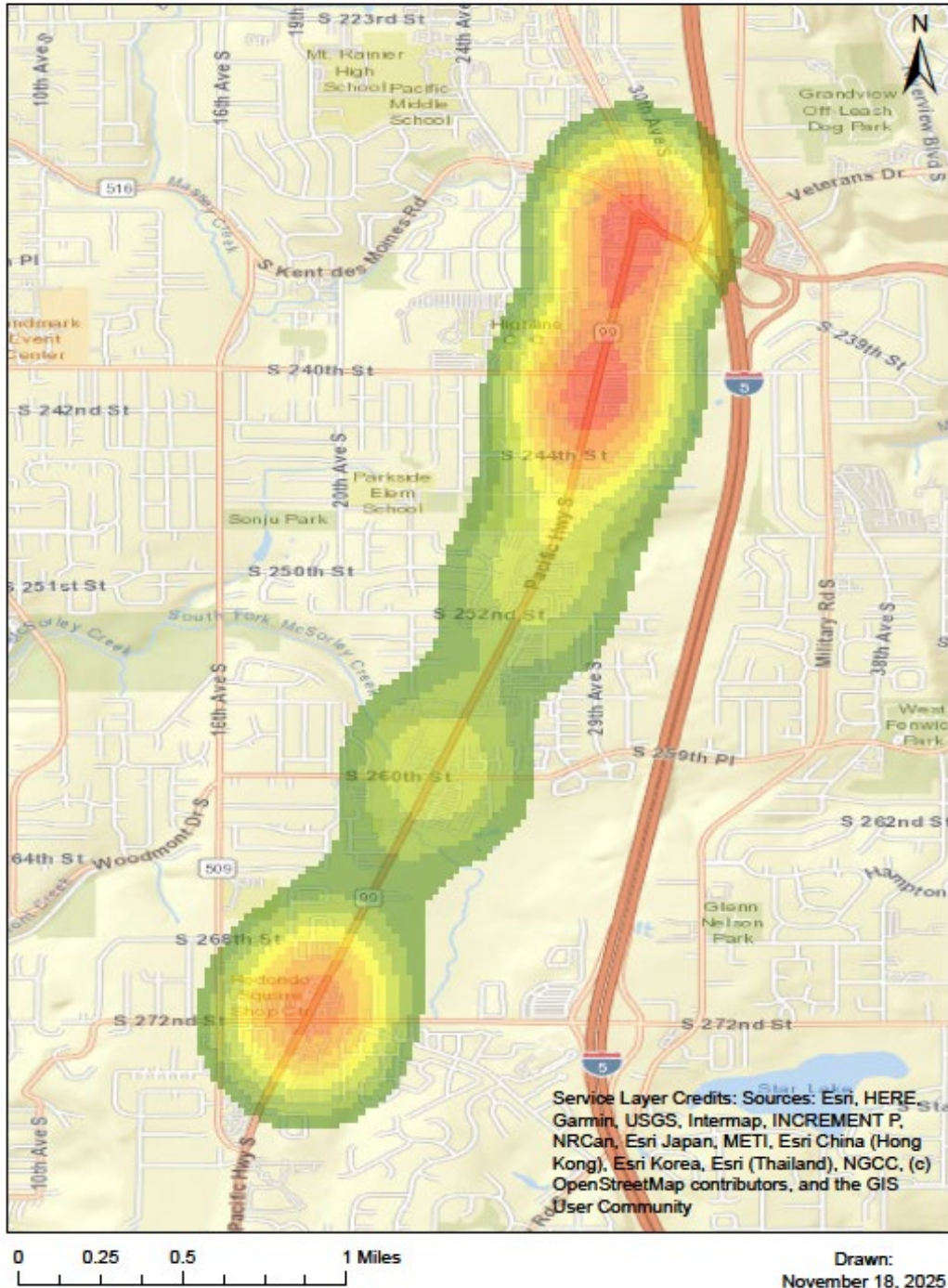
- High-visibility crossings (107) received by far the most responses.
- Separated shared use paths (63), separated bike lanes (55) and pedestrian islands/refuges (54) received a share of responses. Wider sidewalks (42) also received some responses.
  - Spanish survey response – separated shared use paths, wider sidewalks, high visibility crossing.
- 32 respondents selected “other” in their response, and those responses can be classified in the following way. These could not be easily categorized, received few responses or didn’t answer the particular question. The assortment of those are:
  - Barriers to crossings (1)
  - Center turn lanes (1)
  - Cleaner medians (1)
  - Enforcement (1)
  - Fences (2)
  - Increased lighting (3)
  - Increased speed limits (1)



- More green space (2)
- More lanes for cars (2)
- N/A (4)
- No change needed (8)
- Pedestrian bridges (1)
- Remove planted dividers (1)
- Road surface improvements (1)
- Separated shared use paths (3) – can be paired with the option that was already offered
- Speed control measures (2)

Question 7: Are there specific locations where bike and pedestrian improvements are especially needed?

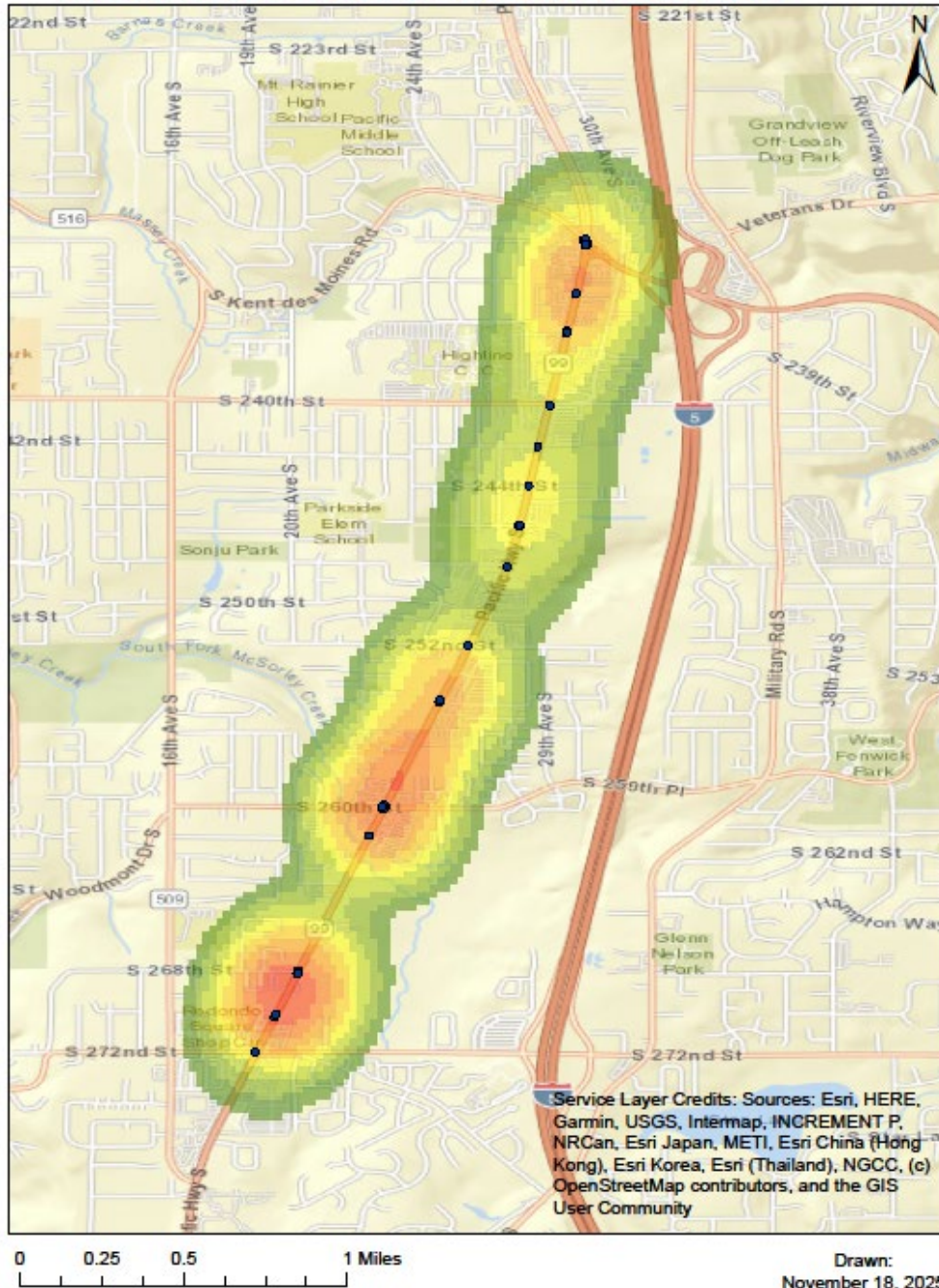
**Q7: Are there specific locations where bike and pedestrian improvements are especially needed? [Open response]**



- This was an open-ended question, with some respondents offering multiple suggestions. N=85 responses
- Responses were coded and categorized to distill themes. The following categories were represented.
  - 39 responses found this question not applicable or their response didn't fit the question.
  - 7 responses said the entire corridor needed improving.
  - 6 responses shared the location of 272nd and SR 99
  - 4 responses selected the junction of Kent Des Moines Rd/SR 516 and SR 99
  - 3 responses indicated the area between 240th and 252nd on SR 99
  - Other options received 2 or less responses, indicating a variety of locations or other classifications that could not easily be mapped/clustered within other areas.

Question 8: Are there locations (street, store, or other destination or landmark) where you want NEW protected crossings on SR 99 between South 272nd and SR 516?

**Q8: Are there locations (street, store, or other destination or landmark) where you want NEW protected crossings on SR 99 between South 272nd Street and SR 516?**

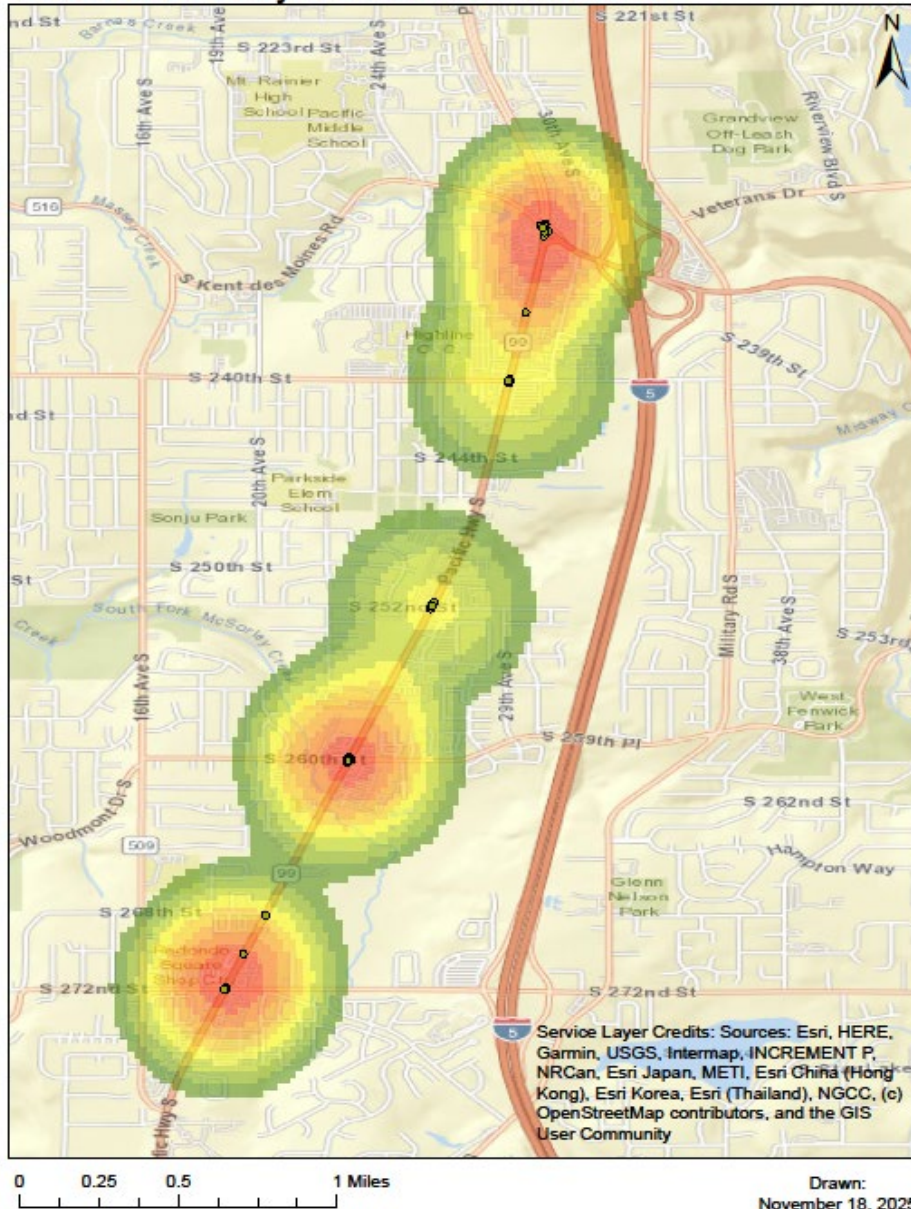


- This was an open-ended question, with some respondents offering multiple suggestions. N=82 responses

- Responses were coded and categorized to distill themes. The following categories were represented.
  - 260<sup>th</sup> St (5)
  - Bus stops, in general (5)
  - Fred Meyer (5)
  - Library (4)
  - SR 516 (4)
- Other responses had 2 or less responses, and were centered around individual street intersections (246th, 248th, etc) or individual locations (Dick's, Safeway/Taco Bell, etc).
- 29 respondents answers were either Not Applicable or they had no response.

Question 9: Are there existing traffic signals where you want crossing improvements on SR 99 between South 272nd Street and SR 516? What concerns do you have at these locations?

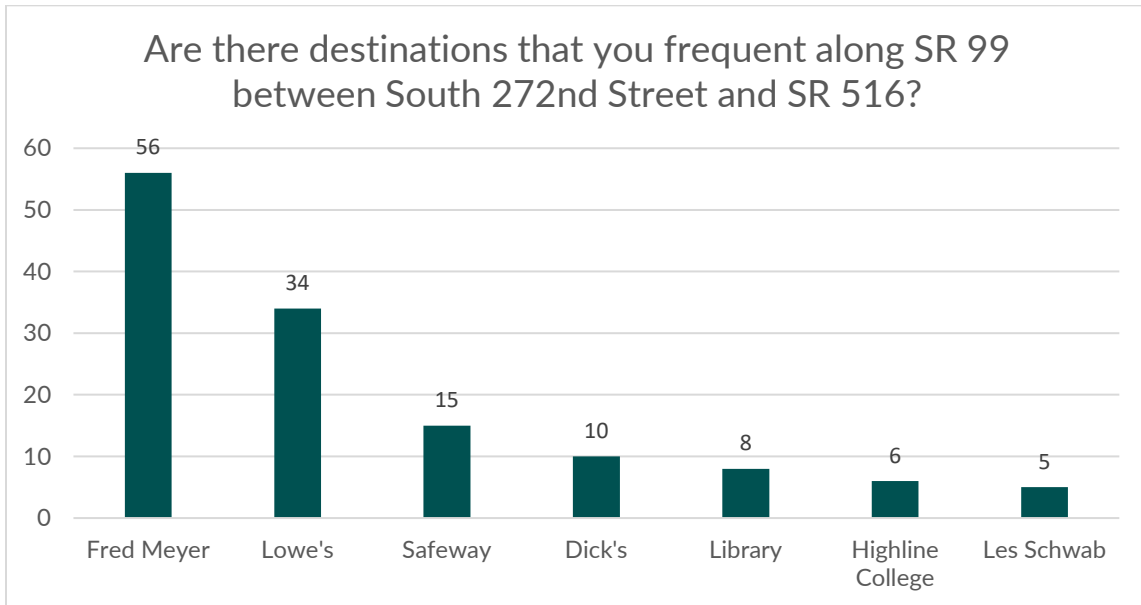
**Q9: Are there existing traffic signals where you want crossing improvements on SR 99 between South 272nd Street and SR 516? What concerns do you have at these locations?**



- This was an open-ended question, with some respondents offering multiple suggestions. N=70 responses
- Responses were coded and categorized to distill themes. The following categories were represented.
  - 272nd (7)
  - 260th (8)

- 240th (4)
- Kent Des Moines Rd/SR 516 and SR 99 (8)
- Other responses had 2 or less responses.
- 31 responses were considered “Not Applicable”
- For specific concerns, the following were highlighted by respondents.
  - Many pedestrians, including children, who face unsafe walking conditions.
  - Pedestrians not following the crossing or traffic laws, endangering themselves and others.
  - Traffic backups at signals.
  - Lots of transit riders for light rail and Rapid Rid stops.
  - Signals offer too little time to cross.
  - Right on red being a problem for pedestrians.
  - No interest in the project due to money, other work already done in the area, or not liking roundabouts.

Question 10: Are there destinations that you frequent along SR 99 between South 272nd Street and SR 516? (Open response)



- This was an open-ended question, with some respondents offering multiple responses. N=229 responses
- Responses were coded and categorized. The following categories were represented and are illustrated on the bar graph. “Other” responses are listed below.
  - Fred Meyer (56)
  - Lowe's (34)
  - Safeway (15)
  - Dick's (10)
  - Library (8)

- Highline College (6)
  - Les Schwab (5)
- 16 responses were classified as “Not Applicable”.
- Other generalized/broad responses were “shopping” (3), restaurants (4), grocery stores (2).
- Other individuals responded with specific street locations such as 152nd, 160th, 240th, etc. These specific locations didn’t receive more than 1 or 2 responses.
- Other specific locations didn’t receive more than 3 responses.

### Optional demographic questions

- Home zip codes that were most commonly represented in the survey included 98198 (62), 98032 (37) and 98037 (19), which represent Seattle and Kent. Federal Way, 98003, also had 37 responses. Other zip codes represented had no more than 3 respondents, some of which represent Pacific, Kent and Seattle.
  - Spanish survey response – 98032/Kent.
- Work zip codes were more evenly divided. Seattle-98198 (18) and Kent-98032 (14), had the most responses. A smattering of zip codes had 7 responses or less, including zip codes in cities like Olympia, Tacoma, Bellevue, Lakewood, Seattle, and others.
  - Spanish survey response – 98107/Seattle.
- Most respondents identified as white or Caucasian (109), with the next largest group preferring not to share (24). Other responses received 9 or less responses.
  - Spanish survey response – white or Caucasian.
- 48 respondents identified as between the ages of 65-79 (29%). The next most responses were 55-64 and 35-44, both with 32 respondents (19% each), and 45-54 (14%).
  - Spanish survey response – 35-44.
- 74% of respondents reported having no disability (119 responses). 15% said they did have a disability, with 10% preferring not to disclose.
  - Spanish survey response – no disability.
- The reported gender distribution was majority male, with 91 respondents identifying as male and 57 as female. 12 preferred not to disclose.
  - Spanish survey response – woman.
- The vast majority of respondents spoke English (154). Spanish had 9 responses. Remaining options had 9 (“not listed here”) or less responses.
  - Spanish survey response – Spanish.



## Community engagement methods

This study is subject to the Healthy Environments for All (HEAL) Act, which aims to address disproportionate environmental and health impacts by prioritizing vulnerable populations and overburdened communities. The Act promotes the equitable distribution of resources and benefits while working to reduce harm.

Community engagement occurred throughout the study to gather feedback from community members. A four-factor analysis was conducted to determine language translation needs, ensuring meaningful access for Limited English Proficient (LEP) populations. Study materials were translated into English, Punjabi, Somali, Spanish, and Ukrainian.

A variety of methods were used to engage with the community. A study flyer was developed for each language to provide an overview of the study and included a QR code linking directly to the study webpage and online open house. The flyer was available digitally on the study webpage and shared with study partners. Additionally, a postcard was mailed to 19,632 residents and businesses within the study area to inform them about the online open house.

The study team collaborated with agency partners to help promote the online open house and survey and share information about the project. Information about the study and the online open house was also shared through WSDOT's social media channels and a press release. Examples of community engagement activities are included in Appendix A.

## Attachment A

### Study Flyer

A flyer was developed to provide an overview of the study and to inform the public about the online open house and survey. The flyer was made available in all the translated languages and was distributed digitally to partners and posted on the study webpage, hardcopies were provided to businesses and residents during in-person flyering. An example of the English version is provided.

# SR 99

## SR 99/S 272nd St to SR 516 Vic - Paving & ADA Compliance Project

### Overview

WSDOT is planning the State Route (SR) 99/South 272nd Street to SR 516 Vicinity - Paving and ADA Compliance project in Kent to help improve safety, accessibility, and travel choices for everyone. We are planning to repave SR 99 from South 272nd Street to the vicinity of SR 516 and upgrade curb ramps to make them safer and more accessible for people with disabilities.

This project is scheduled for construction in summer 2026, supported by a \$1.45 million grant. WSDOT is working to include as many bike and pedestrian improvements as possible during this phase, with longer-term improvements potentially delivered in a future unfunded project.

### Near-Term Improvements

WSDOT is considering near-term improvements that can be implemented during paving and ADA construction. These include crossing enhancements such as:

- **Lane narrowing:** Narrowing traffic lanes to 11 feet in width, allowing for a small outside shoulder area between traffic and sidewalks, reducing the level of traffic stress for pedestrians and bicyclists.
- **Speed Cushions:** Installing speed cushions encourage vehicles to slow as they approach crosswalks or turns.
- **Truck Aprons:** Truck aprons have an extended curb at some intersections to slow vehicle turning speeds and still allow larger vehicles to drive across and make tighter turns. This reduces crossing distances for pedestrians and bicyclists.
- **Enhanced driveways:** Intersection enhancements modify side streets with more than 50 ft in width and have an existing right-in / right-out alignment. These modifications will add pedestrian refuge islands.



This project will repave and construct ADA upgrades on SR 99 in the city of Kent.



Map of location for proposed near-term improvements on SR 99.

### Bike and Pedestrian Crossings

With growing pedestrian, bicycle and transit needs along SR 99, demand for crossing improvements and accessibility are expected to increase. There are currently seven existing traffic signals on SR 99 between South 272nd Street and SR 516 where pedestrians and bicyclists have protected crossings. Some of the intersections have large distances between them, up to three-quarters of a mile. There are two new crossings that are planned and funded by the city of Kent near South 244th Street and South 248th Street. One additional crossing at South 268th Street is planned but not currently funded.

### Long-term Options Under Consideration

For the long-term vision for SR 99, WSDOT is considering several types of bicycle and pedestrian facilities. Your input will help us prioritize the right mix. There are three bike and pedestrian options identified for SR 99.



Map of existing protected pedestrian crossings and new/proposed crossings on SR 99



Shared Use Path A wide, paved path for people walking and biking, separated from vehicle traffic.



Bike Lanes and Sidewalks running alongside one another in the direction of vehicle travel, separated from vehicles.



Separated Two-Way Bike Lane on one side of the street, with sidewalks on both sides of the street, all separated from vehicle traffic.

## We want to hear from you!



WSDOT wants to hear your thoughts on how to make State Route 99/South 272nd Street to SR 516 Vicinity more accessible for everyone, whether you're walking, biking, rolling, riding the bus or driving. To access the survey: <http://bit.ly/41BB4oc> or scan the QR Code. The survey closes: November 4, 2025. All responses are anonymous.

Please contact Amber Stanley for questions at [Amber.Stanley@wsdot.wa.gov](mailto:Amber.Stanley@wsdot.wa.gov) or 206-817-8833.

**Americans with Disabilities Act (ADA) Information:** Accommodation requests for people with disabilities can be made by contacting the WSDOT Diversity/ ADA Affairs team at [wsdotada@wsdot.wa.gov](mailto:wsdotada@wsdot.wa.gov) or calling toll free, 855-362-4ADA (4232). Persons who are deaf or hard of hearing may make a request by calling the Washington State Relay at 711.

**Title VI Statement to Public:** It is the Washington State Department of Transportation's (WSDOT) policy to assure that no person shall, on the grounds of race, color, national origin or sex, as provided by Title VI of the Civil Rights Act of 1964, be excluded from participation in, be denied the benefits of, or be otherwise discriminated against under any of the programs and activities. Any person who believes his/her Title VI protection has been violated, may file a complaint with WSDOT's Office of Equal Opportunity (OEO). For additional information regarding Title VI complaint procedures and/or information regarding our non-discrimination obligations, please contact OEO's Title VI Coordinator at (360) 705-7090.



## Attachment B

### Postcard mailer

19,632 post cards were mailed on October 9, 2025, to residents and businesses near the SR 99 corridor, most within a half mile of the study area.

# Take our survey!



## SR 99/S 272nd St to SR 516 Vic - Paving & ADA Compliance Project

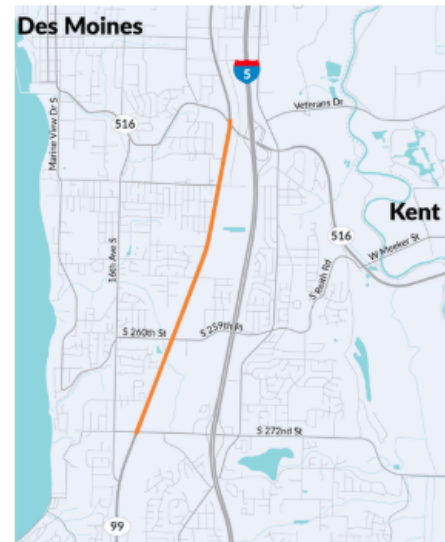
WSDOT wants to hear your thoughts on how to make State Route 99/South 272nd Street to SR 516 Vicinity more accessible for everyone, whether you're walking, biking, rolling, riding the bus or driving. To access the survey: <http://bit.ly/41BB4oc> or scan the QR Code. The survey closes November 4th. All responses are anonymous.

WSDOT quiere conocer su opinión sobre cómo hacer que la State Route 99/South 272nd Street hasta la SR 516 y los alrededores sea más accesible para todos, ya sea que camine, circule en bicicleta, patine, viaje en autobús o conduzca. Para acceder a la encuesta: <http://bit.ly/41BB4oc> o escanee el código QR. La encuesta cierra: 4 de noviembre. Todas las respuestas son anónimas.

Департамент транспорту штату Вашингтон (Washington State Department of Transportation, WSDOT) хоче почути вашу думку щодо того, як зробити шосе State Route 99 на відрізку між South 272nd Street і SR 516 Vicinity доступнішим для всіх, хто пересувається пішки, на велосипеді, немоторизованих транспортних засобах, автобусі чи автомобілі. Щоб перейти до опитування, перейдіть за посиланням <http://bit.ly/41BB4oc> або відскануйте QR-код. Дата закінчення опитування: 4 листопада. Усі відповіді анонімні.

Waaxda Gaadiidka Gobolka Washington (Washington State Department of Transportation, WSDOT) waxay rabtaa inay maqasho fikradahaaga ku saabsan sida loo fududayn karo in State Route 99/South 272nd Street ilaa SR 516 Vicinity gof walba uu si sahlan ugu isticmaali karo, haddii aad lugaynayso, baaskiil wadayso, kursiga curyaanka ku dhagaagayso, baska raacayso, ama gaadhi wadayso. Si aad u gasho sahanka: <http://bit.ly/41BB4oc> ama iskaanno koodhka QR. Sahanku wuxuu xirnaanayaa 4 November. Dhammaan jawaabaha waa qarsoodi.

WSDOT ਤੁਹਾਡੇ ਵਿਚਾਰ ਪ੍ਰਾਪਤ ਕਰਨਾ ਚਾਹੁੰਦਾ ਹੈ ਕਿ ਰਾਜ ਮਾਰਗ 99/ਦੱਖਣੇ 272ਵੀਂ ਸਟ੍ਰੀਟ/ ਸੜਕ ਤੋਂ ਰਾਜ ਮਾਰਗ 516 ਦੇ ਆਲੇ-ਦੁਆਲੇ ਨੂੰ ਸਾਰਿਆਂ ਲਈ ਸੁਲਭ ਕਿਵੇਂ ਬਣਾਇਆ ਜਾਵੇ, ਭਾਵੇਂ ਤੁਸੀਂ ਪੈਦਲ ਚੱਲ ਰਹੇ ਹੋ, ਸਾਈਕਲ ਚਲਾ ਰਹੇ ਹੋ, ਘੁੰਮ ਰਹੇ ਹੋ, ਬੱਸ ਦੀ ਸਵਾਰੀ ਕਰ ਰਹੇ ਹੋ ਜਾਂ ਗੱਡੀ ਚਲਾ ਰਹੇ ਹੋ। ਸਰਵੇਖਣ ਤੱਕ ਪਹੁੰਚ ਕਰਨ ਲਈ: <http://bit.ly/41BB4oc> ਜਾਂ QR ਕੋਡ ਨੂੰ ਸਕੈਨ ਕਰੋ। ਸਰਵੇਖਣ ਦੀ ਸਮਾਪਤੀ: 4 ਨਵੰਬਰ। ਸਾਰੇ ਜਵਾਬ ਗੁਪਤ ਹਨ।



FALL 2025



### Visit WSDOT's online survey to learn more about future plans on SR 99 in Kent

Take the survey here: <http://bit.ly/41BB4oc>

Visit WSDOT's online open house to learn more about the future plans on SR 99 in Kent. The survey will close November 4

Visite la jornada de puertas abiertas en línea del WSDOT para obtener más información sobre los planes futuros de la SR 99 en Kent. La encuesta finaliza el 4 de noviembre.

Booqo guriga furan ee WSDOT si aad wax badan uga ogaato qorshayaasha mustaqbalka ee SR 99 ee Kent. Sahanku wuxuu xirnaanayaa 4 November.

Відвідайте онлайн-день відкритих дверей WSDOT, щоб дізнатися більше про майбутні плани щодо SR 99 у Kent. Опитування завершиться 4 листопада.

ਕੈਂਟ ਵਿੱਚ SR 99 ਬਾਰੇ ਭਵਿੱਖ ਦੀਆਂ ਯੋਜਨਾਵਾਂ ਬਾਰੇ ਹੋਰ ਜਾਣਨ ਲਈ WSDOT ਦੇ ਔਨਲਾਈਨ ਓਪਨ ਹਾਊਸ 'ਤੇ ਜਾਓ। ਸਰਵੇਖਣ 4 ਨਵੰਬਰ ਨੂੰ ਬੰਦ ਹੋਵੇਗਾ।



Northwest Region  
15700 Dayton  
Avenue North PO  
Box 330310  
Seattle, WA  
98133-9710

FRSRT STD  
USPOSTAGE PAID  
WASHINGTON STATE DEPT  
OF ENTERPRISE SVCS  
98101

ECRWSS  
POSTAL PATRON

**Title VI Notice to Public:** It is the Washington State Department of Transportation's (WSDOT) policy to assure that no person shall, on the grounds of race, color, national origin, as provided by Title VI of the Civil Rights Act of 1964, be excluded from participation in, be denied the benefits of, or be otherwise discriminated against under any of its programs and activities. Any person who believes his/her Title VI protection has been violated, may file a complaint with WSDOT's Office of Equity and Civil Rights (OECR). For additional information regarding Title VI complaint procedures and/or information regarding our non-discrimination obligations, please contact OECR's Title VI Coordinator at (360) 705-7090. **Americans with Disabilities Act (ADA) Information:** This material can be made available in an alternate format by emailing the Office of Equity and Civil Rights at [wdsdotada@wsdot.wa.gov](mailto:wdsdotada@wsdot.wa.gov) or by calling toll free, 855-362-4ADA(4232). Persons who are deaf or hard of hearing may make a request by calling the Washington State Relay at 711.



Attachment C  
**Social media posts**



## Attachment D

### List serv

Information about the open house was also included in the King County list serve issued on October 10, 2025.

## KENT: SR 99/S 272nd St to SR 516 Vic – Paving & ADA Compliance project

The Washington State Department of Transportation (WSDOT) is planning improvements to a section of State Route (SR) 99 between South 272nd Street and SR 516/Kent Des Moines Road in Kent. These improvements will include repaving the highway and upgrading ADA sidewalk curb ramps to meet current accessibility standards to improve safety, accessibility and comfort for all users. WSDOT will develop improvements under its Complete Streets guidelines, which integrate the needs of pedestrians, bicyclists, and transit users in overall project design.

### Community Engagement

We want to hear from you! WSDOT is hosting an online open house and survey from Wednesday, October 8 to Tuesday, November 4 to collect community input about current travel experiences, accessibility needs along this corridor, and proposed designs for sidewalks, bike lanes, and other features. This online open house is available 24/7 during the survey period for you to review project details and complete a brief survey at your convenience. Your input will help shape the decisions about bicycle and pedestrian improvements including crossing improvements and accessibility improvements along this section of SR 99. Information is available in English, Punjabi, Somali, Spanish, and Ukrainian.

After the open house and survey have closed, WSDOT will review community feedback to inform and refine the vision for active transportation on SR 99. These updates will be shared on WSDOT's social media platforms, a blog post, and listserv.

### Stay in touch

There are several ways to stay connected as we continue the study:

- Register for our listserv to receive email updates on project progress. <https://public.govdelivery.com/accounts/WADOT/subscriber/new>
- Visit our [study website](#) for more information.
- Contact Amber Stanley, the WSDOT Community Engagement lead, at [Amber.Stanley@wsdot.wa.gov](mailto:Amber.Stanley@wsdot.wa.gov)

**Americans with Disabilities Act (ADA) information** If you would like to learn more about accessibility and the tools we have available, visit [www.wsdot.wa.gov/Accessibility](http://www.wsdot.wa.gov/Accessibility).