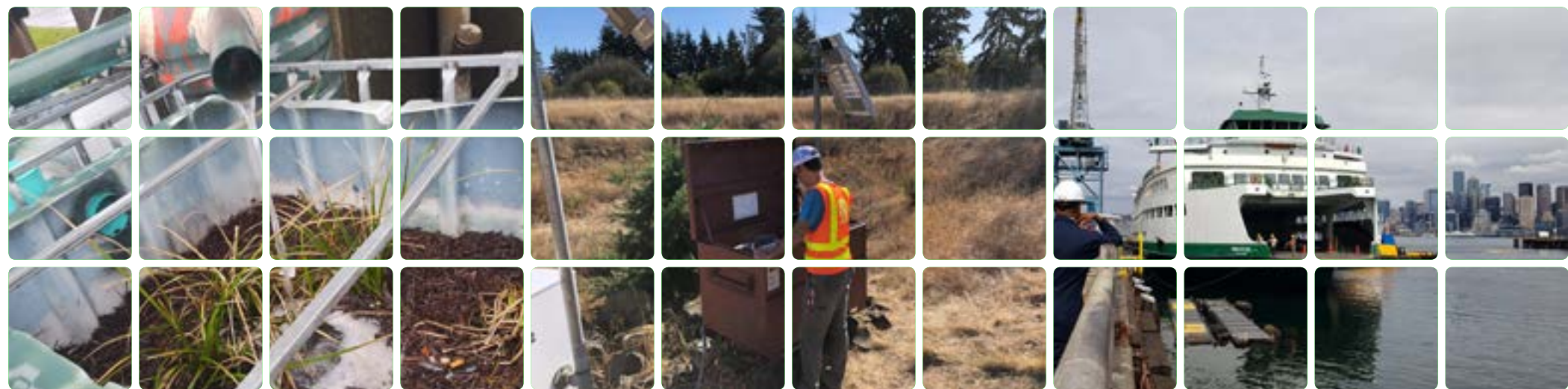


# 2025 STORMWATER REPORT

NPDES Municipal Stormwater Permit Annual Report for Fiscal Year 2025





# Title VI, ADA

## Title VI Notice to Public

It is the Washington State Department of Transportation's (WSDOT) policy to assure that no person shall, on the grounds of race, color, national origin or sex, as provided by Title VI of the Civil Rights Act of 1964, be excluded from participation in, be denied the benefits of, or be otherwise discriminated against under any of its federally funded programs and activities. Any person who believes his/her Title VI protection has been violated, may file a complaint with WSDOT's Office of Equal Opportunity (OEO). For additional information regarding Title VI complaint procedures and/or information regarding our non-discrimination obligations, please contact OEO's Title VI Coordinator at (360) 705-7082.

## Americans with Disabilities Act (ADA) Information

This material can be made available in an alternate format by emailing the WSDOT Diversity/ADA Affairs team at [wsdotada@wsdot.wa.gov](mailto:wsdotada@wsdot.wa.gov) or by calling toll free, 855-362-4ADA (4232). Persons who are deaf or hard of hearing may make a request by calling the Washington Relay at 711.



# Contents

Title VI, ADA . . . . . i

Table of Contents . . . . . ii

List of Figures . . . . . iv

List of Tables . . . . . v

List of Acronyms . . . . . vi

Certification . . . . . vii

Chapter 1 - Stormwater Program Management . . . . . 1

    Stormwater Management. . . . . 1

    Water Quality Regulations . . . . . 1

    Areas Covered by the Permit . . . . . 1

    How to Use This Report . . . . . 3

    Permit Implementation Costs . . . . . 3

    Triggered Reporting Items . . . . . 3

Chapter 2 - Total Maximum Daily Loads . . . . . 6

    Total Maximum Daily Loads in the Permit . . . . . 6

    Implementing TMDL Requirements . . . . . 6

Chapter 3 - Construction Site Stormwater Pollution Prevention . . . . . 10

    Temporary Erosion and Sediment Control . . . . . 10

    Fall Assessments . . . . . 10

# Table of Contents

Chapter 4 - Stormwater Infrastructure . . . . .	14
Planning and Designing New Facilities . . . . .	14
Retrofits . . . . .	14
Stormwater System Mapping . . . . .	17
Illicit Discharge Detection and Elimination . . . . .	18
Chapter 5 - Maintenance and Operations . . . . .	20
Road and Facility Maintenance and Operations . . . . .	20
Treatment and Flow Control BMP Maintenance . . . . .	20
Catch Basin Maintenance . . . . .	21
Ferry Terminal Maintenance and Operations . . . . .	21
Chapter 6 - Stormwater Monitoring . . . . .	24
Stormwater Monitoring and Effectiveness Studies . . . . .	24
Chapter 7 - Education and Public Involvement . . . . .	26
Education and Public Involvement . . . . .	26
Environmental Justice . . . . .	27
Internet Site . . . . .	28
Knowledge and Technology Transfer . . . . .	28
Appendix 1 . . . . .	31
Appendix 2 . . . . .	42
Appendix 3 . . . . .	44

## List of Figures

Figure 1	WSDOT facilities within Phase I and II Municipal Stormwater Permit areas . . . . .	2
Figure 2	Farming too close to the edge of the roadway can cause erosion as seen at this site identified on SR 272 during a highway evaluation required by a TMDL. . . . .	6
Figure 3	WSDOT facilities within TMDLs included in the permit. . . . .	8
Figure 4	Slope stabilization using permeable/natural BMPs at the Elwha River Bridge project in Olympic Region . . . . .	10
Figure 5	A media filter drain damaged by wheel path impact from heavy trucks is repaired by Southwest Region crews. . . . .	21
Figure 6	A member of WSDOT’s Monitoring and Research Program prepares equipment at a monitoring site . . . . .	24
Figure 7	Retrofit priority locations provided by entities include tribes, cities, towns, counties, and other interest groups . . . . .	28

# List of Tables

## List of Tables

Table 1	Fall assessment findings of projects' ability to implement the erosion control plan elements. . . . .	11
Table 2	Acres of Existing Impervious Surface Retrofitted or Reverted to Pervious . . . . .	16
Table 3	Permanent BMPs Requiring Additional Funding to Correct and Corrections Made. . . . .	20
Table 4	TMDL Implementation Summary Table . . . . .	31
Table 5	Stormwater BMPs Built Statewide During the 2025 Reporting Period . . . . .	42
Table 6	Summary of IDDE Issues and Remediation Activities . . . . .	44

## List of Acronyms

BMP	Best Management Practice	NPDES	National Pollutant Discharge Elimination System
CAB	Compost Amended Bioswale	PCB	Polychlorinated Biphenyl
CESCL	Certified Erosion and Sediment Control Lead	QAPP	Quality Assurance Project Plan
CSWGP	Construction Stormwater General Permit	RCW	Revised Code of Washington
CTR	Commute Trip Reduction	SWMPP	Stormwater Management Program Plan
EPA	Environmental Protection Agency	SWPPP	Stormwater Pollution Prevention Plan
GIS	Geographic Information Systems	TAPE	Technology Assessment Protocol - Ecology
GPS	Global Positioning System	TER	Technical Evaluation Report
HEAL	Healthy Environmental For All	TESC	Temporary Erosion and Sediment Control
HRM	Highway Runoff Manual	TMDL	Total Maximum Daily Load
IDDE	Illicit Discharge Detection and Elimination	VFS	Vegetated Filter Strip
MS4	Municipal Separate Storm Sewer System	WSDOT	Washington State Department of Transportation
NGO	Non-Governmental Organization	WSF	Washington State Ferries

# Certification

## Certification and Signature for Washington State Department of Transportation's National Pollutant Discharge Elimination System Municipal Stormwater Permit 2025 Stormwater Report

I certify under penalty of law, that this document and all attachments were prepared under my direction or supervision in accordance with a system designed to assure that qualified personnel properly gathered and evaluated the information submitted. Based on my inquiry of the person or persons who manage the system or those persons directly responsible for gathering information, the information submitted is, to the best of my knowledge and belief, true, accurate, and complete. I am aware that there are significant penalties for submitting false information, including the possibility of fine and imprisonment for willful violations.



Ahmer Nizam, Director

Environmental Services Office

Washington State Department of Transportation



## STORMWATER MANAGEMENT

Historically, WSDOT managed stormwater to maintain safe driving conditions and preserve the condition of the roadway. WSDOT focused on getting the stormwater off the roadway as fast as possible. While safety and preservation continue to be top priorities for WSDOT, today the agency also manages stormwater from state transportation facilities to fulfill its environmental stewardship goals as well as regulatory obligations. WSDOT uses stormwater operational and structural best management practices (BMPs) to minimize pollution and control stormwater runoff flows from its roadways.

## WATER QUALITY REGULATIONS

### *Clean Water Act*

The Federal Water Pollution Control Act, also known as the Clean Water Act, aims to restore and maintain the chemical, physical, and biological integrity of the Nation's waters. It addresses effects from stormwater discharges through the National Pollutant Discharge Elimination System (NPDES) program. Under this program, the Environmental Protection Agency (EPA) issues permits regulating stormwater discharges to receiving water bodies. In Washington State, the EPA delegated permitting authority of the NPDES program to the Department of Ecology (Ecology).

### *WSDOT's NPDES Municipal Stormwater Permit*

WSDOT's NPDES and State Waste Discharge Permit for Municipal Stormwater (permit) is tailored to the linear

nature and unique constraints of the transportation system. Compliance with this permit constitutes compliance with the Clean Water Act and the State of Washington Water Pollution Control Act (Chapter 90.48 RCW).

## AREAS COVERED BY THE PERMIT

### *Phase I and II Permit Areas*

WSDOT's permit covers stormwater discharges from stormwater conveyance systems (municipal separate storm sewer systems, or MS4s) owned or operated by WSDOT in areas covered by the NPDES Phase I Municipal Stormwater Permit and Phase II municipal stormwater permits for Eastern and Western Washington. Discharges covered include those from highways, ferry terminals, rest areas, park and ride lots, maintenance facilities, vector decant and street sweeping facilities, and winter chemical storage facilities. All permit requirements are implemented in these areas. A map of permit-covered facilities within Phase I and II permit areas appears on page 2.

### *Total Maximum Daily Load Areas*

WSDOT's permit also covers stormwater discharges to any receiving water body in Washington State for which there is an EPA-approved Total Maximum Daily Load (TMDL) with wasteload allocations and implementation documents specifying actions for WSDOT. Compliance with the specific action items prescribed in Appendix 3 of the permit constitutes compliance with TMDL wasteload allocations. A map of permit-covered facilities within TMDL areas is located in Chapter 2.

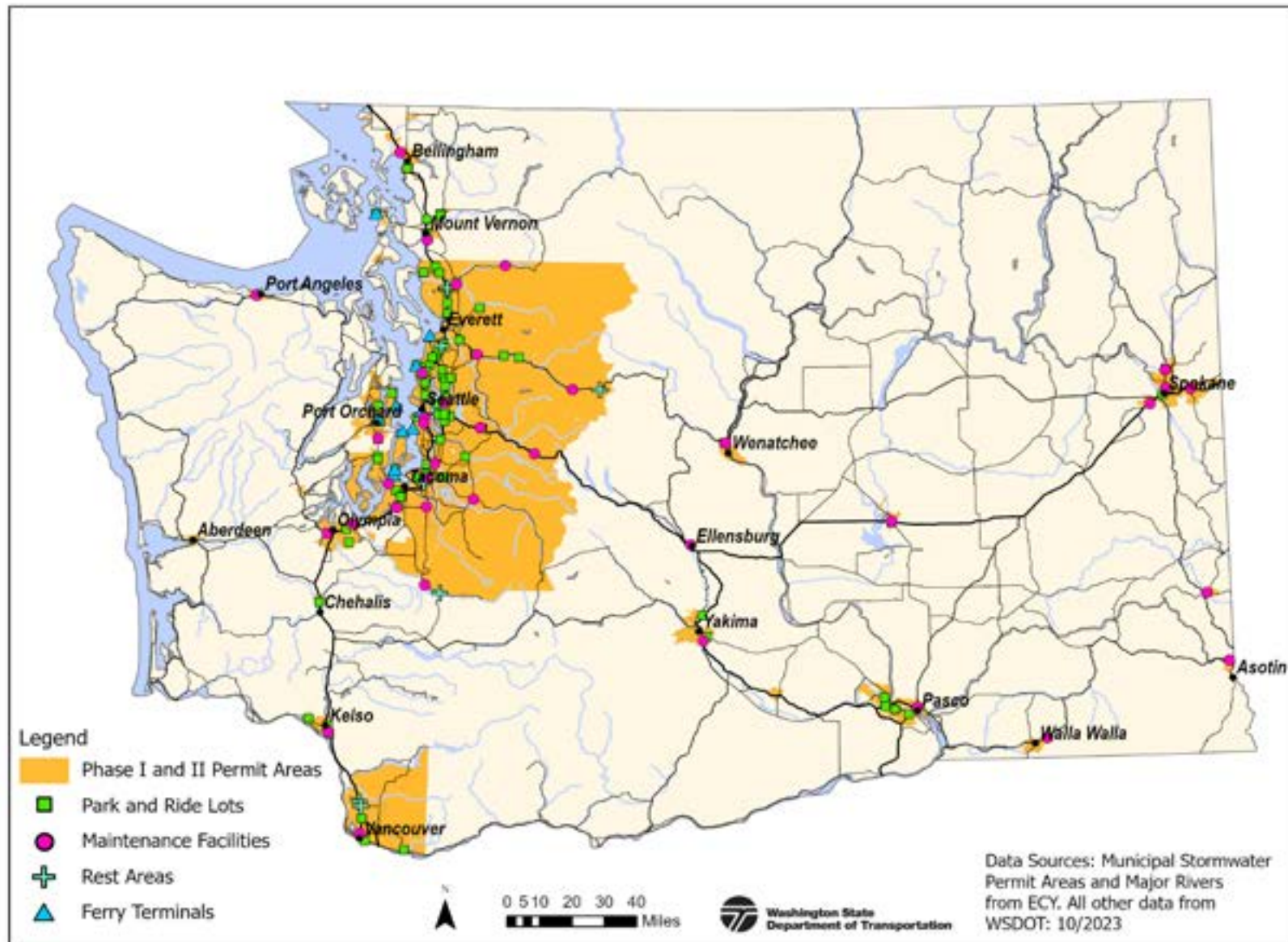


Figure 1. WSDOT facilities within Phase I and II Municipal Stormwater Permit areas.

# Stormwater Program Management

## HOW TO USE THIS REPORT

### *Compliance and Information Document*

This Stormwater Report serves as WSDOT's permit-required annual report. It provides a status update on permit compliance and implementation from July 1, 2024 to June 30, 2025, the reporting period. WSDOT submits separate reports to fulfill its reporting requirements related to stormwater monitoring.

WSDOT uses the Stormwater Report to help assess the appropriateness and effectiveness of various programs and activities described in its Stormwater Management Program Plan (SWMPP).

## PERMIT IMPLEMENTATION COSTS

### *Funding Requests for Permit Implementation*

The permit requires WSDOT to request adequate resources to maintain compliance with the permit in its agency-request budget submittal to the Governor's Office. Once the budget request is received by the Office of Financial Management within the Governor's Office, the Governor submits a transportation budget to the Legislature recommending funding levels and allocations. Any amount requested supplements ongoing permit implementation funds from the previous biennium. WSDOT did not need to request additional resources during this biennium.

### *Permit Implementation Costs*

The permit requires WSDOT to track the cost of implementing the permit and provide this information to Ecology upon request.

## TRIGGERED REPORTING ITEMS

### *Notification of Spills*

According to General Condition G3 in the permit, if WSDOT knows of a spill into its MS4 which could constitute a threat to human health, welfare, or the environment, WSDOT must notify Ecology. In this reporting period, Ecology was notified of 51 G3 spills as summarized in Appendix 3 of this report.

### *Compliance with Permit Obligations*

The permit requires WSDOT to notify Ecology if it fails to comply with an obligation in the permit. Under General Condition G20 of the permit, this notification must include a description of the non-compliance and the time period for which it is expected to continue. A G20 notification must also include actions taken or planned to reduce, eliminate, and prevent reoccurrence of the non-compliance. WSDOT did not need to submit any such notifications to Ecology during this reporting period.

## *Notification of Upsets*

The permit requires WSDOT to include a summary in this report of any G21 notifications to Ecology regarding upsets. An upset is an exceptional incident in which there is unintentional and temporary noncompliance due to factors beyond the reasonable control of WSDOT. WSDOT did not need to submit any such notifications to Ecology during this reporting period.

## *WSDOT's Stormwater Management Program Plan*

The permit requires WSDOT to implement a Stormwater Management Program comprised of the program components and requirements listed in permit section S5. WSDOT's SWMPP fulfills that obligation and documents the procedures and practices used to reduce the discharge of pollutants from storm sewer systems owned or operated by WSDOT. The SWMPP is updated annually and submitted with the Stormwater Report. It is available for review and comment anytime throughout the reporting period at <https://wsdot.wa.gov/construction-planning/protecting-environment/managing-stormwater-state-highways>. Feedback is reviewed and incorporated as appropriate during the annual update process.

## *Standards for Discharges*

The permit requires WSDOT to include a summary in this report of any actions taken regarding Special Condition S4 of the permit. These actions include notifying Ecology about any discharge from WSDOT's MS4 that causes or contributes to a known or likely violation of water quality standards in a receiving water body. WSDOT did not need to submit any such notifications to Ecology during this reporting period.



## TOTAL MAXIMUM DAILY LOADS IN THE PERMIT

TMDL implementation plans provide water quality targets and assign action items to permittees in watersheds to clean up polluted waters so that the water bodies meet state water quality standards. The permit requires WSDOT to comply with the action items and associated timelines listed in Appendix 3 of the permit. The permit currently includes 31 TMDLs statewide as seen in Figure 3 on page 8.

### *Newly Established TMDLs Expected to be Added to WSDOT's Permit*

- Budd Inlet Dissolved Oxygen TMDL
- Little Spokane River Dissolved Oxygen, pH, and Total Phosphorus TMDL
- Spokane River Polychlorinated Biphenyls TMDL
- Lower White River pH TMDL
- Padilla Bay Tributaries Fecal Coliform Bacteria TMDL
- Whatcom Creek Bacteria TMDL
- Mid-Yakima River Basin Bacteria TMDL
- Pilchuck River Temperature and Dissolved Oxygen TMDL

## IMPLEMENTING TMDL REQUIREMENTS

### *Actions Required by TMDLs*

The permit requires WSDOT to summarize the status of compliance with each of the TMDL-related action items in the permit. Table 4 in Appendix 1 of this report provides this

information. In addition to the actions listed in the summary table, WSDOT implemented the *Highway Runoff Manual* (HRM) in all TMDL areas as required by the permit.



**Figure 2.** Farming too close to the edge of the roadway can cause erosion as seen at this site identified on SR 272 during a highway evaluation required by a TMDL.

# Total Maximum Daily Loads

## *WSDOT's Involvement in TMDL Development*

WSDOT participates in Ecology's TMDL development process, including implementation planning. During this reporting period, WSDOT participated in the following TMDLs (with the pollutants of concern noted in parentheses).

- Soos Creek (fine sediment)
- Drayton Harbor (bacteria)

WSDOT also participated in the development process or implementation of the following impairment-related working groups:

- Our Green-Duwamish Partnership
- Puget Sound Nutrient Forum
- Spokane River Toxics Advisory Board
- Poverty Bay Shellfish Protection District Technical Committee
- Lake Campbell Cyanobacteria Management Plan
- Lake Stevens Plan for Salmonid Basins Project

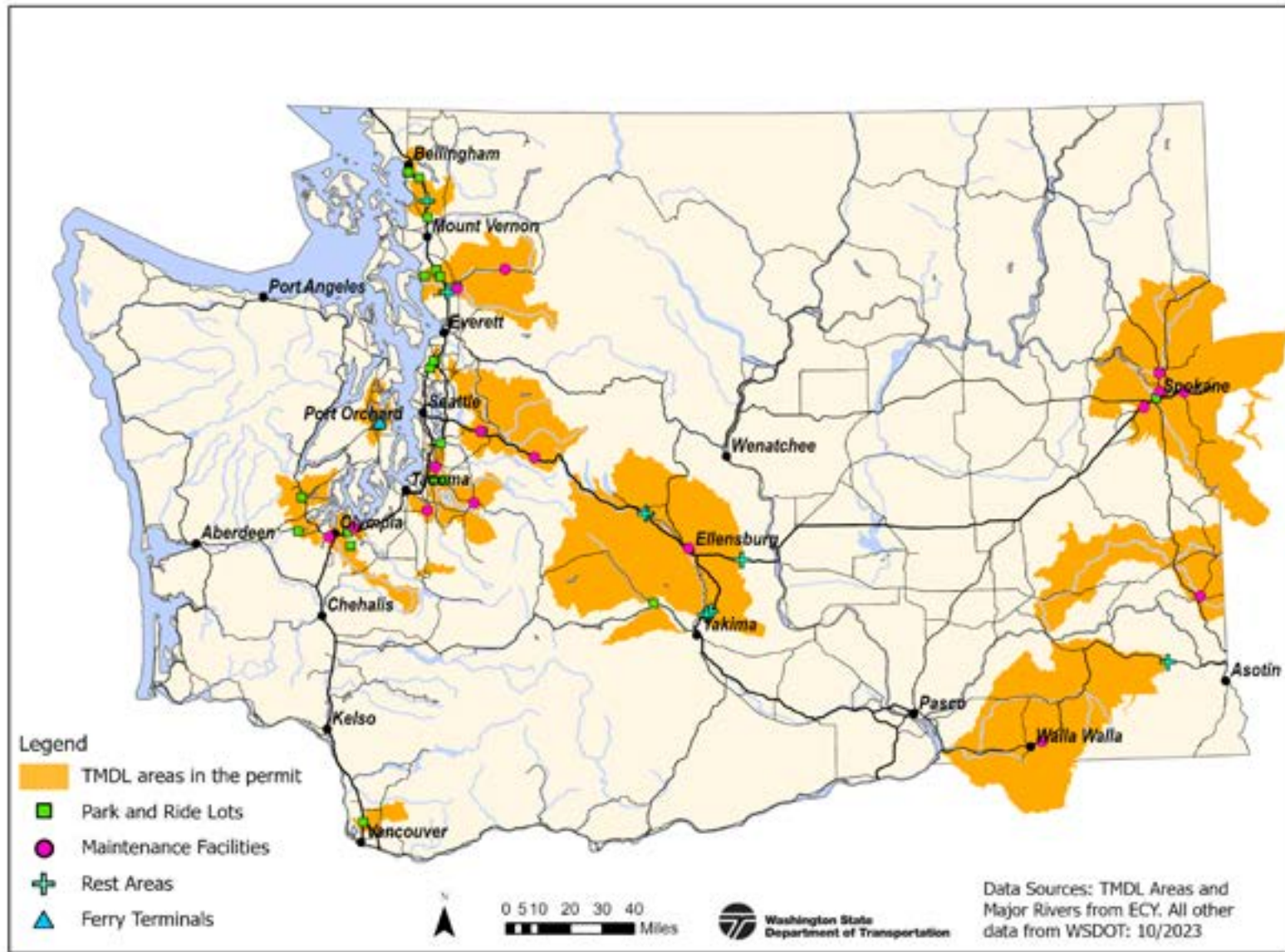


Figure 3. WSDOT facilities within TMDLs included in the permit.



## TEMPORARY EROSION AND SEDIMENT CONTROL

### *Certification and Training*

Construction projects use temporary erosion and sediment control (TESC) plans, which consist of a narrative and site plan sheets, to identify project-specific risks related to erosion and strategies for managing those risks. TESC plans must be kept on site and updated to reflect site conditions and BMP adaptive management.

WSDOT staff and consultants responsible for designing TESC plans and inspecting construction sites must take WSDOT's Construction Site Erosion and Sediment Control training class. Taking the class either renews current Certified Erosion and Sediment Control Lead (CESCL) certification or fulfills the eight-hour in-class component for new or expired certifications. A CESCL certification is required for anyone performing weekly site inspections required by the NPDES Construction Stormwater General Permit (CSWGP). WSDOT's class covers topics including the regulatory framework for construction activities, CSWGP compliance, spill prevention techniques, erosion and sediment control BMPs, and the TESC planning process. During this reporting period, WSDOT held four Construction Site Erosion and Sediment Control trainings and 198 people received the training, including 187 WSDOT staff,

**187** WSDOT staff received training. **136** staff earned or renewed a CESCL certification.



**Figure 4.** Slope stabilization using permeable/natural BMPs at the Elwha River Bridge project in Olympic Region.

six City of Snohomish employees, four WSDOT consultants, and one Washington Department of Fish and Wildlife employee.

## FALL ASSESSMENTS

Between September and November each year, WSDOT assesses active construction projects that meet criteria in WSDOT's *TESC Manual* for moderate to high risk of erosion. The assessor reviews site documentation and field conditions then compiles a report with recommendations which project management teams can use to better prepare for wet season work. In fall 2024, WSDOT assessed 12 construction projects.

## Summary and Lessons Learned from Fall Assessments

The permit requires WSDOT to assess projects for the following measures:

- Thoroughness of original erosion control plans
- Implementation of erosion control plan elements
- Responsiveness to changing field conditions

WSDOT evaluates the implementation of erosion control plan elements using the 13 planning elements identified in the CSWGP. Out of the 13 planning elements, two did not apply to any projects assessed in 2024. For the remaining 11 elements, Table 1 below shows how projects performed from the best to having the most challenges.


As reported in previous years, WSDOT continues to see challenges in projects' responsiveness to changing field conditions. While some projects had very good examples of covering slopes and stabilizing conveyances, there were several projects with evidence of turbid discharges, extensive exposed soils, and improper or poorly maintained BMPs. While we are seeing improvements, many projects still tend to manage TESC reactively and rely on BMPs as a last line of defense. This is the type of thinking that WSDOT strives to change.

WSDOT's Environmental Services and State Construction Offices have continued taking steps toward embracing a more wholistic proactive approach to TESC design and implementation across the agency, and are working together to develop strategies to strengthen a culture of proactive compliance. Some of the things WSDOT did to improve and address the challenges and trends identified included:

- Continued analyzing data collected through WSDOT's Environmental Compliance Assurance Process and Commitment Tracking System on non-compliance events related to TESC outside of the fall assessment time period to help identify training and support needs more comprehensively.
- Began tracking projects that have, or expect to get, a CSWGP to have a better idea of what type of project support is needed and when.
- Provided training webinars on the use of drones and aerial imagery to help identify and improve TESC management strategies, TESC plan design and review, and CSWGP transfer of coverage process and policies.

**Table 1.** Fall assessment findings of projects' ability to implement the erosion control plan elements.

Fewest Challenges	→	→	Most Challenges
Mark clearing limits	Protect slopes	Control pollutants	Control flow rates
Install sediment controls	Manage the project	Establish construction access	Stabilize soils
Protect drain inlets		Stabilize channels and outlets	Maintain BMPs



Other improvements identified that WDSOT plans to work on implementing during the next reporting period include:

- Focusing on shorter timelines for providing fall assessment reports to projects.
- Developing a stronger network of TESC support staff throughout the regions through training and increased coordination.
- Providing shorter, targeted, just in time trainings and reevaluate target staff and frequencies for trainings.



## PLANNING AND DESIGNING NEW FACILITIES

When WSDOT constructs or modifies transportation facilities, it incorporates stormwater management BMPs to minimize adverse effects of stormwater runoff on receiving water bodies. WSDOT uses its HRM and *Hydraulics Manual* to provide consistent design and planning procedures statewide and meet the level of stormwater management established by Ecology's stormwater management manuals.

### *Stormwater BMPs*

The permit requires WSDOT to report the number and type of stormwater BMPs built annually. A table summarizing the number and types of BMPs built statewide appears in Appendix 2 of this report.



### *Highway Runoff Manual Training*

The permit requires WSDOT to report the number of HRM training opportunities and the number of staff trained. WSDOT trains staff and consultants who design stormwater management BMPs to help ensure they understand and use the design procedures in the HRM. In this reporting period WSDOT offered two instructor-led virtual workshops, training 74 WSDOT staff, 16 local agency staff, and 48 consultant staff.

### *Tracking New Stormwater Outfalls, Discharge Points, and BMPs*

The permit requires WSDOT to enter key features and locations of newly constructed stormwater treatment and flow control facilities into a database. WSDOT currently reviews as-constructed contract plans (as-built plan sheets) and uses Geographic Information Systems (GIS) to manually map and document stormwater infrastructure in the Stormwater Features Inventory Database. WSDOT continues to research automation options to import the information directly into the Stormwater Features Inventory Database.

Additionally, for stormwater treatment and/or flow control BMPs, WSDOT has implemented a web application to tie existing project tracking and management information to individual BMPs. The application tracks each facility's lifecycle through design, construction, and completion. This is a requirement for WSDOT projects and will become a useful reporting and tracking tool for treatment of highway runoff on WSDOT right-of-way.

## RETROFITS

### *Prioritizing Retrofits*

Most of WSDOT's highways and facilities were built before the federal Clean Water Act and the Washington Water Pollution Control Act resulting in legacy stormwater impacts inherited with today's transportation system. With much of WSDOT's existing infrastructure lacking facilities to control stormwater flow or treat stormwater runoff, and with our current

# Stormwater Infrastructure

understanding of the importance of addressing pollution, the agency looks for opportunities to maximize our investment in rectifying legacy impacts by adding stormwater treatment through stormwater retrofits, both voluntarily to fulfill environmental stewardship goals and as required by the permit.

WSDOT continues updating its procedures and tools for its stormwater retrofit program to address legislative goals for stormwater retrofits established in the Move Ahead Washington funding package including salmon recovery and ecosystem health, reducing pollution, addressing health disparities, and cost effectiveness, with an emphasis on green infrastructure retrofit solutions. The updates also include agency goals around the Healthy Environment for All (HEAL) Act and consideration of tribal rights and interests.

Development of the updated Stormwater Retrofit Prioritization resulted in a publicly available [web map](#) that produces one-mile segments of WSDOT's mainline highway system, displaying potential high value stormwater retrofit candidate locations. This high-level screening tool is used by WSDOT staff to make planning decisions about which locations to recommend for scoping standalone stormwater retrofit projects, positioning WSDOT to be able to scope, design, and construct stormwater retrofits as funds are appropriated by the Legislature. WSDOT's ranked needs list for scoping standalone stormwater retrofit locations is annually updated with information from the Web Map, including valuable input on priority locations provided by tribes, local agencies, and interested parties often with a salmon recovery focus.

WSDOT is taking an approach that:

- Includes outside expertise and local knowledge
- Places value on partnership opportunities
- Elevates project benefits by aligning with other environmental investments being made at the watershed level

## *Tracking Retrofits*

The permit requires highway projects in the Puget Sound basin to meet more stringent project-triggered retrofit requirements than other regions of the state. For projects in the Puget Sound basin meeting the project-triggered retrofit requirement, for which retrofitting all existing impervious surfaces is deemed infeasible, the permit requires WSDOT to report the cost information used to make that determination. This cost equates to the amount of money WSDOT must spend on retrofits within the project limits or transfer to fund standalone stormwater retrofit projects (or a combination of both). During this reporting period, three projects transferred money to fund standalone retrofits:

- \$8,250 - I-5/Slater Road Interchange - Roundabout
- \$283,015 - SR 305/Port Madison, Agatewood Rd, Adas Will Ln - Safety Improvements
- \$144,910 - SR 305/Sam Snyder Creek - Remove Fish Barrier

WSDOT is required to report the number of standalone retrofits constructed. During this reporting period, no standalone retrofits were constructed. WSDOT is also required to report the number of acres of existing impervious surface retrofitted or reverted to pervious surface through retrofits, as well as where

and how much retrofitting took place. This information appears below in Table 2.

**Table 2.** Acres of Existing Impervious Surface Retrofitted or Reverted to Pervious

State Route	Region	Project Name	Existing Impervious Surface Retrofitted or Reverted to Pervious (acres)	Reason for Retrofit <sup>1</sup>
005	NWR	I-5/Slater Road Interchange - Roundabout	1.376	Project-Triggered Retrofit
020	NWR	SR 20/UNT to Coal Creek - Fish Passage	0.120	Opportunity Based Retrofit
009	NWR	UNT to Nookachamps and Hansen Creeks - Fish Passage	0.119	Opportunity Based Retrofit
002	NWR	US 2 Sexton Creek to Pilchuck River - Fish Passage	1.200	Opportunity Based Retrofit
305	OR	SR 305/Port Madison, Agatewood Rd, Adas Will Ln - Safety Improvements	0.154	Project-Triggered Retrofit and Opportunity Based
305	OR	SR 305/Sam Snyder Creek - Remove Fish Barrier	0.009	Project-Triggered Retrofit
108/101	OR	SR 108/US 101/Mason and Thurston County Fish Barriers/ Remove	0.099	Opportunity Based Retrofit
500	SW	SR 500/NE 42nd and 54th Ave - Intersection Improvements	0.588	Opportunity Based Retrofit

1. Standalone retrofits are stormwater projects that are planned, designed, and constructed with the sole purpose of mitigating stormwater impacts by adding or upgrading treatment and/or flow control to existing PGIS at prioritized locations.

Project-triggered stormwater retrofits are stormwater retrofits that are required by the HRM.

Opportunistic stormwater retrofits are retrofits that provide stormwater management beyond what is required to comply with the NPDES Permit as required in the HRM.

## STORMWATER SYSTEM MAPPING

### *Complete System Mapping*

WSDOT is required to map the MS4 for 79.5 centerline miles of highway each year. During this reporting period, WSDOT mapped 85.54 centerline miles of highway.

### *Mapping Methods*

To map the stormwater system, WSDOT uses office and field-based methods. In the office, WSDOT continues to research and map the information on as-built plan sheets. WSDOT staff use GIS to place the as-built plan sheet images where they belong on a map, then create points, lines, and polygons to represent stormwater infrastructure such as discharge points and outfalls, pipes, drainage inlets, BMPs, and ditches.

In the field, WSDOT crews use Global Positioning System (GPS) units to locate and document stormwater conveyance infrastructure and attributes. In areas where no, or minimal, infrastructure information exists, WSDOT locates and maps the infrastructure and documents all attribute information. In areas where a base level of information exists from in-office mapping efforts, field crews locate and update or confirm the information based on field observations.

### *Drainage Area Mapping*

WSDOT uses a combination of hydraulic design and field collected data to map drainage areas to the discharge points

of our stormwater systems. A priority is focused on mapping drainage areas associated with stormwater treatment and/or flow control BMPs, and to surface receiving waters. Designed drainage areas are digitized into GIS from WSDOT project hydraulic files where available. As initial verification of the designed drainage areas, and collection of additional drainage areas, high resolution aerial imagery and elevation data are used to estimate drainage breaks between stormwater conveyance systems defined through our ongoing MS4 mapping program.

### *GIS Layer Updates*

The permit requires WSDOT to report on the GIS data layers that were updated over the reporting period, which are:

- Drainage Areas
- Artificial discharge points
- Artificial path
- Debris racks
- Discharge points
- Drainage inlets
- Energy dissipaters
- Flow restrictors
- Pipe ends
- Pipes
- Ditches
- Roadside slopes
- Concrete barriers
- Curbs
- Stormwater ponds
- Stormwater vaults

## ILLICIT DISCHARGE DETECTION AND ELIMINATION

### *Illicit Discharge Detection and Elimination Program*

WSDOT's Illicit Discharge Detection and Elimination (IDDE) Program identifies and resolves illicit discharges and illegal connections that could adversely affect our stormwater system or property. WSDOT contacts emergency responders when coming upon a potentially hazardous or unknown pollutant.

As required by the permit, WSDOT's IDDE Program trains staff who, as part of their normal job responsibilities, may encounter or observe an illicit discharge or illegal connection to WSDOT's MS4 or property, to recognize and report illicit discharges and potential illegal connections. In March of this reporting period, WSDOT's IDDE eLearning training was updated. Unfortunately, the history of the training roster and attendees that took the course prior to March was lost. At the same time, a statewide hiring freeze went into effect, which significantly reduced the number of new employees trained. As a result, three WSDOT staff completed training through the eLearning IDDE program after the March training update. WSDOT will take care to maintain training rosters in the future to prevent further records management incidents.

### *New Reported Illicit Discharges and Illegal Connections*

WSDOT tracks all issues statewide and seeks remediation when necessary. WSDOT discovered 129 illicit discharges and 6 illegal connections during this reporting period, all of which

were resolved. WSDOT also tracked 299 traffic related spills that were addressed on WSDOT highways. Fifty-one of these spills required G3 notification to Ecology. Appendix 3 contains a table describing the discharges and connections, actions taken to eliminate them, and the status of the issues. All items included in Appendix 3 are uploaded to Ecology's Water Quality Web Portal as required by the permit.



## ROAD AND FACILITY MAINTENANCE AND OPERATIONS

### Facility Stormwater Pollution Prevention Plans

WSDOT implements stormwater pollution prevention plans (SWPPPs) at each of the maintenance facilities covered by the permit. The SWPPPs identify operational and structural BMPs and include spill prevention and response plans specific to each facility. The permit requires WSDOT to perform site inspections twice a year to ensure SWPPP implementation and to evaluate the effectiveness of the plans. In this reporting period, WSDOT conducted 65 of 66, or 99% of planned SWPPP site inspections for 33 facilities statewide.

### Training

WSDOT held two training courses on stormwater-related maintenance activities during this reporting period. In all, 188 maintenance staff were trained on topics including:

- Stormwater Pollution Prevention Plans
- Overview of the Endangered Species Act Regional Road Maintenance Program
- Understanding when and how to use BMPs
- Stormwater BMP maintenance
- Compliance monitoring and reporting requirements
- BMPs for emergency and road maintenance activities
- Field exercises installing erosion control BMPs
- Spill response

## TREATMENT AND FLOW CONTROL BMP MAINTENANCE

WSDOT completed 2,960 permanent stormwater BMP inspections in this reporting period. This represents 99 percent of planned BMP inspections and exceeds the 95 percent permit requirement. WSDOT is also required to correct stormwater BMP maintenance deficiencies within one year of identification for BMPs requiring typical maintenance and within two years of identification for BMPs requiring non-typical maintenance costing less than \$25,000 unless there are circumstances beyond WSDOT’s control. WSDOT corrected 100 percent of typical and non-typical maintenance deficiencies identified through triggering records and inspections for BMPs.

The permit requires WSDOT to prioritize BMPs that need non-typical repairs costing more than \$25,000 and BMPs originally built without access roads. Prioritization is based on the amount of time needed to complete repairs, cost, and available funding. Table 3 lists the number of BMPs that need non-typical repairs and documents corrections made during this reporting period.

**Table 3.** Permanent BMPs Requiring Additional Funding to Correct and Corrections Made.

Region	BMPs Requiring Repairs > \$25,000	BMPs Requiring Access Road	BMPs Corrected This Reporting Period (removed from count in first two columns)
Northwest	5		
Olympic	6	4	
Southwest	2		4



**Figure 5.** A media filter drain damaged by wheel path impact from heavy trucks is repaired by Southwest Region crews. Replacement of the media and vegetative strip cost \$40,000.

## CATCH BASIN MAINTENANCE

WSDOT inspected 27,572 catch basins during this reporting period. This represents 99 percent of planned inspections and exceeds the 95 percent permit requirement. The permit also requires WSDOT to correct 95 percent of deficiencies noted during inspections within six months of identification and 98 percent within a year unless there are circumstances beyond WSDOT's control. During this reporting period, WSDOT corrected 95 percent of catch basin deficiencies within six months and 98 percent of deficiencies within one year.

## *Reduced Inspection Frequency*

The permit allows WSDOT to reduce the inspection frequency of catch basins based on maintenance records of double the length of time of the proposed inspection frequency. After evaluating catch basin inspection records from 2019-2023, 4,530 catch basins were identified as meeting the criteria for a reduced inspection frequency of every two years and removed from the 2024-2025 inspection cycle. This criteria included four consecutive years of records identifying that a catch basin had not exceeded WSDOT maintenance standards, had not been cleaned, needed no future cleaning, and had a sump less than 50% full. Inspection updates for these 4,530 catch basins will be provided in the 2026 Stormwater Report.

## FERRY TERMINAL MAINTENANCE AND OPERATIONS

### *Terminal Stormwater Pollution Prevention Plans*

Similar to maintenance facility SWPPPs, Washington State Ferries (WSF) implements a SWPPP at each ferry terminal. WSF uses most of the BMPs identified in the SWPPP as standard procedures, regardless of whether a terminal is covered by the permit. Each terminal keeps a copy of the SWPPP on site and maintains a formal inspection log. To ensure the SWPPP is implemented properly, the permit requires WSF to inspect terminal sites with SWPPPs twice a year. During this reporting period, WSF completed 100 percent of planned inspections, exceeding the 95 percent permit requirement.

## *Training*

WSF uses a programmatic staff training approach, allowing them to meet the operational demands of nearly 450 scheduled daily sailings and staff schedules. As an example of the programmatic training approach, when a stormwater issue is noted during the monthly stormwater inspections, a corrective action is documented in the inspection log and discussed with the terminal supervisor. The inspector or the supervisor then informally trains terminal staff to resolve and prevent the issue.

In addition to the programmatic training approach, 368 employees assigned to work at WSF terminals received stormwater training during this reporting period, as well as all terminal supervisors.



## STORMWATER MONITORING AND EFFECTIVENESS STUDIES

WSDOT has two annual reports for NPDES studies that cover permit related highways and facilities monitoring activities over water year 2024 (October 1, 2023-September 30, 2024). The reports are submitted to Ecology by October 31st each year and made available here:

<https://wsdot.wa.gov/construction-planning/protecting-environment/managing-stormwater-state-highways>.

### *New Highway BMP Effectiveness Studies*

WSDOT planned and constructed two sites for the new highway BMP study that test the effectiveness of existing swales that are older than their expected life spans. One site is located in Vancouver at the intersection of State Route 500 and State Route 503, while the other is located at mile post 20.48 on State Route 18 near the base of Tiger Mountain. As of the end of this reporting period, WSDOT has collected enough water quality samples and hydrology data at both sites to meet statistical goals. WSDOT is currently working to complete the final study report.

### *New BMP Effectiveness Studies at Maintenance Facilities*

WSDOT constructed the two new compost amended bioswale (CAB) BMP effectiveness study sites in maintenance facilities in Tumwater and Spokane. As of the end of this reporting period,



**Figure 6.** A member of WSDOT’s Monitoring and Research Program prepares equipment at a monitoring site.

WSDOT has collected water quality samples and hydrology data at the Tumwater facility. WSDOT has completed adaptive management strategies at the Spokane site in order to obtain scientifically credible data. Sampling will commence in Spokane this water year.



## EDUCATION AND PUBLIC INVOLVEMENT

In addition to being a permit requirement, WSDOT considers education and public involvement good practice. WSDOT encourages continuous and meaningful public involvement through public meetings regarding project-specific environmental review documentation and alternatives for managing stormwater. WSDOT also encourages the public to comment on its Roadside Vegetation Management and Stormwater Management Program plans. Further, WSDOT's Adopt-a-Highway and Commute Trip Reduction programs help educate and involve the public in pollutant source reduction.

### *Adopt-a-Highway*

WSDOT's Adopt-a-Highway program gives organizations, groups, and businesses the opportunity to help keep stormwater clean by picking up the litter along highways. WSDOT collects and disposes of most of the bags filled by volunteer groups. During this reporting period, 614 volunteer groups reported 8,369 hours and picked up 14,131 bags of litter.



Businesses that sponsor sections of highway hire contractors to pick up and dispose of litter. During this reporting period, contractors hired by 275 sponsor groups picked up 8,635 bags of litter.

### *Commute Trip Reduction*

WSDOT works with local governments and employers at over 1,000 worksites to implement the Commute Trip Reduction (CTR) program in urban areas. The program aims to reduce the number of single-occupant cars driven during rush-hours and encourage participants to seek alternative means of transportation, thereby reducing congestion, increasing safety, and improving the quality of our air and water by reducing emissions and particulate pollutants.

CTR data is collected on a two-year cycle. During the 2023-25 cycle, more than 225,000 commuters from over 1,000 worksites provided information about their commutes. Their responses show that during a typical week:

- Approximately 10 million miles of single-occupancy vehicle traffic were prevented.
- Approximately 490,000 gallons of gas were saved.
- More than 4,000 metric tons of CO<sub>2</sub> emissions did not enter our air.
- 0.02 metric tons of particulate matter from brake wear and 0.01 metric tons of particulate matter from tire wear did not enter our water.
- CTR participation reduced tire wear and the amount of the tire rubber-derived chemical 6PPD-quinone introduced to Washington roadways. 6PPD-quinone is acutely toxic to a variety of aquatic species and responsible for the urban runoff mortality syndrome impacting coho salmon.

## ENVIRONMENTAL JUSTICE

The HEAL Act (Chapter 70A.02 RCW) outlines how state agencies should consider community needs and environmental justice in their work. The goals of this state environmental justice law align with legislative direction under Move Ahead Washington for WSDOT to implement its stormwater retrofit program in a way that addresses health disparities across the state. Consistent with the HEAL Act, WSDOT's goal is that at least 40% of standalone stormwater retrofit improvement investments across the state will be directed to eliminate or reduce health disparities for vulnerable populations and overburdened communities, as well as consideration of tribal rights and interests. WSDOT's prioritization web map utilizes the following tools to ensure that this element of prioritization is meaningfully incorporated into the stormwater retrofit program:

- Department of Health's Environmental Health Disparities Map.
- WSDOT tribal areas data – includes publicly available tribal lands data in addition to self-identified areas communicated by tribes to WSDOT's Tribal Liaison.
- WSDOT's Survey123 data garnered through engagement efforts - WSDOT elevates tribal provided recommendations for stormwater retrofit locations as top priorities for scoping.

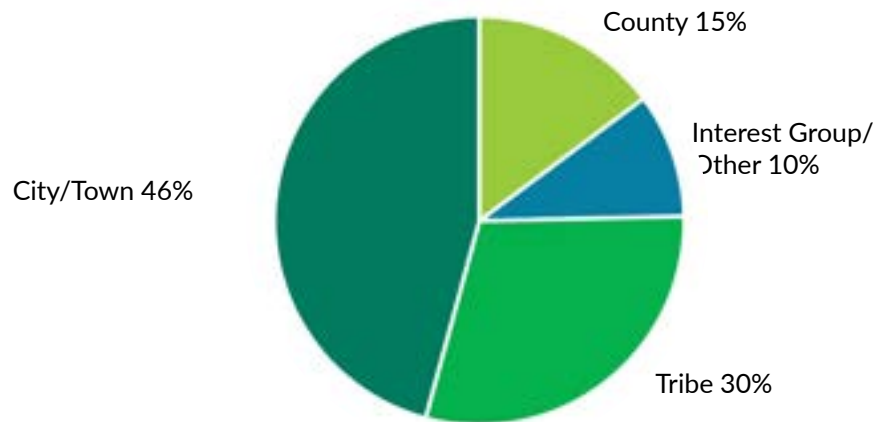
The prioritization web map was created with input from federal, state, and local governments, tribes, non-governmental organizations (NGOs), scientists, and other interested parties. Feedback continues to be welcome and will be incorporated into the planning tool reflecting best available science, diverse perspectives, interest, and experience, and expert

recommendations from the broad community involved in and interested in stormwater management particularly as it relates to species and habitat restoration, preservation, and recovery.

Included in the prioritization web map is a data set created through WSDOT engagement efforts via a Survey123, available at <https://ftp.wsdot.wa.gov/public/StormwaterRetrofitMoveAheadWashington/Survey123FlierForLocalTribalPriorities.pdf>, which solicits top priority locations from tribes, local agencies, and other interested parties. The survey invites partners to inform WSDOT of their top four priority locations based on elements such as their own watershed planning, species and habitat recovery goals, cultural priorities, environmental justice planning, and science and data insights. The engagement tool continues to be open for input. Since the survey opened in May 2023, 142 locations have been provided by 54 entities, including 13 tribes, with partnership interest indicated at 96% (136 of the 142) of the locations. WSDOT will use this valuable information to inform development of a ranked needs list for scoping stormwater retrofit projects.

WSDOT recognizes that statewide data has its limits in completely addressing environmental justice goals. The Survey123 offers a genuine effort to bridge that gap and invite participation from tribes and others to communicate their priorities. WSDOT is open to suggestions on additional ways to evaluate environmental justice considerations for stormwater retrofit prioritization and planning.

When funding for standalone stormwater retrofits is appropriated by the Legislature, the agency will be able to scope, design, and construct standalone stormwater retrofit



**Figure 7.** Retrofit priority locations provided by entities include tribes, cities, towns, counties, and other interest groups.

projects across the state that go above and beyond permit required stormwater management and achieve agency values of engagement, innovation, and stewardship. Ongoing maintenance is required for these environmental assets to function and perform as intended. Maintenance funding also needs to be considered.

## INTERNET SITE

WSDOT shares stormwater-related information with the public on its website. Updated information about the agency's stormwater permit program, municipal stormwater reports, and other activities can be found at <https://wsdot.wa.gov/construction-planning/protecting-environment/managing-stormwater-state-highways>. Documents posted on this webpage include the Stormwater Report, Stormwater Monitoring Reports, and Stormwater Management Program

Plan. No new stormwater research was added to the research library during the reporting period. WSDOT continued researching the "Characterization of First Flush Phenomenon and Total Storm Event Pollutant Distribution" during the reporting period. Additional WSDOT research is available at <https://wsdot.wa.gov/about/library-research-reports/research-reports>.

## KNOWLEDGE AND TECHNOLOGY TRANSFER

WSDOT maintains communication and coordinates with local, state, and national programs to share resources, promote and conduct stormwater research, and stay up to date on stormwater research developments and innovations. In addition to sharing information and knowledge with others, WSDOT greatly benefits from the information shared during events and from participating in advisory groups, committees, and partnerships, including:

- Permit coordination and implementation:
  - Phase I Permit Coordinators
  - Phase II NPDES Permit Coordinators
  - Central Sound Phase II Group
  - South Sound Phase II Group
  - North Sound Phase II Group
  - Municipal Environmental Justice Workgroup
  - Washington Stormwater Center Environmental Justice Salon
  - Stormwater Technical Advisory Committee
  - Regional Operations and Maintenance Program
  - Street Maintenance Solids Meetings
  - Stormwater Technology Testing Center

## Education and Public Involvement

- State and Regional Committees and Advisory Groups:
  - American Public Works Association Stormwater Managers Committee
  - Stormwater Technical Resource Center Advisory Committee
  - Ecology's Technology Assessment Protocol (TAPE) Stakeholder Advisory Group
  - American Society of Civil Engineers Water Resources Committee
  - ESA 4d Regional Road Maintenance Program
  - Clarks Creek Advisory Group
  - Stormwater Work Group State Agency Caucus
  - Interagency Project Team
  - WA State Interagency 6PPD Forum
  - Puget Sound Stormwater and Transportation Charter Group
  - 6PPD-q west coast DOTs/DEPs MS4s
  - 6PPD Action Plan Advisory Committee
  - Stormwater Work Group 6PPD Subgroup Meeting
  - Lower Duwamish Waterway Source Control Work Group
  - Our Green Duwamish
- National Committees and Advisory Groups:
  - American Association of State Highway and Transportation Officials
    - Committee on Environment and Sustainability
    - Stormwater Subcommittee
  - Transportation Research Board annual meetings
  - Transportation Research Board Committees on Hydrology and Hydraulics, Stormwater and Landscape and Environmental Design
  - National Cooperative Highway Research Program
- Interstate Technology and Regulatory Council Tire Anti-Degradants (6PPD) Team
- TransNow



Table 4. TMDL Implementation Summary Table

TMDL Name	WSDOT's Required Actions	Implementation Deadlines	Status of Compliance
<b>Deschutes River, Percival Creek, and Budd Inlet Tributaries TMDL (Temperature, Fecal Coliform, Dissolved Oxygen, pH, Fine Sediment)</b>	With NPDES Phase II areas WSDOT will implement permit obligations that address the TMDL-listed pollutants and participate in adaptive management as needed.	On-going	Not applicable in reporting period.
<b>Hangman Creek TMDL (Fecal Coliform, Temperature, TSS/Turbidity)</b>	Prepare addendum to the initial inventory findings report. Include updates on potential TMDL concerns, and follow-up actions taken and/or notification to others where a concern has been identified but occurred outside WSDOT's right-of-way and control.	Submit 6 months after initial inventory findings report	Summary of Inventory Findings Reports completed (2/8/13 and 2/28/14) and Addendum completed (8/29/14).
	If stormwater discharges that transport bacteria over natural background levels to listed receiving waters are found from sources within WSDOT's right-of-way and control, WSDOT will apply BMPs from their SWMPP or perform remediation to correct bacteria discharges. For run-on sources of bacteria identified by WSDOT that are from outside of WSDOT's right-of-way, WSDOT will notify Ecology and work cooperatively with Ecology, the local jurisdiction, and other parties involved for their resolution.	As needed	No new sources of bacteria identified in reporting period.
	To address TSS/turbidity associated with adjacent erosion (run-on) including delivery that results from farming activities, WSDOT will work cooperatively with Ecology, the local jurisdiction, and other parties involved to prevent sediment from entering area waterways. At a minimum, WSDOT will: 1.) spend one day annually performing a highway evaluation with Ecology regional staff to document up to 15 erosion problem sites, 2.) Collaborate with Ecology on developing a map of problem sites, 3.) Refer up to three priority sites annually to Ecology for follow-up, 4.) Adaptively manage with Ecology as needed.	On-going	WSDOT and Ecology staff completed the annual highway evaluation to identify erosion problem sites in March 2025. Ecology added highway evaluation pictures to their non-point source mapping tool. WSDOT referred priority erosion problem sites to Ecology on 5/27/25.

# TMDL Implementation Summary Table

TMDL Name	WSDOT's Required Actions	Implementation Deadlines	Status of Compliance
<b>Issaquah Creek Basin TMDL (Fecal Coliform)</b>	If stormwater discharges that transport bacteria over natural background levels to listed receiving waters are found from sources within WSDOT's right-of-way and control, WSDOT will apply BMPs from their SWMPP or perform remediation to correct bacteria discharges. For run-on sources of bacteria identified by WSDOT that are from outside of WSDOT's right-of-way, WSDOT will notify Ecology and work cooperatively with Ecology, the local jurisdiction, and other parties involved for their resolution.	As needed	Summary of Inventory Findings Report completed (3/28/12) and Addendum completed (9/28/12). No new sources identified in this reporting period.
<b>Little Bear Creek TMDL (Fecal Coliform)</b>	If stormwater discharges that transport bacteria over natural background levels to listed receiving waters are found from sources within WSDOT's right-of-way and control, WSDOT will apply BMPs from their SWMPP or perform remediation to correct bacteria discharges. For run-on sources of bacteria identified by WSDOT that are from outside of WSDOT's right-of-way, WSDOT will notify Ecology and work cooperatively with Ecology, the local jurisdiction, and other parties involved for their resolution.	As needed	Summary of Inventory Findings Report completed (3/28/12) and Addendum completed (9/28/12). On 1/2/2025 at milepost 3.34 on SR 9, orange water was discovered entering a WSDOT catch basin. After investigation, the connection was permitted and the orange substance was iron bacteria.
<b>Nisqually River Tributaries TMDL (Fecal Coliform and Dissolved Oxygen)</b>	Provide replacement bags at pet waste station on the dike at McAllister Creek or close access to the dike.	As needed	Replacement bags provided as needed.
	Participate in adaptive management meetings.	As needed	Not applicable in reporting period.

# TMDL Implementation Summary Table

TMDL Name	WSDOT's Required Actions	Implementation Deadlines	Status of Compliance
<b>North Fork Palouse River TMDL (Dissolved Oxygen, pH)</b>	If stormwater discharges that transport nitrogen over natural background levels to listed receiving waters are found from sources within WSDOT's right-of-way and control, WSDOT will apply BMPs from their SWMP or perform remediation to correct nitrogen discharges.	As needed	No new sources of nitrogen identified in reporting period.
	WSDOT will implement their IDDE program.	On-going	No IDDE events reported in reporting period.
	WSDOT will minimize the potential nitrogen impacts from hydro-seed and chemical treatments within the TMDL boundary.	On-going	Potential nitrogen impacts from hydro-seeding and chemical treatments are minimal due to the small amount of large construction projects in the North Fork Palouse watershed. It is standard practice to use compost and/or slow-release organic fertilizer in this watershed for various reasons, such as native seed requiring less nitrogen. When feasible, drill seeding is used instead of hydro-seeding.
	To address nitrogen delivery associated with adjacent erosion (run-on) including delivery that results from farming activities, WSDOT will work cooperatively with Ecology, the local jurisdiction, and other parties involved to prevent sediment from entering area waterways. At a minimum, WSDOT will: 1.) spend one day annually performing a highway evaluation with Ecology regional staff to document up to 15 erosion problem sites, 2.) Collaborate with Ecology on developing a map of the problem sites, 3.) Refer up to three priority sites annually to Ecology for follow-up, 4.) Adaptively manage with Ecology as needed.	On-going	WSDOT and Ecology staff completed the annual highway evaluation to identify erosion problem sites in March 2025. Ecology added highway evaluation pictures to their non-point source mapping tool. WSDOT referred priority erosion problem sites to Ecology on 5/27/25.

# TMDL Implementation Summary Table

TMDL Name	WSDOT's Required Actions	Implementation Deadlines	Status of Compliance
<b>Oakland Bay, Hammersley Inlet, and Selected Tributaries TMDL (Fecal Coliform)</b>	Work with Ecology, Squaxin Island Tribe, and Mason County to determine potential sources of fecal coliform within WSDOT's right-of-way and control on a limited number of high priority Highway <sup>3</sup> stormwater discharge locations to Oakland Bay. <sup>1</sup>	On-going	Not applicable in reporting period.
	Inventory highway discharge locations, implement pollutant source identification, and identification of illicit sources of bacteria to WSDOT's stormwater conveyance system within the TMDL boundary. Refer to Appendix 3 of the permit for specific details on prioritization and geographic scope of inventory efforts.	Complete by December 2015	Discharge inventory completed (1/6/15).
	Prepare inventory findings report.	Submit by December 2015	Summary of Inventory Findings Report completed (12/28/15).
	Prepare addendum to the initial inventory findings report. Include updates on potential TMDL concerns, and follow-up actions taken and/or notification to others where a concern has been identified but occurred outside WSDOT's right-of-way and control.	Submit 6 months after initial inventory findings report	Addendum completed (6/23/16).
	If stormwater discharges that transport bacteria over natural background levels to listed receiving waters are found from sources within WSDOT's right-of-way and control, WSDOT will apply BMPs from their SWMPP or perform remediation to correct bacteria discharges. For run-on sources of bacteria identified by WSDOT that are from outside of WSDOT's right-of-way, WSDOT will notify Ecology and work cooperatively with Ecology, the local jurisdiction, and other parties involved for their resolution.	As needed	Five spill related IDDE events were reported but no new sources of bacteria were identified in reporting period.

## TMDL Implementation Summary Table

TMDL Name	WSDOT's Required Actions	Implementation Deadlines	Status of Compliance
<b>Palouse River Watershed TMDL (Fecal Coliform)</b>	Implement fecal coliform programmatic approach <sup>2</sup> within the TMDL boundary. These efforts will focus identification of illicit sources of bacteria and sediment discharge to WSDOT's stormwater conveyance system. Refer to Appendix 3 of the permit for specific details on prioritization and geographic scope of inventory efforts.	Complete by March 2015	Discharge inventory completed (6/14).
	Prepare inventory findings report.	Submit by March 2015	Summary of Inventory Findings Report completed (1/5/15).
	Prepare addendum to the initial inventory findings report. Include updates on potential TMDL concerns, and follow-up actions taken and/or notification to others where a concern has been identified but occurred outside WSDOT's right-of-way and control.	Submit 6 months after initial inventory findings report	Addendum completed (7/21/15).
	If stormwater discharges that transport bacteria over natural background levels to listed receiving waters are found from sources within WSDOT's right-of-way and control, WSDOT will apply BMPs from their SWMPP or perform remediation to correct bacteria discharges. For run-on sources of bacteria identified by WSDOT that are from outside of WSDOT's right-of-way, WSDOT will notify Ecology and work cooperatively with Ecology, the local jurisdiction, and other parties involved for their resolution.	As needed	No new sources of bacteria identified in reporting period.
<b>Samish Bay Watershed TMDL (Fecal Coliform)</b>	Participate in TMDL adaptive management process.	On-going	Not applicable in reporting period.

## TMDL Implementation Summary Table

TMDL Name	WSDOT's Required Actions	Implementation Deadlines	Status of Compliance
<b>South Fork Palouse River TMDL (Fecal Coliform)</b>	Prepare addendum to the initial inventory findings report. Include updates on potential TMDL concerns, and follow-up actions taken and/or notification to others where a concern has been identified but occurred outside WSDOT's right-of-way and control.	Submit 6 months after initial inventory findings report	Summary of Inventory Findings Report completed (1/15/14) and Addendum completed (7/15/14).
	If stormwater discharges that transport bacteria over natural background levels to listed receiving waters are found from sources within WSDOT's right-of-way and control, WSDOT will apply BMPs from their SWMPP or perform remediation to correct bacteria discharges. For run-on sources of bacteria identified by WSDOT that are from outside of WSDOT's right-of-way, WSDOT will notify Ecology and work cooperatively with Ecology, the local jurisdiction, and other parties involved for their resolution.	As needed	No new sources of bacteria identified in reporting period.
	Annually inspect under the Highway 195 bridge in Colfax and taken any necessary action to prevent pigeons from roosting there.	Perform inspection annually; Initiate action to prevent pigeon roosting within 90 days of annual inspection	Annual inspection completed in May 2025. No pigeons were observed and minimal guano was reported to Ecology on 5/5/2025.
	Implement programmatic approach at Highway 195 stormwater discharge locations and stormwater conveyance ditches discharging into Dry Fork Creek south of Pullman, WA.	Complete by March 2015	Submitted to Ecology (7/15/14).

# TMDL Implementation Summary Table

TMDL Name	WSDOT's Required Actions	Implementation Deadlines	Status of Compliance
<b>South Prairie Creek Watershed TMDL (Fecal Coliform and Temperature)</b>	If stormwater discharges that transport bacteria over natural background levels to listed receiving waters are found from sources within WSDOT's right-of-way and control, WSDOT will apply BMPs from their SWMPP or perform remediation to correct bacteria discharges. For run-on sources of bacteria identified by WSDOT that are from outside of WSDOT's right-of-way, WSDOT will notify Ecology and work cooperatively with Ecology, the local jurisdiction, and other parties involved for their resolution.	As needed	No new sources of bacteria identified in reporting period.
	Participate in annual adaptive management meetings.	As needed	Not applicable in reporting period.
<b>Spokane River Watershed TMDL (Dissolved Oxygen)</b>	Prepare addendum to the initial inventory findings report. Include updates on potential TMDL concerns, and follow-up actions taken and/or notification to others where a concern has been identified but occurred outside WSDOT's right-of-way and control.	Submit 6 months after initial inventory findings report	Summary of Inventory Findings Report completed (10/15/13) and Addendum completed (4/15/14).
	If stormwater discharges that transport phosphorus and ammonia over natural background levels to listed receiving waters are found from sources within WSDOT's right-of-way and control, WSDOT will apply BMPs from their SWMPP or perform remediation to correct the situation. For run-on sources of phosphorus and ammonia identified by WSDOT that are from outside of WSDOT's right-of-way, WSDOT will notify Ecology and work cooperatively with Ecology, the local jurisdiction, and other parties involved for their resolution.	As needed	Eight IDDE events were reported during this reporting period, twelve were spills related to disabled vehicles or collisions. One event could have been a source of phosphorus or ammonia. Reporting party stated on 12/20/2024 that a concrete factory isn't disposing of wastewater correctly. Factory is well outside of WSDOT jurisdiction and does not impact WSDOT's system. Local project office was notified. This event occurred near milepost 16.9 on SR 290.

# TMDL Implementation Summary Table

TMDL Name	WSDOT's Required Actions	Implementation Deadlines	Status of Compliance
<b>Stillaguamish River Watershed TMDL (Fecal Coliform, Dissolved Oxygen, pH, Mercury, Arsenic and Temperature)</b>	If stormwater discharges that transport bacteria over natural background levels to listed receiving waters are found from sources within WSDOT's right-of-way and control, WSDOT will apply BMPs from their SWMPP or perform remediation to correct bacteria discharges. For run-on sources of bacteria identified by WSDOT that are from outside of WSDOT's right-of-way, WSDOT will notify Ecology and work cooperatively with Ecology, the local jurisdiction, and other parties involved for their resolution.	As needed	Summary of Inventory Findings Report completed (12/28/12) and Addendum completed (5/29/13). Several spill related IDDEs were reported but no new sources of bacteria were identified in reporting period.
	Provide replacement bags and maintain educational signage at pest waste management stations at I-5 rest areas.	As needed	Replacement bags provided as needed.
<b>Swamp Creek Basin TMDL (Fecal Coliform)</b>	If stormwater discharges that transport bacteria over natural background levels to listed receiving waters are found from sources within WSDOT's right-of-way and control, WSDOT will apply BMPs from their SWMPP or perform remediation to correct bacteria discharges. For run-on sources of bacteria identified by WSDOT that are from outside of WSDOT's right-of-way, WSDOT will notify Ecology and work cooperatively with Ecology, the local jurisdiction, and other parties involved for their resolution.	As needed	Summary of Inventory Findings Report completed (3/28/12) and Addendum completed (9/28/12). One disabled vehicle related IDDE event was reported but no new sources of bacteria were identified in reporting period.
<b>Teanaway River TMDL (Temperature)</b>	Maintain roads and roadside stormwater conveyance ditches to prevent entry of sediment into area waterways.	On-going	On-going

# TMDL Implementation Summary Table

TMDL Name	WSDOT's Required Actions	Implementation Deadlines	Status of Compliance
<b>Totten, Eld and Skookum Inlets Tributaries TMDL (Fecal Coliform and Temperature)</b>	If stormwater discharges that transport bacteria over natural background levels to listed receiving waters are found from sources within WSDOT's right-of-way and control, WSDOT will apply BMPs from their SWMPP or perform remediation to correct bacteria discharges. For run-on sources of bacteria identified by WSDOT that are from outside of WSDOT's right-of-way, WSDOT will notify Ecology and work cooperatively with Ecology, the local jurisdiction, and other parties involved for their resolution.	As needed	Summary of Inventory Findings Report completed (6/4/13) and Addendum completed (12/4/13). One spill related IDDE was reported but no new sources of bacteria were identified in reporting period.
Tucannon River Watershed TMDL (Temperature)	Maintain roads and roadside stormwater conveyance ditches to prevent entry of sediment into area waterways. <sup>3</sup>	On-going	On-going
<b>Upper Yakima River Watershed TMDL (Suspended Sediment, and Organochlorine Pesticide)</b>	Maintain roads and roadside stormwater conveyance ditches to prevent sediment from entering area waterways. <sup>3</sup>	On-going	On-going
<b>Walla Walla River Watershed TMDL (Fecal Coliform, PCBs, Chlorinated Pesticide, Temperature, pH and Dissolved Oxygen)</b>	The US 12 project will re-route 97 percent of the highway's traffic volume to the plateau located well above the Walla Walla River.	In progress	The current scheduled ad date for Phase 8 is July 2027.
	Where feasible, WSDOT will implement infiltration and/or dispersion to address the pollutants covered under this TMDL.	On-going	On-going
	WSDOT will follow the current Integrated Roadside Vegetation Management Plan (South Central Region, Area 4) within the Walla Walla TMDL boundary.	On-going	On-going

# TMDL Implementation Summary Table

TMDL Name	WSDOT's Required Actions	Implementation Deadlines	Status of Compliance
Bear-Evans TMDL (Fecal Coliform, Dissolved Oxygen, and Temperature)	Implement WSDOT's NPDES municipal permit obligations that address the TMDL-listed pollutants.	On-going	On-going
Clarks Creek TMDL (Dissolved Oxygen, Sediment)			
Green River TMDL (Temperature)			
Henderson Inlet Watershed TMDL (Fecal Coliform)			
Liberty Bay Watershed TMDL (Fecal Coliform)			
Newaukum Creek TMDL (Temperature)			
Puyallup River Watershed TMDL (Fecal Coliform)			
Salmon Creek Watershed TMDL (Temperature)			
Sinclair and Dyes Inlet TMDL (Fecal Coliform)			
Snoqualmie River TMDL (Temperature)			
Upper Naches River and Cowiche Creek TMDL (Temperature)			
Whatcom, Squalicum and Padden Creeks TMDL (Temperature)			

1. This work may include but is not limited to, site visits, data review, and collaborative problem solving. If sources are identified within WSDOT's control, WSDOT will develop a plan and initiate efforts to apply best management practices from their SWMPP or perform remediation to correct the situations.
2. For information regarding WSDOT's programmatic approach, please refer to Appendix 3 of the permit.
3. WSDOT implements the Regional Road Maintenance ESA Program (<https://wsdot.wa.gov/construction-planning/protecting-environment/regional-roadside-maintenance>) covering routine maintenance activities related to aspects of WSDOT's stormwater facilities and stream crossings.



Table 5. Stormwater BMPs Built Statewide During the 2025 Reporting Period

State Route	Region	In Permit Area	In TMDL Area	Project Name	Infiltration <sup>1</sup>	Dispersion <sup>2</sup>	Biofiltration <sup>3</sup>	Wet Pool <sup>4</sup>	Other	Total
005	NWR	Yes	No	I-5/Slater Road Interchange - Roundabout			4	2		6
020	NWR	No	No	SR 20/UNT to Coal Creek - Fish Passage			2			2
009	NWR	Portions	Yes	UNT to Nookachamps and Hansen Creeks - Fish Passage			4			4
002	NWR	Yes	Yes	US 2 Sexton Creek to Pilchuck River - Fish Passage			1			1
395/NSC	ER	Yes	Yes	US 395/NSC Spokane River to Columbia - Shared Use Path		9				9
106	OR	No	No	SR 106/Twanoh Creek - Remove Fish Barrier			1			1
305	OR	Yes	No	SR 305/Port Madison, Agatewood Rd, Adas Will Ln - Safety Improvements			4	2		6
305	OR	Yes	Yes	SR 305/Sam Snyder Creek - Remove Fish Barrier			2	1		3
108/101	OR	No	Yes	SR 108/US 101/Mason and Thurston County Fish Barriers/Remove			16			16
014	SW	Yes	No	SR 14/I-205 to SE 164th Avenue-Auxiliary Lanes			6	2		8
500	SW	Yes	Yes	SR 500/NE 42nd and 54th Ave - Intersection Improvements	1		1		1	3
Total					1	9	41	7	1	59

1. Infiltration includes: Infiltration Trench, Infiltration Pond, Infiltration Swale, Infiltration Vault, and Drywell.

2. Dispersion includes: Natural Dispersion, and Engineered Dispersion.

3. Biofiltration includes: Biofiltration Swale, Wet Biofiltration Swale, Bioinfiltration Pond, Vegetated Filter Strip, Compost Amended Vegetated Filter Strip, and Media Filter Drain.

4. Wet Pool includes: Constructed Stormwater Treatment Wetland - Detention Pond, Combined Stormwater Treatment Wetland/Detention Pond, Constructed Stormwater Treatment Wetland, Combined Wet/Detention Pond, and Detention Pond.



Table 6. Summary of IDDE Issues and Remediation Activities

Date	Type of Discharge	State Route	Milepost	Discovery	Pollutant	Action Taken	G3 Notification to Ecology	Status
7/1/2024	Discharge/Traffic Spill	5	260	WSDOT	Oil	Cleaned	No	Resolved
7/2/2024	Discharge/Traffic Spill	290	9.42	WSP	Hydraulic Oil	Cleaned	No	Resolved
7/2/2024	Discharge/Traffic Spill	97	241	WSP	Oil		No	Resolved
7/4/2024	Discharge/Traffic Spill	5	173.75	Citizen	Diesel	Cleaned	No	Resolved
7/5/2024	Discharge/Traffic Spill	12	14.76	WSP	Oil	Cleaned	No	Resolved
7/5/2024	Discharge/Traffic Spill	17	125	WSP	Fuel		No	Resolved
7/7/2024	Discharge/Traffic Spill	5	49	WSP	Diesel		No	Resolved
7/7/2024	Discharge/Traffic Spill	5	153.1	WSP	Diesel	Cleaned	No	Resolved
7/8/2024	Discharge/Traffic Spill	101	281	WSP	Diesel	Cleaned	Yes	Resolved
7/10/2024	Discharge/Traffic Spill	527	7.3	City of Mill Creek	Vehicle Fluids	Cleaned	No	Resolved
7/10/2024	Discharge/Traffic Spill	405	10.2	WSDOT	Diesel	Cleaned	No	Resolved
7/10/2024	Discharge/Traffic Spill	17	28	WSP	Unknown	Cleaned	No	Resolved
7/13/2024	Discharge/Traffic Spill	97	217	WSP	Vehicle Fluids		Yes	Resolved
7/15/2024	Discharge/Traffic Spill	205	28.3	WSDOT	Paint	Cleaned	No	Resolved
7/15/2024	Discharge/Traffic Spill	97	293	WSP	Vehicle Fluids	Cleaned	No	Resolved
7/15/2024	Discharge/Traffic Spill	17	87.5	WSP	Road Tar	Cleaned	Yes	Resolved
7/16/2024	Discharge/Traffic Spill	5	119.01	WSP	Diesel	Cleaned	No	Resolved
7/17/2024	Discharge/Traffic Spill	101	89.02	WSP	Oil	Cleaned	No	Resolved
7/18/2024	Discharge/Traffic Spill	20	64.9	WSP	Paint		No	Resolved
7/19/2024	Discharge/Traffic Spill	170	2	WSP	Diesel	Cleaned	No	Resolved
7/22/2024	Discharge/Traffic Spill	261	29.39	WSDOT	Oil	Cleaned	No	Resolved
7/25/2024	Discharge/Traffic Spill	14	8.5	WSP	Diesel	Cleaned	No	Resolved
7/27/2024	Discharge/Traffic Spill	90	190	WSP	Diesel	Cleaned	No	Resolved

## Detailed IDDE Issues Table

Date	Type of Discharge	State Route	Milepost	Discovery	Pollutant	Action Taken	G3 Notification to Ecology	Status
7/29/2024	Discharge/Traffic Spill	82	7	State Emergency Ops	Diesel		No	Resolved
7/29/2024	Discharge/Traffic Spill	5	157.18	City of Seattle	Oil	Cleaned	No	Resolved
7/31/2024	Discharge/Traffic Spill	90	9.21	WSP	Vehicle Fluids	Cleaned	No	Resolved
8/2/2024	Discharge/Traffic Spill	5	49.5	WSDOT	Oil	Cleaned	No	Resolved
8/2/2024	Discharge/Traffic Spill	5	156	TMS	Fuel	Cleaned	No	Resolved
8/5/2024	Discharge/Traffic Spill	308	1.53	Citizen	Diesel	Cleaned	No	Resolved
8/5/2024	Discharge/Traffic Spill	405	18.1	WSDOT	Turbid Water		Yes	Resolved
8/6/2024	Discharge/Traffic Spill	5	133.35	WSP	Fuel	Cleaned	No	Resolved
8/6/2024	Discharge/Traffic Spill	5	138.5	WSP	Vehicle Fluids	Cleaned	No	Resolved
8/6/2024	Illicit Discharge	82	7	WSDOT	Asbestos	Cleaned	No	Resolved
8/12/2024	Discharge/Traffic Spill	90	291.62	WSP	Vehicle Fluids	Cleaned	No	Resolved
8/13/2024	Discharge/Traffic Spill	24	0	WSP	Hydraulic Oil		No	Resolved
8/13/2024	Discharge/Traffic Spill	90	7.35	Recology	Coolant	Cleaned	No	Resolved
8/13/2024	Discharge/Traffic Spill	509	24.83	Recology	Coolant	Cleaned	No	Resolved
8/14/2024	Discharge/Traffic Spill	599	1	King County Metro	Fuel	Cleaned	No	Resolved
8/14/2024	Discharge/Traffic Spill	99	27	TMS	Fuel	Cleaned	No	Resolved
8/15/2024	Discharge/Traffic Spill	546	6	WSP	Oil	Cleaned	No	Resolved
8/16/2024	Discharge/Traffic Spill	5	209.5	Snohomish County Fire	Vehicle Fluids	Cleaned	No	Resolved
8/16/2024	Illicit Discharge	5	98.3	WSDOT	Unknown	Cleaned	No	Resolved
8/19/2024	Illicit Discharge	101	233.45	Citizen	Unknown		No	Resolved
8/20/2024	Discharge/Traffic Spill	3	0.58	WSDOT	Vehicle Fluids	Cleaned	Yes	Resolved
8/21/2024	Discharge/Traffic Spill	410	21.41	City of Buckley	Concrete	Cleaned	No	Resolved
8/23/2024	Illicit Discharge	3	41	Contractor	Turbid Water		Yes	Resolved
8/24/2024	Discharge/Traffic Spill	5	153.48	TMS	Oil		No	Resolved

## Detailed IDDE Issues Table

Date	Type of Discharge	State Route	Milepost	Discovery	Pollutant	Action Taken	G3 Notification to Ecology	Status
8/24/2024	Discharge/Traffic Spill	5	230	TMS	Transmission fluid	Cleaned	No	Resolved
8/25/2024	Discharge/Traffic Spill	12	8.39	WSP	Oil		No	Resolved
8/26/2024	Illicit Connection	302	2.44	WSDOT	Unknown		Yes	Resolved
8/27/2024	Discharge/Traffic Spill	5	142.2	TMS	Oil	Cleaned	No	Resolved
8/27/2024	Discharge/Traffic Spill	5	165	WSDOT	Fuel	Cleaned	Yes	Resolved
8/28/2024	Discharge/Traffic Spill	99	27.1	TMS	Oil	Cleaned	No	Resolved
8/28/2024	Discharge/Traffic Spill	97	313.3	Ecology	Fungicide		No	Resolved
8/28/2024	Discharge/Traffic Spill	112	61	Citizen	Paint		Yes	Resolved
8/29/2024	Discharge/Traffic Spill	90	5.8	King County Metro	Diesel	Cleaned	No	Resolved
8/29/2024	Discharge/Traffic Spill	97	51	Ecology	Vehicle Fluids		No	Resolved
9/4/2024	Discharge/Traffic Spill	3	7.24	WSP	Oil		No	Resolved
9/5/2024	Discharge/Traffic Spill	16	1.16	WSP	Specstrip	Cleaned	No	Resolved
9/6/2024	Discharge/Traffic Spill	90	6.25	Seattle Fire Dept	Vehicle Fluids		Yes	Resolved
9/7/2024	Illicit Discharge	3	41.1	Contractor	Turbid Water		Yes	Resolved
9/11/2024	Discharge/Traffic Spill	11	2.85	WSP	Diesel		No	Resolved
9/11/2024	Illicit Connection	18	1	Citizen	Sewage		No	Resolved
9/12/2024	Discharge/Traffic Spill	161	29.49	WSP	Oil	Cleaned	No	Resolved
9/15/2024	Discharge/Traffic Spill	90	10.1	WSDOT	Vehicle Fluids	Cleaned	No	Resolved
9/16/2024	Discharge/Traffic Spill	503	2.5	WSDOT	Fuel	Cleaned	No	Resolved
9/16/2024	Discharge/Traffic Spill	5	234.76	WSP	Oil	Cleaned	No	Resolved
9/16/2024	Illicit Discharge	3	41.1	Contractor	Turbid Water		Yes	Resolved
9/17/2024	Discharge/Traffic Spill	18	26.3	WSP	Fuel	Cleaned	No	Resolved
9/17/2024	Discharge/Traffic Spill	24	38.7	Hanford Patrol	Diesel	Cleaned	No	Resolved
9/18/2024	Discharge/Traffic Spill	2	12	Seattle PD	Chemicals	Cleaned	No	Resolved

## Detailed IDDE Issues Table

Date	Type of Discharge	State Route	Milepost	Discovery	Pollutant	Action Taken	G3 Notification to Ecology	Status
9/18/2024	Discharge/Traffic Spill	9	20.55	WSP	Oil		No	Resolved
9/18/2024	Illicit Discharge	17	135	WSP	Apple Juice	Cleaned	No	Resolved
9/19/2024	Discharge/Traffic Spill	5	133.69	WSP	Diesel	Cleaned	No	Resolved
9/20/2024	Discharge/Traffic Spill	5	164.5	WSP	Fuel	Cleaned	No	Resolved
9/23/2024	Discharge/Traffic Spill	205	26	WSDOT	Hydraulic Oil	Cleaned	No	Resolved
9/23/2024	Discharge/Traffic Spill	20	30	Island County	Gasoline	Cleaned	No	Resolved
9/25/2024	Discharge/Traffic Spill	5	104.02	WSP	Fuel	Cleaned	No	Resolved
9/27/2024	Discharge/Traffic Spill	243	4	WSP	Diesel	Cleaned	No	Resolved
9/27/2024	Illicit Discharge	90	5.62	Contractor	Turbid Water		Yes	Resolved
9/27/2024	Illicit Discharge	90	25.8	Contractor	Turbid Water		Yes	Resolved
9/28/2024	Discharge/Traffic Spill	5	127.48	WSDOT	Milk	Cleaned	No	Resolved
10/4/2024	Discharge/Traffic Spill	203	22.35	WSP	Fuel	Cleaned	No	Resolved
10/4/2024	Illicit Discharge	90	25.45	Contractor	Turbid Water		Yes	Resolved
10/4/2024	Illicit Discharge	18	27.81	Contractor	Turbid Water	Cleaned	Yes	Resolved
10/5/2024	Discharge/Traffic Spill	5	255	WSP	Cement	Cleaned	No	Resolved
10/6/2024	Discharge/Traffic Spill	5	114.86	South Sound 911	Oil	Cleaned	No	Resolved
10/9/2024	Discharge/Traffic Spill	167	9.64	WSP	Oil	Cleaned	No	Resolved
10/10/2024	Illicit Discharge	90	25.75	Contractor	Turbid Water		Yes	Resolved
10/14/2024	Discharge/Traffic Spill	90	287.83	WSP	Oil	Cleaned	No	Resolved
10/16/2024	Discharge/Traffic Spill	510	4.01	WSP	Cement	Cleaned	No	Resolved
10/18/2024	Discharge/Traffic Spill	5	76.8	WSP	Fuel	Cleaned	No	Resolved
10/18/2024	Illicit Discharge	90	25.85	Contractor	Turbid Water	Cleaned	Yes	Resolved
10/18/2024	Illicit Discharge	18	27.6	Contractor	Turbid Water	Cleaned	Yes	Resolved
10/19/2024	Discharge/Traffic Spill	5	147.71	TMS	Vehicle Fluids	Cleaned	No	Resolved

## Detailed IDDE Issues Table

Date	Type of Discharge	State Route	Milepost	Discovery	Pollutant	Action Taken	G3 Notification to Ecology	Status
10/20/2024	Discharge/Traffic Spill	5	18	WSP	Vehicle Fluids	Cleaned	No	Resolved
10/21/2024	Discharge/Traffic Spill	5	125	WSP	Fuel	Cleaned	No	Resolved
10/22/2024	Discharge/Traffic Spill	5	198	WSP	Diesel	Cleaned	No	Resolved
10/22/2024	Discharge/Traffic Spill	90	220	Adams County	Fuel		No	Resolved
10/22/2024	Discharge/Traffic Spill	9	78.9	WSP	Vehicle Fluids		Yes	Resolved
10/22/2024	Illicit Discharge	99	10.87	Citizen	Oil		No	Resolved
10/23/2024	Illicit Discharge	241	10.57	Citizen	Trash		No	Resolved
10/24/2024	Illicit Discharge	18	27.69	Contractor	Turbid Water	Cleaned	Yes	Resolved
10/25/2024	Discharge/Traffic Spill	18	18	WSP	Vehicle Fluids	Cleaned	No	Resolved
10/25/2024	Discharge/Traffic Spill	167	23.6	King County Metro	Coolant	Cleaned	No	Resolved
10/25/2024	Discharge/Traffic Spill	410	70.5	WSDOT	Oil	Cleaned	Yes	Resolved
10/26/2024	Discharge/Traffic Spill	5	165.9	WSP	Milk	Cleaned	Yes	Resolved
10/27/2024	Discharge/Traffic Spill	5	148.68	TMS	Oil	Cleaned	No	Resolved
10/29/2024	Discharge/Traffic Spill	90	10.49	WSP	Oil	Cleaned	No	Resolved
10/30/2024	Discharge/Traffic Spill	221	0	Benton County Fire	Fuel		No	Resolved
10/30/2024	Discharge/Traffic Spill	5	156	WSP	Fuel	Cleaned	No	Resolved
10/30/2024	Discharge/Traffic Spill	5	229	WSP	Diesel	Cleaned	No	Resolved
10/30/2024	Discharge/Traffic Spill	5	162.6	Citizen	Vehicle Fluids		Yes	Resolved
10/31/2024	Discharge/Traffic Spill	99	17.71	WA EMD	Oil	Cleaned	No	Resolved
10/31/2024	Discharge/Traffic Spill	6	19	WSP	Medical Waste	Cleaned	No	Resolved
10/31/2024	Discharge/Traffic Spill	20	127.45	WSP	Hydraulic Oil	Cleaned	No	Resolved
10/31/2024	Discharge/Traffic Spill	12	411	Garfield County	Fuel		No	Resolved
10/31/2024	Illicit Connection	N/A	N/A	WSDOT	Turbid Water		Yes	Resolved
10/31/2024	Illicit Discharge	500	1.65	WSDOT	Turbid Water	Cleaned	Yes	Resolved

## Detailed IDDE Issues Table

Date	Type of Discharge	State Route	Milepost	Discovery	Pollutant	Action Taken	G3 Notification to Ecology	Status
10/31/2024	Illicit Discharge	5	148.4	Seattle Public Utilities	Oil		Yes	Resolved
11/1/2024	Discharge/Traffic Spill	161	30.35	Puyallup PD	Oil	Cleaned	No	Resolved
11/1/2024	Discharge/Traffic Spill	20	127.45	WSDOT	Hydraulic Oil	Cleaned	Yes	Resolved
11/1/2024	Illicit Discharge	405	7.4	WSDOT	Turbid Water	Cleaned	Yes	Resolved
11/1/2024	Illicit Discharge	18	27.7	Contractor	Turbid Water	Cleaned	Yes	Resolved
11/4/2024	Discharge/Traffic Spill	18	2.53	TMS	Oil	Cleaned	No	Resolved
11/4/2024	Illicit Discharge	405	7.9	Contractor	Turbid Water	Cleaned	Yes	Resolved
11/4/2024	Illicit Discharge	101	184.51	Contractor	Turbid Water	Cleaned	Yes	Resolved
11/5/2024	Discharge/Traffic Spill	281	4.21	WSDOT	Oil	Cleaned	No	Resolved
11/5/2024	Illicit Discharge	303	3.33	Kitsap County	Turbid Water		Yes	Resolved
11/5/2024	Illicit Discharge	18	27.69	Contractor	Turbid Water		Yes	Resolved
11/6/2024	Discharge/Traffic Spill	240	20.5	WSP	Fuel	Cleaned	No	Resolved
11/6/2024	Illicit Connection	508	7.91	WSDOT	Unknown		Yes	Resolved
11/10/2024	Discharge/Traffic Spill	101	262.72	WSP	Fuel		Yes	Resolved
11/11/2024	Discharge/Traffic Spill	505	18.5	WSP	Diesel		Yes	Resolved
11/11/2024	Illicit Discharge	522	11.3	Contractor	Turbid Water	Cleaned	Yes	Resolved
11/12/2024	Discharge/Traffic Spill	7	50.21	WSP	Vehicle Fluids	Cleaned	No	Resolved
11/12/2024	Discharge/Traffic Spill	82	113	WSP	Fuel	Cleaned	No	Resolved
11/12/2024	Illicit Discharge	405	7.9	Contractor	Turbid Water		Yes	Resolved
11/12/2024	Illicit Discharge	405	10.2	WSDOT	Turbid Water	Cleaned	Yes	Resolved
11/12/2024	Illicit Discharge	18	25.61	Contractor	Turbid Water	Cleaned	Yes	Resolved
11/13/2024	Discharge/Traffic Spill	522	16.6	WSP	Diesel	Cleaned	No	Resolved
11/13/2024	Discharge/Traffic Spill	14	69	WSP	Fuel	Cleaned	No	Resolved
11/15/2024	Illicit Discharge	405	23.53	Ecology	Turbid Water	Cleaned	Yes	Resolved

## Detailed IDDE Issues Table

Date	Type of Discharge	State Route	Milepost	Discovery	Pollutant	Action Taken	G3 Notification to Ecology	Status
11/15/2024	Illicit Discharge	405	23.6	Contractor	Turbid Water		Yes	Resolved
11/17/2024	Discharge/Traffic Spill	12	176.5	Yakima Fire Dept	Fuel	Cleaned	No	Resolved
11/17/2024	Discharge/Traffic Spill	5	210	WSDOT	Oil		Yes	Resolved
11/18/2024	Illicit Discharge	105	46.9	Environmental Group	Oil	Cleaned	No	Resolved
11/18/2024	Illicit Discharge	405	18.1	Contractor	Turbid Water		Yes	Resolved
11/19/2024	Illicit Discharge	522	11.25	WSDOT	Turbid Water		Yes	Resolved
11/19/2024	Illicit Discharge	405	23.65	WSDOT	Turbid Water		Yes	Resolved
11/20/2024	Discharge/Traffic Spill	14	176	WSP	Fuel	Cleaned	No	Resolved
11/20/2024	Illicit Discharge	9	54.4	Citizen	Transformer oil	Cleaned	No	Resolved
11/22/2024	Illicit Discharge	169	2.3	GeoEngineers	Transformer oil	Cleaned	No	Resolved
11/22/2024	Illicit Discharge	516	2.1	Contractor	Turbid Water		Yes	Resolved
11/23/2024	Discharge/Traffic Spill	101	78.78	WSP	Oil	Cleaned	No	Resolved
11/23/2024	Illicit Discharge	90	25.76	Contractor	Turbid Water	Cleaned	Yes	Resolved
11/23/2024	Illicit Discharge	18	27.57	Contractor	Turbid Water		Yes	Resolved
11/25/2024	Discharge/Traffic Spill	16	0.41	WSP	Vehicle Fluids	Cleaned	No	Resolved
11/25/2024	Illicit Discharge	405	5.09	Contractor	Turbid Water		No	Resolved
11/25/2024	Illicit Discharge	405	7.6	Contractor	Turbid Water		Yes	Resolved
11/25/2024	Illicit Discharge	405	10.2	WSDOT	Turbid Water	Cleaned	Yes	Resolved
11/26/2024	Illicit Discharge	18	27.57	WSDOT	Turbid Water	Cleaned	Yes	Resolved
11/29/2024	Discharge/Traffic Spill	5	183.61	Ecology	Coolant	Cleaned	No	Resolved
11/30/2024	Discharge/Traffic Spill	99	1.2	Milton PD	Vehicle Fluids	Cleaned	No	Resolved
12/1/2024	Discharge/Traffic Spill	512	2.22	West Pierce Fire	Oil	Cleaned	No	Resolved
12/3/2024	Illicit Discharge	161	34.05	WSDOT	Turbid Water	Cleaned	Yes	Resolved
12/4/2024	Discharge/Traffic Spill	503	7	WSDOT	Fuel	Cleaned	No	Resolved

## Detailed IDDE Issues Table

Date	Type of Discharge	State Route	Milepost	Discovery	Pollutant	Action Taken	G3 Notification to Ecology	Status
12/4/2024	Illicit Discharge	14	67.7	BNSF	Locomotive oil	Cleaned	No	Resolved
12/5/2024	Illicit Discharge	405	10.1	Ecology	Turbid Water		Yes	Resolved
12/6/2024	Discharge/Traffic Spill	16	25.14	WSP	Diesel	Cleaned	No	Resolved
12/6/2024	Discharge/Traffic Spill	18	25.4	WSP	Diesel	Cleaned	Yes	Resolved
12/7/2024	Discharge/Traffic Spill	16	23	WSP	Vehicle Fluids		No	Resolved
12/7/2024	Discharge/Traffic Spill	90	59.6	WSP	Fuel	Cleaned	Yes	Resolved
12/9/2024	Illicit Discharge	405	7.6	Contractor	Turbid Water		Yes	Resolved
12/10/2024	Discharge/Traffic Spill	5	230	WSP	Fertilizer	Cleaned	Yes	Resolved
12/11/2024	Illicit Discharge	405	7.77	WSDOT	Turbid Water		Yes	Resolved
12/12/2024	Discharge/Traffic Spill	503	13.7	WSP	Diesel	Cleaned	No	Resolved
12/12/2024	Discharge/Traffic Spill	395	18	WSP	Peroxide		No	Resolved
12/12/2024	Discharge/Traffic Spill	90	31	WSDOT	Diesel	Cleaned	No	Resolved
12/12/2024	Discharge/Traffic Spill	503	8.1	Citizen	Oil	Cleaned	Yes	Resolved
12/12/2024	Illicit Discharge	5	174.7	Contractor	Turbid Water	Cleaned	Yes	Resolved
12/13/2024	Discharge/Traffic Spill	5	109	WSP	Fuel		No	Resolved
12/13/2024	Illicit Discharge	167	23.5	Contractor	Turbid Water	Cleaned	Yes	Resolved
12/14/2024	Illicit Discharge			Tacoma Environmental	Wash water	Cleaned	Yes	Resolved
12/16/2024	Discharge/Traffic Spill	5	36.75	WSP	Diesel	Cleaned	No	Resolved
12/16/2024	Illicit Discharge	167	23.65	WSDOT	Concrete	Cleaned	Yes	Resolved
12/17/2024	Discharge/Traffic Spill	14	134	WSP	Fuel	Cleaned	Yes	Resolved
12/17/2024	Discharge/Traffic Spill	2	172	WSDOT	Fuel		Yes	Resolved
12/17/2024	Illicit Discharge	405	7.6	Contractor	Turbid Water		Yes	Resolved
12/17/2024	Illicit Discharge	405	10.2	WSDOT	Turbid Water		Yes	Resolved
12/18/2024	Discharge/Traffic Spill	395	16.16	WSP	Sewage	Cleaned	No	Resolved

## Detailed IDDE Issues Table

Date	Type of Discharge	State Route	Milepost	Discovery	Pollutant	Action Taken	G3 Notification to Ecology	Status
12/18/2024	Discharge/Traffic Spill	5	166	WSP	Oil	Cleaned	No	Resolved
12/18/2024	Illicit Discharge	405	5.4	Contractor	Turbid Water		Yes	Resolved
12/18/2024	Illicit Discharge	405	7	Contractor	Turbid Water		Yes	Resolved
12/18/2024	Illicit Discharge	405	18.1	City of Kirkland	Turbid Water		Yes	Resolved
12/19/2024	Illicit Discharge	516	2.1	Contractor	Turbid Water		No	Resolved
12/19/2024	Illicit Discharge	405	7.55	WSDOT	Turbid Water		Yes	Resolved
12/19/2024	Illicit Discharge	169	18.1	King County	Wastewater	Cleaned	Yes	Resolved
12/20/2024	Discharge/Traffic Spill	3	0.17	WSP	Oil	Cleaned	No	Resolved
12/20/2024	Discharge/Traffic Spill	101	349	WSP	Vehicle Fluids	Cleaned	No	Resolved
12/20/2024	Illicit Discharge	290	16.9	Citizen	Wastewater		No	Resolved
12/20/2024	Illicit Discharge	14	147	BNSF	Locomotive oil	Cleaned	No	Resolved
12/22/2024	Discharge/Traffic Spill	9	16.48	WSP	Diesel	Cleaned	No	Resolved
12/24/2024	Discharge/Traffic Spill	90	8.7	WSP	Fire fighting foam		No	Resolved
12/24/2024	Discharge/Traffic Spill	16	12	Gig Harbor Public Works	Hydraulic Oil	Cleaned	No	Resolved
12/24/2024	Discharge/Traffic Spill	5	104.32	WSP	Oil	Cleaned	No	Resolved
12/25/2024	Discharge/Traffic Spill	5	133.86	WSP	Oil	Cleaned	No	Resolved
12/26/2024	Discharge/Traffic Spill	5	78	WSP	Fuel	Cleaned	No	Resolved
12/27/2024	Discharge/Traffic Spill	99	26.85	IRT	Oil	Cleaned	No	Resolved
12/27/2024	Illicit Discharge	405	7.55	Contractor	Turbid Water	Cleaned	Yes	Resolved
12/27/2024	Illicit Discharge	405	23.6	Contractor	Turbid Water		Yes	Resolved
12/27/2024	Illicit Discharge	5	147.45	Contractor	Turbid Water		Yes	Resolved
12/28/2024	Illicit Discharge	405	23.6	Contractor	Turbid Water		Yes	Resolved
12/28/2024	Illicit Discharge	5	147.5	Contractor	Turbid Water		Yes	Resolved
12/30/2024	Discharge/Traffic Spill	18	20.34	WSP	Diesel		No	Resolved

## Detailed IDDE Issues Table

Date	Type of Discharge	State Route	Milepost	Discovery	Pollutant	Action Taken	G3 Notification to Ecology	Status
12/31/2024	Discharge/Traffic Spill	18	11.2	WSDOT	Fuel	Cleaned	No	Resolved
12/31/2024	Discharge/Traffic Spill	90	46	WSP	Fuel	Cleaned	Yes	Resolved
1/2/2025	Discharge/Traffic Spill	5	59	WSP	Fuel	Cleaned	Yes	Resolved
1/2/2025	Illicit Connection	9	3.34	WSDOT	Iron Bacteria		Yes	Resolved
1/3/2025	Discharge/Traffic Spill	405	19.87	WSP	Oil	Cleaned	No	Resolved
1/3/2025	Discharge/Traffic Spill	24	32	WSP	Diesel	Cleaned	No	Resolved
1/3/2025	Discharge/Traffic Spill	90	113.5	WSP	Diesel		No	Resolved
1/3/2025	Illicit Discharge	520	1.2	Contractor	Turbid Water		Yes	Resolved
1/3/2025	Illicit Discharge	520	1.2	Contractor	Turbid Water		Yes	Resolved
1/3/2025	Illicit Discharge	405	8.38	Contractor	Turbid Water	Cleaned	Yes	Resolved
1/3/2025	Illicit Discharge	405	23.6	WSDOT	Turbid Water		Yes	Resolved
1/3/2025	Illicit Discharge	405	23.6	Contractor	Turbid Water		Yes	Resolved
1/3/2025	Illicit Discharge	405	23.6	Contractor	Turbid Water		Yes	Resolved
1/4/2025	Discharge/Traffic Spill	90	62	Tow Company	Diesel		No	Resolved
1/4/2025	Discharge/Traffic Spill	5	242	Citizen	Vehicle Fluids		No	Resolved
1/8/2025	Discharge/Traffic Spill	503	44.1	Citizen	Diesel		No	Resolved
1/8/2025	Illicit Discharge	405	23.6	WSDOT	Turbid Water		Yes	Resolved
1/9/2025	Discharge/Traffic Spill	101	164.6	WSP	Diesel	Cleaned	No	Resolved
1/10/2025	Illicit Discharge	506	8	Lewis County	Fire fighting foam		Yes	Resolved
1/13/2025	Illicit Discharge	169	20	Maple Valley Wastewater	Leachate	Cleaned	No	Resolved
1/14/2025	Illicit Discharge	405	23.6	Contractor	Turbid Water		Yes	Resolved
1/15/2025	Discharge/Traffic Spill	5	257	TMS	Oil	Cleaned	No	Resolved
1/16/2025	Discharge/Traffic Spill	3	37.31	WSP	Fuel	Cleaned	No	Resolved

## Detailed IDDE Issues Table

Date	Type of Discharge	State Route	Milepost	Discovery	Pollutant	Action Taken	G3 Notification to Ecology	Status
1/17/2025	Discharge/Traffic Spill	90	5.08	TMS	Diesel	Cleaned	No	Resolved
1/17/2025	Discharge/Traffic Spill	90	4.31	WSP	Fuel		Yes	Resolved
1/21/2025	Discharge/Traffic Spill	5	177.75	Citizen	Fuel	Cleaned	No	Resolved
1/23/2025	Discharge/Traffic Spill	527	5.5	WSP	Oil	Cleaned	No	Resolved
1/23/2025	Discharge/Traffic Spill	906	3	WSP	Diesel	Cleaned	Yes	Resolved
1/24/2025	Discharge/Traffic Spill	20	48.4	Skagit County	Gasoline	Cleaned	Yes	Resolved
1/24/2025	Illicit Discharge	16	12.6	City of Gig Harbor	Sewage	Cleaned	Yes	Resolved
1/25/2025	Discharge/Traffic Spill	2	1	WSDOT	Oil	Cleaned	No	Resolved
1/28/2025	Discharge/Traffic Spill	82	30	Yakima Fire Dept	Diesel	Cleaned	No	Resolved
1/29/2025	Illicit Discharge	405	23.6	Contractor	Turbid Water		Yes	Resolved
1/31/2025	Discharge/Traffic Spill	12	34.8	TMS	Fuel	Cleaned	No	Resolved
1/31/2025	Discharge/Traffic Spill	5	99.6	Citizen	Oil		No	Resolved
1/31/2025	Discharge/Traffic Spill	5	104.02	Ecology	Oil	Cleaned	No	Resolved
1/31/2025	Discharge/Traffic Spill	395	216	WSP	Diesel	Cleaned	Yes	Resolved
2/3/2025	Discharge/Traffic Spill	523	1.48	WSP	Fire fighting foam		Yes	Resolved
2/5/2025	Discharge/Traffic Spill	5	127.48	WSP	Vehicle Fluids	Cleaned	No	Resolved
2/5/2025	Discharge/Traffic Spill	90	259	WSP	Hydraulic Oil		No	Resolved
2/5/2025	Discharge/Traffic Spill	14	4.5	WSP	Vehicle Fluids	Cleaned	Yes	Resolved
2/6/2025	Discharge/Traffic Spill	509	0	WSP	Oil	Cleaned	No	Resolved
2/7/2025	Discharge/Traffic Spill	90	61.3	WSDOT	Diesel	Cleaned	No	Resolved
2/8/2025	Discharge/Traffic Spill	90	43	WSP	Fuel		No	Resolved
2/9/2025	Discharge/Traffic Spill	5	165.13	WSP	Vehicle Fluids		Yes	Resolved
2/10/2025	Discharge/Traffic Spill	90	61	WSP	Diesel		No	Resolved
2/12/2025	Illicit Discharge	405	23.6	Contractor	Turbid Water		Yes	Resolved

## Detailed IDDE Issues Table

Date	Type of Discharge	State Route	Milepost	Discovery	Pollutant	Action Taken	G3 Notification to Ecology	Status
2/13/2025	Discharge/Traffic Spill	5	60	WSP	Diesel	Cleaned	No	Resolved
2/13/2025	Discharge/Traffic Spill	97	33	WSP	Diesel			Resolved
2/16/2025	Discharge/Traffic Spill	5	169.63	Tow Company	Oil	Cleaned	No	Resolved
2/18/2025	Discharge/Traffic Spill	167	25.62	TMS	Oil	Cleaned	No	Resolved
2/19/2025	Discharge/Traffic Spill	90	132	WSP	Jet Fuel	Cleaned	No	Resolved
2/19/2025	Illicit Discharge	28	19.4	Citizen	Chemicals		No	Resolved
2/19/2025	Illicit Discharge	405	23.57	Contractor	Turbid Water		Yes	Resolved
2/20/2025	Discharge/Traffic Spill	167	9.64	WSDOT	Diesel	Cleaned	No	Resolved
2/20/2025	Discharge/Traffic Spill	7	48.33	WSP	Diesel	Cleaned	No	Resolved
2/20/2025	Discharge/Traffic Spill	530	62	WSP	Oil	Cleaned	No	Resolved
2/22/2025	Discharge/Traffic Spill	5	193.57	WSP	Vehicle Fluids	Cleaned	No	Resolved
2/24/2025	Discharge/Traffic Spill	523	1.61	Recology	Monoammonium Phosphate	Cleaned	No	Resolved
2/24/2025	Discharge/Traffic Spill	410	19.65	WSDOT	Coolant	Cleaned	Yes	Resolved
2/24/2025	Illicit Discharge	101	57.83	WSDOT	Turbid Water		Yes	Resolved
2/25/2025	Discharge/Traffic Spill	9	24	WSP	Diesel	Cleaned	Yes	Resolved
2/25/2025	Illicit Discharge	405	8	Contractor	Turbid Water	Cleaned	Yes	Resolved
2/25/2025	Illicit Discharge	90	10.5	Contractor	Turbid Water	Cleaned	Yes	Resolved
2/26/2025	Discharge/Traffic Spill	141	5.5	WSDOT	Vehicle Fluids	Cleaned	No	Resolved
2/26/2025	Discharge/Traffic Spill	2	12.8	WSP	Bleach	Cleaned	No	Resolved
2/27/2025	Discharge/Traffic Spill	5	120.06	WSP	Diesel	Cleaned	No	Resolved
2/28/2025	Illicit Discharge	509	22.3	City of SeaTac	Turbid Water		Yes	Resolved
3/1/2025	Discharge/Traffic Spill	2	119	WSDOT	Oil	Cleaned	No	Resolved
3/5/2025	Discharge/Traffic Spill	5	132.39	WSDOT	Hydraulic Oil	Cleaned	No	Resolved

## Detailed IDDE Issues Table

Date	Type of Discharge	State Route	Milepost	Discovery	Pollutant	Action Taken	G3 Notification to Ecology	Status
3/6/2025	Discharge/Traffic Spill	101	79	WSP	Diesel		No	Resolved
3/10/2025	Discharge/Traffic Spill	90	5.79	TMS	Oil	Cleaned	No	Resolved
3/10/2025	Discharge/Traffic Spill	90	130	WSP	None		No	Resolved
3/10/2025	Discharge/Traffic Spill	520	7	Bellevue Fire	Chemicals	Cleaned	Yes	Resolved
3/11/2025	Discharge/Traffic Spill	3	10.76	WSP	Transmission fluid	Cleaned	No	Resolved
3/12/2025	Discharge/Traffic Spill	167	8.8	WSP	Sewage	Cleaned	Yes	Resolved
3/12/2025	Illicit Discharge	516	2.1	Contractor	Turbid Water	Cleaned	No	Resolved
3/12/2025	Illicit Discharge	516	2.2	Contractor	Turbid Water		Yes	Resolved
3/13/2025	Illicit Discharge	405	11.9	Contractor	Turbid Water		Yes	Resolved
3/13/2025	Illicit Discharge	18	25.7	Contractor	Turbid Water		Yes	Resolved
3/13/2025	Illicit Discharge	5	147.5	Contractor	Turbid Water		Yes	Resolved
3/13/2025	Illicit Discharge	5	147.7	Contractor	Turbid Water		Yes	Resolved
3/15/2025	Discharge/Traffic Spill	5	2.5	WSP	Oil	Cleaned	Yes	Resolved
3/17/2025	Discharge/Traffic Spill	6	22	WSDOT	Diesel		Yes	Resolved
3/19/2025	Illicit Discharge	529	4	WSP	Grease	Cleaned	No	Resolved
3/20/2025	Discharge/Traffic Spill	509	0.71	WSP	Coolant		No	Resolved
3/20/2025	Illicit Discharge	5	114.29	WSP	Garbage	Cleaned	No	Resolved
3/20/2025	Illicit Discharge	5	5.17	Clark County	Diesel	Cleaned	Yes	Resolved
3/21/2025	Discharge/Traffic Spill	9	85	Citizen	Oil	Cleaned	No	Resolved
3/21/2025	Illicit Discharge	18	26	WSDOT	Turbid Water		Yes	Resolved
3/23/2025	Discharge/Traffic Spill	5	114.29	WSP	Oil	Cleaned	No	Resolved
3/23/2025	Discharge/Traffic Spill	5	189.25	Snohomish County Fire	Vehicle Fluids		Yes	Resolved
3/23/2025	Illicit Discharge	405	23.6	Contractor	Chromium		Yes	Resolved
3/24/2025	Discharge/Traffic Spill	5	47	WSP	Oil	Cleaned	No	Resolved

## Detailed IDDE Issues Table

Date	Type of Discharge	State Route	Milepost	Discovery	Pollutant	Action Taken	G3 Notification to Ecology	Status
3/24/2025	Illicit Discharge	405	7.1	Contractor	Turbid Water	Cleaned	Yes	Resolved
3/25/2025	Discharge/Traffic Spill	16	14.86	WSP	Diesel		No	Resolved
3/25/2025	Discharge/Traffic Spill	14	100.6	WSDOT	Oil	Cleaned	No	Resolved
3/26/2025	Illicit Discharge	522	11	Contractor	High pH water		Yes	Resolved
3/28/2025	Discharge/Traffic Spill	900	7.8	WSP	Oil	Cleaned	Yes	Resolved
3/28/2025	Discharge/Traffic Spill	405	23.7	Contractor	High pH water		Yes	Resolved
3/31/2025	Discharge/Traffic Spill	2	5	WSDOT	Oil	Cleaned	No	Resolved
3/31/2025	Discharge/Traffic Spill	5	131.8	TMS	Diesel	Cleaned	No	Resolved
3/31/2025	Discharge/Traffic Spill	90	286.2	WSP	Diesel	Cleaned	No	Resolved
3/31/2025	Illicit Discharge	405	12.1	Contractor	Turbid Water	Cleaned	Yes	Resolved
4/1/2025	Discharge/Traffic Spill	97	170.8	WSP	Diesel	Cleaned	Yes	Resolved
4/1/2025	Illicit Discharge	82	36.8	Citizen	Garbage	Cleaned	No	Resolved
4/2/2025	Discharge/Traffic Spill	8	7.51	WSP	Paint	Cleaned	No	Resolved
4/2/2025	Illicit Discharge	405	12.55	Contractor	Turbid Water		Yes	Resolved
4/3/2025	Discharge/Traffic Spill	12	138	WSP	Diesel		No	Resolved
4/4/2025	Discharge/Traffic Spill	5	128	WSP	Fuel		No	Resolved
4/4/2025	Discharge/Traffic Spill	5	228	TMS	Oil	Cleaned	No	Resolved
4/4/2025	Illicit Discharge	405	18.1	Contractor	Turbid Water		Yes	Resolved
4/5/2025	Discharge/Traffic Spill	82	28	WSP	Diesel	Cleaned	No	Resolved
4/7/2025	Discharge/Traffic Spill	167	15	Auburn Fire	Composite Resin	Cleaned	No	Resolved
4/7/2025	Discharge/Traffic Spill	5	260	WSP	Vehicle Fluids	Cleaned	No	Resolved
4/7/2025	Illicit Discharge	99	31	Contractor	None		No	Resolved
4/7/2025	Illicit Discharge	7	52.13	Pierce County	Sewage	Cleaned	Yes	Resolved
4/8/2025	Illicit Discharge	405	3.65	Contractor	Turbid Water		Yes	Resolved

## Detailed IDDE Issues Table

Date	Type of Discharge	State Route	Milepost	Discovery	Pollutant	Action Taken	G3 Notification to Ecology	Status
4/8/2025	Illicit Discharge	405	5.4	Contractor	Turbid Water		Yes	Resolved
4/8/2025	Illicit Discharge	405	8.73	Contractor	Turbid Water		Yes	Resolved
4/8/2025	Illicit Discharge	18	27.81	Contractor	Turbid Water	Cleaned	Yes	Resolved
4/9/2025	Discharge/Traffic Spill	503	1.6	Aspen Pest Control	Pesticide	Cleaned	No	Resolved
4/9/2025	Illicit Discharge	405	7.2	Contractor	Turbid Water	Cleaned	Yes	Resolved
4/10/2025	Discharge/Traffic Spill	411	3.1	WSP	Oil	Cleaned	No	Resolved
4/10/2025	Discharge/Traffic Spill	3	54.76	WSP	Oil	Cleaned	No	Resolved
4/10/2025	Illicit Discharge	405	23.65	WSDOT	Turbid Water		Yes	Resolved
4/12/2025	Discharge/Traffic Spill	5	18.21	WSDOT	Gasoline		No	Resolved
4/12/2025	Discharge/Traffic Spill	2	21	WSP	Oil	Cleaned	No	Resolved
4/12/2025	Discharge/Traffic Spill	90	32	WSP	Vehicle Fluids	Cleaned	No	Resolved
4/14/2025	Discharge/Traffic Spill	105	13	WSP	Fuel	Cleaned	No	Resolved
4/14/2025	Discharge/Traffic Spill	12	16	TMS	Fuel	Cleaned	No	Resolved
4/15/2025	Discharge/Traffic Spill	302	0	WSP	Oil	Cleaned	No	Resolved
4/15/2025	Discharge/Traffic Spill	90	110.5	WSP	Vehicle Fluids	Cleaned	No	Resolved
4/15/2025	Discharge/Traffic Spill	90	286.63	WSDOT	Diesel	Cleaned	No	Resolved
4/17/2025	Discharge/Traffic Spill	405	10.1	WSP	Diesel		No	Resolved
4/17/2025	Discharge/Traffic Spill	99	29	WSDOT	Coolant		No	Resolved
4/17/2025	Discharge/Traffic Spill	5	45.8	WSP	Diesel	Cleaned	No	Resolved
4/18/2025	Discharge/Traffic Spill	90	26	WSP	Diesel	Cleaned	Yes	Resolved
4/20/2025	Discharge/Traffic Spill	539	6	WSP	Oil	Cleaned	No	Resolved
4/21/2025	Discharge/Traffic Spill	24	11	WSP	Vehicle Fluids	Cleaned	No	Resolved
4/21/2025	Discharge/Traffic Spill	90	29	WSP	Diesel	Cleaned	Yes	Resolved

## Detailed IDDE Issues Table

Date	Type of Discharge	State Route	Milepost	Discovery	Pollutant	Action Taken	G3 Notification to Ecology	Status
4/21/2025	Discharge/Traffic Spill	5	254.8	WSP	Diesel	Cleaned	Yes	Resolved
4/21/2025	Illicit Discharge	17	51	City of Mose Lake	Paint	Cleaned	No	Resolved
4/22/2025	Discharge/Traffic Spill	167	7.56	WSP	Fuel		No	Resolved
4/22/2025	Discharge/Traffic Spill	90	74	WSDOT	Diesel	Cleaned	No	Resolved
4/22/2025	Discharge/Traffic Spill	14	169	WSP	Diesel	Cleaned	No	Resolved
4/23/2025	Discharge/Traffic Spill	90	62	WSP	None	Cleaned	No	Resolved
4/24/2025	Illicit Discharge	405	7.85	Contractor	Sewage		Yes	Resolved
4/25/2025	Discharge/Traffic Spill	240	38	WSP	Cooking Oil	Cleaned	No	Resolved
4/26/2025	Discharge/Traffic Spill	12	48.88	WSP	Oil		No	Resolved
4/29/2025	Discharge/Traffic Spill	97	19	WSP	Diesel	Cleaned	Yes	Resolved
4/29/2025	Discharge/Traffic Spill	5	128.92	WSDOT	Vehicle Fluids	Cleaned	Yes	Resolved
4/29/2025	Illicit Discharge	522	11.05	Contractor	Turbid Water	Cleaned	Yes	Resolved
4/30/2025	Discharge/Traffic Spill	182	3	WSP	Unknown	Cleaned	No	Resolved
4/30/2025	Discharge/Traffic Spill	90	281.11	WSP	Hydraulic Oil	Cleaned	No	Resolved
5/1/2025	Discharge/Traffic Spill	512	0	WSP	Oil	Cleaned	No	Resolved
5/1/2025	Discharge/Traffic Spill	90	69.75	Citizen	Oil		No	Resolved
5/1/2025	Discharge/Traffic Spill	101	93.27	WSP	Oil	Cleaned	No	Resolved
5/3/2025	Discharge/Traffic Spill	202	7.7	City of Redmond	White Gypsum	Cleaned	No	Resolved
5/6/2025	Discharge/Traffic Spill	9	84.8	WSP	Oil	Cleaned	No	Resolved
5/6/2025	Discharge/Traffic Spill	5	197	TMS	Diesel	Cleaned	No	Resolved
5/7/2025	Illicit Discharge	109	20.9	WSDOT	Vehicle Fluids		No	Resolved
5/8/2025	Discharge/Traffic Spill	20	46	WSP	Oil	Cleaned	No	Resolved
5/12/2025	Discharge/Traffic Spill	90	298.4	WSP	Hydraulic Oil	Cleaned	No	Resolved
5/12/2025	Discharge/Traffic Spill	90	3.31	WSP	Fire fighting foam	Cleaned	Yes	Resolved

## Detailed IDDE Issues Table

Date	Type of Discharge	State Route	Milepost	Discovery	Pollutant	Action Taken	G3 Notification to Ecology	Status
5/15/2025	Discharge/Traffic Spill	512	10.16	WSP	Liquid Asphalt	Cleaned	No	Resolved
5/15/2025	Discharge/Traffic Spill	5	54	WSP	Fuel	Cleaned	No	Resolved
5/16/2025	Discharge/Traffic Spill	167	17	Ecology	Oil	Cleaned	No	Resolved
5/17/2025	Discharge/Traffic Spill	20	59.54	WSP	Oil	Cleaned	No	Resolved
5/17/2025	Discharge/Traffic Spill	405	12	WSP	Diesel	Cleaned	Yes	Resolved
5/17/2025	Discharge/Traffic Spill	405	13.55	WSP	Diesel	Cleaned	Yes	Resolved
5/18/2025	Discharge/Traffic Spill	5	136.09	WSP	Oil	Cleaned	No	Resolved
5/19/2025	Discharge/Traffic Spill	97	0.1	WSP	Diesel	Cleaned	No	Resolved
5/19/2025	Discharge/Traffic Spill	19	8.8	WSP	Oil	Cleaned	No	Resolved
5/19/2025	Illicit Connection	405	18.1	Contractor	Unknown		Yes	Resolved
5/19/2025	Illicit Discharge	405	7.5	Contractor	Turbid Water	Cleaned	Yes	Resolved
5/19/2025	Illicit Discharge	405	9.4	Contractor	Turbid Water		Yes	Resolved
5/19/2025	Illicit Discharge	520	10.75	Contractor	Turbid Water		Yes	Resolved
5/21/2025	Discharge/Traffic Spill	405	13.8	WSP	Vehicle Fluids	Cleaned	No	Resolved
5/21/2025	Discharge/Traffic Spill	405	14.2	Citizen	Fuel	Cleaned	No	Resolved
5/22/2025	Discharge/Traffic Spill	167	6.2	WSP	Diesel	Cleaned	No	Resolved
5/22/2025	Discharge/Traffic Spill	167	6.2	WSP	Diesel	Cleaned	No	Resolved
5/26/2025	Discharge/Traffic Spill	18	2.86	WSP	Diesel		No	Resolved
5/27/2025	Discharge/Traffic Spill	405	23.93	WSP	Diesel	Cleaned	No	Resolved
5/27/2025	Discharge/Traffic Spill	5	44.1	WSP	Oil	Cleaned	No	Resolved
5/28/2025	Discharge/Traffic Spill	509	26.9	Recology	Coolant		No	Resolved
5/29/2025	Illicit Discharge	405	4.9	Contractor	Turbid Water	Cleaned	Yes	Resolved
5/29/2025	Illicit Discharge	82	132.5	Citizen	Insulation	Cleaned	Yes	Resolved

## Detailed IDDE Issues Table

Date	Type of Discharge	State Route	Milepost	Discovery	Pollutant	Action Taken	G3 Notification to Ecology	Status
6/1/2025	Discharge/Traffic Spill	8	13.41	WSP	Fuel		No	Resolved
6/1/2025	Discharge/Traffic Spill	112	23.12	WSP	Vehicle Fluids	Cleaned	No	Resolved
6/2/2025	Discharge/Traffic Spill	599	0	Recology	Coolant	Cleaned	No	Resolved
6/2/2025	Discharge/Traffic Spill	14	22	WSP	Fuel	Cleaned	No	Resolved
6/2/2025	Discharge/Traffic Spill	5	114.29	WSP	Oil	Cleaned	Yes	Resolved
6/2/2025	Illicit Discharge	501	5.25	WSDFW	Oil	Cleaned	No	Resolved
6/5/2025	Discharge/Traffic Spill	5	104.32	WSP	Fuel	Cleaned	No	Resolved
6/8/2025	Discharge/Traffic Spill	90	7.03	WSP	Vehicle Fluids		No	Resolved
6/10/2025	Discharge/Traffic Spill	90	78	WSP	Diesel	Cleaned	No	Resolved
6/10/2025	Discharge/Traffic Spill	5	248	WSDOT	Coolant	Cleaned	No	Resolved
6/12/2025	Discharge/Traffic Spill	97	73	WSP	Fuel	Cleaned	No	Resolved
6/14/2025	Discharge/Traffic Spill	20	88.21	Skagit County	Fuel	Cleaned	No	Resolved
6/14/2025	Discharge/Traffic Spill	5	189	WSP	Diesel	Cleaned	No	Resolved
6/17/2025	Discharge/Traffic Spill	21	100	WSP	Transmission fluid		No	Resolved
6/18/2025	Discharge/Traffic Spill	522	9.18	WSDOT	Diesel	Cleaned	No	Resolved
6/19/2025	Discharge/Traffic Spill	512	9	Contractor	Oil	Cleaned	No	Resolved
6/20/2025	Discharge/Traffic Spill	2	14.9	City of Monroe	Oil	Cleaned	No	Resolved
6/20/2025	Illicit Discharge	5	145.75	Contractor	Turbid Water	Cleaned	Yes	Resolved
6/21/2025	Discharge/Traffic Spill	5	104.3	WSP	Diesel	Cleaned	Yes	Resolved
6/21/2025	Illicit Discharge	18	26.17	Contractor	Turbid Water		Yes	Resolved
6/23/2025	Discharge/Traffic Spill	90	89	WSP	Mineral Oil	Cleaned	No	Resolved
6/24/2025	Illicit Discharge	405	18.1	WSDOT	Turbid Water		Yes	Resolved
6/24/2025	Illicit Discharge	395	266.8	Citizen	Turbid Water		Yes	Resolved

# Detailed IDDE Issues Table

Date	Type of Discharge	State Route	Milepost	Discovery	Pollutant	Action Taken	G3 Notification to Ecology	Status
6/26/2025	Discharge/Traffic Spill	395	14	WSP	Oil	Cleaned	No	Resolved
6/26/2025	Discharge/Traffic Spill	3	26.86	WSP	Oil	Cleaned	No	Resolved
6/26/2025	Illicit Discharge	523	0.9	Citizen	Water		No	Resolved
6/26/2025	Illicit Discharge	101	218.4	Citizen	Unknown	Cleaned	No	Resolved
6/27/2025	Discharge/Traffic Spill	101	314.48	WSP	Transmission fluid	Cleaned	No	Resolved
6/30/2025	Discharge/Traffic Spill	167	9.63	WSP	Diesel	Cleaned	No	Resolved
6/30/2025	Discharge/Traffic Spill	9	96	WSP	Oil	Cleaned	No	Resolved
6/30/2025	Illicit Discharge	5	40	Citizen	Sewage		Yes	Resolved

