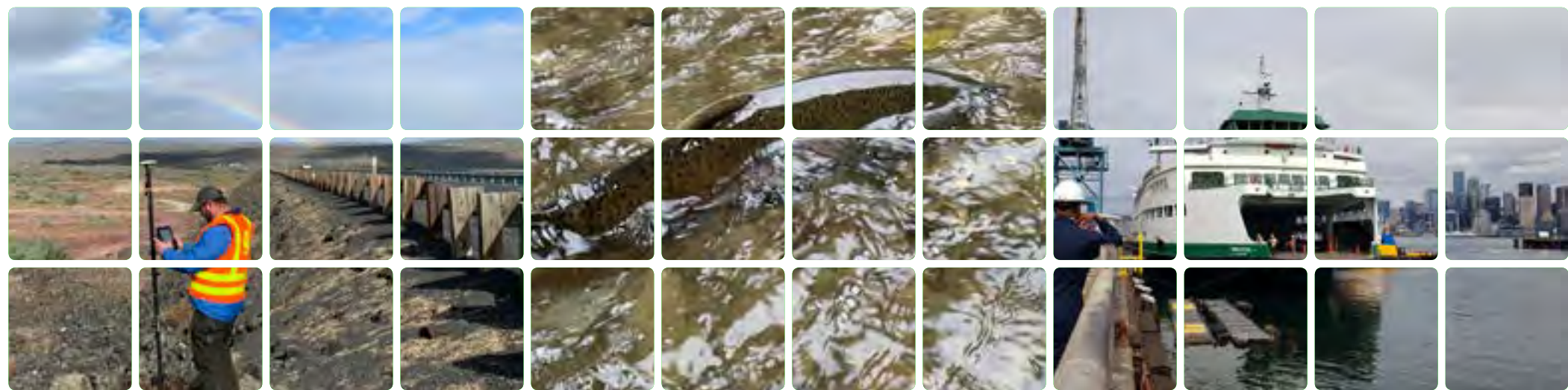


2024 STORMWATER REPORT

NPDES Municipal Stormwater Permit Annual Report for Fiscal Year 2024



Title VI, ADA

Title VI Notice to Public

It is the Washington State Department of Transportation's (WSDOT) policy to assure that no person shall, on the grounds of race, color, national origin or sex, as provided by Title VI of the Civil Rights Act of 1964, be excluded from participation in, be denied the benefits of, or be otherwise discriminated against under any of its federally funded programs and activities. Any person who believes his/her Title VI protection has been violated, may file a complaint with WSDOT's Office of Equal Opportunity (OEO). For additional information regarding Title VI complaint procedures and/or information regarding our non-discrimination obligations, please contact OEO's Title VI Coordinator at (360) 705-7082.

Americans with Disabilities Act (ADA) Information

This material can be made available in an alternate format by emailing the WSDOT Diversity/ADA Affairs team at wsdotada@wsdot.wa.gov or by calling toll free, 855-362-4ADA (4232). Persons who are deaf or hard of hearing may make a request by calling the Washington Relay at 711.



Contents

Title VI, ADA	i
Table of Contents	ii
List of Figures	iv
List of Tables	v
List of Acronyms	vi
Certification	vii
Chapter 1 - Stormwater Program Management	1
Stormwater Management.	1
Water Quality Regulations	1
Areas Covered by the Permit	1
How to Use This Report	3
Permit Implementation Costs	3
Triggered Reporting Items	3
Chapter 2 - Total Maximum Daily Loads	6
Total Maximum Daily Loads in the Permit	6
Implementing TMDL Requirements	6
Chapter 3 - Construction Site Stormwater Pollution Prevention	9
Temporary Erosion and Sediment Control	9
Fall Assessments	9

Table of Contents

Chapter 4 - Stormwater Infrastructure	12
Planning and Designing New Facilities	12
Retrofits	13
Stormwater System Mapping	15
Illicit Discharge Detection and Elimination	16
Chapter 5 - Maintenance and Operations	18
Road and Facility Maintenance and Operations	18
Treatment and Flow Control BMP Maintenance	18
Catch Basin Maintenance	19
Ferry Terminal Maintenance and Operations	19
Chapter 6 - Stormwater Monitoring	21
Stormwater Monitoring and Effectiveness Studies	21
Chapter 7 - Education and Public Involvement	23
Education and Public Involvement	23
Environmental Justice	24
Internet Site	25
Knowledge and Technology Transfer	26
Appendix 1	28
Appendix 2	39
Appendix 3	41

List of Figures

Figure 1	WSDOT facilities within Phase I and II Municipal Stormwater Permit areas	2
Figure 2	WSDOT works with Ecology to identify priority locations for remedying erosion problems associated with farming activity in some eastern Washington watersheds	6
Figure 3	WSDOT facilities within TMDLs included in the permit.	7
Figure 4	WSDOT employees attend a field BMP training as part of CESCL certification	9
Figure 5	A bioswale near Salmon Creek is reconstructed by Southwest Region Area 1 crews. Region Area 1 crew reconstruct a bioswale in need of maintenance.	19
Figure 6	Adopt-a-Highway volunteers from Olympic Region Area 2 near Port Orchard help with stormwater clean up by removing litter and other harmful items from local highways	23

List of Tables

List of Tables

Table 1	Acres of Existing Impervious Surface Retrofitted or Reverted to Pervious	14
Table 2	Permanent BMPs Requiring Additional Funding to Correct and Corrections Made.	18
Table 3	TMDL Implementation Summary Table	28
Table 4	Stormwater BMPs Built Statewide During the 2024 Reporting Period	39
Table 5	Summary of IDDE Issues and Remediation Activities	41

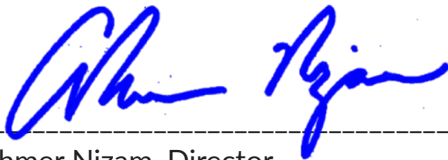
List of Acronyms

BMP	Best Management Practice	NPDES	National Pollutant Discharge Elimination System
CAB	Compost Amended Bioswale	PCB	Polychlorinated Biphenyl
CESCL	Certified Erosion and Sediment Control Lead	QAPP	Quality Assurance Project Plan
CSWGP	Construction Stormwater General Permit	RCW	Revised Code of Washington
CTR	Commute Trip Reduction	SWMPP	Stormwater Management Program Plan
EPA	Environmental Protection Agency	SWPPP	Stormwater Pollution Prevention Plan
GIS	Geographic Information Systems	TAPE	Technology Assessment Protocol - Ecology
GPS	Global Positioning System	TER	Technical Evaluation Report
HEAL	Healthy Environmental For All	TESC	Temporary Erosion and Sediment Control
HRM	Highway Runoff Manual	TMDL	Total Maximum Daily Load
IDDE	Illicit Discharge Detection and Elimination	VFS	Vegetated Filter Strip
MS4	Municipal Separate Storm Sewer System	WSDOT	Washington State Department of Transportation
NGO	Non-Governmental Organization	WSF	Washington State Ferries

Certification

Certification and Signature for Washington State Department of Transportation's National Pollutant Discharge Elimination System Municipal Stormwater Permit 2024 Stormwater Report

I certify under penalty of law, that this document and all attachments were prepared under my direction or supervision in accordance with a system designed to assure that qualified personnel properly gathered and evaluated the information submitted. Based on my inquiry of the person or persons who manage the system or those persons directly responsible for gathering information, the information submitted is, to the best of my knowledge and belief, true, accurate, and complete. I am aware that there are significant penalties for submitting false information, including the possibility of fine and imprisonment for willful violations.



Ahmer Nizam, Director

Environmental Services Office

Washington State Department of Transportation

STORMWATER MANAGEMENT

Historically, WSDOT managed stormwater to maintain safe driving conditions and preserve the condition of the roadway. WSDOT focused on getting the stormwater off the roadway as fast as possible. While safety and preservation continue to be top priorities for WSDOT, today the agency also manages stormwater from state transportation facilities to fulfill its environmental stewardship goals as well as regulatory obligations. WSDOT uses stormwater operational and structural best management practices (BMPs) to minimize pollution and control stormwater runoff flows from its roadways.

WATER QUALITY REGULATIONS

Clean Water Act

The Federal Water Pollution Control Act, also known as the Clean Water Act, aims to restore and maintain the chemical, physical, and biological integrity of the Nation's waters. It addresses effects from stormwater discharges through the National Pollutant Discharge Elimination System (NPDES) program. Under this program, the Environmental Protection Agency (EPA) issues permits regulating stormwater discharges to receiving water bodies. In Washington State, the EPA delegated permitting authority of the NPDES program to the Department of Ecology (Ecology).

WSDOT's NPDES Municipal Stormwater Permit

WSDOT's NPDES and State Waste Discharge Permit for Municipal Stormwater (permit) is tailored to the linear

nature and unique constraints of the transportation system. Compliance with this permit constitutes compliance with the Clean Water Act and the State of Washington Water Pollution Control Act (Chapter 90.48 RCW).

AREAS COVERED BY THE PERMIT

Phase I and II Permit Areas

WSDOT's permit covers stormwater discharges from stormwater conveyance systems (municipal separate storm sewer systems, or MS4s) owned or operated by WSDOT in areas covered by the Phase I and II permits. Discharges covered include those from highways, ferry terminals, rest areas, park and ride lots, maintenance facilities, vector decant and street sweeping facilities, and winter chemical storage facilities. All permit requirements are implemented in these areas. A map of permit-covered facilities within Phase I and II permit areas appears on page 2.

Total Maximum Daily Load Areas

WSDOT's permit also covers stormwater discharges to any receiving water body in Washington State for which there is an EPA-approved Total Maximum Daily Load (TMDL) with wasteload allocations and implementation documents specifying actions for WSDOT. Compliance with the specific action items prescribed in Appendix 3 of the permit constitutes compliance with TMDL wasteload allocations. A map of permit-covered facilities within TMDL areas is located in Chapter 2.

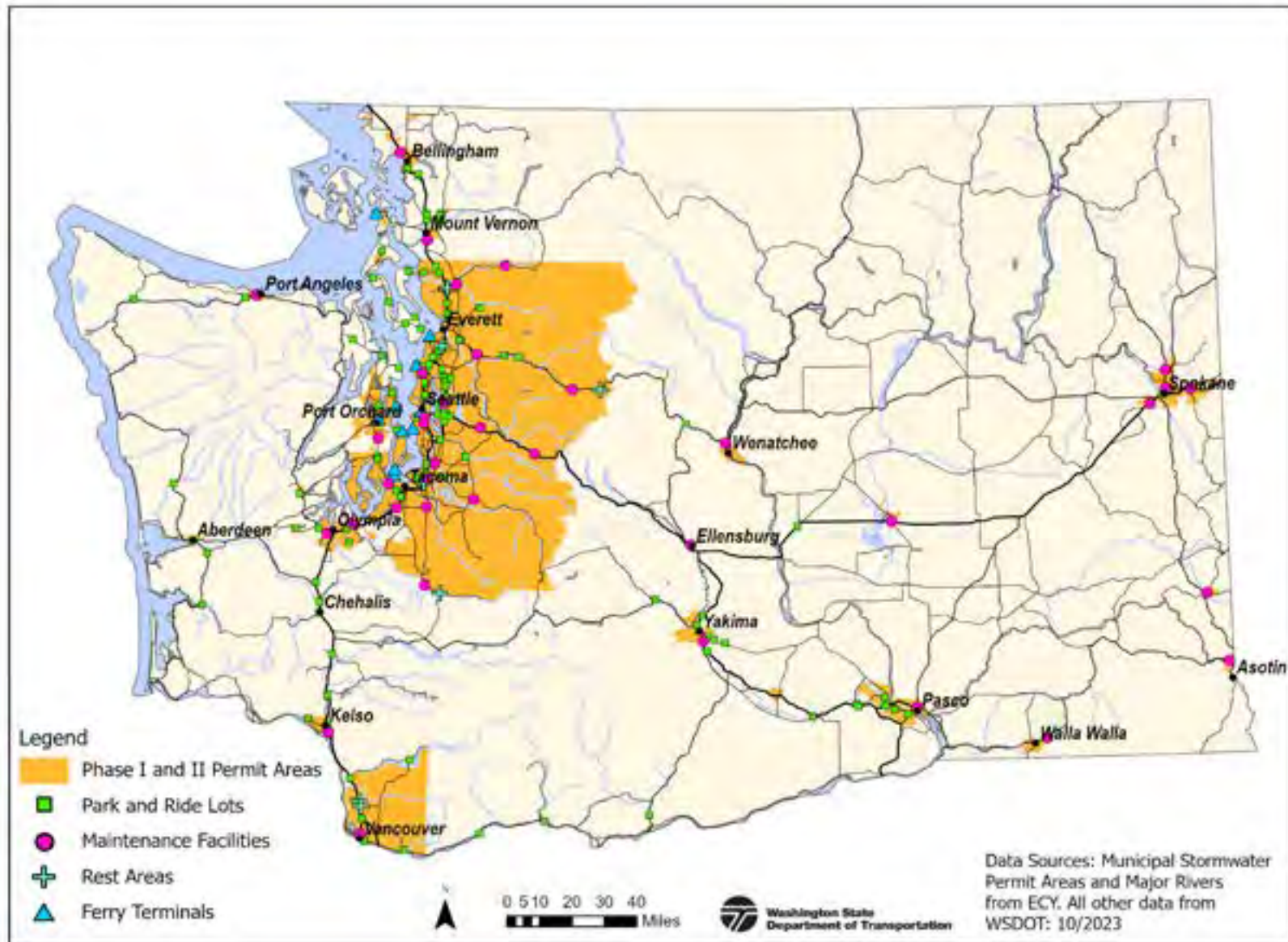


Figure 1. WSDOT facilities within Phase I and II Municipal Stormwater Permit areas.

Stormwater Program Management

HOW TO USE THIS REPORT

Compliance and Information Document

This Stormwater Report serves as WSDOT's permit-required annual report. It provides a status update on permit compliance and implementation from July 1, 2023 to June 30, 2024, the reporting period. WSDOT submits separate reports to fulfill its reporting requirements related to stormwater monitoring.

WSDOT uses the Stormwater Report to help assess the appropriateness and effectiveness of various programs and activities described in its Stormwater Management Program Plan (SWMPP).

PERMIT IMPLEMENTATION COSTS

Funding Requests for Permit Implementation

The permit requires WSDOT to request adequate resources to maintain compliance with the permit in its agency-request budget submittal to the Governor's Office. Once the budget request is received by the Office of Financial Management within the Governor's Office, the Governor submits a transportation budget to the Legislature recommending funding levels and allocations. Any amount requested supplements ongoing permit implementation funds from the previous biennium. WSDOT did not need to request additional resources during this biennium.

Permit Implementation Costs

The permit requires WSDOT to track the cost of implementing the permit and provide this information to Ecology upon request.

TRIGGERED REPORTING ITEMS

Notification of Spills

According to General Condition G3 in the permit, if WSDOT knows of a spill into its MS4 which could constitute a threat to human health, welfare, or the environment, WSDOT must notify Ecology. In this reporting period, Ecology was notified of 43 G3 spills as summarized in Appendix 3 of this report.

Compliance with Permit Obligations

The permit requires WSDOT to notify Ecology if it fails to comply with an obligation in the permit. Under General Condition G20 of the permit, this notification must include a description of the non-compliance and the time period for which it is expected to continue. A G20 notification must also include actions taken or planned to reduce, eliminate, and prevent reoccurrence of the non-compliance. WSDOT did not need to submit any such notifications to Ecology during this reporting period.

Notification of Upsets

The permit requires WSDOT to include a summary in this report of any G21 notifications to Ecology regarding upsets. An upset is an exceptional incident in which there is unintentional and temporary noncompliance due to factors beyond the reasonable control of WSDOT. WSDOT did not need to submit any such notifications to Ecology during this reporting period.

WSDOT's Stormwater Management Program Plan

The permit requires WSDOT to implement a Stormwater Management Program comprised of the program components and requirements listed in permit section S5. WSDOT's SWMPP fulfills that obligation and documents the procedures and practices used to reduce the discharge of pollutants from storm sewer systems owned or operated by WSDOT. The SWMPP is updated annually and submitted with the Stormwater Report. It is available for review and comment anytime throughout the reporting period at <https://wsdot.wa.gov/construction-planning/protecting-environment/managing-stormwater-state-highways>. Feedback is reviewed and incorporated as appropriate during the annual update process.

Standards for Discharges

The permit requires WSDOT to include a summary in this report of any actions taken regarding Special Condition S4 of the permit. These actions include notifying Ecology about any discharge from WSDOT's MS4 that causes or contributes to a known or likely violation of water quality standards in a receiving water body. WSDOT did not need to submit any such notifications to Ecology during this reporting period.



TOTAL MAXIMUM DAILY LOADS IN THE PERMIT

TMDL implementation plans provide water quality targets and assign action items to permittees in watersheds to clean up polluted waters so that the water bodies meet state water quality standards. The permit requires WSDOT to comply with the action items and associated timelines listed in Appendix 3 of the permit. The permit currently includes 31 TMDLs statewide as seen in Figure 3.

IMPLEMENTING TMDL REQUIREMENTS

Actions Required by TMDLs

The permit requires WSDOT to summarize the status of compliance with each of the TMDL-related action items in the permit. Table 3 in Appendix 1 of this report provides this information. In addition to the actions listed in the summary table, WSDOT implemented the *Highway Runoff Manual (HRM)* in all of the TMDL areas as required by the permit.

WSDOT's Involvement in TMDL Development

As encouraged in the permit, WSDOT participates in Ecology's TMDL development process. During this reporting period, WSDOT participated in the development process for the following TMDLs (with the pollutants of concern noted in parentheses).

- Soos Creek (fine sediment)
- Spokane River (polychlorinated biphenyls)

WSDOT also participated in the development process or implementation of the following impairment-related working groups:

- Our Green-Duwamish Partnership
- Puget Sound Nutrient Forum
- Spokane River Toxics Advisory Board
- Poverty Bay Shellfish Protection District Technical Committee
- Lake Campbell Cyanobacteria Management Plan



Figure 2. WSDOT works with Ecology to identify priority locations for remedying erosion problems associated with farming activity in some eastern Washington watersheds. Chronic erosion from farming activity is an ongoing maintenance and water quality challenge, as seen at this location on SR 27 within the Hangman TMDL.

Total Maximum Daily Loads

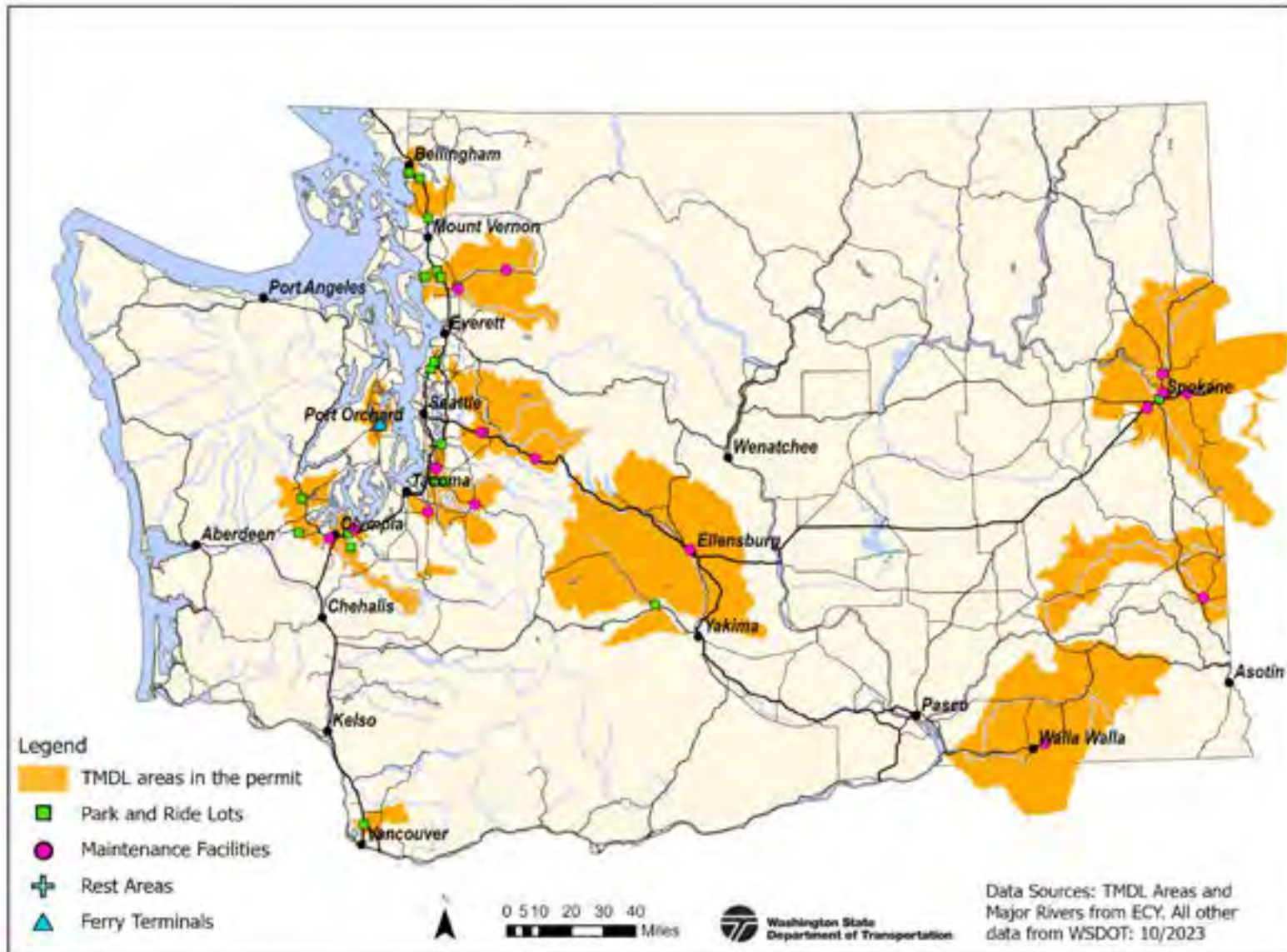


Figure 3. WSDOT facilities within TMDLs included in the permit.

TEMPORARY EROSION AND SEDIMENT CONTROL

Certification and Training

Construction projects use temporary erosion and sediment control (TESC) plans, which consist of a narrative and site plan sheets, to identify project-specific risks related to erosion and strategies for managing those risks. TESC plans must be kept on site and updated to reflect site conditions and BMP adaptive management.

WSDOT staff and consultants responsible for designing TESC plans and inspecting construction sites must take WSDOT's Construction Site Erosion and Sediment Control training class. Taking the class either renews current Certified Erosion and Sediment Control Lead (CESCL) certification or fulfills the eight-hour in-class component for new or expired certifications. A CESCL certification is required for anyone performing weekly site inspections required by the NPDES Construction Stormwater General Permit (CSWGP). WSDOT's class covers topics including the regulatory framework for construction activities, CSWGP compliance, spill prevention techniques, erosion and sediment control BMPs, and the TESC planning process. During this reporting period, WSDOT held four Construction Site Erosion and Sediment Control trainings and 185 people received the training.



Figure 4. WSDOT employees attend a field BMP training as part of CESCL certification.

FALL ASSESSMENTS

Between September and November each year, WSDOT assesses all active construction projects identified as having a moderate to high risk of erosion as defined in WSDOT's *TESC Manual*. Projects are identified based on the amount of disturbed soil, slope length and gradient, soil type, and proximity to receiving water bodies. If the fall assessment reveals TESC plan or BMP deficiencies, WSDOT's Erosion Control Lead follows up with the project offices to provide recommendations and technical assistance to improve site conditions prior to the wet season. In fall 2023, WSDOT assessed 24 construction projects statewide.

Summary and Lessons Learned from Fall Assessments

WSDOT evaluates construction projects using the 13 planning elements identified in the CSWGP. The evaluation allows WSDOT to identify performance trends and challenges. Out of the 13 planning elements, projects performed the best in the following areas:

- Mark clearing limits
- Control dewatering
- Protect low impact development
- Protect drain inlets
- Control flow rates
- Install sediment controls

During the 2023 fall assessments, the following challenges were identified:

- Proper BMP and material selection, installation, adaptive management, and maintenance.
- Contract enforcement, particularly when contract language, Standard Specifications, etc. is more stringent than permit language.
- Increased number of high risk projects to manage along with contractors and newer staff who may still be gaining TESC-related experience or learning how to manage WSDOT-specific risks and challenges.

The observations made during the 2023 fall assessments were analyzed in conjunction with past findings, emerging issues communicated by WSDOT regions and modes, and information shared by region staff during statewide Construction Site Erosion & Sediment Control trainings. The intent of this approach was to help identify underlying factors that may

contribute to both the challenges identified in 2023 along with performance trends seen over the course of recent years.

While it was noted in the previous reporting period that WSDOT's Environmental Services and State Construction Offices would take steps toward embracing a more holistic proactive approach to TESC design and implementation across the agency, we still observed reactive implementation practices during this reporting period and are planning to implement new change management strategies to strengthen a culture of proactive compliance. Some of the things WSDOT did during this reporting period to improve and address the challenges and trends identified included:

- Began analyzing data collected through WSDOT's Environmental Compliance Assurance Process and Commitment Tracking System on non-compliance events related to TESC outside of the fall assessment time period to help identify training and support needs more comprehensively.
- Engaged with Ecology to discuss challenges and clarify expectations related to permit implementation and compliance.
- Improved and enhanced construction stormwater and NPDES 402-related training, including identifying funding to expand Field BMP training access to construction and environmental staff.
- Updated and improved existing guidance documents, policies, and practices to close loopholes and clarify ambiguous language.
- Began offering a monthly statewide construction stormwater/TESC "Office Hour" where staff can share emerging issues, lessons-learned, ask questions, and learn about special "spotlight" topics relevant to construction stormwater compliance.



PLANNING AND DESIGNING NEW FACILITIES

When WSDOT constructs or modifies transportation facilities, it incorporates stormwater management BMPs to minimize adverse effects of stormwater runoff on receiving water bodies. WSDOT uses its HRM and *Hydraulics Manual* to provide consistent design and planning procedures statewide and meet the level of stormwater management established by Ecology's stormwater management manuals.

Stormwater BMPs

The permit requires WSDOT to report the number and type of stormwater BMPs built annually. A table summarizing the number and types of BMPs built statewide appears in Appendix 2 of this report.



Highway Runoff Manual Training

The permit requires WSDOT to report the number of HRM training opportunities and the number of staff trained. WSDOT trains staff and consultants who design stormwater management BMPs to help ensure they understand and use the design procedures in the HRM. In this reporting period WSDOT offered two instructor-led virtual workshops, training 86 WSDOT staff, 33 local agency staff, and 51 consultant staff.

Tracking New Stormwater Outfalls, Discharge Points, and BMPs

The permit requires WSDOT to enter key features and locations of newly constructed stormwater treatment and flow control facilities into a database. WSDOT currently reviews as-constructed contract plans (as-built plan sheets) and uses Geographic Information Systems (GIS) to manually map and document stormwater infrastructure in the Stormwater Features Inventory Database. WSDOT continues to research automation options to import the information directly into the Stormwater Features Inventory Database.

Additionally, for stormwater treatment and/or flow control BMPs, WSDOT has implemented a web application to tie existing project tracking and management information to individual BMPs. The application tracks each facility's lifecycle through design, construction, and completion. This is a requirement for WSDOT projects and will become a useful reporting and tracking tool for treatment of highway runoff on WSDOT right-of-way.

RETROFITS

Prioritizing Retrofits

Most of WSDOT's highways and facilities were built before the federal Clean Water Act and the Washington Water Pollution Control Act resulting in legacy stormwater impacts inherited with today's transportation system. With much of WSDOT's existing infrastructure lacking facilities to control stormwater flow or treat stormwater runoff, and with our current understanding of the importance of addressing pollution, the agency looks for opportunities to maximize our investment in rectifying legacy impacts by adding stormwater treatment through stormwater retrofits, both voluntarily to fulfill environmental stewardship goals and as required by the permit.

Throughout this reporting period, WSDOT has been updating its procedures and tools for its stormwater retrofit program to address legislative goals for stormwater retrofits established in the Move Ahead Washington funding package including salmon recovery and ecosystem health, reducing pollution, addressing health disparities, and cost effectiveness, with an emphasis on green infrastructure retrofit solutions. The updates also include agency goals around the Healthy Environment for All (HEAL) Act and tribal treaty rights.

Development of the updated Stormwater Retrofit Prioritization resulted in a publicly available [web map](#) that produces one-mile segments of WSDOT's mainline highway system, displaying potential high value stormwater retrofit candidate locations. This high-level screening tool is used by WSDOT staff to make planning decisions about which locations to recommend for scoping stand-alone stormwater retrofit projects, positioning

WSDOT to be able to scope, design, and construct stormwater retrofits as funds are released by the Legislature.

Tracking Retrofits

The permit requires highway projects in the Puget Sound basin to meet more stringent project-triggered retrofit requirements than other regions of the state. For projects in the Puget Sound basin meeting the project-triggered retrofit requirement, for which retrofitting all existing impervious surfaces is deemed infeasible, the permit requires WSDOT to report the cost information used to make that determination. This cost equates to the amount of money WSDOT must spend on retrofits within the project limits or transfer to fund stand-alone stormwater retrofit projects (or a combination of both). No new projects fit this requirement during the reporting period.

WSDOT is required to report the number of stand-alone retrofits constructed. During this reporting period, one stand-alone retrofit was constructed. WSDOT is also required to report the number of acres of existing impervious surface retrofitted or reverted to pervious surface through retrofits, as well as where and how much retrofitting took place. This information appears in Table 1.

Table 1. Acres of Existing Impervious Surface Retrofitted or Reverted to Pervious

State Route	Region	Project Name	Existing Impervious Surface Retrofitted or Reverted to Pervious (acres)	Reason for Retrofit ¹
026	Eastern	SR 26/Dusty to Colfax - Add Climbing Lanes	2.780	Opportunity-based
405	Northwest	I-405/NE 132nd Street Bridges - Seismic Retrofit	3.293	Project-driven
520	Northwest	SR 520/148th Ave NE Interchange - Ramp Paving	3.500	Project-driven and Opportunity-based
203	Northwest	SR 203/High Rock Road and SR 203 St. SE - Interchange Improvement	0.280	Project-driven and Opportunity-based
101	Olympic	US 101/Leland Creek and Unnamed Tribs - Remove Fish Barriers	0.142	Opportunity-based
305	Olympic	SR 305/Murden Creek - Remove Fish Barrier	0.085	Opportunity-based
003	Olympic	SR 3, Chico Creek and Chico Way Bridge Vicinity Remove Fish Barrier	0.456	Project-driven
502/503	Southwest	SR 502/SR 503 - Interchange Improvement	0.634	Project-driven and Opportunity-based
014/141/142	Southwest	SR 14 et al/West Skamania and Klickitat Counties - Stormwater Retrofits	0.505	Standalone

1. Project-driven retrofits occur when a highway project exceeds the thresholds that trigger specific stormwater management requirements as defined in the HRM.

Opportunity-based retrofits occur when new improvement or preservation projects elect to add retrofits of existing pervious surfaces following guidelines in the HRM.

Standalone stormwater retrofits occur when projects are initiated to address stormwater treatment and/or flow control at a prioritized location defined by WSDOT's stormwater needs prioritization process.

STORMWATER SYSTEM MAPPING

Complete System Mapping

WSDOT is required to map the MS4 for 79.5 centerline miles of highway each year. During this reporting period, WSDOT mapped 92.21 centerline miles of highway.

Mapping Methods

To map the stormwater system, WSDOT uses office and field-based methods. In the office, WSDOT continues to research and map the information on as-built plan sheets. WSDOT staff use GIS to place the as-built plan sheet images where they belong on a map, then create points, lines, and polygons to represent stormwater infrastructure such as discharge points and outfalls, pipes, drainage inlets, BMPs, and ditches.

In the field, WSDOT crews use Global Positioning System (GPS) units to locate and document stormwater conveyance infrastructure and attributes. In areas where no, or minimal, infrastructure information exists, WSDOT locates and maps the infrastructure and documents all attribute information. In areas where a base level of information exists from in-office mapping efforts, field crews locate and update or confirm the information based on field observations.

Drainage Area Mapping

WSDOT uses a combination of hydraulic design and field collected data to map drainage areas to the discharge points

of our stormwater systems. A priority is focused on mapping drainage areas associated with stormwater treatment and/or flow control BMPs, and to surface receiving waters. Designed drainage areas are digitized into GIS from WSDOT project hydraulic files where available. As initial verification of the designed drainage areas, and collection of additional drainage areas, high resolution aerial imagery and elevation data are used to estimate drainage breaks between stormwater conveyance systems defined through our ongoing MS4 mapping program. Once available, WSDOT will use Mobile LiDAR data to incorporate this highly accurate elevation data into GIS to help automate the drainage area mapping process and obtain more accurate results through processing geometric stormwater networks and elevation models.

GIS Layer Updates

The permit requires WSDOT to report on the GIS data layers that were updated over the reporting period, which are:

- Drainage Areas
- Artificial discharge points
- Artificial path
- Debris racks
- Discharge points
- Drainage inlets
- Energy dissipaters
- Flow restrictors
- Pipe ends
- Pipes
- Ditches
- Roadside slopes
- Concrete barriers

- Curbs
- Stormwater ponds
- Stormwater vaults

ILLICIT DISCHARGE DETECTION AND ELIMINATION

Illicit Discharge Detection and Elimination Program

WSDOT's Illicit Discharge Detection and Elimination (IDDE) Program identifies and resolves illicit discharges and illegal connections that could adversely affect our stormwater system or property. WSDOT contacts emergency responders when coming upon a potentially hazardous or unknown pollutant.

As required by the permit, WSDOT's IDDE Program trains staff who, as part of their normal job responsibilities, may encounter or observe an illicit discharge or illegal connection to WSDOT's municipal separate storm sewer system or property, to recognize and report illicit discharges and potential illegal connections. During this reporting period, 27 WSDOT staff completed training through the eLearning IDDE program.

New Reported Illicit Discharges and Illegal Connections

WSDOT tracks all issues statewide and seeks remediation when necessary. WSDOT discovered 103 illicit discharges and 10 illegal connections during this reporting period, all of which were resolved. WSDOT also tracked 252 traffic related spills that were addressed on WSDOT highways. Forty-three of these

spills required G3 notification to Ecology. Appendix 3 contains a table describing the discharges and connections, actions taken to eliminate them, and the status of the issues. All items included in Appendix 3 are uploaded to Ecology's Water Quality Web Portal as required by the permit.



ROAD AND FACILITY MAINTENANCE AND OPERATIONS

Facility Stormwater Pollution Prevention Plans

WSDOT implements stormwater pollution prevention plans (SWPPPs) at each of the maintenance facilities covered by the permit. The SWPPPs identify operational and structural BMPs and include spill prevention and response plans specific to each facility. The permit requires WSDOT to perform site inspections twice a year to ensure SWPPP implementation and to evaluate the effectiveness of the plans. In this reporting period, WSDOT conducted 65 of 66, or 99% of planned SWPPP site inspections for 33 facilities statewide.

Training

WSDOT held 8 training courses on stormwater-related maintenance activities during this reporting period. In all, 294 maintenance staff were trained on topics including:

- Stormwater Pollution Prevention Plans
- Overview of the Endangered Species Act Regional Road Maintenance Program
- Understanding when and how to use BMPs
- Stormwater BMP maintenance
- Compliance monitoring and reporting requirements
- BMPs for emergency and road maintenance activities
- Field exercises installing erosion control BMPs
- Spill response

TREATMENT AND FLOW CONTROL BMP MAINTENANCE

WSDOT completed 3,071 permanent stormwater BMP inspections in this reporting period. This represents 99 percent of planned BMP inspections and exceeds the 95 percent permit requirement. WSDOT is also required to correct stormwater BMP maintenance deficiencies within one year of identification for BMPs requiring typical maintenance and within two years of identification for BMPs requiring non-typical maintenance costing less than \$25,000 unless there are circumstances beyond WSDOT’s control. WSDOT corrected 100 percent of typical and non-typical maintenance deficiencies identified through triggering records and inspections for BMPs.

The permit requires WSDOT to prioritize BMPs that need non-typical repairs costing more than \$25,000 and BMPs originally built without access roads. Prioritization is based on the amount of time needed to complete repairs, cost, and available funding. Table 2 lists the number of BMPs that need non-typical repairs and documents corrections made during this reporting period.

Table 2. Permanent BMPs Requiring Additional Funding to Correct and Corrections Made.

Region	BMPs Requiring Repairs > \$25,000	BMPs Requiring Access Road	BMPs Corrected This Reporting Period (removed from count in first two columns)
Northwest	5		
Olympic	6	4	
Southwest	4		1

CATCH BASIN MAINTENANCE

WSDOT inspected 32,673 catch basins. This represents 99 percent of planned inspections and exceeds the 95 percent permit requirement. The permit also requires WSDOT to correct 95 percent of deficiencies noted during inspections within six months of identification and 98 percent within a year unless there are circumstances beyond WSDOT's control. During this reporting period, WSDOT corrected 97 percent of catch basin deficiencies within six months and 98 percent of deficiencies within one year.



Figure 5. A bioswale near Salmon Creek is reconstructed by Southwest Region Area 1 crews.

FERRY TERMINAL MAINTENANCE AND OPERATIONS

Terminal Stormwater Pollution Prevention Plans

Similar to maintenance facility SWPPPs, Washington State Ferries (WSF) implements a SWPPP at each ferry terminal. WSF uses most of the BMPs identified in the SWPPP as standard procedures, regardless of whether a terminal is covered by the permit. Each terminal keeps a copy of the SWPPP on site and maintains a formal inspection log. To ensure the SWPPP is implemented properly, the permit requires WSF to inspect terminal sites with SWPPPs twice a year. During this reporting period, WSF completed 100 percent of planned inspections, exceeding the 95 percent permit requirement.

Training

WSF uses a programmatic staff training approach, allowing them to meet the operational demands of nearly 450 scheduled daily sailings and staff schedules. As an example of the programmatic training approach, when a stormwater issue is noted during the monthly stormwater inspections, a corrective action is documented in the inspection log and discussed with the terminal supervisor. The inspector or the supervisor then informally trains terminal staff to resolve and prevent the issue.

In addition to the programmatic training approach, 156 employees assigned to work at WSF terminals received stormwater training. Ten terminal supervisors received stormwater training during this reporting period.

STORMWATER MONITORING AND EFFECTIVENESS STUDIES

WSDOT has two annual reports for NPDES studies that cover permit related highways and facilities monitoring activities over water year 2023 (October 1, 2022-September 30, 2023). The reports are submitted to Ecology by October 31st each year and made available here:

<https://wsdot.wa.gov/construction-planning/protecting-environment/managing-stormwater-state-highways>.

New Highway BMP Effectiveness Studies

WSDOT planned and constructed two sites for the new highway BMP study that test the effectiveness of existing swales that are older than their expected life spans. As of the end of this reporting period, WSDOT has collected water quality samples and hydrology data at both sites. WSDOT is currently conducting statistical analysis of collected data to confirm that the statistical goals of sampling protocols have been met before starting on the final study report.

New BMP Effectiveness Studies at Maintenance Facilities

WSDOT constructed the two new compost amended bioswale (CAB) BMP effectiveness study sites in maintenance facilities in Tumwater and Spokane. As of the end of this reporting period, WSDOT has collected water quality samples and hydrology data at the Tumwater facility. WSDOT is working on adaptive

management strategies at the Spokane site in order to obtain scientifically credible data. Sampling will commence in Spokane this water year.

EDUCATION AND PUBLIC INVOLVEMENT

In addition to being a permit requirement, WSDOT considers education and public involvement good practice. WSDOT encourages continuous and meaningful public involvement through public meetings regarding project-specific environmental review documentation and alternatives for managing stormwater. WSDOT also encourages the public to comment on its Roadside Vegetation Management and Stormwater Management Program plans. Further, WSDOT's Adopt-a-Highway and Commute Trip Reduction programs help educate and involve the public in pollutant source reduction.

Adopt-a-Highway

WSDOT's Adopt-a-Highway program gives organizations, groups, and businesses the opportunity to help keep stormwater clean by picking up the litter along highways. WSDOT collects and disposes of most of the bags filled by volunteer groups. During this reporting period, 860 volunteer groups reported 9,264 hours and picked up 32,722 bags of litter.

41,224 Bags of litter collected along Washington highways.

Businesses that sponsor sections of highway hire contractors to pick up and dispose of litter. During this reporting period, contractors hired by 263 sponsor groups picked up 8,502 bags of litter.



Figure 6. Adopt-a-Highway volunteers from Olympic Region Area 2 near Port Orchard help with stormwater clean up by removing litter and other harmful items from local highways.

Commute Trip Reduction

WSDOT works with local governments and employers at over 1,000 worksites to implement Commute Trip Reduction (CTR) techniques. These include subsidies for public transit fares and carpooling, flexible work schedules, and telework opportunities. With WSDOT's technical support and help from the online tools available at rideshareonline.com, between 2007 and 2022, employees reduced their vehicle miles traveled by over 40%. In addition, commuters saved nearly \$200 million in fuel expenses. Removing vehicles from the roadways and reducing emissions that enter the atmosphere improves water quality by decreasing the amount of pollutants deposited on the roadway and entering stormwater systems.

CTR data is collected on a two-year calendar cycle. Compared to the 2007-08 cycle, during the 2021-23 cycle:

- Participating commuters reduced their rate of driving alone to work by almost 72 percent.
- The cars left at home by CTR-affected employees every weekday represent about one lane of bumper-to-bumper traffic stretching 125 miles (equivalent to the distance from Bellingham to Tacoma).
- These avoided vehicle trips saved over 50 million gallons of fuel and reduced annual greenhouse gas emissions by 450,000 metric tons.
- CTR participation reduced tire wear and the amount of the tire rubber-derived chemical 6PPD-quinone introduced to Washington roadways. 6PPD-quinone is acutely toxic to a variety of aquatic species and responsible for the urban runoff mortality syndrome impacting coho salmon.

The COVID-19 pandemic disrupted CTR surveying during the 2021-23 survey cycle, which ran from July 1, 2021 to June 30, 2023. Efforts are underway to help sustain the increase in telework attributable to the large numbers of employees working remotely during the pandemic. However, there is still an expectation that the CTR results will not maintain the gains shown during this cycle as telework rates continue to attenuate across the country.

ENVIRONMENTAL JUSTICE

The HEAL Act (Chapter 70A.02 RCW) outlines how state agencies should consider community needs and environmental justice in their work. The goals of this state environmental justice law align with legislative direction under Move Ahead Washington for WSDOT to implement its stormwater retrofit program in a way that addresses health disparities across the state. Consistent with the HEAL Act, WSDOT's goal is that at least 40% of stormwater retrofit improvement investments across the state will be directed to eliminate or reduce health disparities for vulnerable populations and overburdened communities, as well as consideration of tribal treaty rights. WSDOT's prioritization web map utilizes the following tools to ensure that this element of prioritization is meaningfully incorporated into the stormwater retrofit program:

- Department of Health's Environmental Health Disparities Map.
- WSDOT tribal areas data – includes publicly available tribal lands data in addition to self-identified areas communicated by tribes to WSDOT's Tribal Liaison.
- WSDOT's Survey123 data garnered through outreach efforts - WSDOT elevates tribal provided recommendations from the Survey123 for stormwater retrofit locations as top priorities for scoping.

The prioritization web map was created with input from federal, state, and local governments, tribes, non-governmental organizations (NGOs), scientists, and other interested parties. Feedback has been incorporated into the planning tool reflecting best available science, diverse perspectives,

Education and Public Involvement

interest, and experience, and expert recommendations from the broad community involved in and interested in stormwater management particularly as it relates to species and habitat restoration, preservation, and recovery.

Included in the prioritization web map is a data set created through WSDOT outreach efforts via a Survey123, available at <https://ftp.wsdot.wa.gov/public/StormwaterRetrofitMoveAheadWashington/Survey123FlierForLocalTribalPriorities.pdf>, which solicits top priority locations from tribes, local agencies, and other interested parties. The survey invites partners to inform WSDOT of their top four priority locations based on elements such as their own watershed planning, species and habitat recovery goals, cultural priorities, environmental justice planning, and science and data insights. In the first year the survey was open, from May 2023 through July 2024, 122 locations were provided by 48 entities, including 11 tribes, with partnership interest indicated at 96% of the locations. WSDOT will use this valuable information to inform development of a ranked needs list for scoping stormwater retrofit projects.

WSDOT recognizes that statewide data has its limits in completely addressing environmental justice goals. The Survey123 offers a genuine effort to bridge that gap and invite participation from tribes and others to communicate their priorities. WSDOT is open to suggestions on additional ways to evaluate environmental justice considerations for stormwater retrofit prioritization and planning.

When funding for standalone stormwater retrofits is released by the Legislature, the agency will be able to scope, design, and construct standalone stormwater retrofit projects across the

state that go above and beyond permit required stormwater management and achieve agency values of engagement, innovation, and stewardship. Ongoing maintenance is required for these environmental assets to function and perform as intended. Maintenance funding also needs to be considered.

INTERNET SITE

WSDOT shares stormwater-related information with the public on its website. During this reporting period, WSDOT redesigned its website to focus on public user needs and to better organize content. Updated information about the agency's stormwater permit program, municipal stormwater reports, and other activities can be found at <https://wsdot.wa.gov/construction-planning/protecting-environment/managing-stormwater-state-highways>. Documents posted on this webpage include the Stormwater Report, Stormwater Monitoring Reports, and Stormwater Management Program Plan.

No new stormwater research was added to the research library during the reporting period. WSDOT continued researching the "Characterization of First Flush Phenomenon and Total Storm Event Pollutant Distribution" during the reporting period. Additional WSDOT research is available at <https://wsdot.wa.gov/about/library-research-reports/research-reports>.

KNOWLEDGE AND TECHNOLOGY TRANSFER

WSDOT maintains communication and coordinates with local, state, and national programs to share resources, promote and conduct stormwater research, and stay up to date on stormwater research developments and innovations. In addition to sharing information and knowledge with others, WSDOT greatly benefits from the information shared during events and from participating in advisory groups, committees, and partnerships, including:

- Permit coordination and implementation:
 - Phase I Permit Coordinators
 - Phase II NPDES Permit Coordinators
 - Central Sound Phase II Group
 - South Sound Phase II Group
 - Municipal Environmental Justice Workgroup
 - Washington Stormwater Center Environmental Justice Salon
 - Stormwater Technical Advisory Committee
 - Regional Operations and Maintenance Program
 - Street Maintenance Solids Meetings
 - Stormwater Technology Testing Center
- State and Regional Committees and Advisory Groups:
 - American Public Works Association Stormwater Managers Committee
 - Stormwater Technical Resource Center Advisory Committee
 - Ecology's Technology Assessment Protocol (TAPE) Stakeholder Advisory Group
 - American Society of Civil Engineers Water Resources Committee
- Clarks Creek Advisory Group
- Stormwater Work Group State Agency Caucus
- Interagency Project Team
- WA State Interagency 6PPD Forum
- Puget Sound Stormwater and Transportation Charter Group
- 6PPD-q west coast DOTs/DEPs MS4s
- 6PPD Action Plan Advisory Committee
- Stormwater Work Group 6PPD Subgroup Meeting
- Lower Duwamish Waterway Source Control Work Group
- Our Green Duwamish
- National Committees and Advisory Groups:
 - American Association of State Highway and Transportation Officials
 - Committee on Environment and Sustainability
 - Stormwater Subcommittee
 - Transportation Research Board annual meetings
 - Transportation Research Board Committees on Hydrology and Hydraulics, Stormwater and Landscape and Environmental Design
 - National Cooperative Highway Research Program
 - Interstate Technology and Regulatory Council Tire Anti-Degradants (6PPD) Team
 - TransNow



Table 3. TMDL Implementation Summary Table

TMDL Name	WSDOT's Required Actions	Implementation Deadlines	Status of Compliance
Deschutes River, Percival Creek, and Budd Inlet Tributaries TMDL (Temperature, Fecal Coliform, Dissolved Oxygen, pH, Fine Sediment)	With NPDES Phase II areas WSDOT will implement permit obligations that address the TMDL-listed pollutants and participate in adaptive management as needed.	On-going	No adaptive management was needed.
Hangman Creek TMDL (Fecal Coliform, Temperature, TSS/Turbidity)	Prepare addendum to the initial inventory findings report. Include updates on potential TMDL concerns, and follow-up actions taken and/or notification to others where a concern has been identified but occurred outside WSDOT's right-of-way and control.	Submit 6 months after initial inventory findings report	Summary of Inventory Findings Reports were submitted to Ecology on 2/8/13 and 2/28/14 (summarizing findings from 2012 and 2013 field work, respectively). An Addendum was submitted to Ecology on 8/29/14.
	If stormwater discharges that transport bacteria over natural background levels to listed receiving waters are found from sources within WSDOT's right-of-way and control, WSDOT will apply BMPs from their SWMPP or perform remediation to correct bacteria discharges. For run-on sources of bacteria identified by WSDOT that are from outside of WSDOT's right-of-way, WSDOT will notify Ecology and work cooperatively with Ecology, the local jurisdiction, and other parties involved for their resolution.	As needed	No new sources identified.
	To address TSS/turbidity associated with adjacent erosion (run-on) including delivery that results from farming activities, WSDOT will work cooperatively with Ecology, the local jurisdiction, and other parties involved to prevent sediment from entering area waterways. At a minimum, WSDOT will: 1.) spend one day annually performing a highway evaluation with Ecology regional staff to document up to 15 erosion problem sites, 2.) Collaborate with Ecology on developing a map of problem sites, 3.) Refer up to three priority sites annually to Ecology for follow-up, 4.) Adaptively manage with Ecology as needed.	On-going	WSDOT and Ecology staff completed the annual highway evaluation to identify erosion problem sites in April 2024. Ecology added the problem sites to their non-point source mapping tool. WSDOT referred three priority erosion problem sites to Ecology on 6/23/24.

TMDL Implementation Summary Table

TMDL Name	WSDOT's Required Actions	Implementation Deadlines	Status of Compliance
Issaquah Creek Basin TMDL (Fecal Coliform)	If stormwater discharges that transport bacteria over natural background levels to listed receiving waters are found from sources within WSDOT's right-of-way and control, WSDOT will apply BMPs from their SWMPP or perform remediation to correct bacteria discharges. For run-on sources of bacteria identified by WSDOT that are from outside of WSDOT's right-of-way, WSDOT will notify Ecology and work cooperatively with Ecology, the local jurisdiction, and other parties involved for their resolution.	As needed	Issaquah Creek TMDL Summary of Inventory Findings Report was submitted to Ecology on 3/28/12 and Addendum on 9/28/12. No new sources identified.
Little Bear Creek TMDL (Fecal Coliform)	If stormwater discharges that transport bacteria over natural background levels to listed receiving waters are found from sources within WSDOT's right-of-way and control, WSDOT will apply BMPs from their SWMPP or perform remediation to correct bacteria discharges. For run-on sources of bacteria identified by WSDOT that are from outside of WSDOT's right-of-way, WSDOT will notify Ecology and work cooperatively with Ecology, the local jurisdiction, and other parties involved for their resolution.	As needed	Little Bear Creek TMDL Summary of Inventory Findings Report was submitted to Ecology on 3/28/12 and Addendum on 9/28/12.No new sources identified.
Nisqually River Tributaries TMDL (Fecal Coliform and Dissolved Oxygen)	Provide replacement bags at pet waste station on the dike at McAllister Creek or close access to the dike.	As needed	Replacement bags provided as needed.
	Participate in adaptive management meetings.	As needed	Not applicable during the reporting period.

TMDL Implementation Summary Table

TMDL Name	WSDOT's Required Actions	Implementation Deadlines	Status of Compliance
North Fork Palouse River TMDL (Dissolved Oxygen, pH)	If stormwater discharges that transport nitrogen over natural background levels to listed receiving waters are found from sources within WSDOT's right-of-way and control, WSDOT will apply BMPs from their SWMP or perform remediation to correct nitrogen discharges.	As needed	No new sources identified.
	WSDOT will implement their IDDE program	On-going	No IDDE events were reported.
	WSDOT will minimize the potential nitrogen impacts from hydro-seed and chemical treatments within the TMDL boundary.	On-going	Potential nitrogen impacts from hydro-seeding and chemical treatments are minimal due to the small amount of large construction projects in the North Fork Palouse watershed. Furthermore, it is standard practice to use compost and/or slow-release organic fertilizer in this watershed for various reasons, such as native seed requiring less nitrogen. When feasible, drill seeding is used instead of hydro-seeding.
	To address nitrogen delivery associated with adjacent erosion (run-on) including delivery that results from farming activities, WSDOT will work cooperatively with Ecology, the local jurisdiction, and other parties involved to prevent sediment from entering area waterways. At a minimum, WSDOT will: 1.) spend one day annually performing a highway evaluation with Ecology regional staff to document up to 15 erosion problem sites, 2.) Collaborate with Ecology on developing a map of the problem sites, 3.) Refer up to three priority sites annually to Ecology for follow-up, 4.) Adaptively manage with Ecology as needed.	On-going	WSDOT and Ecology staff completed the annual highway evaluation to identify erosion problem sites in April 2024. Ecology added potential problem sites to their non-point source mapping tool. WSDOT referred three priority erosion problem sites to Ecology on 6/23/24.

TMDL Implementation Summary Table

TMDL Name	WSDOT's Required Actions	Implementation Deadlines	Status of Compliance
Oakland Bay, Hammersley Inlet, and Selected Tributaries TMDL (Fecal Coliform)	Work with Ecology, Squaxin Island Tribe, and Mason County to determine potential sources of fecal coliform within WSDOT's right-of-way and control on a limited number of high priority Highway ³ stormwater discharge locations to Oakland Bay. ¹	On-going	Not applicable during the reporting period.
	Inventory highway discharge locations, implement pollutant source identification, and identification of illicit sources of bacteria to WSDOT's stormwater conveyance system within the TMDL boundary. Refer to Appendix 3 of the permit for specific details on prioritization and geographic scope of inventory efforts.	Complete by December 2015	Discharge inventory completed on 1/6/15.
	Prepare inventory findings report.	Submit by December 2015	Summary of Inventory Findings Report was submitted to Ecology on 12/28/15.
	Prepare addendum to the initial inventory findings report. Include updates on potential TMDL concerns, and follow-up actions taken and/or notification to others where a concern has been identified but occurred outside WSDOT's right-of-way and control.	Submit 6 months after initial inventory findings report	Addendum was submitted to Ecology on 6/23/16.
	If stormwater discharges that transport bacteria over natural background levels to listed receiving waters are found from sources within WSDOT's right-of-way and control, WSDOT will apply BMPs from their SWMPP or perform remediation to correct bacteria discharges. For run-on sources of bacteria identified by WSDOT that are from outside of WSDOT's right-of-way, WSDOT will notify Ecology and work cooperatively with Ecology, the local jurisdiction, and other parties involved for their resolution.	As needed	On 5/20/2024, a citizen called to report trash being dumped on WSDOT right of way on Hwy 101 near mile post 349. WSDOT handled clean up as scheduled maintenance that is ongoing in the area.

TMDL Implementation Summary Table

TMDL Name	WSDOT's Required Actions	Implementation Deadlines	Status of Compliance
Palouse River Watershed TMDL (Fecal Coliform)	Implement fecal coliform programmatic approach ² within the TMDL boundary. These efforts will focus identification of illicit sources of bacteria and sediment discharge to WSDOT's stormwater conveyance system. Refer to Appendix 3 of the permit for specific details on prioritization and geographic scope of inventory efforts.	Complete by March 2015	Discharge inventory completed in June 2014.
	Prepare inventory findings report.	Submit by March 2015	Summary of Inventory Findings Report was submitted to Ecology on 1/5/15.
	Prepare addendum to the initial inventory findings report. Include updates on potential TMDL concerns, and follow-up actions taken and/or notification to others where a concern has been identified but occurred outside WSDOT's right-of-way and control.	Submit 6 months after initial inventory findings report	Addendum was submitted to Ecology on 7/21/15.
	If stormwater discharges that transport bacteria over natural background levels to listed receiving waters are found from sources within WSDOT's right-of-way and control, WSDOT will apply BMPs from their SWMPP or perform remediation to correct bacteria discharges. For run-on sources of bacteria identified by WSDOT that are from outside of WSDOT's right-of-way, WSDOT will notify Ecology and work cooperatively with Ecology, the local jurisdiction, and other parties involved for their resolution.	As needed	No new sources identified.
Samish Bay Watershed TMDL (Fecal Coliform)	Participate in TMDL adaptive management process.	On-going	Not applicable during the reporting period.

TMDL Implementation Summary Table

TMDL Name	WSDOT's Required Actions	Implementation Deadlines	Status of Compliance
South Fork Palouse River TMDL (Fecal Coliform)	Prepare addendum to the initial inventory findings report. Include updates on potential TMDL concerns, and follow-up actions taken and/or notification to others where a concern has been identified but occurred outside WSDOT's right-of-way and control.	Submit 6 months after initial inventory findings report	Summary of Inventory Findings Report submitted to Ecology on 1/15/14. Addendum submitted to Ecology on 7/15/14 to provide an update on identified issues.
	If stormwater discharges that transport bacteria over natural background levels to listed receiving waters are found from sources within WSDOT's right-of-way and control, WSDOT will apply BMPs from their SWMPP or perform remediation to correct bacteria discharges. For run-on sources of bacteria identified by WSDOT that are from outside of WSDOT's right-of-way, WSDOT will notify Ecology and work cooperatively with Ecology, the local jurisdiction, and other parties involved for their resolution.	As needed	No new sources identified.
	Annually inspect under the Highway 195 bridge in Colfax and taken any necessary action to prevent pigeons from roosting there.	Perform inspection annually; Initiate action to prevent pigeon roosting within 90 days of annual inspection	Annual inspection completed in May 2024. A few pigeons and some guano were observed and reported to Ecology on 5/29/24.
	Implement programmatic approach at Highway 195 stormwater discharge locations and stormwater conveyance ditches discharging into Dry Fork Creek south of Pullman, WA.	Complete by March 2015	Discharge inventory completed in May 2014. Findings included in the Addendum, submitted to Ecology on 7/15/14.

TMDL Implementation Summary Table

TMDL Name	WSDOT's Required Actions	Implementation Deadlines	Status of Compliance
South Prairie Creek Watershed TMDL (Fecal Coliform and Temperature)	If stormwater discharges that transport bacteria over natural background levels to listed receiving waters are found from sources within WSDOT's right-of-way and control, WSDOT will apply BMPs from their SWMPP or perform remediation to correct bacteria discharges. For run-on sources of bacteria identified by WSDOT that are from outside of WSDOT's right-of-way, WSDOT will notify Ecology and work cooperatively with Ecology, the local jurisdiction, and other parties involved for their resolution.	As needed	No new sources identified.
	Participate in annual adaptive management meetings.	As needed	Not applicable during the reporting period.
Spokane River Watershed TMDL (Dissolved Oxygen)	Prepare addendum to the initial inventory findings report. Include updates on potential TMDL concerns, and follow-up actions taken and/or notification to others where a concern has been identified but occurred outside WSDOT's right-of-way and control.	Submit 6 months after initial inventory findings report	Summary of Inventory Findings Report submitted to Ecology on 10/15/13. Addendum submitted to Ecology on 4/15/14 to provide an update on identified issues.
	If stormwater discharges that transport phosphorus and ammonia over natural background levels to listed receiving waters are found from sources within WSDOT's right-of-way and control, WSDOT will apply BMPs from their SWMPP or perform remediation to correct the situation. For run-on sources of phosphorus and ammonia identified by WSDOT that are from outside of WSDOT's right-of-way, WSDOT will notify Ecology and work cooperatively with Ecology, the local jurisdiction, and other parties involved for their resolution.	As needed	13 IDDE events were reported during this reporting period, though none have been identified as sources of phosphorus or ammonia.

TMDL Implementation Summary Table

TMDL Name	WSDOT's Required Actions	Implementation Deadlines	Status of Compliance
Stillaguamish River Watershed TMDL (Fecal Coliform, Dissolved Oxygen, pH, Mercury, Arsenic and Temperature)	If stormwater discharges that transport bacteria over natural background levels to listed receiving waters are found from sources within WSDOT's right-of-way and control, WSDOT will apply BMPs from their SWMPP or perform remediation to correct bacteria discharges. For run-on sources of bacteria identified by WSDOT that are from outside of WSDOT's right-of-way, WSDOT will notify Ecology and work cooperatively with Ecology, the local jurisdiction, and other parties involved for their resolution.	As needed	Stillaguamish River TMDL Summary of Inventory Findings Report was submitted to Ecology on 12/28/12 and Addendum on 5/29/13. No new sources identified.
	Provide replacement bags and maintain educational signage at pest waste management stations at I-5 rest areas.	As needed	Replacement bags provided as needed.
Swamp Creek Basin TMDL (Fecal Coliform)	If stormwater discharges that transport bacteria over natural background levels to listed receiving waters are found from sources within WSDOT's right-of-way and control, WSDOT will apply BMPs from their SWMPP or perform remediation to correct bacteria discharges. For run-on sources of bacteria identified by WSDOT that are from outside of WSDOT's right-of-way, WSDOT will notify Ecology and work cooperatively with Ecology, the local jurisdiction, and other parties involved for their resolution.	As needed	Swamp Creek TMDL Summary of Inventory Findings Report was submitted to Ecology on 3/28/12 and Addendum on 9/28/12. No new sources identified.
Teanaway River TMDL (Temperature)	Maintain roads and roadside stormwater conveyance ditches to prevent entry of sediment into area waterways.	On-going	On-going

TMDL Implementation Summary Table

TMDL Name	WSDOT's Required Actions	Implementation Deadlines	Status of Compliance
Totten, Eld and Skookum Inlets Tributaries TMDL (Fecal Coliform and Temperature)	If stormwater discharges that transport bacteria over natural background levels to listed receiving waters are found from sources within WSDOT's right-of-way and control, WSDOT will apply BMPs from their SWMPP or perform remediation to correct bacteria discharges. For run-on sources of bacteria identified by WSDOT that are from outside of WSDOT's right-of-way, WSDOT will notify Ecology and work cooperatively with Ecology, the local jurisdiction, and other parties involved for their resolution.	As needed	Summary of Inventory Findings Report submitted to Ecology on 6/4/13. Addendum submitted to Ecology on 12/4/13 to provide an update on identified issues. No new sources identified.
Tucannon River Watershed TMDL (Temperature)	Maintain roads and roadside stormwater conveyance ditches to prevent entry of sediment into area waterways. ³	On-going	On-going
Upper Yakima River Watershed TMDL (Suspended Sediment, and Organochlorine Pesticide)	Maintain roads and roadside stormwater conveyance ditches to prevent sediment from entering area waterways. ³	On-going	On-going
Walla Walla River Watershed TMDL (Fecal Coliform, PCBs, Chlorinated Pesticide, Temperature, pH and Dissolved Oxygen)	The US 12 project will re-route 97 percent of the highway's traffic volume to the plateau located well above the Walla Walla River.	In progress	Phase 7 is operationally complete. Phase 8 is currently being designed but is not yet funded for construction. The current scheduled ad date for Phase 8 is January 2027.
	Where feasible, WSDOT will implement infiltration and/or dispersion to address the pollutants covered under this TMDL.	On-going	On-going
	WSDOT will follow the current Integrated Roadside Vegetation Management Plan (South Central Region, Area 4) within the Walla Walla TMDL boundary.	On-going	On-going

TMDL Implementation Summary Table

TMDL Name	WSDOT's Required Actions	Implementation Deadlines	Status of Compliance
Bear-Evans TMDL (Fecal Coliform, Dissolved Oxygen, and Temperature)	Implement WSDOT's NPDES municipal permit obligations that address the TMDL-listed pollutants.	On-going	On-going
Clarks Creek TMDL (Dissolved Oxygen, Sediment)			
Green River TMDL (Temperature)			
Henderson Inlet Watershed TMDL (Fecal Coliform)			
Liberty Bay Watershed TMDL (Fecal Coliform)			
Newaukum Creek TMDL (Temperature)			
Puyallup River Watershed TMDL (Fecal Coliform)			
Salmon Creek Watershed TMDL (Temperature)			
Sinclair and Dyes Inlet TMDL (Fecal Coliform)			
Snoqualmie River TMDL (Temperature)			
Upper Naches River and Cowiche Creek TMDL (Temperature)			
Whatcom, Squalicum and Padden Creeks TMDL (Temperature)			

1. This work may include but is not limited to, site visits, data review, and collaborative problem solving. If sources are identified within WSDOT's control, WSDOT will develop a plan and initiate efforts to apply best management practices from their SWMPP or perform remediation to correct the situations.
2. For information regarding WSDOT's programmatic approach, please refer to Appendix 3 of the permit.
3. WSDOT implements the Regional Road Maintenance ESA Program (<https://wsdot.wa.gov/construction-planning/protecting-environment/regional-roadside-maintenance>) covering routine maintenance activities related to aspects of WSDOT's stormwater facilities and stream crossings.

Table 4. Stormwater BMPs Built Statewide During the 2023 Reporting Period

State Route	Region	In Permit Area	In TMDL Area	Project Name	Infiltration ¹	Dispersion ²	Biofiltration ³	Wet Pool ⁴	Other	Total
002	ER	Yes	Yes	US 2/Colbert Rd - Intersection Revision		7				7
026	ER	No	Yes	SR 26/Dusty to Colfax - Add Climbing Lanes			12	8		20
000	HQ	Yes	No	Northup Prewash Pad Retrofit NPDES - NWR					1	1
002	NC	Yes	Partial	US 2/97 Easy Street - Roundabout		2	1			3
028	NC	No	No	SR 28/White Trail Rd - Roundabout		1				1
020	NW	No	Partial	SR 20/Unnamed Tributary to Red Creek - Fish Passage			2			2
520	NW	Yes	No	SR 520/148th Ave NE Interchange - Ramp Paving			5	1		6
405	NW	Yes	No	I-405/NE 132nd Street Bridges - Seismic Retrofit			3	8		11
203	NW	Yes	Yes	High Rock Road & SR 203 St SE - Interchange Improvement			2			2
106	OR	No	No	SR 106/Twanoh Creek- Remove Fish Barrier			1			1
007	OR	Yes	No	SR 7/Unnamed Trib to S Creek 1 & S Creek 2 - Remove Fish Barriers			6			6
101	OR	No	No	US 101/Leland Creek and Unnamed Tribs - Remove Fish Barriers			2			2
305	OR	Yes	No	SR 305/Murden Creek - Remove Fish Barrier			2			2
005	OR	Yes	Yes	I-5/Portland Ave to Port of Tacoma Rd - SB HOV			1	1		2
012	SC	No	Yes	US 12/Nine Mile Hill to Frenchtown Vic - Build New Highway	1	54				55
014/141/142	SW	No	No	SR 14 et al/West Skamania and Klickitat Counties - Stormwater Retrofit			9			9
503	SW	Yes	No	SR 503 Shared Use Pathway				2		2
502/503	SW	Yes	No	SR 503/502 Intersection Improvements				1	2	3
				Total	1	64	46	21	3	135

1. Infiltration includes: Infiltration Trench, Infiltration Pond, Infiltration Swale, Infiltration Vault, and Drywell.

2. Dispersion includes: Natural Dispersion, and Engineered Dispersion.

3. Biofiltration includes: Biofiltration Swale, Wet Biofiltration Swale, Bioinfiltration Pond, Vegetated Filter Strip, Compost Amended Vegetated Filter Strip, and Media Filter Drain.

4. Wet Pool includes: Constructed Stormwater Treatment Wetland - Detention Pond, Combined Stormwater Treatment Wetland/Detention Pond, Constructed Stormwater Treatment Wetland, Combined Wet/Detention Pond, and Detention Pond.

Table 5. Summary of IDDE Issues and Remediation Activities

Date	Type of Discharge	State Route	Milepost	Discovery	Pollutant	Action Taken	G3 Notification to Ecology	Status
7/1/2023	Discharge/Traffic Spill	104	13.76	WSP	Fuel		No	Resolved
7/3/2023	Illicit Discharge	16	28.7	WSP	Sewage	Cleaned	Yes	Resolved
7/3/2023	Discharge/Traffic Spill	20	55.06	WSP	Hydraulic Fluid	Cleaned	No	Resolved
7/3/2023	Discharge/Traffic Spill	240	36	WSP	Fuel		No	Resolved
7/3/2023	Discharge/Traffic Spill	395	46	WSP	Unknown	Cleaned	No	Resolved
7/5/2023	Discharge/Traffic Spill	3	31.04	WSP	Diesel	Cleaned	No	Resolved
7/5/2023	Illicit Discharge	522	9.95	King County Metro	Coolant	Cleaned	Yes	Resolved
7/7/2023	Discharge/Traffic Spill	12	338.72	WSP	Fuel	Cleaned	No	Resolved
7/9/2023	Discharge/Traffic Spill	395	178.7	WSP	Diesel		No	Resolved
7/10/2023	Discharge/Traffic Spill	9	20.5	TMS	Diesel	Cleaned	No	Resolved
7/11/2023	Discharge/Traffic Spill	16	12.77	WSP	Fuel		No	Resolved
7/11/2023	Discharge/Traffic Spill	167	14.31	TMS	Unknown	Cleaned	No	Resolved
7/12/2023	Discharge/Traffic Spill	395	233.9	WSP	Diesel		No	Resolved
7/13/2023	Discharge/Traffic Spill	18	23.6	WSP	Diesel	Cleaned	No	Resolved
7/14/2023	Discharge/Traffic Spill	2	326.3	WSP	Fuel	Cleaned	No	Resolved
7/14/2023	Illicit Discharge	99	50.35	Citizen	Oil		No	Resolved
7/15/2023	Discharge/Traffic Spill	90	8.41	Bellevue Fire Dept	Vehicle Fluids	Cleaned	No	Resolved
7/15/2023	Discharge/Traffic Spill	90	282	WSP	Fuel	Cleaned	No	Resolved
7/16/2023	Discharge/Traffic Spill	16	0.41	WSP	Oil	Cleaned	No	Resolved
7/17/2023	Discharge/Traffic Spill	2	61	WSDOT	Oil		No	Resolved
7/18/2023	Discharge/Traffic Spill	26	23	WSP	Diesel		No	Resolved
7/19/2023	Discharge/Traffic Spill	5	242.9	WSP	Diesel	Cleaned	Yes	Resolved
7/19/2023	Discharge/Traffic Spill	5	116.7	WSP	Diesel		No	Resolved

Detailed IDDE Issues Table

Date	Type of Discharge	State Route	Milepost	Discovery	Pollutant	Action Taken	G3 Notification to Ecology	Status
7/19/2023	Discharge/Traffic Spill	127	0	WSDOT	Oil	Cleaned	No	Resolved
7/19/2023	Illicit Discharge	305	2.43	Contractor	Turbid Water		Yes	Resolved
7/19/2023	Illicit Discharge	405	13.8	Bellevue Fire Dept	NovaCool Foam		Yes	Resolved
7/22/2023	Discharge/Traffic Spill	2	20.12	WSP	Oil	Cleaned	No	Resolved
7/23/2023	Discharge/Traffic Spill	90	9.72	WSP	Oil	Cleaned	No	Resolved
7/24/2023	Discharge/Traffic Spill	109	32	WSP	Oil		No	Resolved
7/25/2023	Illicit Discharge	90	4.52	Contractor	Turbid Water	Cleaned	Yes	Resolved
7/25/2023	Discharge/Traffic Spill	90	275.73	WSP	Oil		No	Resolved
7/26/2023	Discharge/Traffic Spill	167	15.86	Citizen	Diesel	Cleaned	No	Resolved
7/27/2023	Discharge/Traffic Spill	11	0.1	WSP	Oil	Cleaned	No	Resolved
7/29/2023	Discharge/Traffic Spill	101	352.6	WSP	Oil	Cleaned	No	Resolved
7/31/2023	Discharge/Traffic Spill	410	11.46	WSDOT	Oil	Cleaned	No	Resolved
8/1/2023	Discharge/Traffic Spill	5	128.91	TMS	Oil		No	Resolved
8/3/2023	Discharge/Traffic Spill	3	29	WSP	Oil	Cleaned	No	Resolved
8/8/2023	Discharge/Traffic Spill	5	149.06	TMS	Oil	Cleaned	No	Resolved
8/8/2023	Discharge/Traffic Spill	90	257	WSP	Unknown	Cleaned	No	Resolved
8/10/2023	Discharge/Traffic Spill	90	282.11	WSDOT	Oil	Cleaned	No	Resolved
8/10/2023	Discharge/Traffic Spill	405	15	WSP	Diesel	Cleaned	Yes	Resolved
8/11/2023	Illicit Discharge	16	8	Citizen	Polystrene		No	Resolved
8/11/2023	Discharge/Traffic Spill	82	17	WSDOT	Fuel		No	Resolved
8/14/2023	Discharge/Traffic Spill	5	169.44	WSP	Vehicle Fluids	Cleaned	No	Resolved
8/14/2023	Illicit Discharge	90	25.66	Citizen	Unknown		No	Resolved
8/14/2023	Discharge/Traffic Spill	99	50.2	WSDOT	Oil	Cleaned	No	Resolved
8/15/2023	Discharge/Traffic Spill	82	17	WSDOT	Diesel	Cleaned	No	Resolved

Detailed IDDE Issues Table

Date	Type of Discharge	State Route	Milepost	Discovery	Pollutant	Action Taken	G3 Notification to Ecology	Status
8/15/2023	Discharge/Traffic Spill	99	49.66	Community Transit	Coolant	Cleaned	Yes	Resolved
8/16/2023	Discharge/Traffic Spill	3	30.51	Kitsap PD	Vehicle Fluids	Cleaned	No	Resolved
8/21/2023	Discharge/Traffic Spill	14	7.3	WSP	Vehicle Fluids	Cleaned	No	Resolved
8/23/2023	Discharge/Traffic Spill	2	111	WSP	Oil	Cleaned	No	Resolved
8/25/2023	Discharge/Traffic Spill	5	128	WSP	Vehicle Fluids		No	Resolved
8/25/2023	Discharge/Traffic Spill	405	17.99	City of Kirkland	Fire Fighting Foam	Cleaned	Yes	Resolved
8/26/2023	Discharge/Traffic Spill	5	48	WSP	Diesel	Cleaned	No	Resolved
8/26/2023	Discharge/Traffic Spill	5	166.4	TMS	Diesel	Cleaned	No	Resolved
8/29/2023	Discharge/Traffic Spill	405	11.28	WSP	Fuel	Cleaned	Yes	Resolved
8/30/2023	Discharge/Traffic Spill	509	0.71	WSP	Oil	Cleaned	No	Resolved
8/31/2023	Discharge/Traffic Spill	205	27.2	WSP	Diesel	Cleaned	No	Resolved
8/31/2023	Discharge/Traffic Spill	401	5	WSP	Oil	Cleaned	No	Resolved
9/3/2023	Discharge/Traffic Spill	303	6.5	Kitsap PD	Transmission Oil	Cleaned	No	Resolved
9/5/2023	Discharge/Traffic Spill	262	17	WSP	Diesel	Cleaned	No	Resolved
9/6/2023	Discharge/Traffic Spill	167	19.74	Kent Fire Dept.	Diesel	Cleaned	No	Resolved
9/7/2023	Illicit Connection	539	2.5	WSDOT	Unknown		Yes	Resolved
9/8/2023	Discharge/Traffic Spill	7	25.92	WSP	Oil		No	Resolved
9/11/2023	Discharge/Traffic Spill	5	156.52	WA EMD	Diesel	Cleaned	No	Resolved
9/13/2023	Discharge/Traffic Spill	522	14.09	WSP	Diesel	Cleaned	Yes	Resolved
9/18/2023	Discharge/Traffic Spill	5	198	Citizen	Diesel	Cleaned	No	Resolved
9/18/2023	Illicit Discharge	203	7	Citizen	Sediment	Cleaned	No	Resolved
9/19/2023	Discharge/Traffic Spill	5	131.19	WSP	Fuel	Cleaned	No	Resolved
9/19/2023	Discharge/Traffic Spill	12	201	WSP	Fuel	Cleaned	No	Resolved
9/20/2023	Discharge/Traffic Spill	536	1.96	WSP	Oil	Cleaned	No	Resolved

Detailed IDDE Issues Table

Date	Type of Discharge	State Route	Milepost	Discovery	Pollutant	Action Taken	G3 Notification to Ecology	Status
9/23/2023	Discharge/Traffic Spill	5	104	WSP	Fuel	Cleaned	No	Resolved
9/24/2023	Discharge/Traffic Spill	5	0.1	WSP	Vehicle Fluids	Cleaned	No	Resolved
9/24/2023	Discharge/Traffic Spill	14	74	WSP	Fuel	Cleaned	No	Resolved
9/25/2023	Discharge/Traffic Spill	2	31.2	Snohomish Fire Dept.	Vehicle Fluids	Cleaned	Yes	Resolved
9/25/2023	Discharge/Traffic Spill	4	35.5	WSP	Vehicle Fluids	Cleaned	No	Resolved
9/26/2023	Discharge/Traffic Spill	24	44	WSDOT	Fuel		No	Resolved
9/26/2023	Discharge/Traffic Spill	231	53.35	WSP	Vehicle Fluids	Cleaned	No	Resolved
9/27/2023	Discharge/Traffic Spill	2	98	WSP	Oil	Cleaned	No	Resolved
9/27/2023	Discharge/Traffic Spill	305	4.28	Bainbridge Island PD	Diesel	Cleaned	No	Resolved
9/27/2023	Illicit Discharge	405	20.9	WSDOT	Turbid Water	Cleaned	Yes	Resolved
9/27/2023	Illicit Discharge	516	1.95	PBS Engineering	Turbid Water		No	Resolved
9/27/2023	Illicit Discharge	539	11	Citizen	Sediment	Cleaned	No	Resolved
9/28/2023	Discharge/Traffic Spill	16	7.8	WSDOT	Oil	Cleaned	No	Resolved
9/28/2023	Illicit Discharge	18	27.75	WSDOT	Turbid Water	Cleaned	No	Resolved
9/28/2023	Illicit Connection	509	24.4	WSDOT	Stormwater		Yes	Resolved
9/30/2023	Discharge/Traffic Spill	520	6.24	WSDOT	Vehicle Fluids	Cleaned	Yes	Resolved
10/1/2023	Discharge/Traffic Spill	5	166.45	TMS	Oil	Cleaned	No	Resolved
10/3/2023	Discharge/Traffic Spill	2	97	WSP	Vehicle Fluids	Cleaned	Yes	Resolved
10/3/2023	Discharge/Traffic Spill	5	154	TMS	Fuel	Cleaned	No	Resolved
10/4/2023	Discharge/Traffic Spill	2	119.5	River Com	Hydraulic Fluid	Cleaned	No	Resolved
10/5/2023	Discharge/Traffic Spill	5	205.3	Snohomish County	Diesel	Cleaned	No	Resolved
10/6/2023	Discharge/Traffic Spill	90	165	WSP	Vehicle Fluids	Cleaned	No	Resolved
10/8/2023	Discharge/Traffic Spill	90	4.48	TMS	Fuel	Cleaned	No	Resolved
10/9/2023	Discharge/Traffic Spill	167	2.38	WSP	Oil	Cleaned	No	Resolved

Date	Type of Discharge	State Route	Milepost	Discovery	Pollutant	Action Taken	G3 Notification to Ecology	Status
10/9/2023	Discharge/Traffic Spill	202	24.64	Citizen	Chemicals		No	Resolved
10/11/2023	Discharge/Traffic Spill	5	203.7	WSP	Diesel	Cleaned	No	Resolved
10/11/2023	Illicit Discharge	18	27.57	WSDOT	Turbid Water	Cleaned	Yes	Resolved
10/12/2023	Illicit Discharge	18	26.32	WSDOT	Turbid Water	Cleaned	Yes	Resolved
10/15/2023	Discharge/Traffic Spill	90	81	WSP	Fuel	Cleaned	No	Resolved
10/16/2023	Discharge/Traffic Spill	5	103.98	WSP	Paint	Cleaned	No	Resolved
10/19/2023	Discharge/Traffic Spill	5	14	WSP	Fuel	Cleaned	No	Resolved
10/19/2023	Discharge/Traffic Spill	90	37.95	WSP	Fuel	Cleaned	No	Resolved
10/23/2023	Illicit Discharge	97	207.25	Citizen	Oil		No	Resolved
10/24/2023	Discharge/Traffic Spill	302	10.6	WSP	Diesel	Cleaned	No	Resolved
10/26/2023	Illicit Discharge	18	26.37	Contractor	Turbid Water	Cleaned	Yes	Resolved
10/26/2023	Discharge/Traffic Spill	90	265	WSP	Fuel		No	Resolved
10/26/2023	Discharge/Traffic Spill	167	12.15	WSP	Fuel	Cleaned	No	Resolved
10/27/2023	Discharge/Traffic Spill	17	51	Moses Lake Public Works	Diesel	Cleaned	No	Resolved
10/27/2023	Discharge/Traffic Spill	90	299.8	Spokane Valley Fire	Oil		Yes	Resolved
10/30/2023	Discharge/Traffic Spill	509	24.3	WSDOT	Coolant	Cleaned	No	Resolved
10/31/2023	Discharge/Traffic Spill	5	266	Sanitary Services	Coolant	Cleaned	No	Resolved
10/31/2023	Discharge/Traffic Spill	28	20	WSP	Diesel	Cleaned	Yes	Resolved
10/31/2023	Illicit Discharge	405	20.9	Contractor	Diesel	Cleaned	No	Resolved
10/31/2023	Illicit Connection	900	7.83	King County	Sewage	Cleaned	Yes	Resolved
11/2/2023	Discharge/Traffic Spill	3	54	WSDOT	Diesel	Cleaned	No	Resolved
11/2/2023	Illicit Discharge	5	147.15	Sound Transit	Turbid Water	Cleaned	Yes	Resolved
11/2/2023	Illicit Discharge	5	149	Contractor	Turbid Water		Yes	Resolved

Date	Type of Discharge	State Route	Milepost	Discovery	Pollutant	Action Taken	G3 Notification to Ecology	Status
11/2/2023	Illicit Discharge	18	25.62	WSDOT	Turbid Water	Cleaned	Yes	Resolved
11/2/2023	Illicit Discharge	405	7.19	Contractor	Turbid Water	Cleaned	Yes	Resolved
11/3/2023	Illicit Discharge	18	26.31	WSDOT	Turbid Water	Cleaned	Yes	Resolved
11/3/2023	Illicit Discharge	18	26.33	Contractor	Turbid Water		Yes	Resolved
11/3/2023	Discharge/Traffic Spill	904	12.51	City of Cheney	Paint		No	Resolved
11/4/2023	Illicit Discharge	516	0.41	Ecology	Turbid Water		Yes	Resolved
11/6/2023	Illicit Discharge	305	2.45	WSDOT	Turbid Water		Yes	Resolved
11/6/2023	Illicit Discharge	405	7.1	Contractor	Turbid Water		No	Resolved
11/6/2023	Illicit Discharge	520	0.2	Contractor	Turbid Water		Yes	Resolved
11/7/2023	Illicit Discharge	509	3.5	Contractor	Turbid Water	Cleaned	Yes	Resolved
11/7/2023	Illicit Discharge	525	3.5	City of Mukilteo	Turbid Water	Cleaned	Yes	Resolved
11/8/2023	Illicit Discharge	5	168.98	City of Seattle	Turbid Water	Cleaned	Yes	Resolved
11/8/2023	Illicit Discharge	5	145.75	Contractor	Turbid Water	Cleaned	Yes	Resolved
11/8/2023	Discharge/Traffic Spill	90	278.25	WSP	Vehicle Fluids	Cleaned	No	Resolved
11/8/2023	Discharge/Traffic Spill	155	28	WSP	Oil	Cleaned	No	Resolved
11/9/2023	Discharge/Traffic Spill	9	86	WSP	Hydraulic Fluid	Cleaned	No	Resolved
11/9/2023	Discharge/Traffic Spill	20	193.3	City of Winthrop	Fuel		No	Resolved
11/10/2023	Discharge/Traffic Spill	405	12.84	WSP	Diesel	Cleaned	No	Resolved
11/11/2023	Discharge/Traffic Spill	12	41.9	WSP	Fuel	Cleaned	Yes	Resolved
11/13/2023	Illicit Discharge	3	41.1	Contractor	Turbid Water		Yes	Resolved
11/13/2023	Illicit Discharge	405	6.75	Contractor	Turbid Water	Cleaned	Yes	Resolved
11/14/2023	Illicit Discharge	532	10	Snohomish County	Fuel		Yes	Resolved
11/15/2023	Discharge/Traffic Spill	5	160	WSDOT	Coolant	Cleaned	No	Resolved
11/20/2023	Illicit Connection	5	168.07	Contractor	Turbid Water		Yes	Resolved

Date	Type of Discharge	State Route	Milepost	Discovery	Pollutant	Action Taken	G3 Notification to Ecology	Status
11/20/2023	Illicit Discharge	90	6.85	Ecology	Waste water	Cleaned	Yes	Resolved
11/22/2023	Discharge/Traffic Spill	520	11.65	Contractor	Diesel	Cleaned	No	Resolved
11/25/2023	Discharge/Traffic Spill	5	92	WSP	Diesel	Cleaned	No	Resolved
11/25/2023	Discharge/Traffic Spill	90	27.82	TMS	Oil	Cleaned	No	Resolved
11/26/2023	Discharge/Traffic Spill	5	165	WSP	Oil	Cleaned	No	Resolved
11/26/2023	Discharge/Traffic Spill	17	34	WSP	Ethanol	Cleaned	No	Resolved
11/28/2023	Discharge/Traffic Spill	18	0	City of Pacific	Diesel	Cleaned	No	Resolved
11/29/2023	Discharge/Traffic Spill	5	15	WSDOT	Diesel	Cleaned	No	Resolved
11/30/2023	Discharge/Traffic Spill	167	10.67	Ecology	Diesel		No	Resolved
12/1/2023	Illicit Discharge	5	149.19	Contractor	Turbid Water	Cleaned	Yes	Resolved
12/3/2023	Discharge/Traffic Spill	410	9.32	WSP	Vehicle Fluids	Cleaned	No	Resolved
12/4/2023	Discharge/Traffic Spill	5	114.86	WSP	Fuel	Cleaned	Yes	Resolved
12/5/2023	Discharge/Traffic Spill	5	176.03	WSP	Diesel	Cleaned	Yes	Resolved
12/5/2023	Discharge/Traffic Spill	18	26.18	WSP	Palmitic Acid	Cleaned	Yes	Resolved
12/5/2023	Illicit Discharge	18	26.34	Contractor	Turbid Water	Cleaned	Yes	Resolved
12/5/2023	Illicit Discharge	305	2.42	Contractor	Turbid Water	Cleaned	Yes	Resolved
12/5/2023	Illicit Discharge	405	8.33	Contractor	Turbid Water	Cleaned	Yes	Resolved
12/5/2023	Discharge/Traffic Spill	405	7.45	Renton Regional Fire	Diesel		Yes	Resolved
12/6/2023	Illicit Discharge	5	158.2	Ecology	Sewage	Cleaned	Yes	Resolved
12/6/2023	Discharge/Traffic Spill	5	117.95	City of DuPont	Fuel	Cleaned	No	Resolved
12/6/2023	Illicit Discharge	5	147.58	Contractor	Turbid Water	Cleaned	Yes	Resolved
12/6/2023	Illicit Discharge	5	144.7	Contractor	Turbid Water		Yes	Resolved
12/6/2023	Discharge/Traffic Spill	395	16.8	WSP	Diesel	Cleaned	No	Resolved
12/6/2023	Illicit Discharge	405	7	Contractor	Turbid Water		Yes	Resolved

Detailed IDDE Issues Table

Date	Type of Discharge	State Route	Milepost	Discovery	Pollutant	Action Taken	G3 Notification to Ecology	Status
12/6/2023	Illicit Discharge	516	2.05	WSDOT	Turbid Water		Yes	Resolved
12/6/2023	Illicit Discharge	520	11.65	Contractor	Turbid Water		Yes	Resolved
12/6/2023	Illicit Discharge	520	0.25	Contractor	Turbid Water	Cleaned	Yes	Resolved
12/7/2023	Discharge/Traffic Spill	26	11	WSP	Chemicals	Cleaned	No	Resolved
12/7/2023	Illicit Discharge	90	9.7	Contractor	Turbid Water		Yes	Resolved
12/7/2023	Illicit Discharge	405	9.08	Contractor	Turbid Water	Cleaned	Yes	Resolved
12/7/2023	Illicit Discharge	405	8.38	Contractor	Turbid Water		Yes	Resolved
12/7/2023	Illicit Discharge	405	9.84	Contractor	Turbid Water	Cleaned	Yes	Resolved
12/7/2023	Illicit Discharge	405	10.14	Contractor	Turbid Water		Yes	Resolved
12/8/2023	Discharge/Traffic Spill	5	17.8	WSDOT	Diesel	Cleaned	No	Resolved
12/8/2023	Illicit Discharge	90	25.5	Contractor	Diesel	Cleaned	Yes	Resolved
12/8/2023	Discharge/Traffic Spill	518	3.8	WSP	Diesel	Cleaned	No	Resolved
12/8/2023	Illicit Discharge	520	1.2	Contractor	Turbid Water	Cleaned	Yes	Resolved
12/9/2023	Discharge/Traffic Spill	90	264.3	WSP	Diesel		No	Resolved
12/10/2023	Discharge/Traffic Spill	97	241.5	WSP	Diesel	Cleaned	No	Resolved
12/10/2023	Illicit Discharge	534	0.58	WSP	Gasoline	Cleaned	Yes	Resolved
12/12/2023	Discharge/Traffic Spill	18	26	WSP	Fuel	Cleaned	Yes	Resolved
12/12/2023	Discharge/Traffic Spill	305	4.28	Kitsap PD	Oil	Cleaned	No	Resolved
12/13/2023	Discharge/Traffic Spill	5	76.2	WSP	Diesel	Cleaned	No	Resolved
12/14/2023	Illicit Connection	502	3.6	Clark County	Grease		Yes	Resolved
12/16/2023	Discharge/Traffic Spill	5	202	Ecology	Diesel	Cleaned	No	Resolved
12/16/2023	Illicit Discharge	90	4	WSDOT	Fire Fighting Foam	Cleaned	Yes	Resolved
12/19/2023	Discharge/Traffic Spill	5	82	WSP	Vehicle Fluids	Cleaned	No	Resolved
12/19/2023	Discharge/Traffic Spill	101	177	WSDOT	Diesel	Cleaned	No	Resolved

Detailed IDDE Issues Table

Date	Type of Discharge	State Route	Milepost	Discovery	Pollutant	Action Taken	G3 Notification to Ecology	Status
12/21/2023	Discharge/Traffic Spill	12	80.6	WSP	Vehicle Fluids	Cleaned	No	Resolved
12/22/2023	Discharge/Traffic Spill	5	176.2	WSP	Oil	Cleaned	Yes	Resolved
12/22/2023	Illicit Discharge	18	27.81	Contractor	Turbid Water	Cleaned	Yes	Resolved
12/22/2023	Illicit Discharge	18	26.37	Contractor	Turbid Water	Cleaned	Yes	Resolved
12/22/2023	Illicit Discharge	516	2.1	Contractor	Turbid Water		Yes	Resolved
12/22/2023	Illicit Discharge	516	1.96	Contractor	Turbid Water		Yes	Resolved
12/22/2023	Illicit Discharge	520	0.19	Contractor	Turbid Water		Yes	Resolved
12/22/2023	Illicit Discharge	520	1.2	Contractor	Turbid Water		Yes	Resolved
12/23/2023	Illicit Discharge	405	7.65	Contractor	Turbid Water		Yes	Resolved
12/26/2023	Discharge/Traffic Spill	90	74	WSP	Oil		No	Resolved
12/26/2023	Discharge/Traffic Spill	900	21.09	Citizen	Vehicle Fluids	Cleaned	No	Resolved
12/27/2023	Illicit Discharge	405	9.4	City of Bellevue	Turbid Water		Yes	Resolved
12/28/2023	Discharge/Traffic Spill	104	8.87	WSP	Fuel	Cleaned	No	Resolved
1/2/2024	Discharge/Traffic Spill	5	49	WSP	Fuel	Cleaned	No	Resolved
1/3/2024	Discharge/Traffic Spill	90	283.73	WSDOT	Diesel	Cleaned	Yes	Resolved
1/5/2024	Illicit Discharge	5	143.83	Contractor	Turbid Water	Cleaned	Yes	Resolved
1/8/2024	Discharge/Traffic Spill	5	254	WSP	Diesel	Cleaned	Yes	Resolved
1/8/2024	Discharge/Traffic Spill	16	8.87	WSP	Oil	Cleaned	No	Resolved
1/8/2024	Illicit Discharge	509	3.6	Ecology	Turbid Water		Yes	Resolved
1/8/2024	Illicit Discharge	516	1.99	Ecology	Turbid Water	Cleaned	Yes	Resolved
1/9/2024	Illicit Discharge	5	148.57	Ecology	Turbid Water		Yes	Resolved
1/9/2024	Discharge/Traffic Spill	20	55.6	City of Anacortes	Diesel	Cleaned	Yes	Resolved
1/9/2024	Illicit Discharge	405	4.5	Contractor	Turbid Water		Yes	Resolved
1/9/2024	Illicit Discharge	520	0.2	Contractor	Turbid Water		Yes	Resolved

Detailed IDDE Issues Table

Date	Type of Discharge	State Route	Milepost	Discovery	Pollutant	Action Taken	G3 Notification to Ecology	Status
1/10/2024	Discharge/Traffic Spill	5	185	WSP	Diesel	Cleaned	No	Resolved
1/10/2024	Discharge/Traffic Spill	5	155.31	WSP	Diesel	Cleaned	No	Resolved
1/11/2024	Discharge/Traffic Spill	5	140.65	Freight Company	Oil	Cleaned	No	Resolved
1/17/2024	Discharge/Traffic Spill	2	22.5	WSDOT	Hydraulic Fluid	Cleaned	Yes	Resolved
1/17/2024	Illicit Discharge	18	27.8	Contractor	Turbid Water		No	Resolved
1/18/2024	Illicit Discharge	3	40.81	WSDOT	Turbid Water	Cleaned	Yes	Resolved
1/18/2024	Illicit Discharge	5	147.55	Contractor	Turbid Water	Cleaned	Yes	Resolved
1/18/2024	Discharge/Traffic Spill	5	128.67	WSP	Oil	Cleaned	No	Resolved
1/18/2024	Discharge/Traffic Spill	90	283.85	WSP	Diesel	Cleaned	No	Resolved
1/22/2024	Illicit Discharge	3	41	Contractor	Turbid Water	Cleaned	Yes	Resolved
1/22/2024	Illicit Discharge	5	147.55	Contractor	Turbid Water	Cleaned	Yes	Resolved
1/22/2024	Illicit Discharge	12	178	WSP	Diesel	Cleaned	No	Resolved
1/23/2024	Illicit Discharge	5	199.1	Ecology	Turbid Water		No	Resolved
1/23/2024	Illicit Discharge	405	23.5	WSDOT	Turbid Water	Cleaned	Yes	Resolved
1/24/2024	Discharge/Traffic Spill	4	41	WSP	Fuel	Cleaned	No	Resolved
1/25/2024	Illicit Connection	5	148.85	WSDOT	Unknown		No	Resolved
1/25/2024	Illicit Discharge	18	27.82	Ecology	Turbid Water	Cleaned	Yes	Resolved
1/25/2024	Illicit Discharge	509	3.6	Ecology	Turbid Water	Cleaned	Yes	Resolved
1/26/2024	Discharge/Traffic Spill	410	33	WSDOT	Manure	Cleaned	No	Resolved
1/27/2024	Illicit Discharge	161	13.15	Ecology	Fuel	Cleaned	No	Resolved
1/29/2024	Illicit Discharge	405	18.1	Ecology	Turbid Water		Yes	Resolved
1/30/2024	Discharge/Traffic Spill	18	2.7	Valley Regional Fire	Sewage	Cleaned	Yes	Resolved
1/31/2024	Discharge/Traffic Spill	5	77.7	Chehalis PD	Fuel	Cleaned	No	Resolved
1/31/2024	Discharge/Traffic Spill	5	0.1	ODOT	Diesel	Cleaned	No	Resolved

Detailed IDDE Issues Table

Date	Type of Discharge	State Route	Milepost	Discovery	Pollutant	Action Taken	G3 Notification to Ecology	Status
1/31/2024	Illicit Discharge	12	293	WSP	Biohazard Material	Cleaned	No	Resolved
2/2/2024	Discharge/Traffic Spill	167	24.6	WSP	Gasoline	Cleaned	Yes	Resolved
2/2/2024	Discharge/Traffic Spill	534	0.58	Ecology	Diesel	Cleaned	Yes	Resolved
2/4/2024	Discharge/Traffic Spill	5	81	WSP	Fuel	Cleaned	No	Resolved
2/5/2024	Illicit Connection	20	83.5	WSDOT	Unknown		No	Resolved
2/5/2024	Discharge/Traffic Spill	101	7.1	WSP	Oil	Cleaned	No	Resolved
2/6/2024	Discharge/Traffic Spill	5	149.2	WSDOT	Hydraulic Fluid		Yes	Resolved
2/6/2024	Illicit Discharge	410	26.3	WSDOT	Turbid Water	Cleaned	No	Resolved
2/7/2024	Discharge/Traffic Spill	18	7.9	WSDOT	Vehicle Fluids	Cleaned	No	Resolved
2/9/2024	Discharge/Traffic Spill	5	133.86	WSP	Oil	Cleaned	No	Resolved
2/9/2024	Discharge/Traffic Spill	405	14.85	WSDOT	Diesel		No	Resolved
2/9/2024	Discharge/Traffic Spill	503	49	WSP	Fuel	Cleaned	Yes	Resolved
2/11/2024	Discharge/Traffic Spill	5	104.32	WSP	Fuel	Cleaned	No	Resolved
2/11/2024	Discharge/Traffic Spill	160	0.44	WSP	Transmission Oil	Cleaned	No	Resolved
2/12/2024	Discharge/Traffic Spill	5	172.87	WSP	Diesel	Cleaned	Yes	Resolved
2/12/2024	Discharge/Traffic Spill	104	28.5	WSP	Vehicle Fluids	Cleaned	Yes	Resolved
2/13/2024	Illicit Discharge	516	2	Contractor	Turbid Water	Cleaned	Yes	Resolved
2/15/2024	Discharge/Traffic Spill	14	35.5	WSP	Diesel		No	Resolved
2/16/2024	Discharge/Traffic Spill	20	407	WSDOT	Zinc Concentrate	Cleaned	No	Resolved
2/19/2024	Discharge/Traffic Spill	167	20	TMS	Fuel	Cleaned	No	Resolved
2/20/2024	Illicit Discharge	542	3.45	WSDOT	Iron Oxide		Yes	Resolved
2/22/2024	Illicit Discharge	240	25.15	Citizen	Trash	Cleaned	No	Resolved
2/23/2024	Discharge/Traffic Spill	6	49	WSDOT	Oil	Cleaned	No	Resolved
2/24/2024	Discharge/Traffic Spill	18	23.6	WSP	Oil	Cleaned	No	Resolved

Detailed IDDE Issues Table

Date	Type of Discharge	State Route	Milepost	Discovery	Pollutant	Action Taken	G3 Notification to Ecology	Status
2/25/2024	Discharge/Traffic Spill	161	18.21	WSP	Diesel	Cleaned	No	Resolved
2/26/2024	Discharge/Traffic Spill	5	191.69	TMS	Diesel	Cleaned	No	Resolved
2/26/2024	Illicit Connection	11	16.1	Ecology	Unknown		Yes	Resolved
2/28/2024	Illicit Discharge	5	149.19	Contractor	Turbid Water		Yes	Resolved
2/28/2024	Illicit Discharge	405	18.1	City of Redmond	Turbid Water	Cleaned	Yes	Resolved
2/29/2024	Discharge/Traffic Spill	17	24	WSP	Fuel		No	Resolved
2/29/2024	Discharge/Traffic Spill	97	241.5	WSDOT	Vehicle Fluids		No	Resolved
2/29/2024	Discharge/Traffic Spill	900	15	WSP	Oil	Cleaned	No	Resolved
3/1/2024	Illicit Discharge	14	8.95	Citizen	Unknown	Cleaned	No	Resolved
3/2/2024	Discharge/Traffic Spill	90	48	WSDOT	Coolant		No	Resolved
3/4/2024	Illicit Discharge	14	52.56	Ecology	Pesticide	Cleaned	No	Resolved
3/5/2024	Discharge/Traffic Spill	509	2.45	WSP	Vehicle Fluids	Cleaned	No	Resolved
3/6/2024	Discharge/Traffic Spill	504	10.6	WSDOT	Diesel	Cleaned	No	Resolved
3/6/2024	Illicit Connection	534	8.14	WSDOT	Unknown	Cleaned	Yes	Resolved
3/7/2024	Discharge/Traffic Spill	2	143	WSDOT	Coolant	Cleaned	No	Resolved
3/7/2024	Discharge/Traffic Spill	90	283	WSDOT	Oil	Cleaned	No	Resolved
3/8/2024	Illicit Discharge	82	44.3	Citizen	Trash		No	Resolved
3/10/2024	Discharge/Traffic Spill	705	0	WSP	Transmission Oil	Cleaned	No	Resolved
3/11/2024	Discharge/Traffic Spill	405	26.75	City of Bothell	Vehicle Fluids	Cleaned	Yes	Resolved
3/11/2024	Discharge/Traffic Spill	518	3.5	Citizen	Unknown		No	Resolved
3/13/2024	Discharge/Traffic Spill	5	86	WSP	Oil	Cleaned	No	Resolved
3/13/2024	Discharge/Traffic Spill	12	165.5	Clean Harbors	Oil	Cleaned	No	Resolved
3/14/2024	Discharge/Traffic Spill	512	8.74	WSP	Fuel	Cleaned	No	Resolved
3/15/2024	Illicit Discharge	5	111	Citizen	Trash		No	Resolved

Detailed IDDE Issues Table

Date	Type of Discharge	State Route	Milepost	Discovery	Pollutant	Action Taken	G3 Notification to Ecology	Status
3/15/2024	Discharge/Traffic Spill	510	6.95	WSP	Oil	Cleaned	No	Resolved
3/16/2024	Discharge/Traffic Spill	5	211	WSP	Diesel	Cleaned	No	Resolved
3/19/2024	Discharge/Traffic Spill	3	7.15	Citizen	Unknown		No	Resolved
3/19/2024	Discharge/Traffic Spill	14	60	WSP	Oil	Cleaned	No	Resolved
3/19/2024	Discharge/Traffic Spill	18	6.6	WSP	Diesel	Cleaned	Yes	Resolved
3/19/2024	Discharge/Traffic Spill	90	277.19	WSP	Diesel	Cleaned	No	Resolved
3/20/2024	Discharge/Traffic Spill	24	14	Citizen	Manure		No	Resolved
3/24/2024	Discharge/Traffic Spill	5	162.72	TMS	Fuel		No	Resolved
3/25/2024	Illicit Connection	167	21.35	WSDOT	Unknown		Yes	Resolved
3/26/2024	Discharge/Traffic Spill	5	116	WSP	Diesel	Cleaned	Yes	Resolved
3/26/2024	Discharge/Traffic Spill	104	4.38	WSP	Diesel		No	Resolved
3/27/2024	Illicit Discharge	18	27.61	Contractor	Turbid Water	Cleaned	Yes	Resolved
3/28/2024	Discharge/Traffic Spill	101	5	Pacific County	Diesel	Cleaned	No	Resolved
3/29/2024	Illicit Discharge	99	1	Contractor	Turbid Water		Yes	Resolved
3/30/2024	Discharge/Traffic Spill	5	174.61	TMS	Oil	Cleaned	No	Resolved
3/31/2024	Discharge/Traffic Spill	16	0	WSP	Vehicle Fluids	Cleaned	No	Resolved
4/2/2024	Discharge/Traffic Spill	5	165	King County Metro	Vehicle Fluids	Cleaned	No	Resolved
4/3/2024	Discharge/Traffic Spill	101	177	WSP	Vehicle Fluids	Cleaned	Yes	Resolved
4/4/2024	Discharge/Traffic Spill	5	16.8	La Center City Works	Oil	Cleaned	No	Resolved
4/4/2024	Discharge/Traffic Spill	5	163	TMS	Oil	Cleaned	No	Resolved
4/6/2024	Illicit Discharge	16	0.3	Citizen	Trash		No	Resolved
4/9/2024	Discharge/Traffic Spill	5	120.88	WSDOT	Fuel	Cleaned	No	Resolved
4/9/2024	Illicit Discharge	27	55.15	Citizen	Paint		No	Resolved
4/10/2024	Discharge/Traffic Spill	5	146.63	South King County Fire	Diesel	Cleaned	No	Resolved

Detailed IDDE Issues Table

Date	Type of Discharge	State Route	Milepost	Discovery	Pollutant	Action Taken	G3 Notification to Ecology	Status
4/15/2024	Discharge/Traffic Spill	9	1.57	WSP	Fuel	Cleaned	No	Resolved
4/15/2024	Discharge/Traffic Spill	195	82.94	WSP	Oil	Cleaned	No	Resolved
4/16/2024	Discharge/Traffic Spill	12	380	WSP	Herbicide	Cleaned	No	Resolved
4/17/2024	Discharge/Traffic Spill	99	53.86	WSDOT	Transmission Oil	Cleaned	Yes	Resolved
4/18/2024	Illicit Discharge	405	18.11	Contractor	Turbid Water		Yes	Resolved
4/19/2024	Discharge/Traffic Spill	5	72.8	WSP	Diesel	Cleaned	No	Resolved
4/22/2024	Discharge/Traffic Spill	14	65	WSP	Fuel	Cleaned	No	Resolved
4/25/2024	Discharge/Traffic Spill	167	13.85	WSP	Fuel	Cleaned	Yes	Resolved
5/3/2024	Discharge/Traffic Spill	2	148	WSP	Oil	Cleaned	No	Resolved
5/9/2024	Discharge/Traffic Spill	99	27.28	Seattle PD	Oil		No	Resolved
5/14/2024	Discharge/Traffic Spill	3	59.37	WSP	Diesel	Cleaned	Yes	Resolved
5/14/2024	Discharge/Traffic Spill	5	77	WSP	Oil	Cleaned	No	Resolved
5/14/2024	Discharge/Traffic Spill	405	5.36	TMS	Vehicle Fluids	Cleaned	Yes	Resolved
5/15/2024	Discharge/Traffic Spill	14	24.5	WSP	Diesel	Cleaned	No	Resolved
5/15/2024	Discharge/Traffic Spill	203	15.11	Duvall Fire Dept	Diesel		No	Resolved
5/16/2024	Discharge/Traffic Spill	5	20	WSP	Oil	Cleaned	No	Resolved
5/16/2024	Discharge/Traffic Spill	5	133.23	WSP	Fuel	Cleaned	Yes	Resolved
5/16/2024	Discharge/Traffic Spill	99	0.94	WSDOT	Fuel	Cleaned	No	Resolved
5/18/2024	Discharge/Traffic Spill	167	26.3	WSP	Oil	Cleaned	No	Resolved
5/20/2024	Discharge/Traffic Spill	12	4	WSP	Fuel		No	Resolved
5/20/2024	Discharge/Traffic Spill	90	292.96	WSP	Fuel	Cleaned	No	Resolved
5/20/2024	Illicit Discharge	101	349.2	Citizen	Trash		No	Resolved
5/21/2024	Discharge/Traffic Spill	5	186.48	WSDOT	Oil		No	Resolved
5/22/2024	Discharge/Traffic Spill	14	25	WSDOT	Oil		No	Resolved

Detailed IDDE Issues Table

Date	Type of Discharge	State Route	Milepost	Discovery	Pollutant	Action Taken	G3 Notification to Ecology	Status
5/22/2024	Discharge/Traffic Spill	97	322	WSP	Diesel	Cleaned	No	Resolved
5/22/2024	Discharge/Traffic Spill	405	9.26	TMS	Hydraulic Fluid	Cleaned	No	Resolved
5/23/2024	Discharge/Traffic Spill	5	107.48	WSP	Oil	Cleaned	No	Resolved
5/24/2024	Discharge/Traffic Spill	160	1.82	WSP	Oil	Cleaned	No	Resolved
5/28/2024	Discharge/Traffic Spill	18	22	WSP	Vehicle Fluids	Cleaned	No	Resolved
5/28/2024	Discharge/Traffic Spill	90	264.3	WSP	Vehicle Fluids	Cleaned	No	Resolved
5/28/2024	Discharge/Traffic Spill	104	9.85	WSP	Diesel	Cleaned	Yes	Resolved
5/30/2024	Discharge/Traffic Spill	405	7.4	TMS	Oil	Cleaned	No	Resolved
5/31/2024	Illicit Discharge	405	8.89	Contractor	Concrete	Cleaned	No	Resolved
6/3/2024	Discharge/Traffic Spill	5	104.02	WSP	Vehicle Fluids	Cleaned	No	Resolved
6/4/2024	Discharge/Traffic Spill	181	11.3	Puget Sound Fire	Vehicle Fluids	Cleaned	Yes	Resolved
6/4/2024	Discharge/Traffic Spill	405	1	TMS	Diesel	Cleaned	Yes	Resolved
6/5/2024	Illicit Discharge	520	0.94	WSDOT	Diesel	Cleaned	No	Resolved
6/6/2024	Discharge/Traffic Spill	99	25	WSP	Paint	Cleaned	Yes	Resolved
6/7/2024	Discharge/Traffic Spill	510	15.28	WSP	Paint	Cleaned	No	Resolved
6/11/2024	Discharge/Traffic Spill	90	17.17	WSP	Gravel	Cleaned	No	Resolved
6/15/2024	Discharge/Traffic Spill	5	253	TMS	Oil	Cleaned	No	Resolved
6/17/2024	Discharge/Traffic Spill	101	269.32	WSP	Diesel	Cleaned	No	Resolved
6/17/2024	Discharge/Traffic Spill	302	11.3	Citizen	Paint		No	Resolved
6/17/2024	Discharge/Traffic Spill	307	3.08	WSP	Oil		No	Resolved
6/18/2024	Illicit Discharge	82	82	Contractor	Turbid Water	Cleaned	Yes	Resolved
6/18/2024	Discharge/Traffic Spill	90	2.07	WSDOT	Hydraulic Fluid	Cleaned	No	Resolved
6/22/2024	Discharge/Traffic Spill	518	2.5	Citizen	Unknown		No	Resolved

Detailed IDDE Issues Table

Date	Type of Discharge	State Route	Milepost	Discovery	Pollutant	Action Taken	G3 Notification to Ecology	Status
6/23/2024	Discharge/Traffic Spill	5	88.39	Thurston County	Milk	Cleaned	No	Resolved
6/25/2024	Discharge/Traffic Spill	522	11.1	Bothell Fire	Oil	Cleaned	No	Resolved
6/26/2024	Discharge/Traffic Spill	5	230	Skagit County	Diesel		Yes	Resolved
6/26/2024	Discharge/Traffic Spill	97	6.5	Citizen	Diesel	Cleaned	No	Resolved
6/27/2024	Discharge/Traffic Spill	405	5	TMS	Oil	Cleaned	No	Resolved
6/27/2024	Discharge/Traffic Spill	512	5.86	WSP	Fuel	Cleaned	No	Resolved
6/27/2024	Discharge/Traffic Spill	512	5.86	WSP	Diesel	Cleaned	No	Resolved
6/28/2024	Illicit Discharge	547	8.17	DFW	Turbid Water		Yes	Resolved

