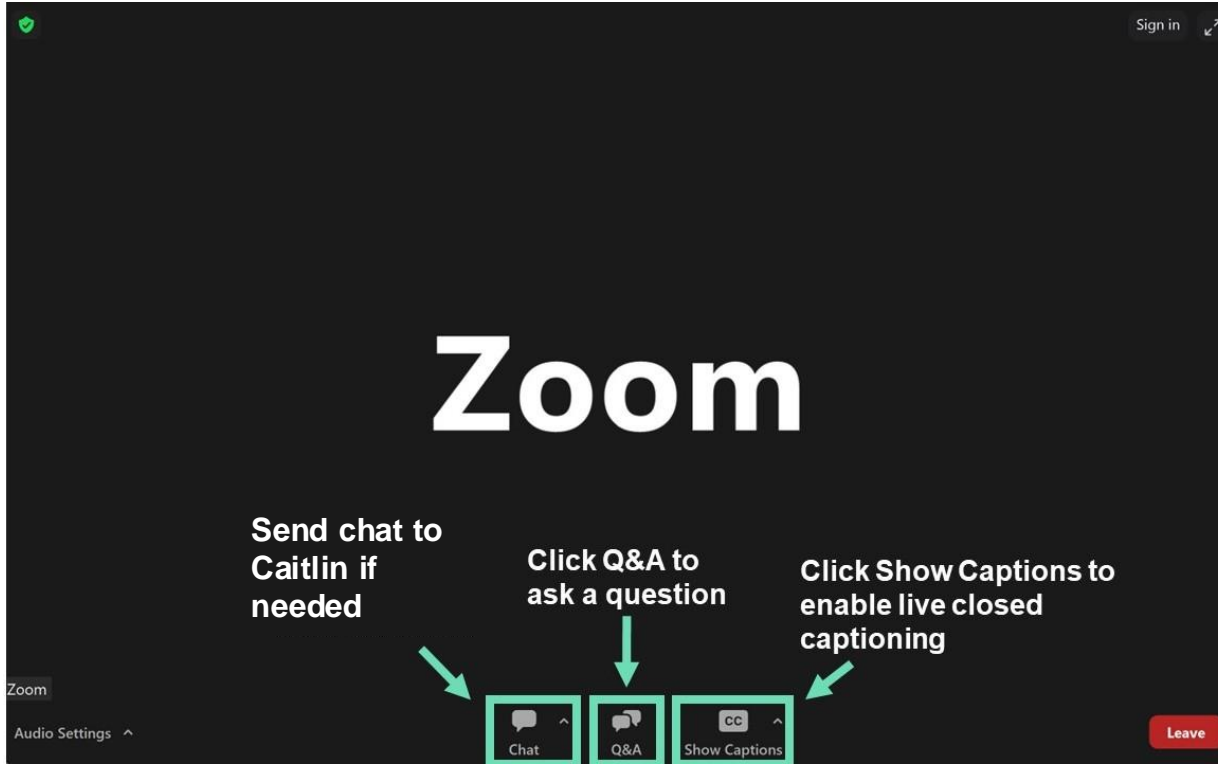


SR 167 Corridor Improvements Project

Project Update

Dec. 17, 2024

This meeting is being recorded. The recording will be sent to meeting registrants via email and posted on the project webpage.



Caitlin is our technical support

Please use the chat feature to message Caitlin or call him if you have any technical difficulties:

253-220-5053

Welcome & Introductions

- Matt DeGooyer, Northup Constructors Project Director
- Curtis Peterson, Northup Constructors Construction Manager
- Matt Gill, WSDOT Project Engineer
- Eugene Pike, WSDOT Assistant Project Engineer
- Craig Smiley, WSDOT Communications Lead
- Julie Moon, WSDOT Communications Support
- Jack Irwin, Northup Constructors Communications Lead
- Caitlin Soler, Northup Constructors Communications Support

Poll Question

Before we start, we want to hear from you

Project Overview

Project Update

- Project Schedule
- What's completed or in-progress? What's next?
- Upcoming SR 167 closures
- What you can expect during construction

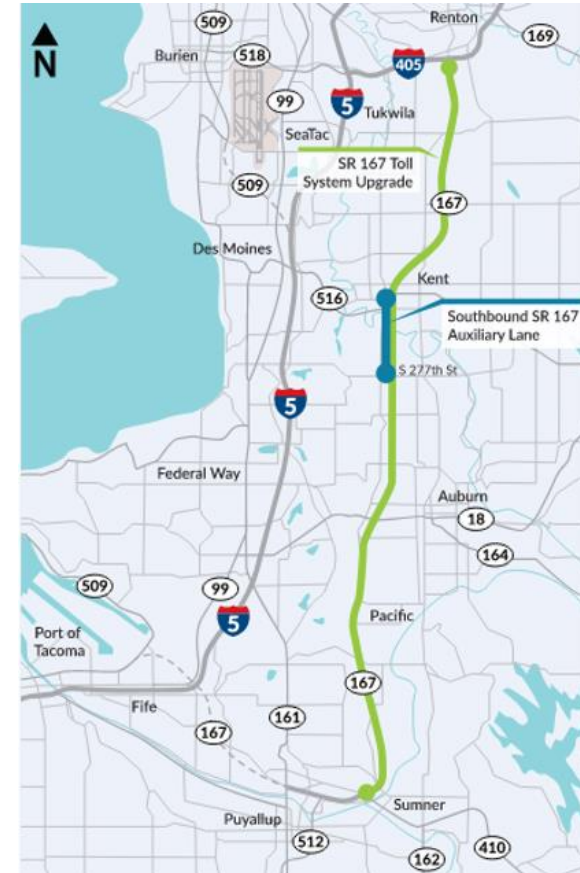
Keeping the Community Informed

- Outreach efforts
- Real-time travel map and app

Stay in Touch!

Q&A

- Upgrade the toll system on SR 167 from the existing HOT Lane system to a new Express Toll Lane (ETL) system to mirror the active system in place on I-405 (Bellevue to Lynnwood).
 - Implement photo tolling and destination pricing.
 - Install new toll rate signs consistent with the I-405 ETL system.
 - Restripe SR 167, including installation of double white line buffer stripes in select areas.
- Construct a new Southbound Auxiliary Lane in Kent between SR 516 and South 277th Street to improve traffic operations and smooth out heavy merging and diverging vehicles in this area.
- Install Toll Gantries and Sign Structures (cantilevers, full-span directional, full-span SR 167), as well as new static and dynamic signs throughout the corridor.
- Bridge deck overlay (one bridge deck).



- ✓ Contract Execution: August 2023
- ✓ Notice to Proceed: September 6, 2023
 - ✓ Design: September 2023 through July 2024
 - ✓ Early Subsurface Investigation: October 2023 through March 2024
 - ✓ Construction Start: April 2024
- Toll Gantries / Sign Structures – installation starts: January 2025
- Toll commencement: September 2025
 - Decommissioning start: September 2025
- Substantial completion: January 2026
 - Decommissioning complete: January 2026

Construction

- Constructed the tolling power and communications infrastructure on SR 167.
- Completed the SR 167 grind and overlay (mainline asphalt improvements).
- Constructed the southbound auxiliary lane in Kent.
- Constructed new maintenance pullouts to support new infrastructure.
- Drilled and poured over 60 sign structure foundations up and down SR 167.
- Installed over 8,000 lineal feet of new guardrail on SR 167.



Nighttime paving work on southbound SR 167.



Concrete column foundation to support a new toll gantry.

Construction

- Erect sign bridge and toll gantry structures.
- Install project static signs.
- Install three small retaining walls to support project infrastructure.
- Construct the bridge deck overlay and joint replacement.
- Open the southbound auxiliary lane.
- Restripe SR 167 to align with the new toll system.

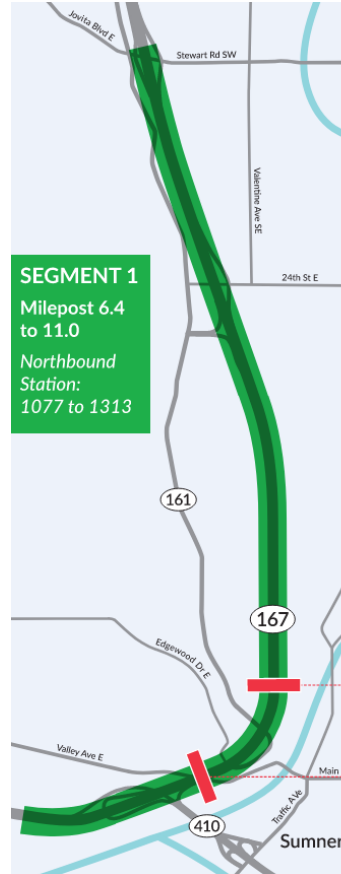
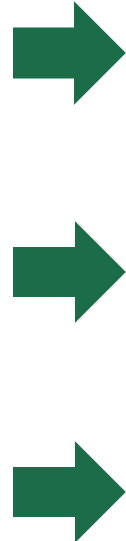
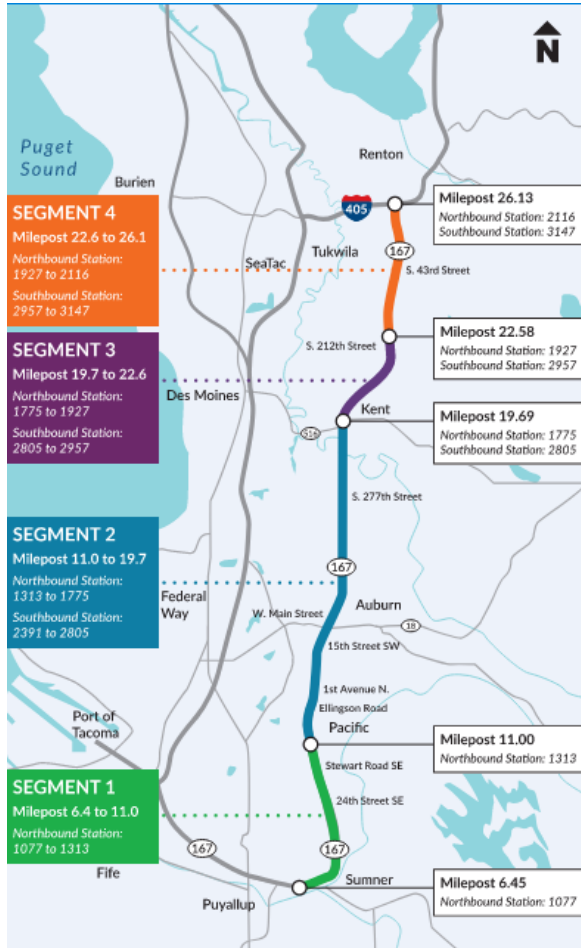
Tolling

- Install and test dynamic tolling signs.
- Support the Toll Vendor in hanging toll support brackets and equipment.

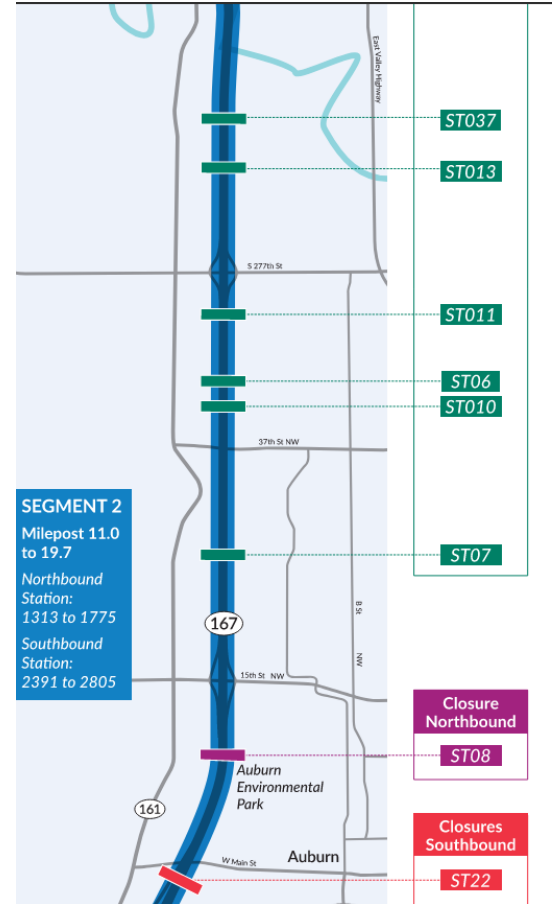
Decommissioning

- Decommission the old toll system and remove all tolling components.
-

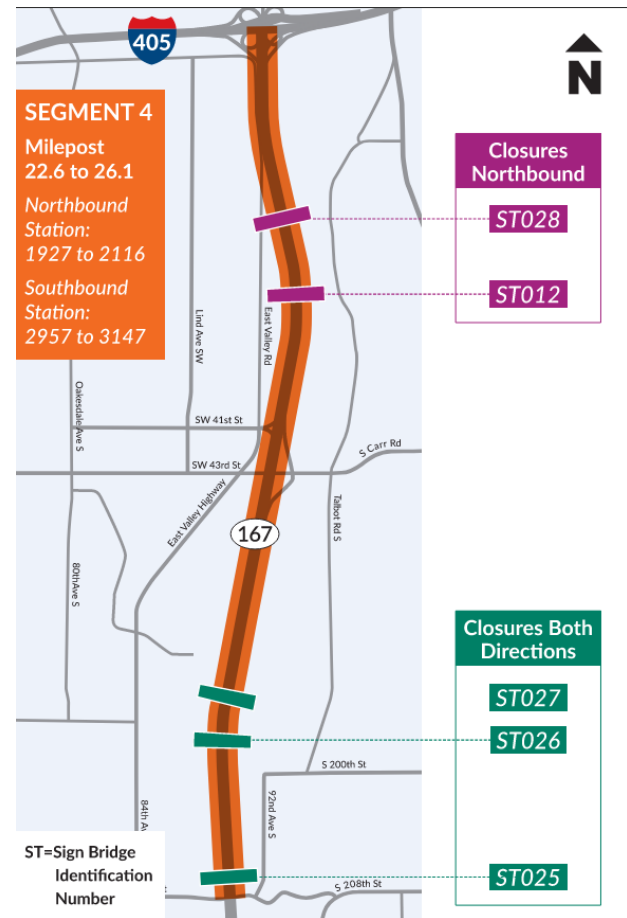
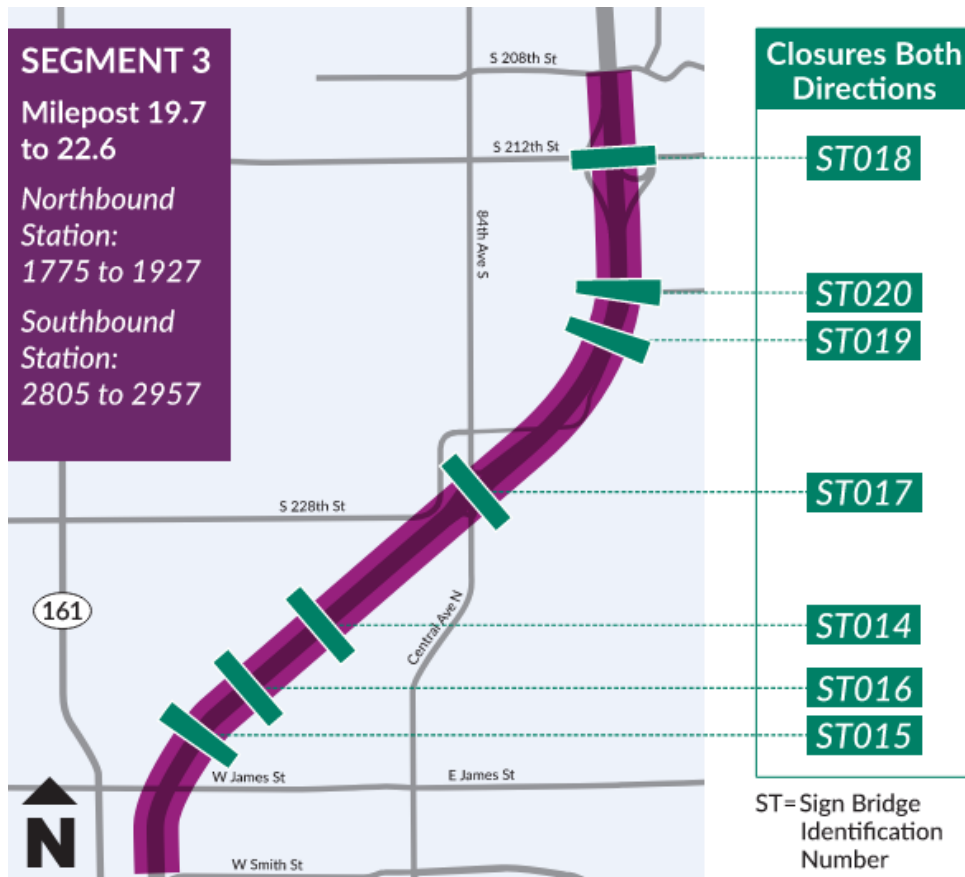
Project Segment Maps



- Closures Southbound**
- ST031
 - ST030
- ST=Sign Bridge Identification Number



Project Segment Maps





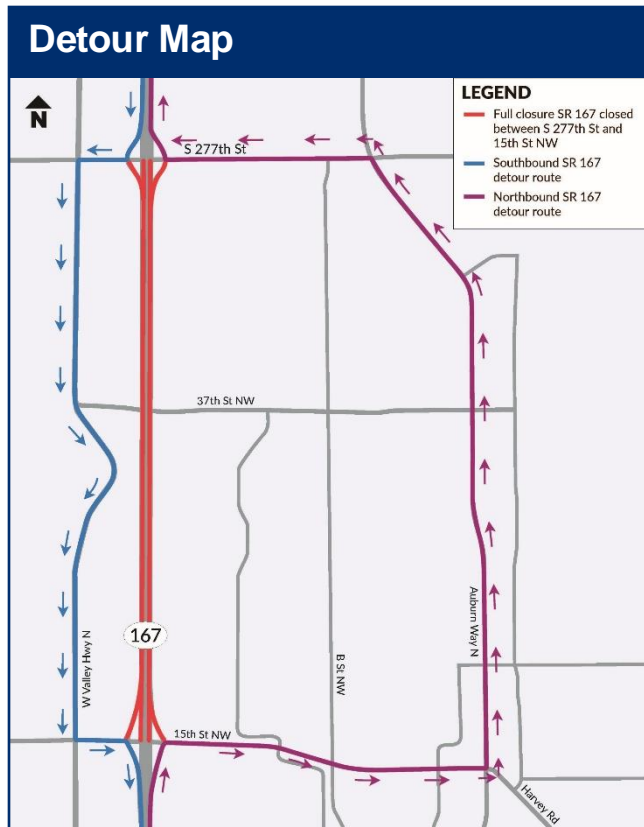
All southbound SR 167 lanes will be closed between 15th Street Northwest and 15th Street Southwest as early as:



Jan. 9 nighttime

- Setting structures over southbound SR 167.

**Note: closures are weather-dependent*



All lanes of SR 167 will be closed between South 277th Street and 15th Street Northwest as early as:



Jan. 23 nighttime

- Setting structures over northbound and southbound SR 167.

**Note: closures are weather-dependent*

- Different types of equipment and work result in different types of construction impacts:
 - Noise
 - Vibration
 - Nighttime lane, ramp, and SR 167 closures
 - Daytime shoulder closures of SR 167
- Expect to see crews both days and nights during weekdays. Crews will also utilize weekends to complete work.
- Crews will work typical day and/or night shifts, with day shifts being optimized to daylight hours when possible.
- Stakeholder engagement up and down the corridor with local agencies, counties, and transit entities.

- Road signs near work zones
- Mailed materials and information
- Email and website updates
- Quarterly project updates on Zoom



I405SR167Program@wsdot.wa.gov



425-456-8585 (*general program information*)
253-220-5053 (*project hotline*)



bit.ly/167-Corridor-Imp



Stay informed by subscribing to email updates.

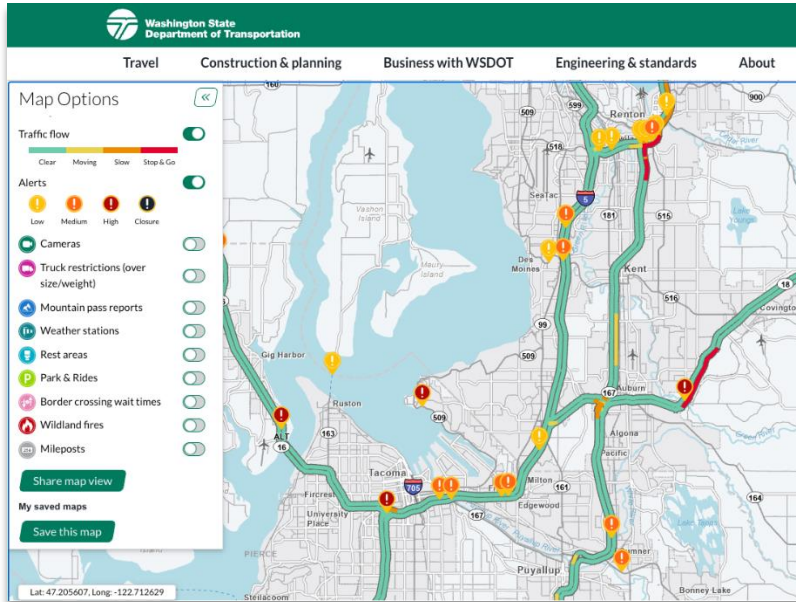
Updates include:

- Closures
- Nighttime or other potentially disruptive work
- Changes in work hours
- Construction milestones



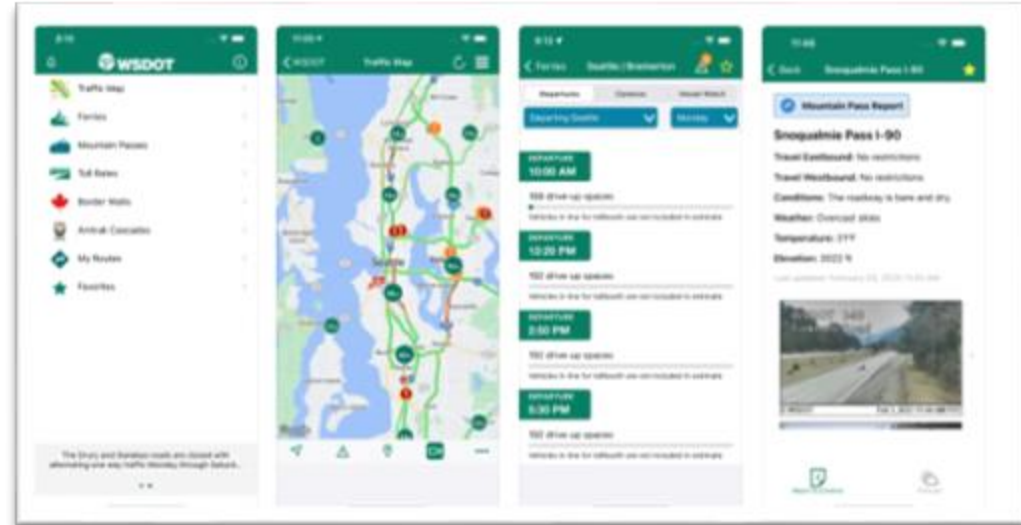
Real time travel map

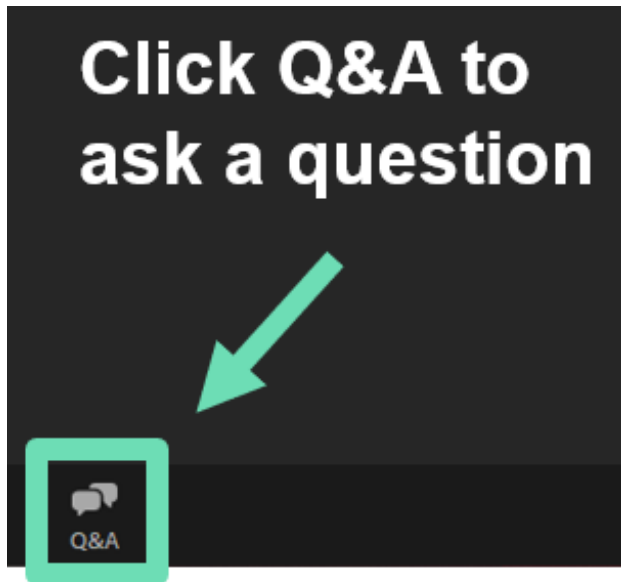
<http://wsdot.com/travel/real-time>



WSDOT mobile app

Search **WSDOT** in [Google play](#) or the [App Store](#) to download the **WSDOT** app.





Submit a question via Zoom Q&A window

- Keep questions focused on this project.
- Submit your questions as short, complete sentences (*this helps us read out the questions*).
- Questions specific to an individual situation can be difficult to answer here. After the meeting, you can call or email our team to get these questions answered.



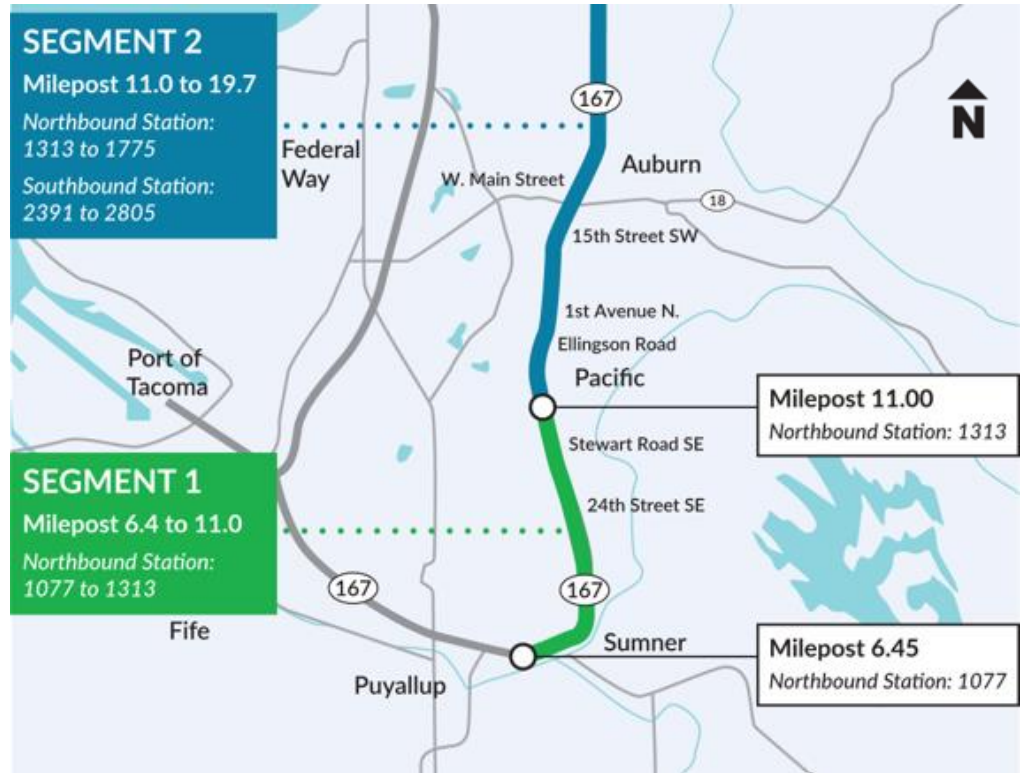
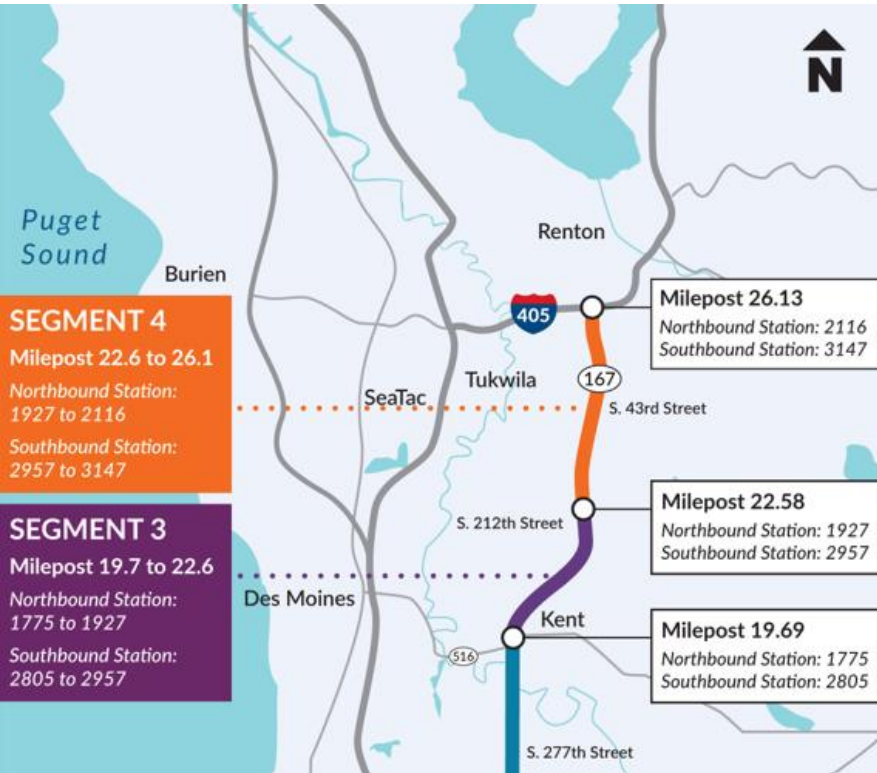
425-456-8585 (general program info.)
253-220-5053 (project hotline)



I405SR167Program@wsdot.wa.gov



bit.ly/167-Corridor-Imp



Thank you for
joining us today!