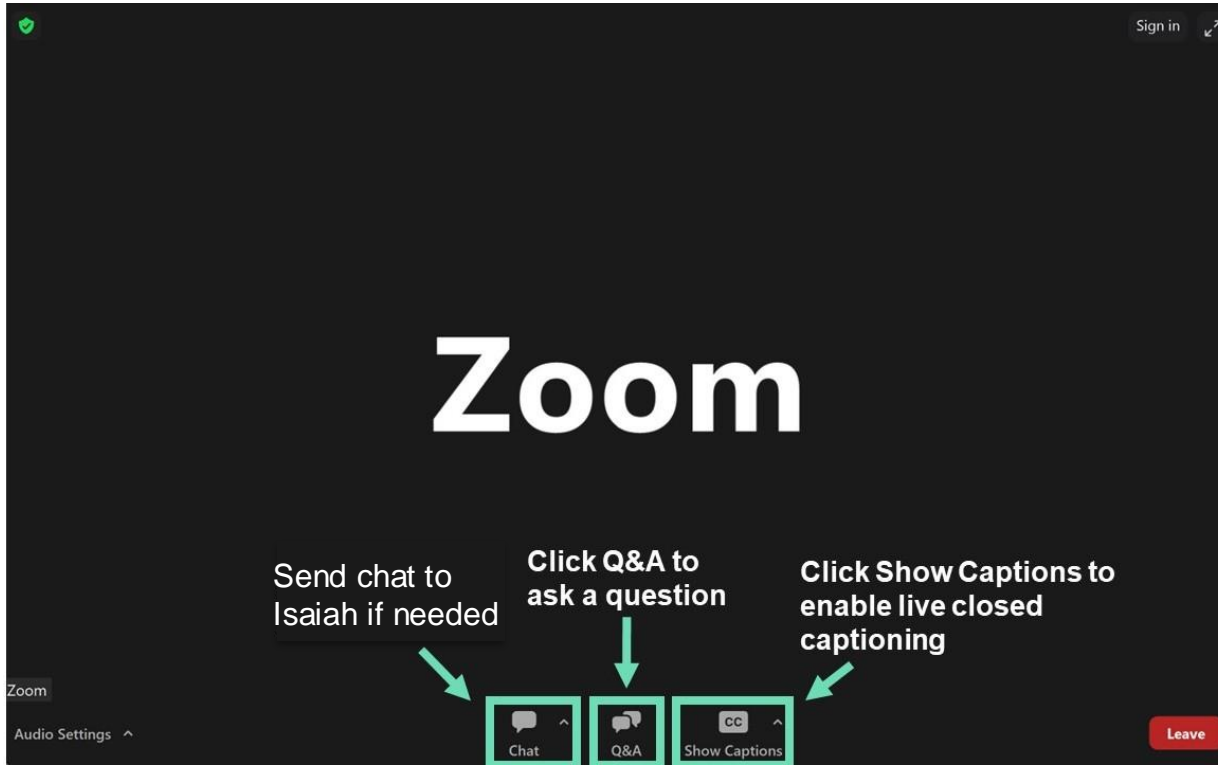


# **I-405/Brickyard to SR 527 Improvement Project**

**Quarterly public meeting**

**October 23, 2024**

# Zoom controls



Isaiah is our meeting host

Please use the chat feature to message Isaiah if you have any technical difficulties

# Agenda

- Welcome and Introductions
- Project overview
- Sound Transit updates
- Construction updates
- How to stay informed

# Welcome & introductions

- **Evelyn Pao**, WSDOT, Project Director
- **Lauren Penning**, WSDOT, Communications Lead
- **Pat Prendergast**, Skanska, Project Director
- **Sarah Perrino**, Sound Transit, Senior Project Manager
- **Julie Moon**, WSDOT Communications
- **Elizabeth Guevara**, Sound Transit, Stride Communications
- **Isaiah Honick**, Skanska Communications
- **Laura Halady**, Skanska Communications

---

# Poll question 1

---

# Project overview

# Project overview



Expand express toll lane (ETL) capacity.



Widen I-405 through the SR 522 interchange.



Add direct access ramps at the SR 527 and SR 522 interchanges.



Construct a new transit hub, build inline bus rapid transit (BRT) stations on I-405, and improve bus transit connections locally.



Improve connections for pedestrians and cyclists to transit and trails.



Improve local roadways and state routes.



Correct and repair fish barriers.

# *Stride*

*Bus Rapid Transit (BRT)*



# Program updates

## Key openings

- Lynnwood Link Extension
  - Start of Service on Aug 30th
  - Four new stations
  - Two will be future BRT stations:
    - Lynnwood Transit Center
    - Shoreline South/148th

## Upcoming procurements:

- Partnership with the City of Kirkland Shared Path & Arterial Projects – To Advertise Q4 2024
- Bus Base North - To Advertise Q4 2024



*Partners across the region gathered at the Lynnwood City Center for a ceremonious ribbon cutting for the start of service on the Lynnwood Link extension*

# Program status

## Stations, shelters, furnishings, systems:

- General Contractor Construction Manager (GCCM), Hoffman Construction Co., procured to complete design.
- Construction to begin in late 2025

## S3 – SR522/Bothell

- 100% Design Complete, Advertise in Q1 2025

## S1 & S2 – I-405

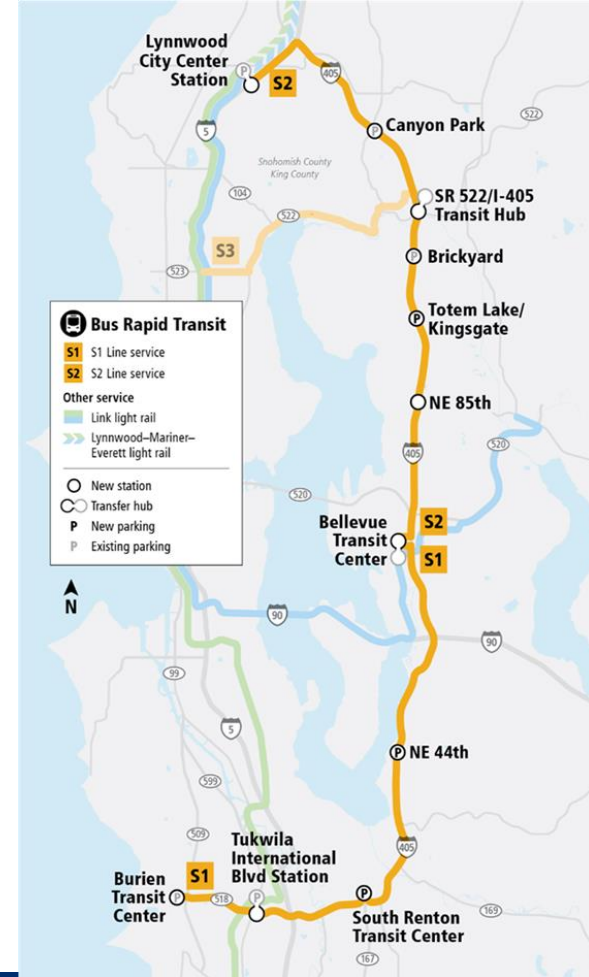
- 90% Design Complete on ST Delivered Work

## Battery Electric Bus Fleet

- Manufacturer Selected and Ordered

## Bus Base North

- Construction Advertised Q4 2024



# S2-Permanent Names

## S2 Line: Bellevue – Lynnwood

- Bellevue Transit Center
- Kirkland / NE 85th Station\*
- Totem Lake Station
- Brickyard Station
- Bothell / Woodinville Transit Center\*
- Canyon Park Station
- Lynnwood City Center Station



# S2 Station Names – Outreach Evaluation Summary

Shortlisted Permanent Name	Name Category: TC or Street	Avoids redundancy	Appropriate	Accessible	Intuitive	Easily implemented	Reflects geography	Brief and easy to remember	Public feedback	City feedback
All other S2 stations	✓	✓	✓	✓	✓	✓	✓	✓	✓	✓
Kirkland / NE 85th Station*	✓	✓	✓	✓	✓	✓	✓	✓	✓	✓
NE 85th Station	✓	✓	✓	✓	✓	✓	-	✓	-	-
Bothell / Woodinville Transit Center*	✓	✓	✓	✓	✓	✓	✓	-	✓	✓
North Creek Transit Center	✓	✓	✓	✓	✓	✓	-	✓	✓	✓



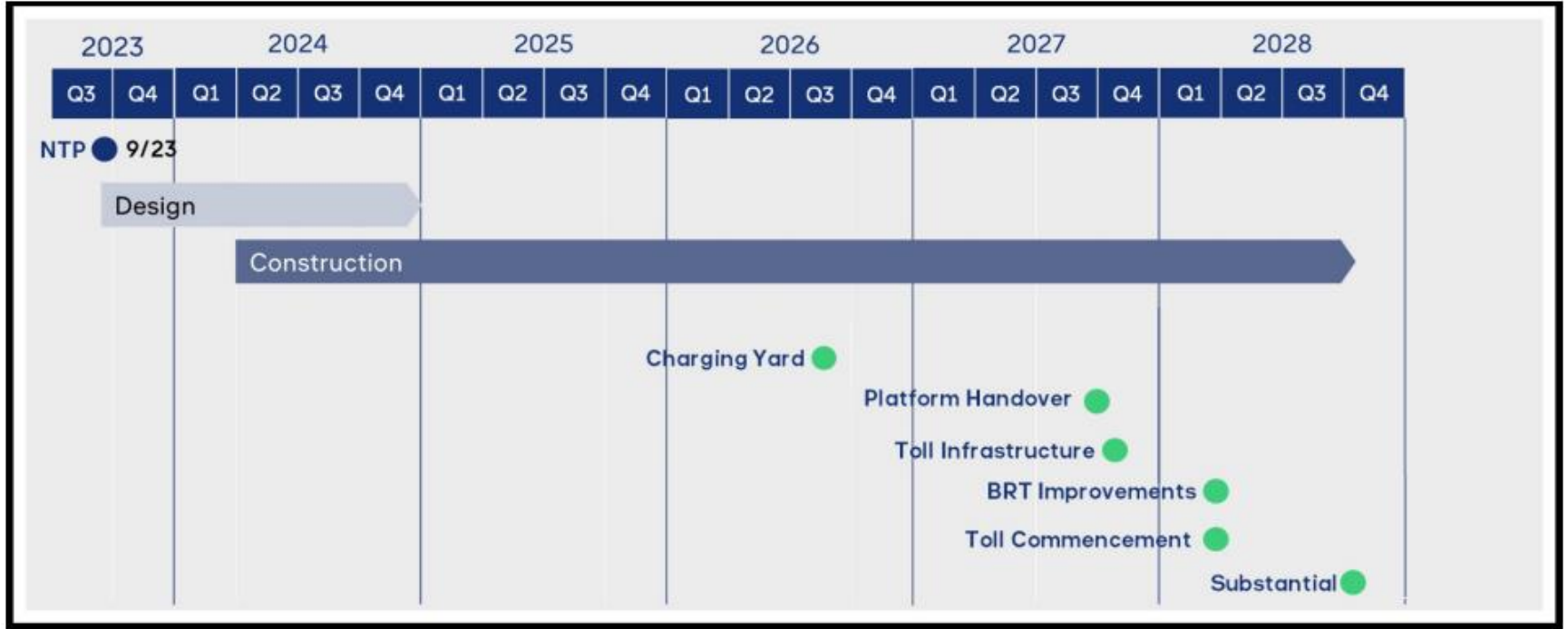
---

# Poll question 2

---

# Construction updates

# Construction milestones



# Work zone orientation:





# Recent work

**Northbound and southbound I-405 asphalt overlay**

**Northbound I-405 lanes**  
Communications network infrastructure from NE 160th street to SR 522



*Looking north on I-405 at NE 195th Street*

# Recent work

**Sammamish River  
Area/Woodinville Drive**  
Underground utility work and  
overhead lines removal

**I-405 southbound near  
Northeast 160th Street**

- Staging/bus station relocation for Brickyard Station work
- Traffic switch



*Looking west, crews work on the south side of the Sammamish River, next to Woodinville Drive*



# Current work

**Westbound SR 522 to  
northbound I-405 on-ramp**  
Mechanically Stabilized Earth  
(MSE) wall

**Northbound I-405 to  
eastbound SR 522 off-ramp**  
Soldier pile and tieback wall



*Looking north, soldier pile and tieback wall construction along northbound I-405*

# Current work

## Sammamish River/Woodinville Drive

- Ground improvement work
- Driller access for upcoming bridge foundation parts, including structural shoring and environmental protection of the Sammamish River
- Wall pile installation and ground improvements complete
- Bridge construction start – pile installation started July, bridge foundation starting in November



*Looking south, crews work between the Sammamish River and Woodinville Drive*

# Upcoming work

## Brickyard Station utility and foundation work

I-405 Northbound traffic shift

## Westbound SR 522 to Northbound I-405 on-ramp

- MSE complete/ramp shift in November
- Par Creek Fish Passage

## Sammamish River Trail Area/ Woodinville Drive

- Northbound I-405 to eastbound SR 522 ramp shoring and ground improvements
- Trail bypass starting November
- Driller access for bridge foundations to follow trail bypass



*Looking north, a section of the new Par Creek Fish Passage under SR 522*



# How we're reducing community impacts

---

## *Minimizing noise*

- Noisy work is completed during the day unless lane closures are required.
- During night work, noisy work is conducted earlier in the evening shift when possible.
- Equipment is selected for reduced noise levels.
- Vehicles use an ambient backup alarm versus the loud, audible backup alarms.
- Dumping trucks are prohibited from slamming tailgates while dumping.

---

## *Reducing exhaust*

- Equipment is prohibited from idling longer than 5 minutes.

---

## *Lowering light from work zones*

- Generators, light plants, and towers are set back from property lines and homes to minimize light and noise impacts on homes.

---

# Poll question 3

---

# How to stay informed



# How we're keeping communities and partners informed

- Quarterly project updates (Jan 2025)
- Mailed materials and information
- Briefings, meetings and events
- Email and website updates
- Poster and flyer distribution
- Project toolkits



Stay informed by subscribing to email updates.

Updates include:

- Closures
- Lane shifts
- Night or potentially impactful work
- Changes in work hours
- Construction milestones

# How to stay updated



## General project questions and email list:

[I405SR167Program@wsdot.wa.gov](mailto:I405SR167Program@wsdot.wa.gov)

Email us to be added to the Brickyard to SR 527 Project email list.



## Construction email:

[info@405Brickyard.com](mailto:info@405Brickyard.com)



## Visit our website:

<https://bit.ly/BY-to-SR-527>



## Call our construction hotline:

425-354-3232

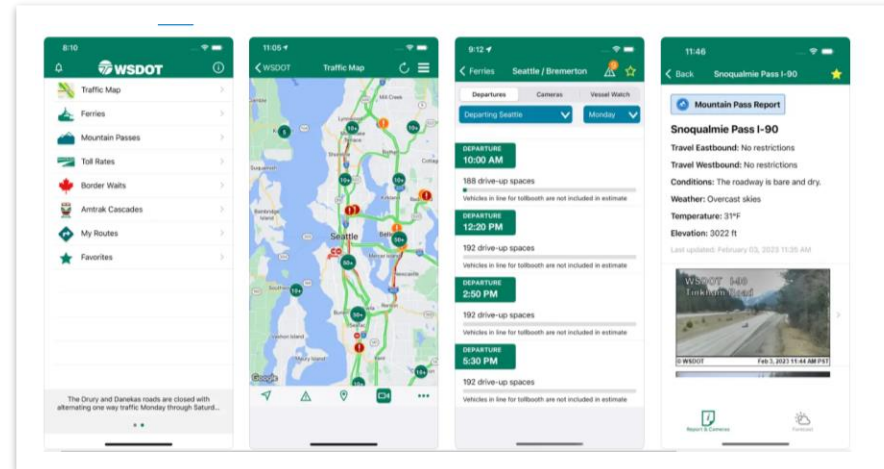
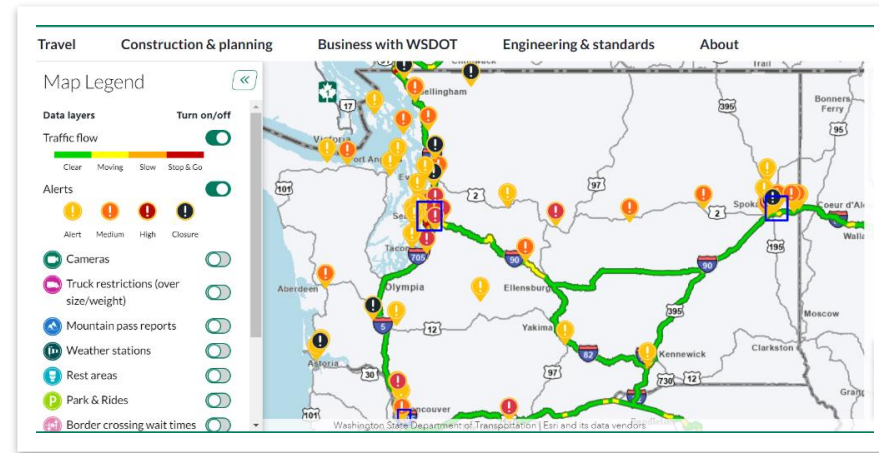
Monitored weekdays, 8 a.m. to 5 p.m.



Scan the QR code  
with your phone to  
visit our website.

# For the most up-to-date travel impacts

- Visit our real-time travel map: <http://wsdot.com/travel/real-time>
- Download the WSDOT mobile app: Just type in the term "WSDOT" in [Google play](#) or [the App Store](#) to download the WSDOT app.



# Questions, comments, or concerns?

## Submit a question via Zoom Q&A window

- Keep questions focused on this project
- Submit your questions as short, complete sentences
- We will answer as many questions as possible by 12:00 p.m.

Questions specific to an individual situation can be difficult for us to answer now. You can call or email our team after the meeting to get these types of questions answered. We are here to help!

425-456-8585 (general program info.)

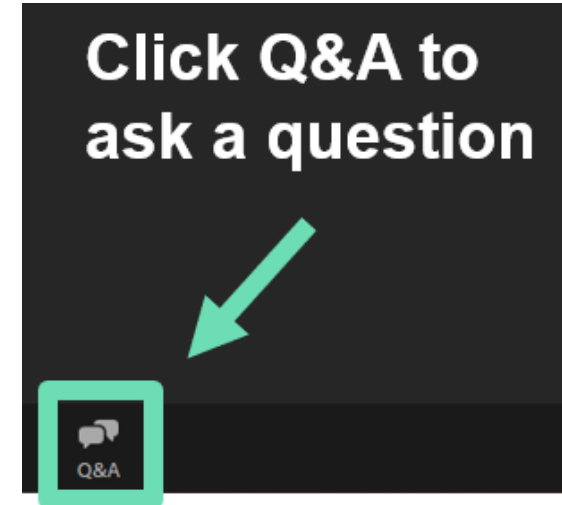
425-354-3232 (project hotline)



[I405SR167Program@wsdot.wa.gov](mailto:I405SR167Program@wsdot.wa.gov)



<https://bit.ly/BY-to-SR-527>



# Questions?