

# Montlake Project

## Monthly Construction Update

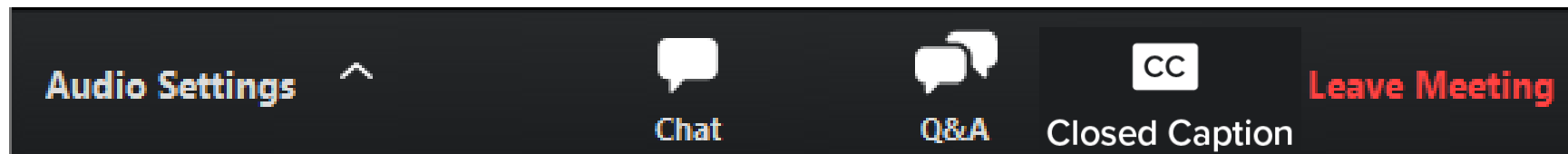
July 17, 2024

# How to participate in the webinar

**All attendees are muted.**  
To adjust your audio settings during the meeting, click on **Audio Settings**.



Please use the **Q&A window** to ask questions or offer comments.



**CHAT** is disabled during the presentation. Please communicate with the team through the **Q&A window**.



Turn on **closed captions** if you want to view captions during the meeting. They are available in English only.





# Agenda

- Current and upcoming work
- How to stay informed
- Comments and questions





# Major project elements

The Montlake Project will improve transportation for motorized and nonmotorized travel along the SR 520 corridor, including:

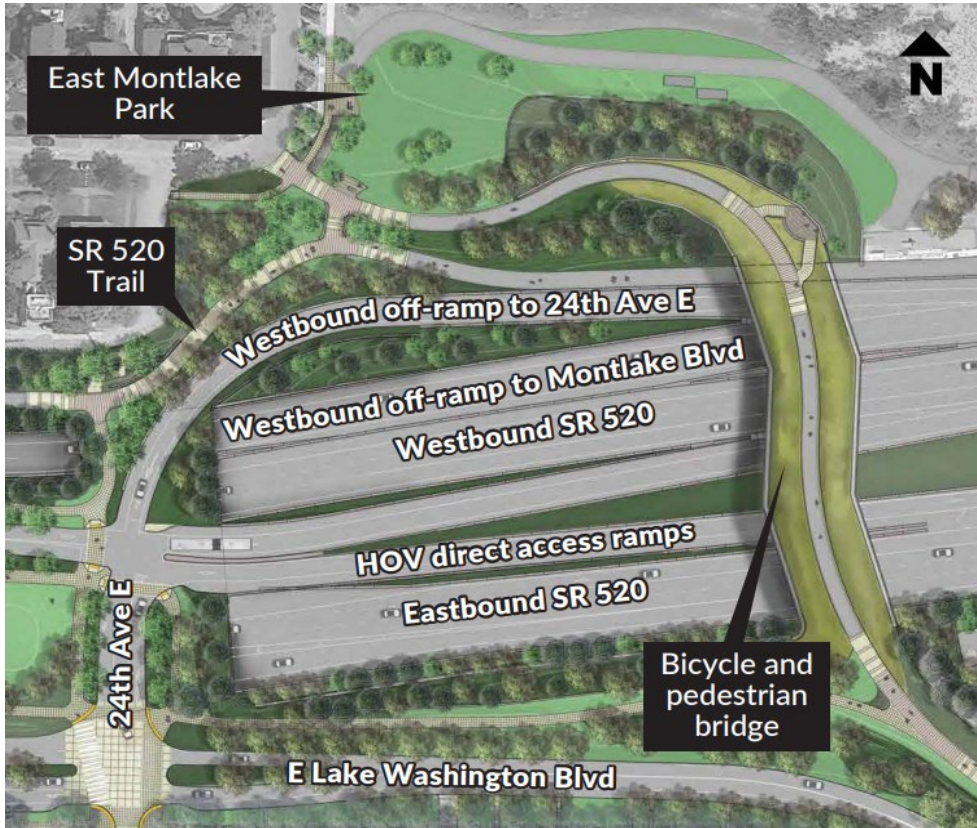
- A new eastbound bridge
- Montlake lid
  - HOV and bus lane
  - On and off ramps
- Bicycle and pedestrian bridge and connecting pathways





# Project milestones: HOV ramp

September 16, 2024 – HOV direct access ramps will open to the public.



HOV direct access ramps work zone



HOV direct access ramps (May 23)



# Project milestones: Pedestrian Paths

September 2024 – Complete sidewalks, trails, and landscaping on the Montlake lid and open it to the public.



Montlake lid – west end (May 23)



# Project milestones: Bicycle and Pedestrian Bridge

July 2024 – Bicycle and Pedestrian Bridge over SR 520 landscaping will be complete.



Visualization of bicycle and pedestrian bridge



Bicycle and pedestrian bridge deck (June 26)



# Project milestones: Old Canal Reserve

Work to be completed includes, pathways, landscaping and electrical by third party



Old Canal Reserve – east facing (May 23)



# Project milestones: Pedestrian Tunnel

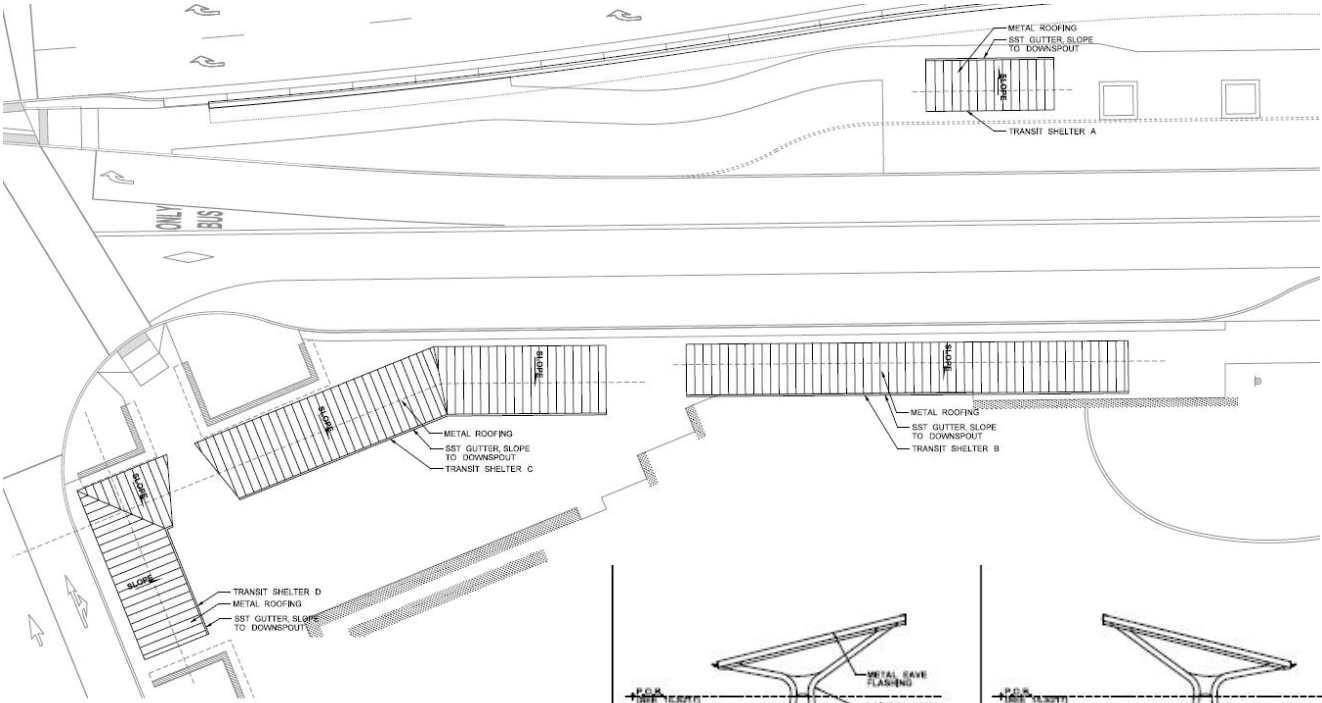
September 2024 – The Bill Dawson Trail will be connected to the pathway on the east and west sides of Montlake Boulevard through the shared-use tunnel. The trail will extend to the Bicycle and Pedestrian Bridge.



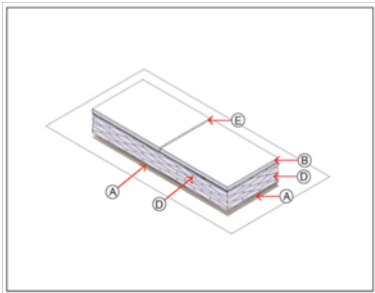
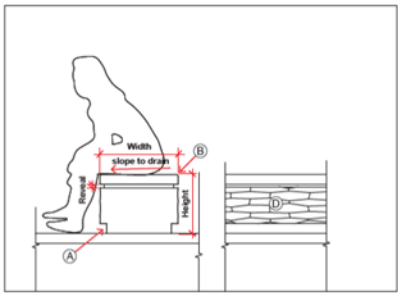
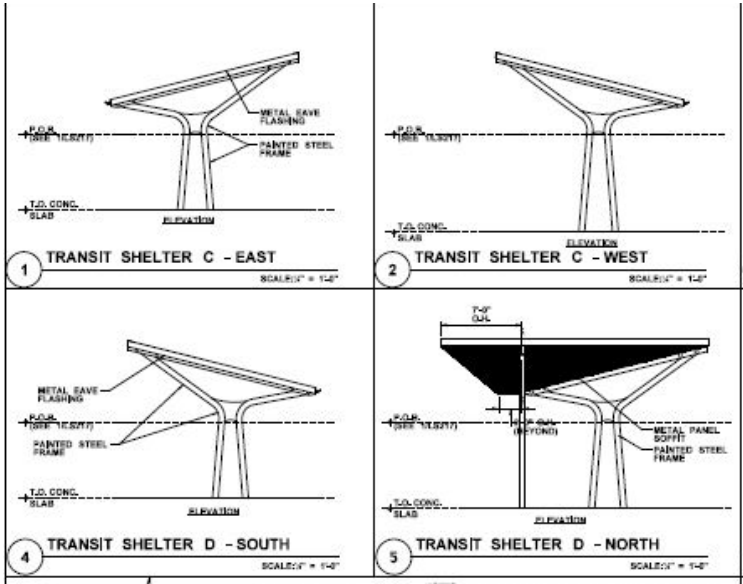
West entrance to the tunnel under Montlake Boulevard  
(May 23)



# Project Milestone: Lid Transit Canopies



1 TRANSIT SHELTER ROOF PLAN





# Project Milestones: Landscape



Montlake Boulevard



Lake Washington Blvd.

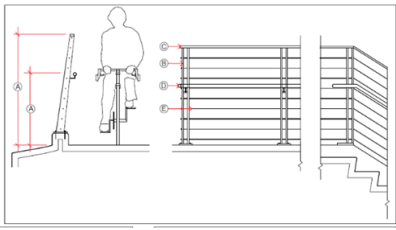


24th Ave & HOV lighting

*Bicycle and pedestrian bridge construction*



SR520 Lighting



SR520 Railing



SR520 Bench



Achillea spp. (Yarrow)  
3'-4' ht.



Agropyron spicatum (Bluebunch  
Wheatgrass) 1.5'-4' ht.



Allium cernuum (Nodding  
Onion) 1-3' ht.



Clarkia amoena (Godetia 'Farewell to Spring')  
0.5-3' ht.



Coreopsis lanceolata (Lance-leaf Coreopsis)  
2' ht.

Note: Examples of fixtures only. Items may vary.



# Upcoming closure: Montlake Boulevard



## July 19 - 22

- Montlake Boulevard E closed in both directions between E Louisa and E Hamlin streets.
- Lake Washington Boulevard E closed in both directions between Montlake Boulevard E and East Foster Island Road
- All ramps to and from SR 520 to Montlake Boulevard



# Project completion-Montlake to Roanoke

Work to be completed includes signal conduit, Montlake Plaza, and final paving.





# Upcoming closure: SR 520 & SR 520 Trail



## July 26 - 29

- SR 520 Mainline closed in both directions between I-5 and 92nd Ave NE on the Eastside
- All ramps to and from SR 520 to Montlake Boulevard
- SR 520 Trail across Lake Washington



# Project completion –Traffic Congestion

- 48,000 approx. vehicles travel north and south per day along Montlake Blvd.
- Montlake Bridge closures
- Signal timing in temporary configuration
- Traffic movements





# Remaining project closures:

Graham coordinates project closures with the City of Seattle and Washington State Department. Closures are reviewed to determine impacts to the travelling public throughout the city taking into consideration local events and holidays.

July 2024						
Monday	Tuesday	Wednesday	Thursday	Friday	Saturday	Sunday
1	2	3	4	5	6	7
Roanoke Full Closure - TCP 98			Independence Day			
8	9	10	11	12	13	14
					Seattle to Portland Bike Ride	
15	16	17	18	19	20	21
				Bite of Seattle		Seafair Triathlon
22nd Ave. Closure - TCP 106					Montlake Closure #14	
22	23	24	25	26	27	28
					EB & WB - WDX, Wearing Coarse, Light Drivers	
North ST. Closure - TCP 109						
29	30	31				

August 2024						
Monday	Tuesday	Wednesday	Thursday	Friday	Saturday	Sunday
			1	2	3	4
					Blue Angels Air Show	
5	6	7	8	9	10	11
24th Ave. Closure - TCP 109					EB & WB - Commissioning #1 (Provide scope to WSDOT)	
					Obliteride	
12	13	14	15	16	17	18
					Montlake Closure #15	
19	20	21	22	23	24	25
					Seahawks	
					EB & WB - Commissioning #2	
26	27	28	29	30	31	
					UW Football	



# Remaining project closures:

September 2024						
Monday	Tuesday	Wednesday	Thursday	Friday	Saturday	Sunday
					1	
					Labor Day Weekend	
2	3	4	5	6	7	8
Labor Day Weekend					UW Football	Seahawks
9	10	11	12	13	14	15
					Montlake Closure #16	
					UW Football (Lumen Field Game)	
16	17	18	19	20	21	22
					UW Football	Seahawks
23	24	25	26	27	28	29
					EB & WB - Commissioning #3	
30						

October 2024						
Monday	Tuesday	Wednesday	Thursday	Friday	Saturday	Sunday
	1	2	3	4	5	6
					UW Football	Seahawks
7	8	9	10	11	12	13
			Seahawks		EB & WB - Commissioning #4	
14	15	16	17	18	19	20
21	22	23	24	25	26	27
						Seahawks
28	29	30	31			

Schedule is pending coordination with third party agencies and is subject to change.



# What to expect: Noise and vibration

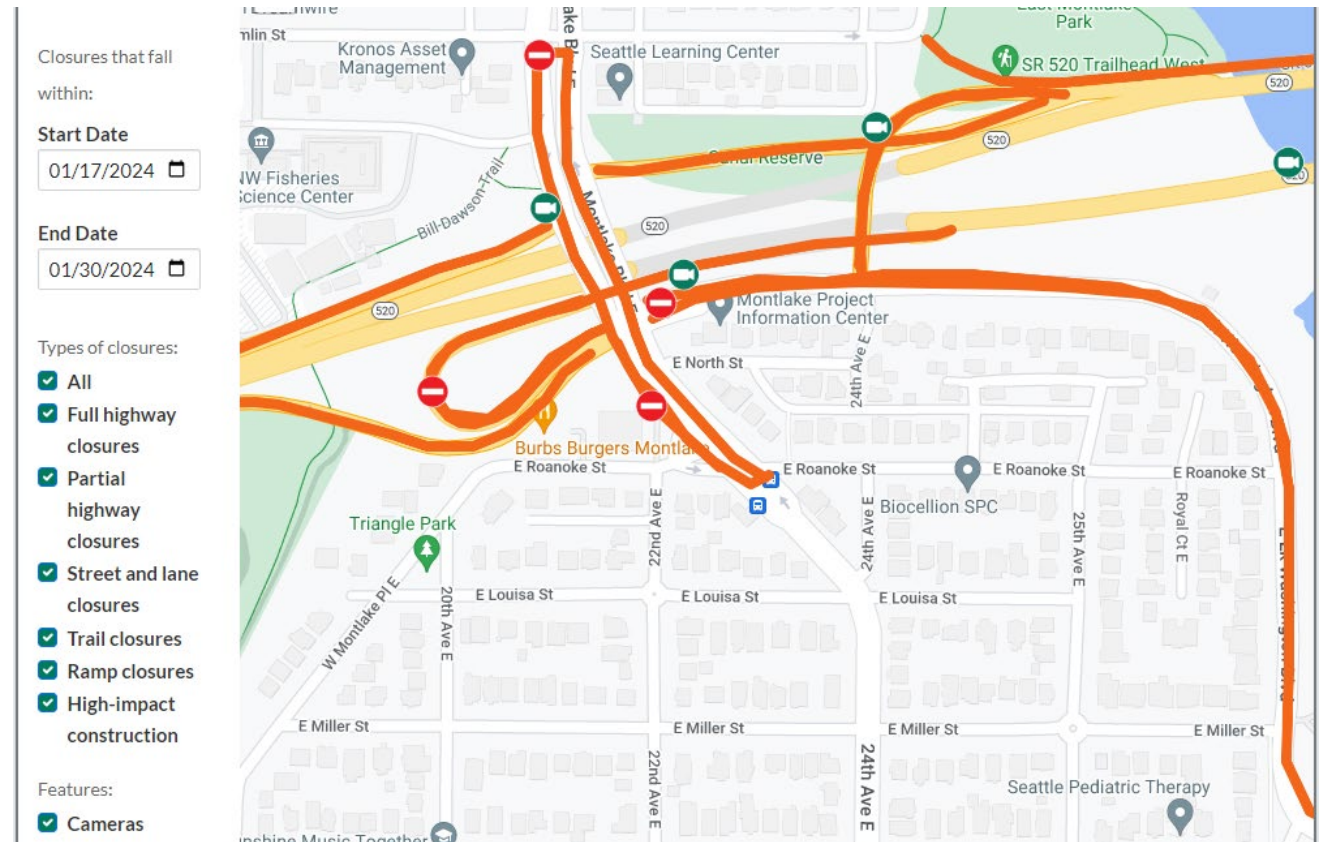
- Different types of equipment result in different levels and kinds of noise and vibration.
- Electronic noise and vibration meters record levels throughout the project area.
- Vibration monitors collect data in the field and immediately alert the project team when readings are outside the set tolerances.
- Nighttime construction has stricter rules for noise levels and equipment use.
- We've received a Major Public Project Construction Noise Variance (MPPCNV) permitting higher than normal decibel levels between the hours of 10 p.m. and 7 a.m.
- Crews may work 24 hours a day, seven days a week throughout construction.
- Typical work hours for the loudest work:
  - 7 a.m. to 10 p.m. weekdays
  - 9 a.m. to 10 p.m. weekends and holidays
  - Impact pile driving has stricter work hours and will occur:
    - 8 a.m. to 5 p.m. weekdays
    - 9 a.m. to 5 p.m. weekends
- Independent noise monitors will be present for night work to ensure compliance with specified noise levels.

Our 24-hour hotline, **206-775-8885**, is the best way to report noise and vibration concerns and to have questions addressed in the moment.

Visit the SR 520 Construction Corner to view the MPPCNV, read up on the allowable nighttime decibel levels, or read our weekly noise report:  
[www.sr520construction.com/ManagingConstructionEffects](http://www.sr520construction.com/ManagingConstructionEffects)

# How to stay informed

- Call our 24-hour hotline: [206-775-8885](tel:206-775-8885)
- Email us with questions: [sr520bridge@wsdot.wa.gov](mailto:sr520bridge@wsdot.wa.gov)
- Visit the Montlake Project website: [https://bit.ly/520montlake\\_program](https://bit.ly/520montlake_program)
- Visit the SR 520 Construction Corner to learn more about upcoming construction: [www.sr520construction.com](http://www.sr520construction.com)
- Follow us on Twitter: [@wsdot\\_520](https://twitter.com/wsdot_520)
- Sign up to receive our email updates at [sr520bridge@wsdot.wa.gov](mailto:sr520bridge@wsdot.wa.gov)
- Watch construction in “real time” on construction cameras: <http://bit.ly/520cams>
- Participate in our online meetings and events



*Example of Construction Corner map*





Comments and questions?