

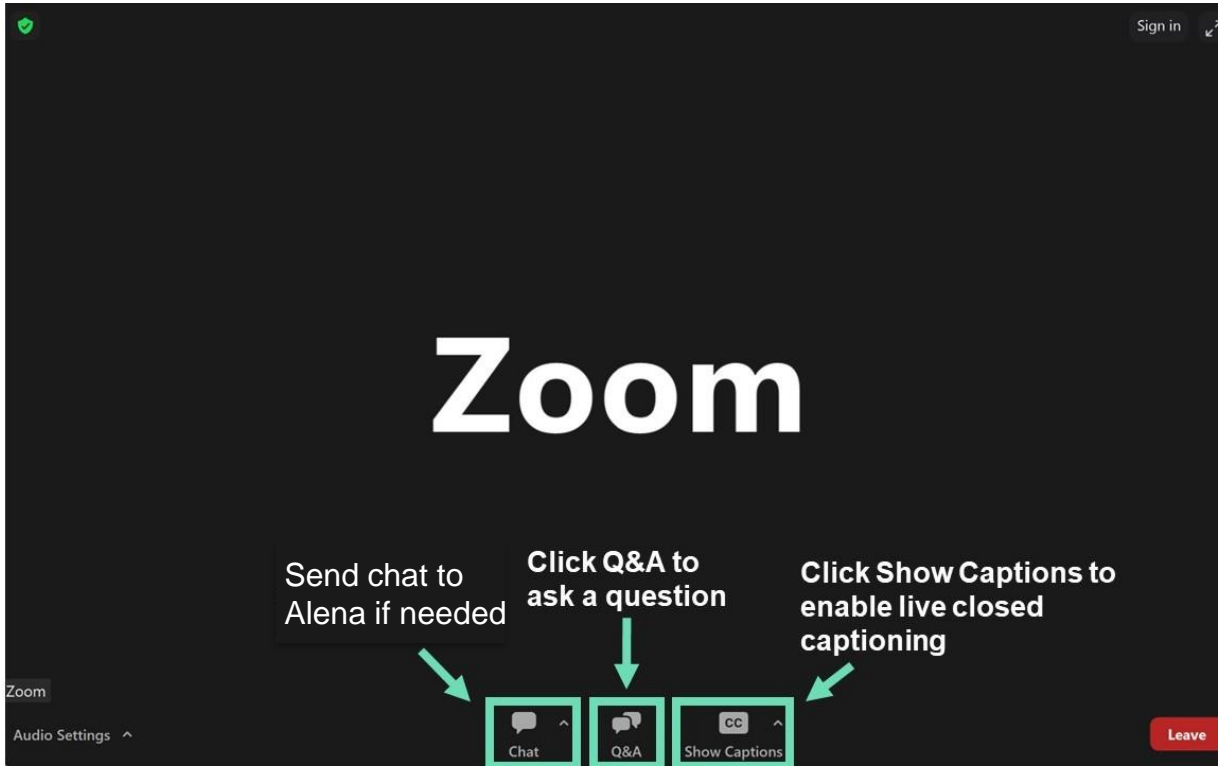
I-405/Northeast 85th Street Interchange and Inline BRT Station Project

Construction updates

June 18, 2024

This meeting is being recorded. The recording will be sent to meeting registrants via email and posted on the project webpage.

Zoom controls



Alena is our meeting host

Please use the chat feature to message Alena or call her if you have any technical difficulties:

425-224-2423

Welcome & introductions

- **Darcy Edmunds**, Meeting Facilitator, Graham Communications
- **Chris Cooper**, Graham Construction Management
- **Steven M. Beadle, PE**, WSDOT Project Engineer
- **Paul Cornish**, Sound Transit Strategic Projects Director
- **Elizabeth Guevara**, Sound Transit Community Engagement Consultant
- **John Starbard**, City of Kirkland Deputy Director of Public Works Department
- **Diana Barreto**, WSDOT Communications Lead
- **Alena Rinehardt**, Meeting Support, Graham Communications
- **Jack Irwin**, Meeting Support, Graham Communications

Agenda

Project overview and benefits

Bus Rapid Transit (BRT)

Construction updates

- Schedule (2024 – 2026)
- What's completed or in progress? What's next?
- What you can expect during construction

Keeping the community informed

- Outreach efforts
- Real-time travel map and app

Stay in touch!

Questions?

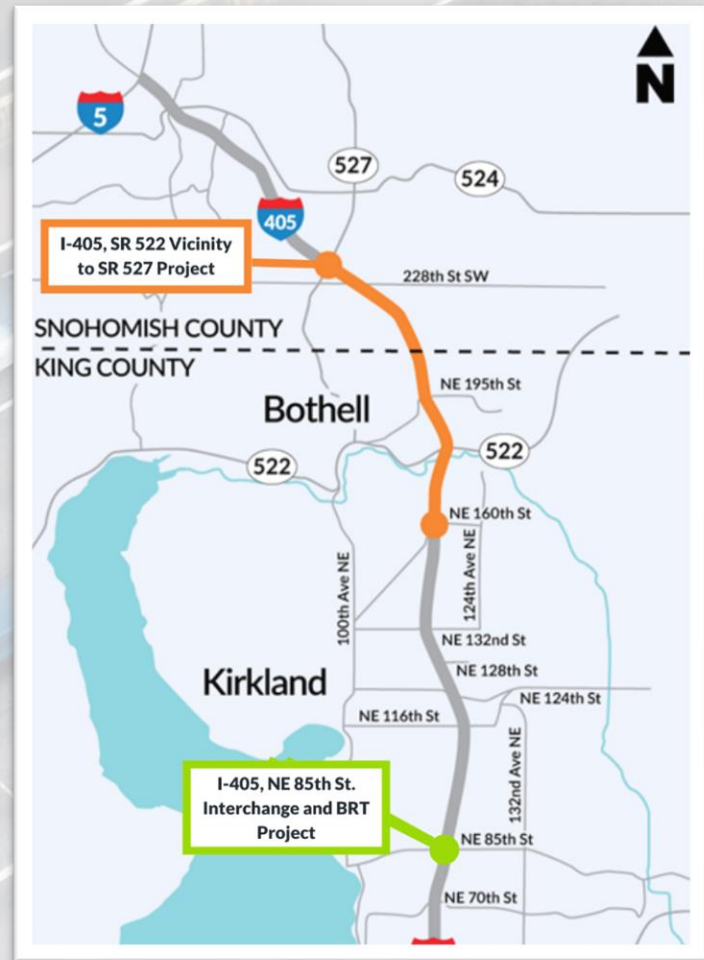
Poll questions

Before we start, we want to hear from you

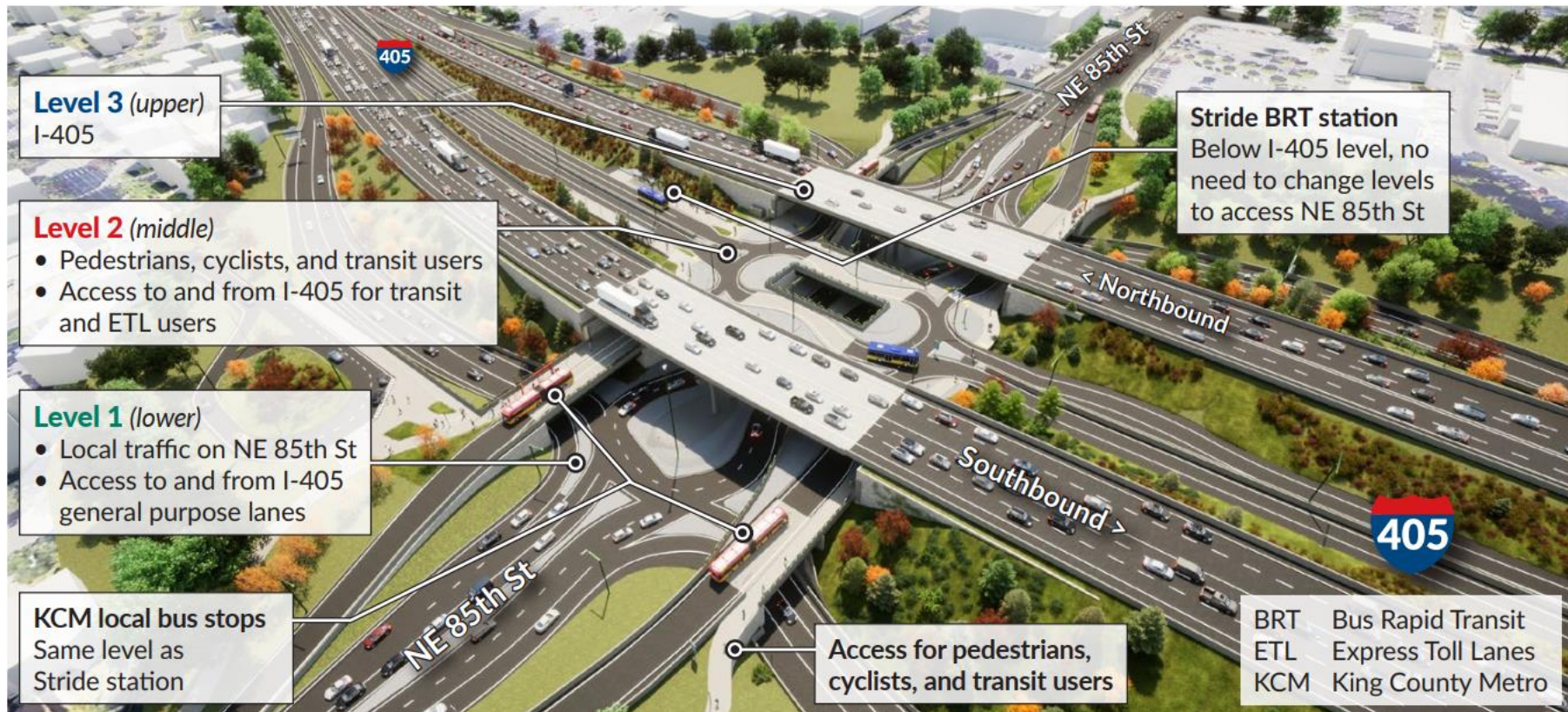
Project overview



Coordinated Projects on I-405 Corridor



The future of Northeast 85th Street



Northeast 85th Street and I-405



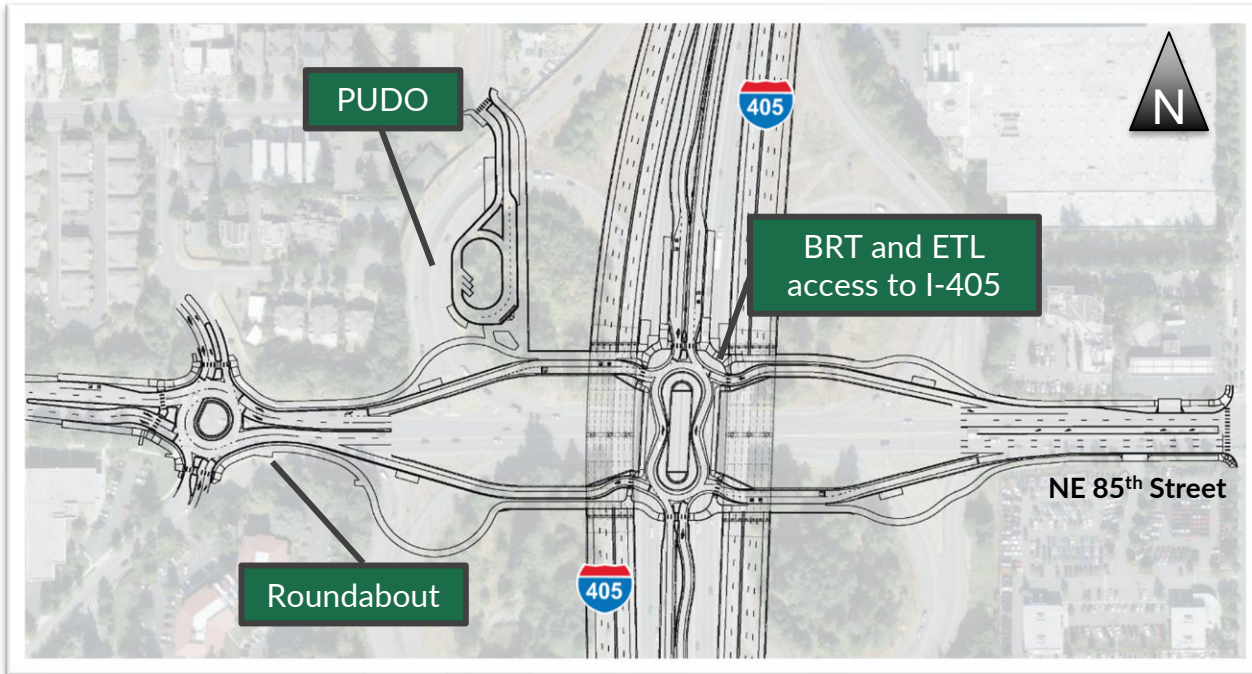
Level One

- Below existing Northeast 85th Street elevation
- Passenger and truck traffic

Level Three

- At existing I-405 elevation
- Freeway traffic

Bus Rapid Transit, Express Toll Lanes, and Pedestrians



The new middle level is at the existing NE 85th St elevation and includes:

- Access for Bus Rapid Transit (BRT), Express Toll Lanes (ETL)
- The Pick-Up-Drop-Off (PUDO)
- New roundabout
- Access for people who walk, bike, or roll

Stride

Bus Rapid Transit (BRT)

Program updates

Key openings

- 2 line
 - Bellevue Downtown Station
- Lynnwood Link Extension
 - August 30
- I-405/Brickyard to SR 527 groundbreaking

Active & upcoming procurements:

- Fleet and systems
- Stations, shelters, furnishings, systems
- Bus Base North

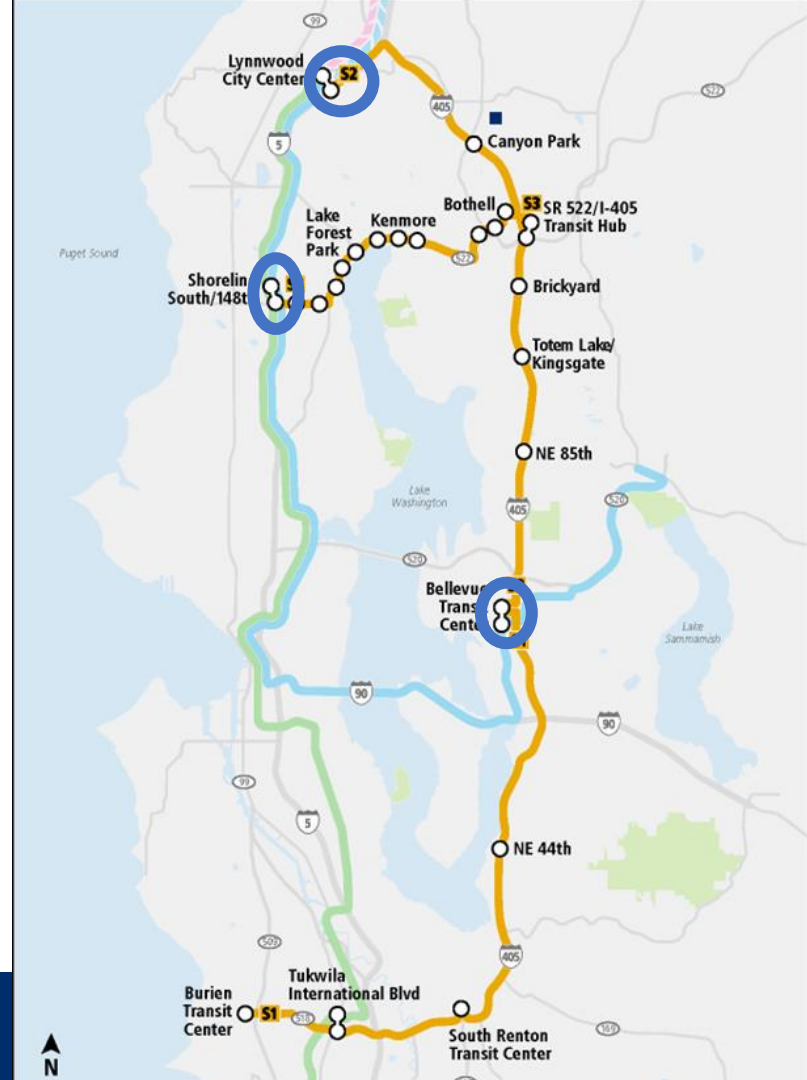


Partners across the region gathered at the Brickyard Park & Ride for a ceremonial groundbreaking of the I-405/Brickyard to SR 527 Improvement Project in Bothell.

Ridership

Approximate daily boardings by 2029

- S1 Line (Bellevue-Burien)
 - 8,000
- S2 Line (Lynnwood-Bellevue)
 - 10,000
- S3 (Shoreline-Bothell)
 - 6,000



Construction updates

Project schedule

Schedule updated June 2024. Subject to change.

Near completion:
December 2026

Design

February 2023 – June 2024



★ We are here

Early Construction

August 2023 – January 2024



All traffic to new alignments

Phase 5



Phases 3 and 4

85th traffic to Direct Access Alignment



Phase 2

I-405 traffic on new alignment



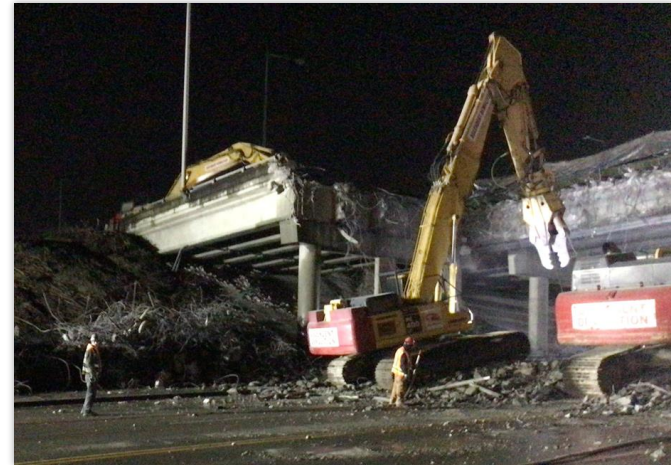
Phase 1

Existing traffic alignment



Completed activities

- **Realigned Existing Ramps:** Completed excavation, grading, and paving work to realign existing I-405 on- and off-ramps.
- **Northeast 85th Street Temporary Signals:** Installed two temporary signals, closed clover-leaf ramps, and added turn lanes.
- **Removed Collector-Distributor Bridges:** Removed the existing collector-distributor bridge, piers and abutments.



In progress activities

- **Waterline construction:** Installing 500lf of 52" steel casing across I-405. The line is 20' deep and runs from Northeast 87th Street to near Costco.
- **Water Line Vault:** The vault excavation is 40' long and 24' deep. The future vault will hold a 24" pressure-reducing water valve.
- **Temporary I-405 wall construction:** Crews are constructing four temporary walls to allow crews to build I-405 bridge supports.



Upcoming construction activities

Summer 2024 Overview



JUNE: New lane alignment on Northeast 85th Street



JUNE – JULY: Reduced queue lanes to northbound and southbound I-405 on-ramps



JULY: Lane reductions on Northeast 85th Street (weeknights and 24/7 on weekends)



SEPTEMBER: Weekend closures of Northeast 85th Street

Upcoming construction activities

New lane alignment on Northeast 85th Street

- Crews will restripe Northeast 85th Street into a new lane alignment to accommodate I-405 column work.
- Temporary nighttime lane closures during restriping.
- Beginning as early as June 28.
- Will be in place until early summer 2025.

Upcoming construction activities

New lane alignment on Northeast 85th Street



- Crews will restripe Northeast 85th Street into a new lane alignment to accommodate I-405 column work.
- Temporary lane closures during restriping.
- Sidewalk path maintained on north side of Northeast 85th Street.
- Left turn lanes remain same length.

Upcoming construction activities

Reduced queue lanes to NB and SB I-405 on-ramps

- The middle two lanes of Northeast 85th Street will be shifted to allow crews to construct a new column under I-405.
- Queue lanes to northbound and southbound on-ramps will be shortened and have reduced queue capacity.
- Right turn lanes will be shortened for up to eight weeks starting in early July.
- Travelers are recommended to use alternate routes and travel during off-peak hours to avoid congestion during this time.

Upcoming construction activities

Reduced queue lanes to NB and SB I-405 on-ramps



- The middle two lanes of Northeast 85th Street will be shifted.
- Queue lanes to northbound and southbound on-ramps will be shortened and have reduced queue capacity.
- Sidewalk path maintained on north side of Northeast 85th Street.

Upcoming construction activities

Northeast 85th Street Lane Reductions



- Complex construction work will require Northeast 85th Street to be reduced to one lane in both directions.
- Lane reduction will be in place during weeknights and weekends (day and night) from Monday, July 8 at 9 p.m. until Monday, July 22 at 5 a.m.
- Expect increased congestion and plan for additional travel time these weeks and especially on weekends.
- Alternate routes and travel during off-peak times recommended.

July lane reductions

Northeast 85th Street will be reduced to one lane in both directions

	1	2	3	4	5	6
7	8	9	10	11	12	13
	Nighttime (9 p.m. – 5 a.m.)					24/7
14	15	16	17	18	19	20
24/7	Nighttime (9 p.m. – 5 a.m.)					24/7
21	22	23	24	25	26	27
24/7						
28	29	30	31			

LEGEND:

-  Weeknight lane reductions - 9 p.m. – 5 a.m.
-  Weekend lane reductions – day AND night

Upcoming construction activities

Northeast 85th Street Weekend Closures in September

- Two weekend full closures of Northeast 85th Street are anticipated in early September.
- Closures are necessary for the safety of the traveling public and to accommodate equipment for placing large bridge girders.

More details to be shared in advance of the closure.



Example photo of girder setting

What you can expect during construction

- Weekday, weekend, and night work
- Lane closures
- Northeast 85th Street closures (partial and full closures)
- I-405 ramp closures
- Signed detours and flaggers
- Noise, dust, exhaust, and vibrations



How we're reducing community impacts

Minimizing noise

- Noisy work is completed during the day unless lane closures are required.
 - During night work, noisy work is conducted earlier in the evening shift when possible.
 - Equipment is selected for reduced noise levels.
 - Vehicles use an ambient backup alarm versus the loud, audible backup alarms.
 - All trucks on the night shift have bed liners to reduce impact noise.
 - Horn honking for vehicle positioning is prohibited.
 - Dumping trucks are prohibited from slamming tailgates while dumping.
-

Reducing exhaust

- Truck idle times are monitored, and engines must be shut off when not in use.
-

Lowering light from work zones

- Generators, light plants, and towers are set back from property lines and homes to minimize light and noise impacts on homes.

Stay in touch!

How we're keeping Kirkland informed



- Road signs
- Mailed materials and information
- Briefings, meetings, and pop-up events
- Email and website updates
- Quarterly project updates on Zoom
- Poster and flyer distribution
- Coordination and meeting with businesses near the project site

**Stay informed by
subscribing to email
updates.**

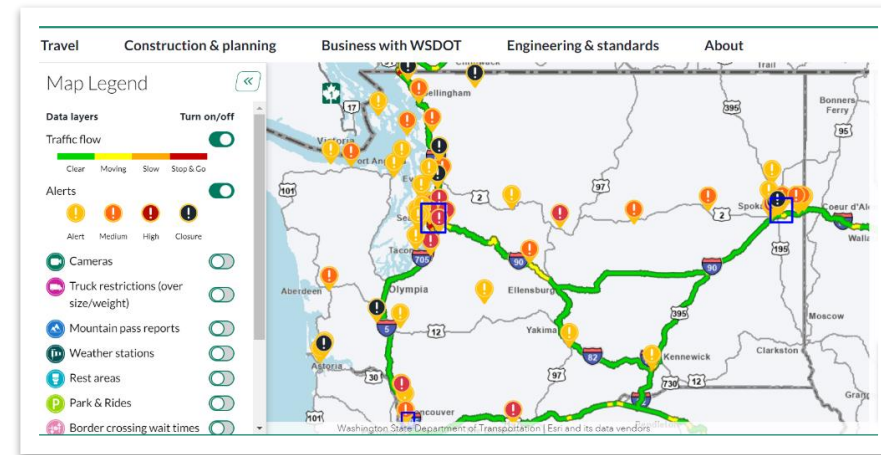
Updates include:

- Closures
- Lane shifts
- Nighttime or other potentially disruptive work
- Changes in work hours
- Construction milestones

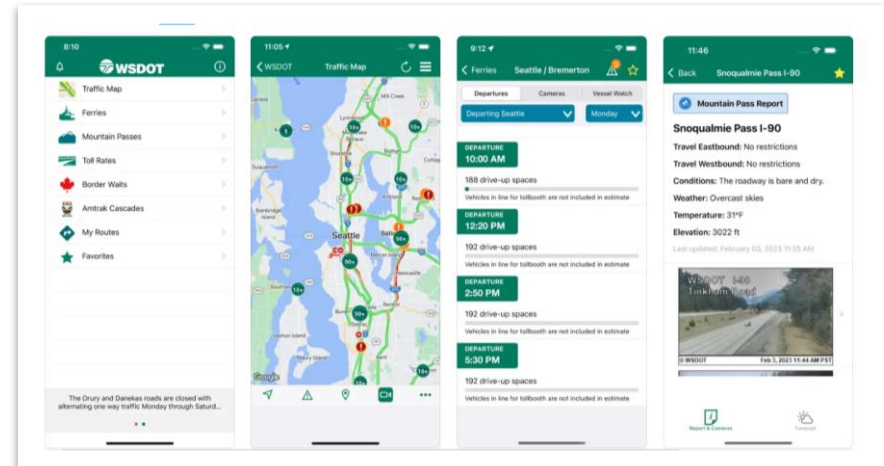
I405SR167Program@wsdot.wa.gov

For the most up-to-date travel impacts:

- Visit our real-time travel map: <http://wsdot.com/travel/real-time>



- Download the WSDOT mobile app: Just type in the term "WSDOT" in [Google play](#) or [the App Store](#) to download the WSDOT app.



How to stay updated



Email us:
I405SR167Program@wsdot.wa.gov

Email us to be added to the 85th project updates list.

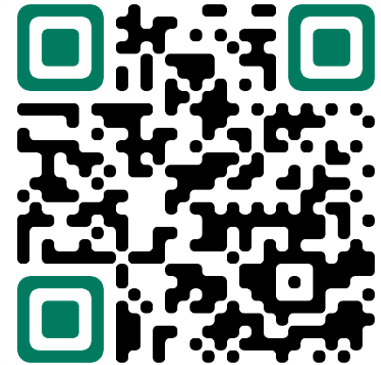


Visit the website:
bit.ly/85th-interchange-BRT



Call our construction hotline:
425-224-2423

Monitored weekdays, 8 a.m. – 5 p.m.

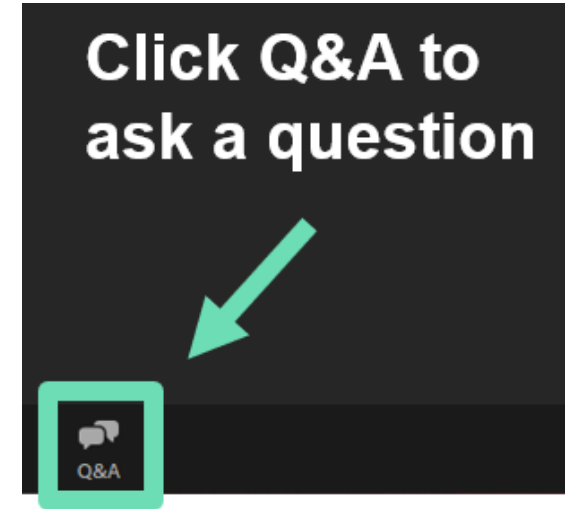


Questions, comments, or concerns?

Submit a question via Zoom Q&A window

- Keep questions focused on this project
- Submit your questions as short, complete sentences
- We will answer as many questions as possible by 1:30 p.m.

Questions specific to an individual situation can be difficult for us to answer now. You can call or email our team after the meeting to get these types of questions answered. We are here to help!



 425-456-8585 (general program info.)
425-224-2423 (project hotline)

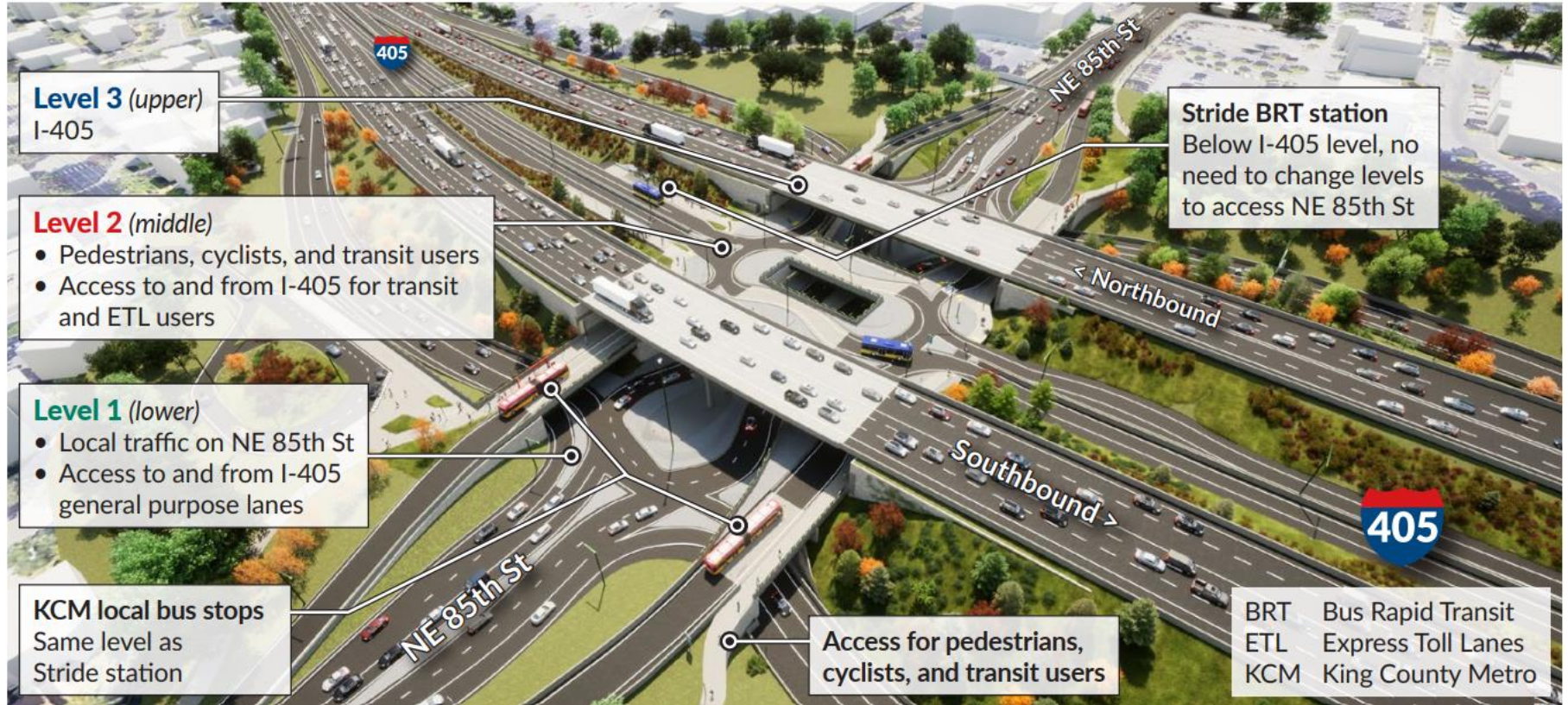


1405SR167Program@wsdot.wa.gov



bit.ly/85th-interchange-BRT

The future of Northeast 85th Street



**Thank you for
joining us today!**