

# Montlake Project

## Monthly Construction Update

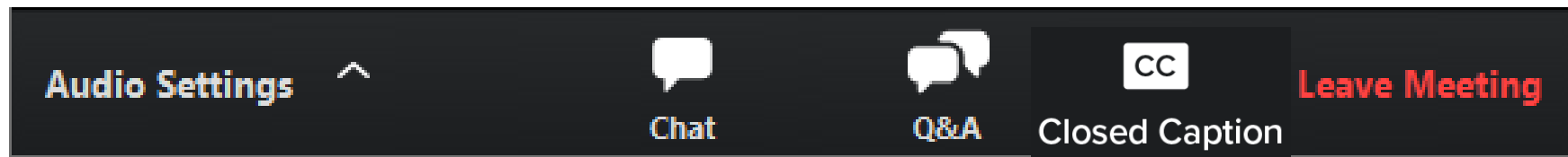
May 15, 2024

# How to participate in the webinar

All attendees are muted.  
To adjust your audio settings during the meeting, click on **Audio Settings**.



Please use the **Q&A window** to ask questions or offer comments.



**CHAT** is disabled during the presentation. Please communicate with the team through the **Q&A window**.



Turn on **closed captions** if you want to view captions during the meeting. They are available in English only.



# Agenda

- Current and upcoming work
- How to stay informed
- Comments and questions



# Major project elements

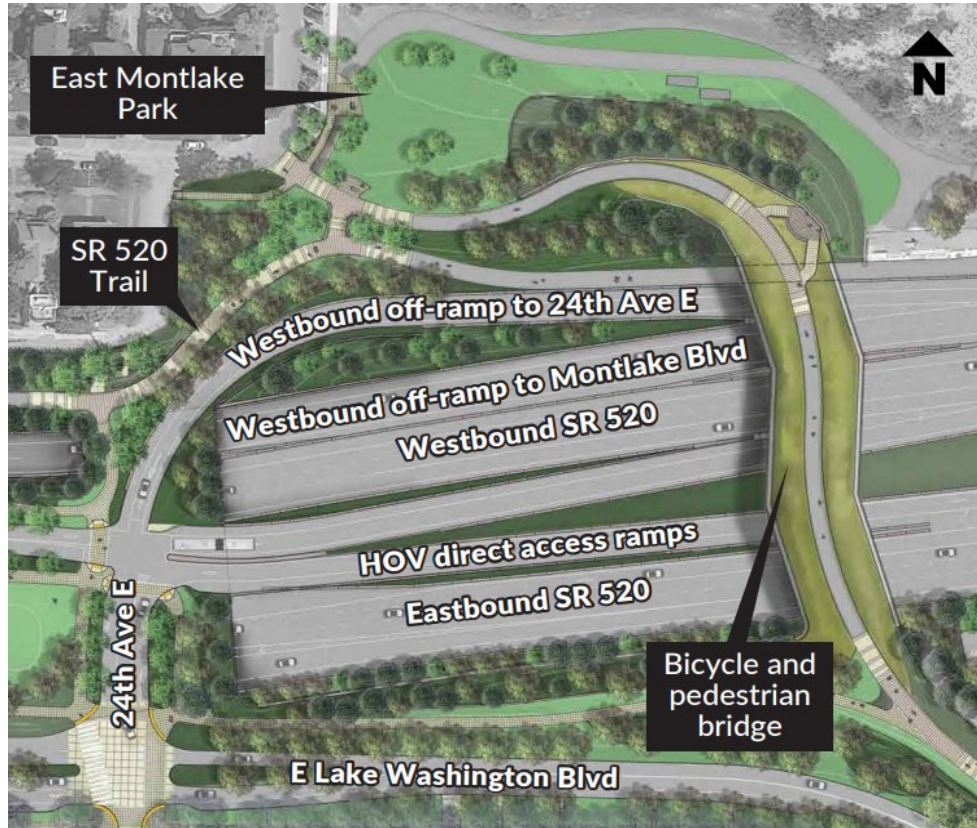
The Montlake Project will improve transportation for motorized and nonmotorized travel along the SR 520 corridor, including:

- A new eastbound bridge
- Montlake lid
  - HOV and bus lane
  - On and off ramps
- Bicycle and pedestrian bridge and connecting pathways



# Project milestones

June/July 2024 – HOV direct access ramps will open to the public.



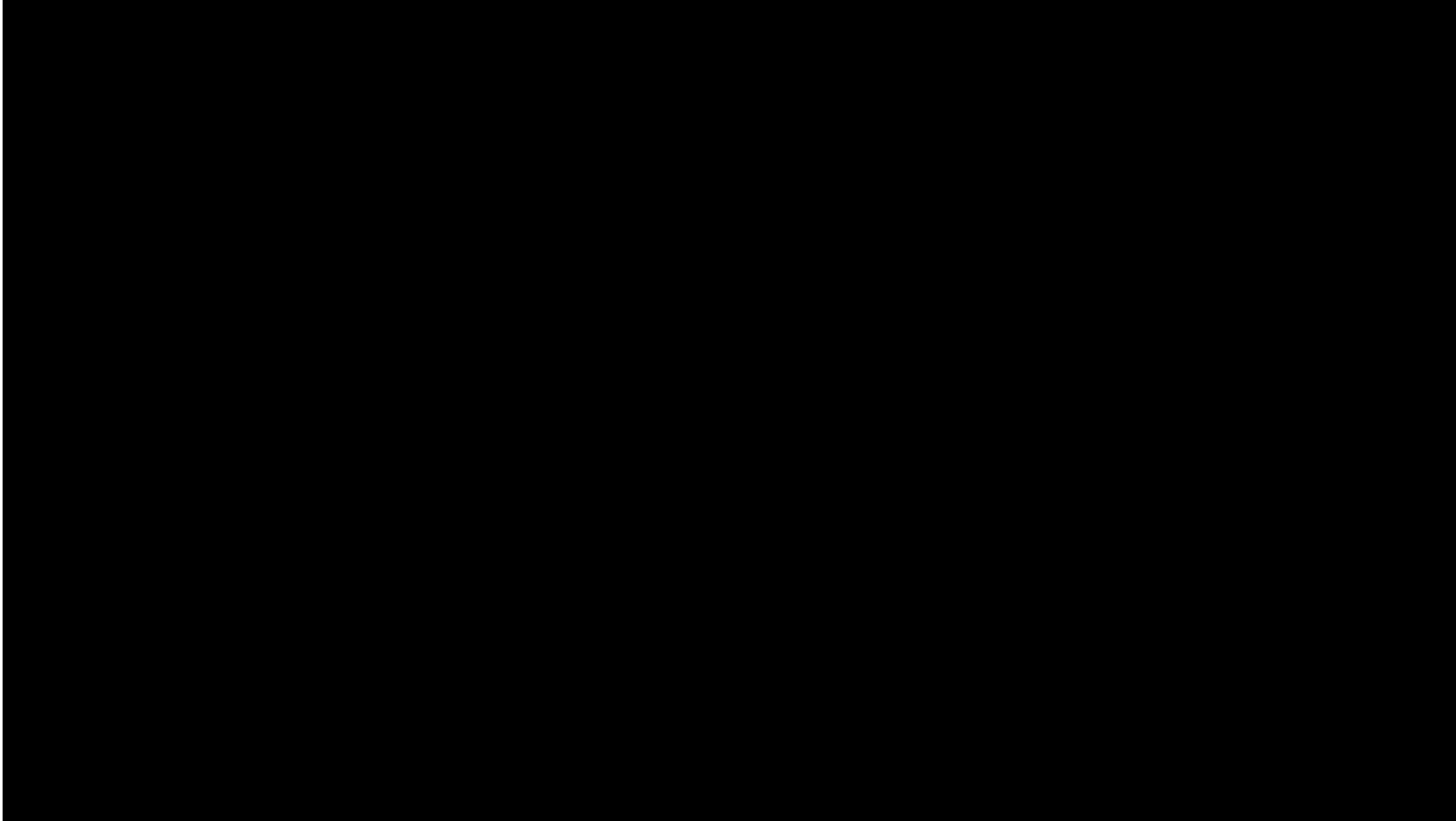
HOV direct access ramps work zone



HOV direct access ramps (March 26)

# Project milestones

June/July 2024 – SR520 Realignment



# Project milestones

July 2024 – Bicycle and Pedestrian Bridge over SR 520 connecting Lake Washington Boulevard to East Park Drive will be open to the public.



Visualization of bicycle and pedestrian bridge



Bicycle and pedestrian bridge deck (March 26)

# Project milestones

July 2024 – The Bill Dawson Trail will be connected to the pathway on the east and west sides of Montlake Boulevard through the shared-use tunnel. The trail will extend to the Bicycle and Pedestrian Bridge.



West entrance to the tunnel under Montlake Boulevard (March 26)



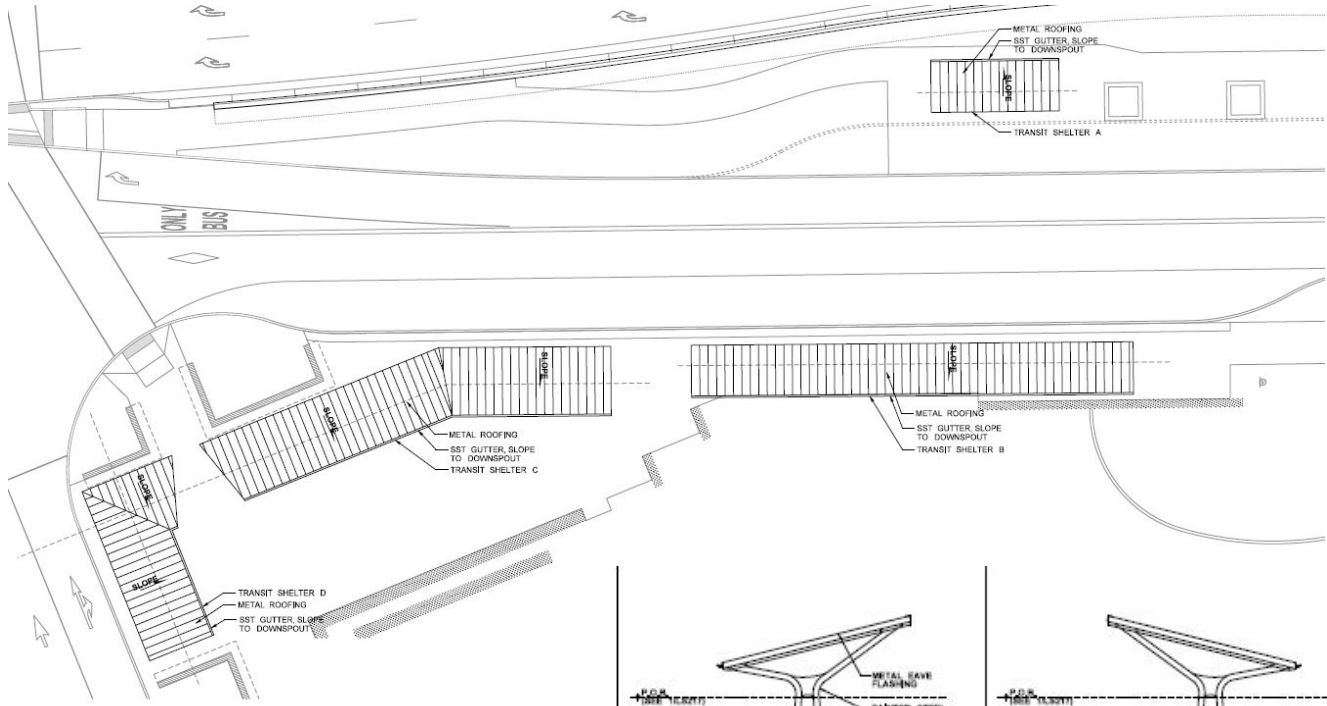
# Project milestones

July 2024 – Complete sidewalks, trails, and landscaping on the Montlake lid and open it to the public.

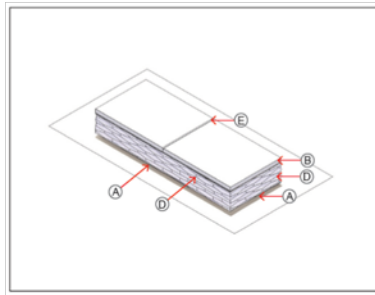
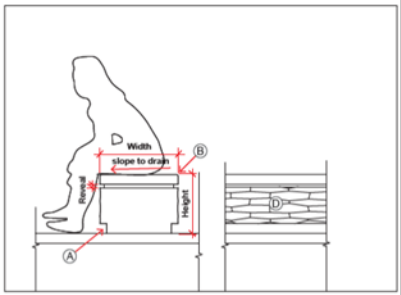
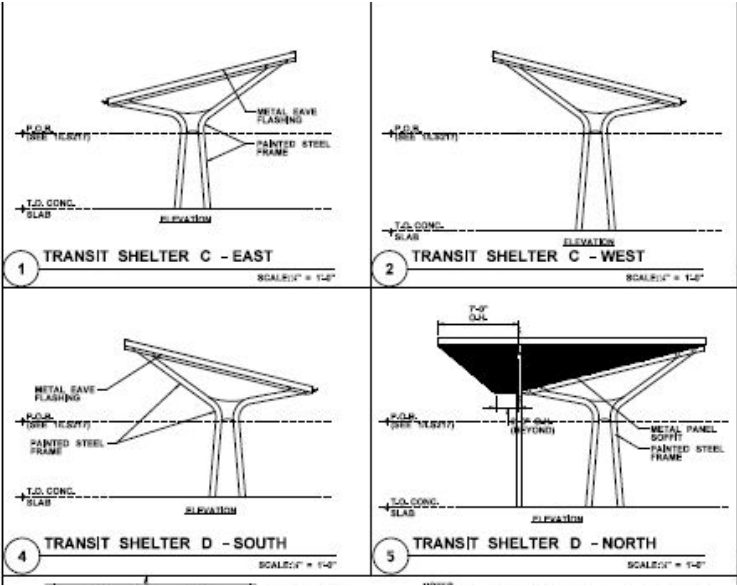


Montlake lid – west end (March 26)

# Project Milestone: Lid Transit Canopies



1 TRANSIT SHELTER ROOF PLAN



# Project Milestones



Montlake Boulevard



Lake Washington Blvd.

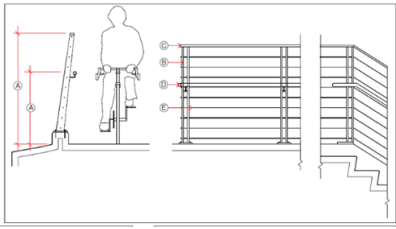


24<sup>th</sup> Ave & HOV lighting

*Bicycle and pedestrian bridge construction*



SR520 Lighting



SR520 Railing



SR520 Bench



Achillea spp. (Yarrow)  
3'-4' ht.



Agropyron spicatum (Bluebunch  
Wheatgrass) 1.5'-4' ht.



Allium cernuum (Nodding  
Onion) 1-3' ht.



Clarkia amoena (Godetia 'Farewell to Spring')  
0.5'-3' ht.



Coreopsis lanceolata (Lance-leaf Coreopsis)  
2' ht.

Note: Examples of fixtures only. Items may vary.

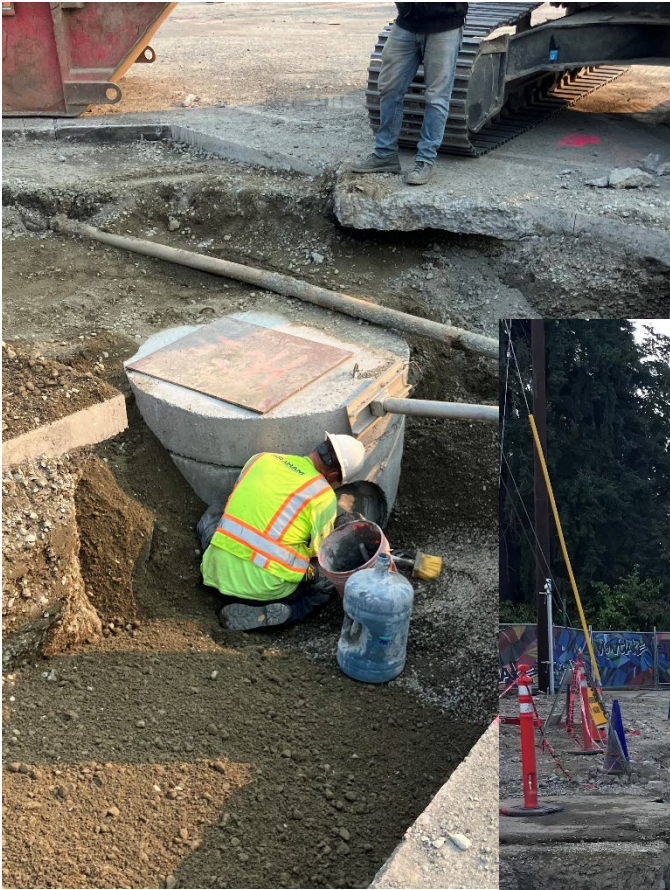
# Project completion-Montlake to Roanoke

Work to be completed includes signal conduit, Montlake Plaza, and final paving.



Montlake Market Plaza (March 26)

# Project completion-Montlake to Roanoke



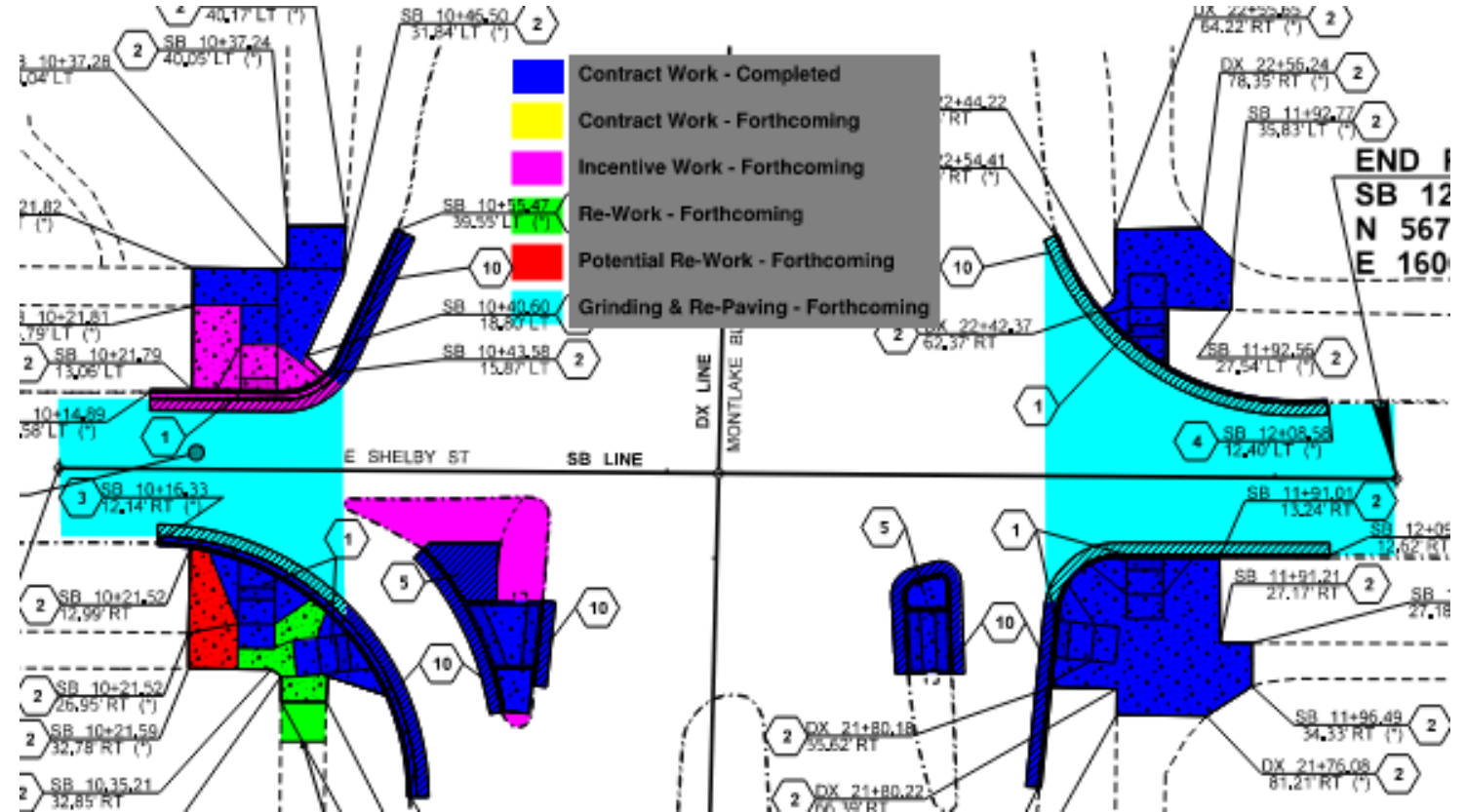
# Project completion- Montlake to Roanoke & 22<sup>nd</sup> Ave

Work to be completed includes sidewalks and ADA ramps. This will reduce roadway to single direction exit to East Montlake Blvd and East Roanoke Street.



# Project completion-Montlake to Hamlin

Work to be completed includes Curb & ADA Ramp replacement



# Project completion –Traffic Congestion

- 48,000 approx. vehicles travel north and south per day along Montlake Blvd.
- Montlake Bridge closures
- Signal timing in temporary configuration
- Traffic movements





# Project completion -Old Canal Reserve

Work to be completed includes, pathways, landscaping and electrical by third party



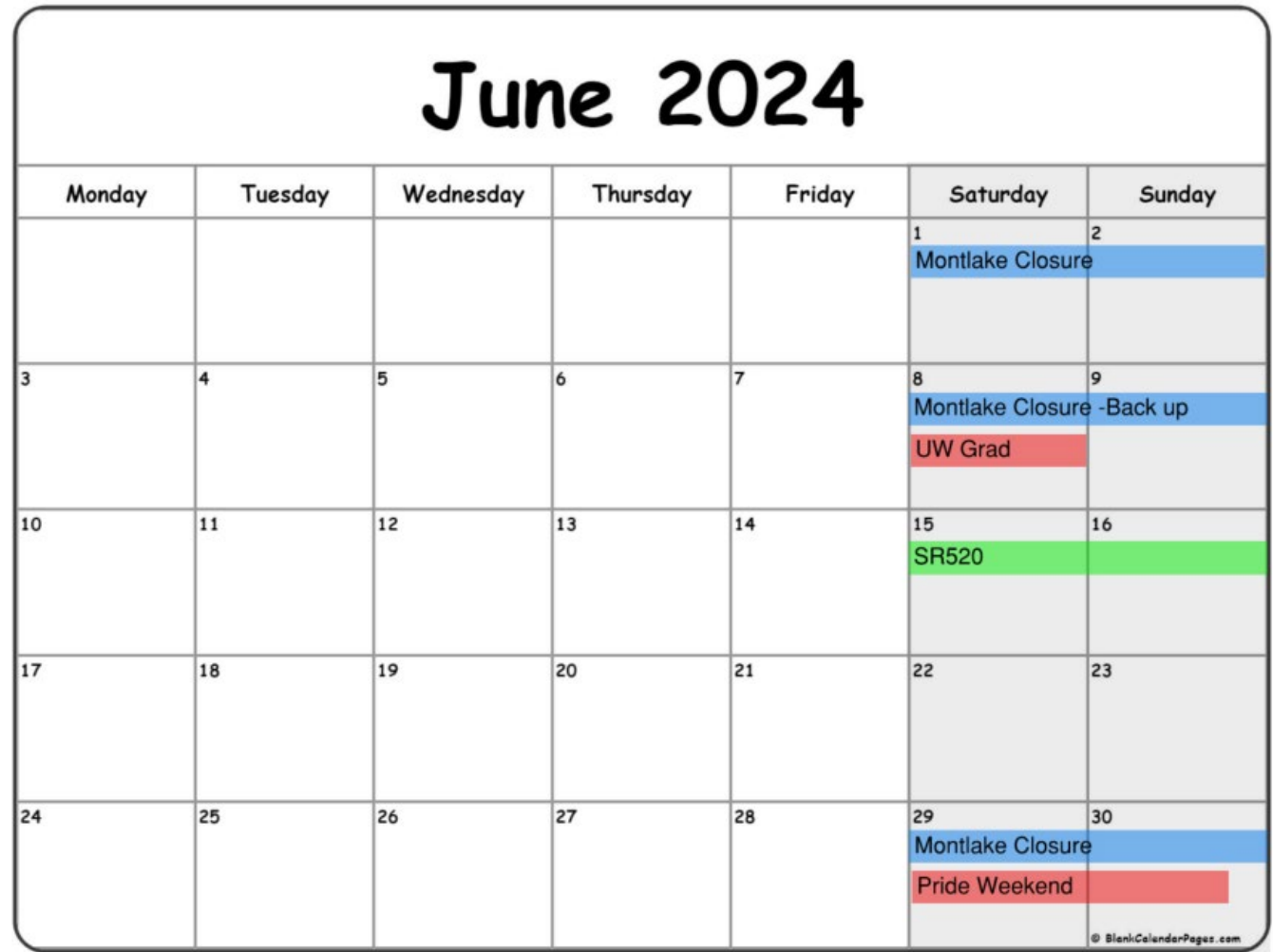
Old Canal Reserve – east facing (March 26)

# Remaining project closures:



May 2024

Monday	Tuesday	Wednesday	Thursday	Friday	Saturday	Sunday
					Opening Day of Boating	
					SR520	
					University District Street Fair	Beat the bridge
					Memorial Day	
Memorial Day						



June 2024

Monday	Tuesday	Wednesday	Thursday	Friday	Saturday	Sunday
					1 Montlake Closure	2
					8 Montlake Closure - Back up	9 UW Grad
					15 SR520	16
					22	23
					29 Montlake Closure	30 Pride Weekend

Graham coordinates project closures with the City of Seattle and Washington State Department. Closures are reviewed to determine impacts to the travelling public throughout the city taking into consideration local events and holidays.

# Remaining project closures:

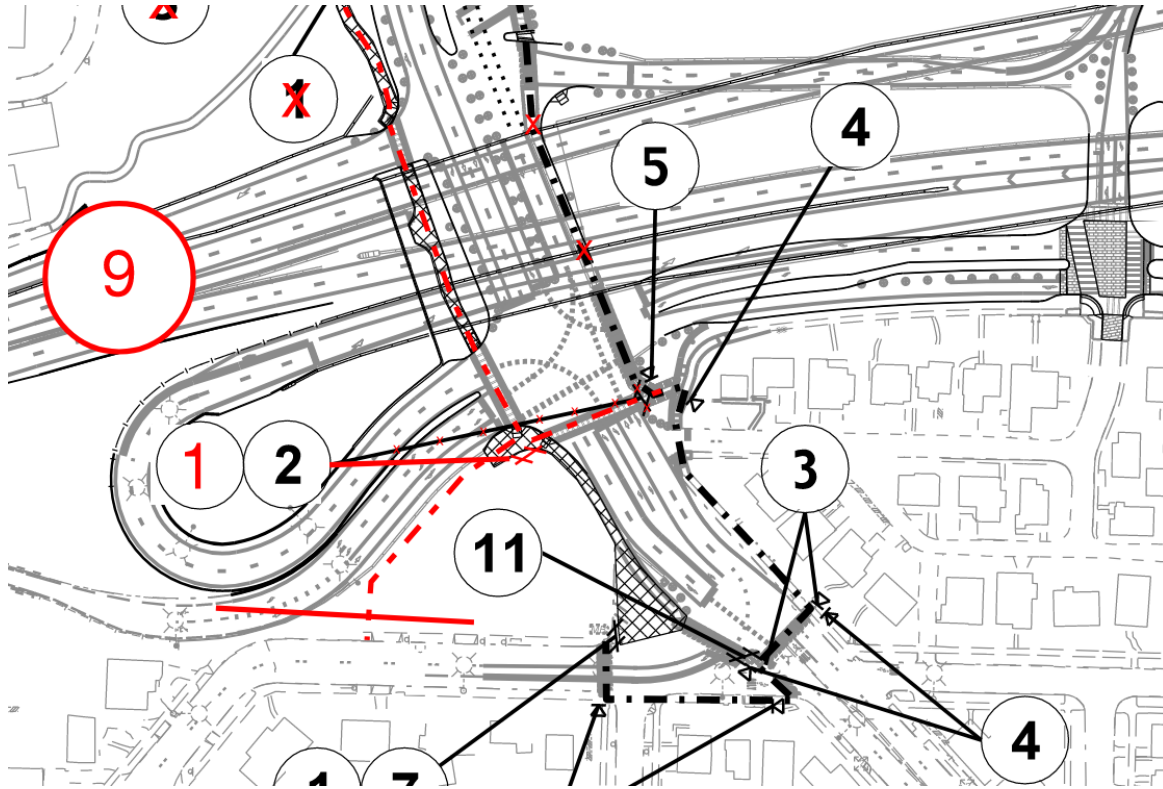
July 2024						
Monday	Tuesday	Wednesday	Thursday	Friday	Saturday	Sunday
1	2	3	4 Independence Day	5	6 SR520 - Backup	7
8	9	10	11	12	13 Montlake Closure - Back up SR520	14 Seattle to Portland Bike Ride
15	16	17	18	19	20	21 Seafair Triathlon
22	23	24	25 Bite of Seattle	26	27	28
29	30	31				

August 2024						
Monday	Tuesday	Wednesday	Thursday	Friday	Saturday	Sunday
			1	2	3	4
					5 Blue Angels Air Show	6
7	8	9	10	11	12 Montlake Closure	13 Obliteride
14	15	16	17	18	19 SR520 Montlake Closure - Backup	20
21	22	23	24	25	26 SR250	27
28	29	30	31			

Schedule is pending coordination with third party agencies and is subject to change.

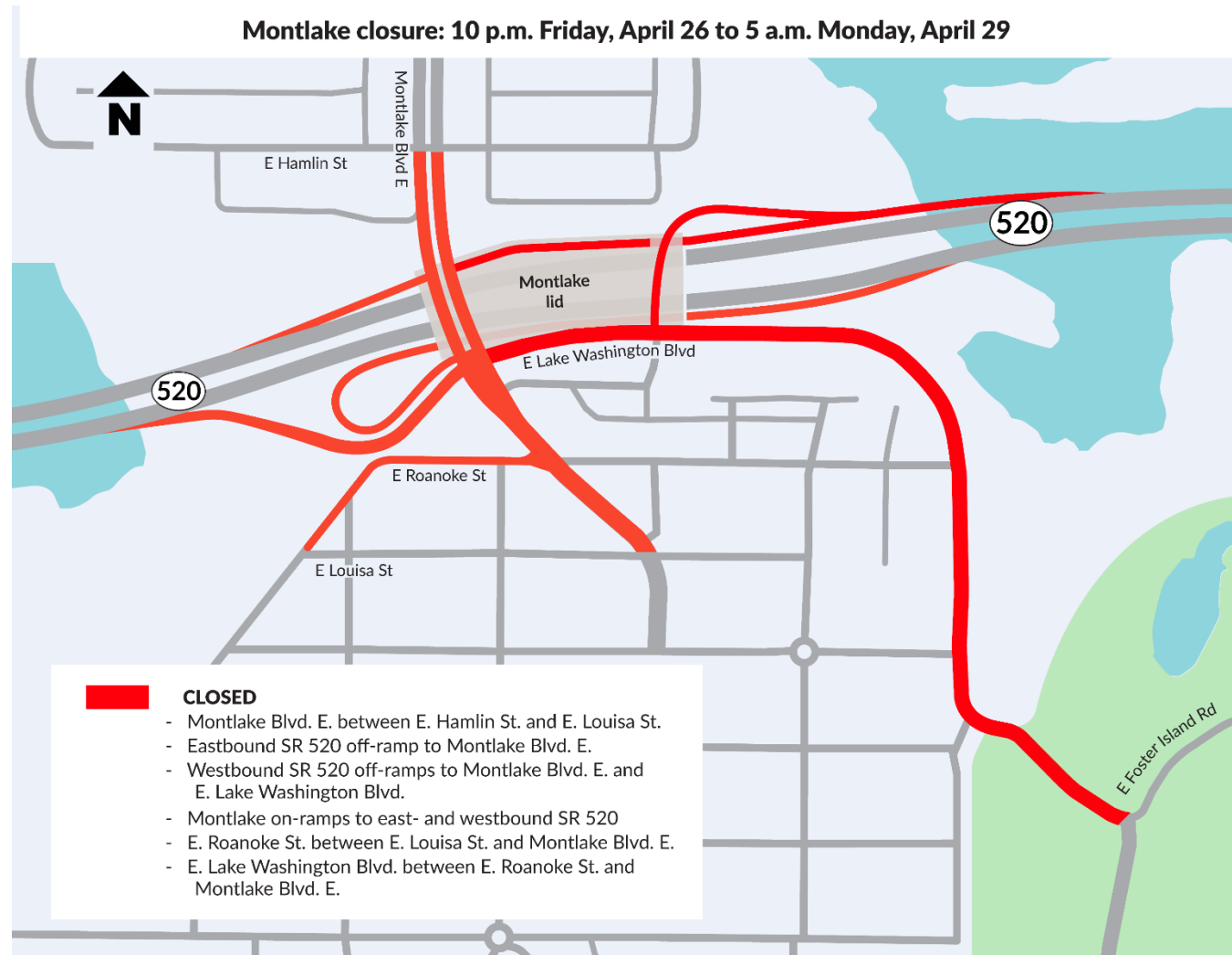
# Upcoming closure: Montlake Blvd. sidewalk

7 a.m. Monday May 13 to 10 p.m. Friday May 17



# Upcoming closure: Montlake Blvd.

10 p.m. Friday May 31 – 5 a.m. Monday June 3



# What to expect: Noise and vibration

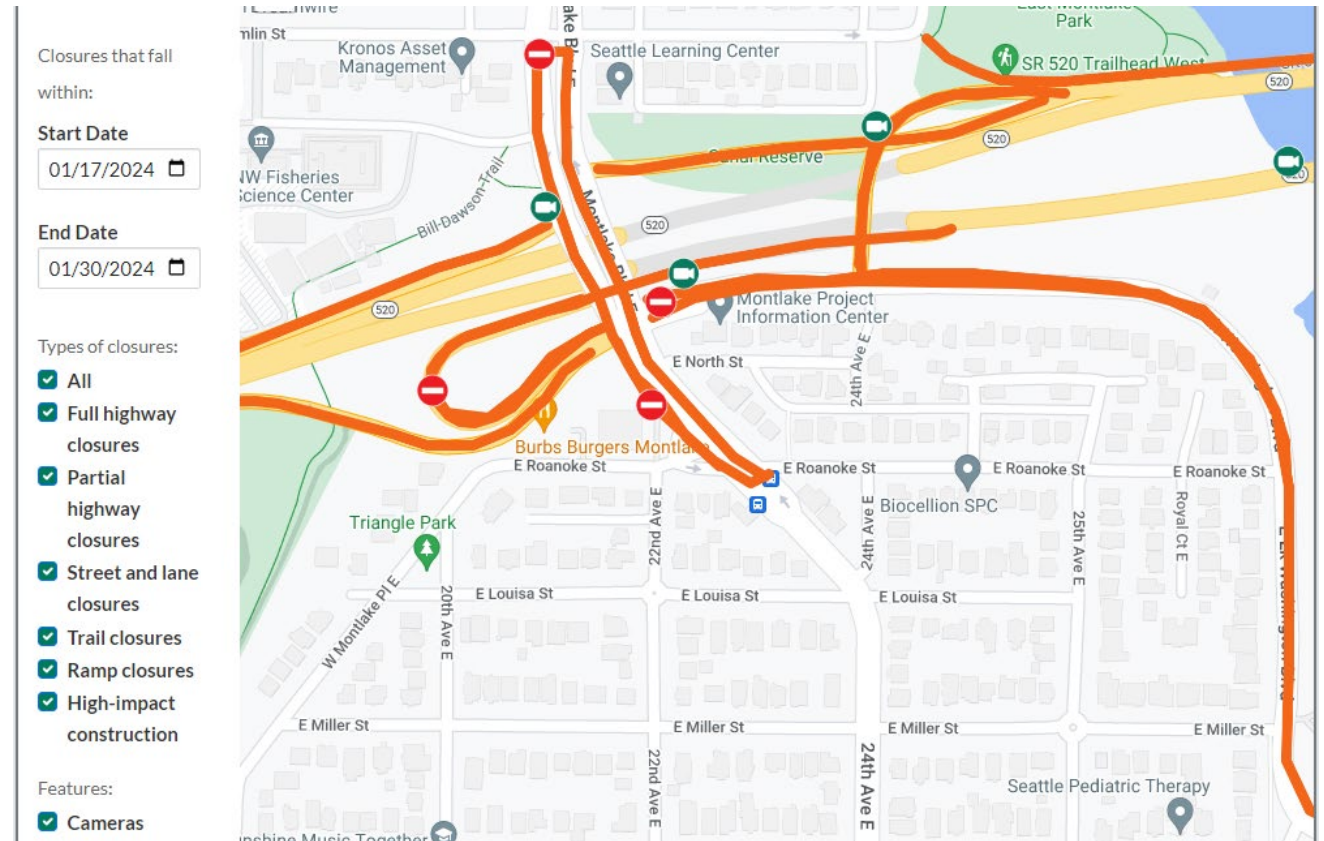
- Different types of equipment result in different levels and kinds of noise and vibration.
- Electronic noise and vibration meters record levels throughout the project area.
- Vibration monitors collect data in the field and immediately alert the project team when readings are outside the set tolerances.
- Nighttime construction has stricter rules for noise levels and equipment use.
- We've received a Major Public Project Construction Noise Variance (MPPCNV) permitting higher than normal decibel levels between the hours of 10 p.m. and 7 a.m.
- Crews may work 24 hours a day, seven days a week throughout construction.
- Typical work hours for the loudest work:
  - 7 a.m. to 10 p.m. weekdays
  - 9 a.m. to 10 p.m. weekends and holidays
  - Impact pile driving has stricter work hours and will occur:
    - 8 a.m. to 5 p.m. weekdays
    - 9 a.m. to 5 p.m. weekends
- Independent noise monitors will be present for night work to ensure compliance with specified noise levels.

Our 24-hour hotline, **206-775-8885**, is the best way to report noise and vibration concerns and to have questions addressed in the moment.

Visit the SR 520 Construction Corner to view the MPPCNV, read up on the allowable nighttime decibel levels, or read our weekly noise report:  
[www.sr520construction.com/ManagingConstructionEffects](http://www.sr520construction.com/ManagingConstructionEffects)

# How to stay informed

- Call our 24-hour hotline: [206-775-8885](tel:206-775-8885)
- Email us with questions: [sr520bridge@wsdot.wa.gov](mailto:sr520bridge@wsdot.wa.gov)
- Visit the Montlake Project website: [https://bit.ly/520montlake\\_program](https://bit.ly/520montlake_program)
- Visit the SR 520 Construction Corner to learn more about upcoming construction: [www.sr520construction.com](http://www.sr520construction.com)
- Follow us on Twitter: [@wsdot\\_520](https://twitter.com/wsdot_520)
- Sign up to receive our email updates at [sr520bridge@wsdot.wa.gov](mailto:sr520bridge@wsdot.wa.gov)
- Watch construction in “real time” on construction cameras: <http://bit.ly/520cams>
- Participate in our online meetings and events



*Example of Construction Corner map*



Comments and questions?