

Montlake Project

Monthly Construction Update

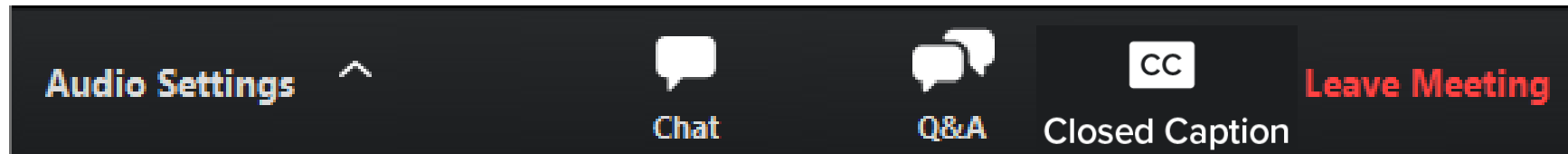
Feb. 14, 2024

How to participate in the webinar

All attendees are muted.
To adjust your audio settings during the meeting, click on **Audio Settings**.



Please use the **Q&A window** to ask questions or offer comments.



CHAT is disabled during the presentation. Please communicate with the team through the **Q&A window**.



Turn on **closed captions** if you want to view captions during the meeting. They are available in English only.



Agenda

- Current and upcoming work
- How to stay informed
- Comments and questions



Major project elements

The Montlake Project will improve transportation for motorized and nonmotorized travel along the SR 520 corridor, including:

- A new eastbound bridge
- Montlake lid
 - HOV and bus lane
 - On and off ramps
- Bicycle and pedestrian bridge and connecting pathways



Spring 2024 Project Milestones

April/May 2024 – Open to the public the bike and pedestrian bridge over SR 520 connecting Lake Washington Boulevard to East Park Drive.



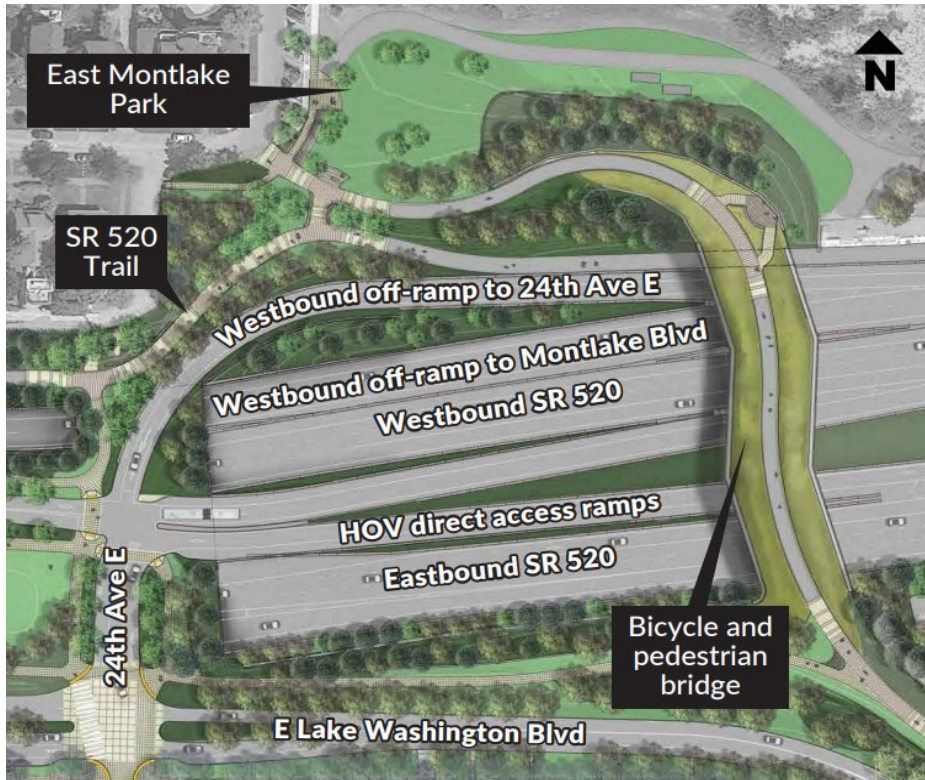
Visualization of bicycle and pedestrian bridge



Bicycle and pedestrian bridge deck (Jan. 23)

Spring 2024 Project Milestones

April/May 2024 – HOV direct access ramps will open to the public.



HOV direct access ramp work zone.



HOV direct access ramp (Jan 23)

Spring 2024 Project Milestones

April/May 2023 – Open to the public the shared-use tunnel under Montlake Boulevard connecting to the Bill Dawson Trail.



Westbound entrance to the tunnel under Montlake Boulevard
(Oct. 18)

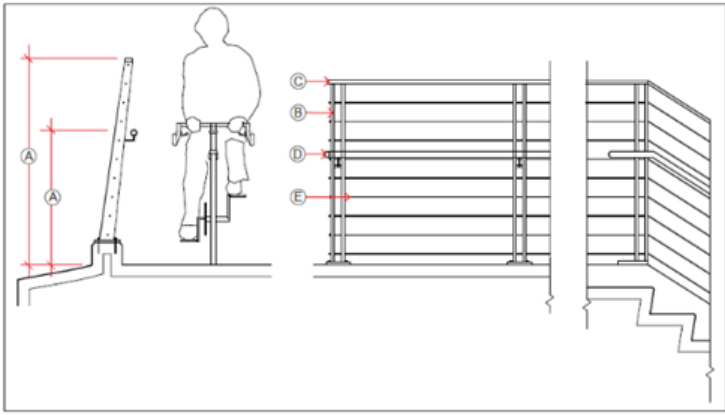
Spring 2024 Project Milestones

April 2024 – Complete sidewalks, trails, and landscaping on the Montlake lid and open to public.



Montlake lid – west end (Jan. 23)

Spring 2024 Project Milestones



Bicycle and pedestrian bridge railing



Montlake Boulevard



Lake Washington Blvd.



24th Ave & HOV lighting



SR520 Lighting



Achillea spp. (Yarrow)
3'-4' ht.



Agropyron spicatum (Bluebunch
Wheatgrass) 1.5'-4' ht.



Allium cernuum (Nodding
Onion) 1-3' ht.



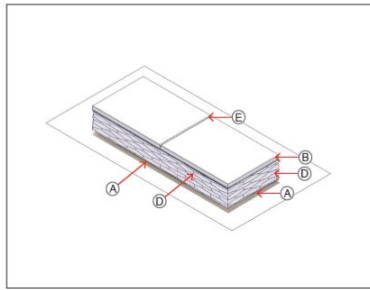
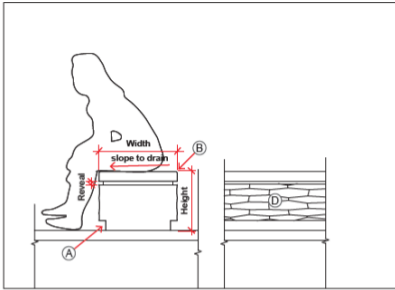
Clarkia amoena (Godetia 'Farewell to Spring')
0.5'-3' ht.



Coreopsis lanceolata (Lance-leaf Coreopsis)
2' ht.

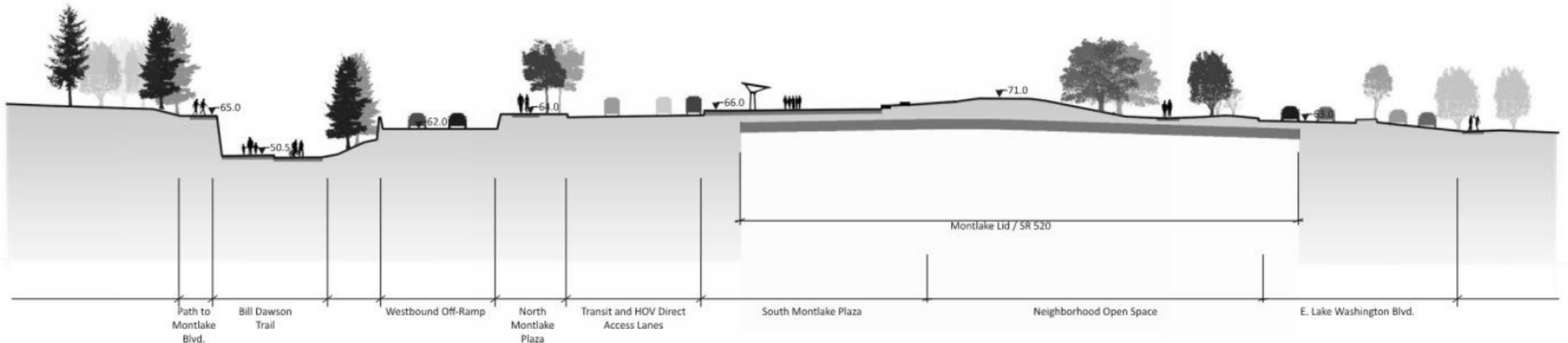
Note: Examples of fixtures only. Items may vary.

Spring 2024 Project Milestones



Spring 2024 Project Milestones

Cross section of Montlake lid, looking east



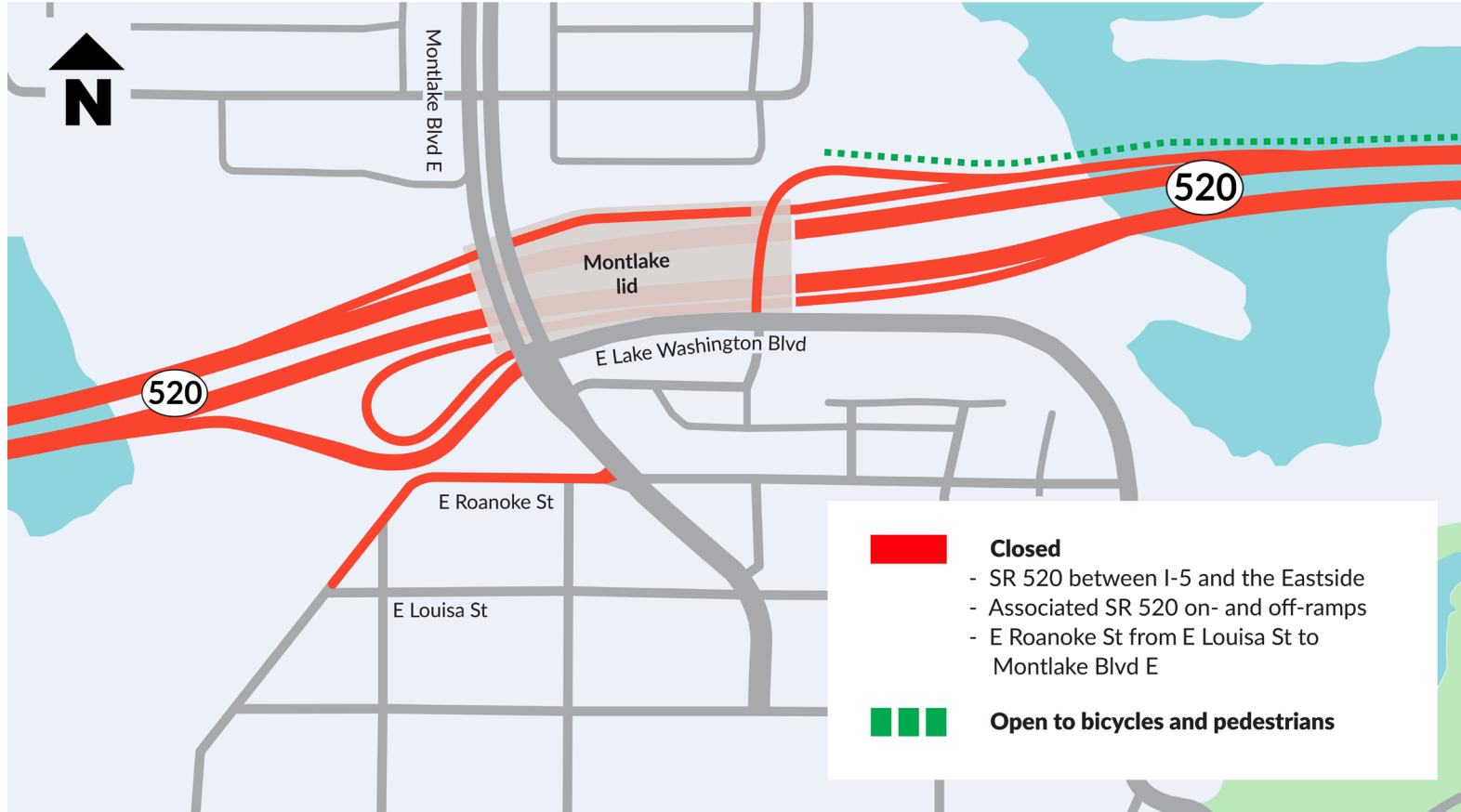
Arboretum ramp removal



Removal of the old Arboretum ramp will begin the week of Feb. 12 and continue through the end of March.

Upcoming closure: SR 520 & Roanoke

SR 520 closure Feb. 23-26



Feb. 23 - 26 full closure of:

- E. Roanoke Street between E. Louisa Street and Montlake Boulevard
- SR 520 Mainline closed in both directions between I-5 and 92nd Ave NE on the Eastside

What to expect: Noise and vibration

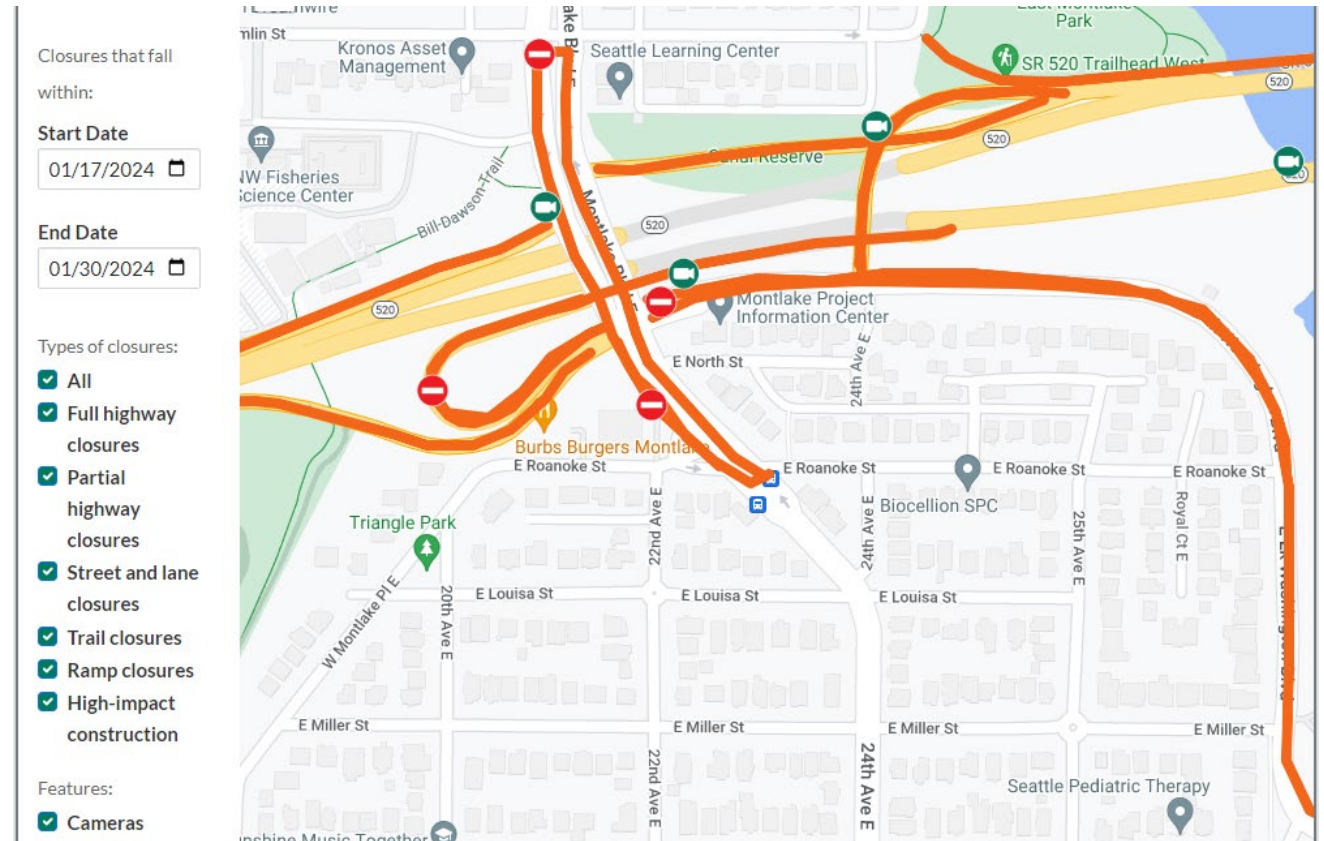
- Different types of equipment result in different levels and kinds of noise and vibration.
- Electronic noise and vibration meters record levels throughout the project area.
- Vibration monitors collect data in the field and immediately alert the project team when readings are outside the set tolerances.
- Nighttime construction has stricter rules for noise levels and equipment use.
- We've received a Major Public Project Construction Noise Variance (MPPCNV) permitting higher than normal decibel levels between the hours of 10 p.m. and 7 a.m.
- Crews may work 24 hours a day, seven days a week throughout construction.
- Typical work hours for the loudest work:
 - 7 a.m. to 10 p.m. weekdays
 - 9 a.m. to 10 p.m. weekends and holidays
 - Impact pile driving has stricter work hours and will occur:
 - 8 a.m. to 5 p.m. weekdays
 - 9 a.m. to 5 p.m. weekends
- Independent noise monitors will be present for night work to ensure compliance with specified noise levels.

Our 24-hour hotline, **206-775-8885**, is the best way to report noise and vibration concerns and to have questions addressed in the moment.

Visit the SR 520 Construction Corner to view the MPPCNV, read up on the allowable nighttime decibel levels, or read our weekly noise report:
www.sr520construction.com/ManagingConstructionEffects

How to stay informed

- Call our 24-hour hotline: [206-775-8885](tel:206-775-8885)
- Email us with questions: sr520bridge@wsdot.wa.gov
- Visit the Montlake Project website: https://bit.ly/520montlake_program
- Visit the SR 520 Construction Corner to learn more about upcoming construction: www.sr520construction.com
- Follow us on Twitter: [@wsdot_520](https://twitter.com/wsdot_520)
- Sign up to receive our email updates at sr520bridge@wsdot.wa.gov
- Watch construction in “real time” on construction cameras: <http://bit.ly/520cams>
- Participate in our online meetings and events



Example of Construction Corner map



Comments and questions?