

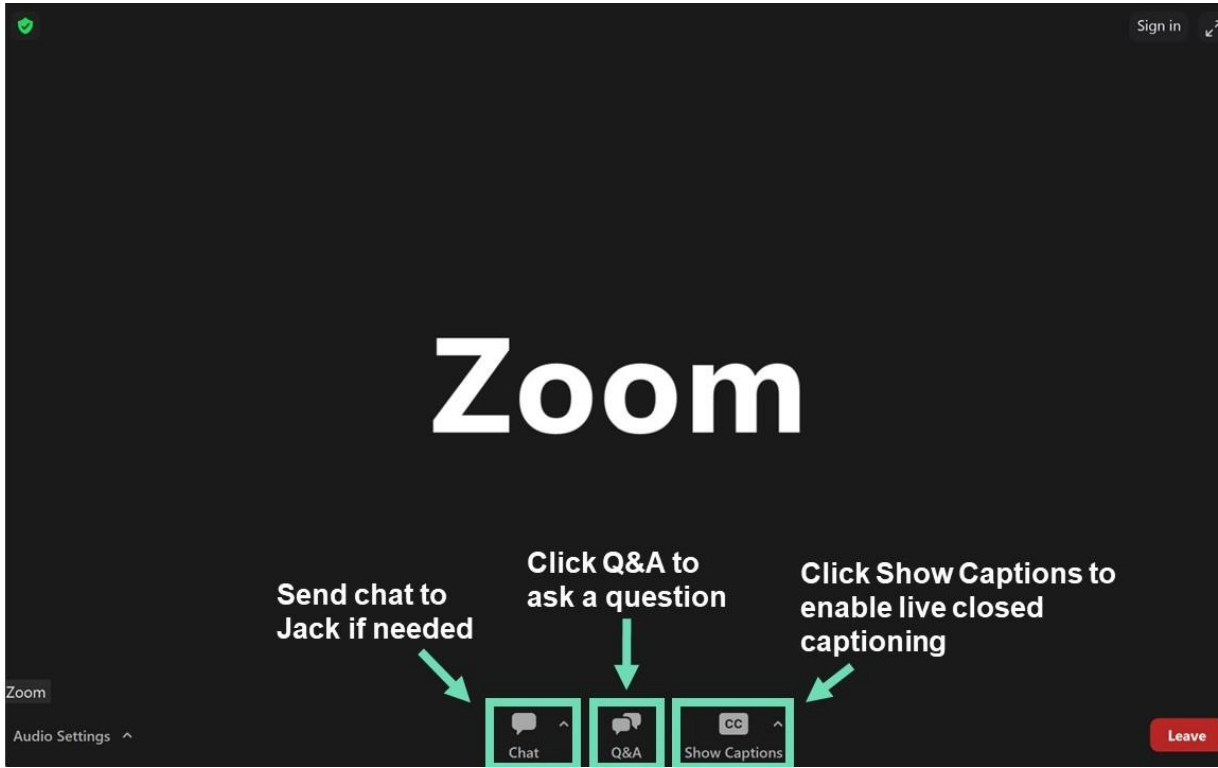
# I-405/Northeast 85th Street Interchange and Inline BRT Station Project

## Construction updates

July 2023

This meeting is being recorded. The recording will be sent to meeting registrants via email and posted on the project webpage.

# Zoom controls



Jack is our meeting host

Please chat in Zoom or call Jack if you have technical difficulties:

**425-224-2423**

# Welcome & introductions

- **Alex Stapnes**, Meeting Facilitator, Graham Communications
- **Drew Williams**, Graham Construction Management
- **Steven M. Beadle, PE**, WSDOT Project Engineer
- **Paul Cornish**, Sound Transit Strategic Projects Director
- **Karl Westby, PhD**, WSDOT I-405/SR 167 Program Traffic Manager
- **Allie Breyer**, WSDOT Communications Lead
- **Darcy Edmunds**, Meeting Support, Graham Communications
- **Jack Irwin**, Meeting Support, Graham Communications

# Agenda

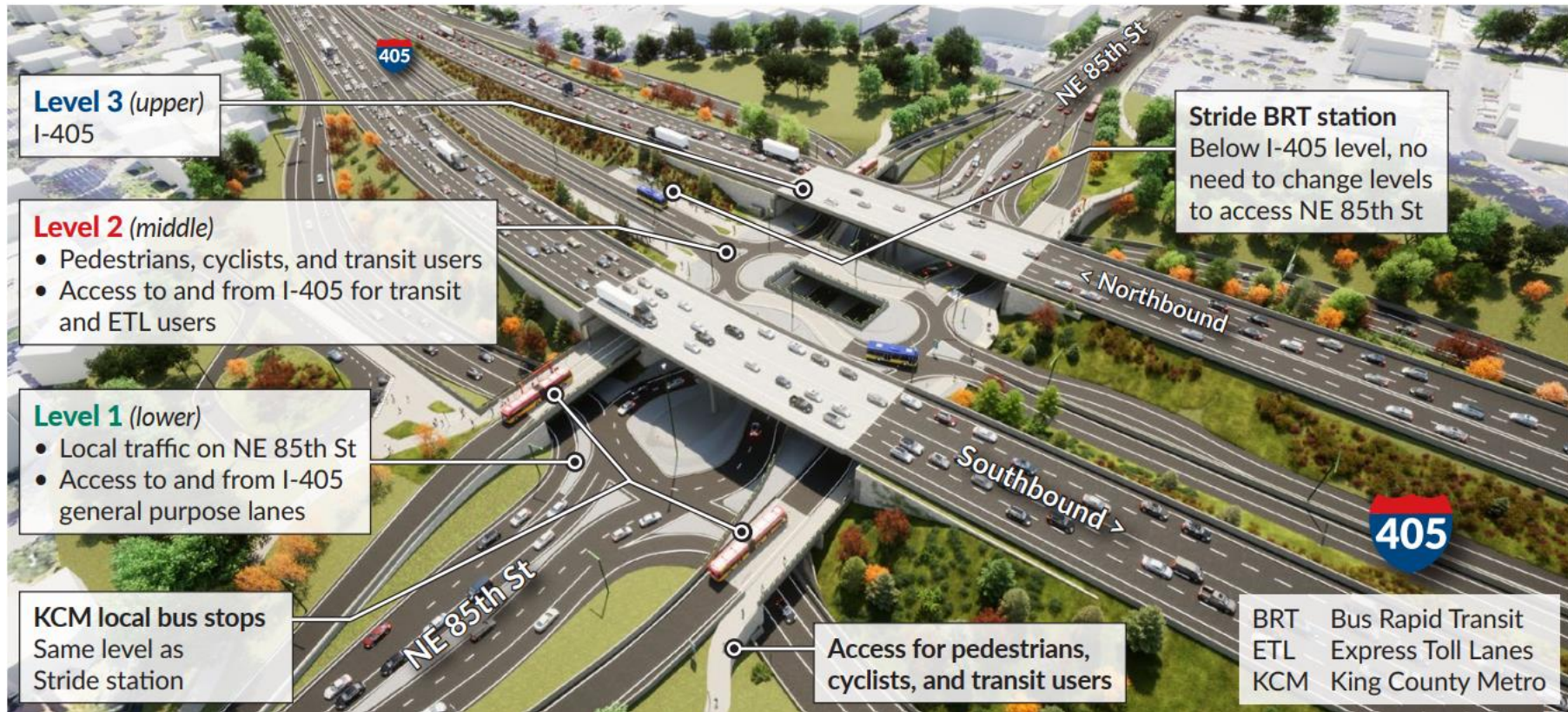
- Quick poll
- Project overview and benefits
- Stride Bus Rapid Transit (BRT)
- Roundabouts
  - What are roundabouts?
  - How do they make our roads safer?
- Construction updates
  - Schedule (2023 – 2026)
  - What's completed? What's next?
  - What you can expect during construction
  - Keeping residents informed
- Stay in touch!
- Questions?

# Quick poll

---

# Project overview and benefits

# The future of Northeast 85th Street



Video of the interchange concept: [youtube.com/watch?v=dz0oVamKSps](https://www.youtube.com/watch?v=dz0oVamKSps)

The bottom-level will be for Northeast 81st local traffic.  
Improvements along Northeast 81st Street will also include  
water sidewalks and a roundabout along Northeast 81st Street.





# Project benefits

When complete, people who live, work, or play in the region will:

- **Save time and money** with faster, more reliable access to transit services locally and regionally.
- **More easily connect** to downtown Kirkland and Redmond.
- **Be able to use** Express Toll Lanes when they need to.
- Experience **safer, more reliable transportation options** – no matter how they get around.





---

# **Stride Bus Rapid Transit (BRT)**

# What is Bus Rapid Transit?



## AM peak hour travel times to Bellevue

### North Line – Lynnwood to Bellevue



ST Express (existing)

57 MIN

ST3 representative project\*

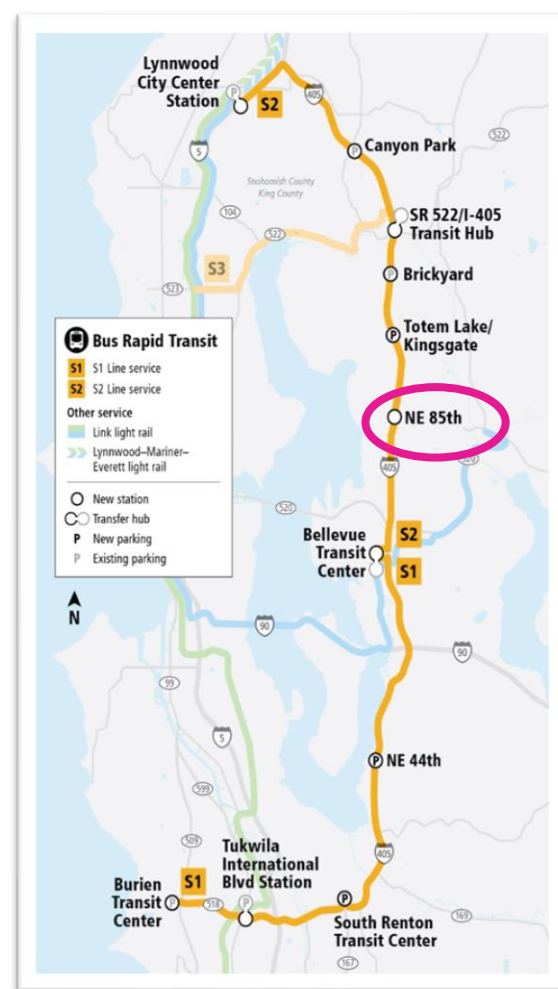
50-55 MIN

I-405 BRT proposed refined project\*

46-51 MIN

I-405 BRT with north express toll lanes

33-38 MIN



# Bus Rapid Transit Benefits



Sheltered and comfortable stations.



Bicycle accommodations.



Faster boarding, including off-board fare payment and all-door entry and exit.



Convenient all-day service with buses arriving every 10 minutes during the busiest periods of the day.



Real-time rider information.



Improved access to stations for all modes including connecting transit services.



Specialized buses.

---

# Roundabouts

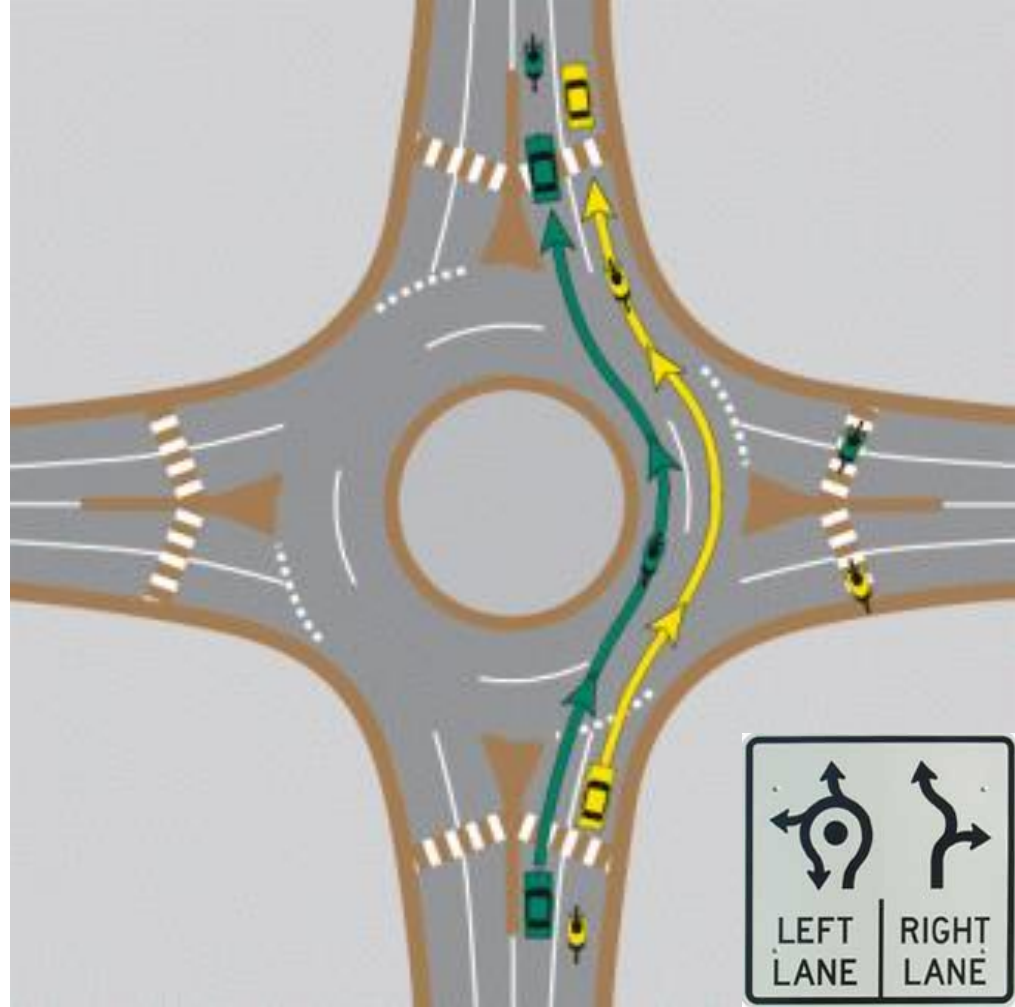
# Roundabouts

## What's a roundabout?

Circular intersection where drivers yield to other vehicles instead of stoplights or stop signs.

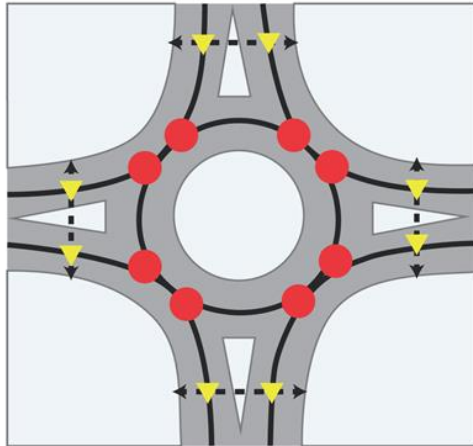
## Why build a roundabout?

- Improve traffic flow
- Fewer crashes
- Increase safety
- Reduce congestion
- Lower environmental impact



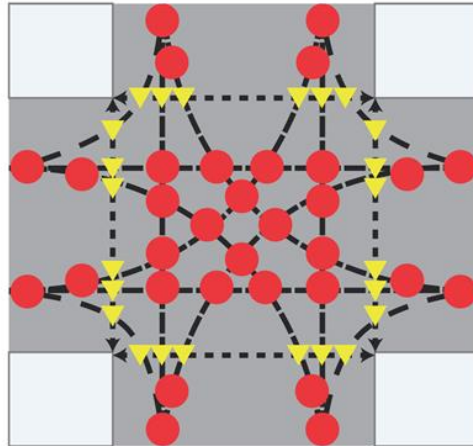
# How roundabouts can improve safety, increase mobility, and reduce crashes

## Roundabout



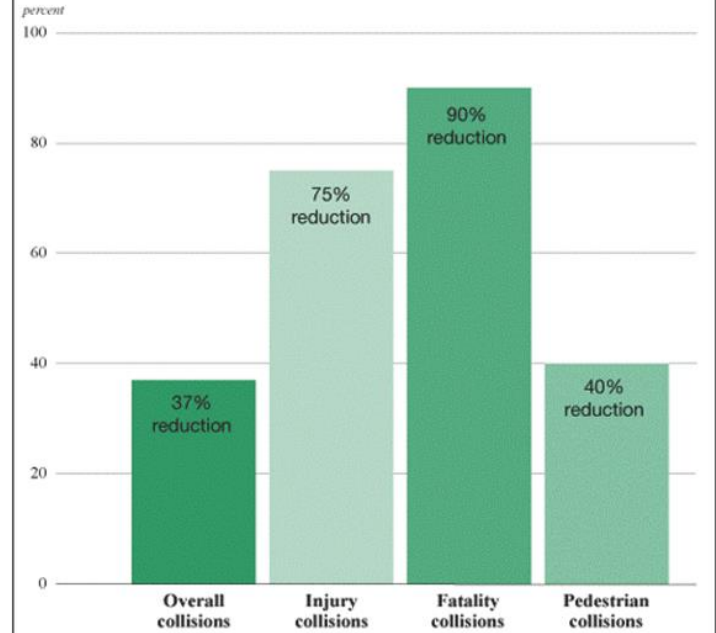
- 8 Vehicle Conflict Points
- ▼ 8 Pedestrian Conflict Points

## Intersection



- 32 Vehicle Conflict Points
- ▼ 24 Pedestrian Conflict Points

## Reduction in collisions



Source: Federal Highway Administration and Insurance Institute for Highway Safety (FHWA and IHS)

---

# Construction updates



# Project schedule

Schedule updated June 2023. Subject to change.

Near completion:  
December 2026

## Design

February 2023 – December 2023



★ We are here

## Early Construction

August 2023 – January 2024



Phase 1



Phase 2



Phases 3 and 4



Phase 5



# What have we completed so far

- ✓ **New field office:** Opened field office in Kirkland.
- ✓ **Surveying:** Measured and mapped land in construction area.
- ✓ **Geotechnical borings:** Drilled holes at site to understand rock and soil conditions and identify potential challenges.



# What have we completed so far

- ✓ **New field office:** Opened field office in Kirkland.
- ✓ **Surveying:** Measured and mapped land in construction area.
- ✓ **Geotechnical borings:** Drilled holes at site to understand rock and soil conditions and identify potential challenges.



# What's next

- **Construction activities** impacting travelers and residents begin in August.
- **Tree removal:** Follows tree removal plan. Trees will be replanted when major construction is nearly completed.
- **Clearing:** Clearing away plants, roots, and stumps from construction area.
- **Erosion control:** Putting in place short-term methods to keep soil in place and prevent erosion.



# What you can expect during construction

- Noise
- Vibrations
- Lane closures
- Northeast 85th Street closures
- I-405 ramp closures
- Weekday, weekend, and night work
- Signed detours and flaggers



---

**Stay in touch!**

# How we're keeping Kirkland informed

- Road signs
- Mailed materials and information
- Briefings, meetings, and pop-up events
- Email and website updates
- Quarterly project updates on Zoom
- Poster and flyer distribution
- Connecting regularly with neighbors and businesses



**Stay informed by  
subscribing to email  
updates.**

## **Updates include:**

- Closures
- Lane shifts
- Noisy work
- Changes in work hours
- Construction milestones

# How to stay updated



Email us:  
**[I405SR167Program@wsdot.wa.gov](mailto:I405SR167Program@wsdot.wa.gov)**

Email us to be added to the 85th project updates list.

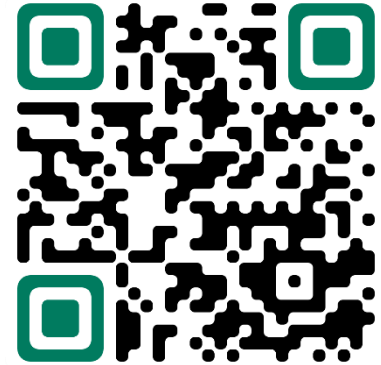


Visit the website:  
**[bit.ly/85th-interchange-BRT](https://bit.ly/85th-interchange-BRT)**



Call our construction hotline:  
**425-224-2423**

Monitored weekdays, 8 a.m. – 5 p.m.





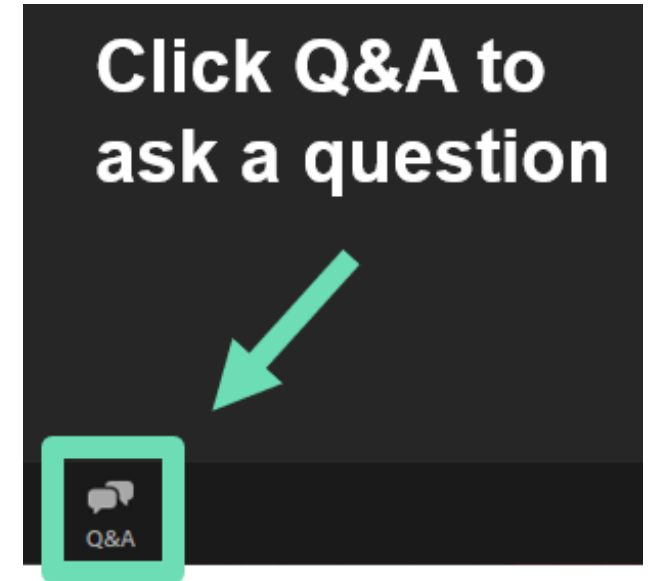
# Questions, comments, or concerns?

## Submit a question via Zoom Q&A window

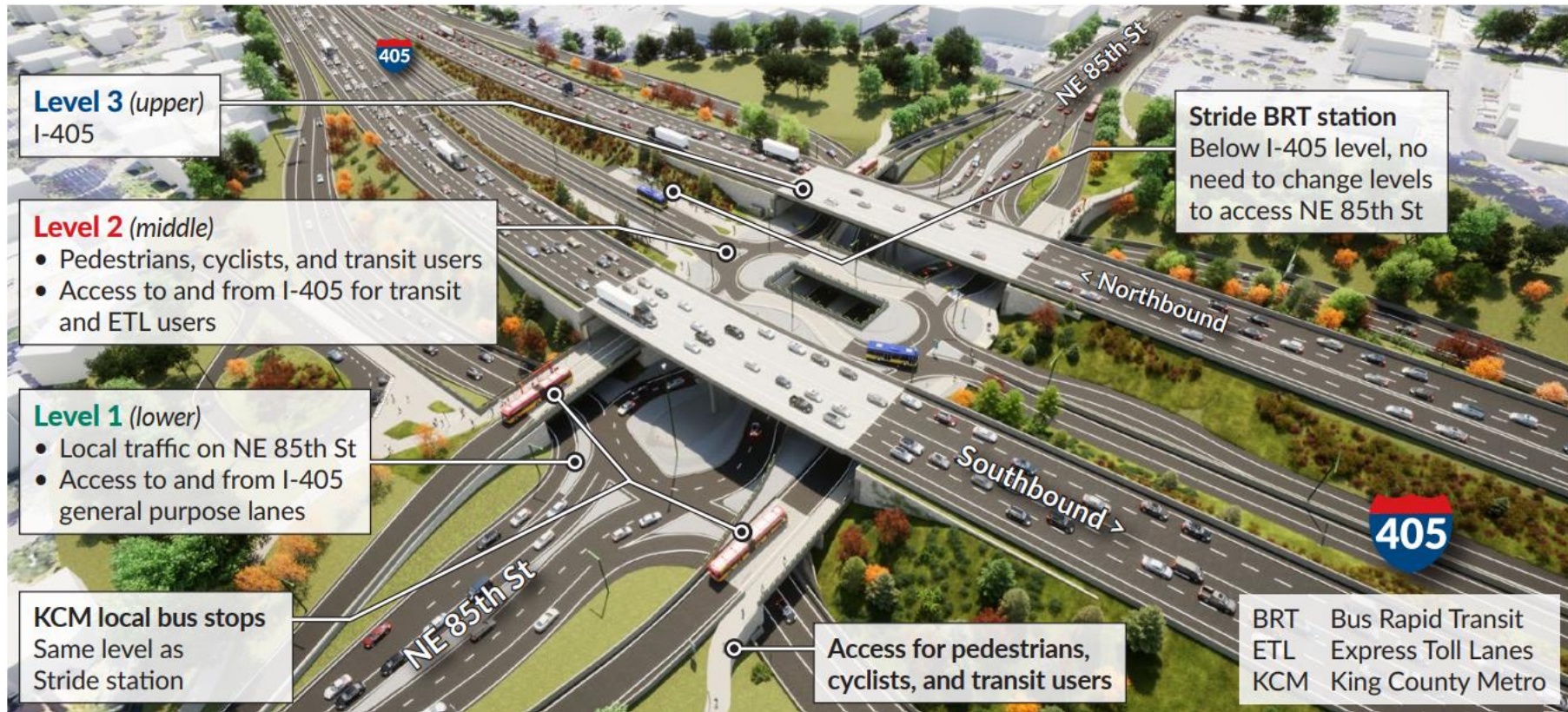
- Keep questions focused on this project
- Submit your questions as short, complete sentences (*this helps us read out the questions*)

We will answer as many questions as we can by 1:30 p.m.

Questions that are specific to an individual situation can be difficult for us to answer in the moment. You can call or email our team after the meeting to get these types of questions answered. We are here to help!



# The future of Northeast 85th Street



**Thank you for joining us today!**

# New roundabout at NE 85th St and 114th Ave NE



# Pickup/drop-off facility (NW quadrant)



- Convenient access to CKC and downtown
- Direct (and shorter) access to bus stops
- A viable connection to NE 85th Street

# Outreach



## 2018

- ✓ Kirkland Transportation Commission
- ✓ Kirkland City Council Ad Hoc Committee
- ✓ Kirkland City Council Study Session
- ✓ 4 stakeholder workshops
- ✓ Open house

## 2019

- ✓ 6 Kirkland neighborhood briefings
- ✓ Kirkland Alliance of Neighborhoods
- ✓ Kirkland Transportation Commission
- ✓ Open house
- ✓ Kirkland City Council Ad Hoc Work Group
- ✓ Kirkland Transportation Commission
- ✓ Kirkland City Council

## 2020

- ✓ Sound Transit BRT online open house
- ✓ 1 Kirkland neighborhood briefing
- ✓ Kirkland Planning/Transportation Commissions

## 2021

- ✓ Kirkland City Council

## 2022

- ✓ Voluntary Submitters Meeting
- ✓ Eastside Transportation Association briefing
- ✓ Highlands Neighborhood Association briefing
- ✓ Voluntary Proposers Meeting
- ✓ Kirkland City Council

## 2023

- ✓ Bridging Kirkland event
- ✓ 9 Briefings with businesses, community organizations, and partners
- ✓ Virtual community meeting
- Open house at project office
- Neighborhood introductions