

# US 395 IN CHEWELAH WSDOT COMPLETE STREETS PROJECT

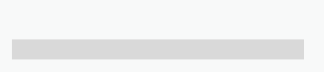
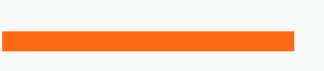
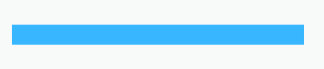


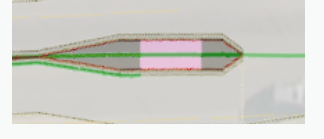
## Proposed Complete Streets Intersection Improvements: Sand Canyon Rd. (I1)

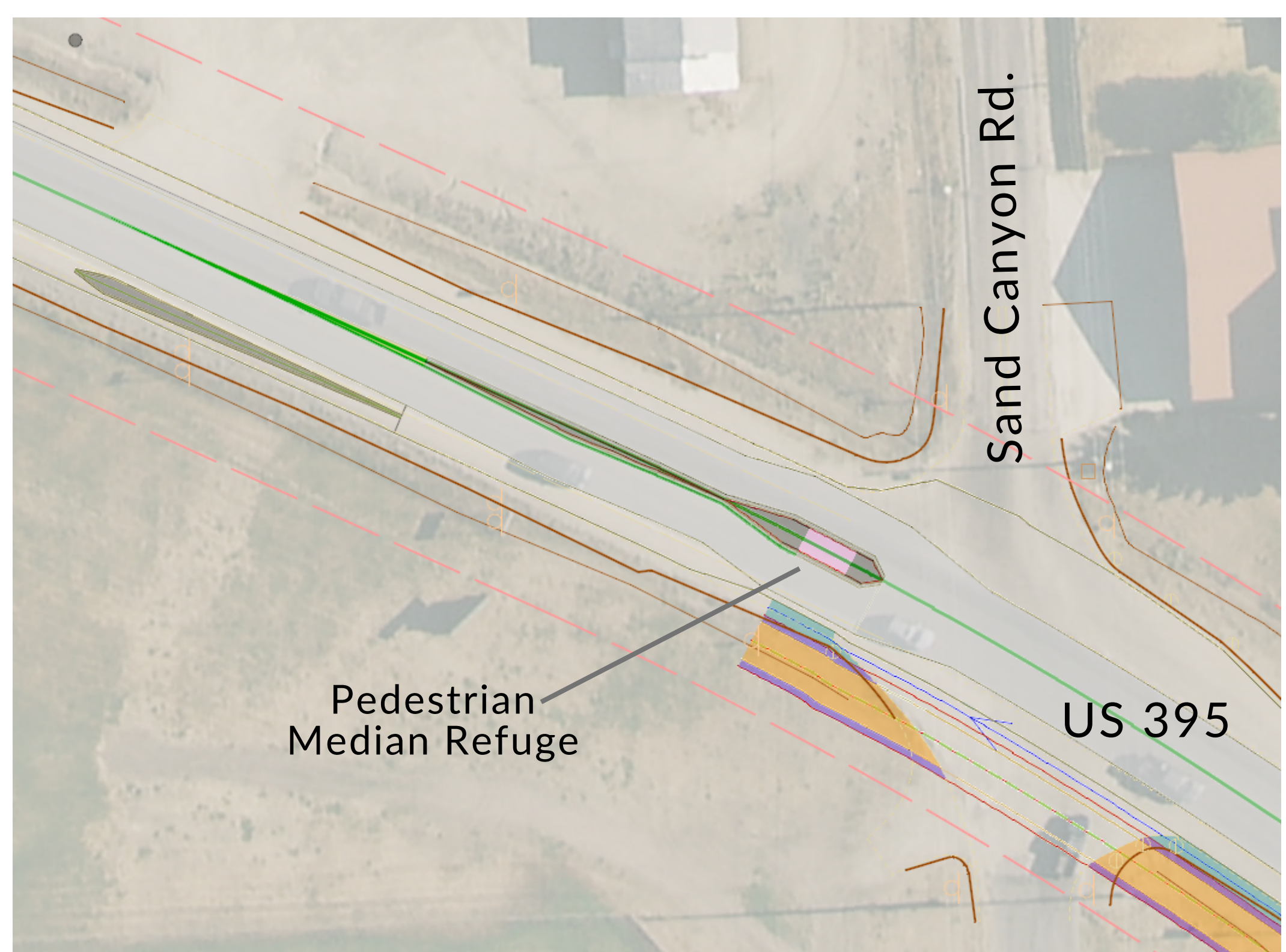
Improvement	Description
New Crosswalks	Add crosswalks to west and south legs of the intersection, using a design that is more resilient and lasts longer.
Lighting	Look for opportunities to improve lighting to make pedestrians and bicyclists more visible.
Pedestrian Crossing Signs	High visibility pedestrian crossing signs warning drivers of the crossing and to be aware of crossing pedestrians.
Chicane with Median Refuge	Chicanes use medians in the center of the roadway and on the shoulders to add slight curves in the travel lane that shift the path of vehicles, forcing them to slow down. The center median can be used to provide a refuge for crossing pedestrians.



Example of a chicane using medians to shift the path of vehicles, slowing them down.

### Legend:

-  Travel lanes
-  Shared use path
-  Shared use path buffer strip
-  Shared use path shoulder
-  Curbing
-  Chicane with pedestrian median refuge



Conceptual design of a chicane with pedestrian median refuge at US 395 and Sand Canyon Rd.