

Montlake Project

Monthly Construction Update

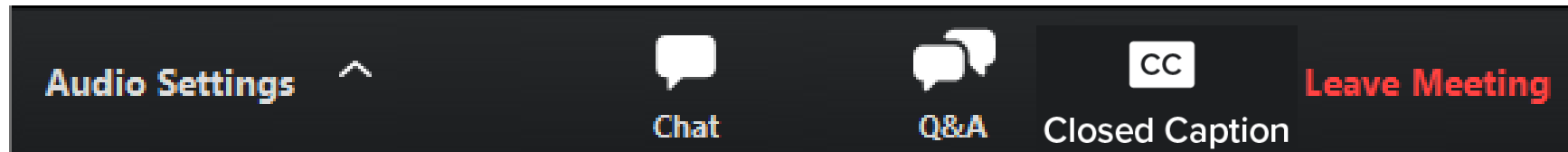
Oct. 18, 2023

How to participate in the webinar

All attendees are muted.
To adjust your audio settings during the meeting, click on **Audio Settings**.



Please use the **Q&A window** to ask questions or offer comments.



CHAT is disabled during the presentation. Please communicate with the team through the **Q&A window**.



Turn on **closed captions** if you want to view captions during the meeting. They are available in English only.



Agenda

- Current and upcoming work
- How to stay informed
- Comments and questions



Major project elements

The Montlake Project will improve transportation for motorized and nonmotorized travel along the SR 520 corridor, including:

- A new eastbound bridge
- Montlake lid
- Bicycle and pedestrian bridge



Summer 2023 Project Milestones

August 30, 2023 –
Completed shifting
eastbound traffic onto
the new SR 520
bridge between
Montlake Boulevard
and the floating
bridge.



On the right is the new eastbound SR 520 bridge. (Oct 4)

Fall 2023 Project Milestones

September 2023 –
Move Montlake
Boulevard traffic
into its final
configuration over
the new lid.



The intersection of Montlake Boulevard and SR 520. (Oct. 4)

Fall 2023 Project Milestones

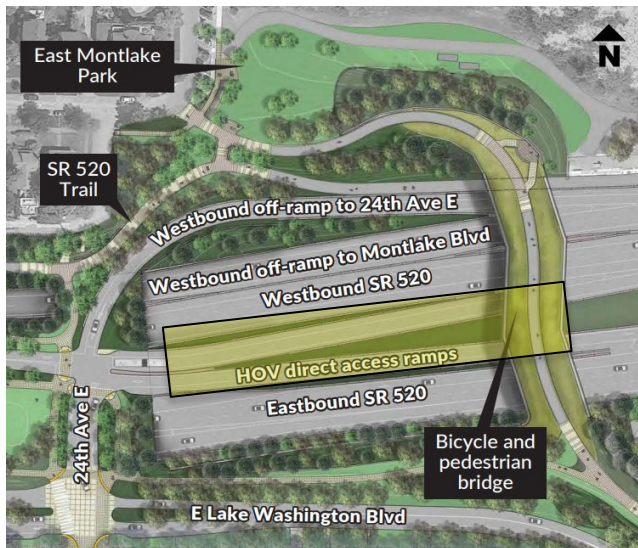
October 2023 –
Complete Lake
Washington Boulevard
construction between
Montlake Boulevard and
24th Street



The intersection of Lake Washington Boulevard and 24th Avenue East (Oct. 10)

Fall 2023 Project Milestones

November 2023 – Complete construction of the HOV direct access ramps on the east side of the Montlake lid.



HOV direct access ramp work zone is highlighted in yellow.



HOV direct access ramp. (Oct. 3)

Winter 2023/2024 Project Milestones

December 2023 – Connect the SR 520 regional trail to the Bill Dawson Trail through a tunnel under Montlake Boulevard.



*Eastbound entrance to the tunnel under Montlake Boulevard
(Aug. 30)*

Winter 2023/2024 Project Milestones

December 2023 – Complete the bike and pedestrian bridge over SR 520 connecting Lake Washington Boulevard to East Park Drive.

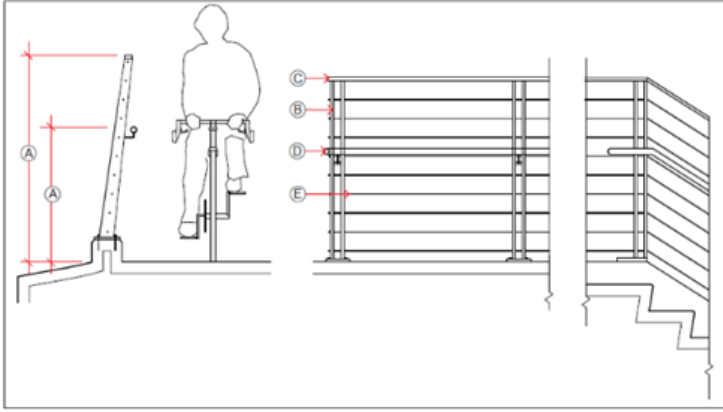


Visualization of bicycle and pedestrian bridge



Bicycle and pedestrian bridge (Aug. 30)

Winter 2023/2024 Project Milestones



Bicycle and pedestrian bridge railing



Montlake Boulevard



Lake Washington Blvd.



24th Ave & HOV lighting



SR520 Lighting



Achillea spp. (Yarrow)
3'-4' ht.



Agropyron spicatum (Bluebunch
Wheatgrass) 1.5'-4' ht.



Allium cernuum (Nodding
Onion) 1-3' ht.



Clarkia amoena (Godetia 'Farewell to Spring')
0.5'-3' ht.



Coreopsis lanceolata (Lance-leaf
Coreopsis) 2' ht.

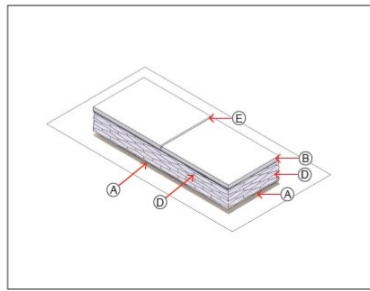
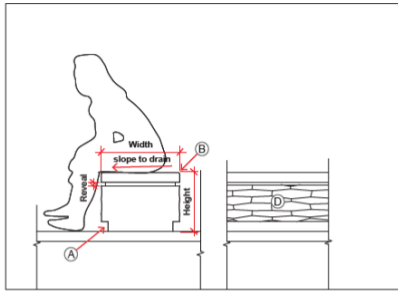
Note: Examples of fixtures only. Items may vary.

Winter 2023/2024 Project Milestones

January 2024 -
Complete the transit
stops on top of the
Montlake lid.



Winter 2023/2024 Project Milestones



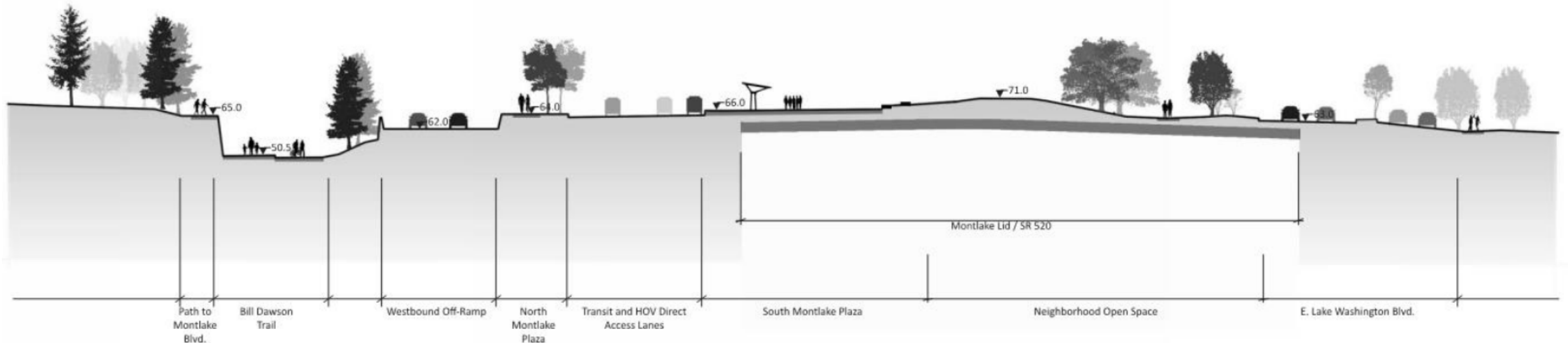
Winter 2023/2024 Project Milestones

January 2024 – Complete sidewalks, trails, and landscaping on the Montlake lid.

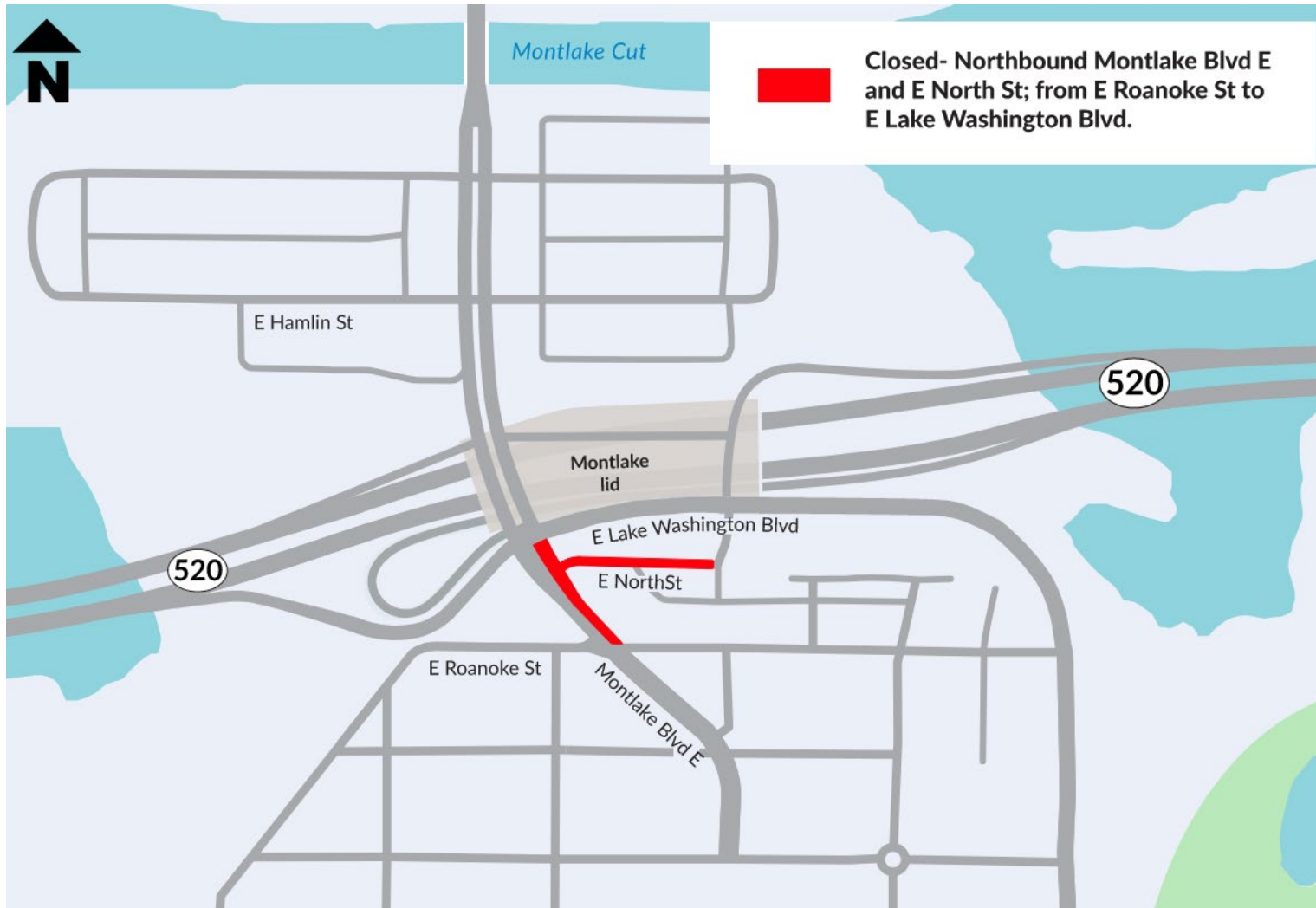


Winter 2023/2024 Project Milestones

Cross section of Montlake lid, looking east

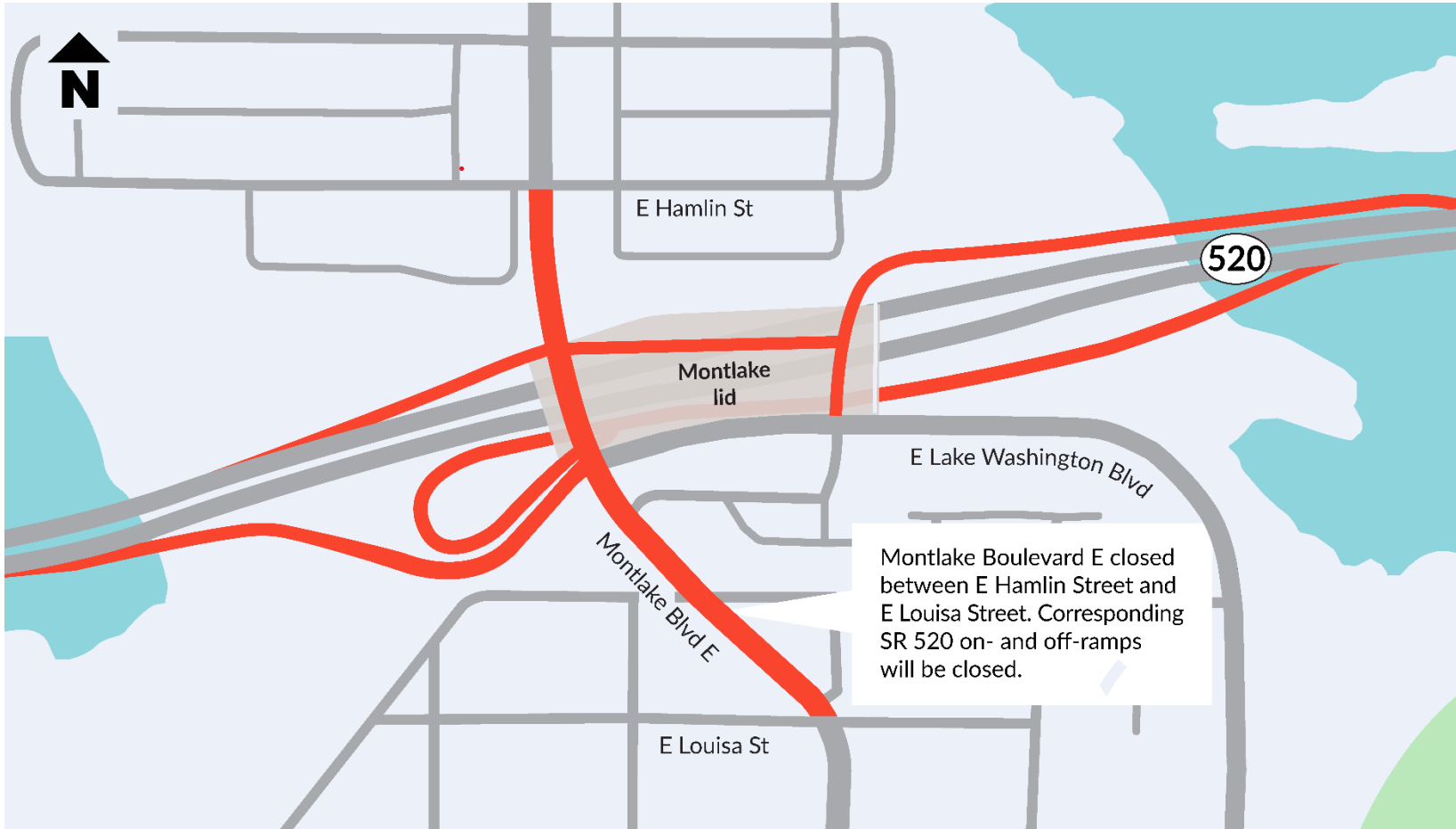


Upcoming closure



Oct. 18 and 19: SPU Closure of northbound Montlake Boulevard from East Roanoke Street and Lake Washington Boulevard.

Upcoming closures



Oct. 27 – 30 & Nov 3 - 6: Full closures of Montlake Boulevard from East Louisa Street to East Hamlin Street

Closures through the end of the year

These dates are planned weekend closures of SR 520 or Montlake Boulevard. Additional closures may occur during weekends or weekdays. All dates are pending WDSOT and SDOT approvals.

- Oct. 27 – 30
- Nov. 3 – 6
- Nov 17 – 20
- Dec 1 – 4
- Dec 8 – 11



What to expect: Noise and vibration

- Different types of equipment result in different levels and kinds of noise and vibration.
- Electronic noise and vibration meters record levels throughout the project area.
- Vibration monitors collect data in the field and immediately alert the project team when readings are outside the set tolerances.
- Nighttime construction has stricter rules for noise levels and equipment use.
- We've received a Major Public Project Construction Noise Variance (MPPCNV) permitting higher than normal decibel levels between the hours of 10 p.m. and 7 a.m.
- Crews may work 24 hours a day, seven days a week throughout construction.
- Typical work hours for the loudest work:
 - 7 a.m. to 10 p.m. weekdays
 - 9 a.m. to 10 p.m. weekends and holidays
 - Impact pile driving has stricter work hours and will occur:
 - 8 a.m. to 5 p.m. weekdays
 - 9 a.m. to 5 p.m. weekends
- Independent noise monitors will be present for night work to ensure compliance with specified noise levels.

Our 24-hour hotline, **206-775-8885**, is the best way to report noise and vibration concerns and to have questions addressed in the moment.

Visit the SR 520 Construction Corner to view the MPPCNV, read up on the allowable nighttime decibel levels, or read our weekly noise report:
www.sr520construction.com/ManagingConstructionEffects

You're invited: Montlake Boulevard Signage Community Meeting



Montlake Boulevard visualization with sign bridge status and locations (labeled in green boxes). Note: Visualizations are subject to modification and may not be fully accurate as adjustments are still possible.

Montlake Boulevard signage survey and community meeting reminder

Thursday, Oct 26. 5:30 p.m. to 7 p.m. at the Queen City Yacht Club or Virtually



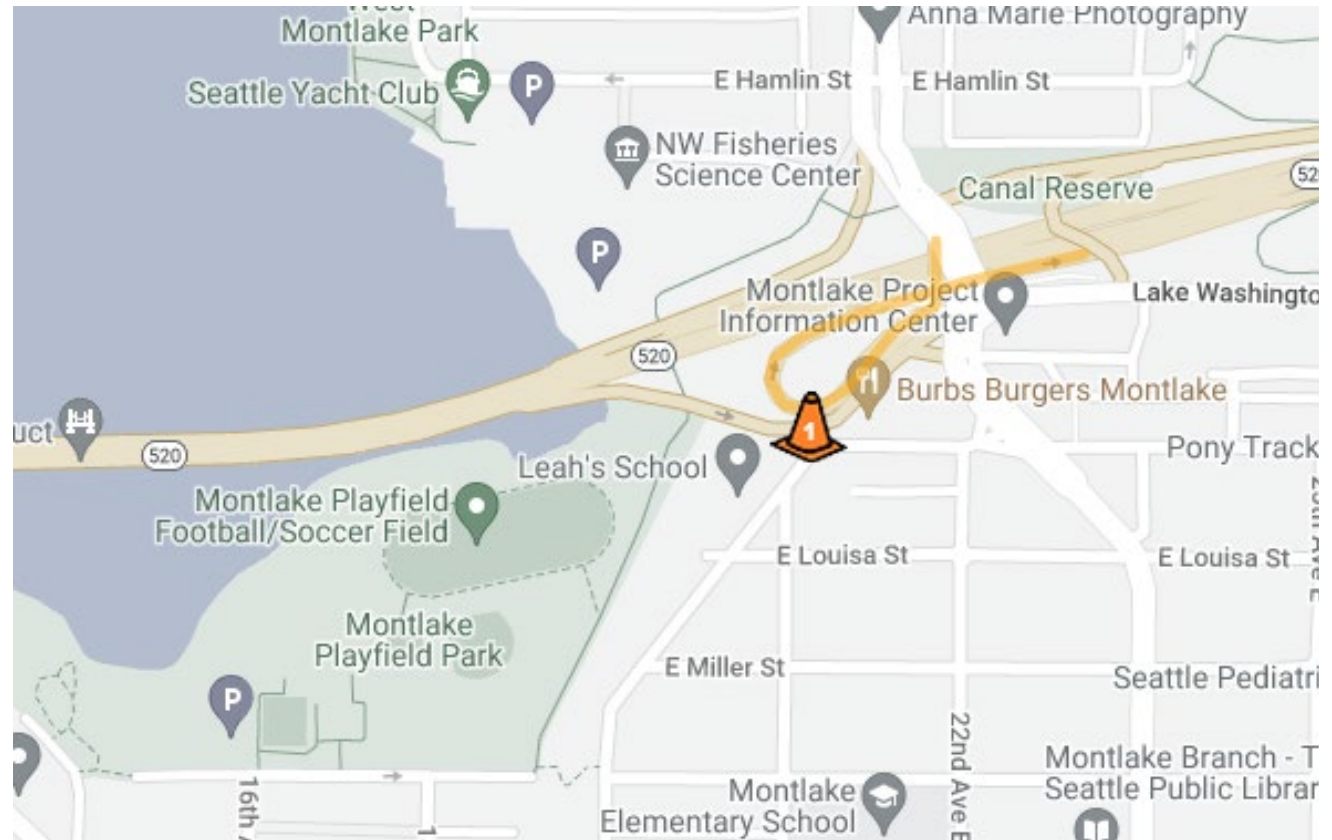
Survey and RSVP link:

<https://survey.alchemer.com/s3/7545917/Montlake-Project-Signage>

Note: The survey will close tonight at 11:59 p.m.

How to stay informed

- Call our 24-hour hotline: [206-775-8885](tel:206-775-8885)
- Email us with questions: sr520bridge@wsdot.wa.gov
- Visit the Montlake Project website: https://bit.ly/520montlake_program
- Visit the SR 520 Construction Corner to learn more about upcoming construction: www.sr520construction.com
- Follow us on Twitter: [@wsdot_520](https://twitter.com/wsdot_520)
- Sign up to receive our email updates at sr520bridge@wsdot.wa.gov
- Watch construction in “real time” on construction cameras: <http://bit.ly/520cams>
- Participate in our online meetings and events



Example of Construction Corner map



Comments and questions?

