

Montlake Project

Monthly Construction Update

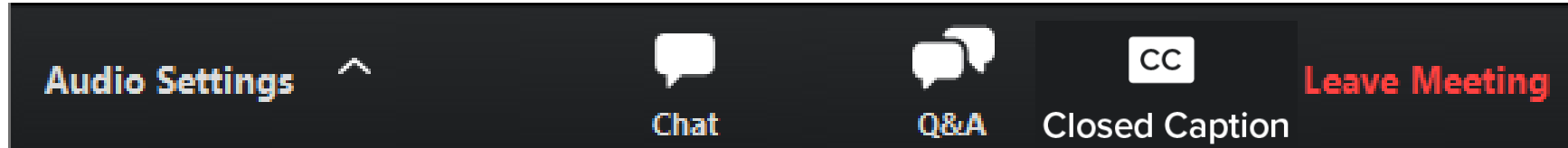
Aug. 16, 2023

How to participate in the webinar

All attendees are muted.
To adjust your audio settings during the meeting, click on **Audio Settings**.



Please use the **Q&A window** to ask questions or offer comments.



CHAT is disabled during the presentation. Please communicate with the team through the **Q&A window**.



Turn on **closed captions** if you want to view captions during the meeting. They are available in English only.



Agenda

- Current and upcoming work
- How to stay informed
- Comments and questions



Looking west over the project area. (July 25)

Major project elements

The Montlake Project will improve transportation for motorized and nonmotorized travel along the SR 520 corridor, including:

- A new eastbound bridge
- Montlake lid
- Bicycle and pedestrian bridge

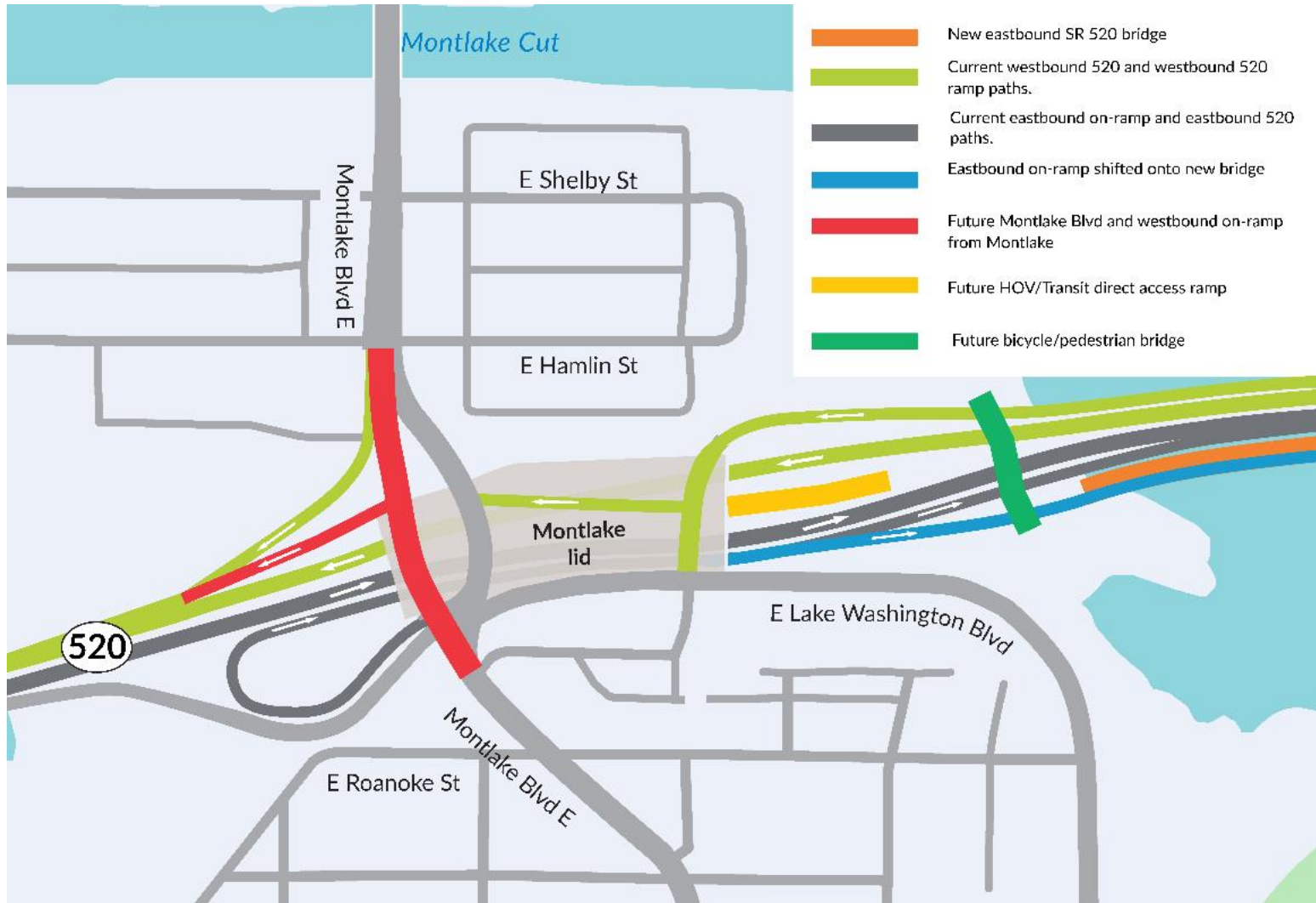


Illustration of major project elements.



New eastbound bridge. July 6.

Summer 2023 Project Milestones



Phased opening of the eastbound SR 520 bridge.

Summer 2023 Project Milestones

- July – August 2023 - Shift eastbound traffic onto the new SR 520 bridge between Montlake Boulevard and the floating bridge.
- September 2023 – Complete Lake Washington Boulevard construction between Montlake Boulevard and East Roanoke Street.
- September 2023 – Move Montlake Boulevard traffic into its final configuration over the new lid.



On the left is the new eastbound SR 520 bridge. (Aug. 10)

Summer 2023 Project Milestones

- July - August 2023 - Shift eastbound traffic onto the new SR 520 bridge between Montlake Boulevard and the floating bridge.
- September 2023 – Complete Lake Washington Boulevard construction between Montlake Boulevard and 24th Street
- September 2023 – Move Montlake Boulevard traffic into its final configuration over the new lid.



The intersection of Lake Washington Boulevard and Montlake Boulevard. (Aug. 8)

Summer 2023 Project Milestones

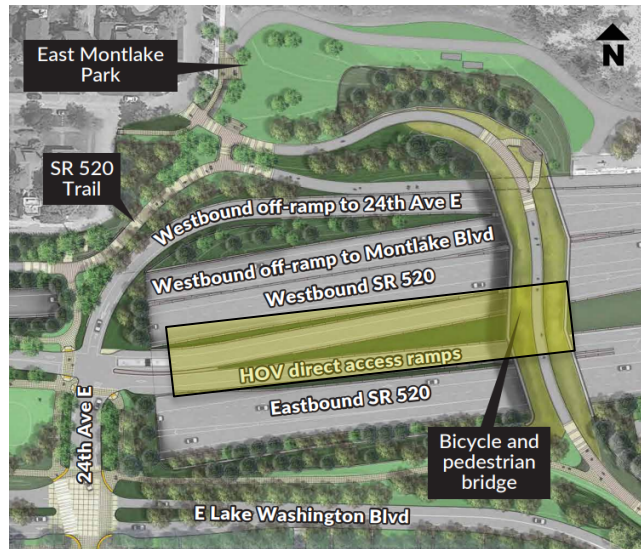
- July - August 2023 - Shift eastbound traffic onto the new SR 520 bridge between Montlake Boulevard and the floating bridge.
- September 2023 – Complete Lake Washington Boulevard construction between Montlake Boulevard and East Roanoke Street.
- September 2023 – Move Montlake Boulevard traffic into its final configuration over the new lid.



The intersection of Montlake Boulevard and SR 520. (July 25)

Fall/Winter 2023 Project Milestones

- November 2023 – Complete construction of the HOV direct access ramps on the east side of the Montlake lid.



HOV direct access ramp work zone is highlighted in yellow.



HOV direct access ramp. (July 25)

Fall/Winter 2023 Project Milestones

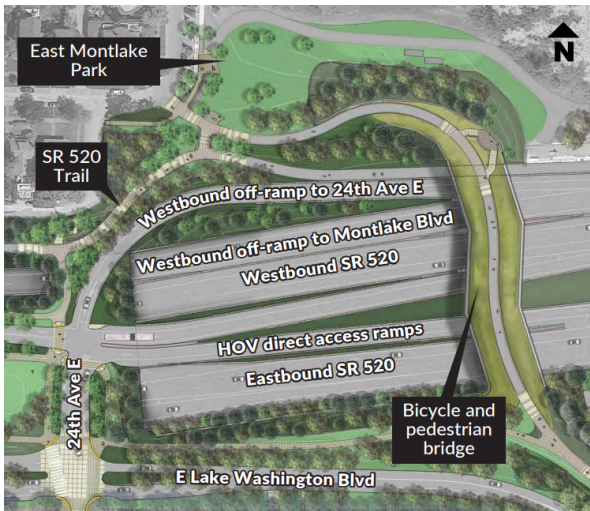
- November 2023 – Connect the SR 520 regional trail to the Bill Dawson Trail through a tunnel under Montlake Boulevard.



*Eastbound entrance to the tunnel under Montlake Boulevard
(July 26)*

Winter 2023/2024 Project Milestones

- December 2023 – Complete the bike and pedestrian bridge over SR 520 connecting Lake Washington Boulevard to East Park Drive.



Bicycle and pedestrian bridge across SR 520. (Aug. 8)

Winter 2023/2024 Project Milestones

- December 2023 - Complete the transit stops on top of the Montlake lid.
- January 2024 – Complete sidewalks, trails, and landscaping on the Montlake lid.

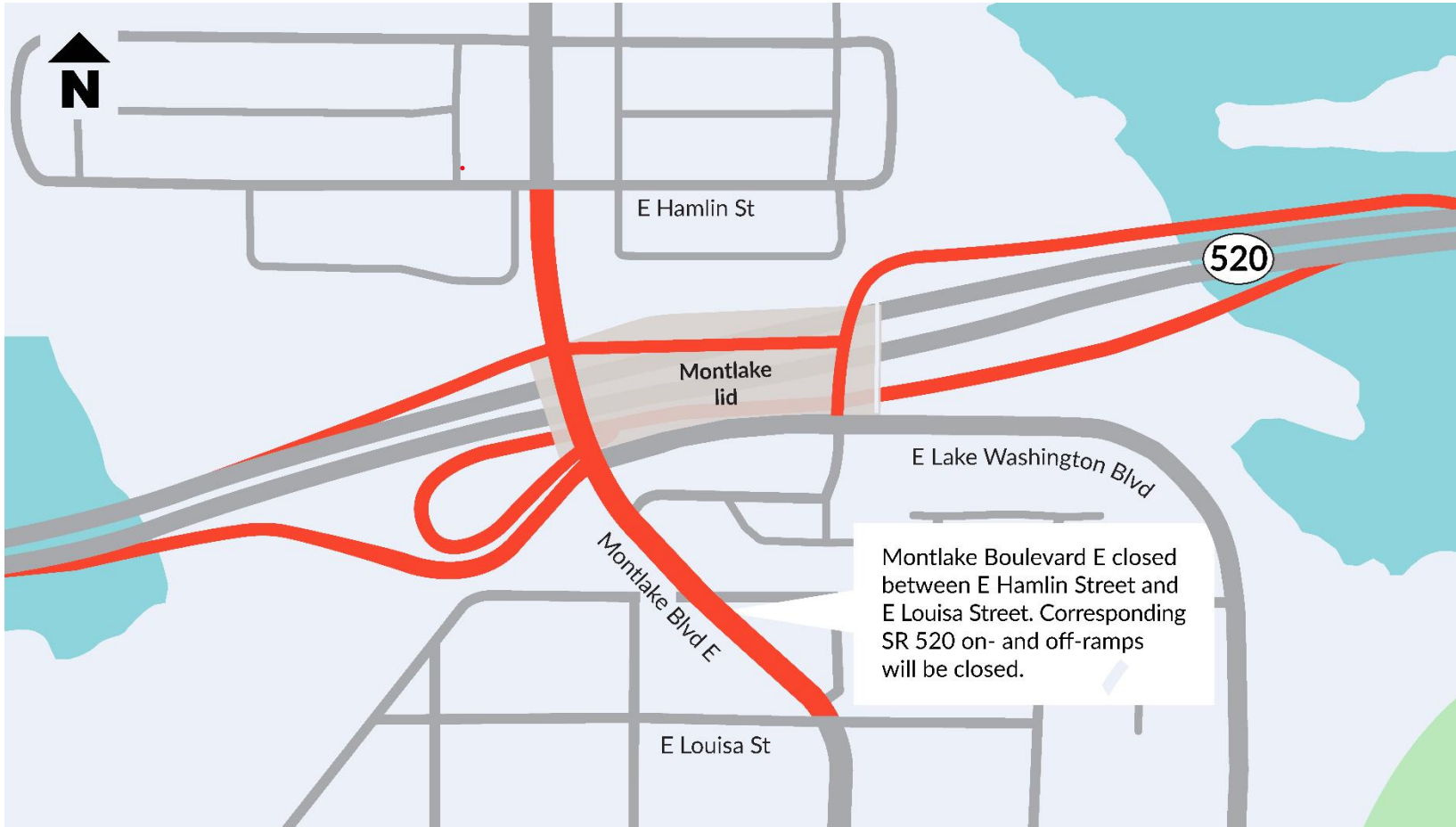


Winter 2023/2024 Project Milestones

- December 2023 – Complete the bike and pedestrian bridge over SR 520 connecting Lake Washington Boulevard to East Park Drive.
- December 2023 - Complete the transit stops on top of the Montlake lid.
- January 2024 – Complete sidewalks, trails, and landscaping on the Montlake lid.

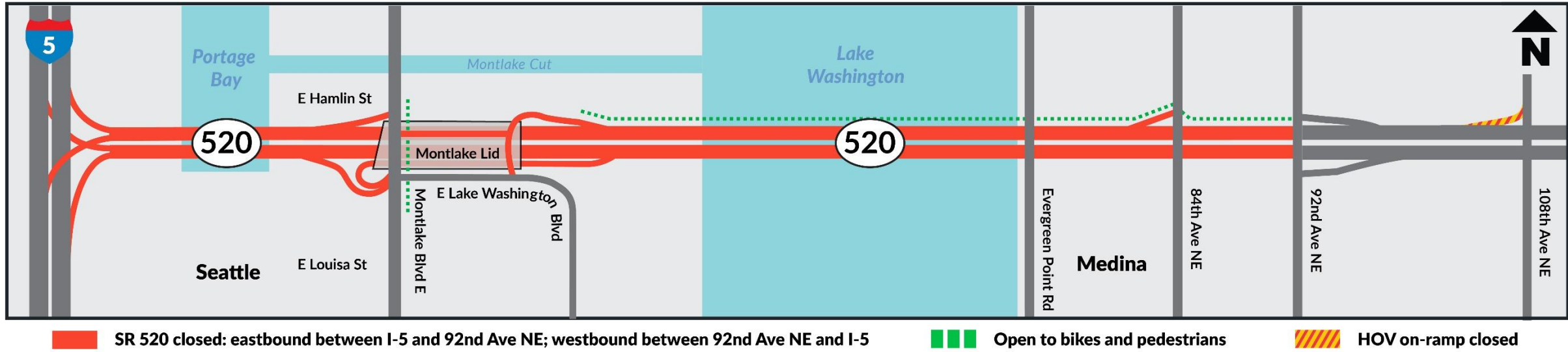


Other upcoming closures



Aug. 18-21 and Sept. 15-18:
Full closures of Montlake
Boulevard from East Louisa
Street to East Hamlin Street,
including all ramps

Other upcoming closures



Aug. 25 - 28: Full closure of SR 520 (eastbound and westbound) between I-5 and the Eastside

What to expect: Noise and vibration

- Different types of equipment result in different levels and kinds of noise and vibration.
- Electronic noise and vibration meters record levels throughout the project area.
- Vibration monitors collect data in the field and immediately alert the project team when readings are outside the set tolerances.
- Nighttime construction has stricter rules for noise levels and equipment use.
- We've received a Major Public Project Construction Noise Variance (MPPCNV) permitting higher than normal decibel levels between the hours of 10 p.m. and 7 a.m.
- Crews may work 24 hours a day, seven days a week throughout construction.
- Typical work hours for the loudest work:
 - 7 a.m. to 10 p.m. weekdays
 - 9 a.m. to 10 p.m. weekends and holidays
 - Impact pile driving has stricter work hours and will occur:
 - 8 a.m. to 5 p.m. weekdays
 - 9 a.m. to 5 p.m. weekends
- Independent noise monitors will be present for night work to ensure compliance with specified noise levels.

Our 24-hour hotline, **206-775-8885**, is the best way to report noise and vibration concerns and to have questions addressed in the moment.

Visit the SR 520 Construction Corner to view the MPPCNV, read up on the allowable nighttime decibel levels, or read our weekly noise report:
www.sr520construction.com/ManagingConstructionEffects

How to stay informed

- Call our 24-hour hotline: [206-775-8885](tel:206-775-8885)
- Email us with questions: sr520bridge@wsdot.wa.gov
- Visit the Montlake Project website: https://bit.ly/520montlake_program
- Visit the SR 520 Construction Corner to learn more about upcoming construction: www.sr520construction.com
- Follow us on Twitter: [@wsdot_520](https://twitter.com/wsdot_520)
- Sign up to receive our email updates at sr520bridge@wsdot.wa.gov
- Watch construction in “real time” on construction cameras: <http://bit.ly/520cams>
- Participate in our online meetings and events



Example of Construction Corner map

Summer Construction

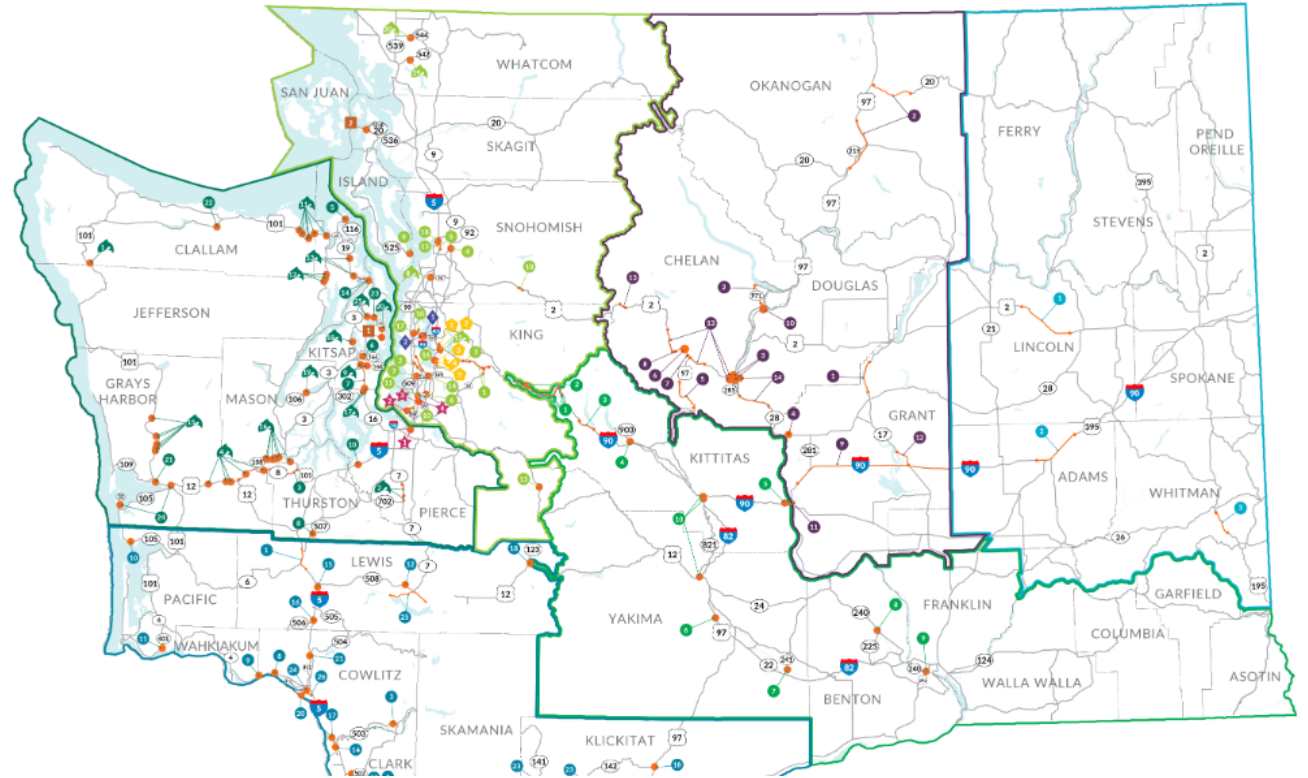
<https://wsdotblog.blogspot.com/2023/05/summer-construction.html>

116 projects planned on and near state highways this summer

Here are some other suggestions to help keep everyone moving:

- Stay informed – there will be lots of projects and some details may change – so staying up to date as you plan your travel and before you head out the door will be key.
- Look into other travel options when possible.
- Use transit – and keep in mind more people may be using these options so they may be more full than usual.
- Carpool
- If you can't delay your travel, give yourself plenty of extra time to reach your destination.
- Pre-program vehicle radios to 530 AM and 1610 AM for highway advisory radio alerts – and be alert for other stations listed on notice signs in some areas.
- Carry extra food and water as an added precaution for emergencies or unexpected stops.
- Stay calm. Delays are frustrating, but no meeting or event is worth risking injury or death. Please heed all closure or detour directions, they're there for your safety.

Know Before You Go!



2023 Statewide Construction Map – Know Before You Go!



Comments and questions?

