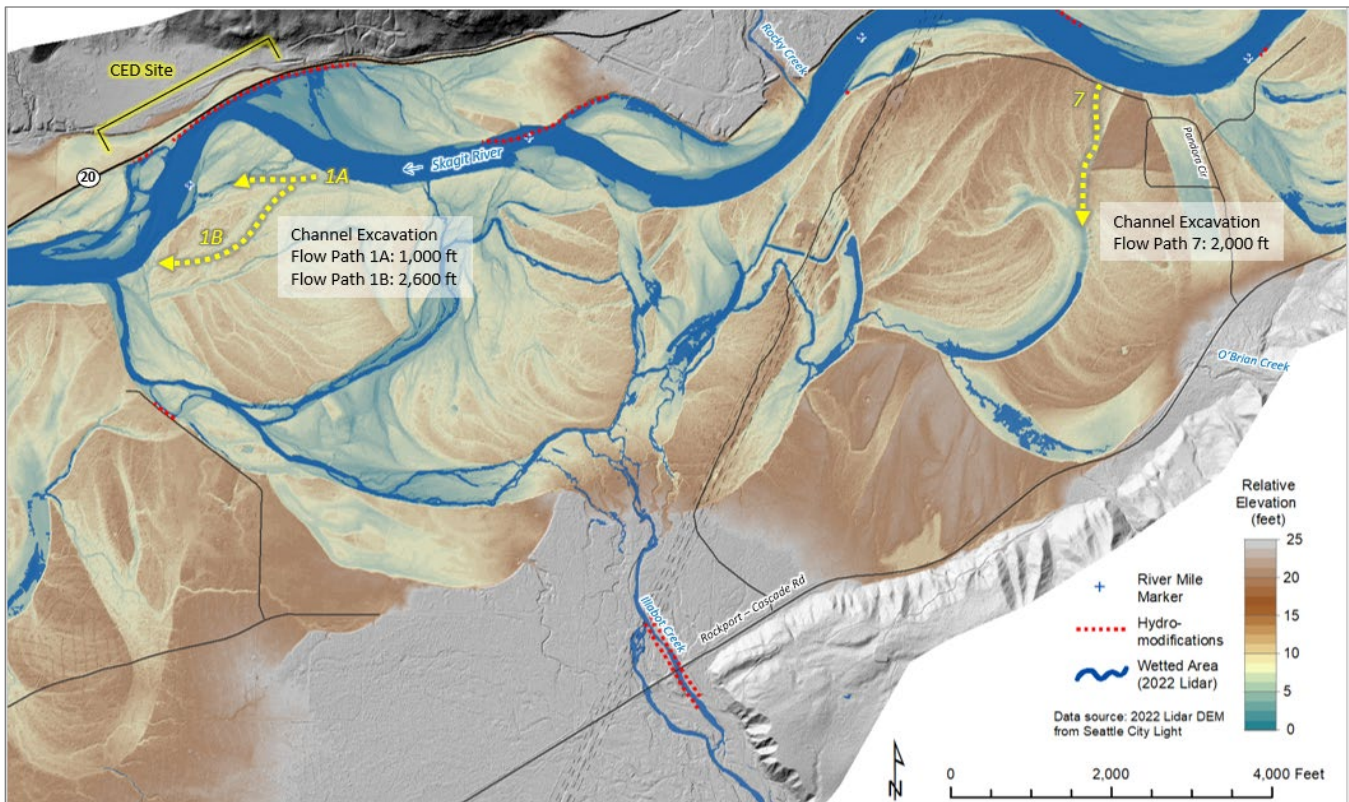


# WSDOT SR 20 Skagit O'Brian Reach Feasibility Study Preliminary Summary of Findings and Alternatives Workshop #2, June 1, 2023

## Summary of Findings

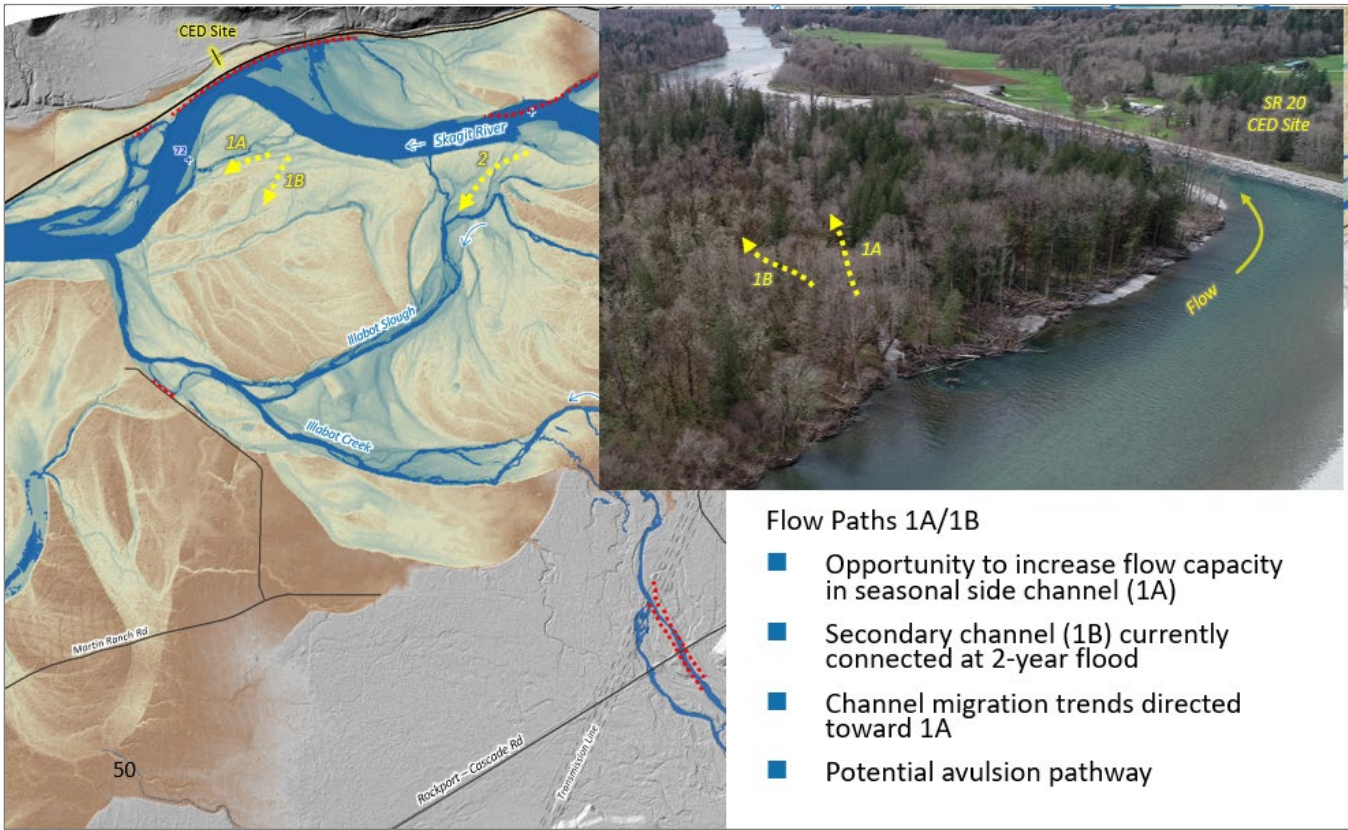
Alternative 1- Flow Paths 1A and 1B	Alternative 2 – Flow Paths 1A, 1B, and 7
<p><b>Fish Habitat – increase over existing</b></p> <ul style="list-style-type: none"> <li>• Chinook Juvenile: +5-6 acres</li> <li>• Steelhead Juvenile: +4-5 acres</li> <li>• No loss of diversity</li> <li>• Moderate reduction in stranding risk</li> </ul> <p><b>Infrastructure</b></p> <ul style="list-style-type: none"> <li>• Minor reduction in flood depth (.35 ft at Q10)</li> <li>• Minor reduction in erosion risk (.7 ft/s at Q10)</li> <li>• No effect on adjacent property or infrastructure</li> <li>• No effect on Barnaby Project</li> </ul> <p><b>Other</b></p> <ul style="list-style-type: none"> <li>• Sustainability risk (avulsion at 1A)</li> </ul>	<p><b>Fish Habitat – increase over existing</b></p> <ul style="list-style-type: none"> <li>• Chinook Juvenile: +8-15 acres</li> <li>• Steelhead Juvenile: +9-18 acres</li> <li>• No loss of diversity</li> <li>• Moderate reduction in stranding risk</li> </ul> <p><b>Infrastructure</b></p> <ul style="list-style-type: none"> <li>• Minor reduction in flood depth (.4 ft at Q10)</li> <li>• Minor reduction in erosion risk (.7 ft/s at Q10)</li> <li>• Slight increase in flow depth on adjacent property (0.1 ft at Q10)</li> <li>• No effect on Barnaby Project</li> </ul> <p><b>Other</b></p> <ul style="list-style-type: none"> <li>• Higher cost</li> </ul>

## Location of Flow Paths 1A, 1B and 7





## Flow Paths 1A and 1B



## Flow Path 7

