

Montlake Project

Monthly Construction Update

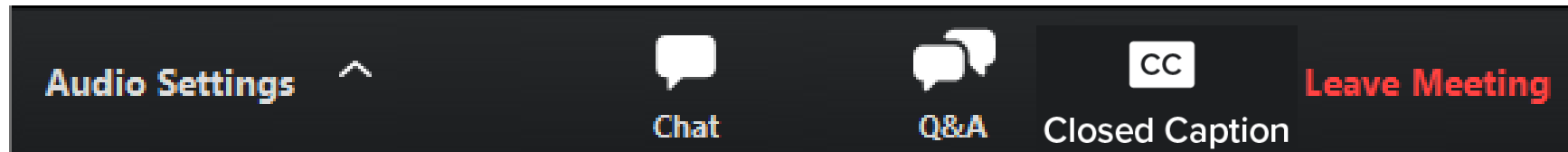
March 15, 2023 (Virtual)

How to participate in the webinar

All attendees are muted.
To adjust your audio settings during the meeting, click on **Audio Settings**.



Please use the **Q&A window** to ask questions or offer comments.



CHAT is disabled during the presentation. Please communicate with the team through the **Q&A window**.



Turn on **closed captions** if you want to view captions during the meeting. They are available in English only.



Agenda

- Current and upcoming work
- How to stay informed
- Comments and questions



Looking west over the project area. (Feb. 26)

Major project elements

The Montlake Project will improve transportation for motorized and nonmotorized travel along the SR 520 corridor, including:

- A new eastbound bridge
- Montlake lid
- Bicycle and pedestrian bridge

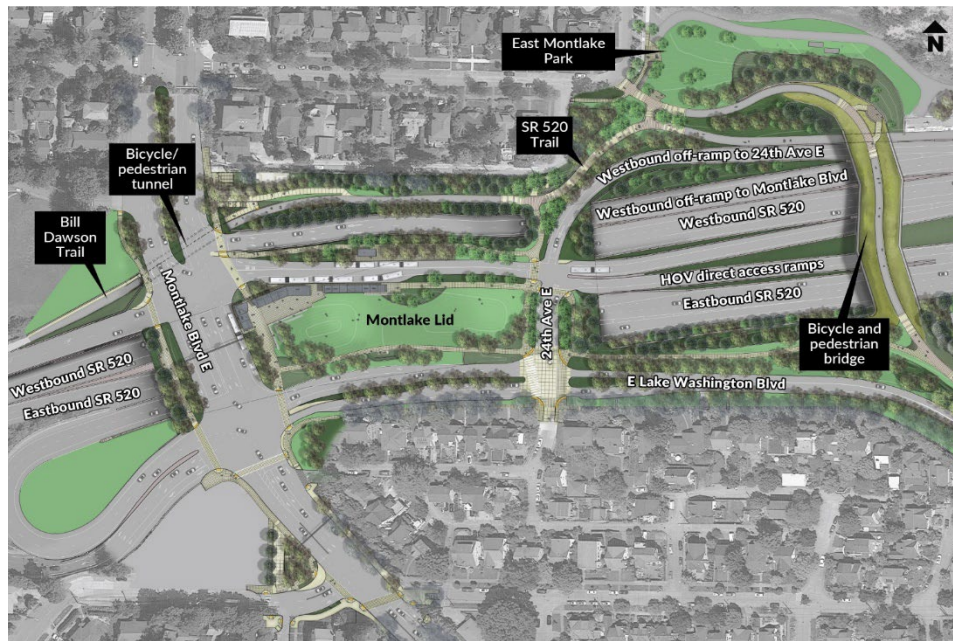


Illustration of major project elements.



Crew member alongside bike and pedestrian bridge girders. (Feb. 26)

Summer 2023 Project Milestones

- July 2023 - Shift eastbound traffic onto the new SR 520 bridge between Montlake Boulevard and the floating bridge.
- September 2023 – Complete Lake Washington Boulevard construction between Montlake Boulevard and East Roanoke Street.
- September 2023 – Move Montlake Boulevard traffic into its final configuration over the new lid.



Connecting point of traffic onto the floating bridge across Lake Washington. (March 1)

Fall/Winter 2023 Project Milestones

- November 2023 – Complete construction of the HOV direct access ramps on the east side of the Montlake lid.
- November 2023 – Connect the SR 520 regional trail to the Bill Dawson Trail through a tunnel under Montlake Boulevard.



Girders installed for the HOV direct access ramps. (March 1)

Winter 2023/2024 Project Milestones

- December 2023 – Complete the bike and pedestrian bridge over SR 520 connecting Lake Washington Boulevard to East Park Drive.
- December 2023 - Complete the transit stops on top of the Montlake lid.
- January 2024 – Complete sidewalks, trails, and landscaping on the Montlake lid.



Girders installed for the bike and pedestrian bridge. (March 1)

Building the Montlake lid

Once the lid is complete in fall 2023, we will shift Montlake Boulevard to its final configuration.



West end of the Montlake lid. (March 1)



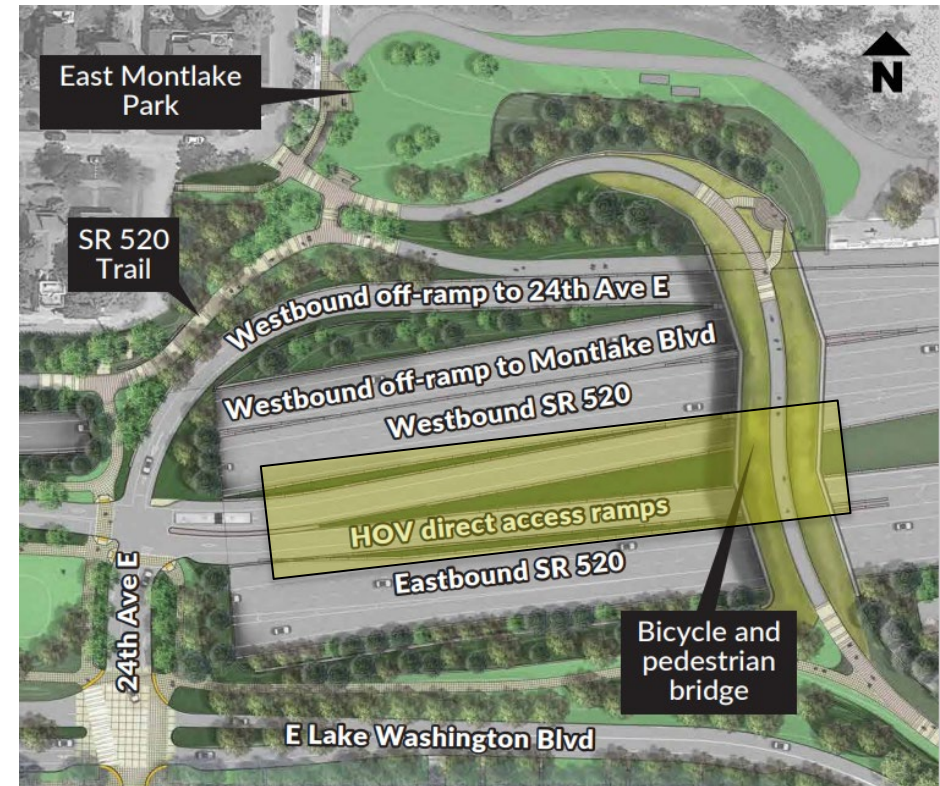
Rendering of the final configuration.

HOV Direct Access Ramps

In February, crews placed seven girders to build the future high-occupancy vehicle direct access ramps to the Montlake lid.



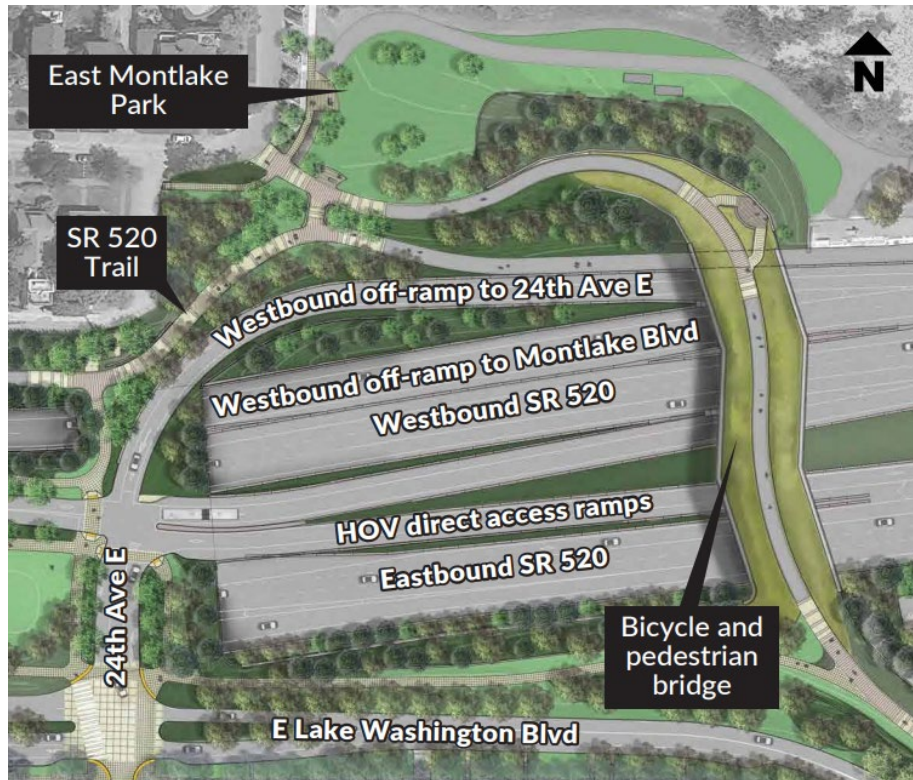
Girders installed for the HOV direct access ramps, (March 1)



HOV direct access ramp work zone is highlighted in yellow.

Bicycle and pedestrian bridge

On the weekend of Feb. 24-27, crews installed 30 girders for the bicycle and pedestrian bridge across SR 520.



Girders installed for the future bicycle and pedestrian bridge (March 1)

Bridge construction

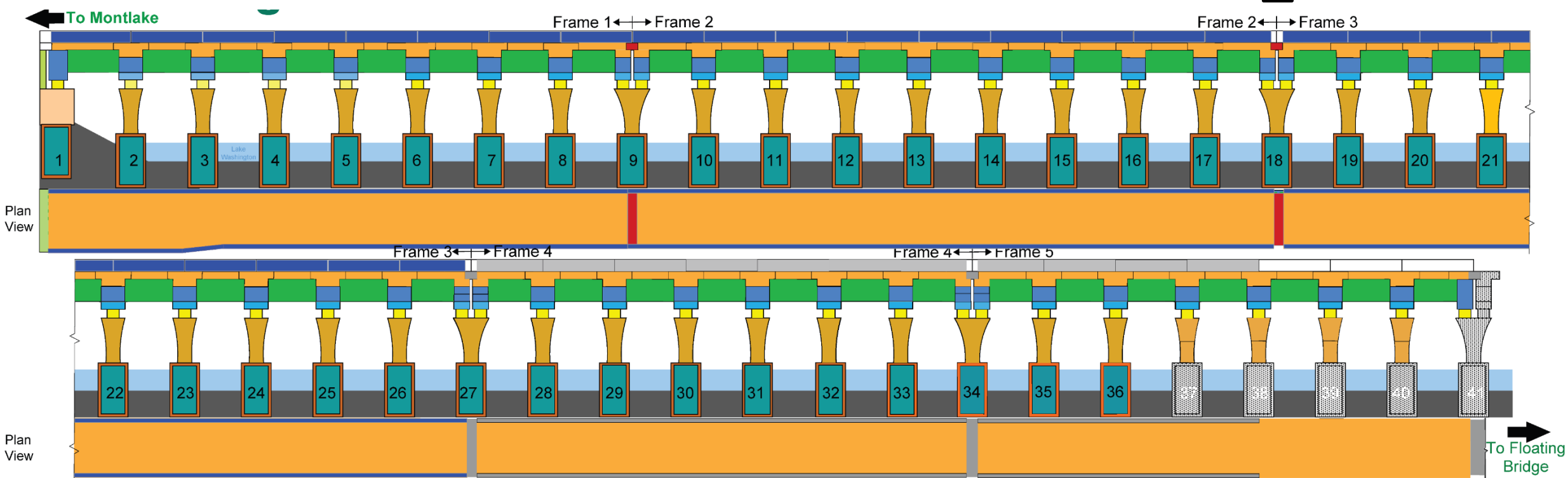
When complete in July 2023, eastbound traffic will shift onto the new SR 520 bridge between Montlake Boulevard and the floating bridge.



Looking east over new concrete on the SR 520 floating bridge. (March 1)

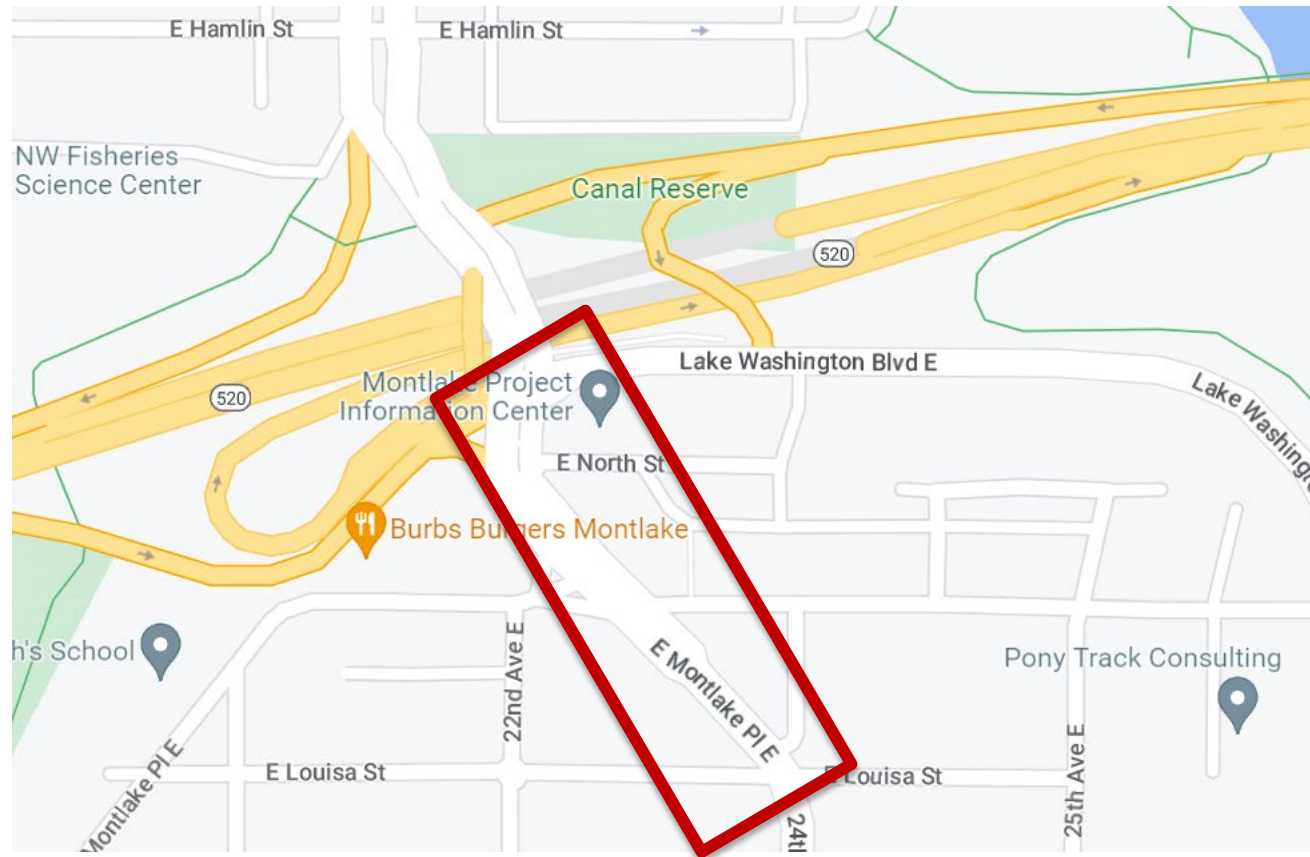
Bridge construction progress

- Barrier
- Expansion joints
- Girders
- Bridge deck

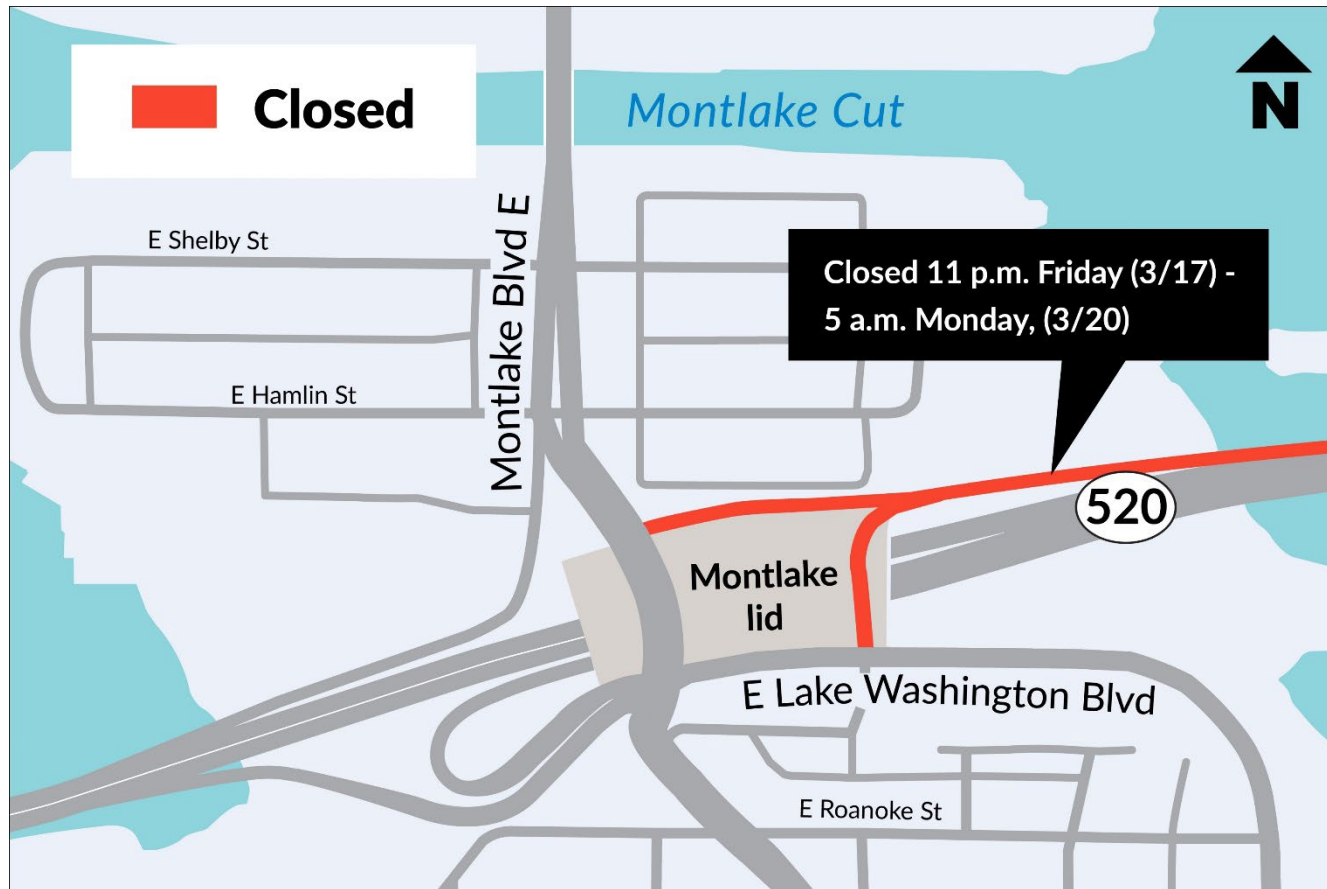


Montlake Place drainage

Over the March 10-13 weekend, crews installed drainage and removed trees along the east side of East Montlake Place East between East Louisa Street and Lake Washington Boulevard East.



Westbound SR 520 off-ramp closures, March 17 - 20



From 11 p.m. Friday, March 17, until 5 a.m. Monday, March 20 the westbound SR 520 offramps to Montlake Boulevard East and 24th Avenue East will be closed. Crews will be installing electrical cables under the roadway.

Northbound lane of Montlake Boulevard closed, March 20 - 24

From Monday, March 20, until Friday, March 24, between 7 a.m. to 10 p.m., the right lane of northbound Montlake Boulevard will be closed from East Roanoke Street to Lake Washington Boulevard East.



East Montlake Place East from East Roanoke Street to Lake Washington Boulevard East. (March 1)

SR 520 westbound off-ramp closures, March 31 – April 3

The westbound SR 520 off-ramps to Montlake Boulevard East and 24th Avenue East will be closed from 11 p.m. on Friday, March 31, to 5 a.m. on Monday, April 3.



What to expect: Noise and vibration

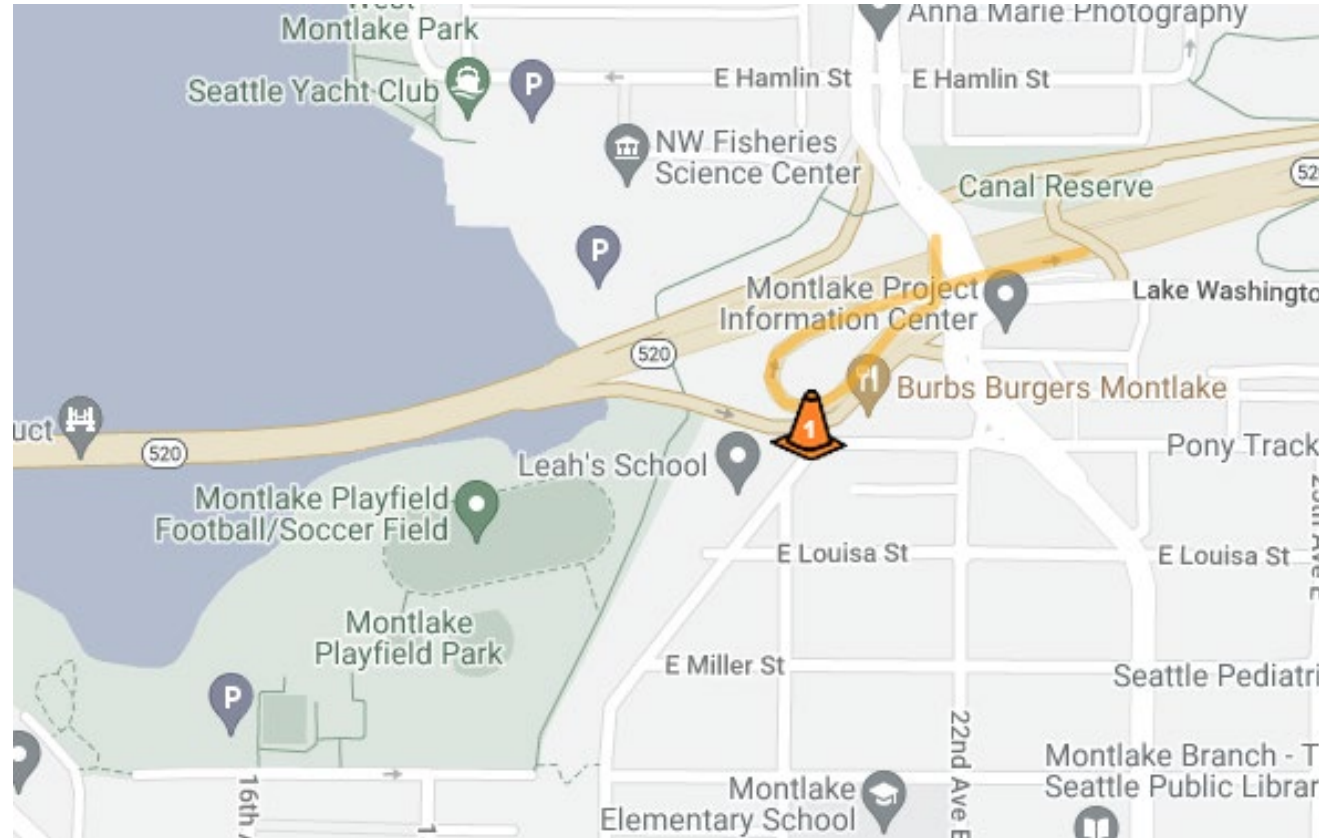
- Different types of equipment result in different levels and kinds of noise and vibration.
- Electronic noise and vibration meters record levels throughout the project area.
- Vibration monitors collect data in the field and immediately alert the project team when readings are outside the set tolerances.
- Nighttime construction has stricter rules for noise levels and equipment use.
- We've received a Major Public Project Construction Noise Variance (MPPCNV) permitting higher than normal decibel levels between the hours of 10 p.m. and 7 a.m.
- Crews may work 24 hours a day, seven days a week throughout construction.
- Typical work hours for the loudest work:
 - 7 a.m. to 10 p.m. weekdays
 - 9 a.m. to 10 p.m. weekends and holidays
 - Impact pile driving has stricter work hours and will occur:
 - 8 a.m. to 5 p.m. weekdays
 - 9 a.m. to 5 p.m. weekends
- Independent noise monitors will be present for night work to ensure compliance with specified noise levels.

Our 24-hour hotline, **206-775-8885**, is the best way to report noise and vibration concerns and to have questions addressed in the moment.

Visit the SR 520 Construction Corner to view the MPPCNV, read up on the allowable nighttime decibel levels, or read our weekly noise report:
www.sr520construction.com/ManagingConstructionEffects

How to stay informed

- Call our 24-hour hotline: [206-775-8885](tel:206-775-8885)
- Email us with questions: sr520bridge@wsdot.wa.gov
- Visit the Montlake Project website: https://bit.ly/520montlake_program
- Visit the SR 520 Construction Corner to learn more about upcoming construction: www.sr520construction.com
- Follow us on Twitter: [@wsdot_520](https://twitter.com/wsdot_520)
- Sign up to receive our email updates at sr520bridge@wsdot.wa.gov
- Watch construction in “real time” on construction cameras: <http://bit.ly/520cams>
- Participate in our online meetings and events



Example of Construction Corner map



Comments and questions?

