



Washington State Ferries Service Restoration Plan Progress Report



Updated February 14, 2023

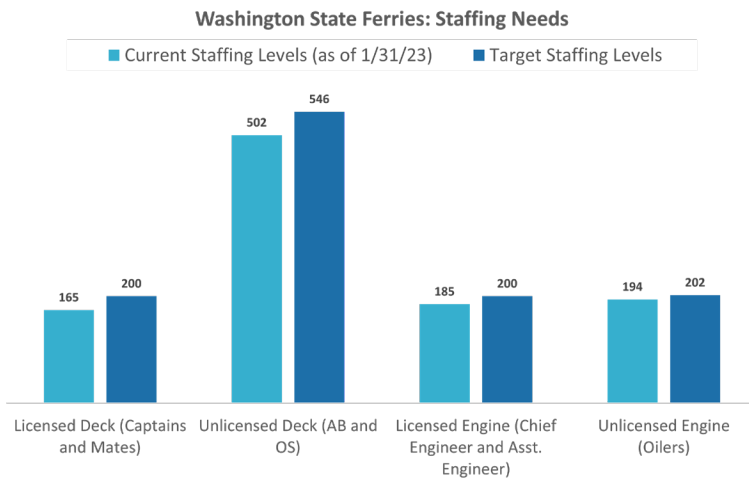
Overview

Washington State Ferries is incrementally adding service to meet increasing demand as the ferry system continues to recover from the COVID-19 pandemic. A return to full capacity of the system is dependent on several variables, including:

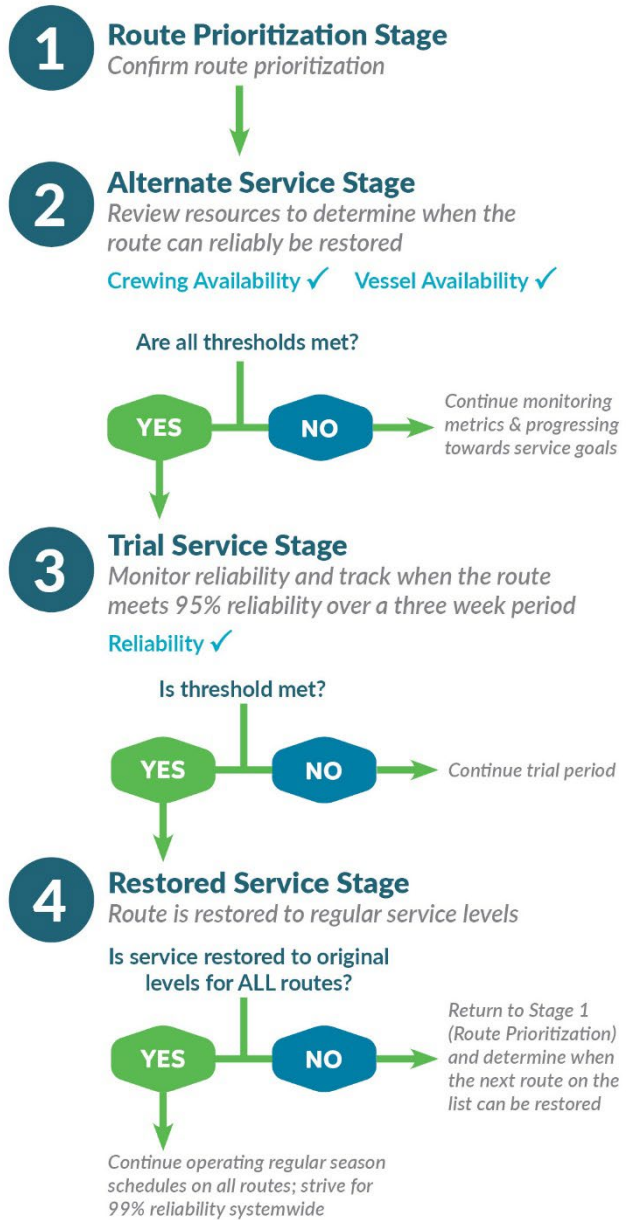
- Ridership levels and accommodating the seasonal increase in summer peak season ridership.
- The ability of WSF to recruit, hire and train new employees to fill key positions.
- The rate of retirements and other separations that contribute to overall staffing levels.
- Lack of vessels due to unanticipated breakdowns and an aging fleet.

Progress toward reaching targeted staffing levels

In 2022, WSF hired 233 new employees, 202 of whom are fleet personnel. However, 141 employees left the agency last year due to retirement or other reasons, resulting in a net gain of 61 new fleet employees.



Service Restoration Process

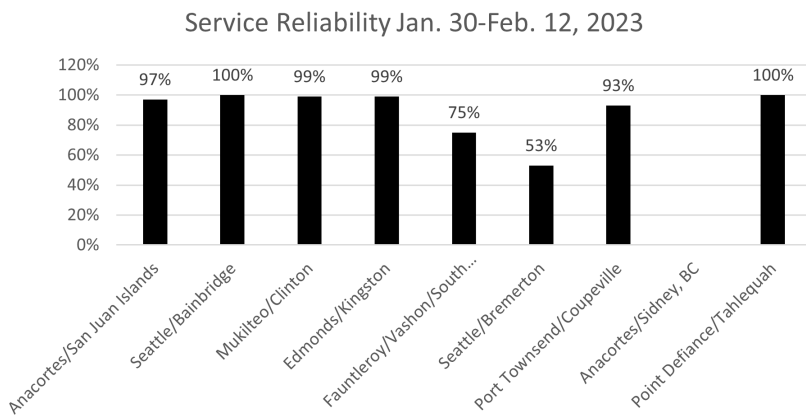


Ferry Service Restoration

WSF has prioritized ferry routes based on ridership, service performance, availability and directness of travel alternatives, and vessel and crew availability.

Service Reliability

During the trial stage, WSF’s target is 95% reliability over three weeks before considering a route fully restored. This chart illustrates current reliability for all routes based on a regular schedule.



Upcoming Service Changes

- The Edmonds/Kingston route started its Trial Service Stage on Jan 1. WSF is monitoring the route’s reliability closely and once it reaches 95% reliability for a three-week period it will be considered fully restored.
- Early in 2023, WSF will begin trialing full, three boat service on the Fauntleroy/Vashon/Southworth route.
- The timing of full restoration of the Seattle/Bremerton and Port Townsend/Coupeville routes is dependent on the number of new mates who complete training in spring 2023. WSF does not anticipate being able to restore service on the Anacortes/Sidney, B.C. route any sooner than Summer 2023.

Route	Restoration Stage
ANACORTES/ SAN JUAN ISLANDS	4 Regular Service
SEATTLE/ BAINBRIDGE	4 Regular Service
MUKILTEO/CLINTON	4 Regular Service
EDMONDS/KINGSTON	3 Trial Service
FAUNTLEROY/ VASHON/ SOUTHWORTH	2 Alternate Service
SEATTLE/ BREMERTON	2 Alternate Service
PORT TOWNSEND/ COUPEVILLE	Late-Fall/Winter Regular Service Late-Spring Alternate Service
ANACORTES/ SIDNEY, B.C.	No Service
POINT DEFIANCE/ TAHLEQUAH	Regular Service

Systemwide Ridership

Total 2023 ridership compared to previous years (data updated as of 2/5/23)

WASHINGTON STATE FERRIES SERVICE RESTORATION PLAN PROGRESS REPORT

