

Montlake Project

Monthly Construction Update

February 15, 2023

Major project elements

The Montlake Project will improve transportation for motorized and nonmotorized travel along the SR 520 corridor, including:

- A new eastbound bridge
- Montlake lid
- Bicycle and pedestrian bridge



Illustration of major project elements.



Girder placement on Montlake lid. (Jan. 10)

Agenda

- Project Milestones
- Current and upcoming work
- How to stay informed
- Comments and questions



Looking west over the Montlake lid. (Jan. 10)

Summer 2023 Project Milestones

- July 2023 - Shift eastbound traffic onto the new SR 520 bridge between Montlake Boulevard and the floating bridge.
- September 2023 – Complete Lake Washington Boulevard construction between Montlake Boulevard and East Roanoke Street.
- September 2023 – Move Montlake Boulevard traffic into its final configuration over the new lid.



Connecting point of traffic onto the floating bridge across Lake Washington. (Jan. 10)

Fall/Winter 2023 Project Milestones

- November 2023 – Complete construction of the HOV direct access ramps on the east side of the Montlake lid.
- November 2023 – Connect the SR 520 regional trail to the Bill Dawson Trail through a tunnel under Montlake Boulevard.



Graphic depicting connector tunnel underneath Montlake Boulevard.

Winter 2023/2024 Project Milestones

- December 2023 – Complete the Bike and Pedestrian Bridge over SR 520 connecting Lake Washington Boulevard to East Park Drive.
- December 2023 - Complete the transit stops on top of the Montlake lid.
- January 2024 – Complete sidewalks, trails, and landscaping on the Montlake lid.



Graphic depicting future sidewalks, trails and landscaping on Montlake lid.

Building the Montlake lid

In January, crews installed 40 girders to extend the lid to the west. Once complete in September 2023, we will shift Montlake Boulevard to its final configuration.



Girder installation zones.



Final girders installation during the weekend of Jan. 20-23. (Jan. 22)

Bridge construction

This month, crews are scheduled to complete a major project milestone by finishing pouring the concrete deck of the eastbound bridge.



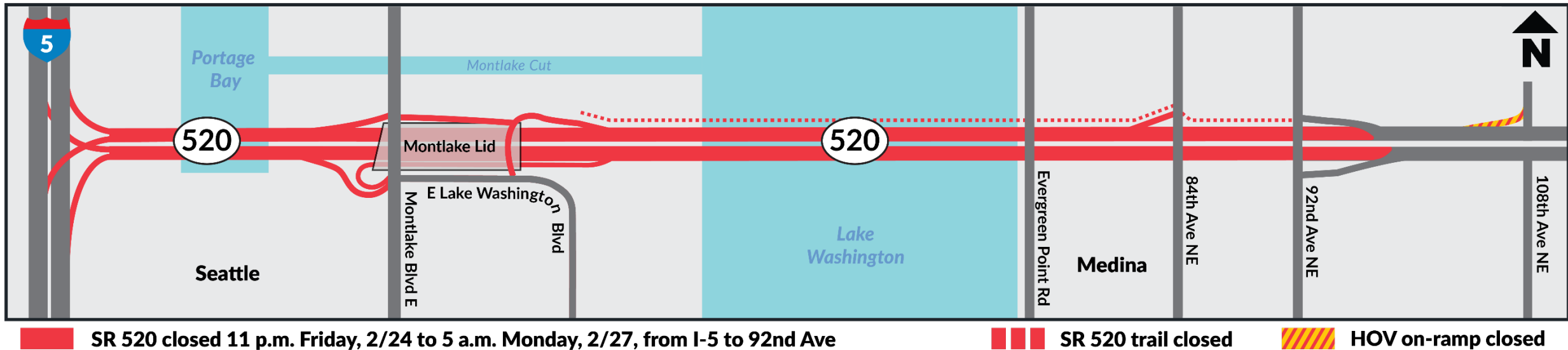
*The green re-bar is installed prior to pouring concrete.
(Nov. 9)*



*Concrete poured over green re-bar on east end on
Jan 15. (Jan. 10)*

SR 520 full closure Feb. 24 – 27

SR 520 will be closed between I-5 and 92nd Avenue Northeast from 11 p.m. Friday, Feb. 24, until 5 a.m. Monday, Feb. 27.



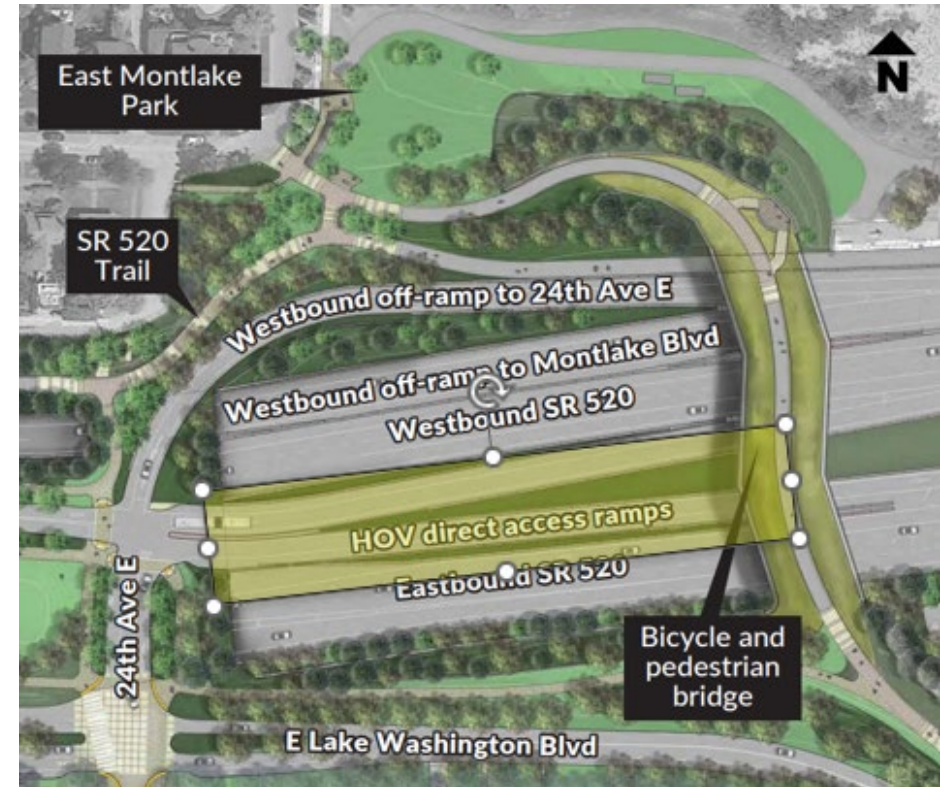
Crews will place girders for the bicycle and pedestrian bridge across SR 520 and the HOV direct access ramp to the Montlake lid. The SR 520 Trail across Lake Washington will be closed.

HOV Direct Access Ramp

On the weekend of Feb. 24-27, crews will install seven girders for the HOV direct access ramp.



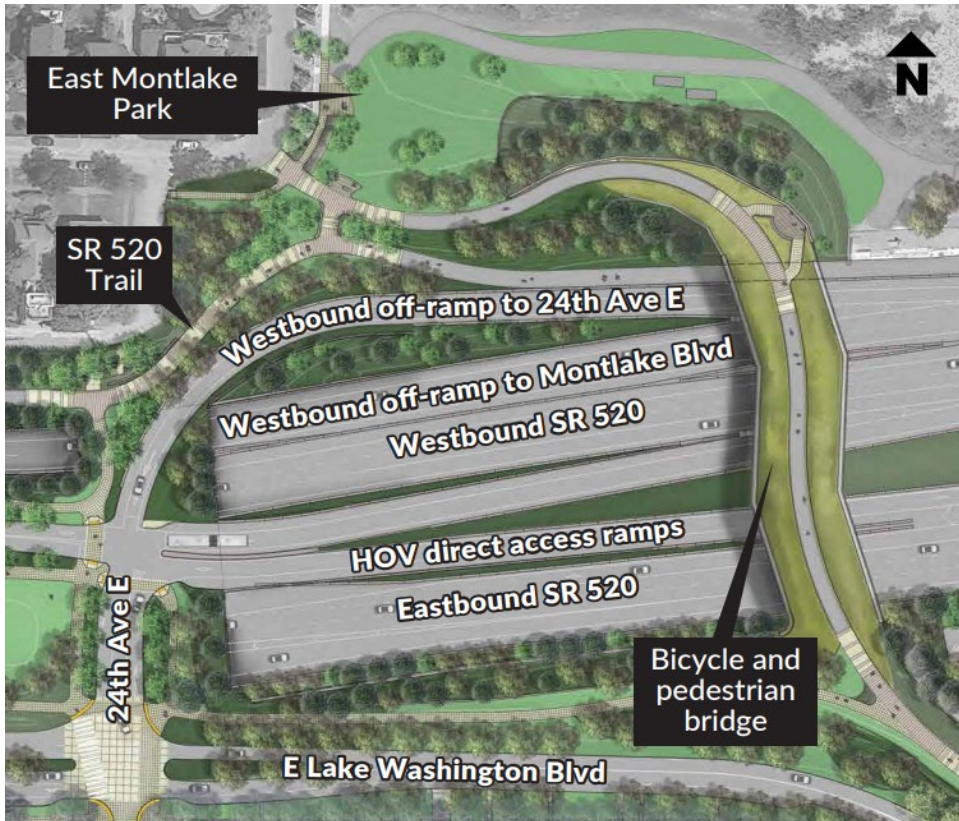
Crew constructing abutment for HOV direct access ramp. (Jan. 25)



HOV direct access ramp work zone is highlighted in yellow.

Bicycle and pedestrian bridge

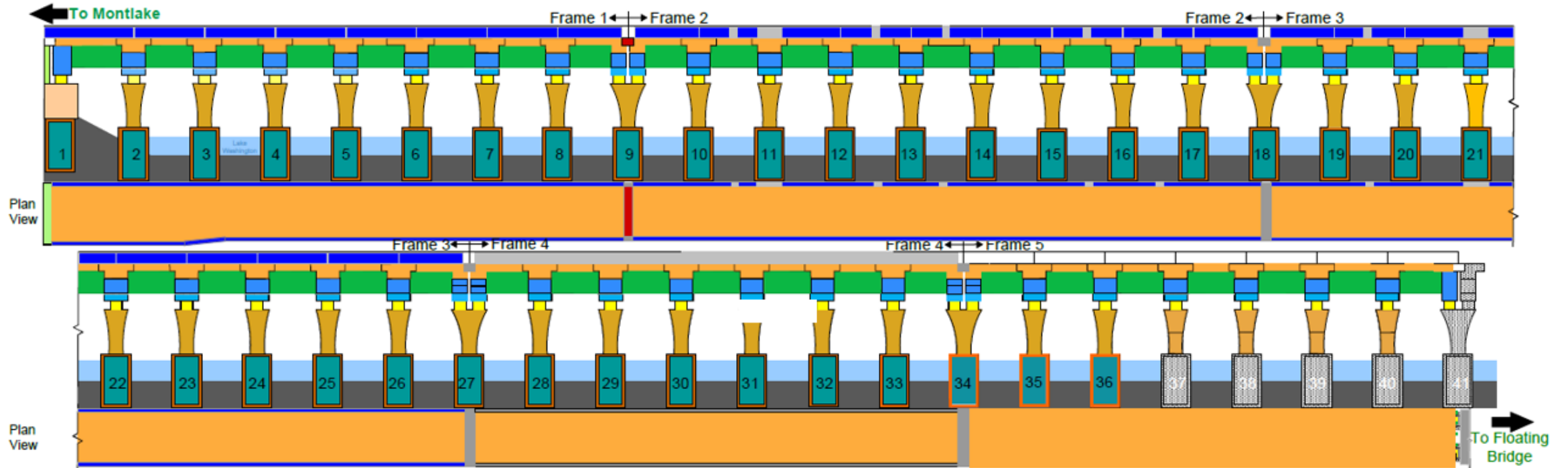
On the weekend of Feb. 24 – 27, crews will install 30 girders for the bicycle and pedestrian bridge across SR 520.



Site of future bicycle and pedestrian bridge before girder installation. (Jan. 10)

Bridge construction progress

- Barrier
- Expansion joints
- Girders
- Bridge deck



What to expect: Noise and vibration

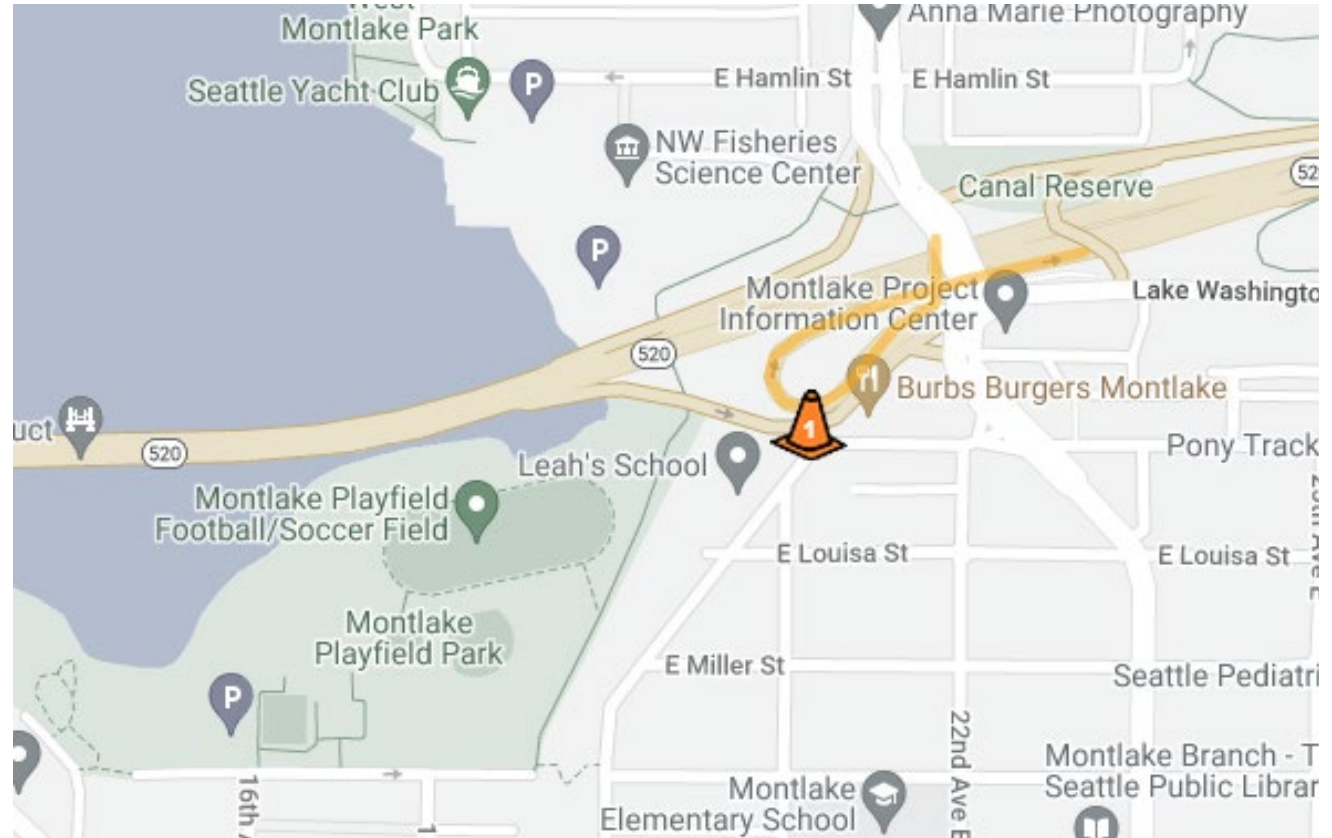
- Different types of equipment result in different levels and kinds of noise and vibration.
- Electronic noise and vibration meters record levels throughout the project area.
- Vibration monitors collect data in the field and immediately alert the project team when readings are outside the set tolerances.
- Nighttime construction has stricter rules for noise levels and equipment use.
- We've received a Major Public Project Construction Noise Variance (MPPCNV) permitting higher than normal decibel levels between the hours of 10 p.m. and 7 a.m.
- Crews may work 24 hours a day, seven days a week throughout construction.
- Typical work hours for the loudest work:
 - 7 a.m. to 10 p.m. weekdays
 - 9 a.m. to 10 p.m. weekends and holidays
 - Impact pile driving has stricter work hours and will occur:
 - 8 a.m. to 5 p.m. weekdays
 - 9 a.m. to 5 p.m. weekends
- Independent noise monitors will be present for night work to ensure compliance with specified noise levels.

Our 24-hour hotline, **206-775-8885**, is the best way to report noise and vibration concerns and to have questions addressed in the moment.

Visit the SR 520 Construction Corner to view the MPPCNV, read up on the allowable nighttime decibel levels, or read our weekly noise report:
www.sr520construction.com/ManagingConstructionEffects

How to stay informed

- Call our 24-hour hotline: [206-775-8885](tel:206-775-8885)
- Email us with questions: sr520bridge@wsdot.wa.gov
- Visit the Montlake Project website: https://bit.ly/520montlake_program
- Visit the SR 520 Construction Corner to learn more about upcoming construction: www.sr520construction.com
- Follow us on Twitter: [@wsdot_520](https://twitter.com/wsdot_520)
- Sign up to receive our email updates at sr520bridge@wsdot.wa.gov
- Watch construction in “real time” on construction cameras: <http://bit.ly/520cams>
- Participate in our online meetings and events



Example of Construction Corner map



Comments and questions?

