



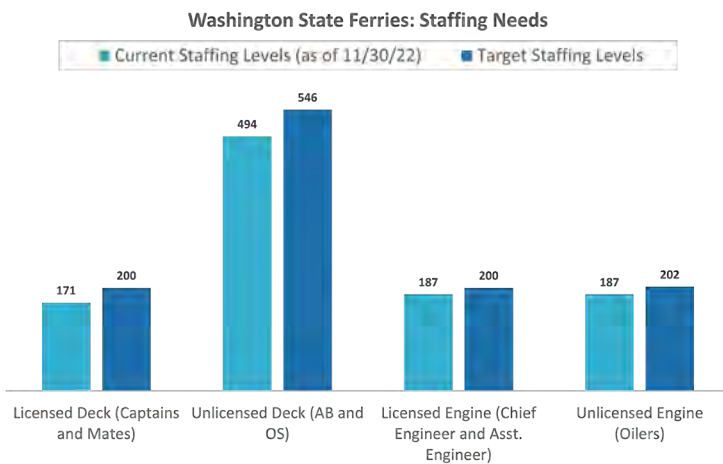
Updated January 3, 2023

Overview

Washington State Ferries is incrementally adding service to meet increasing demand as the ferry system continues to recover from the pandemic. A return to full capacity of the system is dependent on several variables, including:

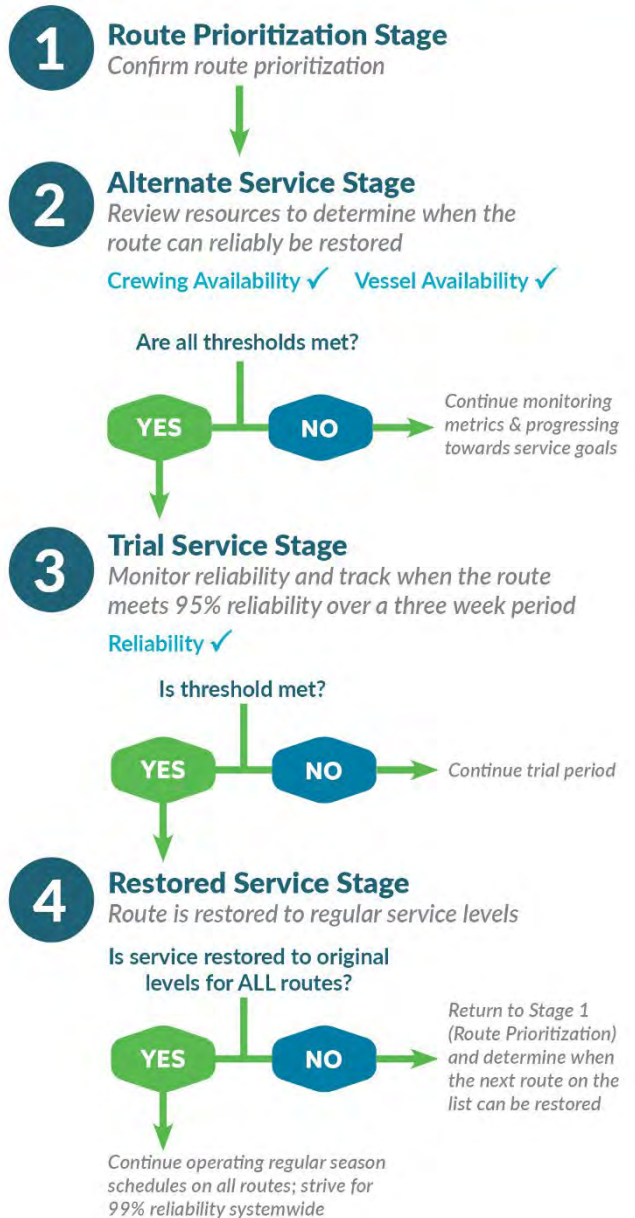
- The trajectory of the pandemic and ongoing impacts of COVID-19 on the workforce.
- Ridership levels and accommodating the seasonal increase in summer peak season ridership.
- The ability of WSF to recruit, hire and train new employees to fill key positions.
- The rate of retirements and other separations that contribute to overall staffing levels.
- Lack of vessels due to unanticipated breakdowns and an aging fleet.

Progress toward reaching targeted staffing levels



*This graph has been adjusted due to a reporting error that incorrectly listed the number of Licensed Deck employees in the Dec. 20, 2022 progress report.

Service Restoration Process



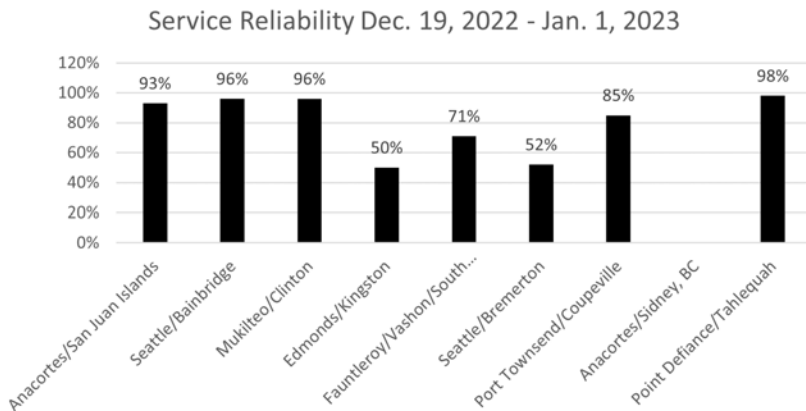
Ferry Service Restoration

WSF has prioritized ferry routes based on ridership, service performance, availability and directness of travel alternatives, and vessel and crew availability.

Service Reliability

During the trial stage, WSF's target is 95% reliability over three weeks before considering a route fully restored. This chart illustrates current reliability for all routes based on a regular schedule.

Note: reliability percentages are lower than usual due to severe winter weather and king tides that required WSF to cancel many trips during the reporting period.



Upcoming Service Changes

- The Edmonds/Kingston route started its Trial Service Stage on Jan 1. WSF is monitoring the route's reliability closely and once it reaches 95% reliability for a three-week period it will be considered fully restored.
- Early in 2023, WSF will begin trialing full, three boat service on the Fauntleroy/Vashon/Southworth route.
- The timing of full restoration of the Seattle/Bremerton and Port Townsend/Coupeville routes is dependent on the number of new mates who complete training in spring 2023. WSF does not anticipate being able to restore service on the Anacortes/Sidney, B.C. route any sooner than Summer 2023.

Route	Restoration Stage
ANACORTES/ SAN JUAN ISLANDS	4 Regular Service
SEATTLE/ BAINBRIDGE	4 Regular Service
MUKILTEO/CLINTON	4 Regular Service
EDMONDS/KINGSTON	3 Trial Service
FAUNTLEROY/ VASHON/ SOUTHWORTH	2 Alternate Service
SEATTLE/ BREMERTON	2 Alternate Service
PORT TOWNSEND/ COUPEVILLE	Late-Fall/Winter Regular Service Late-Spring Alternate Service
ANACORTES/ SIDNEY, B.C.	No Service
POINT DEFIANCE/ TAHLEQUAH	Regular Service

Systemwide Ridership

Total 2022 ridership compared to previous years (data updated as of 12/25/22)

