

Montlake Project

Monthly Construction Update

Aug. 17, 2022

*We will pause for just a moment while
Zoom adds everyone to the meeting.*

Major project elements

The Montlake Project will improve transportation for motorized and nonmotorized travel along the SR 520 corridor, including:

- A new eastbound bridge
- Montlake lid
- Bicycle and pedestrian bridge



Illustration of major project elements.



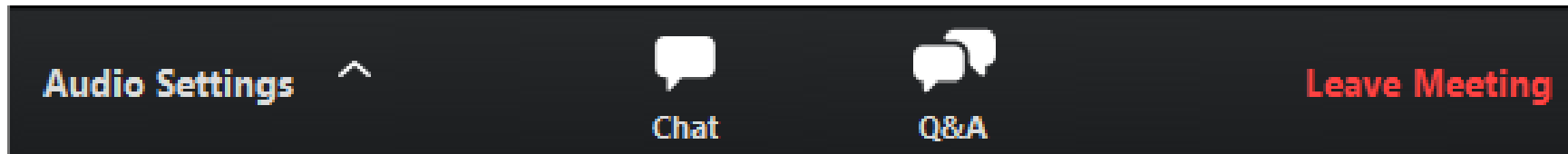
Construction of new eastbound bridge.

How to participate in the webinar

All attendees are muted.
To adjust your audio settings
during the meeting, click on
Audio Settings.



Please use the
Q&A window to ask
questions or offer
comments.



CHAT is disabled during the presentation.
Please communicate with the team through
the **Q&A window**.



Agenda

- Current and upcoming work
- How to stay informed
- Comments and questions



Looking east along the work trestle.

Building the Montlake lid: East end

Later this month, crews will install 24 girders that will create the northeast corner of the lid. These girders will create a tunnel for the future westbound off-ramp to Montlake Boulevard.



Girder installation zones.



Future tunnel for westbound off-ramp shown in yellow.

Building the Montlake lid: East end



SR 520 bridge over Lake Washington will be fully closed in both directions between I-5 and 92nd Avenue NW on the Eastside from 11 p.m. Friday, August 26, to 5 a.m. Monday, August 29. Crews will be installing girders, constructing overhangs for the Montlake lid, and realigning westbound 520.

Montlake lid: West end



We will install girders on the west end of the lid in early 2023.

West end of lid, looking northeast.

Removing the temporary on-ramp



We updated our work to keep the temporary on-ramp open until mid-late September.

We will permanently close the ramp to continue building the eastbound bridge and the bicycle and pedestrian bridge.

Drivers will use the ramp at Montlake Boulevard to eastbound SR 520, where we are adding a new general-purpose lane.

Lake Washington Boulevard berm design

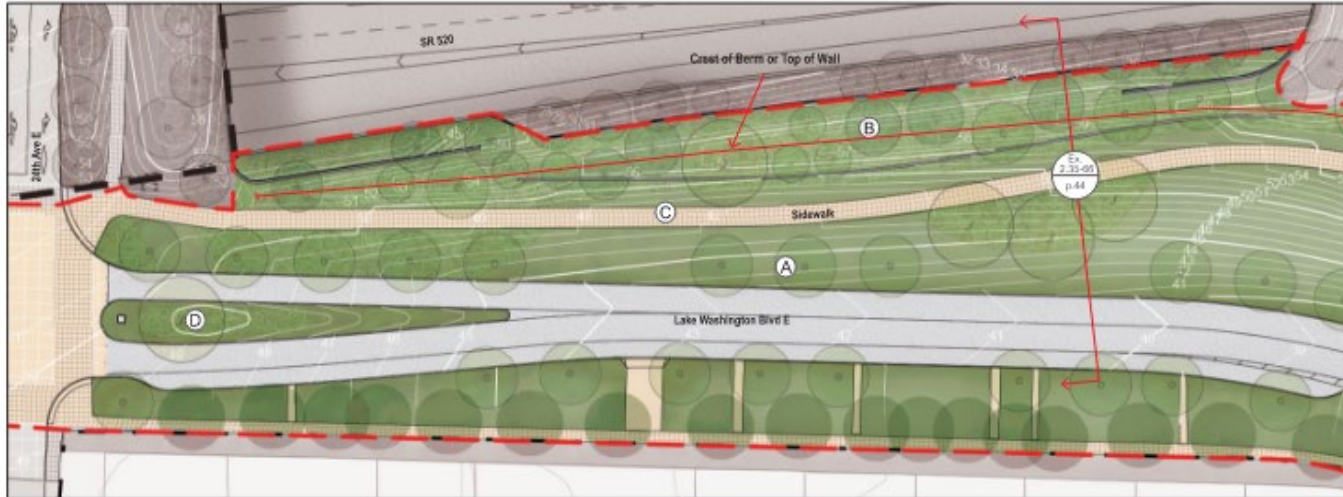


Exhibit 2.35-65: E Lake Washington Blvd east of 24th detail plan

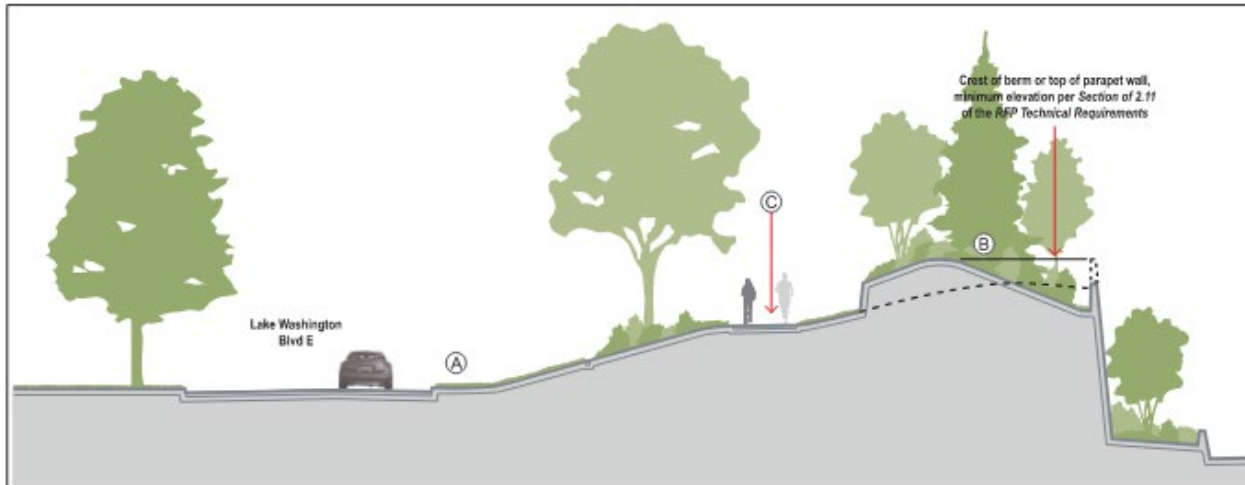


Exhibit 2.35-66: E Lake Washington Blvd east of 24th Ave E section

These renderings are from the urban design manual prepared in February 2018 for use in the SR 520 Montlake program's design build process.

Bicycle and pedestrian tunnel

We're building a tunnel under Montlake Boulevard to connect the SR 520 Trail across Lake Washington to the Bill Dawson Trail.

Construction will resume on the tunnel in September.



Construction area for the future bicycle and pedestrian tunnel, looking west.

Bicycle and pedestrian bridge



The bicycle and pedestrian bridge is starting to take shape in East Montlake Park.



Crews are constructing part of the bridge on the south side of SR 520 along Lake Washington Boulevard.

Bridge construction



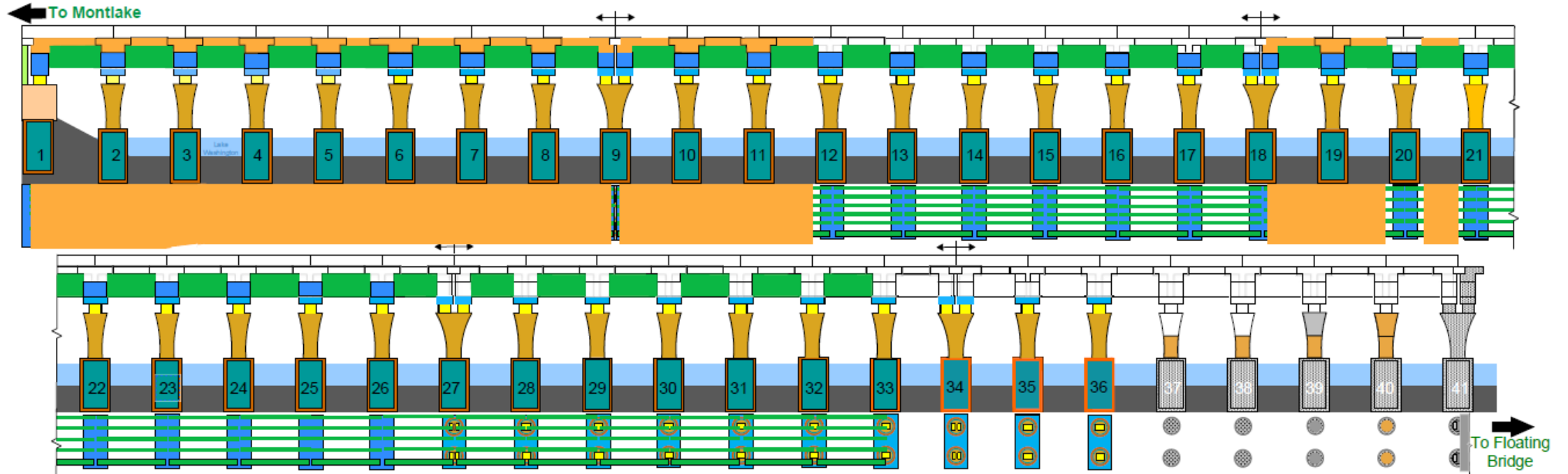
Crews wire together rebar to reinforce the bridge deck prior to pouring concrete.



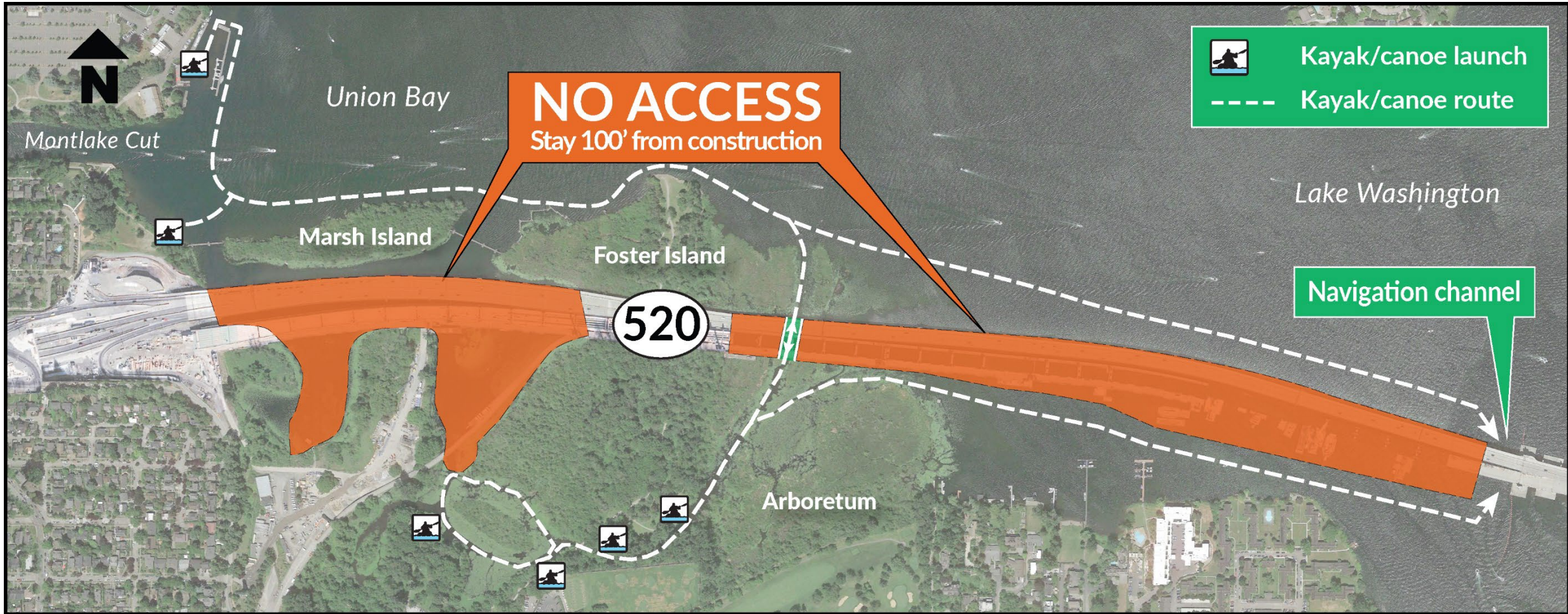
Eastbound bridge construction at the far east end of the project.

Bridge construction progress

- Casings
- Shafts
- Girders
- Bridge deck



Kayak/canoe access during construction



What to expect: Noise and vibration

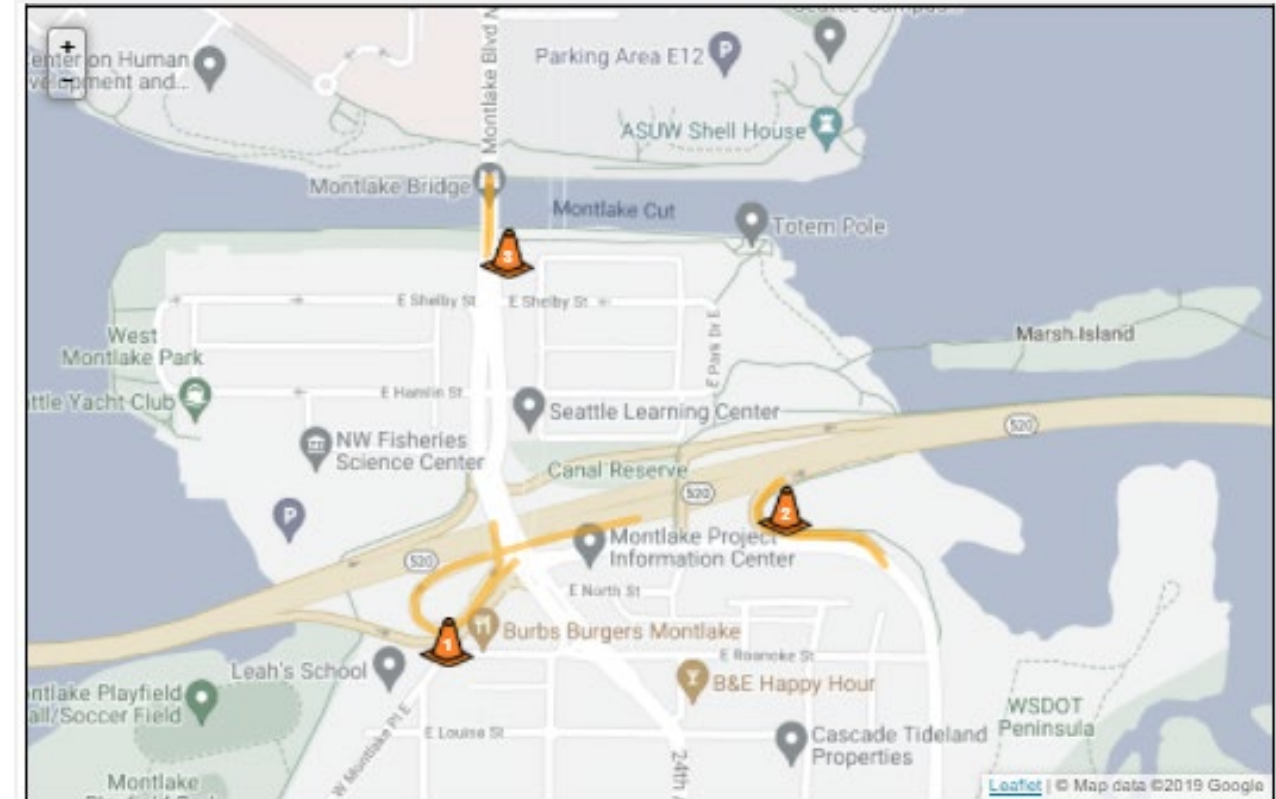
- Different types of equipment result in different levels and kinds of noise and vibration.
- Electronic noise and vibration meters record levels throughout the project area.
- Vibration monitors collect data in the field and immediately alert the project team when readings are outside the set tolerances.
- Nighttime construction has stricter rules for noise levels and equipment use.
- We've received a Major Public Project Construction Noise Variance (MPPCNV) permitting higher than normal decibel levels between the hours of 10 p.m. and 7 a.m.
- Crews may work 24 hours a day, seven days a week throughout construction.
- Typical work hours for the loudest work:
 - 7 a.m. to 10 p.m. weekdays
 - 9 a.m. to 10 p.m. weekends and holidays
 - Impact pile driving has stricter work hours and will occur:
 - 8 a.m. to 5 p.m. weekdays
 - 9 a.m. to 5 p.m. weekends
- Independent noise monitors will be present for night work to ensure compliance with specified noise levels.

Our 24-hour hotline, **206-775-8885**, is the best way to report noise and vibration concerns and to have questions addressed in the moment.

Visit the SR 520 Construction Corner to view the MPPCNV, read up on the allowable nighttime decibel levels, or read our weekly noise report:
www.sr520construction.com/ManagingConstructionEffects

How to stay informed

- Call our 24-hour hotline: [206-775-8885](tel:206-775-8885)
- Email us with questions: sr520bridge@wsdot.wa.gov
- Visit the Montlake Project website: https://bit.ly/520montlake_program
- Visit the SR 520 Construction Corner to learn more about upcoming construction: www.sr520construction.com
- Follow us on Twitter: [@wsdot_520](https://twitter.com/wsdot_520)
- Sign up for our email updates by emailing us at sr520bridge@wsdot.wa.gov
- Watch construction in “real time” on our four construction cameras: <http://bit.ly/520cams>
- Participate in our online meetings and events



Construction Corner map.



Comments and questions?



End of program