

SR 520/I-5 Express Lanes Connection Project

Construction update public meeting

Zoom Webinar - August 24, 2022

Shane Oden, PE

SR 520 Project Engineer

Washington State Department of Transportation

Jim Farris, PE

SR 520 Project Engineer

Washington State Department of Transportation

Michael Thibeau

Project Manager

The Walsh Group

How to participate in the webinar



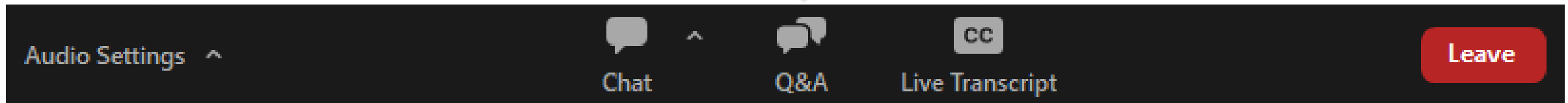
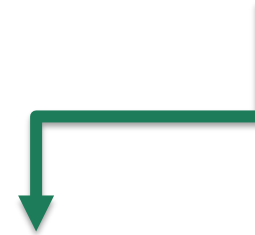
All attendees are muted.
To adjust your audio settings during the meeting, click on **Audio Settings**.



Chat is disabled.
Please use the **Q&A** to ask questions or offer comments.



Auto-captioning is enabled. Click the CC box to change settings.



Technical difficulties? Email: SR520bridge@wsdot.wa.gov

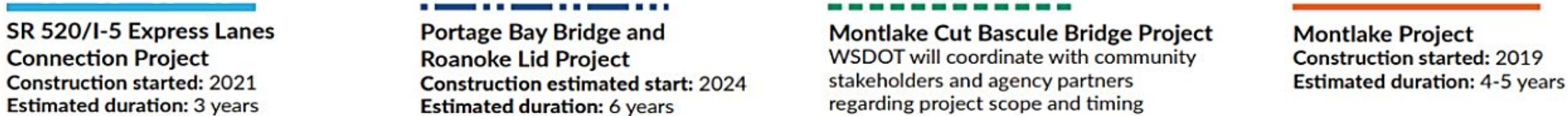
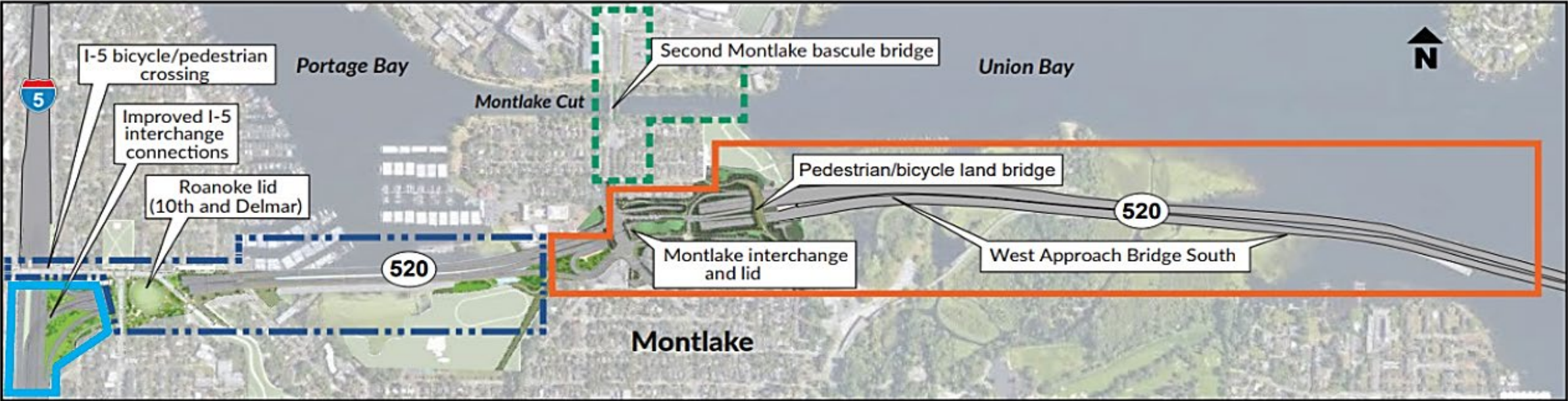
Agenda

- Project overview
- Recent construction
 - Vibration and noise
- Upcoming construction
- Updates from Portage Bay Bridge project team
- Q&A
- How to stay informed
- Adjourn

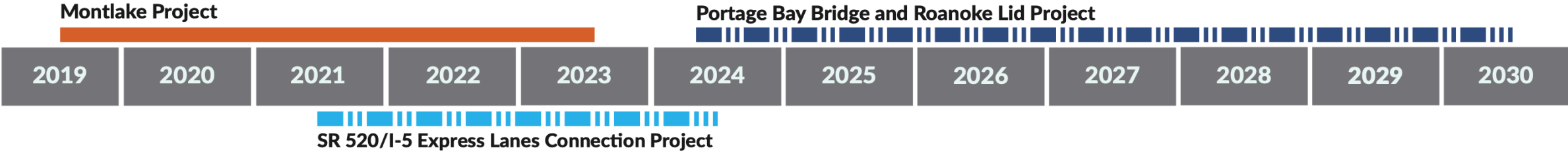


Looking northeast at the SR 520/I-5 interchange.

SR 520 progress keeps moving west



SR 520 construction timeline



I-5 Project Overview

Project elements include:

1. New, reversible transit/HOV ramp between SR 520 and the I-5 express lanes
2. Restriped I-5 express lanes: retains four existing lanes while adding a reversible transit/HOV lane between I-5/SR 520 interchange and Mercer Street
3. Modified, reversible ramp between the I-5 express lanes and Mercer Street



Project Rendering



Looking south at I-5 and SR 520 interchange

Recent Construction Progress

- Work on retaining walls at Mercer interchange, Roanoke off-ramp and flyover ramp foundation/support structure

Current lane closures/reductions:

- I-5 express lanes reduced from four to three lanes through February 2023
- WB SR 520 to SB I-5 ramp reduced from two to one lane through Spring 2023
- WB SR 520 Roanoke St off-ramp closed for 55 days, scheduled to reopen Sept. 1



Looking north, crews are making room for a new ramp that will connect SR 520 to the I-5 express lanes



00:00.00



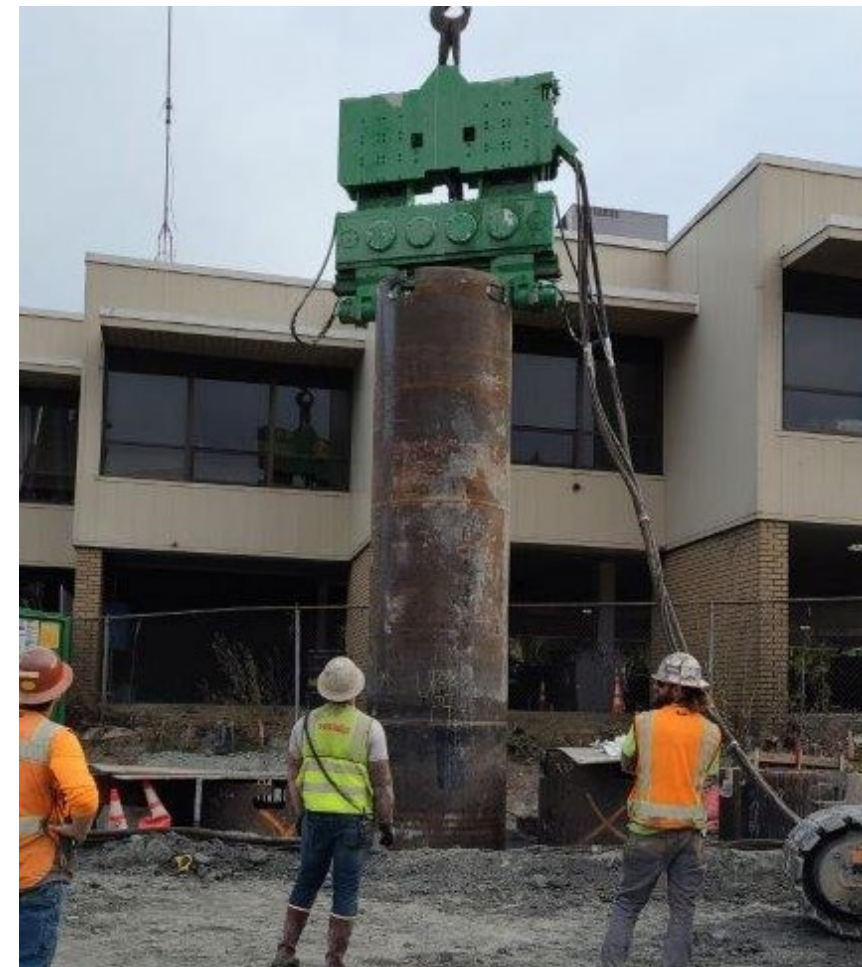
E Roanoke Street Off-Ramp Work: Vibration and Noise Effects

- Recent vibratory work
 - Drilling work near ramp to construct retaining wall
 - 5' diameter temporary steel casing became stuck; vibratory equipment needed to dislodge for removal
 - Received calls/emails from neighbors regarding vibration
 - Worked with contractor to primarily use alternate method, oscillation
 - Vibratory equipment used only when necessary

Possible upcoming nighttime noise and vibration:

- Completion of retaining walls near Roanoke
- Compaction for roadway construction

**24-hr construction project hotline:
206-316-2559**



Crews are using vibratory equipment needed during drilling operations for the retaining wall near the SR 520 westbound off-ramp to East Roanoke Street

Upcoming work

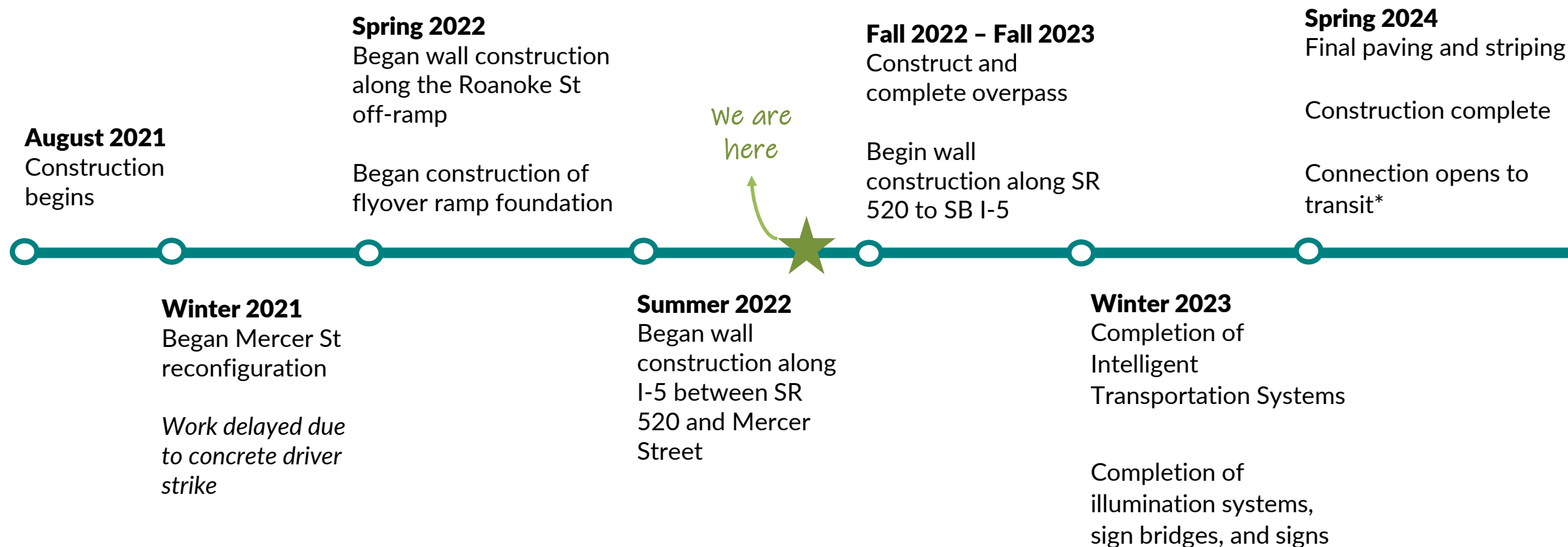
In preparation for the elevated ramp connecting Express Lanes and I-5:

- **Express lanes reduced from four to three until Feb. 2023**
 - Necessary to create a work zone to construct new retaining walls, ramp support pier and utilities
- **Full weekend closure Sept. 23-26 (tent.)**
 - Necessary to allow access for drilling, removal of materials, and placing concrete to construct ramp support pier



Crews work near pier 3 during a previous full express lanes weekend closure

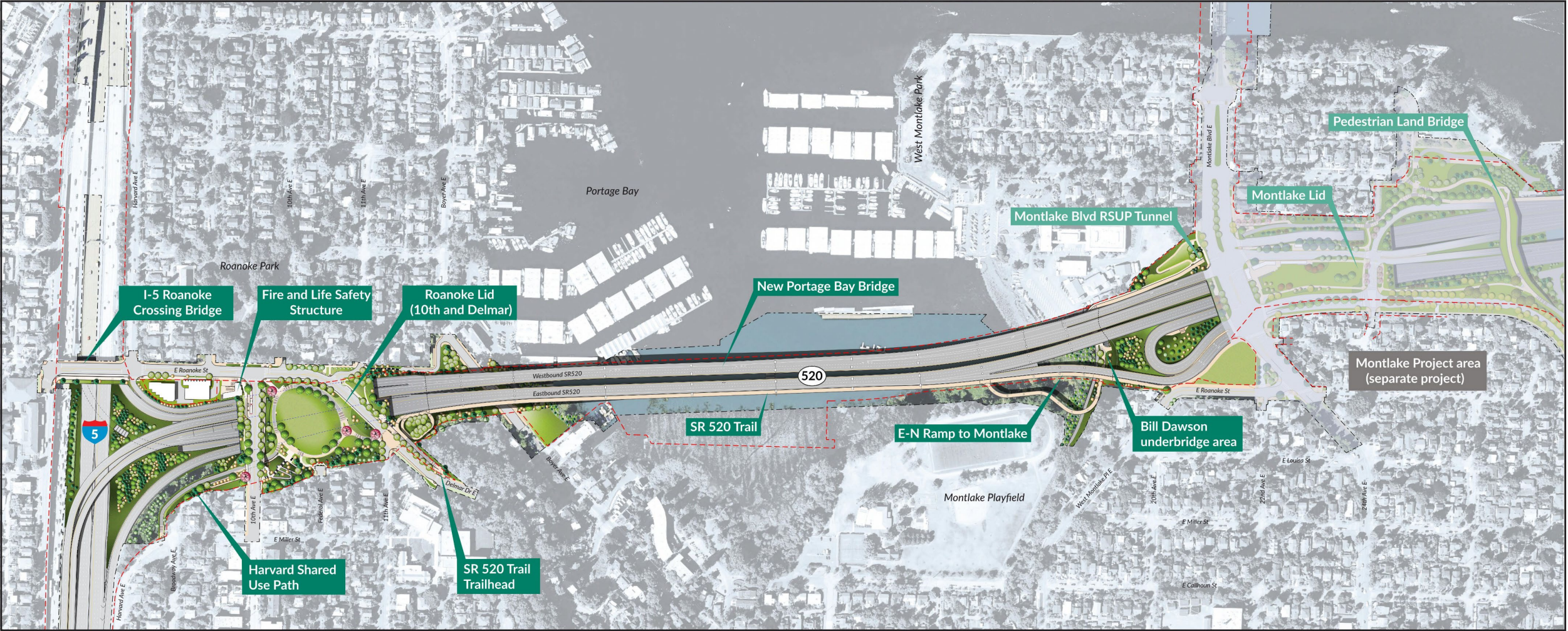
Major Project Milestones and Anticipated Timeline



*Reversible transit/HOV lane will open to carpools following completion of Portage Bay Bridge and Roanoke Lid Project

Portage Bay Bridge and Roanoke Lid Project: Overview

Construction set to begin in 2024 and last approximately six years.



Note: concepts and materials shown are draft ideas for discussion purposes only, and are subject to change.

Test Pile Installation



Pre-construction Inspections & Noise Mitigation

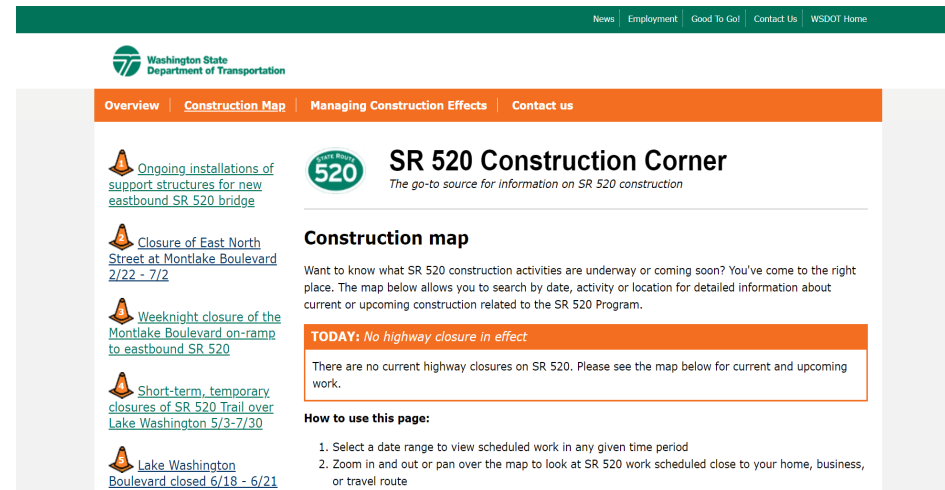
Jim Farris

Coming soon...
(Fall 2022)



Stay in touch

- **Contact** David Goldberg, SR 520 Program Community Liaison & Ombudsman. Email GoldbeD@wsdot.wa.gov or call 206-770-3659
- **Email** SR 520 staff with your questions about the project or construction activities. SR520Bridge@wsdot.wa.gov
- **Call** the 24-Hour Construction Hotline: **(206) 316-2559**
- **Visit** the [SR 520 Construction Corner](#) for the most up-to-date information on closures and construction impacts.
- **Visit** the [SR 520 Program website](#) to find general information about the project.
- **Follow** us on Twitter [@wsdot_520](https://twitter.com/wsdot_520) to get key news and updates about the SR 520 program.



Questions or comments?

Please use the **Q&A window** to ask questions or offer comments to be addressed by our team.



Looking south at I-5 and the I-5 express lanes toward downtown Seattle, Lake Union on the right

We want to hear from you!

Thank you for participating in today's public meeting.

Have last comments and thoughts for our team? Send us an email at SR520bridge@wsdot.wa.gov

