

Montlake Project

Monthly Construction Update

June 15, 2022

*We will pause for just a moment while
Zoom adds everyone to the meeting.*

Major project elements

The Montlake Project will improve transportation for motorized and nonmotorized travel along the SR 520 corridor, including:

- A new eastbound bridge
- Montlake lid
- Bicycle and pedestrian bridge



Illustration of major project elements



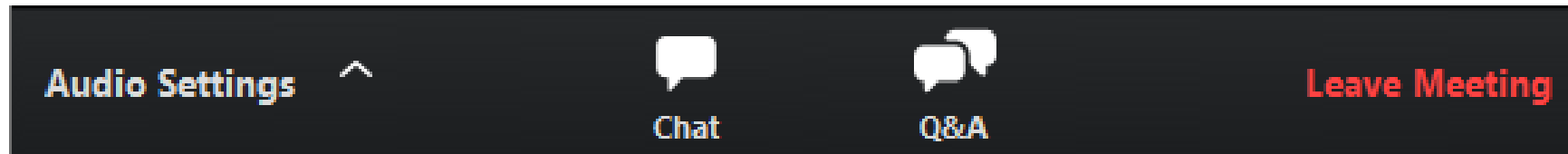
Construction of new eastbound bridge

How to participate in the webinar

All attendees are muted.
To adjust your audio settings during the meeting, click on **Audio Settings**.



Please use the **Q&A window** to ask questions or offer comments.



CHAT is disabled during the presentation.
Please communicate with the team through the **Q&A window**.



Agenda

- Current and upcoming work
- How to stay informed
- Comments and questions



Extending the Montlake lid to the east

Building the Montlake lid



Crews continue extending the lid to the east and west.

The Montlake Boulevard and 24th Avenue East overpasses will shift into their final configuration in 2023.

Looking over the Montlake lid

Montlake lid: east end



East end of lid looking west

Montlake lid: east end



Pier 1 east



Pier 3 east with pier 4 foundation being poured in foreground

Montlake lid: west end



West end of lid looking northeast

Montlake lid: west end



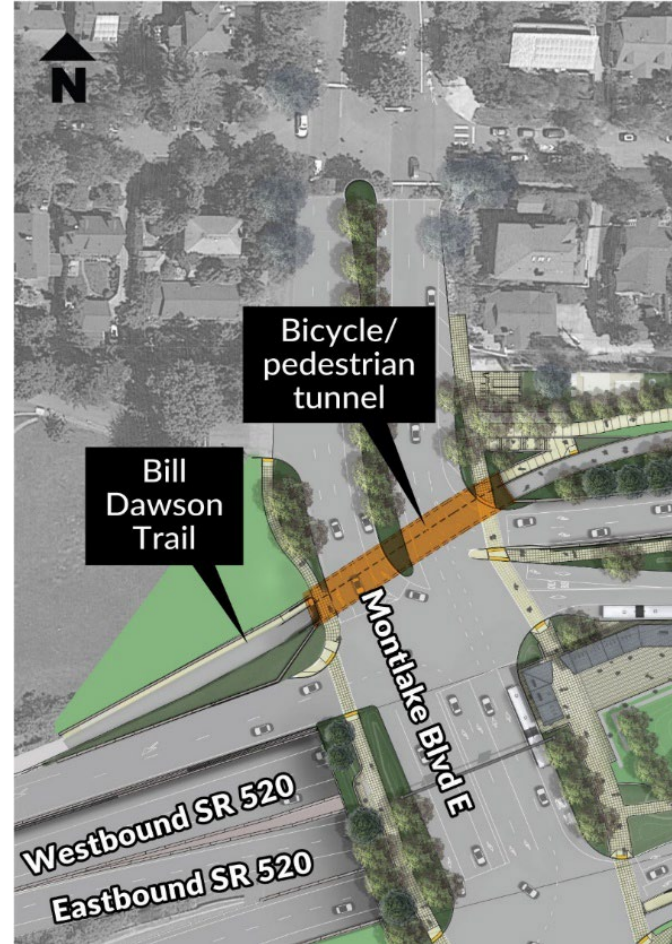
Pier 1 west



Pier 3 west

Bicycle and pedestrian tunnel

We're building a tunnel under Montlake Boulevard to connect the SR 520 Trail across Lake Washington to the Bill Dawson Trail. Construction will begin on west side in September.



Construction area for the future bicycle and pedestrian tunnel, looking west

Bicycle and pedestrian bridge



The bicycle and pedestrian bridge is starting to take shape in East Montlake Park.



Crews are constructing an embankment for the bridge in East Montlake Park.

Bicycle and pedestrian counter



We installed a bicycle and pedestrian counter on the SR 520 Trail.

About 325,000 people use the trail each year!

Removing the temporary on-ramp and path



The temporary path under SR 520 was permanently closed on June 6.

The temporary on-ramp from Lake Washington Boulevard to eastbound SR 520 will be removed beginning of August

Temporary ramp, looking east.

Lake Washington Boulevard closure



Lake Washington Boulevard will be closed between 24th Avenue East and East Foster Island Road from 10 p.m. Friday, June 17 until 11:59 p.m. Sunday, July 3.

Lake Washington Boulevard berm design

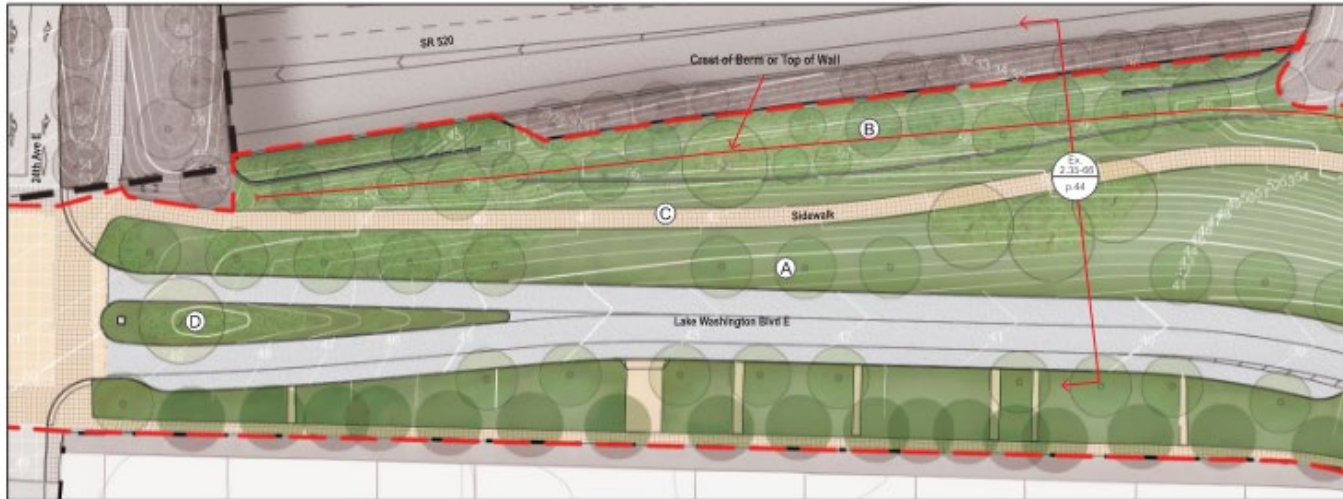


Exhibit 2.35-65: E Lake Washington Blvd east of 24th detail plan

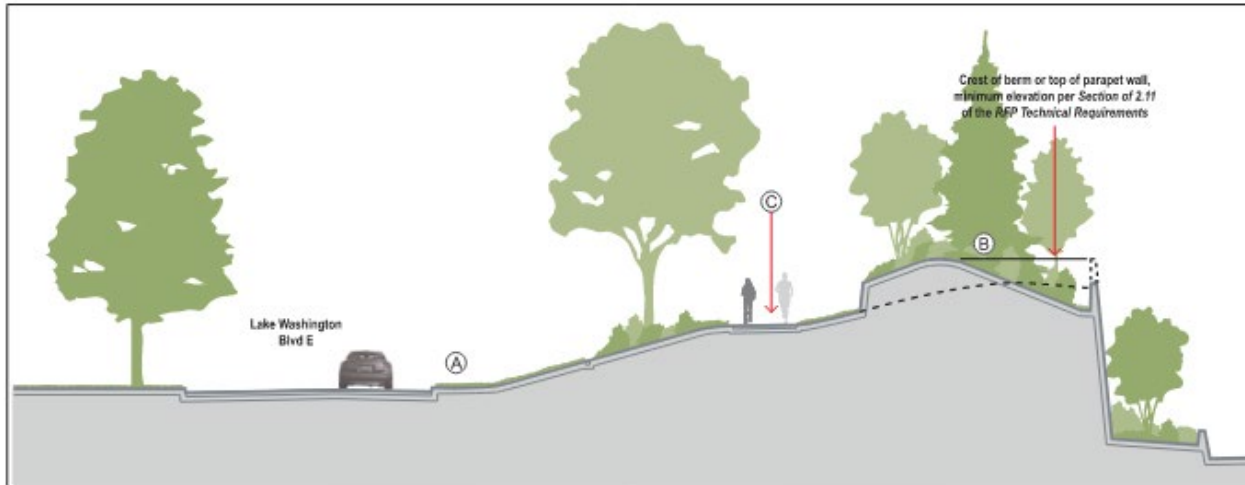


Exhibit 2.35-66: E Lake Washington Blvd east of 24th Ave E section

These renderings are from the urban design manual prepared in February 2018 for use in the SR 520 Montlake program's design build process.

Old on-ramp removal



Looking east toward Lake Washington at the old on-ramp



Crew on crane barge completing removal of the old on-ramp

Eastbound bridge construction

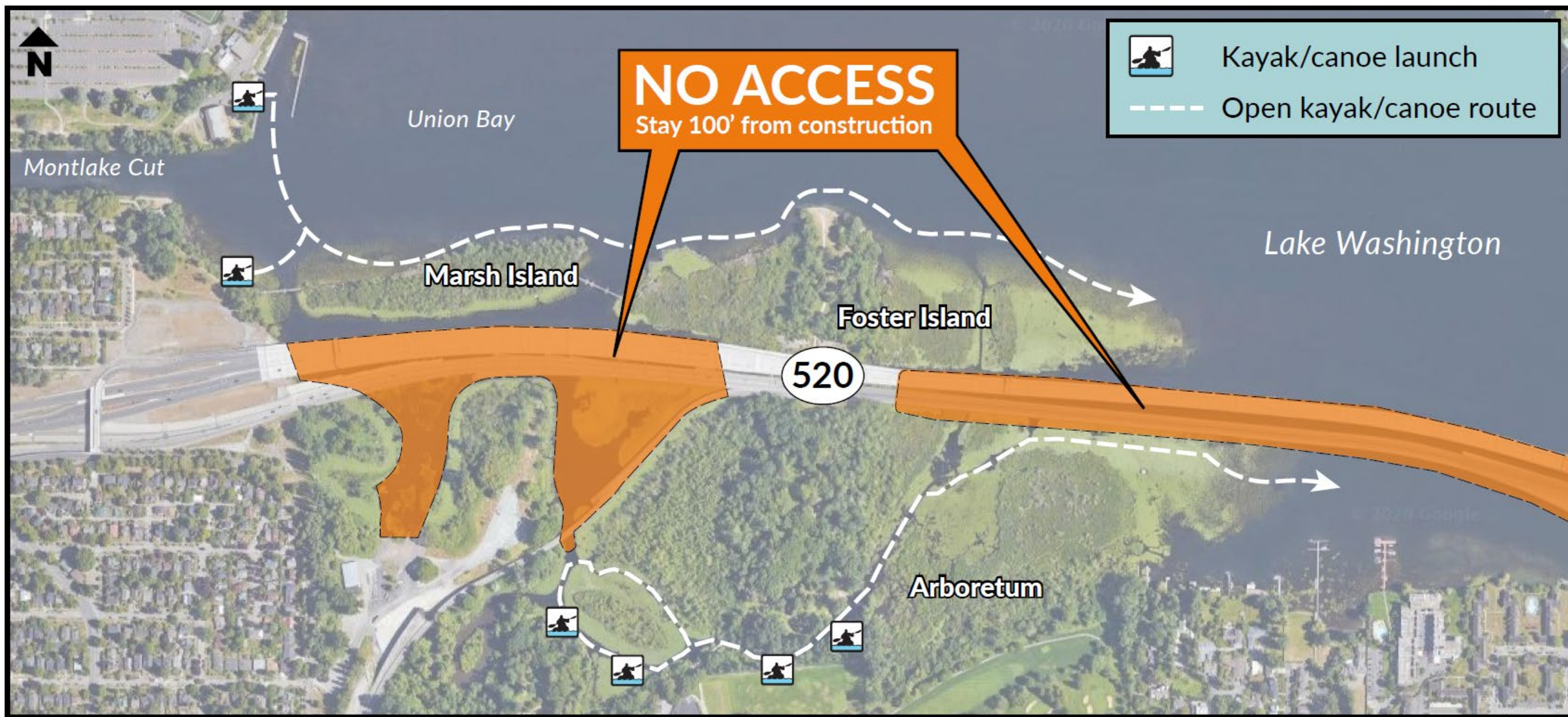


Crews have begun pouring the surface of the new bridge.

- Casings
- Shafts
- Girders



Kayak/canoe access during construction



What to expect: Noise and vibration

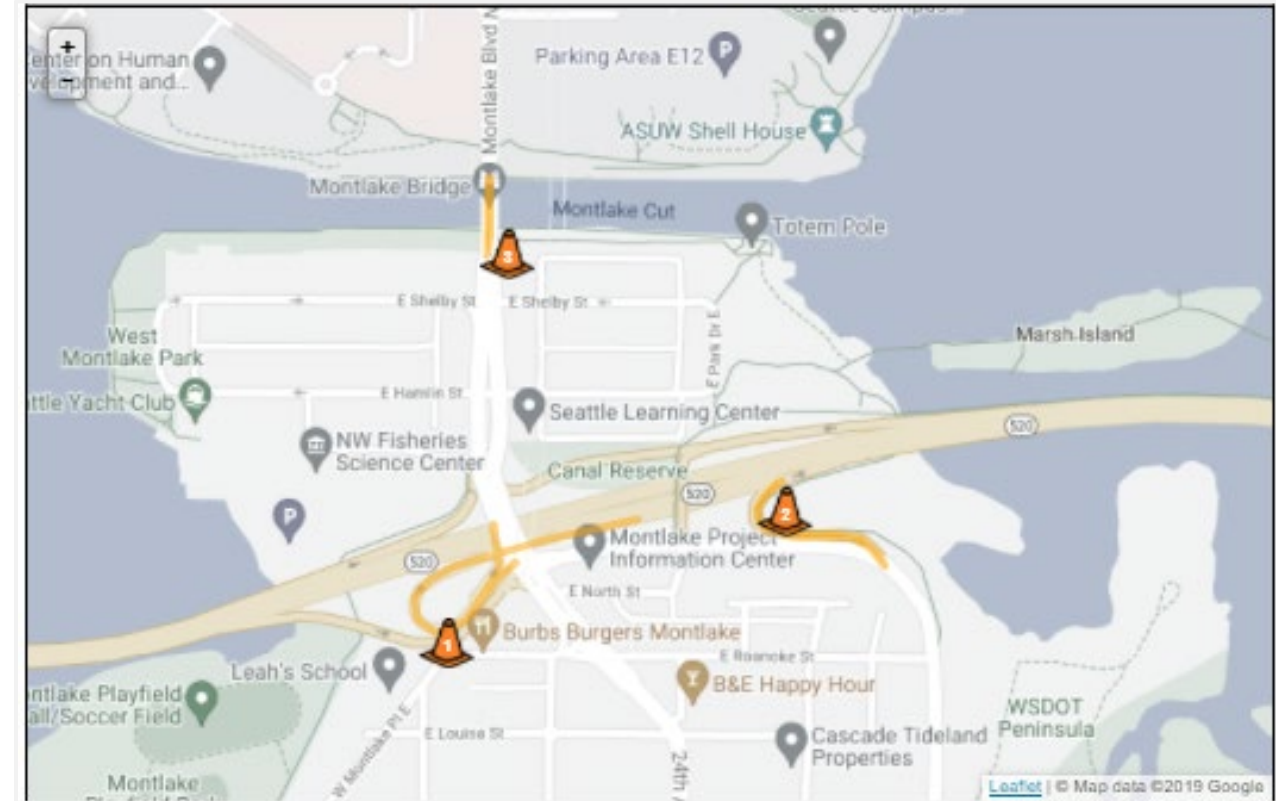
- Different types of equipment result in different levels and kinds of noise and vibration.
- Electronic noise and vibration meters record levels throughout the project area.
- Vibration monitors collect data in the field and immediately alert the project team when readings are outside the set tolerances.
- Nighttime construction has stricter rules for noise levels and equipment use.
- We've received a Major Public Project Construction Noise Variance (MPPCNV) permitting higher than normal decibel levels between the hours of 10 p.m. and 7 a.m.
- Crews may work 24 hours a day, seven days a week throughout construction.
- Typical work hours for the loudest work:
 - 7 a.m. to 10 p.m. weekdays
 - 9 a.m. to 10 p.m. weekends and holidays
 - Impact pile driving has stricter work hours and will occur:
 - 8 a.m. to 5 p.m. weekdays
 - 9 a.m. to 5 p.m. weekends
- Independent noise monitors will be present for night work to ensure compliance with specified noise levels.

Our 24-hour hotline, **206-775-8885**, is the best way to report noise and vibration concerns and to have questions addressed in the moment.

Visit the SR 520 Construction Corner to view the MPPCNV, read up on the allowable nighttime decibel levels, or read our weekly noise report:
www.sr520construction.com/ManagingConstructionEffects

How to stay informed

- Call our 24-hour hotline: [206-775-8885](tel:206-775-8885)
- Email us with questions: sr520bridge@wsdot.wa.gov
- Visit the Montlake Project website: https://bit.ly/520montlake_program
- Visit the SR 520 Construction Corner to learn more about upcoming construction: www.sr520construction.com
- Follow us on Twitter: [@wsdot_520](https://twitter.com/wsdot_520)
- Sign up for our email updates by emailing us at sr520bridge@wsdot.wa.gov
- Watch construction in “real time” on our four construction cameras: <http://bit.ly/520cams>
- Participate in our online meetings and events



Construction Corner map.



Comments and questions?



End of program