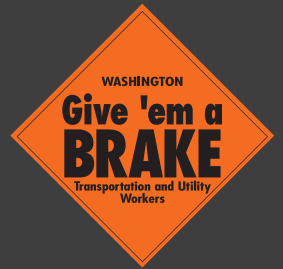
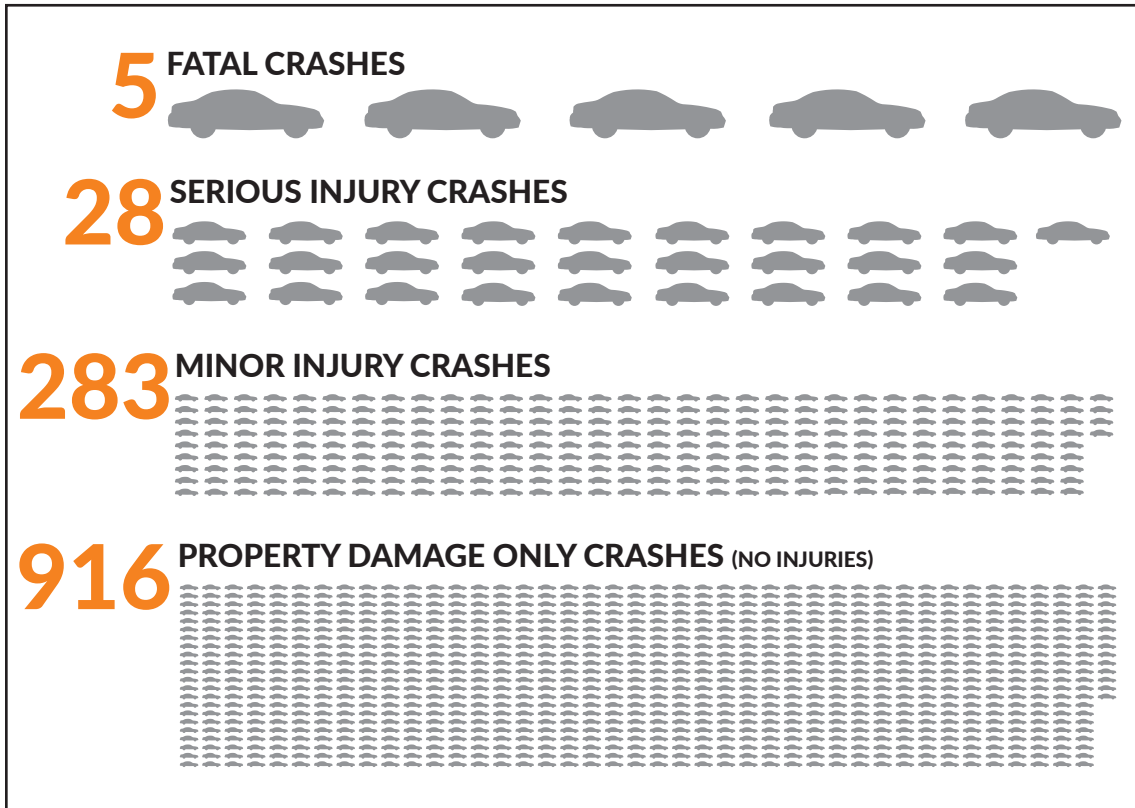


WASHINGTON STATE WORK ZONE

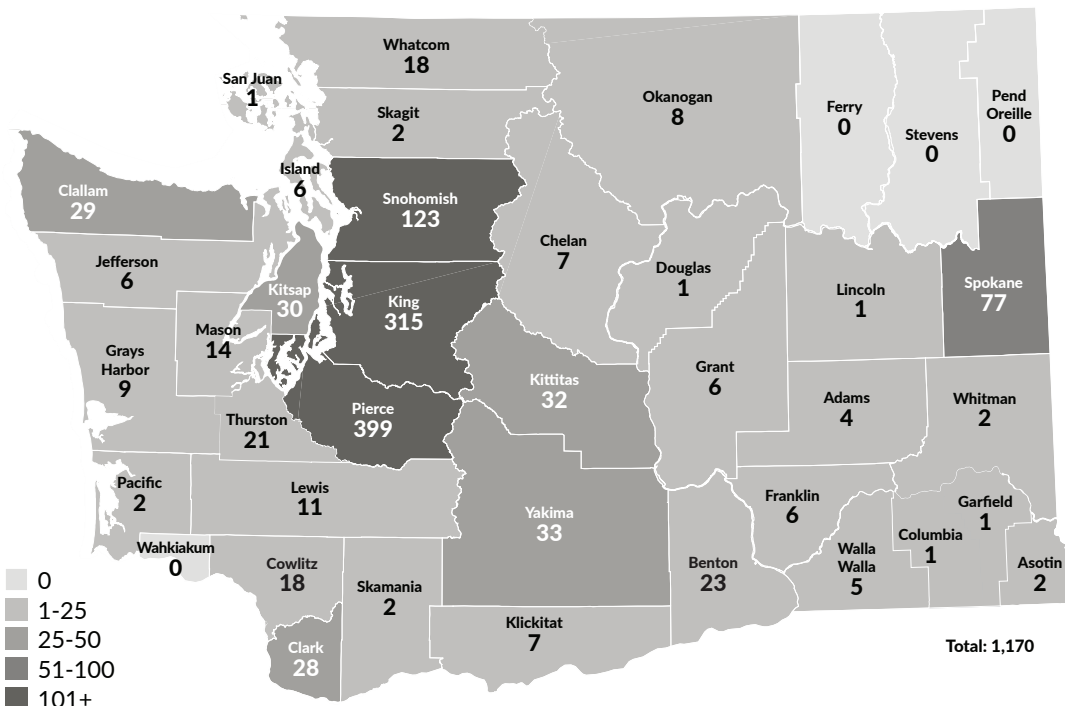
Collision Facts



Severity of Work Zone Collisions in 2021

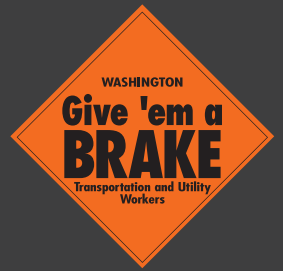


Reported collisions within a work zone or caused by backup from a work zone in 2021 by county

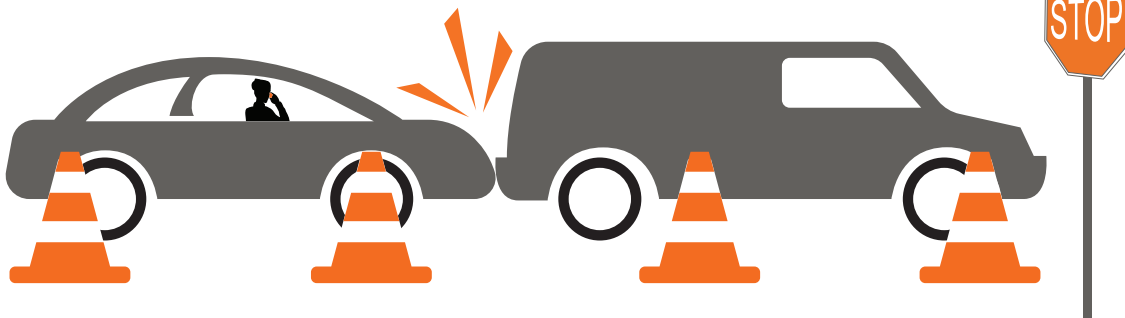
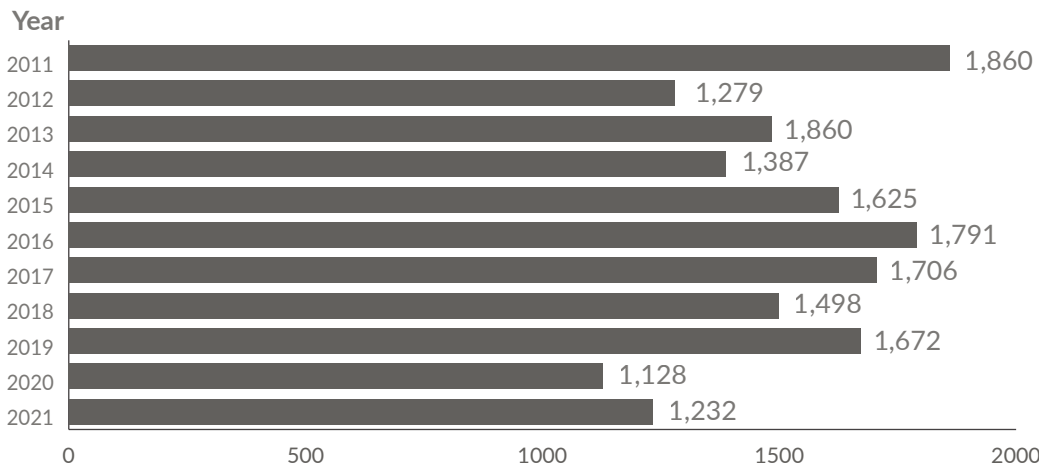


WASHINGTON STATE WORK ZONE

Collision Facts



Number of officer-reported collisions within a work zone or in an external backup from a work zone between 2011 and 2021



- Distracted/inattentive driving remains one of the top causes of crashes in Washington work zones.
- Following too closely also is a top contributing factor in work zone crashes in 2021.
- Speeding is a continuing issue. **Slow down. Lives are on the line.**



* Other types of distracted driving:
\$99 ticket

