



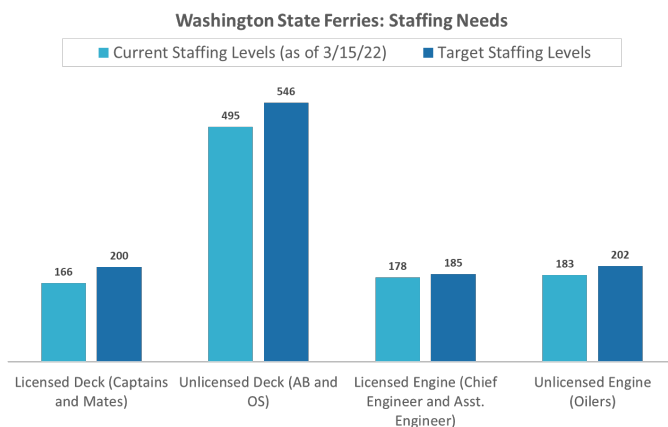
Updated March 15, 2022

## Overview

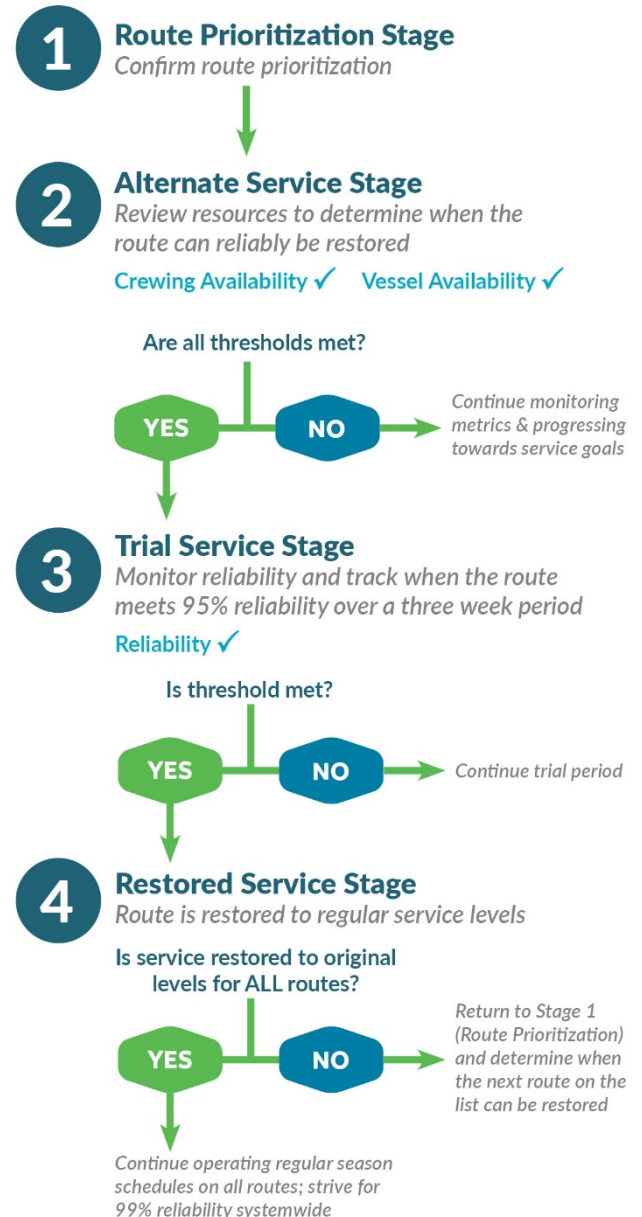
Washington State Ferries is incrementally increasing service to meet increasing demand as the ferry system continues to recover from the pandemic. A return to full capacity of the system is dependent on several variables, including:

- The trajectory of the pandemic and ongoing impacts of COVID-19 on the workforce.
- Ridership levels and accommodating the seasonal increase in summer peak season ridership.
- The ability of WSF to recruit, hire and train new employees to fill key positions.
- The rate of retirements and other separations that contribute to overall staffing levels.
- Lack of vessels due to unanticipated breakdowns and an aging fleet.

## Progress toward reaching targeted staffing levels



## Service Restoration Process



## Ferry Service Restoration

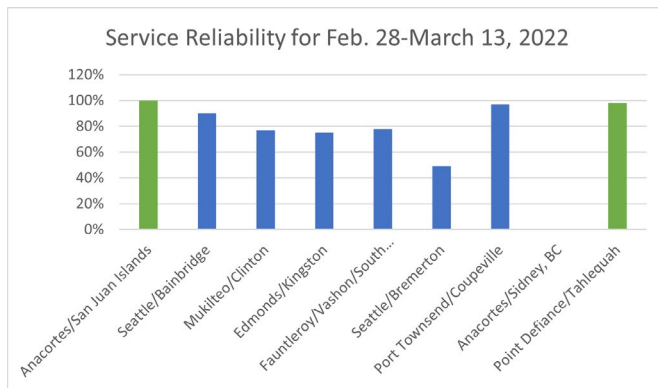
WSF has prioritized ferry routes based on ridership, service performance, availability and directness of travel alternatives, and vessel and crew availability.

### Upcoming service changes

- Starting March 22, the Seattle/Bainbridge route will move to the Trial Service stage. WSF will monitor the route's reliability closely and once it reaches 95% reliability for a three-week monitoring period, WSF will announce it fully restored.
- Spring season begins April 10

### Service Reliability

During the trial stage, WSF's target is 95% reliability over three weeks before considering the route fully restored. This chart illustrates current reliability for all routes based on a regular schedule.



Route	Restoration Stage
ANACORTES/ SAN JUAN ISLANDS	4 Regular Service
SEATTLE/ BAINBRIDGE	3 Trial Stage
MUKILTEO/CLINTON	2 Alternate Service
EDMONDS/KINGSTON	2 Alternate Service
FAUNTLEROY/ VASHON/ SOUTHWORTH	2 Alternate Service
SEATTLE/ BREMERTON	2 Alternate Service
PORT TOWNSEND/ COUPEVILLE	Winter Regular Service Spring Alternate Service
ANACORTES/ SIDNEY, B.C.	No Service
POINT DEFIANCE/ TAHLEQUAH	Regular Service

## Systemwide Ridership

Total 2022 ridership compared to previous years (data updated as of 2/27/22)

Total Ridership by Year | Route: All

