

# Montlake Project

## Monthly Construction Update

Dec. 8, 2021

*We will pause for just a moment while  
Zoom adds everyone to the meeting.*

# Major project elements

The Montlake Project will improve transportation for motorized and nonmotorized travel along the SR 520 corridor, including:

- A new eastbound bridge
- Montlake lid
- Bicycle and pedestrian bridge



Illustration of major project elements.



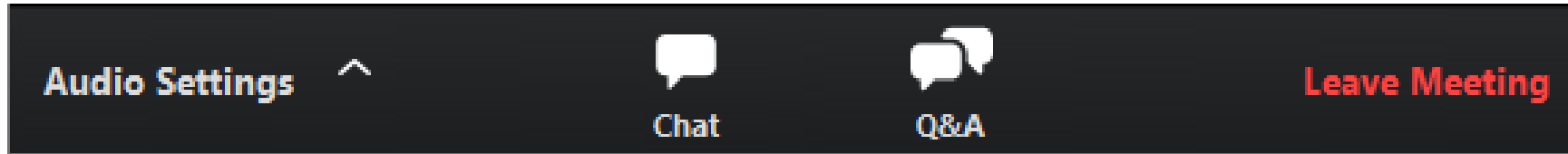
Construction of new eastbound bridge.

# How to participate in the webinar

**All attendees are muted.**  
To adjust your audio settings  
during the meeting, click on  
**Audio Settings.**



Please use the  
**Q&A window** to ask  
questions or offer  
comments.



**CHAT** is disabled during the presentation.  
Please communicate with the team through  
the **Q&A window**.





# Agenda

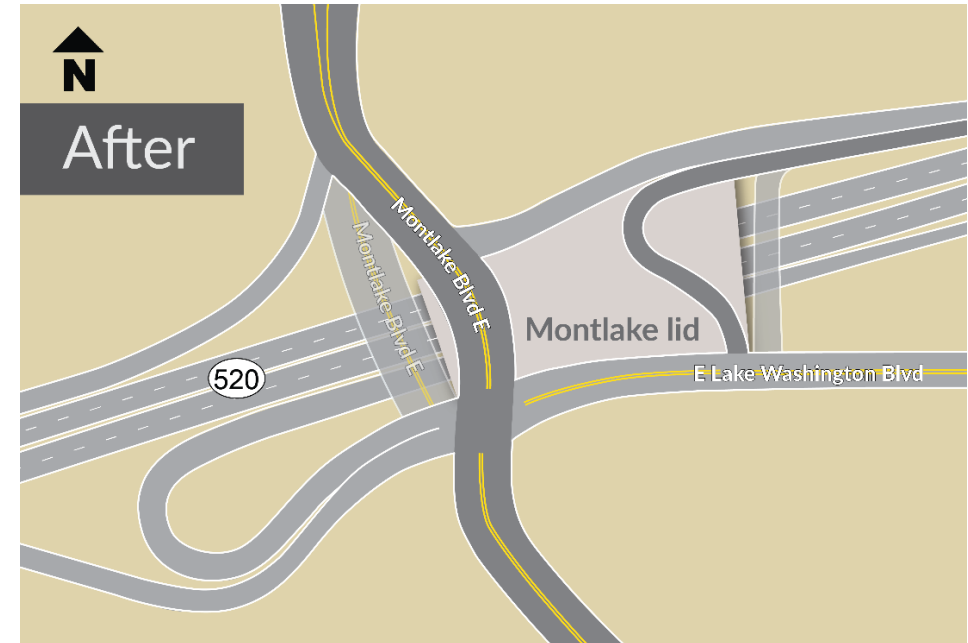
- Current and upcoming work
- How to stay informed
- Comments and questions



Demolition work on the eastbound SR 520 bridge.

# Completed traffic shifts and overpass demolition

- ✓ Aug. 27 – 30: Shift Montlake Boulevard overpass
- ✓ Oct. 22 – 25: Demolish Montlake Boulevard overpass
- ✓ Oct. 29 – Nov. 1: Shift Lake Washington Boulevard off-ramp
- ✓ Nov 19 – 22: Demolish Lake Washington Boulevard off-ramp





# Demolishing the Montlake Boulevard overpass

The Montlake overpass was demolished during the Oct. 22 – 25 weekend.



Sept. 13: Montlake overpass looking west.



Oct. 27: Montlake overpass looking west.



# Demolishing the Lake Washington Boulevard off-ramp

The Lake Washington Boulevard off-ramp was demolished during the Nov. 19-22 weekend.



Oct. 27: Lake Washington Boulevard looking west.



Nov. 24: Lake Washington Boulevard looking west.

# Demolishing the Lake Washington Boulevard off-ramp

## SR 520 Montlake Project

Removing the Lake Washington Boulevard off-ramp - November 2021

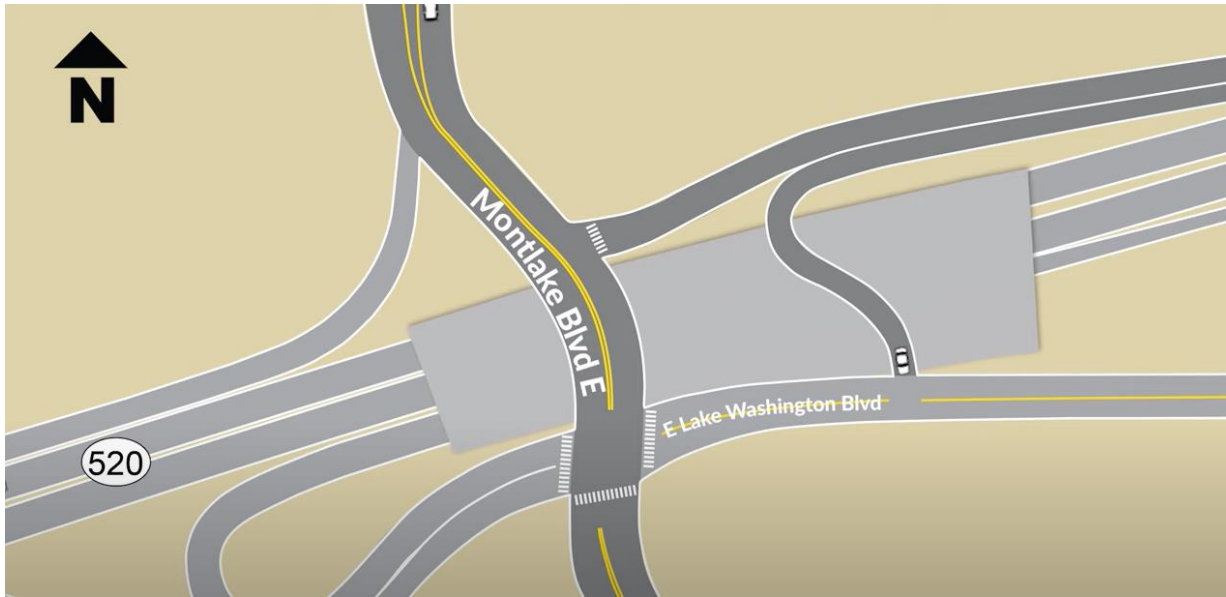


The Lake Washington Boulevard off-ramp was demolished during the Nov. 19-22 weekend.

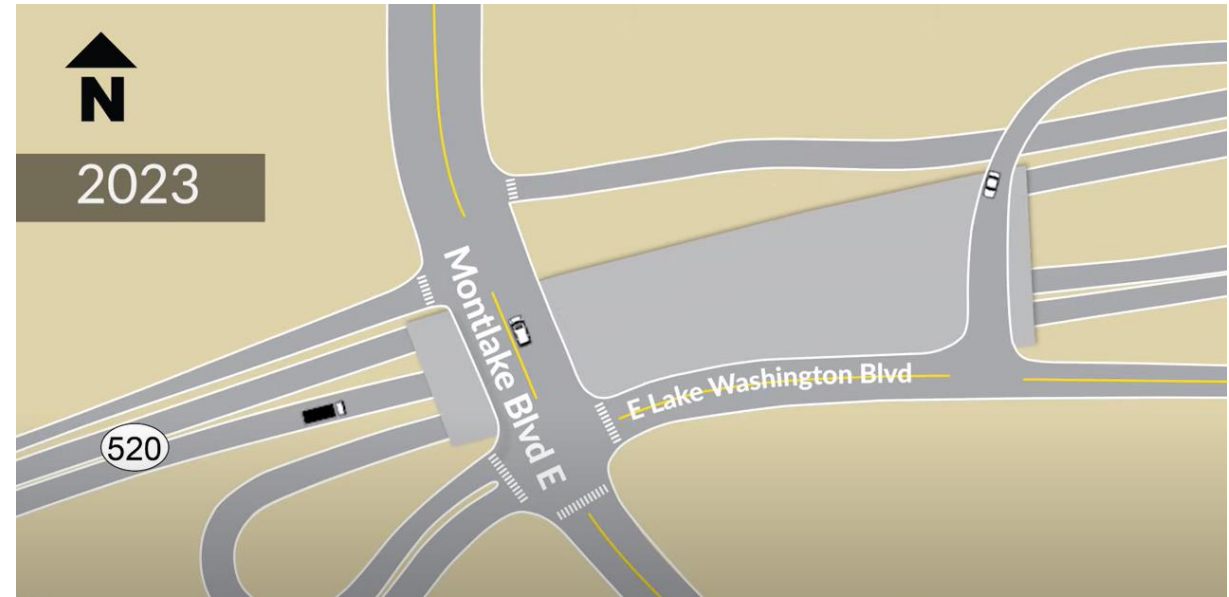


# Final traffic configuration

Now that the old overpasses are demolished, we can extend the lid to the east and west. We will shift both overpasses to their final locations in early 2023.



Temporary locations of overpasses.



Final configuration.

# Bicycle and pedestrian tunnel

We're building a tunnel under Montlake Boulevard to connect the SR 520 Trail across Lake Washington all the way to the Montlake Playfield.



## WHAT TO EXPECT

- Construction of the west side of the bicycle and pedestrian tunnel will continue in summer 2022.



Tunnel under Montlake Boulevard



# Eastbound bridge demolition

Crews continue to demolish the old bridge and have removed all of the deck spans and 149 of the 200 pier columns.



Removing deck spans and girders from the eastern edge of the project.



Using equipment hanging from cranes, crews shear the old bridge columns below the lakebed.



# Eastbound bridge construction



The bridge is being constructed using pre-fabricated columns and girders.

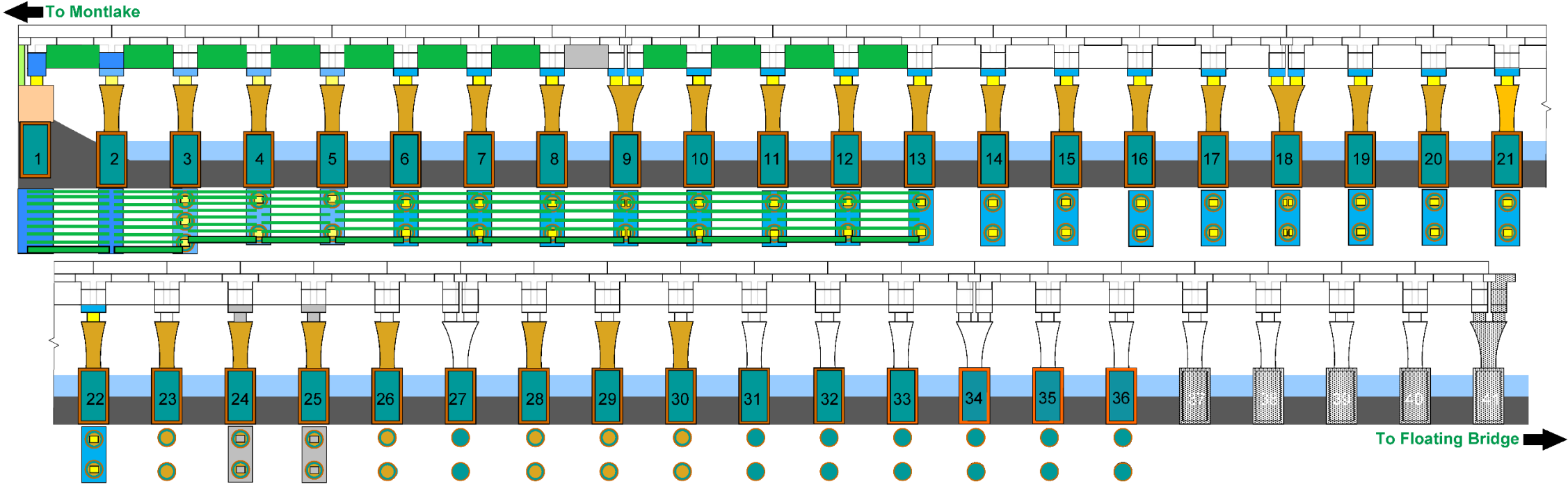
In this photo you can see the ends of girders resting on a beam placed across two columns.

So far, we've placed 58 of 80 columns and 80 of 226 girders. Decking will be poured on top of the girders.



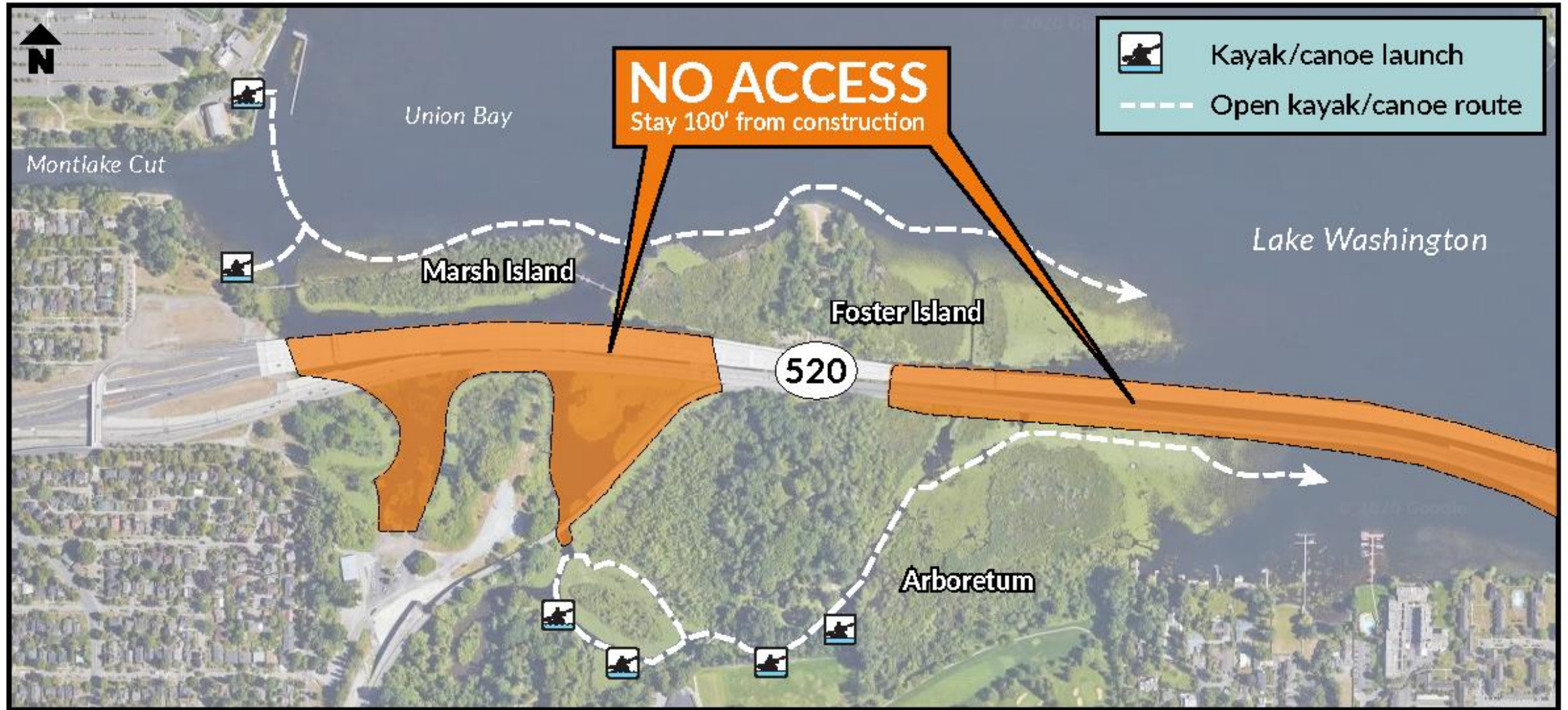
# Bridge construction progress

- Casings
- Shafts
- Girders





# Kayak/canoe access during construction



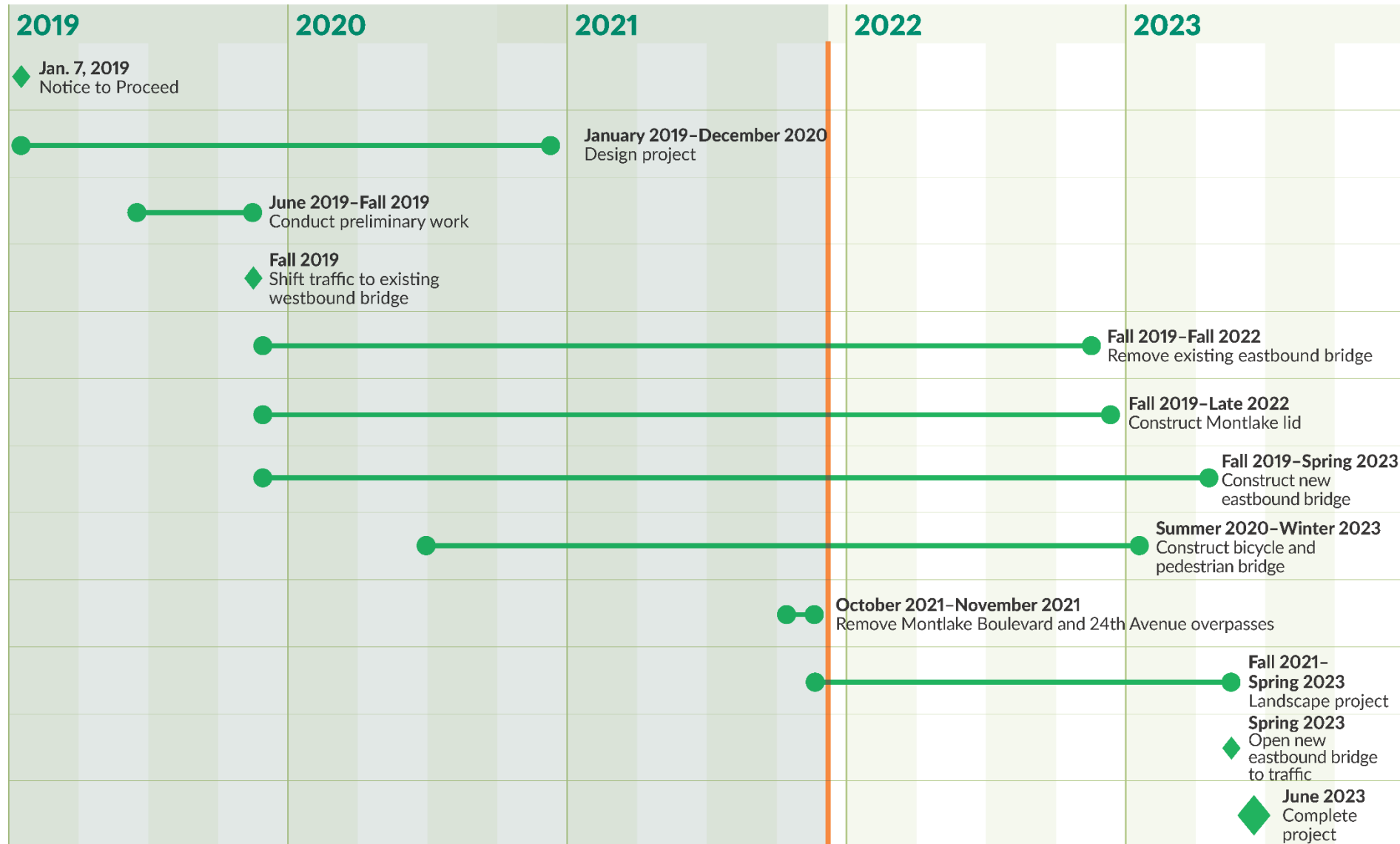


# Bicycle and pedestrian bridge



The bicycle and pedestrian bridge is starting to take shape in East Montlake Park.

# Project schedule





# What to expect: Noise and vibration

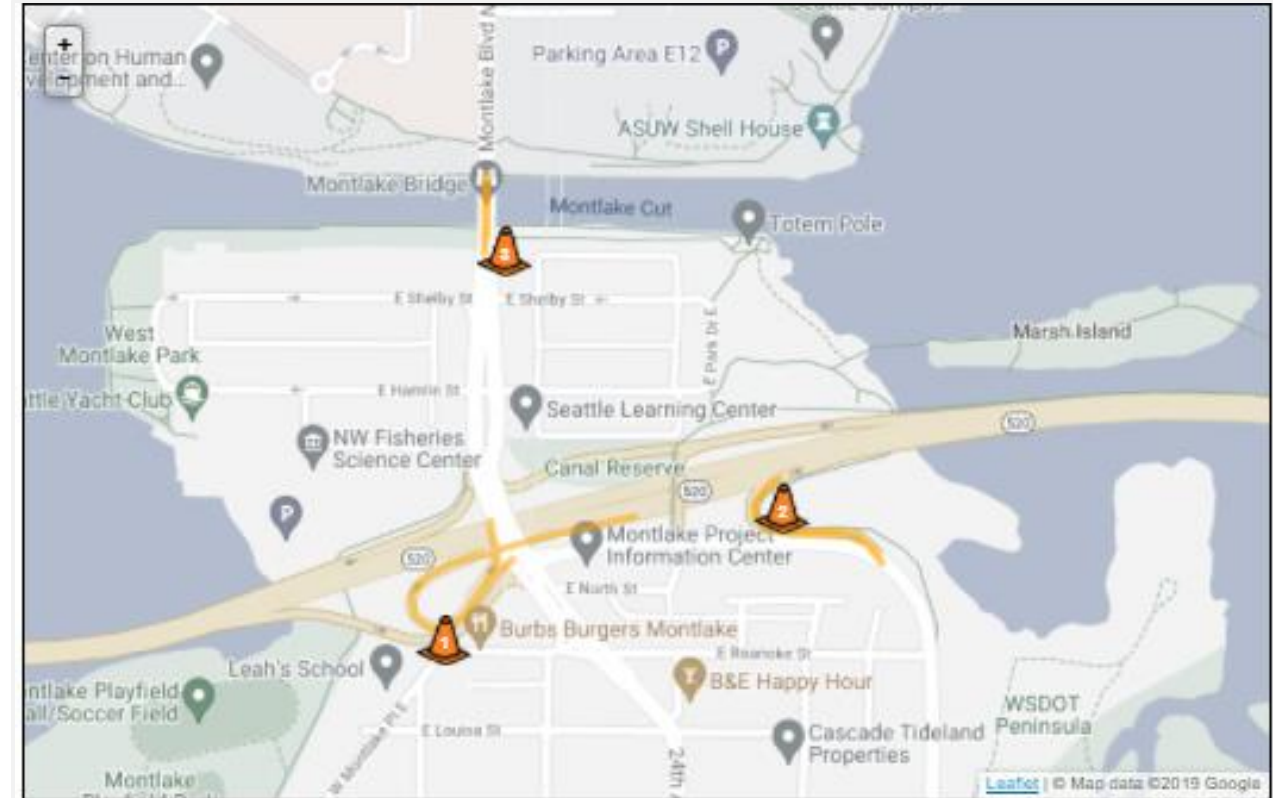
- Different types of equipment result in different levels and kinds of noise and vibration.
- Electronic noise and vibration meters record levels throughout the project area.
- Vibration monitors collect data in the field and immediately alert the project team when readings are outside the set tolerances.
- Nighttime construction has stricter rules for noise levels and equipment use.
- We've received a Major Public Project Construction Noise Variance (MPPCNV) permitting higher than normal decibel levels between the hours of 10 p.m. and 7 a.m.
- Crews may work 24 hours a day, seven days a week throughout construction.
- Typical work hours for the loudest work:
  - 7 a.m. to 10 p.m. weekdays
  - 9 a.m. to 10 p.m. weekends and holidays
  - Impact pile driving has stricter work hours and will occur:
    - 8 a.m. to 5 p.m. weekdays
    - 9 a.m. to 5 p.m. weekends
- Independent noise monitors will be present for night work to ensure compliance with specified noise levels.

Our 24-hour hotline, **206-775-8885**, is the best way to report noise and vibration concerns and to have questions addressed in the moment.

Visit the SR 520 Construction Corner to view the MPPCNV, read up on the allowable nighttime decibel levels, or read our weekly noise report:  
[www.sr520construction.com/ManagingConstructionEffects](http://www.sr520construction.com/ManagingConstructionEffects)

# How to stay informed

- Call our 24-hour hotline: [206-775-8885](tel:206-775-8885)
- Email us with questions: [sr520bridge@wsdot.wa.gov](mailto:sr520bridge@wsdot.wa.gov)
- Visit the Montlake Project website: [www.wsdot.wa.gov/projects/sr520/montlake](http://www.wsdot.wa.gov/projects/sr520/montlake)
- Visit the SR 520 Construction Corner to learn more about upcoming construction: [www.sr520construction.com](http://www.sr520construction.com)
- Follow us on Twitter: [@wsdot\\_520](https://twitter.com/wsdot_520)
- Sign up for our email updates by emailing us at [sr520bridge@wsdot.wa.gov](mailto:sr520bridge@wsdot.wa.gov)
- Watch construction in “real time” on our four construction cameras: <http://bit.ly/520cams>
- Participate in our online meetings and events



Construction Corner map.



# Montlake Bridge



WSDOT is almost finished repairing the Montlake Bridge. Next year, crews will finish the mechanical parts that raise the bridge and repave the area nearby.

# How to stay informed

## *Montlake Bridge*

- Visit the Montlake Bridge website:  
<https://bit.ly/MontlakeBridgeRehabilitation>
- Sign up for our email updates by emailing  
[sr520bridge@wsdot.wa.gov](mailto:sr520bridge@wsdot.wa.gov)
- Follow us on Twitter: [@wsdot\\_Traffic](https://twitter.com/wsdot_traffic)
- WSDOT on Facebook







Comments and questions?