

2020

A year of change

Mike Cotten, P.E., DBIA
Northwest Region Administrator

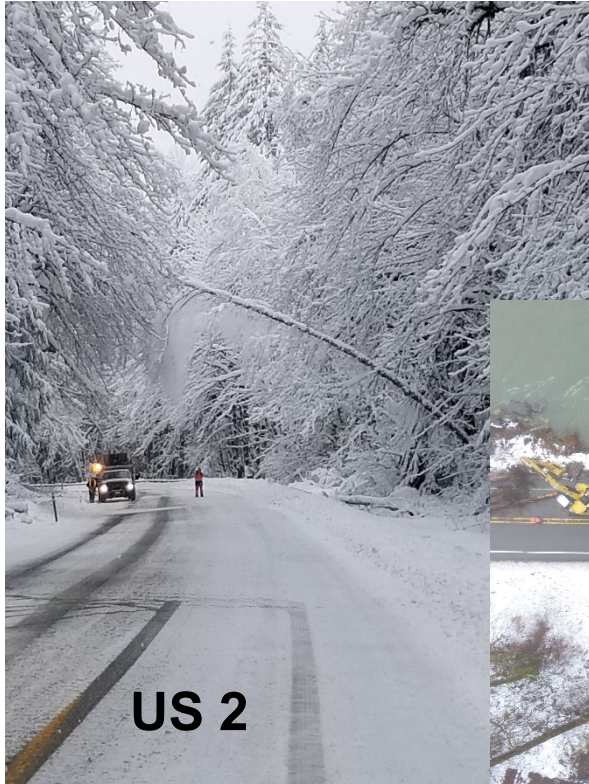
Change, challenge, resilience

US Eagle Falls



- Region employees adapted in 2020
- Delivered projects and programs to support the traveling public
- Priorities:
 - Safety for all users
 - System preservation
 - Fish passage

Emergencies before the emergency



2020 Construction

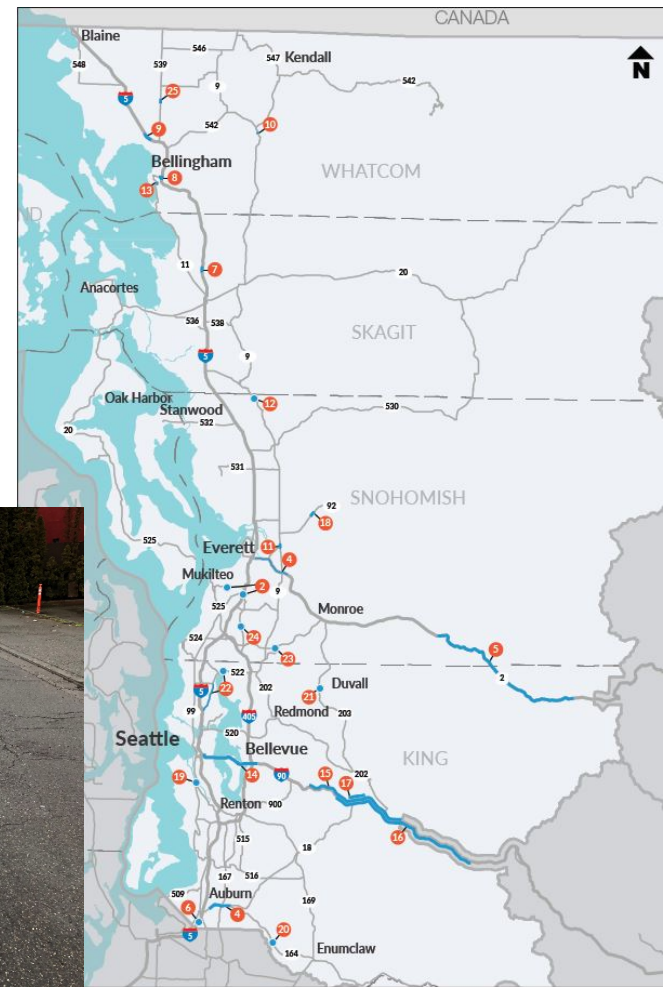
Undersized culvert
SR 11/Hoag's Creek



I-90 noise wall



Paving SR 522



COVID-19 changed everything

Stay Home. Stay Healthy.

All gatherings are prohibited.

All non-essential businesses must close

unless employees can work from home.

Grocery stores, pharmacies, banks and other essential businesses may stay open.
Restaurants can continue to offer take-out and delivery.



Office of Governor Jay Inslee



Resuming construction



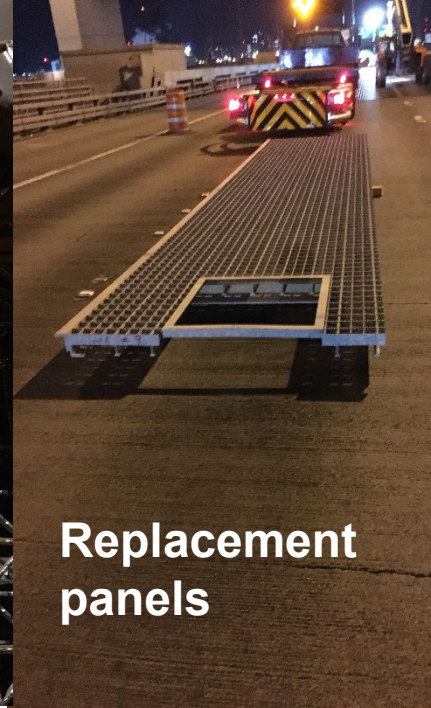
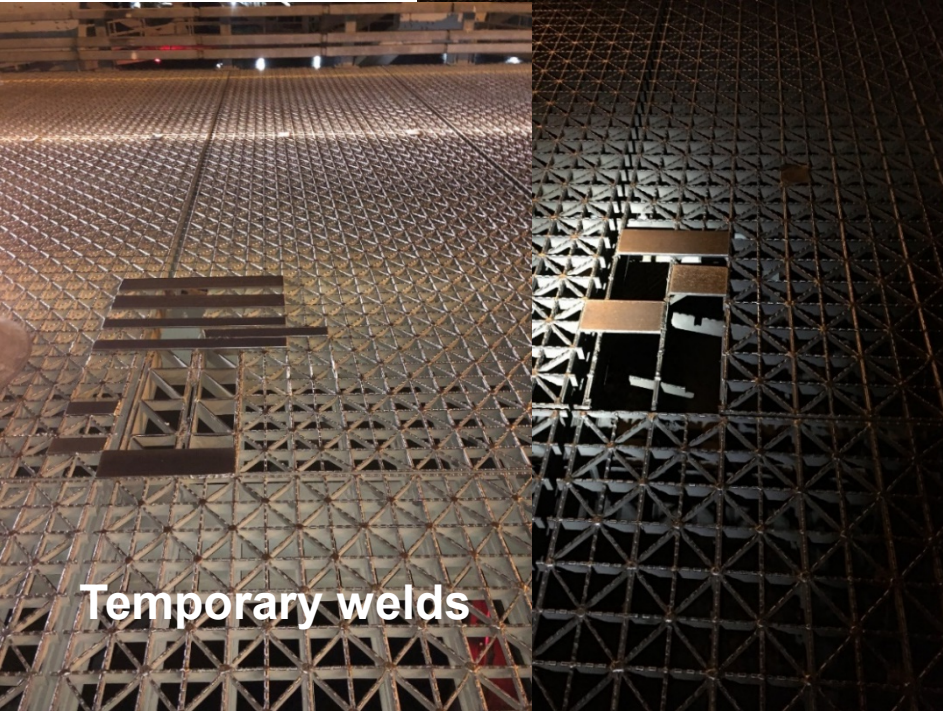
New safety measures

Delivering success SR 203 Loutsis Creek



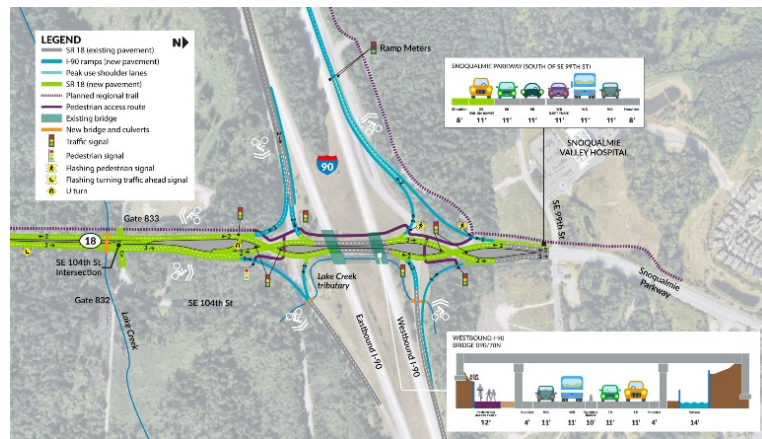
Delivering success

SR 99 First Ave. South Bridge



Delivering success SR 530 Trafton Creek





Construction program

A photograph of construction workers on a road project. In the foreground, a worker in a white shirt and high-visibility vest is working on a concrete curb. In the background, other workers in high-visibility vests are working on a dirt embankment. A large concrete structure is visible on the left, and a WSDOT logo is in the top right corner.

- 2018 - 2020
 - Average 32 construction contracts per year advertised
 - Average construction costs: \$5 Million
- Total construction costs of 2020 AD projects: \$126 Million
- Current active design projects: 84

Fish passage

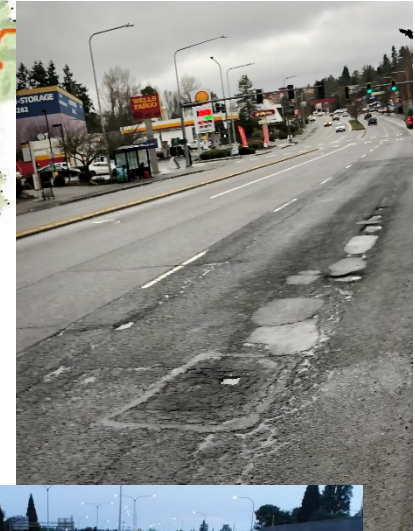
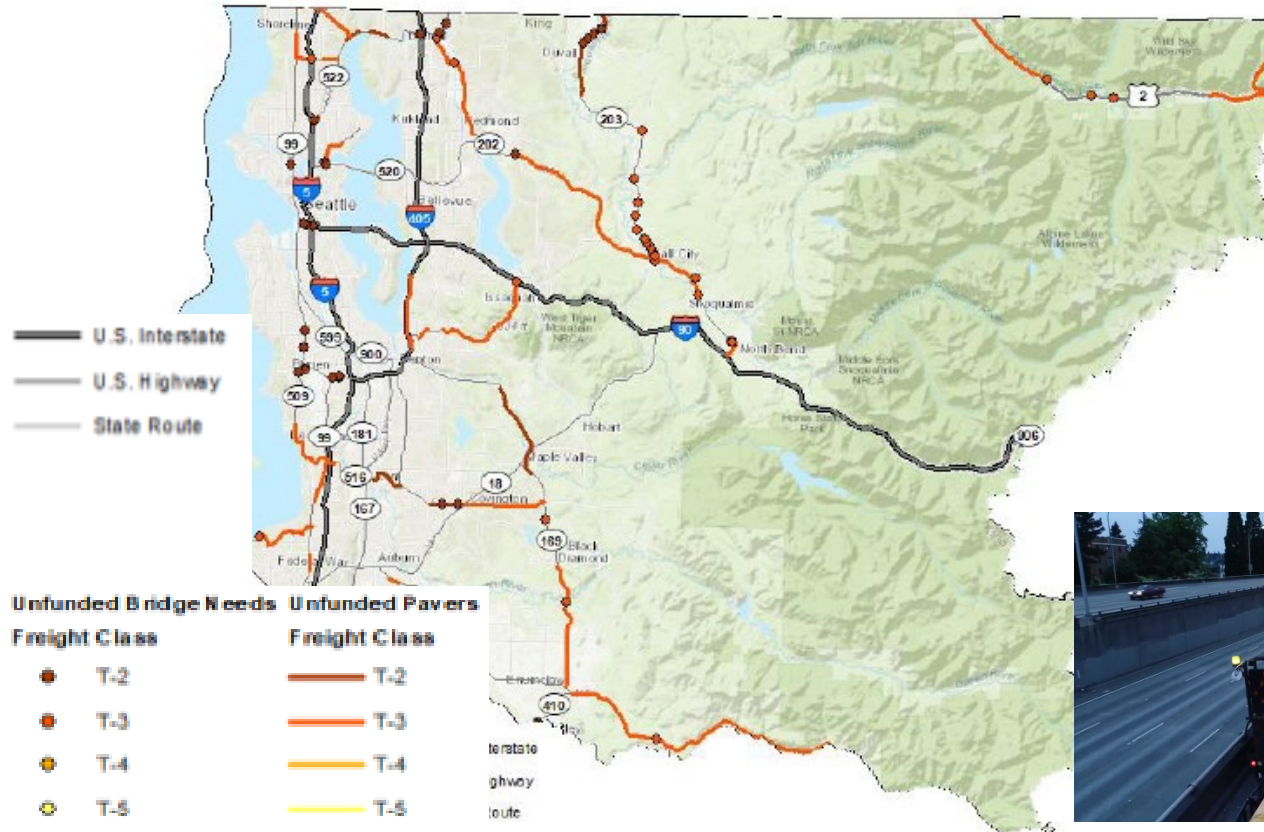
- **NWR Fish Barriers: ~709**
 - Injunction barriers requiring correction: ~526
 - Injunction barriers requiring correction by 2030: ~245
- **50 barriers corrected**
- **193 miles of habitat opened**

SR 531 Edgecomb Creek
Photo credit: Everett Herald

**SR 531 Edgecomb
Creek**

Before construction

Priorities: State of Good Repair



Unique assets



I-90 floating bridges



SR 99 Tunnel



I-5 Convention Center



SR 520 floating bridge

Bridges in NWR

- 1,270
- 35% of WSDOT inventory

Tunnels

- 25
- 20,000 light fixtures

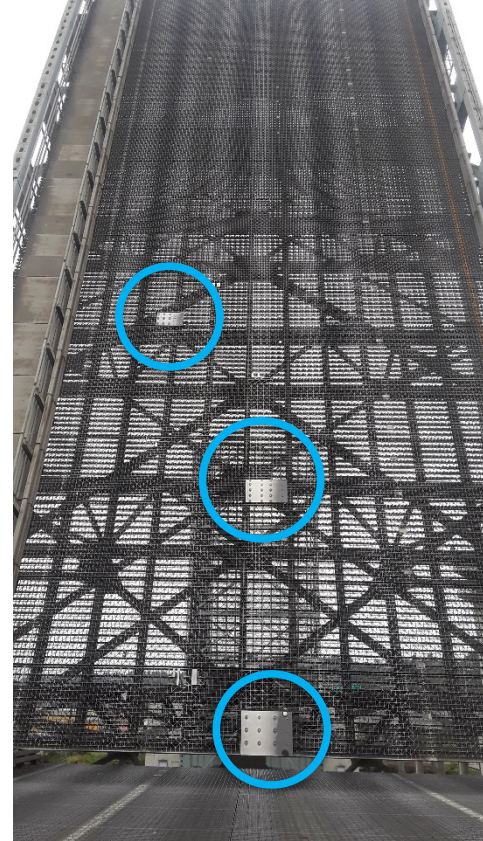


I-90 Mount Baker

Aging bridge inventory

3,608 bridges statewide
1,270 bridges in NWR

- Moveable
- Floating
- Require special maintenance and preservation efforts



Northwest Region tunnel inventory

I-90 Mt. Baker – 3,500 feet

Mercer Island Lid – 2,900 feet

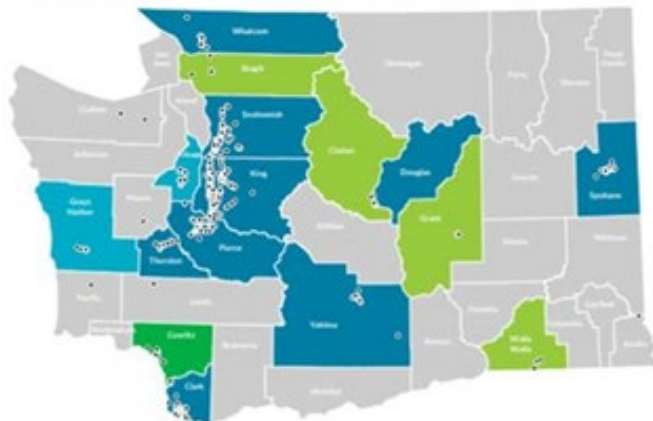
SR 99 Tunnel – 11,338 feet

- 8 miles of walls to wash
- 8 miles of fluorescent lighting
- 560 drainage structures to clean
- 98 emergency phones
- 17 jet fans
- 8 extraction fans
- 156 cameras



Issues along the right of way

Map of Washington state homeless encampment sites on WSDOT property



Number of homeless campsites per county

0-2 3-10 11-20 21-30 More than 30 • Sites

County with the largest amount of homeless encampment sites:

King County

Top five counties with the most encampment sites:

1. King (800 sites)
2. Snohomish (213 sites)
3. Clark (191 sites)
4. Pierce (134 sites)
5. Spokane (101 sites)



- New safety protocols due to COVID-19
- WSDOT work limited to litter removal from unoccupied areas
- Continued coordination with local agencies

Looking ahead to 2021

Northwest Region priorities:

- Maintenance of the system
- Project delivery:
 - Preservation
 - Fish passage
 - Safety
 - Connecting Washington
- Continued coordination with local partners

