

# Montlake Project

## Monthly Construction Update

Nov. 10, 2021

*We will pause for just a moment while  
Zoom adds everyone to the meeting.*

# Major project elements

The Montlake Project will improve transportation for motorized and nonmotorized travel along the SR 520 corridor, including:

- A new eastbound bridge
- Montlake lid
- Bicycle and pedestrian bridge



Illustration of major project elements.



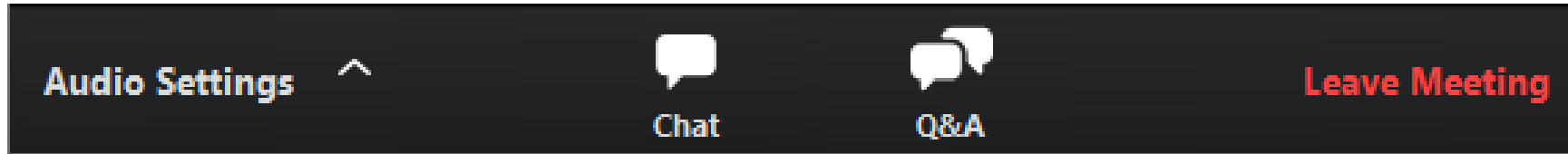
Construction of new eastbound bridge.

# How to participate in the webinar

**All attendees are muted.**  
To adjust your audio settings  
during the meeting, click on  
**Audio Settings.**



Please use the  
**Q&A window** to ask  
questions or offer  
comments.



**CHAT** is disabled during the presentation.  
Please communicate with the team through  
the **Q&A window**.



# Agenda

- Current and upcoming work
- How to stay informed
- Comments and questions

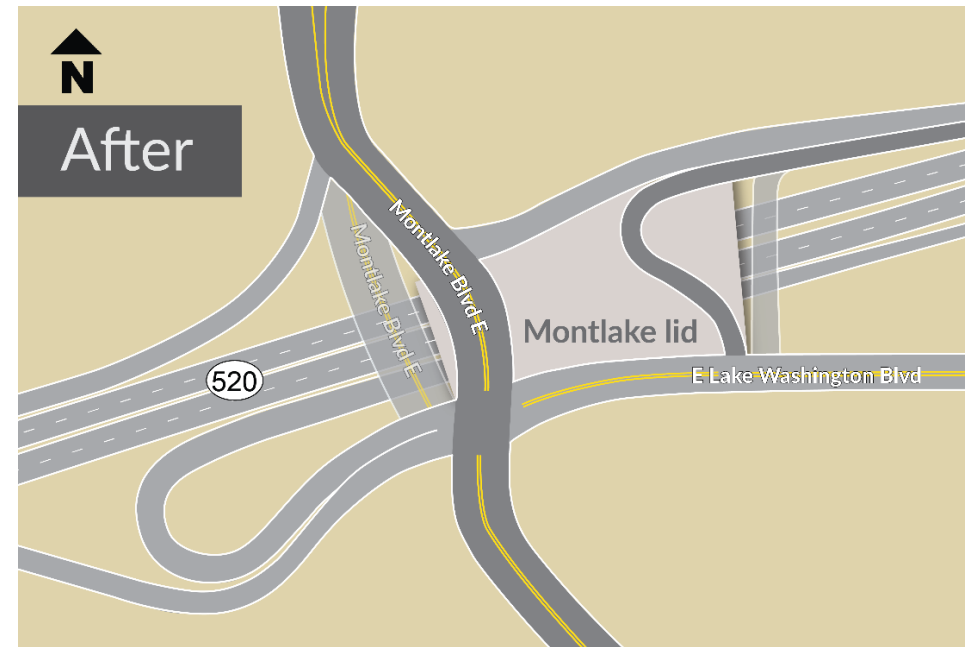
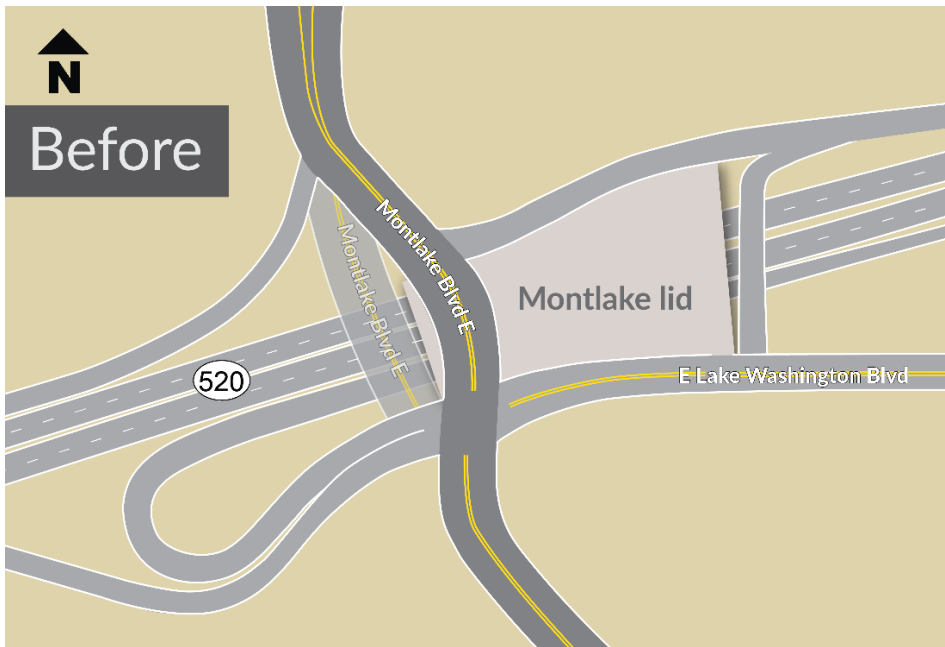


Removing Montlake Boulevard overpass – Oct. 23, 2021.

# Overpass shifts and demolition

## Schedule (subject to change)

- ✓ Aug. 27 – 30: Shift Montlake Boulevard overpass
- ✓ Oct. 22 – 25: Demolish Montlake Boulevard overpass
- ✓ Oct. 29 – Nov. 1: Shift Lake Washington Boulevard off-ramp
- Nov 19 – 22: Demolish Lake Washington Boulevard off-ramp



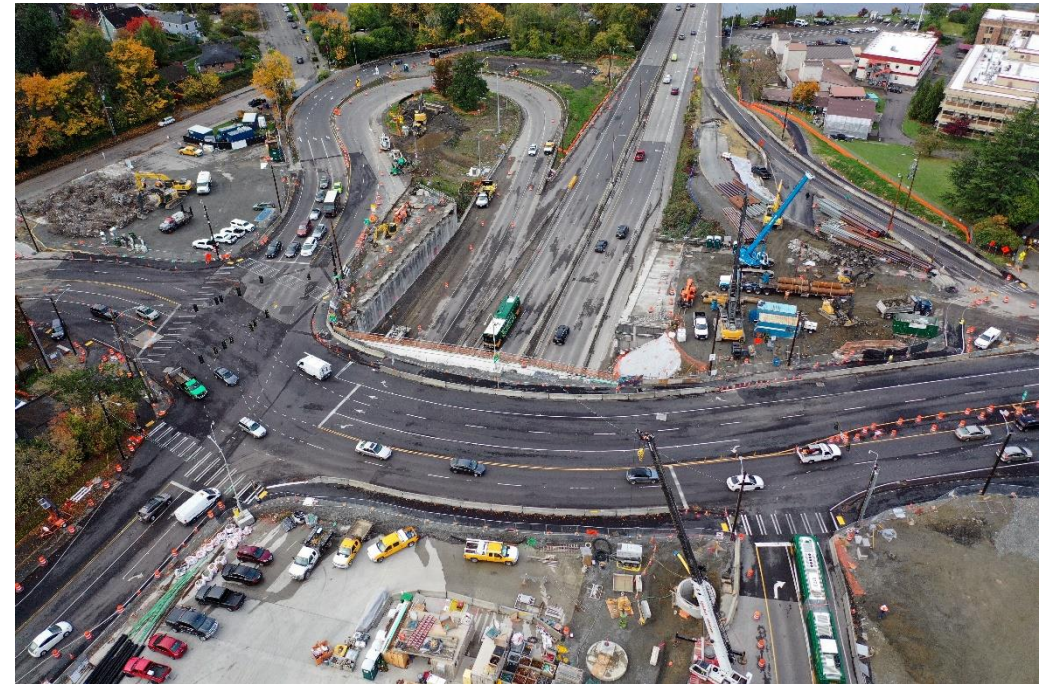
# Demolishing the overpasses

The Montlake overpass was demolished during the Oct. 22 – 25 weekend.

View our Montlake overpass demolition video: [https://www.youtube.com/watch?v=aNeold3B\\_fY](https://www.youtube.com/watch?v=aNeold3B_fY)



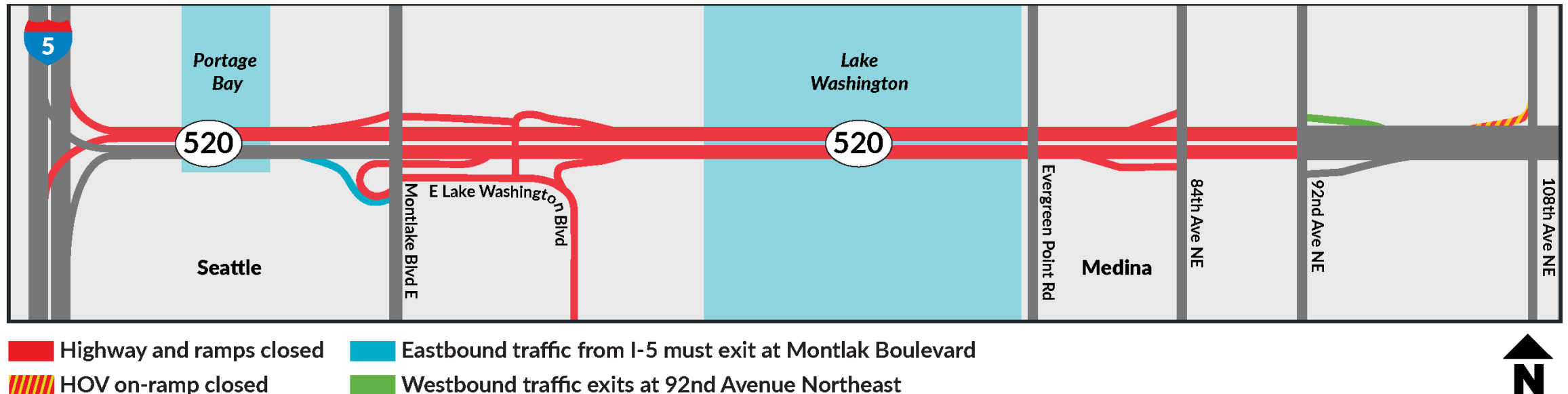
Before: Montlake overpass, Sept. 13, 2021.



After: Montlake overpass, Oct. 27, 2021.

# Demolishing the overpasses

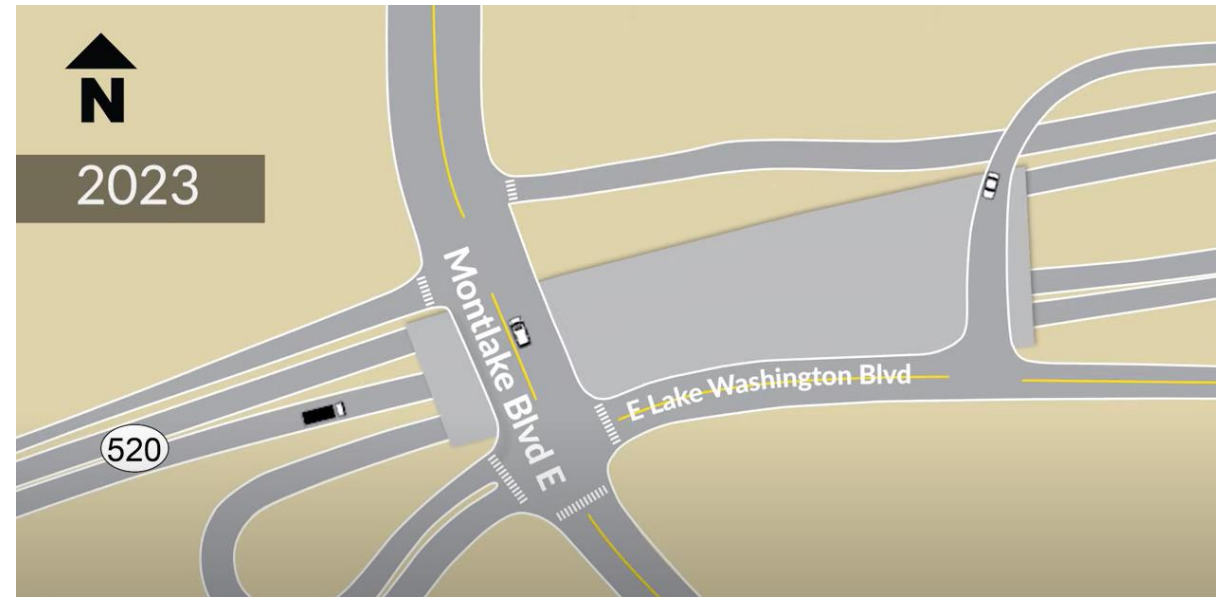
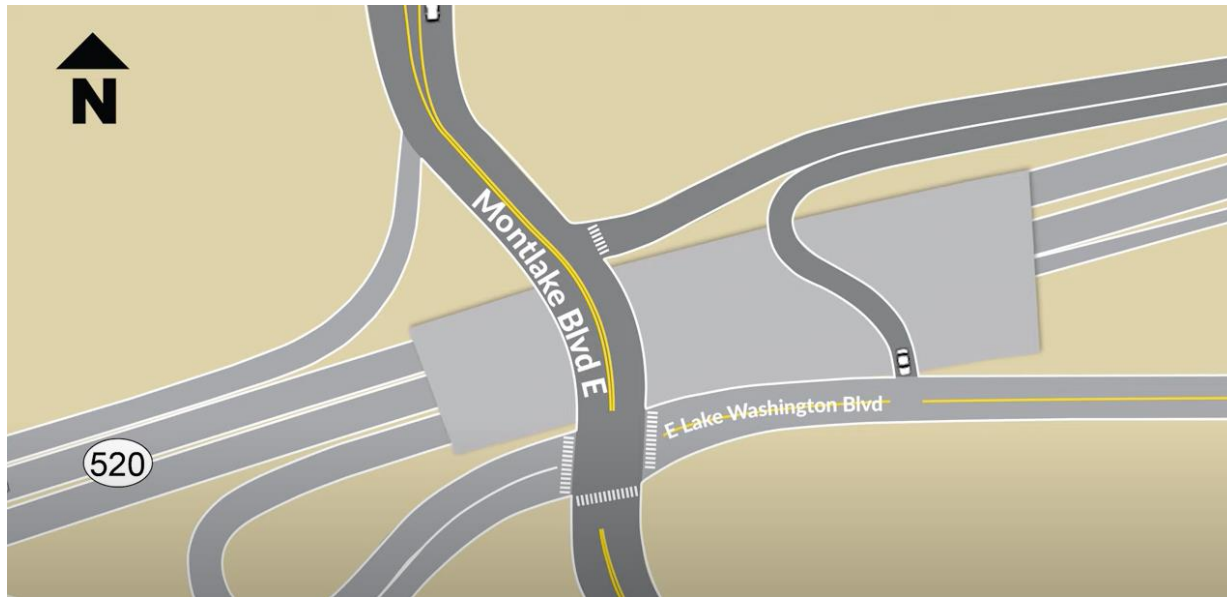
Removal of the Lake Washington Boulevard off-ramp (24th Avenue East) is scheduled for the Nov. 19 – 22 weekend. SR 520 will be closed in both directions.



# Final traffic configuration

After we remove the Lake Washington Boulevard overpass, we will extend the lid to the east and west.


Then, we'll shift Montlake Boulevard and 24th Avenue East again, into their final configuration. This is scheduled to occur in early 2023.



# Bicycle and pedestrian tunnel

We're building a tunnel under Montlake Boulevard to connect the SR 520 Trail across Lake Washington all the way to the Montlake Playfield.



 Tunnel under Montlake Boulevard



Excavating tunnel east of Montlake Boulevard.

## WHAT TO EXPECT

- Crews finished work on the east side of Montlake Boulevard.
- Construction of the west side will continue in summer 2022.

# Eastbound bridge demolition

Crews continue to demolish the old bridge and have removed all of the deck spans and 145 of the 196 pier columns.



Removing the last deck spans and girders from the eastern edge of the project.



Using equipment hanging from cranes, crews shear the old bridge columns below the lakebed.

# Eastbound bridge construction

To protect migrating fish, we paused vibratory work east of Foster Island last April. Crews have resumed this work. Crews use vibratory hammers and pile drivers to install steel casings into the ground. After the casings are installed, crews insert rebar cages and fill them with concrete, creating underwater platforms for the columns that will support the new eastbound bridge.



Steel casings are installed with vibratory pile driving.

## WHAT TO EXPECT

- Noise and vibrations, especially for homes in Madison Park close to the water.
- Some work at night in November as crews drill out lakebed material from inside the casings and place concrete.
- Concrete pumps and mixers will access the work site from the existing bridge deck.

*Typical work hours are Monday to Saturday, 7 a.m. to 10 p.m. and weekends and holidays, 9 a.m. to 10 p.m.*

# Eastbound bridge construction



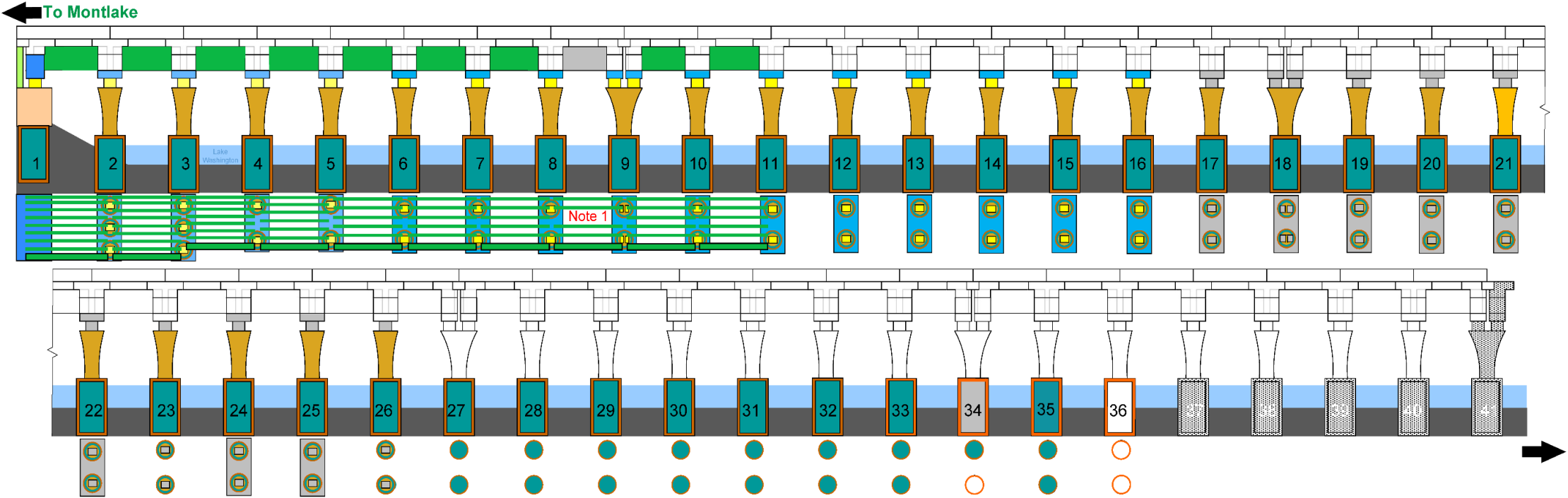
Once the casings are installed, we bring in pre-fabricated columns and girders.

In this photo you can see the ends of girders resting on a beam placed across two columns.

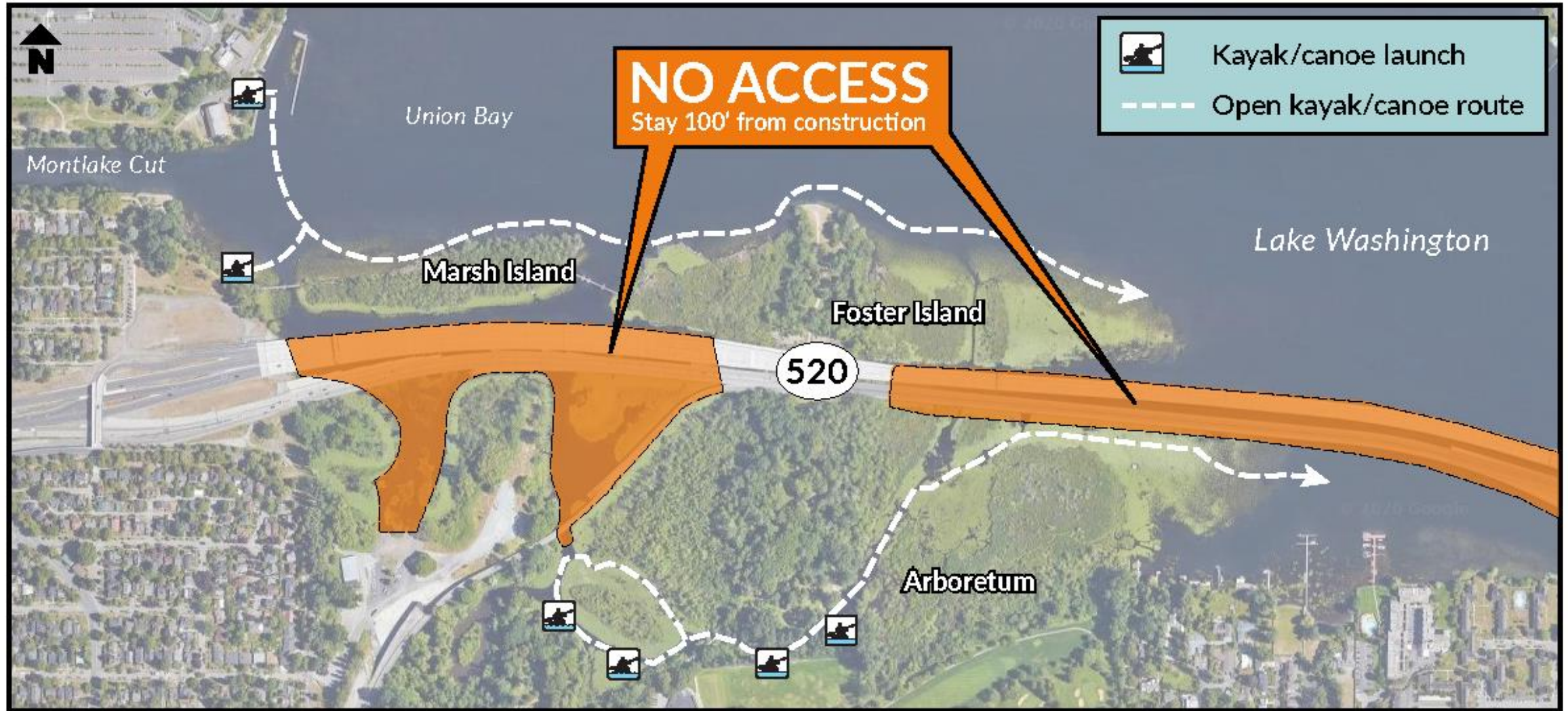
So far, we've placed 53 of 80 columns and 68 of 225 girders. Pre-cast decking will be placed on top of the girders.

# Bridge construction progress

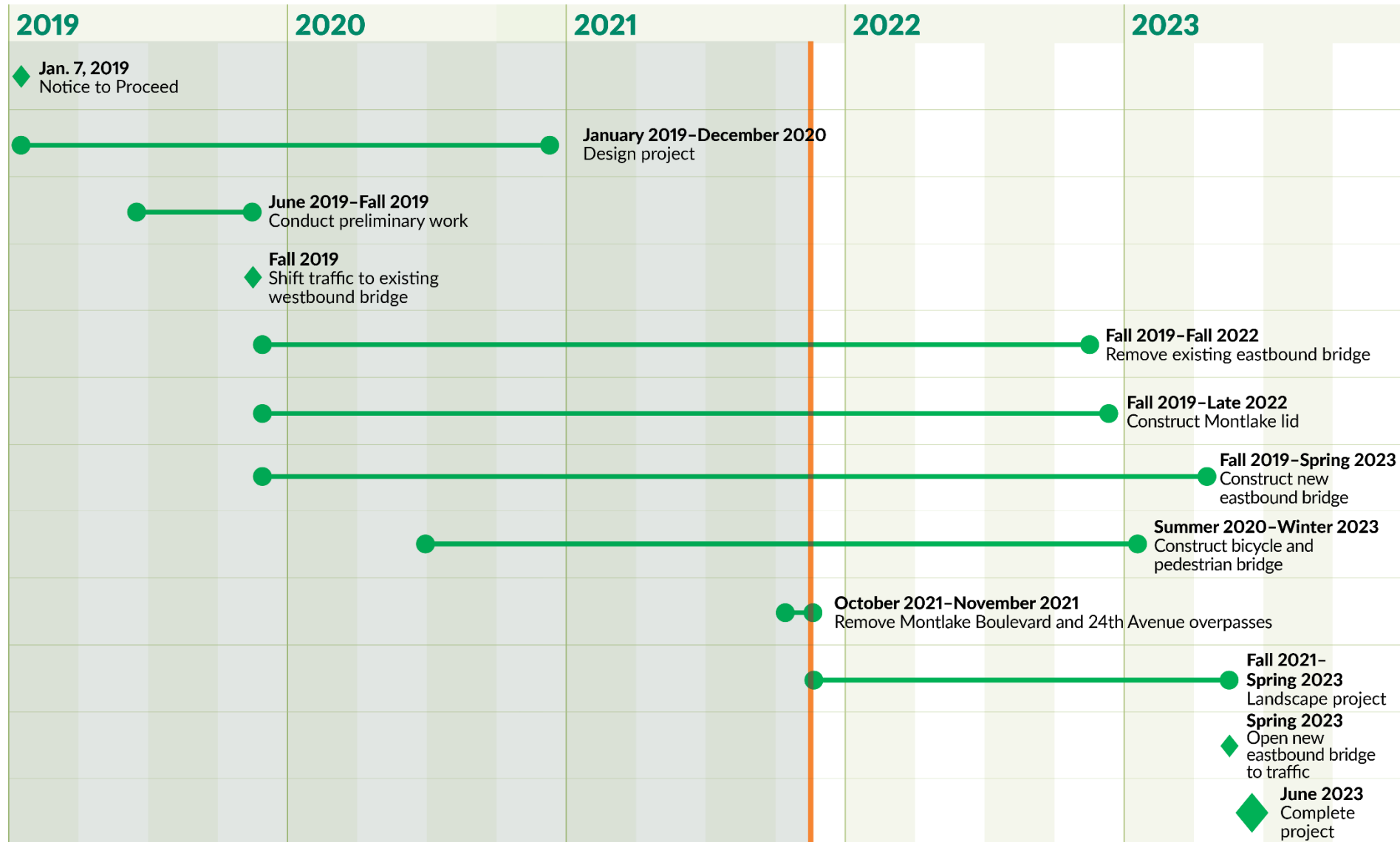
○ Casings  
● Shafts



# Kayak/canoe access during construction



# Project schedule



# What to expect: Noise and vibration

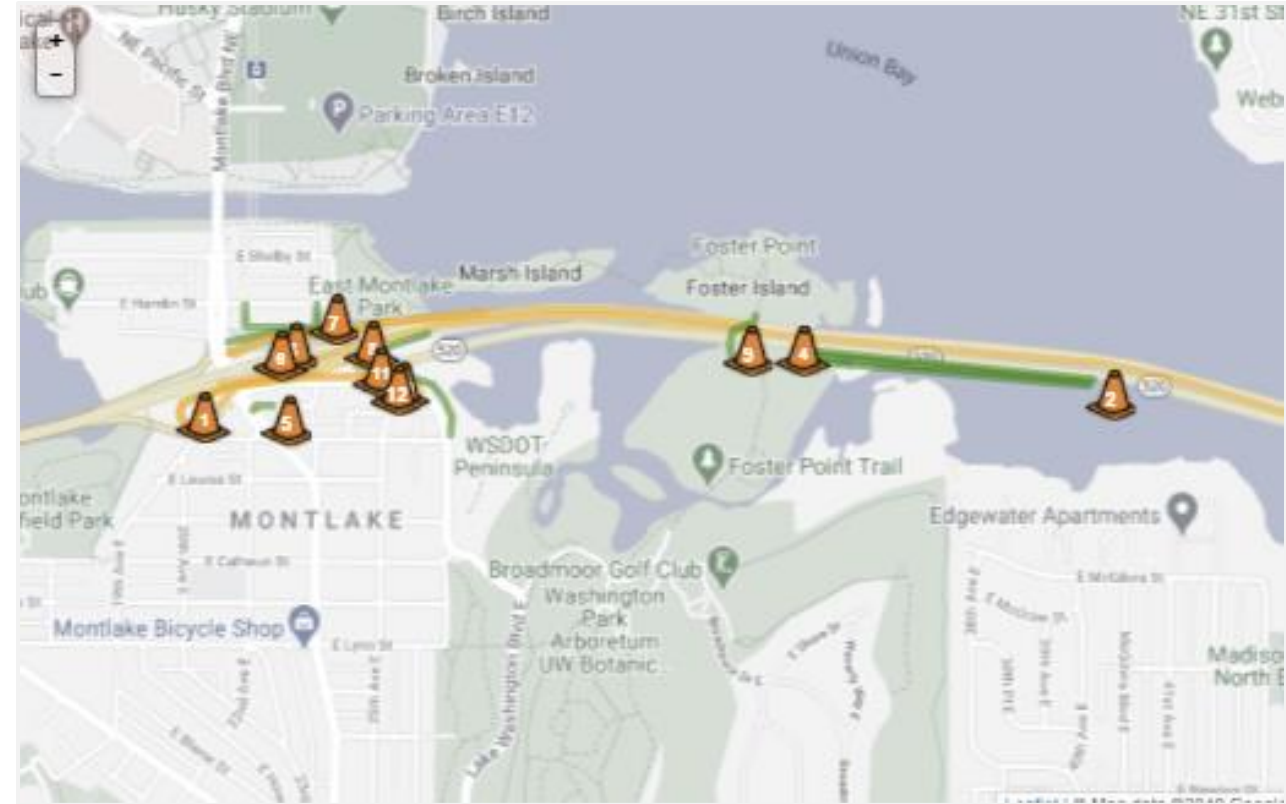
- Different types of equipment result in different levels and kinds of noise and vibration.
- Electronic noise and vibration meters record levels throughout the project area.
- Vibration monitors collect data in the field and immediately alert the project team when readings are outside the set tolerances.
- Nighttime construction has stricter rules for noise levels and equipment use.
- We've received a Major Public Project Construction Noise Variance (MPPCNV) permitting higher than normal decibel levels between the hours of 10 p.m. and 7 a.m.
- Crews may work 24 hours a day, seven days a week throughout construction.
- Typical work hours for the loudest work:
  - 7 a.m. to 10 p.m. weekdays
  - 9 a.m. to 10 p.m. weekends and holidays
  - Impact pile driving has stricter work hours and will occur:
    - 8 a.m. to 5 p.m. weekdays
    - 9 a.m. to 5 p.m. weekends
- Independent noise monitors will be present for night work to ensure compliance with specified noise levels.

Our 24-hour hotline, **206-775-8885**, is the best way to report noise and vibration concerns and to have questions addressed in the moment.

Visit the SR 520 Construction Corner to view the MPPCNV, read up on the allowable nighttime decibel levels, or read our weekly noise report:  
[www.sr520construction.com/ManagingConstructionEffects](http://www.sr520construction.com/ManagingConstructionEffects)

# How to stay informed

- Call our 24-hour hotline: [206-775-8885](tel:206-775-8885)
- Email us with questions: [sr520bridge@wsdot.wa.gov](mailto:sr520bridge@wsdot.wa.gov)
- Visit the Montlake Project website: [www.wsdot.wa.gov/projects/sr520/montlake](http://www.wsdot.wa.gov/projects/sr520/montlake)
- Visit the SR 520 Construction Corner to learn more about upcoming construction: [www.sr520construction.com](http://www.sr520construction.com)
- Follow us on Twitter: [@wsdot\\_520](https://twitter.com/wsdot_520)
- Sign up for our email updates by emailing us at [sr520bridge@wsdot.wa.gov](mailto:sr520bridge@wsdot.wa.gov)
- Watch construction in “real time” on our four construction cameras: <http://bit.ly/520cams>
- Participate in our online meetings and events



Construction Corner map.

# Montlake Bridge

## Weekend mechanical work

Full bridge closures on the following weekends  
**(10 p.m. Friday to 5 a.m. Monday)**

- ✓ Sept. 10-13
- ✓ Oct. 8-11
  - Placed new grid decks and stringers
- X Oct. 22-25 (rescheduled for spring 2022)
- ✓ Oct. 29-Nov. 1
- Nov. 19-22



### Pedestrian Shuttle

Active anytime both bridge sidewalks are closed.

**South side pickup:** Southbound Montlake Boulevard, south of Hamlin Street

**North side pickup:** Westbound Pacific Street, west of Montlake Boulevard near existing bus stop

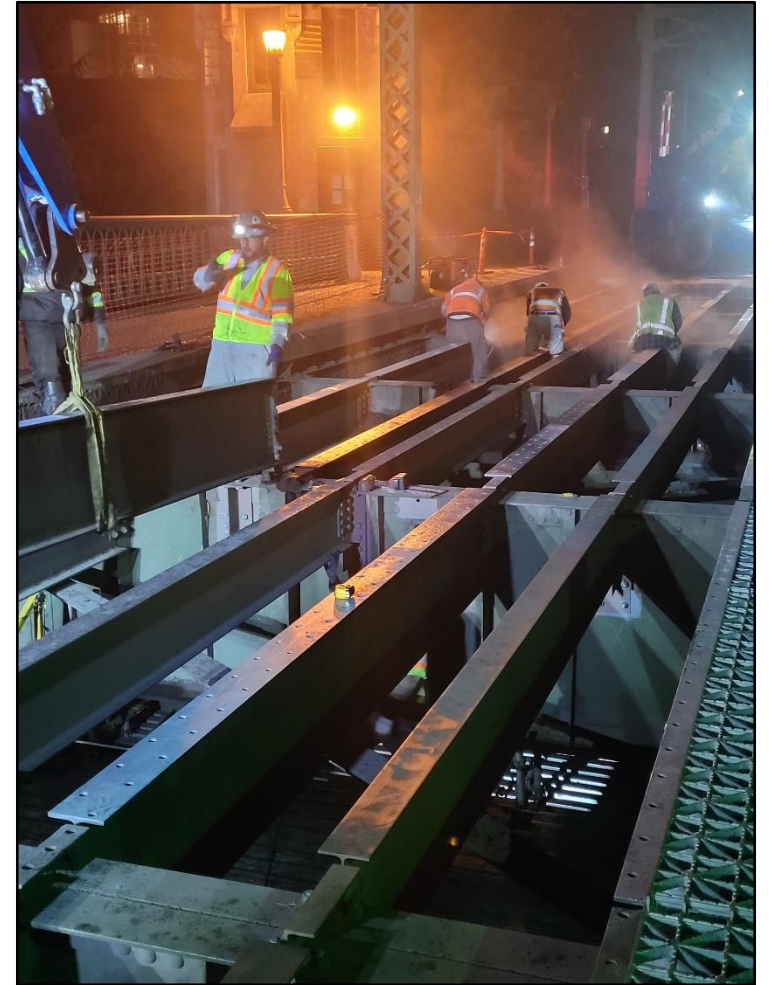
# Montlake Bridge

## Northbound closed nightly

- 9 p.m. to 5 a.m. nightly closures
  - Pedestrian and bicycle access maintained
- 

**Sunday, Nov. 14, to the morning of  
Friday, Nov. 19:**

- Northbound closed with detour to I-5
- Southbound reduced to one lane

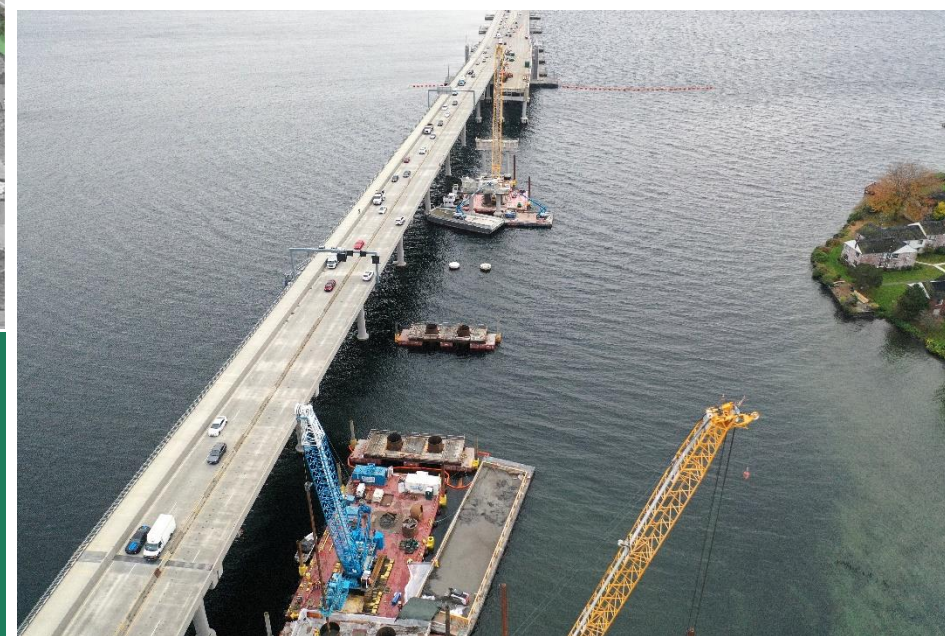
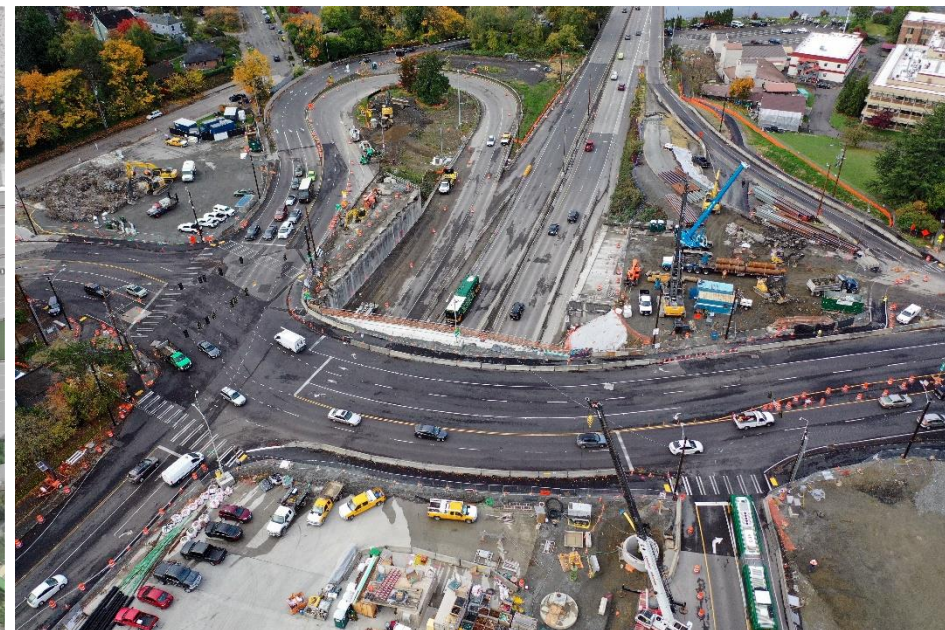


# How to stay informed

## *Montlake Bridge*

- Visit the Montlake Bridge website:  
<https://bit.ly/MontlakeBridgeRehabilitation>
- Sign up for our email updates by emailing  
[sr520bridge@wsdot.wa.gov](mailto:sr520bridge@wsdot.wa.gov)
- Follow us on Twitter: [@wsdot\\_Traffic](https://twitter.com/wsdot_traffic)
- WSDOT on Facebook





Comments and questions?