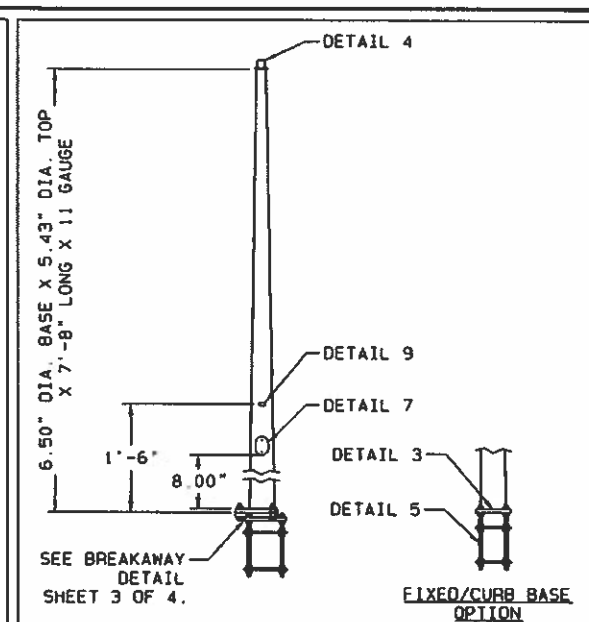
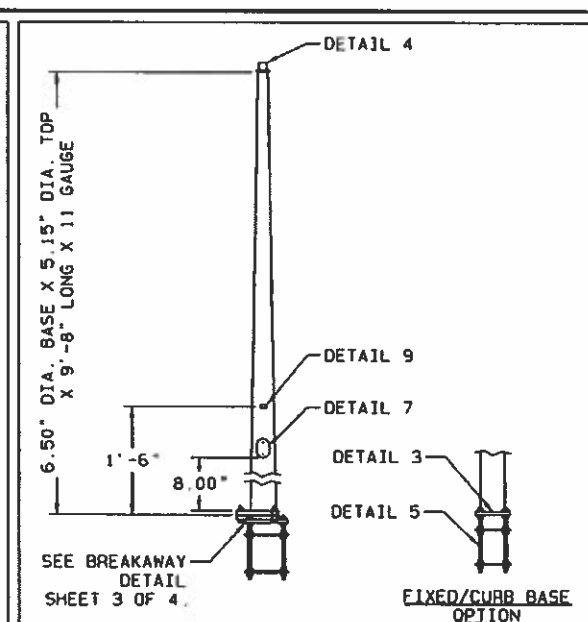


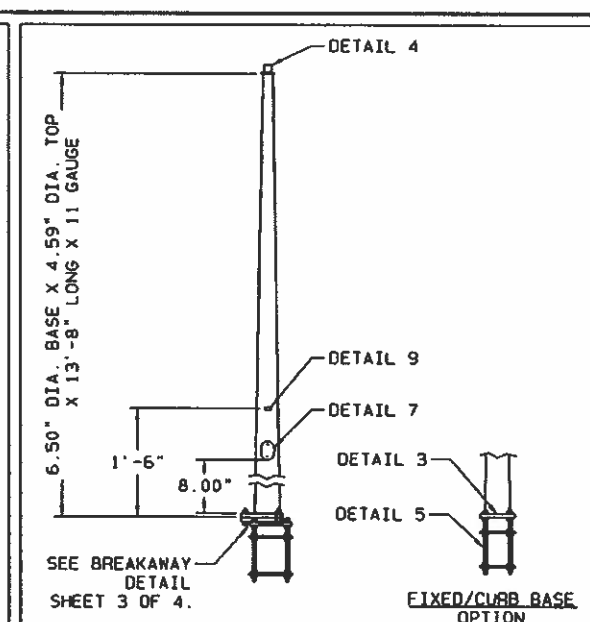
QTY. STD.:	
QTY. CURB:	
QTY. BREAKWAY:	
TYPE PPB POST	



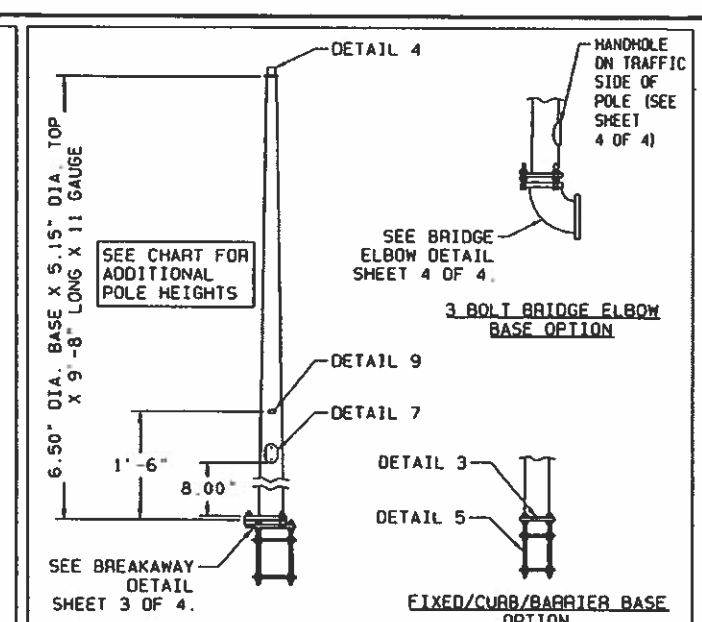
QTY. SLIP BASE:	
QTY. SLIP BASE ON CURB:	
QTY. 4 BOLT FIXED BASE:	
QTY. 4 BOLT CURB BASE:	
TYPE PS POLE	



QTY. SLIP BASE:	
QTY. SLIP BASE ON CURB:	
QTY. 4 BOLT FIXED BASE:	
QTY. 4 BOLT CURB BASE:	
TYPE I POLE	



QTY. SLIP BASE:	
QTY. SLIP BASE ON CURB:	
QTY. 4 BOLT FIXED BASE:	
QTY. 4 BOLT CURB BASE:	
FLASHING BEACON POLE	



QTY. SLIP BASE:	
QTY. SLIP BASE ON CURB:	
QTY. 4 BOLT FIXED BASE:	
QTY. 4 BOLT CURB BASE:	
QTY. 3 BOLT BRIDGE ELBOW:	
RAMP METER POLE	

MATERIAL DATA		
COMPONENT	DESIGNATION	MIN. YIELD (KSI)
POLE SHAFT-TYPE PPB POST	A53 GR. B	35
	A501	36
	A513 GR. 1015	35
	A618	50
	A500 GR. B	42
POLE SHAFT-TYPE PS, TYPE I, RAMP METER, FLASHING BEACON	A595 GR. A	55
BASE PLATE	A36	36
	A572 GR. 50 OR 55	50
BOTTOM SLIP PLATE	A572 GR. 50	50
ANCHOR PLATE	A572 GR. 50	50
PLATE WASHERS	A36	36
	A572 GR. 50 OR 55	50
KEEPER PLATE (COATING: 690)	A653 GR. 33	--
TOP PLATE	A36	36
	A572 GR. 50 OR 55	50
PIPING/TUBING	SEE "PPB POLE SHAFT" MATERIAL	
HANDHOLE RIM	A500 GR. B	42
ANCHOR BOLTS	F1554 GR. 55	55
NUTS	ASTM A563 GR. DH	--
WASHERS	ASTM F463	--
GALVANIZING - STRUCTURE	A123	--
GALVANIZING - HARDWARE	F2329	--

**DESIGN CRITERIA:**  
 THE PEDESTRIAN POLE STRUCTURES SHOWN ON THIS DRAWING HAVE BEEN DESIGNED IN ACCORDANCE WITH THE LOADING AND STRENGTH REQUIREMENTS OF THE 2015 AASHTO "LRFD SPECIFICATIONS FOR STRUCTURAL SUPPORTS FOR HIGHWAY SIGNS, LUMINAIRES, AND TRAFFIC SIGNALS, FIRST EDITION" SLTS-1 INCLUDING LATEST INTERIMS. THE WIND LOADS WERE CALCULATED FROM AN ULTIMATE WIND VELOCITY OF 115 MPH WITH A MEAN RECURRENCE INTERVAL OF 1700 YEARS.

**WELD INSPECTION:**  
 1. WELDING INSPECTION SHALL BE IN ACCORDANCE WITH THE REQUIREMENTS OF WASHINGTON STATE DEPARTMENT STANDARD SPECIFICATION 6-03.3(25) AND 2015 AASHTO WELD INSPECTION SECTION 14.5.3.  
 2. ALL LONGITUDINAL SEAM WELDS SHALL BE INSPECTED BY MAGNETIC PARTICLE METHOD FOR 30% OF LENGTH EXCEPT FOR SHAFT THICKNESSES 0.3125" AND GREATER SHALL BE ULTRASONIC METHOD. MAGNETIC PARTICLE TESTING SHALL BE PERFORMED ON BOTH SIDES OF 100% PENETRATION SEAM WELD WHEN BACKING IS NOT USED EXCEPT FOR TUBES LESS THAN 10.5 INCHES. FOR TUBES 6 TO 10.5 INCHES, 2" SHALL BE INSPECTED BY THE TEST METHOD BASED ON THICKNESS. FOR TUBES LESS THAN 6", VT ONLY PRIOR TO GALV.

**WELDING:**  
 WELDING OF STRUCTURES SHALL BE IN ACCORDANCE WITH 2015 EDITION OF THE AWS STRUCTURAL WELDING CODE D1.1-STEEL. 60% PENETRATION REQUIRED FOR ALL SEAM WELDS EXCEPT FOR THE FOLLOWING LOCATIONS REQUIRE 100% PENETRATION:  
 1. 6 INCHES ADJACENT TO BASEPLATE, FLANGE AND BUTT WELDED SHAFTS; EXCEPT FOR TUBES LESS THAN 5 INCH DIAMETER  
 2. FOR FEMALE SECTION OF SLIP JOINTED TUBES 10" AND GREATER: 1.5 X FEMALE SECTION INSIDE DIAMETER + 6 INCHES  
 3. FOR FEMALE SECTION OF SLIP JOINTED TUBES LESS THAN 10": FEMALE SECTION NOMINAL DIAMETER

**GENERAL NOTE:**  
 1. ALL VEHICULAR AND OR PEDESTRIAN SIGNAL LIGHTS AND NECESSARY HARDWARE FOR ATTACHMENT TO BE FIELD LOCATED AND FURNISHED BY OTHERS.  
 2. FINAL ASSEMBLIES TO HAVE 0.06" RADIUS ON ALL EXPOSED EDGES.

**DESIGN INFORMATION**

THE FOLLOWING 2015 AASHTO REQUIREMENT IS BEING FOLLOWED:  
 1. SECTION 5.6.6 FOR HANDHOLE CLEAR DISTANCE AND 40% OF POLE WIDTH REQUIREMENT. STRESSES ARE REVIEWED AT EACH HANDHOLE FOR STRUCTURAL ADEQUACY IN THE CALCULATIONS.

**2015 AASHTO NOTES**

RAMP METER POLE ALTERNATE POLE HEIGHT	
BASE MOUNTING DESCRIPTION	POLE HEIGHT
4 BOLT FIXED BASE ON BARRIER	7'-8"
4 BOLT FIXED BASE BEHIND BARRIER	6'-8"
3 BOLT BASE ON BRIDGE ELBOW	7'-8"
6.50" BASE DIAMETER KEPT - TOP DIAMETER ADJUSTED	

APPROVED

Manufacturer's Pole Plan  
 Approved For Listing As A  
 Pre-Approved Drawing  
 WSDOT Bridge & Structures Office  
 By GB Date 10-22-2018



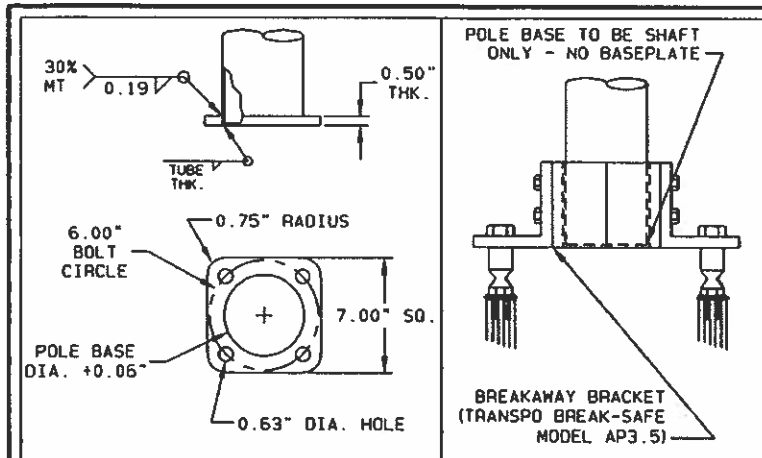
REV	DATE	BY	CHECK BY	DESCRIPTION
B	GC7 10/01/18	RBC2 10/03/18		WELD INSPECTION, WELDING & 2015 AASHTO NOTE
A	BDB3 02/07/17	BDB3 05/12/17		REVISED WELD INSPECTION NOTE
	BDB3 08/18/16	BDB3 08/29/16		

STATE OF WASHINGTON  
 PED POLES  
 2015 AASHTO

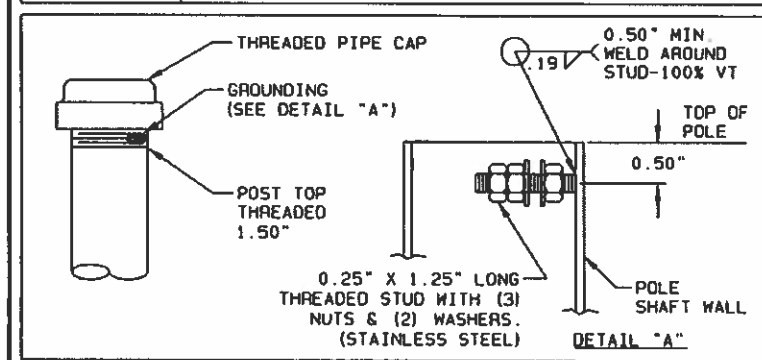
VALMONT INDUSTRIES, INC. RESERVES THE RIGHT TO INSTALL VARIOUS, ENGINEER APPROVED, MATERIAL HANGING ACCOMMODATIONS TO FACILITATE THE MANUFACTURING PROCESS.



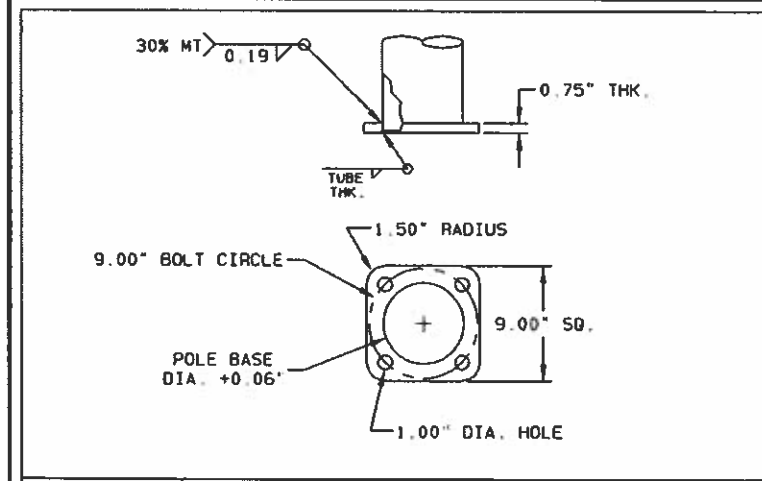
PAGE NUMBER: 1 OF 4	REV
DRAWING NUMBER	REV
DB01165	B



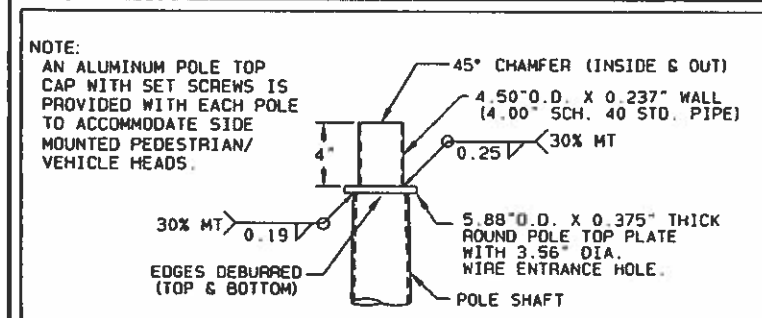
DETAIL 1 POLE BASE - PPB POST



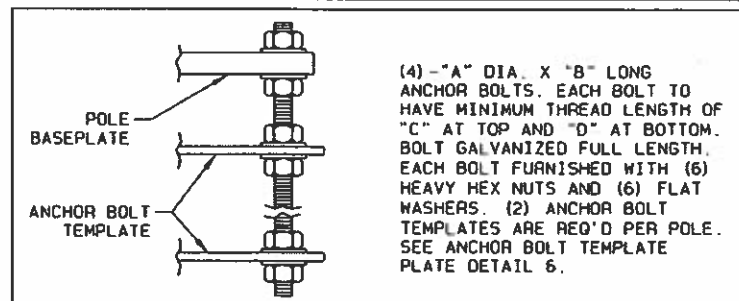
DETAIL 2 POLE TOP - PPB POST



DETAIL 3 POLE BASE - TYPE PS, TYPE I, FLASHING BEACON, & RAMP METER POLES



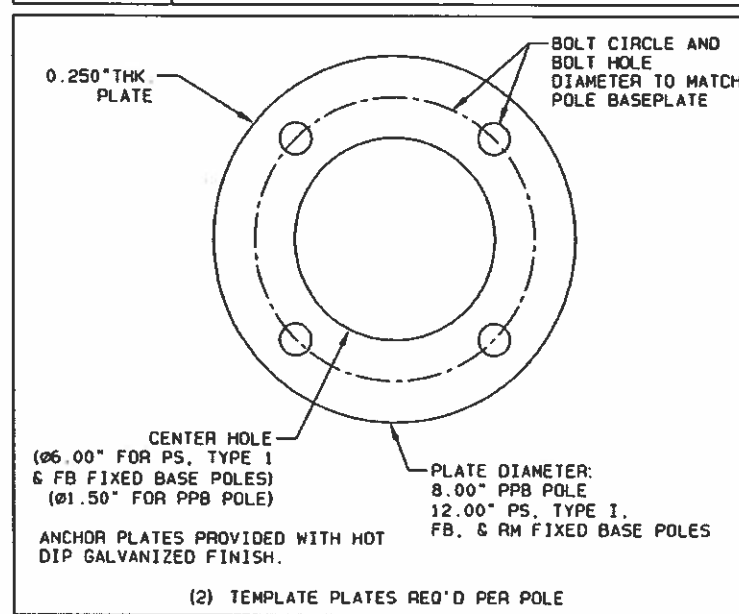
DETAIL 4 POLE TOP - TYPE PS, TYPE I, RAMP METER, & FLASHING BEACON POLES



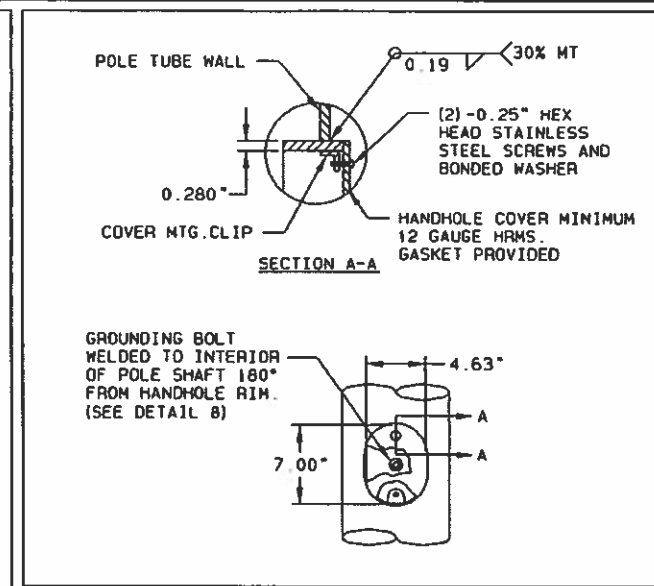
ANCHOR BOLT SCHEDULE

POLE TYPE	DIAMETER "A" (IN)	LENGTH "B" (IN)	THREAD LENGTH "C" (IN)	THREAD LENGTH "D" (IN)
PPB - STD.	0.50	18.00	ALL THREAD	
PPB - CURB	0.50	24.00	ALL THREAD	
TYPE PS, TYPE I, FB, & RM FIXED BASE	0.75	30.00	ALL THREAD	
TYPE RM BARRIER BASE	0.75	30.00	ALL THREAD	
TYPE PS, TYPE I, FB, & RM CURB BASE	0.75	36.00	ALL THREAD	

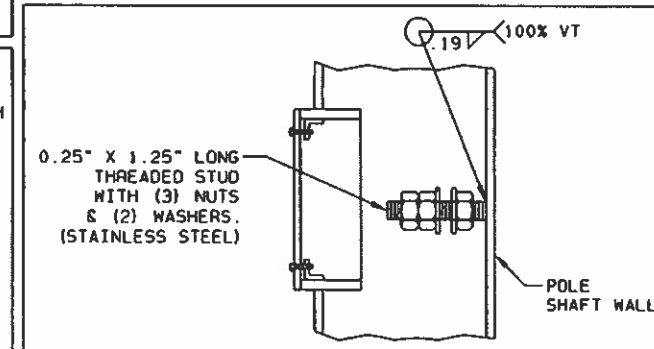
DETAIL 5 FIXED BASE ANCHOR BOLT



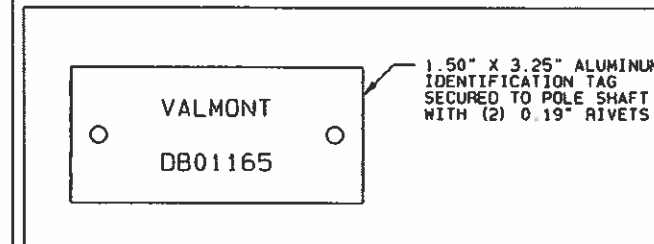
DETAIL 6 FIXED BASE ANCHOR BOLT TEMPLATE



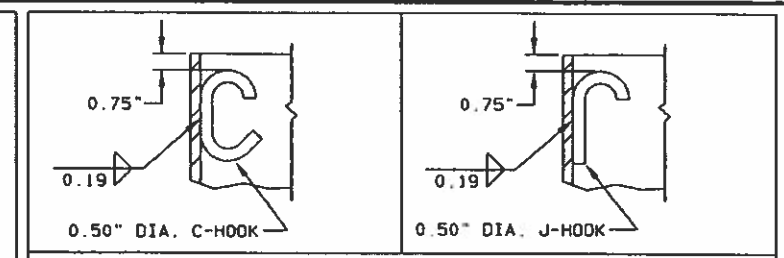
DETAIL 7 HANDHOLE



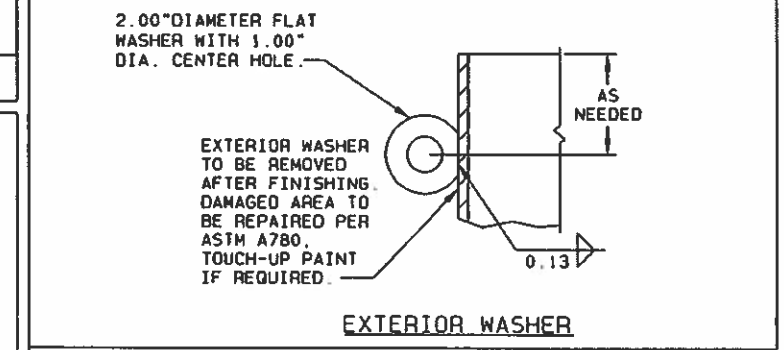
DETAIL 8 GROUNDING



DETAIL 9 I.D. TAG



DETAIL 10 LUGS



DETAIL 11 EXTERIOR WASHER

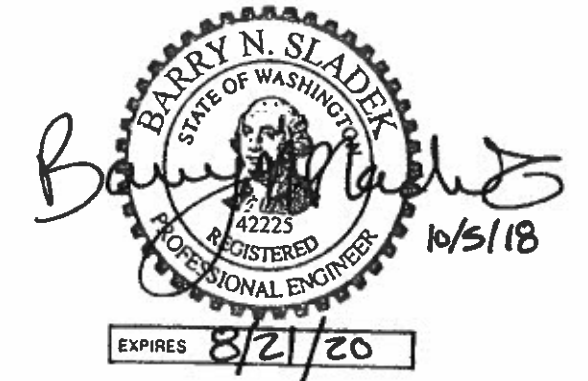
POLE - 1,000 LBS. OR LESS - (1) C-HOOK OR J-HOOK  
 1,001 LBS. THRU 2,000 LBS. - (2) C-HOOKS OR J-HOOKS  
 OVER 2,000 LBS. - (1) LUG  
 (AN EXTERIOR WASHER MAY REPLACE C-HOOK OR J-HOOK AT MANUFACTURER DISCRETION)

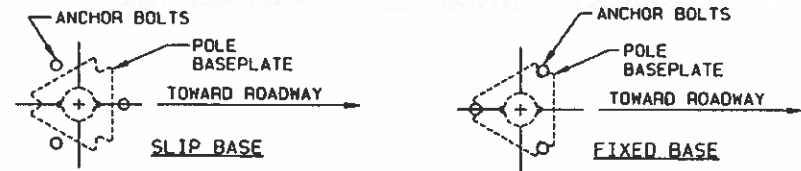
MATERIAL NOTE:  
 J-HOOK OR C-HOOK = HOT ROLLED MILD STEEL  
 LUG = ASTM: A36, 36 KSI  
 OR  
 A572 GR. 50 OR 55, 50 KSI MIN.

STANDARD MATERIAL HANGING ACCOMMODATIONS TO FACILITATE MANUFACTURING PROCESS

NOTE  
 1. RAMP METER POLE MOUNTED ON BARRIER BASE TO HAVE THE SAME BASEPLATE, ANCHOR BOLTS & ANCHOR PLATE AS SHOWN IN DETAILS #3, 5 & 6.

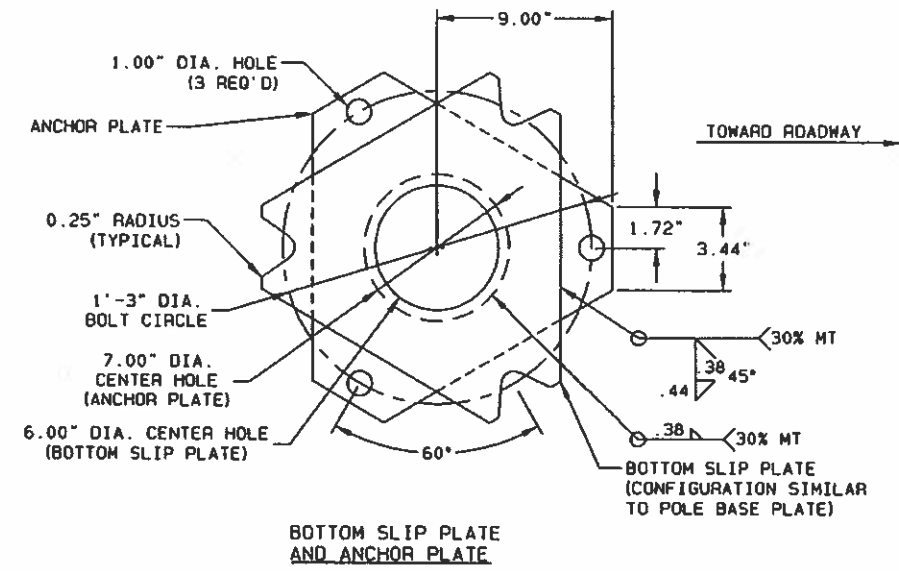
**APPROVED**  
 Manufacturer's Pole Plan  
 Approved For Listing As A  
 Pre-Approved Drawing  
 WSDOT Bridge & Structures Office  
 By GB Date 10-22-2018



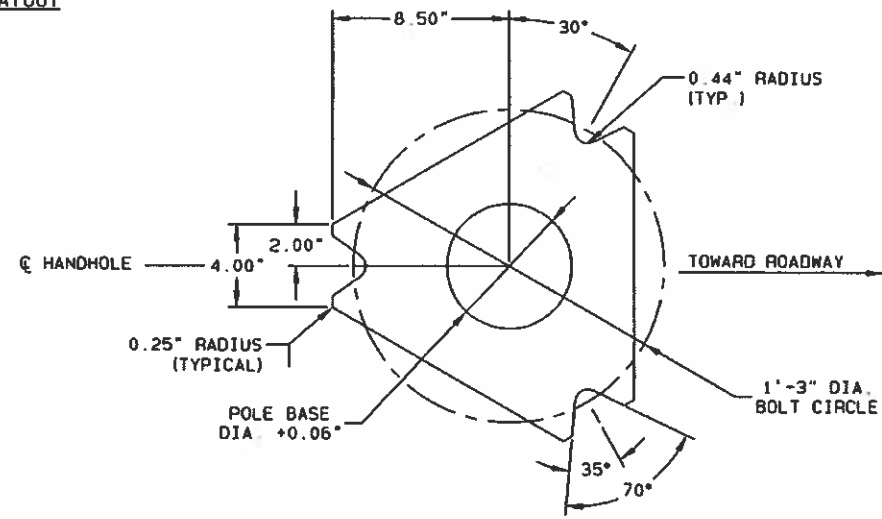


ANCHOR BOLT LAYOUT

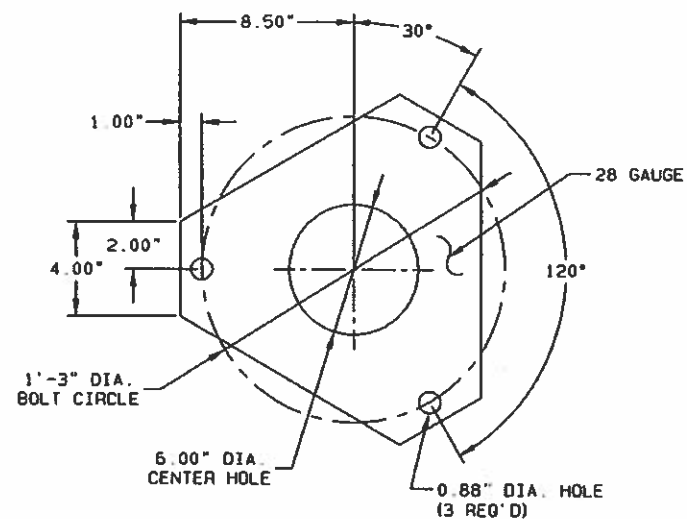
NOTE:  
1. BASEPLATE WITHOUT THE BOTTOM SLIP PLATE AND ANCHOR PLATE IS A FIXED BASE. WHERE A FIXED BASE IS REQUIRED BY PLANS OR SPECIAL PROVISIONS, ROTATE THE ANCHOR BOLT PATTERN 180° AND BOLT THE BASEPLATE DIRECTLY TO THE FOUNDATION.



BOTTOM SLIP PLATE AND ANCHOR PLATE

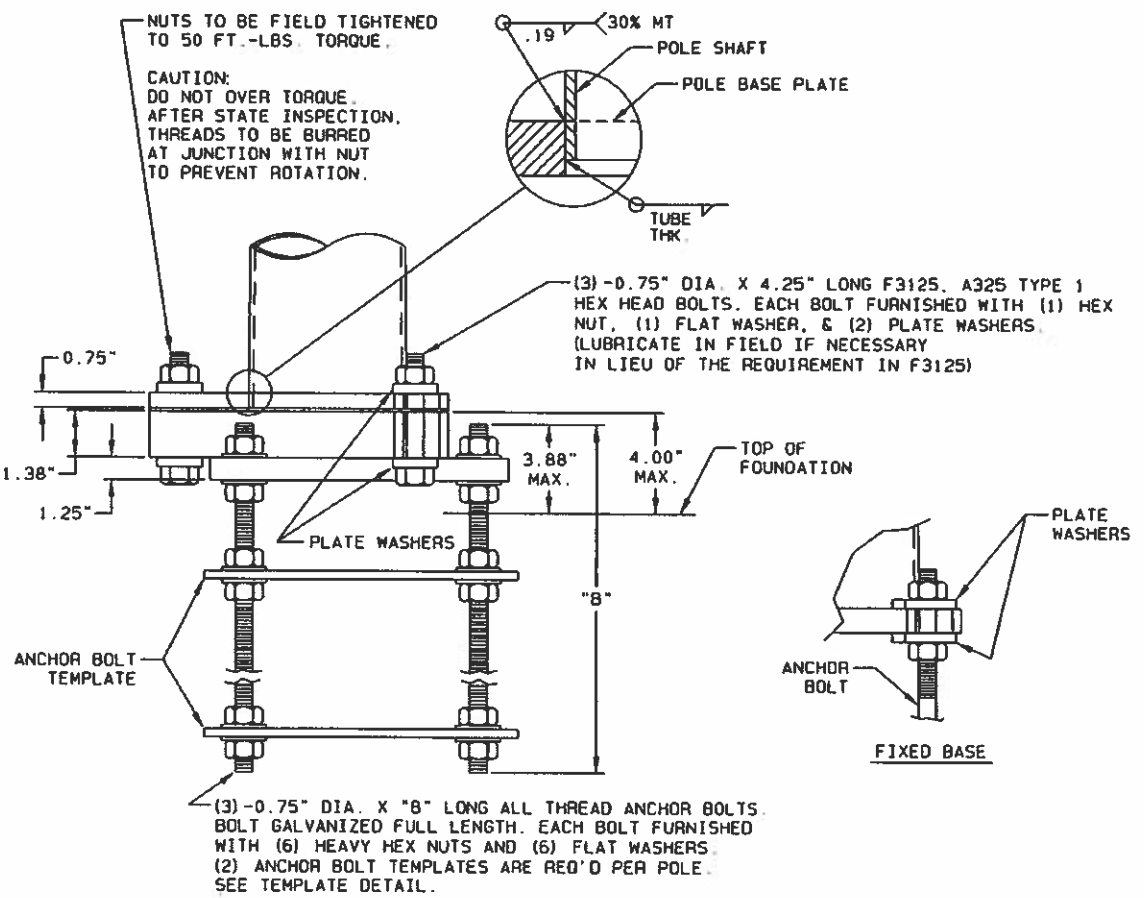


POLE BASE PLATE



KEEPER PLATE

PLACE BETWEEN POLE BASE PLATE AND BOTTOM SLIP PLATE ON TOP OF MIDDLE WASHERS.



BREAKAWAY BASE ELEVATION

BREAKAWAY BASE DETAIL

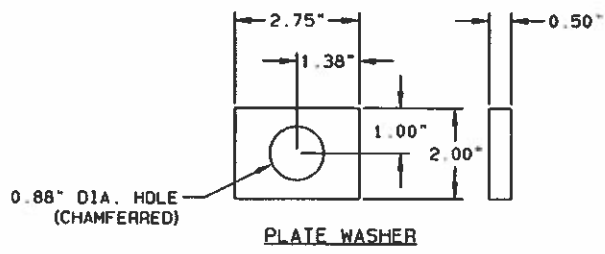
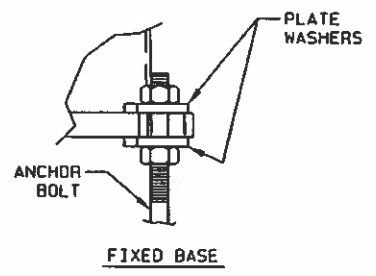


PLATE WASHER

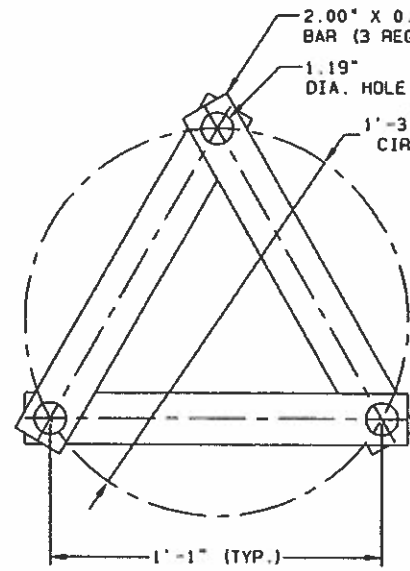
ANCHOR BOLT LENGTH	
FOUNDATION TYPE	BOLT LENGTH "B" (IN)
STANDARD	30.00
* CURB	36.00

\* CURB FOUNDATION DESIGN SHALL MEET AASHTO AND FHWA REQUIREMENTS FOR BREAKAWAY BASES.

NOTE:  
THE SLIPBASE ASSEMBLY SHOWN CONFORMS TO THE FHWA CERTIFIED ASSEMBLY THAT WAS TESTED TO THE NCHRP 350 CRITERIA.



FIXED BASE

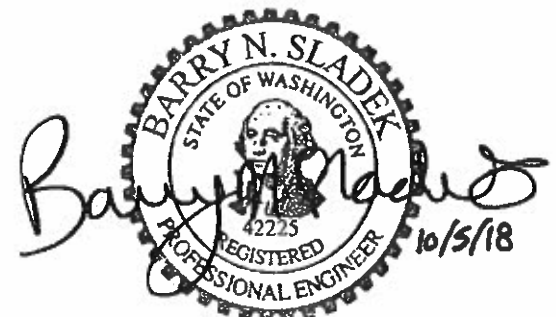


ANCHOR BOLT TEMPLATE

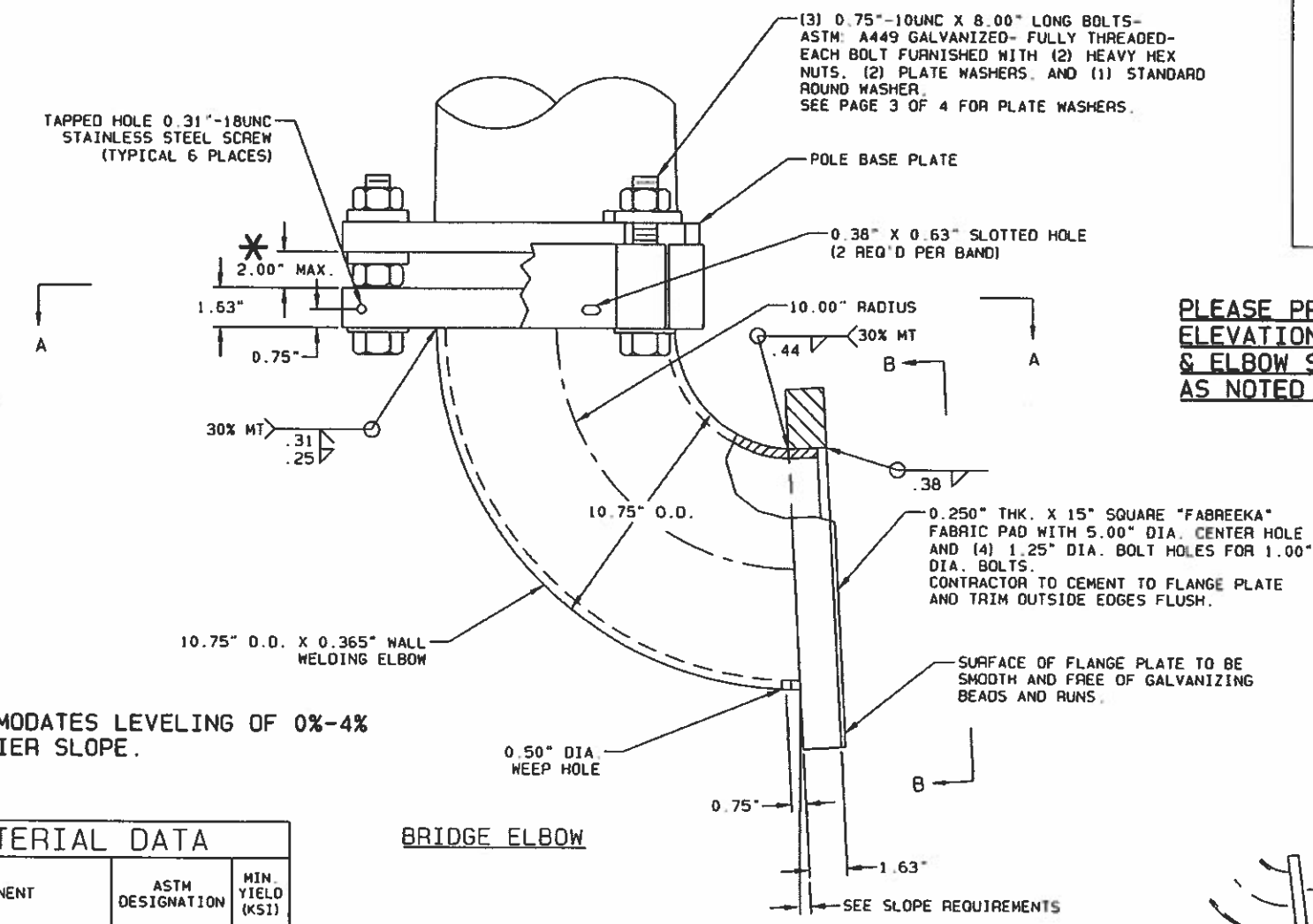
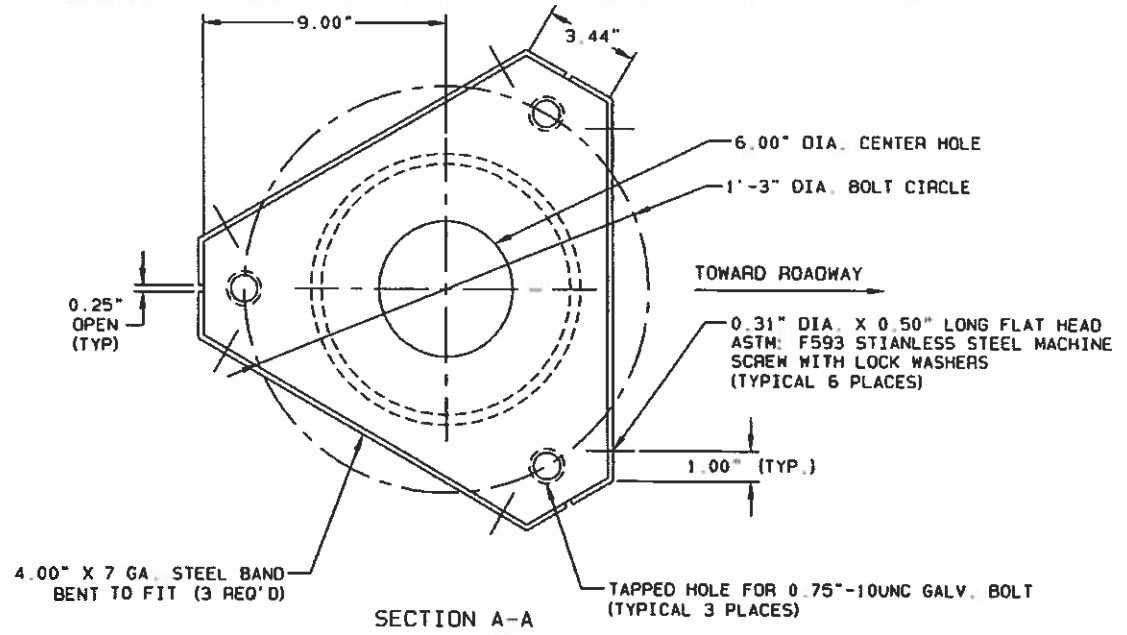
(2) TEMPLATES REQ'D PER POLE-STRAPS ARE SHIPPED LOOSE

ANCHOR PLATES PROVIDED WITH HOT DIP GALVANIZED FINISH.

**APPROVED**  
Manufacturer's Pole Plan  
Approved For Listing As A  
Pre-Approved Drawing  
WSDOT Bridge & Structures Office  
By GB Date 10-22-2018



EXPIRES 8/21/20



\* ACCOMODATES LEVELING OF 0%-4% BARRIER SLOPE.

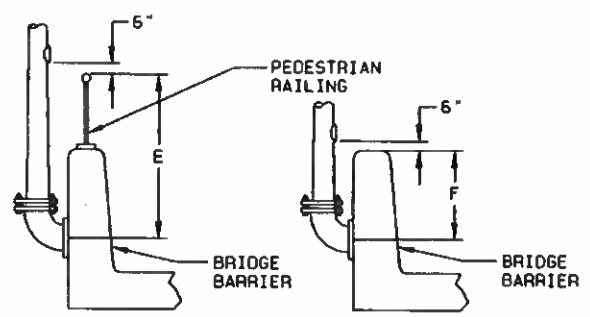
MATERIAL DATA		
COMPONENT	ASTM DESIGNATION	MIN. YIELD (KSI)
WELDING ELBOW	A234 GR. WPB	35
PLATES	A36 OR A572 GR. 50	36 / 50
STEEL BAND	HRMS	

SEE PAGE 1 OF 4 FOR ADDITIONAL MATERIAL DATA.

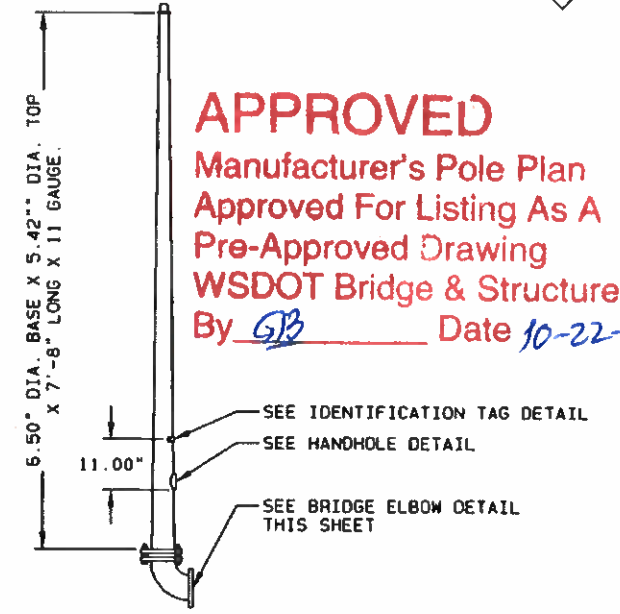
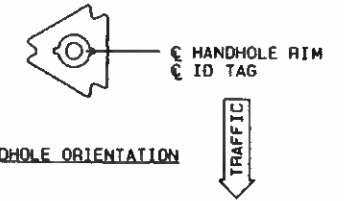
BRIDGE ELBOW

SEE PAGES 1, 2 & 3 FOR DATA AND DETAILS NOT ON THIS SHEET

BRIDGE ELBOW MOUNTED RAMP METER POLES



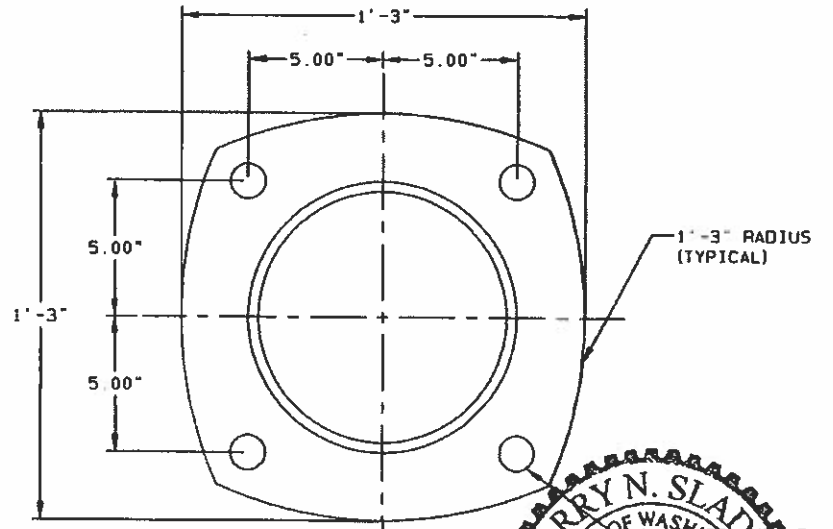
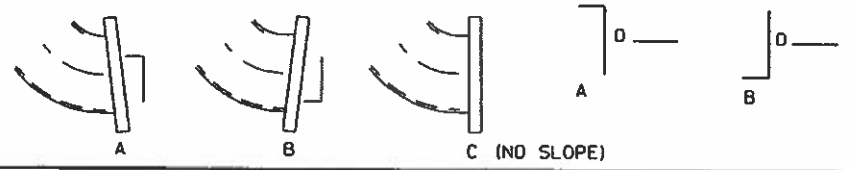
HANDHOLE ELEVATIONS PLEASE PROVIDE AS REQUIRED:  
E \_\_\_\_\_  
F \_\_\_\_\_



**APPROVED**  
Manufacturer's Pole Plan  
Approved For Listing As A  
Pre-Approved Drawing  
WSDOT Bridge & Structures Office  
By GB Date 10-22-2018

PLEASE PROVIDE HANDHOLE ELEVATIONS AS NOTED ABOVE & ELBOW SLOPE REQUIREMENTS AS NOTED BELOW

SLOPE REQUIREMENTS  
PLEASE PROVIDE DATA AS REQUIRED:  
1. DIRECTION OF SLOPE: A, B, OR C \_\_\_\_\_  
2. DEGREE (RATIO) OF SLOPE: D \_\_\_\_\_



EXPIRES 8/21/20

TITLE STATE OF WASHINGTON  
PED POLES  
2015 AASHTO

VALMONT INDUSTRIES, INC. RESERVES THE RIGHT TO INSTALL VARIOUS ENGINEER APPROVED MATERIAL HANGING ACCOMMODATIONS TO FACILITATE THE MANUFACTURING PROCESS.  
Valmont Valley, NE 68064 (402) 359-2201

DRAWING NUMBER DB01165

PAGE NUMBER: 4 OF 4  
REV