

SR 302 Corridor Study

Elgin-Clifton Rd to SR 16

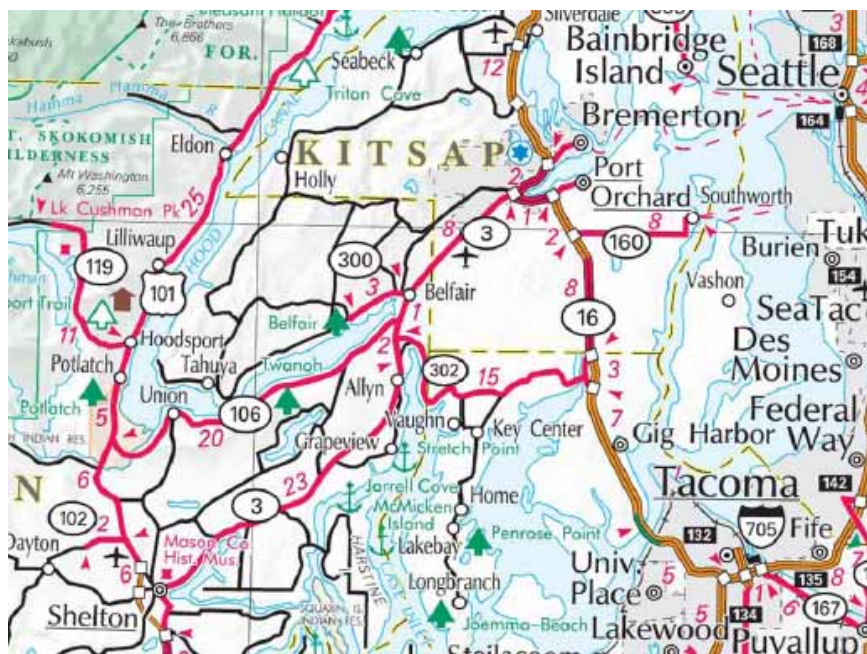
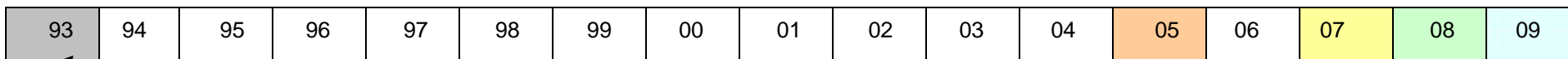
Progress report
Fall/Winter 2009

Paula Hammond
Secretary of Transportation

Kevin Dayton
Olympic Region Administrator

John Donahue
Yvette Liufau
Olympic Region Planning Office

SR 302 Corridor Study Background



SR 302 serves as a regional connector and an important local route for residents and commuters

1993
A study recommends “corridor adoption/EIS” study of selected alternatives.

2005
Legislature funds EIS of new route from Lake Kathryn vicinity to SR 16 via Burley.

2007
WSDOT initiates study to establish study limits and the broad range of alternatives.

2008
Legislature cuts funding from \$5m to \$2.5m. Alternatives analysis continues.

2009
NEPA scoping underway/ environmental studies to commence.

Purpose and Need

- To design improvements that will increase the level of safety for all travelers who use the route.
- To meet or exceed the standards for intersection and highway level of service during the average weekday peak hour.
- To improve the average weekday peak hour travel time for those who use the route.
- To consider the accommodation of non-motorized modes based on WSDOT policies.



Purdy Bridge

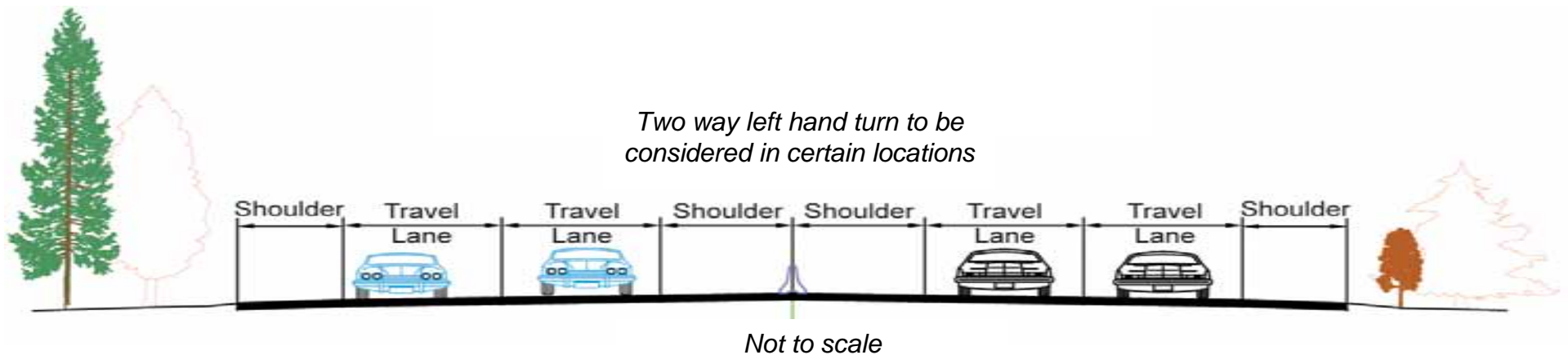


SR 302 / SR 16 NB offramp at Purdy

Alternatives Development

Design Criteria

Characteristics	Level of Service	Criteria Selection	Design Proposal
<i>Non-NHS Route</i> <i>Managed access facility Class 3</i> <i>Speed Limit 40-50mph</i> <i>Functional Class Urban Principal Arterial</i>	<i>LOS D threshold based on PSRC urban</i> <i>2007: 1300-2100 vph (LOS E no action)</i> <i>2035: 1500-2500 vph (LOS E-F no action)</i>	<i>Mobility Solution – Full Design Level</i> <i>Census 2000 Federal Urban Area</i> <i>Consistent corridor design level desirable</i>	<i>Urban Managed Access 4-lane facility</i> <i>50 mph consistent speed limit</i> <i>Consider transition to Partial Access Control</i>



Agency Coordination

Project Coordination Plan

Lead Agencies

- FHWA and WSDOT

Cooperating Agencies

- Department of Arch and Historic Preservation
- Pierce and Kitsap Counties
- USCOE

Participating Agencies

- Fish & Wildlife
- WDFW, Key Pen Parks, Pierce County Parks
- City of Gig Harbor
- *Nisqually, Puyallup, Skokomish, Squaxin – in process (Jamestown, Lower Elwha will defer)*
- US EPA
- Ecology
- *DNR – in process*

Cooperating Agencies . . .

. . . (have) jurisdiction by law or special expertise with respect to any environmental impact involved in a proposed project or project alternative.

Cooperating Agencies . . .

. . . have a higher degree of authority, responsibility, and involvement in the environmental review process.

Cooperating Agencies . . .

. . . assume on request of the lead agency responsibility for developing information and preparing environmental analyses including portions of the environmental impact statement.

Participating Agencies . . .

. . . participate at the earliest possible time, identify issues of concern, provide timely input, and participate in scoping

Public Involvement - Alternatives Development / Scoping

Date	Activity	Meeting Purpose
August – November, 2007	Conducted 31 stakeholder interviews and briefings	To understand issues and concerns about the route
July 12-15, 2007	Key Peninsula Community Fair	To understand issues and concerns about the route
September 25, 2007	Public meeting	Share information/community concerns. Develop/verify a broad range of alternatives
December 4 and 6, 2007	Public meeting	Feedback on alternatives, purpose and need and environmental information
October 20, 2008 (Level 1) / December 9, 2008 (Level 2)	Advisory Committee Meeting (Level 1 & Level 2 screening criteria)	To provide weighting for criteria as part of analysis
October 27 and 29, 2008	Public Meeting	Review results from Level 1 screening/provide input/confirm Level 1 decision
November 13, 2008	Briefing to Purdy business and property owners	Provide information about the study and feedback on alternatives
December 9, 2008	Public meeting	To provide information on study goals and alternatives, and learn community concerns
January 12, 2009	NEPA scoping meetings	To identify issues for study
May 1, 2009	NEPA scoping report	Document comments/issues
September 10, 2009	Briefing to Burley Community Club	To give an update of study progress/upcoming work
October 22, 2009	Briefing Rep Seaquist	To give an update of study progress/upcoming work
November 18, 2009	Kiwanis Club	To give an update of study progress and upcoming work
December 18, 2009	Peninsula Gateway News	To give an update of study progress and upcoming work

Range of Alternatives

Location and Description

Alt 4 (Bridge)

Direct route across Burley Lagoon

Alt 10 (Bridge)

Shortest span across Burley Lagoon*

Alt 6 (Land)

New route through Burley

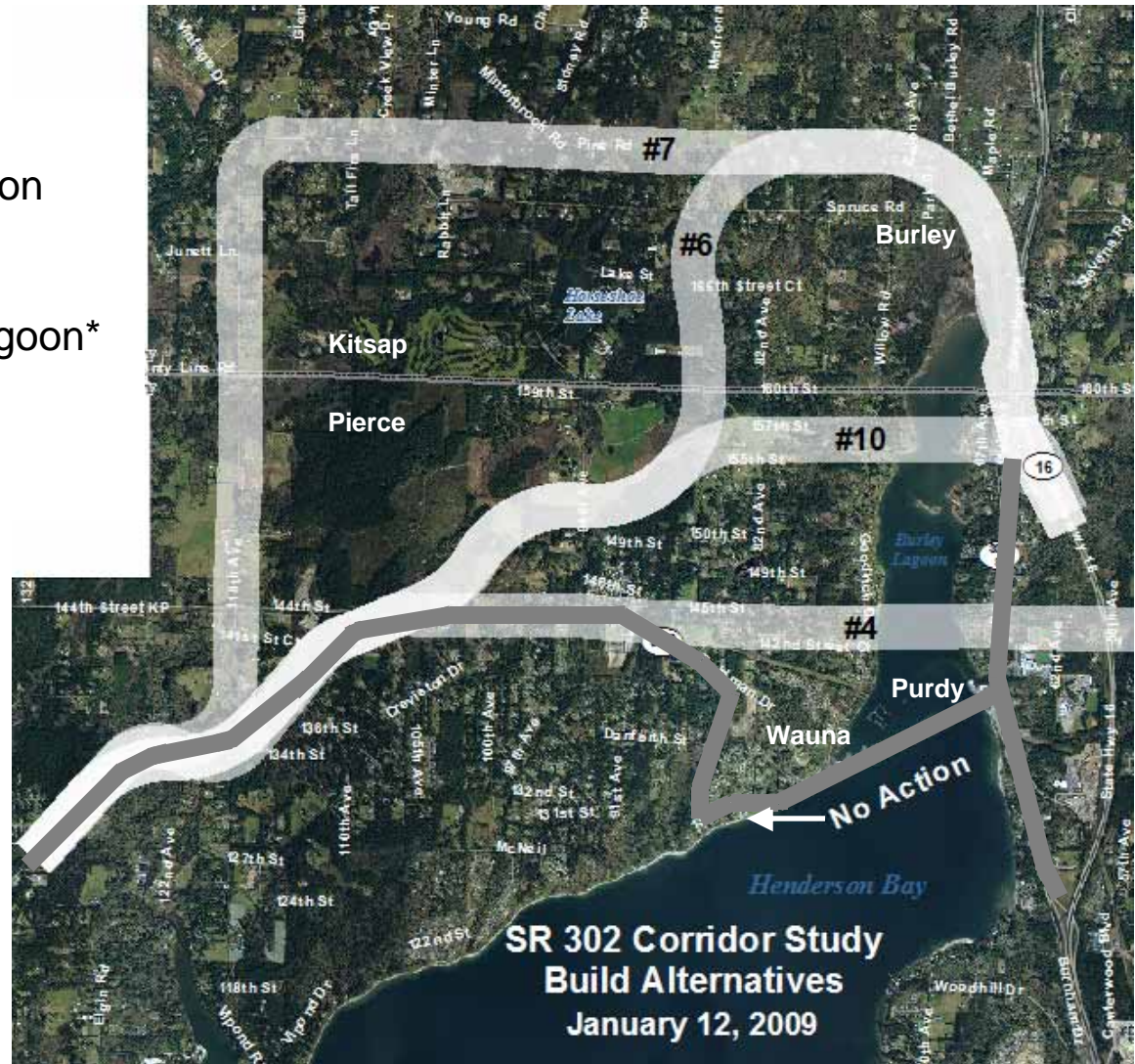
Alt 7 (Land)

Existing county roads

No Action

Use existing route throughout

*Besides existing bridge

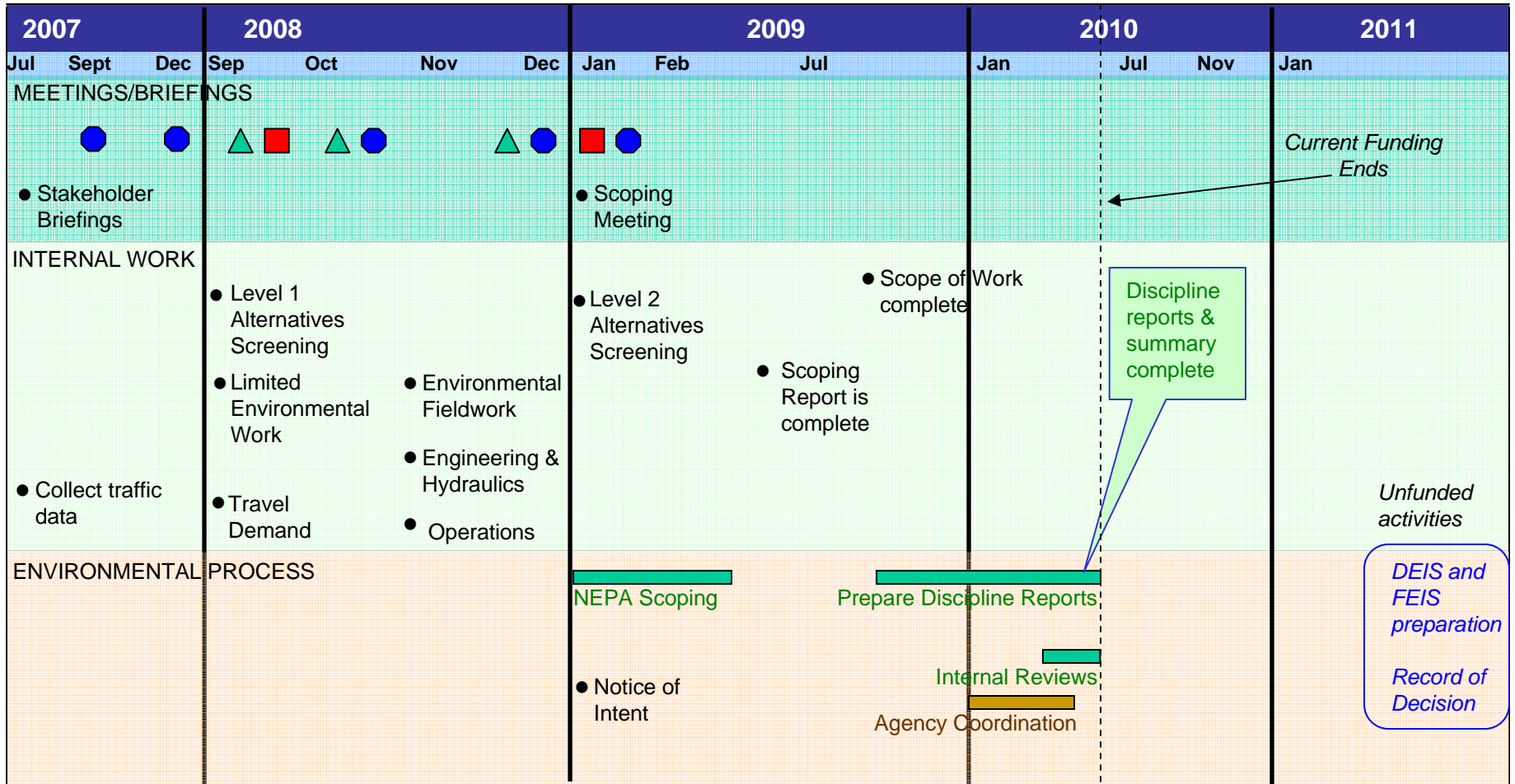


Existing conditions and potential impacts

- Resource agency consultations – review methods
- Land Use – document regulations, zoning, plans, farmland, recreation
- Social – communities, services, relocations, quality, env. justice
- Water resources – plans, stormwater, drinking, quality, floodplains
- Wetlands – identification, type, quality, habitat
- Fish – regulations, habitat, timing, ESA
- Wildlife and vegetation – regulations, habitat, timing, ESA
- Hazardous materials – historical survey, database search, recon.
- Section 4(f) – regulations, historic sites, recreation areas
- Transportation – current, forecast, transit, non-motorized, other
- Cultural Resources – tribal consultation, affected environment

SR 302 Corridor Study Schedule* – December 2009

▲ Advisory Committee
■ Alternatives Screening
● Public Meeting



SR 302 Corridor Study – Next Steps

Review scoping comments
(Completed)

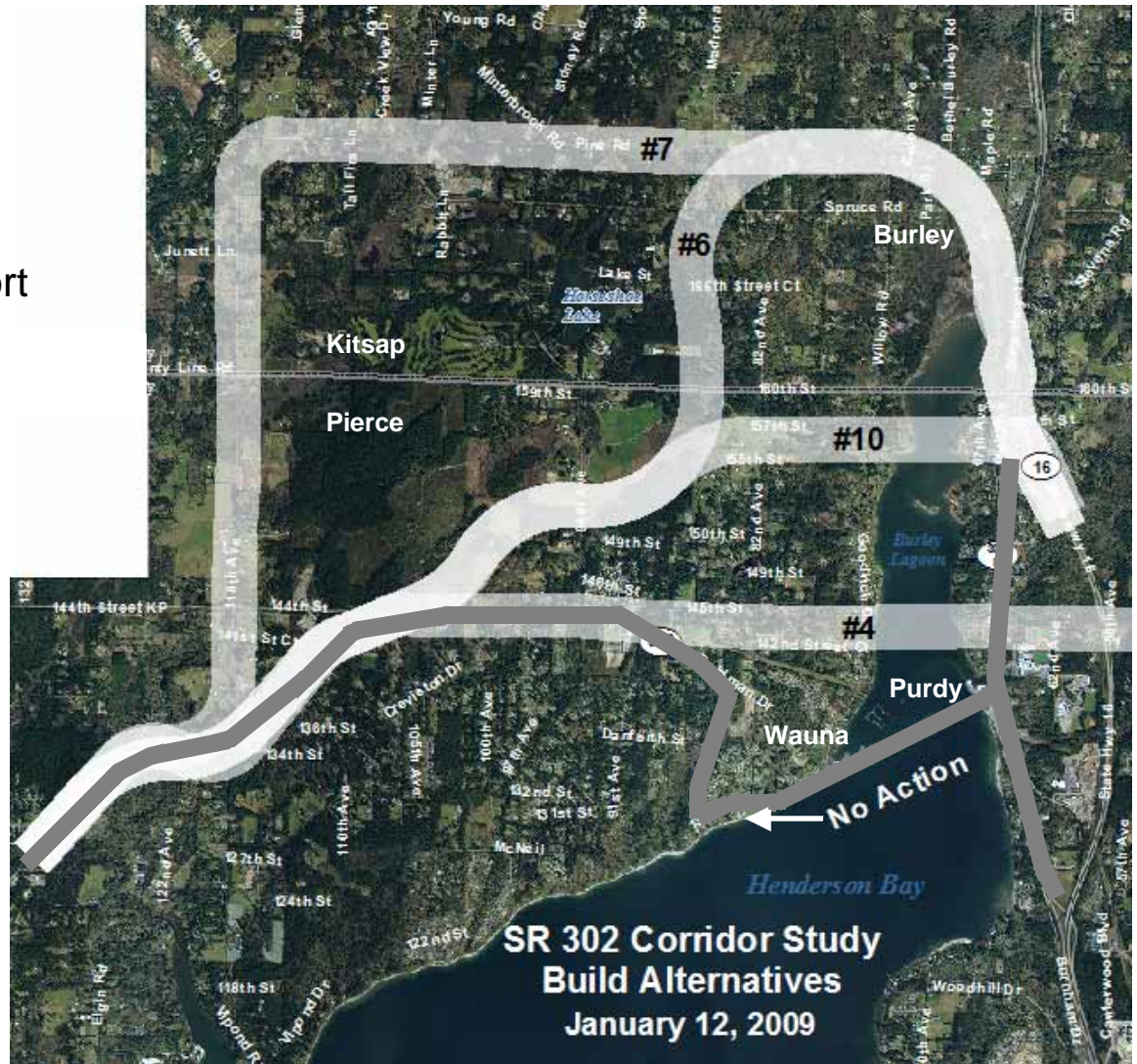
Publish Summary Scoping Report
(Completed)

Discipline studies and reports
(Sept 2009 – Jun 2010 est)

Discipline studies summary doc
(Jun 2010 est)

Complete NEPA process
(Unfunded)

*Besides existing bridge



Public Involvement Outreach strategies

Open Houses Advertising/mailing/ posters

Purdy - 09/27/07
 Purdy – 12/04/07
 Vaughn – 12/06/07
 Lakebay – 10/27/08
 Burley – 10/29/08
 Burley – 12/09/08*
 Vaughn – 01/12/09

Advisory Committee email only

Gig Harbor – 09/10/08
 Horseshoe Lk – 10/20/08
 Burley – 12/09/08

Other strategies

Poster advertisements
 Committee emails
 Stakeholder presentations
 Group Briefings

*Newspaper ads only

Newspaper Advertising

Belfair Herald - 11/29/07
 Gateway Values - 9/24/07, 1/5/09
 Key Peninsula News - 9/07, 12/07, 1/09
 Kitsap Sun - 9/23/07, 11/2/07, 1/4/09, 10/26/08, 12/7/08
 North Bay Review - 9/09, 11/09
 North Mason Life Magazine - 9/19/07
 Peninsula Gateway - 9/19/07, 11/28/07, 10/22/08, 12/3/08, 1/7/09
 Tacoma News Tribune - 1/4/09

Stakeholder Interviews – July-Nov 2007

Allyn Comm. Assoc.
 Port of Allyn
 Alta/Cedarbrook Rd Assoc
 Belwood Homeowners Assoc.
 Burley Community Club
 Burley Library Assoc.
 Fire District 16
 City of Gig Harbor
 Gig Harbor–Penin. Chamber
 Holiday Lake Homeowners
 Key Pen. Business Assoc.
 Key Pen. Comm. Ctr Seniors
 Key Pen. Comm. Council
 Key Pen. Comm. Plan. Bd
 Key Peninsula Metro Parks
 Kitsap County Staff

Longbranch Improv. Club
 Mason County
 Minterbrook Oyster Co.
 Nisqually Tribe
 Peninsula Civic Assoc.
 Peninsula Light Co.
 Peninsula School Bd.
 Pierce County Staff
 Pierce County Sheriff
 Pierce Transit
 Puget Sound Energy
 Puyallup Tribe
 Squaxin Tribe
 Tacoma Power
 Two Waters Arts Council
 Victor Improvement Club

Direct Mailing

98367 Port Orchard carrier routes:
 R003, R010, R017, R024
 98359 Olalla carrier routes:
 R002, R003, and Boxes
 98322 Burley Boxes
 98349 Lakebay
 98351 Longbranch
 98394 Vaughn
 98329 Gig Harbor
 98332 Gig Harbor carrier routes:
 R009, R012, R018, R020, R023, R029, R030
 98335 Rosedale
 98395 Wauna

