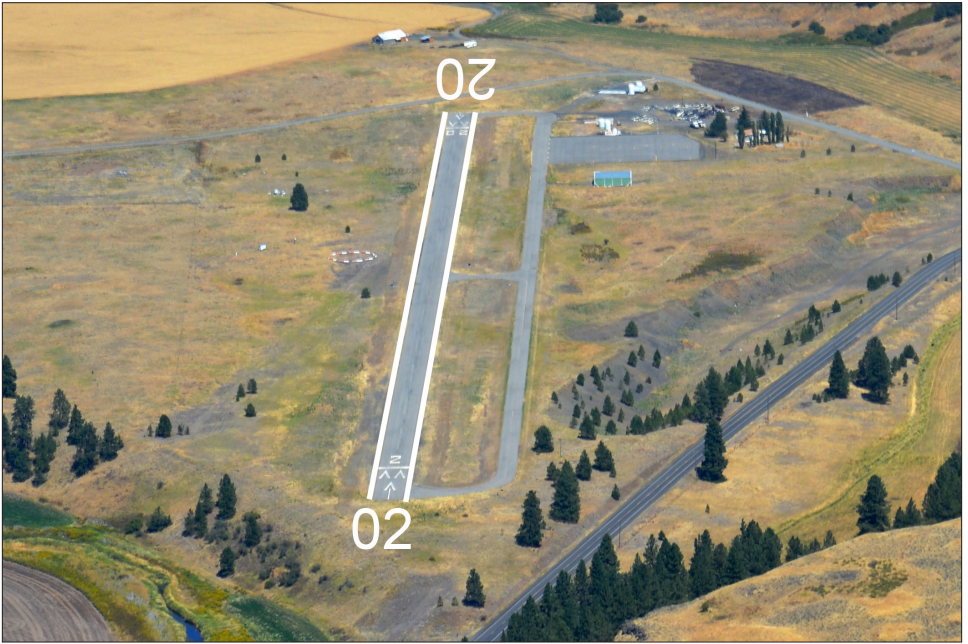


Rosalia / Rosalia Municipal / 72S

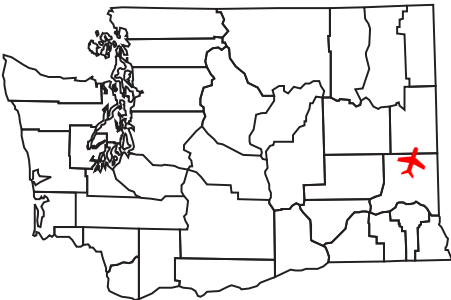


Communications

CTAF 122.9
PCL 122.9 (For MIRL)

Navigation

Elevation 2170' MSL
TPA 3170' MSL (1000' AGL)
Runway 02/20; 2807'x45'; ASPH
Lights Dusk-dawn, MIRL
Latitude N 47° 14.19'
Longitude W 117° 25.28'



Services

Fuel 100LL

Notes

Right hand traffic on Runway 20. Unattended. Rotating beacon OTS indef.