

Project Development Roles and Responsibilities for Projects With Structures

Chapter 700

- 700.01 General
- 700.02 Procedures

700.01 General

This chapter presents the project development process used by the Washington State Department of Transportation (WSDOT) in the regions and the Headquarters (HQ) Bridge and Structures Office to determine the roles and responsibilities for projects with structures during the project development phase of a project. This chapter complements WSDOT's *Project Management Online Guide*:

🔗 <http://www.wsdot.wa.gov/projects/projectmgmt/pmog.htm>

For design procedures, see Division 7 chapters and the *Bridge Design Manual*.

The primary objective of this process is to provide a consistent means of selecting a bridge design team to perform the structural design work, whether it is by a consultant or the HQ Bridge and Structures Office.

If the local agency will be requesting any services from WSDOT, the local agency will contact WSDOT's Local Programs Engineer, who will help define the level of WSDOT's involvement in design and construction.

700.02 Procedures

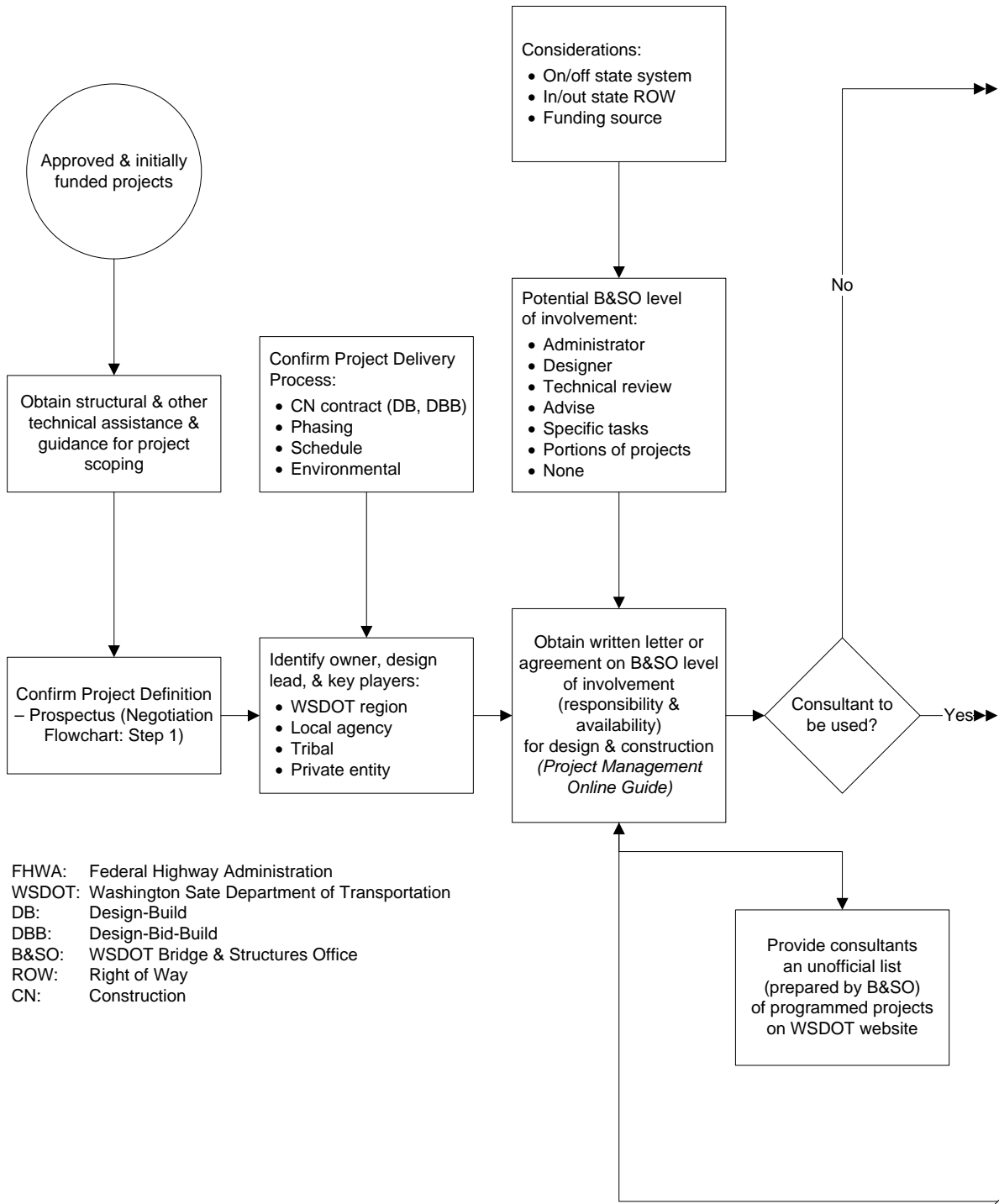
The flow diagram (see [Exhibit 700-1](#)) begins at the left with the initial approval and funding of the project and ends at the right with the start of the project delivery process.

After a project is programmed, WSDOT is tasked with confirming the project scope and defining the structural team's level of involvement in design and construction. If a consultant is not used, the bridge design work will be performed by the HQ Bridge and Structures Office. If a consultant is used, the region and the HQ Bridge and Structures Office will determine the level of involvement and responsibility for the design.

Agreements defining the level of involvement and responsibility will be developed and executed between the region office responsible for project development and the HQ Bridge and Structures Office, and the appropriate project delivery process will be implemented.

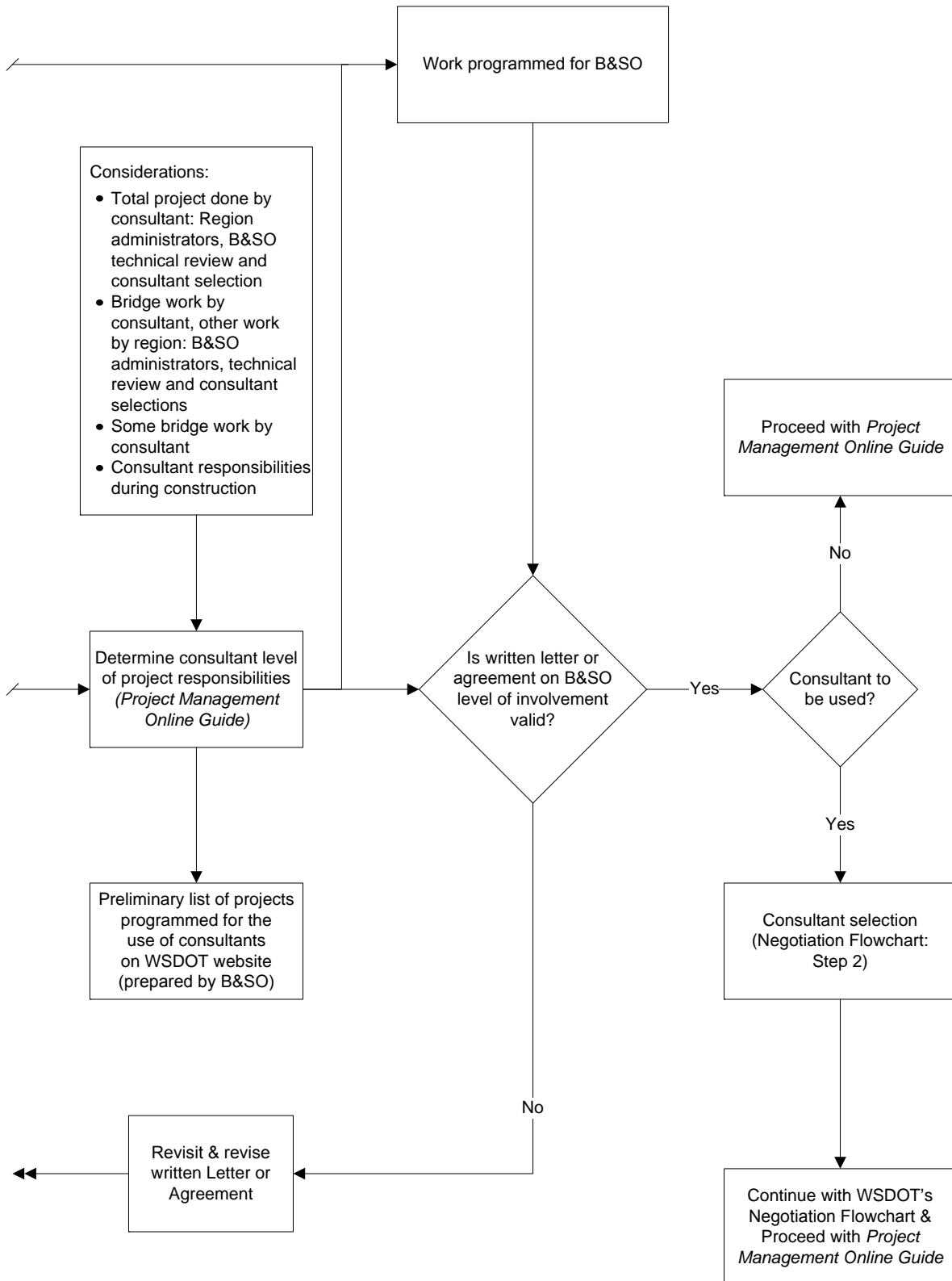
More information on this process and the desired outcomes is available on the HQ Bridge and Structures Office's home page:

🔗 <http://www.wsdot.wa.gov/bridge/structures>



FHWA: Federal Highway Administration
 WSDOT: Washington State Department of Transportation
 DB: Design-Build
 DBB: Design-Bid-Build
 B&SO: WSDOT Bridge & Structures Office
 ROW: Right of Way
 CN: Construction

Determination of the Roles and Responsibilities for Projects With Structures:
Project Development Phase
Exhibit 700-1



Determination of the Roles and Responsibilities for Projects With Structures:
Project Development Phase
 Exhibit 700-1 (continued)