

Construction Management Plan

Contract: 7967

Title: US395/NSC Freya St. to Farwell Rd. Southbound Additional Lanes

Project Engineer: Bob Hilmes, P.E.

Project Manager: Terrence Lynch, P.E.

Begin Construction Date: September 7, 2010



Project Description

This contract provides for the improvement of 3.63 miles of the future US 395 southbound lanes in Spokane County, MP 162.09 to MP 165.72, by performing clearing and grubbing, earthwork, drainage, surfacing, paving HMA and PCCP, constructing six pre-stressed concrete girder bridges, one Contractor designed bridge, geosynthetic retaining walls, illumination, four monotube sign bridges, one variable message sign, closed circuit TV, erosion control, and traffic control.

Team Mission/Assignment

The project team is responsible to support and perform contract administration, engineering, inspection, surveying, contract documentation, and materials testing to ensure that the contract work is completed in close conformance with the contract plans and specifications.

Team Identification - Roles & Responsibilities:

The project team consists of the construction team assigned to administer the contract, specialty or support groups, and other organizations or agencies are involved in the successful delivery of the construction program and this contract.

Project Engineer's Office (PEO) - Bob Hilmes (Project Engineer), Mark Allen (Asst. Project Engineer), Terrence Lynch (Project Manager), Chad Roberts (Project Inspector), Mike Meyers (Project Inspector), Mark Melnick (Project Inspector), and others as assigned.

- Responsible for enforcement of the contract specifications and provisions and completion of all work according to the plans – See Construction Manual Section 1-2.2.
- Responsible for the materials and record documentation, submittals, change order, and estimate processes. Provides field staff with project status (e.g. change orders, deferrals, submittals)

Region Construction – Mike Frucci, Acting ARA for Construction, Glenn Wagemann, Engineering Manager

- Provides support and assistance on construction administration and documentation issues.
- Executing authority of changes as provided in CM Section 1-2.4C(4).

Traffic – Harold White/Larry Frostad

- Provides assistance and support for work zone traffic control, permanent signing, and other traffic related issues. Performs on site work zone safety inspections on select projects.

Materials Lab – Kevin Littleton

- Responsible for items described in CM Section 9-5.5A(6). Provides assistance and support for all construction materials related items, geotechnical, and materials sources. Approves/provides changes to pavement design.

Environmental Manager – Tammie Williams

- Provides assistance and support for all environmental related issues, hydraulics approvals, wetlands, erosion control, sediment control, and hazardous materials and/or waste.

Utilities Engineer – Brian Marquette

- Provides assistance and support for utility relocation and is region liason for contact with local utilities, railroads, etc.

HQ Bridge/Structures – John Olk/Mark Szewcik

- Provide materials and construction related reviews for bridge and/or structural items. Provide approvals for shop drawings and general guidance regarding structural items when requested by PEO.

HQ Construction Support – Mark Gaines (Bridge), Dave Jones (Roadway)

- Provide general guidance regarding structural and roadway items when requested by PEO, including approvals for changes to the contract.

Signal Shop – Ken Heale

- Provide guidance regarding electrical item inspection. Review electrical/ITS/signal submittals and give approvals when necessary. Respond to inspector questions regarding materials, inspection requirements, workmanship, etc. during contractor work operations. Responsible to acceptance of electrical items upon completion of project.

Public Information Officer – Al Gilson

- Maintains the weekly construction update and other project information on the website. Releases project information via press releases, flyers, etc. to the local media, emergency services, businesses, and residents. Provides public outreach support.

Major Milestones

The following [Construction Milestones](#) are critical to complete the contract as planned:

- Contract AD date –
- Bid Opening Date – 7/8/2010
- Contract Award Date – 8/17/2010
- Contract Execution Date – 9/8/2010
- Construction Start Date – 9/8/2010
- Operationally Complete – Winter 2011
- Final Contract Completion – Spring 2012

Success

This project will be a success if the team accomplishes the following:

<u>Goals for Success</u>	<u>Strategies & Measures of Success</u>
<ul style="list-style-type: none"> ▪ Maintain open, effective, and timely communication with the team and interested parties, including the public and media. ▪ Maintain effective partnering with contractor. 	<ul style="list-style-type: none"> ▪ Document team meetings and decisions in a timely fashion and forward to appropriate staff. ▪ Conflict resolution process implemented in a timely manner and used effectively.
<ul style="list-style-type: none"> ▪ The work is in close conformance with the plans and specifications. 	<ul style="list-style-type: none"> ▪ Limited number of corrective or out of specification changes. ▪ High contractor performance scores. ▪ IDR's submitted daily with clear documentation of contractor's work activities, equipment, and conversations. ▪ Thorough review of materials submittals by PEO team. ▪ Materials approval documented prior to use.
<ul style="list-style-type: none"> ▪ Accomplish major milestones as planned and complete the project within the approved number of working days. 	<ul style="list-style-type: none"> ▪ Monitor contractor schedule and record milestone accomplishments. ▪ Maintain progress schedule updates. ▪ Monitor percent of work completed compared to scheduled work completed.
<ul style="list-style-type: none"> ▪ Process progress estimates and payments accurately and within the prompt pay requirements. 	<ul style="list-style-type: none"> ▪ Turn in Field-Note Records upon completion of work or immediately after estimate cutoff date. ▪ Thorough check of FNR's prior to submitting to Project Manager or Office Engineer. ▪ Office Engineer produces Pre-Estimate report for review as soon after estimate cutoff date as possible. ▪ Pre-estimate reviews completed in a timely fashion and deferrals documented. ▪ Payment made to contractor within allowable timeframe.
<ul style="list-style-type: none"> ▪ Take action on working drawing and other submittals in a timely manner. 	<ul style="list-style-type: none"> ▪ Submittal reviews completed in a timely fashion. ▪ Monitor average submittal review time from receipt to return.
<ul style="list-style-type: none"> ▪ Meet environmental stewardship responsibilities and environmental commitments. 	<ul style="list-style-type: none"> ▪ Monitor completion of TESC reviews and documentation submittals.

<u>Goals for Success</u>	<u>Strategies & Measures of Success</u>
<ul style="list-style-type: none"> ▪ Administer and manage contract changes in the best interest of the project and in accordance with the contract and established procedures. ▪ Process change orders in a timely manner. 	<ul style="list-style-type: none"> ▪ Review of all available options for determination of best cost/benefit. ▪ Appropriate approval authority obtained for all changes prior to work being performed. ▪ Monitor average time from CO identification to execution. ▪ Minimize time from CO identification to execution. ▪ Construction team assist OE with CO preparation.
<ul style="list-style-type: none"> ▪ Communicate work progress and work impacts. 	<ul style="list-style-type: none"> ▪ Submit weekly updates to the Public Information Office. ▪ Complete CSR's monthly.
<ul style="list-style-type: none"> ▪ Materials meet the contract requirements for quality. 	<ul style="list-style-type: none"> ▪ Thorough review of all materials submittals for compliance. ▪ Attempt to eliminate documented deficiencies.
<ul style="list-style-type: none"> ▪ Complete the work in a safe manner. 	<ul style="list-style-type: none"> ▪ Maintain and use Pre-Activity Safety Plans. ▪ Minimize internal OSHA reportable accidents. ▪ Notify contractor of unsafe practices/conditions.
<ul style="list-style-type: none"> ▪ Resolve disputes or outstanding issues and close the contract in a timely manner. 	<ul style="list-style-type: none"> ▪ Minimize the number of days to complete the Project Closure Process.
<ul style="list-style-type: none"> ▪ Monitor and maintain the budget. 	<ul style="list-style-type: none"> ▪ Track Cost to Complete using available tools. ▪ Identify potential change orders and risk items as early as possible and include in cost-to-complete estimates. ▪ Complete Construction Status Reports (CSR's) monthly.

Schedule and Budget

The schedule and budget plan for the contract is managed in two discrete forms – Plan, and Updated.

Plan

The Plan Schedule is the CPM schedule (Progress Schedule per Section 1-08.3) owned by the contractor showing the completion of the work within the allowed time, the planned order of work, and the projected start and completion of major phases of work (milestones).

Updated

The Updated Schedule communicates changes to the contractor's Plan Schedule resulting from faster or slower than projected progress and should be initiated by an updated Progress Schedule per Section 1-08.3. The Updated Budget communicates faster or slower than project expenditures that may or may not be related to schedule performance. The Updated Budget must also communicate actual or projected over/ under expenditures that will affect final project costs (cost to complete) that may be independent of the project schedule.

A copy of the contractor's preliminary plan schedule is included in this construction management plan. An approved copy will be on file in the PEO once the contractor's schedule is approved and accepted. Updates to the budget and cost to complete information are maintained in the PMRS Status Reports and the Data Mart software program. Monthly Construction Status Reports (CSR's) are filed in the contract records and are the primary reporting tool for scope, schedule, and budget. Weekly or bi-weekly activity schedules (task-specific) used to coordinate daily work activities are also filed in the contract records.

Work Order Lookup

007967: US 395/NSC-Freya to Farwell Rd - SB Additional Lanes

<u>Work Item</u>	<u>Phase Code</u>	<u>Responsible Person Name</u>	<u>Responsible Org</u>	<u>Total Plan</u>	<u>Unposted Actuals</u>
F00001T	CN	HILMES, B.L.	464310	\$35,827,079.00	\$0.00

<u>TRAINS Authorized</u>	<u>CPMS Authorized</u>	<u>Actuals</u>	<u>Overrun</u>	<u>CPMS Remaining Auth</u>	<u>Unauthorized</u>
\$27,569,313.48	\$27,569,313.00	\$90,257.96	\$0.00	\$27,479,055.04	\$8,257,766.00

Plan by color of money (similar to QP/QR/QC/HP/HR/HC screens in CPMS.)

<u>SP</u>	<u>PIN</u>	<u>Fin. Code</u>	<u>Fund Source</u>	<u>Authorized</u>	<u>Actual</u>	<u>Overrun</u>	<u>Remaining Auth</u>	<u>Unauthorized</u>
I1	600001A	AN	State	\$827,079.00	\$4.36	\$0.00	\$827,074.64	\$0.00
I1	600001A	FS	Federal	\$26,742,234.00	\$90,253.60	\$0.00	\$26,651,980.40	\$8,257,766.00

TRAINS Set-Up (similar to WACT screen)

<u>Group Category</u>	<u>Authorized Amount</u>	<u>Expended Amount</u>	<u>Balance</u>
01 - Contractor	23,322,569.50	0.00	23,322,569.50
02 - Payable Agreements	457,000.00	0.00	457,000.00
03 - Engineering	2,706,959.99	90,255.09	2,616,704.90
06 - Contingencies	1,082,783.99	0.00	1,082,783.99
Total	27,569,313.48	90,255.09	27,479,058.39

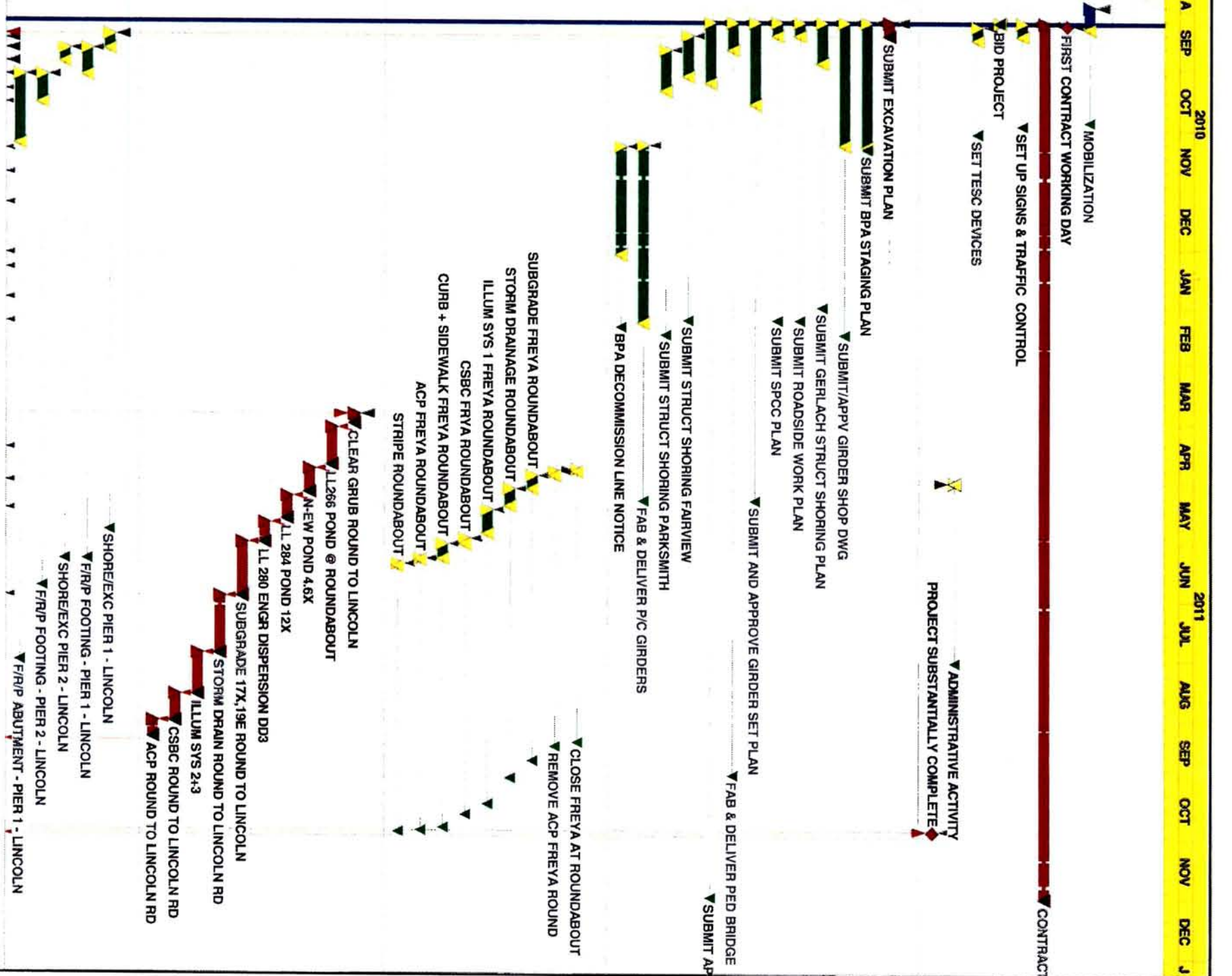
Activity ID	Activity Description	Orig Dur	Rem Dur	%	Early Start	Early Finish	Late Start	Late Finish	Predecessors	Successors	Total Float
NS 00010	AWARD CONTRACT	0	0	100	28JUL10A	28JUL10A	NS 00000	NS 00020, NS 00500*			0
NS 00020	EXECUTE CONTRACT	0	0	100	17AUG10A	17AUG10A	NS 00010	NS 00040*, NS 00510*			0
NS 00040	MOBILIZATION	3	3	0	30AUG10A	27OCT10	NS 00020*	NS 00050*			34
NS 00034	FIRST CONTRACT WORKING	0	0	100	08SEP10A	08SEP10A	NS 00020	NS 00050*, NS 00060,			0
NS 00035	CONTRACT TIME HAMMOCK	309*	309*	0	07SEP10	30NOV11	NS 00034	NS 2011			0
NS 00050	SET UP SIGNS & TRAFFIC	5	5	0	07SEP10	13SEP10	NS 00040*, NS 00034*	NS 00060*			34
NS 00000	BID PROJECT	0	0	100			NS 00010				0
NS 00060	SET TESC DEVICES	5	5	0	08SEP10	15SEP10	NS 00050*, NS 00034	NS 10000*, NS 70000,			34
NS 00070	ADMINISTRATIVE ACTIVITY	0	0	0	02MAY11	29APR11	NS 10130*, NS 20020,	NS 40080*, NS 50080,			64
NS 2011	PROJECT SUBSTANTIALLY	0	0	0	28OCT11	28OCT11	NS 15090, NS 50140,	NS 90030*			0

Activity ID	Activity Description	Orig Dur	Rem Dur	%	Early Start	Early Finish	Late Start	Late Finish	Predecessors	Successors	Total Float
NS 00502	SUBMIT EXCAVATION PLAN	5	5	0	07SEP10	13SEP10	NS 00010*	NS 15000, NS 20000, NS			0
NS 00505	SUBMIT BPA STAGING PLAN	46	46	0	07SEP10	08SEP10	NS 00020*	NS 20000, NS 00514*, NS			1
NS 00519	SUBMIT/APPV GIRDER SHOP	45	45	0	07SEP10	08NOV10	NS 00010*	NS 00520*			64
NS 00506	SUBMIT GERLACH STRUCT	15	15	0	07SEP10	27SEP10	NS 00034*	NS 70010*, NS 00507*			84
NS 00500	SUBMIT ROADSIDE WORK	5	5	0	07SEP10	13SEP10	NS 00010*	NS 10000, NS 70010			99
NS 00501	SUBMIT SPOC PLAN	5	5	0	07SEP10	13SEP10	NS 00010*	NS 10000, NS 70010			99
NS 00503	SUBMIT AND APPROVE	30	30	0	07SEP10	18OCT10	NS 00010*	NS 10100, NS 20060, NS			139
NS 00510	FAB & DELIVER PED BRIDGE	10	10	0	07SEP10	20SEP10	NS 00020*	NS 50130			258
NS 00504	SUBMIT APPRENTICE	23	23	0	07SEP10	07OCT10	NS 00020*				286
NS 00507	SUBMIT STRUCT SHORING	15	15	0	14SEP10	04OCT10	NS 00506*	NS 30030*, NS 00508*			84
NS 00508	SUBMIT STRUCT SHORING	15	15	0	21SEP10	11OCT10	NS 00507*	NS 10030*			84
NS 00520	FAB & DELIVER P/C GIRDERS	60	60	0	09NOV10	08FEB11	NS 00519*	NS 10100*			64
NS 00514	BPA DECOMMISSION LINE	35	35	0	10NOV10	04JAN11	NS 00505*	NS 70000*			26

Activity ID	Activity Description	Orig Dur	Rem Dur	%	Early Start	Early Finish	Late Start	Late Finish	Predecessors	Successors	Total Float
NS1390	CLOSE FREYA AT	1	1	0	25APR11	12SEP11	NS1360*	NS 1410*			97
NS 1410	REMOVE ACP FREYA ROUND	2	2	0	26APR11	13SEP11	NS1390*	NS 1460*			97
NS 1460	SUBGRADE FREYA	5	5	0	28APR11	04MAY11	NS 1410*	NS 1470*			97
NS 1470	STORM DRAINAGE	7	7	0	05MAY11	13MAY11	NS 1460*	NS 1472*			97
NS 1472	ILLUM SYS 1 FREYA	10	10	0	16MAY11	27MAY11	NS 1470*	NS 1480*			97
NS 1480	CSBC FRYA ROUNDABOUT	3	3	0	31MAY11	02JUN11	NS 1472*	NS 1482*			97
NS 1482	CURB + SIDEWALK FREYA	5	5	0	03JUN11	09JUN11	NS 1480*	NS 1484*			97
NS 1484	ACP FREYA ROUNDABOUT	1	1	0	10JUN11	10JUN11	NS 1482*	NS 1490*			97
NS 1490	STRIPE ROUNDABOUT	1	1	0	13JUN11	13JUN11	NS 1484*	NS 2011			97

Activity ID	Activity Description	Orig Dur	Rem Dur	%	Early Start	Early Finish	Late Start	Late Finish	Predecessors	Successors	Total Float
NS 1350	CLEAR GRUB ROUND TO	5	5	0	28MAR11	01APR11	NS 00060, NS 1107*	NS1360*			0
NS1360	LL266 POND @ ROUNDABOUT	15	15	0	04APR11	22APR11	NS 1350*	NS 1370*, NS1390*			0
NS 1370	NEW POND 4.6X	10	10	0	25APR11	06MAY11	NS1360*	NS 1380*			0
NS 1380	LL 284 POND 12X	10	10	0	09MAY11	20MAY11	NS 1370*	NS 1400*			0
NS 1400	LL 280 ENGR DISPERSION DD3	7	7	0	23MAY11	01JUN11	NS 1380*	NS 1430*			0
NS 1430	SUBGRADE 17X, 19E ROUND	20	20	0	02JUN11	29JUN11	NS 1400*	NS 90020*, NS1420*			0
NS1420	STORM DRAIN ROUND TO	20	20	0	30JUN11	28JUL11	NS 1430*	NS 1432*			0
NS 1432	ILLUM SYS 2+3	15	15	0	29JUL11	18AUG11	NS1420*	NS1440*			0
NS1440	CSBC ROUND TO LINCOLN RD	10	10	0	19AUG11	19AUG11	NS 1432*	NS 1450*			0
NS 1450	ACP ROUND TO LINCOLN RD	5	5	0	02SEP11	09SEP11	NS1440*	NS 1670*			0

Activity ID	Activity Description	Orig Dur	Rem Dur	%	Early Start	Early Finish	Late Start	Late Finish	Predecessors	Successors	Total Float
NS 50000	SHORE/EXC PIER 1 - LINCOLN	5	5	0	14SEP10	20SEP10	NS 00502*	NS 15000*, NS 50010*			171
NS 50010	F/R/P FOOTING - PIER 1 -	10	10	0	21SEP10	04OCT10	NS 50000*	NS 50020*, NS 50040*			171
NS 50030	SHORE/EXC PIER 2 - LINCOLN	5	5	0	21SEP10	27SEP10	NS 50000*	NS 50040			176
NS 50040	F/R/P FOOTING - PIER 2 -	10	10	0	05OCT10	18OCT10	NS 50010*, NS 50030	NS 50050*			171
NS 50020	F/R/P ABUTMENT - PIER 1 -	25	25	0	05OCT10	08NOV10	NS 50010*	NS 00070, NS 50060, NS			181



Start Date: 07SEP10, 30NOV11, 07SEP10, 13SEP10 16:14

Finish Date: 07SEP10, 07SEP10, 13SEP10 16:14

Run Date: 13SEP10 16:14

Legend: Early Bar (Green), Final Bar (Yellow), Progress Bar (Red), Critical Activity (Black)

SBBL

Graham Construction & Management Inc

NSC Freya to Farwell SB Add Lanes Re

Baseline Schedule Rev 1

Sheet 1 of 4

Date: 09SEP11

Revision: Rev 1 Added Call and Shore Submittals

Checked: Approved

© Primavera Systems, Inc.

Activity ID	Activity Description	Orig Dur	Rem Dur	%	Early Start	Early Finish	Late Start	Late Finish	Predecessors	Successors	Total Float
NS 50120	F/R/P SUBSTRUCTURE - LINCOLN	20	20	0	05OCT10	01NOV10	01AUG11	01AUG11	NS 50020*	NS 00070, NS 50130	186
NS 50050	F/R/P ABUTMENT - PIER 2 - LINCOLN	25	25	0	19OCT10	23NOV10	01AUG11	01AUG11	NS 50040*	NS 00070, NS 50060*	171
NS 50060	SET P/C GIRDERS - LINCOLN	1	1	0	24NOV10	24NOV10	22AUG11	22AUG11	NS 50020, NS 50050*, NS 15060*, NS 50070*	NS 50100, NS 50110	185
NS 50070	F/R/P DIAPHRAGMS & RDWY	20	20	0	29NOV10	27DEC10	23AUG11	20SEP11	NS 50060*	NS 50100, NS 50110	185
NS 50130	SET PED BRIDGE	1	1	0	02MAY11	02MAY11	30SEP11	30SEP11	NS 00070*, NS 00510, NS 50140*	NS 50140*	166
NS 50140	F/R/P ROADWAY DECK - LINCOLN	20	20	0	03MAY11	31MAY11	03OCT11	28OCT11	NS 50130*	NS 2011	166
NS 50080	CONSTRUCT GEO WALLS - LINCOLN	10	10	0	16MAY11	27MAY11	16AUG11	29AUG11	NS 00070, NS 40080*, NS 50090*	NS 50100*	64
NS 50090	INSTALL P/C WALL PANELS - LINCOLN	15	15	0	31MAY11	20JUN11	30AUG11	20SEP11	NS 50080*	NS 50100*	64
NS 50100	F/R/P APPROACH SLABS - LINCOLN	15	15	0	21JUN11	12JUL11	21SEP11	11OCT11	NS 50070, NS 50090*, NS 50110*	NS 50110*	64
NS 50110	F/R/P TRAFFIC BARRIERS - LINCOLN	10	10	0	13JUL11	26JUL11	12OCT11	25OCT11	NS 50070, NS 50100*	NS 1700	64
NS 1100	LINCOLN POND 86X	30	30	0	16SEP10	27OCT10	03NOV10	17DEC10	NS 00060*	NS 1105*	34
NS 1105	ENGR DISPERSION SHT DD3	10	10	0	28OCT10	10NOV10	20DEC10	04JAN11	NS 1100*	NS 1107	34
NS 1107	SUBGRADE 104X.8E LL	56	56	0	05JAN11	25MAR11	05JAN11	25MAR11	NS 1105, NS 1210*	NS 1110*, NS 1350*	0
NS 1110	STORM DRAINAGE LL LINC TO GER	7	7	0	28MAR11	05APR11	22JUL11	01AUG11	NS 1107*	NS 1112*	82
NS 1112	VMS + ITS LL LINC TO GER	10	10	0	06APR11	19APR11	02AUG11	15AUG11	NS 1110*	NS 1115*	82
NS 1115	CSBC LL LINC TO GER	15	15	0	20APR11	10MAY11	16AUG11	06SEP11	NS 1112*	NS 1125*	82
NS 1125	ACP LL LINC TO GER	3	3	0	11MAY11	13MAY11	07SEP11	09SEP11	NS 1115*	NS 1670	82
NS 70010	SHORE OVEREX PLACE	10	10	0	28SEP10	11OCT10	06APR11	19APR11	NS 00060, NS 00500, NS 70020*	NS 70020*	129
NS 70020	SETTLEMENT PERIOD	22	22	0	12OCT10	10NOV10	20APR11	19MAY11	NS 70010*	NS 40000*	129
NS 40000	SHORE/EXC PIER 1 - GERLACH	5	5	0	12NOV10	18NOV10	20MAY11	26MAY11	NS 70020*, NS 00502	NS 40010*, NS 40030*	129
NS 40010	F/R/P FOOTING - PIER 1 - GERLACH	10	10	0	19NOV10	06DEC10	27MAY11	10JUN11	NS 40000*	NS 40020*, NS 40040*	129
NS 40030	SHORE/EXC PIER 2 - GERLACH	5	5	0	19NOV10	29NOV10	06JUN11	10JUN11	NS 40000*	NS 40040	134
NS 40040	F/R/P FOOTING - PIER 2 - GERLACH	10	10	0	07DEC10	20DEC10	13JUN11	24JUN11	NS 40010*, NS 40030	NS 40050*	129
NS 40020	F/R/P ABUTMENT - PIER 1 - GERLACH	25	25	0	07DEC10	12JAN11	27JUN11	01AUG11	NS 40010*	NS 00070, NS 40060, NS 40060*	139
NS 40050	F/R/P ABUTMENT - PIER 2 - GERLACH	25	25	0	21DEC10	27JAN11	27JUN11	01AUG11	NS 40040*	NS 00070, NS 40060*	129
NS 40060	SET P/C GIRDERS - GERLACH	5	5	0	28JAN11	03FEB11	16AUG11	22AUG11	NS 40020, NS 40050*, NS 40070*	NS 40100, NS 40110	64
NS 40070	F/R/P DIAPHRAGMS & RDWY	20	20	0	04FEB11	04MAR11	23AUG11	20SEP11	NS 40060*	NS 40100, NS 40110	139
NS 40080	CONSTRUCT GEO WALLS - GERLACH	10	10	0	02MAY11	13MAY11	02AUG11	15AUG11	NS 00070*, NS 40020, NS 40090*, NS 45000*	NS 40100*	74
NS 40090	INSTALL P/C WALL PANELS - GERLACH	15	15	0	18MAY11	06JUN11	30AUG11	20SEP11	NS 40080*	NS 40100*	74
NS 40100	F/R/P APPROACH SLABS - GERLACH	15	15	0	07JUN11	27JUN11	21SEP11	11OCT11	NS 40070, NS 40090*	NS 40110*	74
NS 40110	F/R/P TRAFFIC BARRIERS - GERLACH	10	10	0	28JUN11	12JUL11	12OCT11	25OCT11	NS 40070, NS 40100*	NS 1700	74
NS 1200	ENGINEERED DISP LL320 TO 397	10	10	0	16SEP10	29SEP10	18NOV10	03DEC10	NS 00060*	NS 1210	44
NS 1210	SUBGRADE 40X.31E GERLACH TO FAIRVIEW	20	20	0	06DEC10	04JAN11	06DEC10	04JAN11	NS 1200, NS 1250*	NS 1107*, NS 1220*	0
NS 1220	STORM DRAINAGE LL	30	30	0	05JAN11	16FEB11	28JUN11	09AUG11	NS 1210*	NS 1225*	121
NS 1225	SIGN BRIDGE 1 PLUS ILLUM	7	7	0	17FEB11	28FEB11	10AUG11	18AUG11	NS 1220*	NS 1230*	121
NS 1230	CSBC LL GERLACH TO FAIRVIEW	10	10	0	01MAR11	14MAR11	19AUG11	01SEP11	NS 1225*	NS 1240*	121
NS 1240	ACP LL GERLACH TO FAIRVIEW	5	5	0	15MAR11	21MAR11	02SEP11	09SEP11	NS 1230*	NS 1670	121
NS 30000	SHORE/EXC PIER 1 - FAIRVIEW	15	15	0	14SEP10	04OCT10	06MAY11	28MAY11	NS 00502*	NS 30010*, NS 30030*	161
NS 30030	SHORE/EXC PIER 2 - FAIRVIEW	15	15	0	05OCT10	25OCT10	27MAY11	17JUN11	NS 30000*, NS 00507*	NS 30040*	161
NS 30010	F/R/P FOOTING - PIER 1 - FAIRVIEW	10	10	0	05OCT10	18OCT10	06JUN11	17JUN11	NS 30000*	NS 30020*, NS 30040	166
NS 30020	F/R/P ABUTMENT - PIER 1 - FAIRVIEW	20	20	0	19OCT10	16NOV10	05JUL11	01AUG11	NS 30010*	NS 00070, NS 30060, NS 30060*	176
NS 30040	F/R/P FOOTING - PIER 2 - FAIRVIEW	10	10	0	26OCT10	08NOV10	20JUN11	01JUL11	NS 30010, NS 30030*	NS 30050*	161
NS 30050	F/R/P ABUTMENT - PIER 2 - FAIRVIEW	20	20	0	09NOV10	09DEC10	05JUL11	01AUG11	NS 30040*	NS 00070, NS 30060*	161
NS 30060	SET P/C GIRDERS - FAIRVIEW	1	1	0	10DEC10	10DEC10	16SEP11	16SEP11	NS 30020, NS 30050*, NS 30070*	NS 30070*	193
NS 30080	CONSTRUCT GEO WALLS - FAIRVIEW	10	10	0	10DEC10	23DEC10	19SEP11	30SEP11	NS 30020, NS 30050*, NS 30080*	NS 30080*	194
NS 30070	F/R/P DIAPHRAGMS & RDWY	25	25	0	13DEC10	18JAN11	19SEP11	21OCT11	NS 30060*	NS 30100*, NS 30110	193
NS 30090	INSTALL P/C WALL PANELS - FAIRVIEW	15	15	0	27DEC10	18JAN11	03OCT11	21OCT11	NS 30080*	NS 30100	194
NS 30100	F/R/P APPROACH SLABS - FAIRVIEW	15	15	0	20JAN11	09FEB11	24OCT11	14NOV11	NS 30070*, NS 30090	NS 30110*	193

Start Date: 07SEP10
 Finish Date: 30NOV11
 Data Date: 07SEP10
 Run Date: 13SEP10 16:14

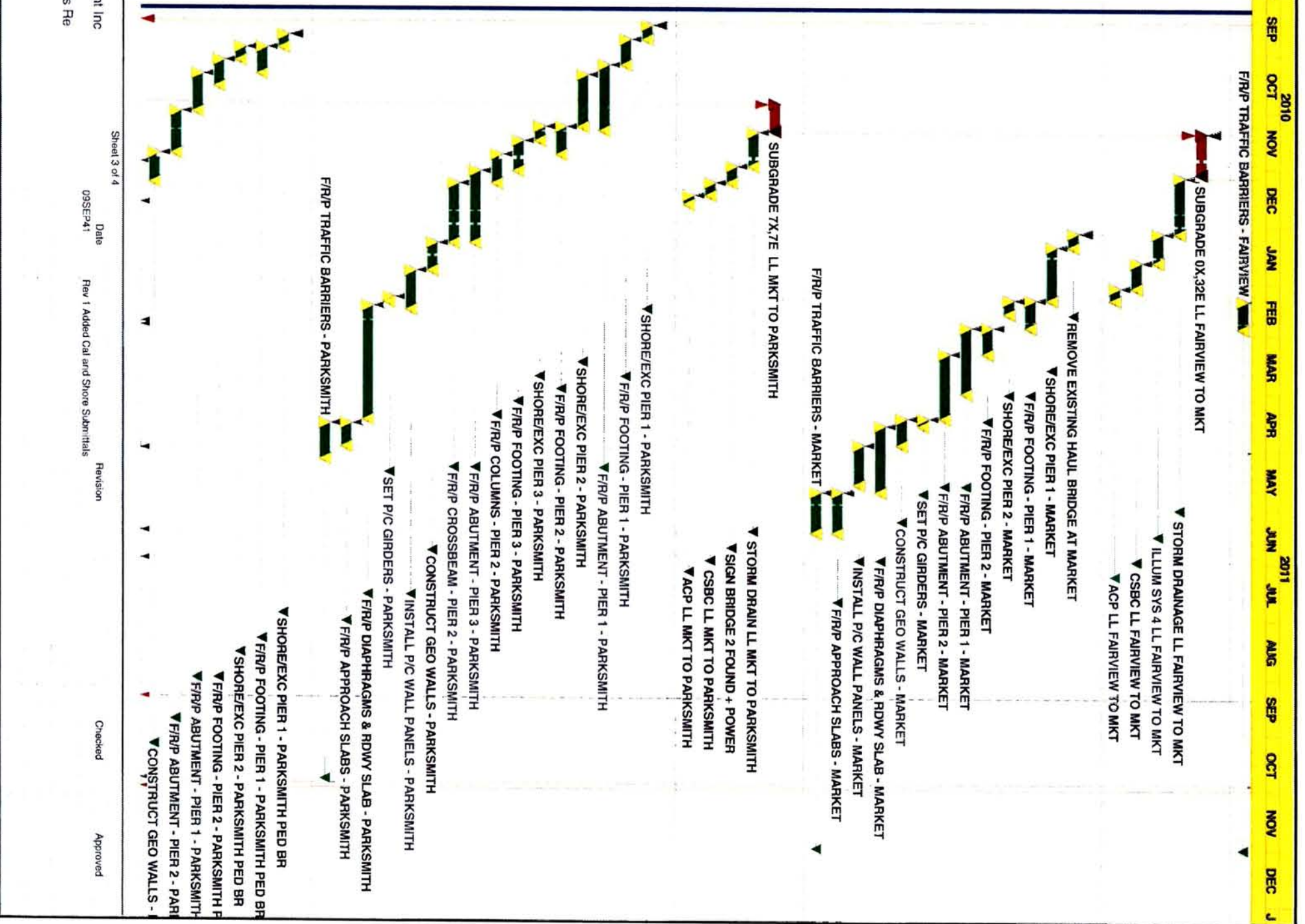
Early Bar
 Float Bar
 Progress Bar
 Critical Activity

SBRL
 Graham Construction & Management Inc
 NSC Freya to Farwell SB Add Lanes Re
 Baseline Schedule Rev 1

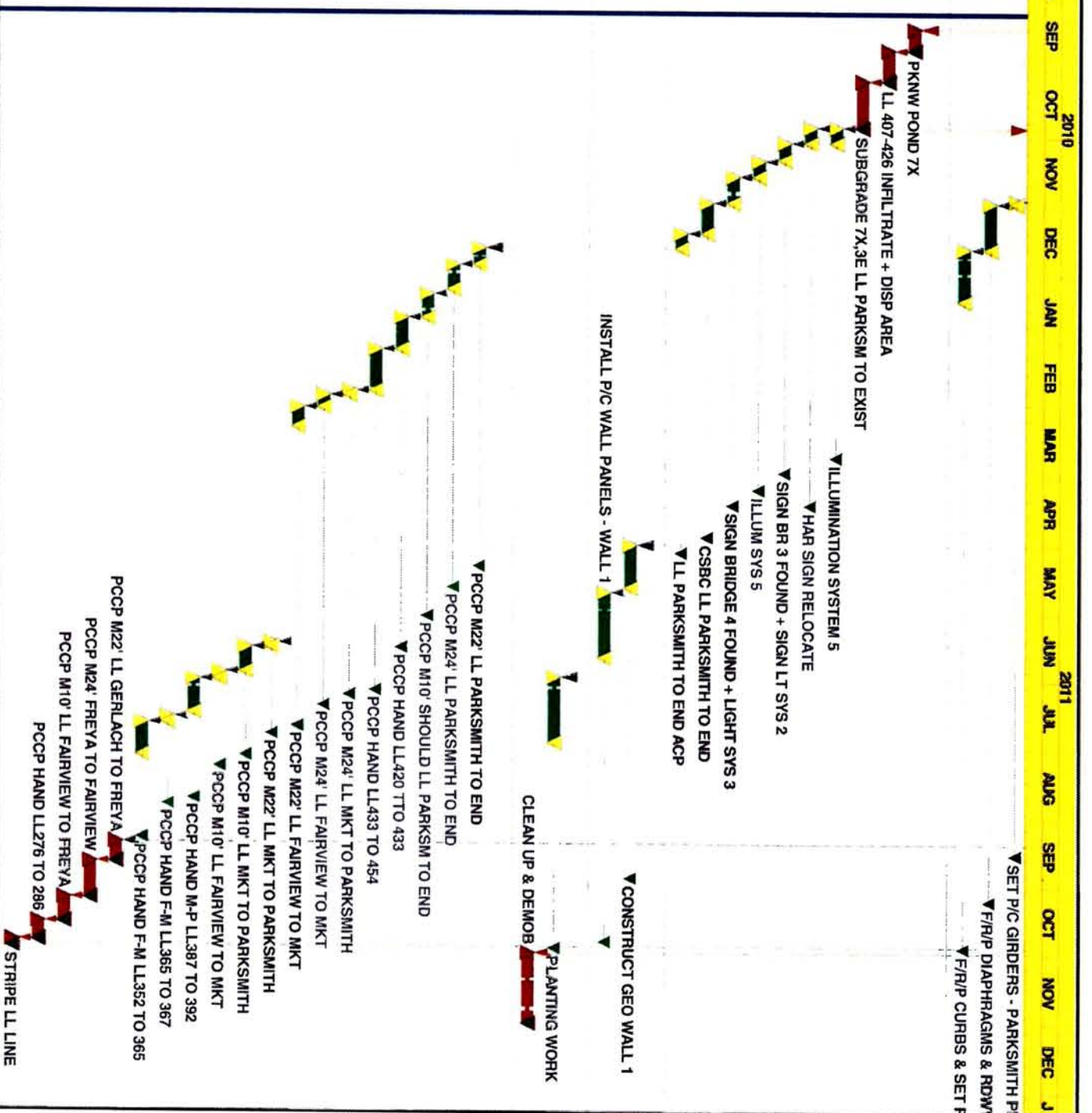
Sheet 2 of 4
 Date: 08SEP11
 Revision: Rev 1 Added Call and Shore Submittals
 Checked: Approved

© Palmavera Systems, Inc.

Activity ID	Activity Description	Orig Dur	Plan Dur	%	Early Start	Early Finish	Late Start	Late Finish	Predecessors	Successors	Total Float
NS 30110	F/R/P TRAFFIC BARRIERS - MARKET ST BRIDGE	10	10	0	10FEB11	24FEB11	15NOV11	30NOV11	NS 30070, NS 30100*		193
NS 1250	SUBGRADE 0X.32E LL	14	14	0	12NOV10	09DEC10	12NOV10	09DEC10	NS 00060, NS 00505, NS 1210*, NS 1260*		0
NS 1260	STORM DRAINAGE LL	20	20	0	08DEC10	04JAN11	04MAY11	01JUN11	NS 1250*	NS 1265*	103
NS 1265	ILLUM SYS 4 LL FAIRVIEW TO MKT	10	10	0	05JAN11	19JAN11	02JUN11	15JUN11	NS 1260*	NS 1270*	103
NS 1270	CSBC LL FAIRVIEW TO MKT	10	10	0	20JAN11	02FEB11	16JUN11	29JUN11	NS 1265*	NS 1280*	103
NS 1280	ACP LL FAIRVIEW TO MKT	5	5	0	09FEB11	09FEB11	30JUN11	07JUL11	NS 1270*	NS 1630	103
NS 70000	REMOVE EXISTING HAUL	5	5	0	05JAN11	11FEB11	11FEB11	17FEB11	NS 00060, NS 00514*	NS 20000*	26
NS 20000	SHORE/EXC PIER 1 - MARKET	20	20	0	12JAN11	09FEB11	18FEB11	18MAR11	NS 70000*, NS 00502, NS 20010*, NS 20030*		26
NS 20010	F/R/P FOOTING - PIER 1 - MARKET	10	10	0	10FEB11	24FEB11	21MAR11	01APR11	NS 20000*	NS 20020*, NS 20040*	26
NS 20030	SHORE/EXC PIER 2 - MARKET	5	5	0	10FEB11	16FEB11	28MAR11	01APR11	NS 20000*	NS 20040	31
NS 20040	F/R/P FOOTING - PIER 2 - MARKET	10	10	0	25FEB11	10MAR11	04APR11	15APR11	NS 20010*, NS 20030	NS 20050*	26
NS 20020	F/R/P ABUTMENT - PIER 1 - MARKET	25	25	0	25FEB11	31MAR11	18APR11	20MAY11	NS 20010*	NS 00070, NS 20060, NS 20080*	36
NS 20050	F/R/P ABUTMENT - PIER 2 - MARKET	25	25	0	11MAR11	14APR11	18APR11	20MAY11	NS 20040*	NS 20060*, NS 20080*	26
NS 20060	SET P/C GIRDERS - MARKET	2	2	0	15APR11	18APR11	23MAY11	24MAY11	NS 20020, NS 20050*, NS 20070*		26
NS 20080	CONSTRUCT GEO WALLS - MARKET	10	10	0	15APR11	28APR11	25MAY11	08JUN11	NS 20020, NS 20050*	NS 20090*	28
NS 20070	F/R/P DIAPHRAGMS & RDWY	25	25	0	19APR11	23MAY11	25MAY11	29JUN11	NS 20060*	NS 20100*, NS 20110*	26
NS 20090	INSTALL P/C WALL PANELS - MARKET	15	15	0	29APR11	19MAY11	09JUN11	29JUN11	NS 20080*	NS 20100	28
NS 20100	F/R/P APPROACH SLABS - MARKET	15	15	0	24MAY11	14JUN11	30JUN11	21JUL11	NS 20070*, NS 20090	NS 1640*	26
NS 20110	F/R/P TRAFFIC BARRIERS - MARKET	15	15	0	24MAY11	14JUN11	07NOV11	30NOV11	NS 20070*	NS 1625	116
NS 1290	SUBGRADE 7X.7E LL MKT TO PARKSMITH	10	10	0	28OCT10	10NOV10	28OCT10	10NOV10	NS 1520*	NS 1300*	0
NS 1300	STORM DRAIN LL MKT TO PARKSMITH	10	10	0	12NOV10	29NOV10	31MAY11	13JUN11	NS 1290*	NS 1302*	135
NS 1302	SIGN BRIDGE 2 FOUND + POWER	7	7	0	30NOV10	08DEC10	14JUN11	22JUN11	NS 1300*	NS 1310*	135
NS 1310	CSBC LL MKT TO PARKSMITH	5	5	0	09DEC10	15DEC10	23JUN11	29JUN11	NS 1302*	NS 1320*	135
NS 1320	ACP LL MKT TO PARKSMITH	3	3	0	16DEC10	20DEC10	30JUN11	05JUL11	NS 1310*	NS 1625	135
NS 10000	SHORE/EXC PIER 1 - PARKSMITH	5	5	0	16SEP10	22SEP10	08FEB11	14FEB11	NS 00060*, NS 00500, NS 10010*, NS 10030		97
NS 10010	F/R/P FOOTING - PIER 1 - PARKSMITH	10	10	0	23SEP10	06OCT10	09MAR11	22MAR11	NS 10000*	NS 10020*, NS 10080	112
NS 10020	F/R/P ABUTMENT - PIER 1 - PARKSMITH	25	25	0	07OCT10	10NOV10	06APR11	10MAY11	NS 10010*	NS 10100, NS 10140	122
NS 10030	SHORE/EXC PIER 2 - PARKSMITH	20	20	0	12OCT10	08NOV10	15FEB11	15MAR11	NS 10000, NS 00508*	NS 10040*, NS 10070*	84
NS 10040	F/R/P FOOTING - PIER 2 - PARKSMITH	10	10	0	09NOV10	23NOV10	16MAR11	29MAR11	NS 10030*	NS 10050*	84
NS 10070	SHORE/EXC PIER 3 - PARKSMITH	5	5	0	09NOV10	16NOV10	16MAR11	22MAR11	NS 10030*	NS 10080*	84
NS 10080	F/R/P FOOTING - PIER 3 - PARKSMITH	10	10	0	17NOV10	02DEC10	23MAR11	05APR11	NS 10010, NS 10070*	NS 10090*	84
NS 10050	F/R/P COLUMNS - PIER 2 - PARKSMITH	10	10	0	24NOV10	09DEC10	30MAR11	12APR11	NS 10040*	NS 10060*	84
NS 10090	F/R/P ABUTMENT - PIER 3 - PARKSMITH	25	25	0	03DEC10	10JAN11	06APR11	10MAY11	NS 10080*	NS 10100, NS 10140*	84
NS 10060	F/R/P CROSSBEAM - PIER 2 - PARKSMITH	20	20	0	10DEC10	10JAN11	13APR11	10MAY11	NS 10050*	NS 10100	84
NS 10140	CONSTRUCT GEO WALLS - PARKSMITH	10	10	0	11JAN11	25JAN11	13JUN11	24JUN11	NS 10020, NS 10090*	NS 10150*	106
NS 10150	INSTALL P/C WALL PANELS - PARKSMITH	15	15	0	26JAN11	15FEB11	27JUN11	18JUL11	NS 10140*	NS 10120, NS 10130	106
NS 10100	SET P/C GIRDERS - PARKSMITH	3	3	0	09FEB11	11FEB11	11MAY11	13MAY11	NS 00520*, NS 10020, NS 10110*		64
NS 10110	F/R/P DIAPHRAGMS & RDWY	44	44	0	14FEB11	15APR11	16MAY11	18JUL11	NS 10100*	NS 10120*, NS 10130*	64
NS 10130	F/R/P APPROACH SLABS - PARKSMITH	10	10	0	18APR11	29APR11	19JUL11	01AUG11	NS 10110*, NS 10150	NS 00070*	64
NS 10120	F/R/P TRAFFIC BARRIERS - PARKSMITH	15	15	0	18APR11	06MAY11	05OCT11	25OCT11	NS 10110*, NS 10150	NS 1700	119
NS 15000	SHORE/EXC PIER 1 - PARKSMITH PED BR	5	5	0	21SEP10	27SEP10	22JUL11	28JUL11	NS 50000*, NS 00502, NS 15010*, NS 15030*		209
NS 15010	F/R/P FOOTING - PIER 1 - PARKSMITH PED BR	10	10	0	28SEP10	11OCT10	29JUL11	11AUG11	NS 15000*	NS 15020*	209
NS 15030	SHORE/EXC PIER 2 - PARKSMITH PED BR	5	5	0	28SEP10	04OCT10	12AUG11	18AUG11	NS 15000*	NS 15040*	219
NS 15040	F/R/P FOOTING - PIER 2 - PARKSMITH PED BR	10	10	0	05OCT10	18OCT10	19AUG11	01SEP11	NS 15030*	NS 15050	219
NS 15020	F/R/P ABUTMENT - PIER 1 - PARKSMITH	15	15	0	12OCT10	01NOV10	12AUG11	01SEP11	NS 15010*	NS 15050*, NS 15080	209
NS 15050	F/R/P ABUTMENT - PIER 2 - PARKSMITH	15	15	0	02NOV10	23NOV10	02SEP11	23SEP11	NS 15020*, NS 15040	NS 15080*	209
NS 15080	CONSTRUCT GEO WALLS - PARKSMITH	10	10	0	24NOV10	09DEC10	26SEP11	07OCT11	NS 15020, NS 15050*	NS 15090	209



Activity ID	Activity Description	Orig Dur	Rem Dur	%	Early Start	Early Finish	Late Start	Late Finish	Predecessors	Successors	Total Float
NS 15060	SET P/C GIRDEBS -	1	1	0	29NOV10	29NOV10	16SEP11	16SEP11	NS 50060*	NS 15070*	202
NS 15070	F/R/P DIAPHRAGMS & RDWY -	15	15	0	30NOV10	20DEC10	19SEP11	07OCT11	NS 15060*	NS 15090*	202
NS 15090	F/R/P CURBS & SET RAILING -	15	15	0	21DEC10	12JAN11	10OCT11	28OCT11	NS 15070*, NS 15080	NS 2011	202
PARKSMITH TO EXIST (DET. DRAIN LANE)											
NS 15000	PKNW POND 7X	7	7	0	14SEP10	22SEP10	14SEP10	22SEP10	NS 00502*	NS 1510*	0
NS 15100	LL 407-426 INFILTRATE + DISP	10	10	0	23SEP10	06OCT10	23SEP10	06OCT10	NS 1500*	NS 1520*	0
NS 15200	SUBGRADE 7X,3E LL PARKSM	15	15	0	07OCT10	07OCT10	07OCT10	27OCT10	NS 1510*	NS 1290*, NS 1522*, NS 1527*	0
NS 15250	ILLUMINATION SYSTEM 5	5	5	0	28OCT10	08NOV10	17MAR11	23MAR11	NS 1520*	NS 1530	93
NS 15220	HAR SIGN RELOCATE	5	5	0	28OCT10	08NOV10	07APR11	13APR11	NS 1520*	NS 1530	108
NS 15270	SIGN BR 3 FOUND + SIGN LT	5	5	0	04NOV10	10NOV10	24MAR11	30MAR11	NS 1525*	NS 1529*	93
NS 15290	ILLUM SYS 5	5	5	0	12NOV10	18NOV10	31MAR11	06APR11	NS 1527*	NS 1532*	93
NS 15320	SIGN BRIDGE 4 FOUND +	5	5	0	19NOV10	29NOV10	07APR11	13APR11	NS 1529*	NS 1530*	93
NS 15300	CSBC LL PARKSMITH TO END	10	10	0	30NOV10	13DEC10	14APR11	27APR11	NS 1522*, NS 1532*	NS 1540*	93
NS 15400	LL PARKSMITH TO END ACP	5	5	0	14DEC10	20DEC10	28APR11	04MAY11	NS 1530*	NS 1600*	93
WALL WORK											
NS 45000	CONSTRUCT GEO WALL 1	15	15	0	02MAY11	20MAY11	07SEP11	27SEP11	NS 40080*	NS 45010*	89
NS 45010	INSTALL P/C WALL PANELS -	20	20	0	23MAY11	20JUN11	28SEP11	25OCT11	NS 45000*	NS 1700	89
LANDSCAPE WORK											
NS 90020	PLANTING WORK	20	20	0	30JUN11	28JUL11	03OCT11	28OCT11	NS 1430*	NS 2011	65
NS 90030	CLEAN UP & DEMOB	20	20	0	31OCT11	30NOV11	31OCT11	30NOV11	NS 2011*		0
PORTLAND CEMENT CONCRETE PAVING											
NS 16000	PCCP M22' LL PARKSMITH TO	4	4	0	21DEC10	27DEC10	05MAY11	10MAY11	NS 1540*	NS 1605*	93
NS 16050	PCCP M24' LL PARKSMITH TO	8	8	0	28DEC10	07JAN11	11MAY11	20MAY11	NS 1600*	NS 1610*	93
NS 16100	PCCP M10' SHOULD LL	8	8	0	10JAN11	20JAN11	23MAY11	02JUN11	NS 1605*	NS 1615*	93
NS 16150	PCCP HAND LL420 TTO 433	10	10	0	21JAN11	03FEB11	03JUN11	16JUN11	NS 1610*	NS 1620*	93
NS 16200	PCCP HAND LL433 TO 454	12	12	0	04FEB11	22FEB11	17JUN11	05JUL11	NS 1615*	NS 1625*	93
NS 16250	PCCP M24' LL MKT TO	2	2	0	23FEB11	24FEB11	06JUL11	07JUL11	NS 1620*, NS1320	NS 1630*	93
NS 16300	PCCP M24' LL FAIRVIEW TO	3	3	0	25FEB11	01MAR11	08JUL11	12JUL11	NS 1280*, NS 1625*	NS 1635*	93
NS 16350	PCCP M22' LL FAIRVIEW TO	7	7	0	02MAR11	10MAR11	13JUL11	21JUL11	NS 1630*	NS 1640*	93
NS 16400	PCCP M22' LL MKT TO	2	2	0	15JUN11	16JUN11	22JUL11	25JUL11	NS 20100*, NS 1635	NS 1645*	26
NS 16450	PCCP M10' LL MKT TO	7	7	0	17JUN11	27JUN11	26JUL11	03AUG11	NS 1640*	NS 1650*	26
NS 16500	PCCP M10' LL FAIRVIEW TO	3	3	0	28JUN11	30JUN11	04AUG11	09AUG11	NS 1645*	NS 1655*	26
NS 16550	PCCP HAND M-P LL387 TO 392	10	10	0	01JUL11	15JUL11	09AUG11	22AUG11	NS 1650*	NS 1660*	26
NS 16600	PCCP HAND F-M LL365 TO 367	3	3	0	18JUL11	20JUL11	23AUG11	25AUG11	NS 1655*	NS1665*	26
NS16650	PCCP HAND F-M LL352 TO 365	10	10	0	21JUL11	03AUG11	26AUG11	09SEP11	NS 1660*	NS 1670	26
NS 16700	PCCP M22' LL GERLACH TO	7	7	0	12SEP11	20SEP11	12SEP11	20SEP11	NS 1125*, NS 1240, NS 1675*	NS 1675*	0
NS 16750	PCCP M24' FREYA TO	12	12	0	21SEP11	06OCT11	21SEP11	06OCT11	NS 1670*	NS 1680*	0
NS 16800	PCCP M10' LL FAIRVIEW TO	7	7	0	07OCT11	17OCT11	07OCT11	17OCT11	NS 1675*	NS 1685*	0
NS 16850	PCCP HAND LL276 TO 286	6	6	0	18OCT11	25OCT11	18OCT11	25OCT11	NS 1700*	NS 1700*	0
NS 17000	STRIPE LL LINE	3	3	0	26OCT11	26OCT11	26OCT11	28OCT11	NS 10120, NS 40110, NS 2011*	NS 2011*	0



Start Date: 07SEP10, 30NOV11
 Finish Date: 07SEP10, 07SEP10
 Run Date: 13SEP10 16:14

Legend:
 Early Bar (Green)
 Float Bar (Yellow)
 Progress Bar (Blue)
 Critical Activity (Red)

SBBL

Graham Construction & Management Inc
 NSC Freya to Farwell SB Add Lanes Re
 Baseline Schedule Rev 1

Sheet 4 of 4
 Date: 09SEP11
 Revision: Rev 1 Added Cal and Shore Submittals

Checked: _____ Approved: _____

© Primavera Systems, Inc.

Change Management Plan

There are several categories of change that may occur during the course of the contract work as outlined in the change order checklist and the construction manual. Change management protocol and processes contained in the contract language (Section 1-04), the guidance contained in the Construction Manual Section 1-2, and the guidance contained in Regional Instructional Memos must be followed without exception. Guidance on the change management process and the content of change management documentation (change orders) is contained in the following on-line documents:

- Contractor Changes vs. Specification Changes
- Change Orders and Approvals
- Change Order Review Standards
- Minor Changes
- Minor Change Guidelines
- Execution Authority for Change Orders
- Minor Changes – Justification of Cost
- Changes and Added Work
- HQ Change Order Review Criteria
- Standardized Change Order Transmittal Memo

Quality Assurance/Quality Control Plan

All quality control procedures for materials and workmanship will be in accordance with the contract provisions and Construction Manual.

Quality Assurance Control Matrix Items

QA/QC item	Lead	Standard(s) or References
Project Materials Files	Janet Jordan	
Initial ROM	HQ Materials Lab	CM 9-1.5A
ROM Maintenance	Janet Jordan/Lynn Hill	CM 9-1.5A
Tester Qualification	Brett Johnson	
Acceptance Sampling	As assigned	CM 9-4, and Special Provisions
Field Acceptance and Testing	As assigned	CM 9-4, and Special Provisions
Lab Acceptance Testing	Region Materials Lab	CM 9-4, and Special Provisions
Source Approval	Varies	CM 9-1.5B
Field Verification of Materials	Chad Roberts Mike Meyers Mark Melnick Others as Necessary	CM 9-1.5C
WZTC Review (If Applicable)	Richard Moorhead	Traffic Control Plans and MUTCD
Maintenance Review	Robert Blegen	IM 01.02
Management Review	Glenn Wagemann Engineering Manager	
Region Compliance Review	Rick Jordan	CM 10-5
Materials Certification	Bob Hilmes	

Project Communication Plan

Facilitating action and making quality, timely project decisions is directly related to how well we communicate as a team. Effective communication requires sufficient, timely and accurate flow of information through the appropriate channels. The communication channels and protocol for various project activities are as follows:

The project office staff is the primary contact for all project activities

Area Codes are 509 unless stated otherwise.

Prime Contractor: Graham Construction & Management, Inc. (Office) 534-1030

Traffic Control Contractor: Graham Construction & Management, Inc.

Traffic Control Supervisor (TCS) Traffic Control Manager (TCM)

1st Contact: Greg Anderson, TCM – Graham Construction (Cell) 939-9464

2nd Contact: Annette Nickleby, TCS – Graham Construction (Cell) 879-2559

3rd Contact: TBA

<u>Prime Contractor: Graham Construction</u>	<u>Cell</u>	<u>Office</u>
Project Manager (Interim): Nate Thomas	475-4680	534-1030
SPCC Lead: Greg Anderson	939-9464	534-1030
TESC Lead: Greg Anderson	939-9464	534-1030
Project Superintendent: Greg Anderson	939-9464	534-1030

<u>WSDOT: Bob Hilmes, Project Engineer</u>	<u>Cell</u>	<u>Home</u>	<u>Office</u>
Project Inspector (Civil): Chad Roberts	939-4250		324-6237
Project Inspector (Structures): Mike Meyers	993-3548		324-6236
Project Inspector (Structures): Mark Melnick	939-1822		324-6240
Project Manager: Terrence Lynch	590-3732	487-4584	324-6235
Assistant Project Engineer: Mark Allen	209-7552	466-4368	324-6238
Project Engineer: Bob Hilmes	220-5347	467-6991	324-6232
Spokane Maintenance: Robert Blegen			324-6586

Other Agencies:

Emergency	911
Washington State Patrol	456-4101
Spokane County Sheriff	477-2240
Avista Utilities- Tom Burke (Power)	495-2305
North Spokane Water Dist. #8 - Gary Lowe	467-6727
Others – See Contract Special Provisions	
Avista Utilities – Jim Mark (Gas)	495-4094

Transition & Closure Plan

Optimal success for this project – realization of the project purpose - requires delivery of a quality product resulting in satisfied customers and conducting a deliberate closure. Timely closure of the contract and the accuracy and completeness of the contract records are an important part of contract administration. The Project Closure Process Informational Memo (IM 99-01) and the guidance provided in Chapter 10-3 of the Construction Manual will be used to assemble a complete record of the contract.

The components and order of the Closure Plan are identified below:

<u>Component</u>	<u>Guidance</u>
1) Issue Substantial Completion	IM 00-02
2) Conduct Pertinent Reviews	
i) Maintenance Review	IM 01-02
ii) Develop Final Punch list	
3) Issue Physical Completion	IM 00-03
4) Resolve Outstanding Issues	
i) Resolve Payment Issues	
ii) Resolve Materials Deficiencies	
iii) Resolve Time (Working Days) Issues	CM 1-2.5
iv) Resolve Wage Rate Issues	
v) Resolve Claims	CM 1-3.3
vi) Address over/under runs	CM 1-2.4C(1)
5) Issue Prime Contractor Performance Report	M 41-40
6) Complete As-Built Plans	
7) Complete the Project Material Certification	CM 9-1.5
8) Review and Document Lessons Learned	
9) Evaluate, Reward and Recognize team members	
10) Run the Final Estimate	CM 1-3.1C
11) Issue Final Contract Voucher	CM 1-3.3A(4)
12) Issue Completion Letter	IM 00-14
13) Submit Permanent Final Records to Region Documentation	CM 10-3
14) File Temporary Project Files	CM 10-3.1B
15) Issue Notice of Completion to L&I, Revenue, & HQ Accounting	
16) Receive Releases from L&I, Revenue, & HQ Accounting	
17) Release Retainage	
18) Balance and Close Work Order	
19) Final Acceptance	
20) Demobilize Staff and Resources	

Construction Team Endorsement

Work Plan Endorsement Statement

By endorsing this Work Plan the **Project Team Members and Specialty Groups** agree to undertake the duties, responsibilities and directives per **Executive Order E 1032.00** dated **July 1, 2005**.

“We endorse this Work Plan and are committed to actively supporting it. We accept responsibility for fulfilling any aspect of the plan that applies to us, including providing resources, actively participating, and effectively communicating. We know what to do and are prepared to act. Our endorsement is an active and positive statement that we are committed to fulfilling the responsibilities designated in this plan.”

<u>Name:</u>	<u>Initials</u>	<u>Role</u>
Bob Hilmes	_____	Project Engineer
Mark Allen	_____	Assistant Project Engineer
Terrence Lynch	_____	Project Manager
Janet Jordan	_____	Office Engineer
Mike Meyers	_____	Project Team Member
Chad Roberts	_____	Project Team Member
Mark Melnick	_____	Project Team Member
Tammie Williams	_____	Environmental/Hydraulics
Al Gilson	_____	Public Information Officer
John Olk/Mark Szewcik	_____	HQ Bridge and Structures
Darryl Ratcliff	_____	Utilities
Kevin Littleton	_____	Materials Engineer
Ken Heale	_____	Signal Shop Supervisor
Harold White/Larry Frostad	_____	ER Traffic Office

Management Endorsement

Work Plan Endorsement Statement

By endorsing this Work Plan the **Executives and Senior Managers** agree to undertake the duties, responsibilities and directives per **Executive Order E 1032.00** dated **July 1, 2005**.

“We endorse this Work Plan and are committed to actively supporting it. We accept responsibility for fulfilling any aspect of the plan that applies to us, including providing resources, actively participating, and effectively communicating. We know what to do and are prepared to act. Our endorsement is an active and positive statement that we are committed to fulfilling the responsibilities designated in this plan.”

Name:	Initials	Role
Mike Frucci	_____	ER Acting ARA Construction
Glenn Wagemann	_____	Engineering Manager

Lynch, Terrence

From: Lynch, Terrence
Sent: Wednesday, September 15, 2010 8:11 AM
To: Hilmes, Bob; Allen, Mark; Jordan, Janet; Meyers, Mike; Roberts, Chad; Melnick, Mark; Williams, Tammie; Gilson, Al; Olk, John; Szewcik, Mark; Ratcliff, Darryl; Littleton, Kevin; Heale, Ken; Frostad, Larry; Gaines, Mark; Jones, David M
Subject: C-7967 NSC Freya St. to Farwell Rd. SB Additional Lanes - Construction Management Plan for Endorsement
Attachments: C-7967 Construction Management Plan as of 9-15-10.pdf

Good Morning All,

Attached is the Construction Management Plan for the subject project. Please review at your convenience. The project is currently underway and endorsement of the plan is important. If you see or know of any problems regarding the CMP, please let me know right away so concerns can be addressed.

Please use this e-mail to "Approve" the plan by Sept. 30th, at the very latest, so that it may be forwarded to ER Construction Management for endorsement. If I haven't received a response by that time, I will assume the plan is acceptable and forward to management without a formal approval.

Thank you for your time.

Terrence Lynch

Project Manager
Eastern Region
Office: (509)324-6235
Cell: (509)590-3732

Tracking:

Recipient

Hilmes, Bob
Allen, Mark
Jordan, Janet
Meyers, Mike
Roberts, Chad
Melnick, Mark
Williams, Tammie
Gilson, Al
Olk, John
Szewcik, Mark
Ratcliff, Darryl
Littleton, Kevin
Heale, Ken
Frostad, Larry
Gaines, Mark
Jones, David M

Response

Approve: 9/15/2010 3:12 PM
Approve: 9/16/2010 10:23 AM
Approve: 9/15/2010 8:21 AM
Approve: 9/29/2010 12:04 PM
Approve: 9/28/2010 12:12 PM
Approve: 9/29/2010 12:10 PM
Approve: 9/15/2010 11:25 AM
No e-mail response
Approve: 9/15/2010 8:24 AM
Approve: 9/15/2010 8:52 AM
Rec'd e-mail response.
Approve: 9/15/2010 8:17 AM
Approve: 9/17/2010 7:04 AM

See e-mail response.

No e-mail response.

Lynch, Terrence

From: Gaines, Mark
Sent: Wednesday, September 15, 2010 2:25 PM
To: Lynch, Terrence
Subject: RE: C-7967 NSC Freya St. to Farwell Rd. SB Additional Lanes - Construction Management Plan for Endorsement

Looks good. No comments from me.

From: Lynch, Terrence
Sent: Wednesday, September 15, 2010 8:11 AM
To: Hilmes, Bob; Allen, Mark; Jordan, Janet; Meyers, Mike; Roberts, Chad; Melnick, Mark; Williams, Tammie; Gilson, Al; Olk, John; Szewcik, Mark; Ratcliff, Darryl; Littleton, Kevin; Heale, Ken; Frostad, Larry; Gaines, Mark; Jones, David M
Subject: C-7967 NSC Freya St. to Farwell Rd. SB Additional Lanes - Construction Management Plan for Endorsement

Good Morning All,

Attached is the Construction Management Plan for the subject project. Please review at your convenience. The project is currently underway and endorsement of the plan is important. If you see or know of any problems regarding the CMP, please let me know right away so concerns can be addressed.

Please use this e-mail to "Approve" the plan by Sept. 30th, at the very latest, so that it may be forwarded to ER Construction Management for endorsement. If I haven't received a response by that time, I will assume the plan is acceptable and forward to management without a formal approval.

Thank you for your time.

Terrence Lynch
Project Manager
Eastern Region
Office: (509)324-6235
Cell: (509)590-3732

Recipient

Frucci, Mike

Wagemann, Glenn

Response

Approve: 10/12/2010 10:24 AM

Approve: 10/12/2010 3:04 PM