

InRoads – Surface to LandXML File

Overview

The process for exporting an InRoads surface to a LandXML file uses the **LandXML Translator**.

Workflow

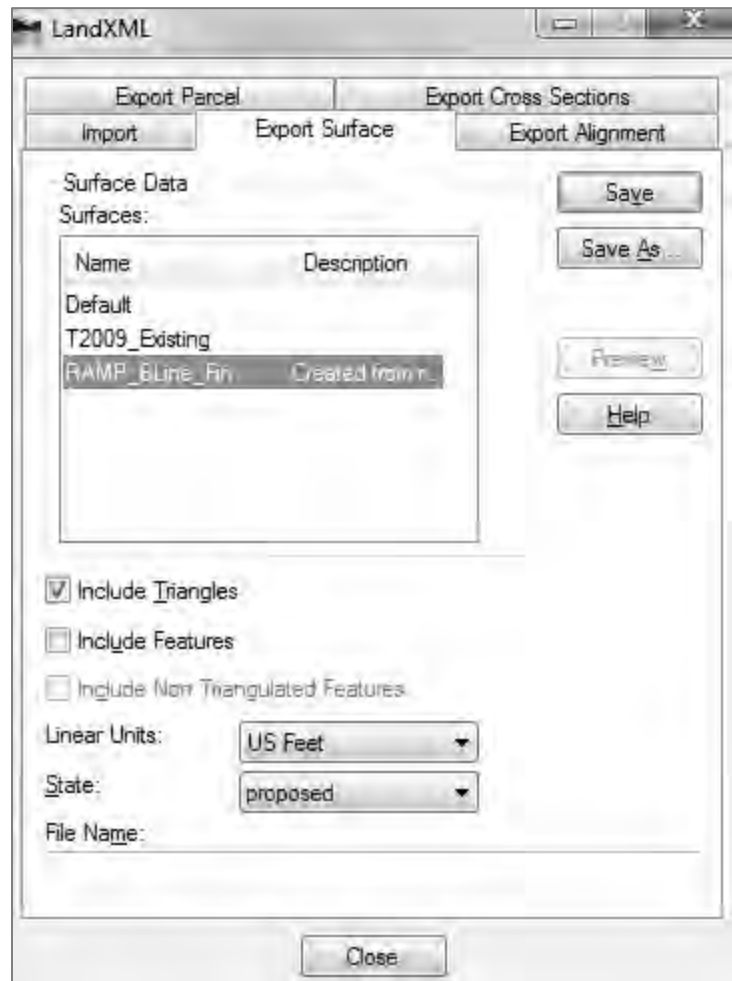
Open an InRoads Surface (DTM) file. Use the **LandXML Translator** to export surface to a LandXML file.

Load the DTM into InRoads

1. Select the *File > Open* command.
2. Set the *File Type* to **Surface (*.dtm)** if not already set to all InRoads file types.
3. Browse and select file to be exported to LandXML file.

Create LandXML File

1. Select the *File > Translators > LandXML Translator* command.
2. Select the *Export Surface* tab.
3. Select the surface.
4. Enable **Include Triangles**.
5. Set *Linear Units* to **US Feet**.
6. Click **Save As**.
The *Save As* dialog opens.
7. Key-in a file name.
8. Browse to the appropriate folder.
9. Click **Save**.



For questions or comments on this tech note, contact your regional CAE Support Coordinator or the WSDOT CAE Help Desk at (360) 709-8013.