

InRoads – Exporting Geometry to LandXML

Cogo Points, Horizontal and Vertical Alignments

Overview

This process exports InRoads geometry data including COGO points, and both horizontal and vertical alignments, to a LandXML file. The LandXML file can be used to import the data into another application or to a survey data collector.

Workflow

Open an InRoads geometry (.alg) file. Use the **LandXML Translator** to select the Cogo points, and horizontal & vertical alignments to create the LandXML file.

Load Geometry Project (.alg) into InRoads

1. Select *File > Open*.
2. Set the *file type* to **Geometry Project (*.alg)**.
3. Browse and select the **Geometry Project (*.alg)** with the alignment to be exported to LandXML file.

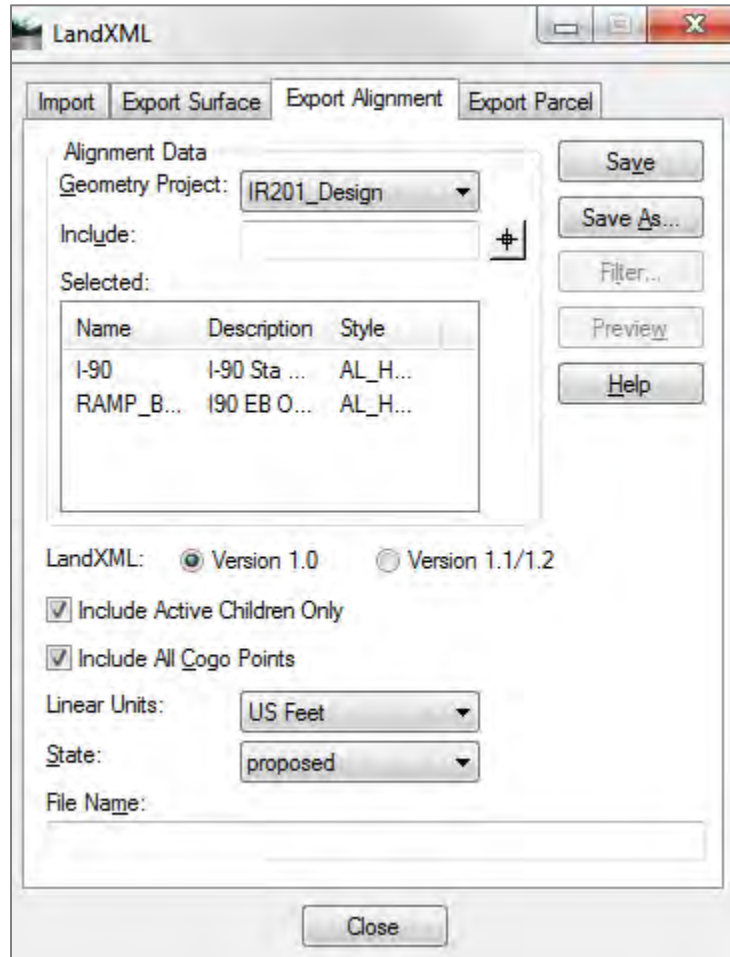
Set Vertical Alignments Active

4. Set the vertical alignment as active for each alignment to be exported.

Create LandXML File

5. Select the *File > Translators > LandXML Translator* command.
6. Select the **Export Alignment** tab.
7. Select the appropriate geometry project.
8. Include the horizontal alignments to be exported.
9. If applicable, enable the **Include Active Children Only** option.
10. If applicable, enable **Include All Cogo Points**.
11. Set Linear Units to **US Feet**.
12. Click **Save As**.
13. The Save As dialog opens.
14. Key in a file name and browse to the appropriate folder.

15. Click **Save**.



For questions or comments on this tech note, contact your regional CAE Support Coordinator or the WSDOT CAE Help Desk at (360) 709-8013.