

MINIMUM LANE CLOSURE TAPER LENGTH = L (feet)										
LANE WIDTH (feet)	Posted Speed (mph)									
	25	30	35	40	45	50	55	60	65	70
10	105	150	205	270	450	500	550	-	-	-
11	115	165	225	295	495	550	605	660	-	-
12	125	180	245	320	540	600	660	720	780	840

MINIMUM SHOULDER TAPER LENGTH = L/3 (feet)										
SHOULDER WIDTH (feet)	Posted Speed (mph)									
	25	30	35	40	45	50	55	60	65	70
8'	40	40	60	90	120	130	150	160	170	190
10'	40	60	90	90	150	170	190	200	220	240

USE A MINIMUM 3 DEVICES TAPER FOR SHOULDER LESS THEN 8'.

SIGN SPACING = X (1)		
FREEWAYS & EXPRESSWAYS	55 / 70 MPH	1500' ±
RURAL HIGHWAYS	60 / 65 MPH	800' ±
RURAL ROADS	45 / 55 MPH	500' ±
RURAL ROADS & URBAN ARTERIALS	35 / 40 MPH	350' ±
RURAL ROADS & URBAN ARTERIALS	25 / 30 MPH	200' ± (2)
RESIDENTIAL & BUSINESS DISTRICTS		
URBAN STREETS	25 MPH OR LESS	100' ± (2)

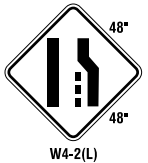
(1) ALL SPACING MAY BE ADJUSTED TO ACCOMMODATE INTERCHANGE RAMP, AT-GRADE INTERSECTIONS AND DRIVEWAYS.
(2) THIS SPACING MAY BE REDUCED IN URBAN AREAS TO FIT ROADWAY CONDITIONS.

BUFFER DATA										
LONGITUDINAL BUFFER SPACE = B										
SPEED (MPH)	25	30	35	40	45	50	55	60	65	70
LENGTH (feet)	155	200	250	305	360	425	495	570	645	730

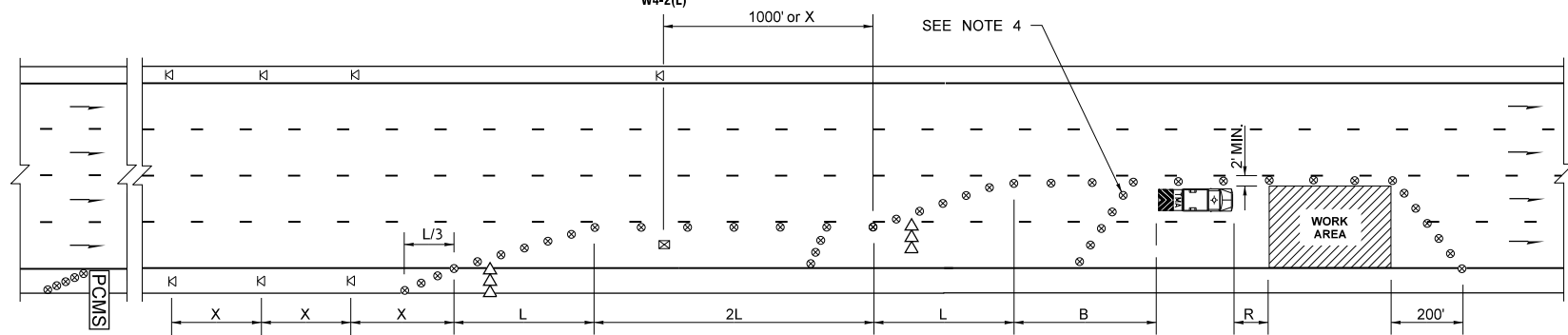
TRANSPORTABLE ATTENUATOR ROLL AHEAD DISTANCE = R					
HOST VEHICLE WEIGHT 9,900 TO 22,000 lbs.			HOST VEHICLE WEIGHT > 22,000 lbs.		
< 45 MPH	45-55 MPH	> 55 MPH	< 45 MPH	45-55 MPH	> 55 MPH
100'	123'	172'	74'	100'	150'

PCMS	
1	2
2 LANES CLOSED AHEAD	WATCH FOR SLOW TRAFFIC
2.0 SEC	2.0 SEC

CHANNELIZATION DEVICE SPACING (feet)		
MPH	TAPER	TANGENT
50/70	40	80
35/45	30	60
25/30	20	40



FIELD LOCATE 1 MILE ± IN ADVANCE OF LANE CLOSURE SIGNING.



LEGEND

- ⊗ TRAFFIC SAFETY DRUM
- ⊠ TEMPORARY SIGN LOCATION
- ⇨ SEQUENTIAL ARROW SIGN
- PORTABLE CHANGEABLE MESSAGE SIGN
- ⊠ TEMPORARY SIGN LOCATION (5' (FT) MOUNTING HEIGHT)

W20-1
 W4-2(L)
 W20-501

- NOTES**
- SEE SPECIAL PROVISIONS FOR WORK HOUR RESTRICTIONS.
 - EXTEND DEVICE TAPER AT L/3 ACROSS SHOULDER.
 - DEVICES SHALL NOT ENCR OACH INTO THE ADJACENT LANES.
 - USE TRANSVERSE DEVICES IN CLOSED LANE EVERY 1000' (FT) (RECOMMENDED).
 - DEVICE SPACING FOR THE DOWNSTREAM TAPER SHALL BE 20' (FT).
 - ALL SIGNS ARE BLACK ON ORANGE.

DOUBLE-LANE CLOSURE FOR MULTI-LANE ROADWAYS

NOT TO SCALE

FILE NAME S:\Design R P& S\4-Standards\2-Plan Sheet Library\01-Published PSL\TC Work Zone Traffic Control\TC-4 Double-Lan Closure for Multi-Lane Roadways\TC-4.dgn	REGION NO. WASH	STATE FED.AID PROJ.NO.										Plot 1
TIME 8:36:32 AM												PLAN REF NO TC4
DATE 1/3/2018												SHEET
PLOTTED BY liddelf												OF
DESIGNED BY												SHEETS
ENTERED BY												
CHECKED BY												
PROJ. ENGR.												
REGIONAL ADM.	REVISION	DATE	BY									TRAFFIC CONTROL PLAN

