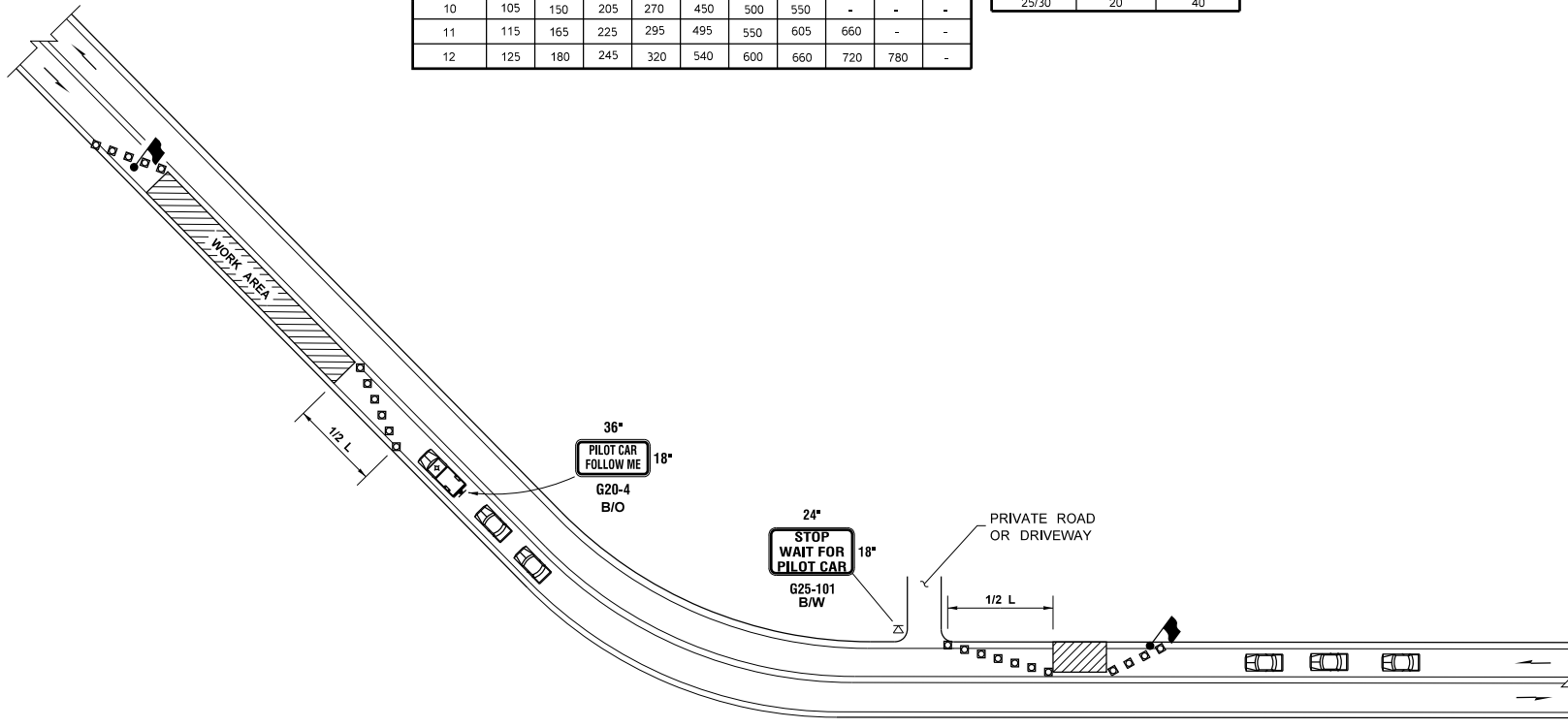


LANE WIDTH (feet)	MINIMUM TAPER LENGTH = L (feet)									
	Posted Speed (mph)									
	25	30	35	40	45	50	55	60	65	70
10	105	150	205	270	450	500	550	-	-	-
11	115	165	225	295	495	550	605	660	-	-
12	125	180	245	320	540	600	660	720	780	-

CHANNELIZATION DEVICE SPACING (feet)		
MPH	TAPER	TANGENT
50/65	40	80
35/45	30	60
25/30	20	40



- LEGEND**
- FLAGGING STATION
 - TEMPORARY SIGN LOCATION
 - CHANNELIZING DEVICES
 - PILOT VEHICLE
 - MOTORIST VEHICLE

- NOTES**
- REFER TO SHEET TC1 FOR ADDITIONAL SIGNING AND FLAGGING DETAILS NOT SHOWN.
 - CHANNELIZING DEVICES ARE RECOMMENDED ALONG CENTERLINE TO SEPARATE TRAFFIC FROM WORK OPERATION. DEVICES ARE REQUIRED AT TAPERS TO SHIFT TRAFFIC MOVEMENT BETWEEN LANES AND TO PROTECT FLAGGING STATIONS.
 - SIGN G25-101 IS RECOMMENDED FOR NON-STOP SIGN CONTROLLED APPROACHES SUCH AS PRIVATE ROADS AND DRIVEWAYS. THIS SIGN IS NOT REQUIRED TO BE ALUMINUM SUBSTRATE AND CAN BE MADE OF ALTERNATIVE MATERIALS.

PILOT CAR OPERATION

NOT TO SCALE

FILE NAME S:\Design R P& S\4-Standards\2-Plan Sheet Library\01-Published PSL\TC Work Zone Traffic Control\TC-2 Pilot Car Operation\TC-2.dgn		REGION NO.		STATE	FED.AID PROJ.NO.	DATE		PLOT 1	
TIME 11:53:53 AM		WASH				PLAN REF NO TC2		SHEET	
DATE 1/2/2018		JOB NUMBER		LOCATION NO.		OF		SHEETS	
PLOTTED BY liddelf		CONTRACT NO.		DATE		P.E. STAMP BOX		TRAFFIC CONTROL PLAN	
DESIGNED BY		DATE		BY		DATE		SHEETS	
ENTERED BY		REVISION		DATE		P.E. STAMP BOX			
CHECKED BY									
PROJ. ENGR.									
REGIONAL ADM.									