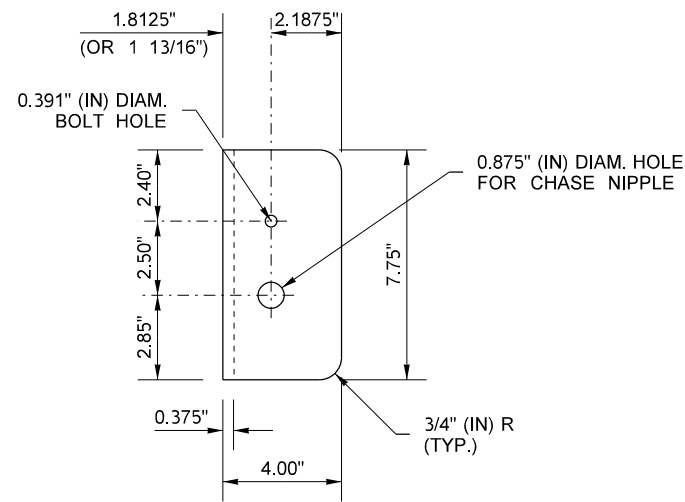
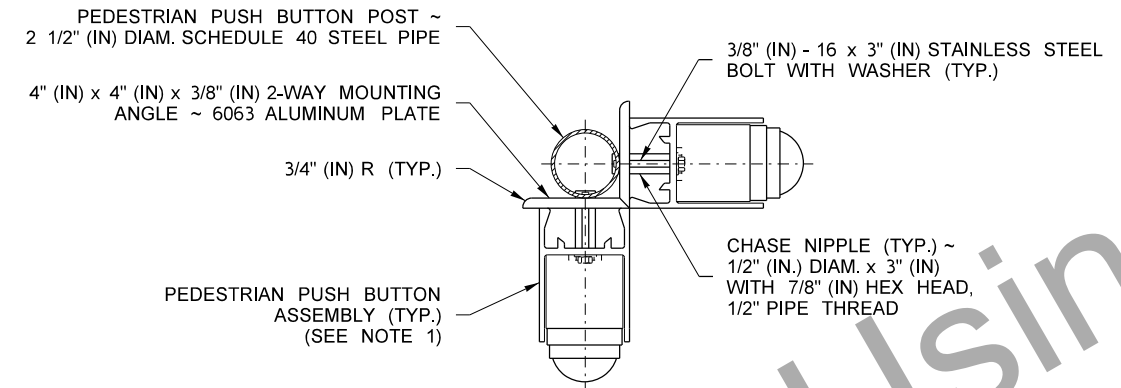


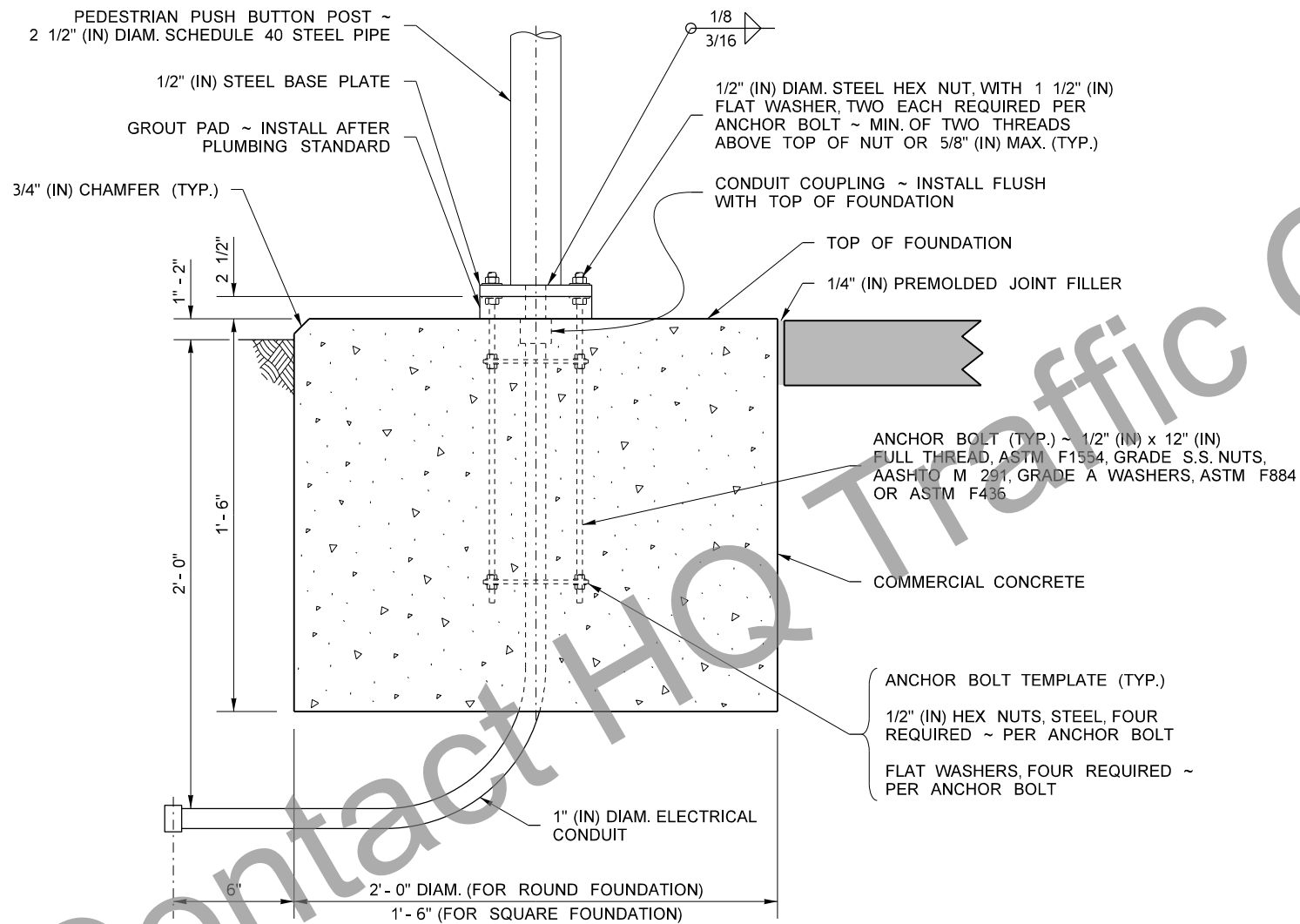
POST DETAIL



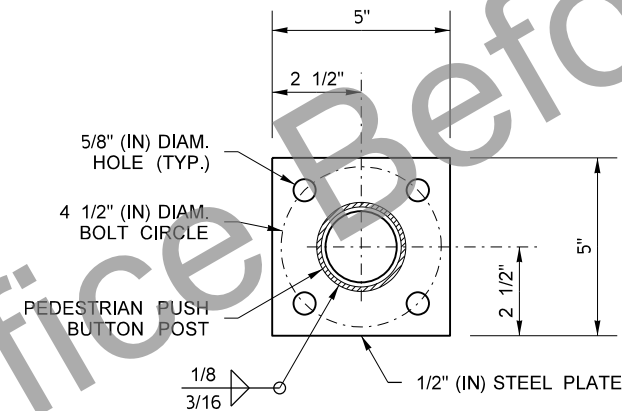
**2-WAY MOUNTING ANGLE DETAIL
MIRROR IMAGE FOR RIGHT SIDE
0.375" (IN) THICK, 6063 ALUMINUM PLATE**



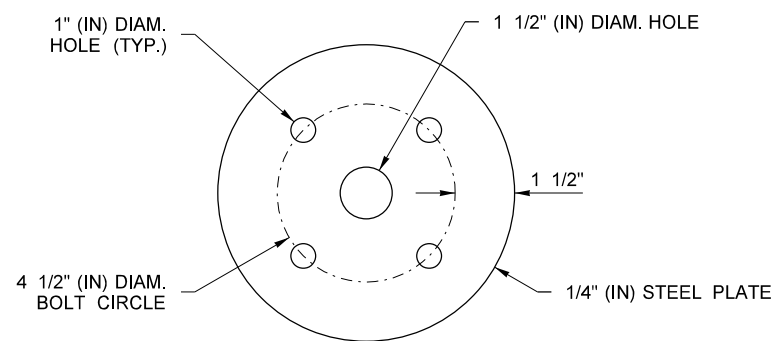
**2-WAY PEDESTRIAN
PUSH BUTTON DETAIL**



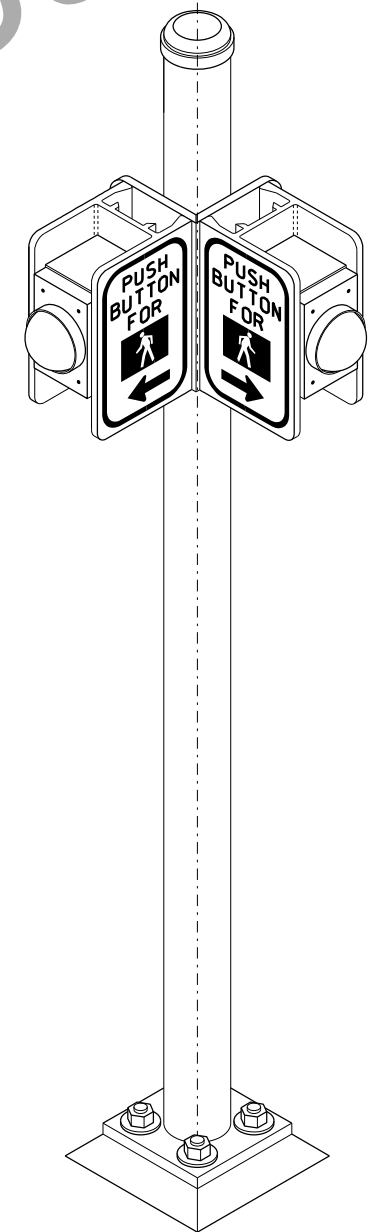
FOUNDATION DETAIL



BASE PLATE DETAIL



ANCHOR BOLT TEMPLATE



**ISOMETRIC VIEW
OPTIONAL 2-WAY PEDESTRIAN
PUSH BUTTON POST**

FILE NAME	S:\Design R P& S\4-Standards\2-Plan Sheet Library\01-Published PSL(IS) Illumination, Signals, and ITS(IS-1) Pedestrian Push Button Post and Foundation\IS-1.dgn			
TIME	1:32:23 PM	REGION NO.	STATE	FED.AID PROJ.NO.
DATE	10/6/2014		WASH	
PLOTTED BY	FletcCo	JOB NUMBER		
DESIGNED BY		CONTRACT NO.		LOCATION NO.
ENTERED BY				
CHECKED BY				
PROJ. ENGR.				
REGIONAL ADM.	REVISION	DATE	BY	DATE



**PEDESTRIAN PUSH BUTTON (PPB)
POST AND FOUNDATION**

Plot 2
PLAN REF NO
IS-1
SHEET
2
OF
2
SHEETS