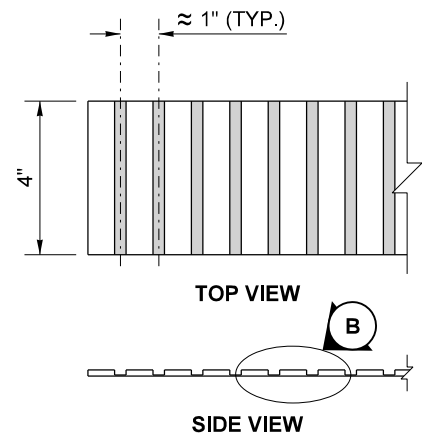


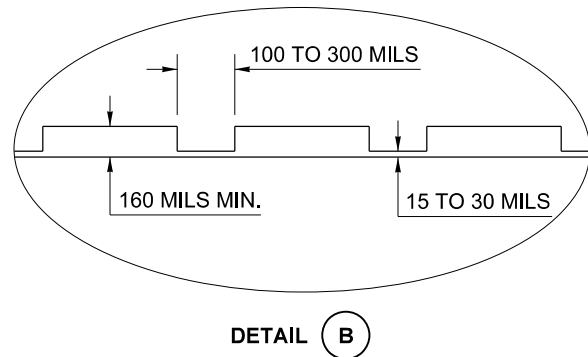
**PROFILED PLASTIC**  
(BROKEN LINE)

FOR: CENTERLINE & LANE LINE ~ W = 4"  
NO-PASS LINE & TWO-WAY LEFT-TURN CENTERLINE ~ W = 4"  
REVERSIBLE LANE LINE ~ W = 4"  
WIDE BROKEN LANE LINE ~ W = 8"



**EMBOSSSED PLASTIC**  
(SOLID OR BROKEN LINE)

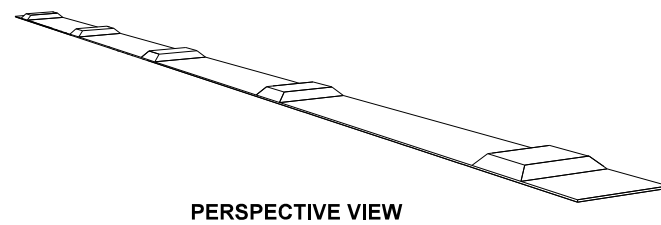
FOR: CENTERLINE & LANE LINE  
NO-PASS LINE & TWO-WAY LEFT-TURN CENTERLINE  
REVERSIBLE LANE LINE  
DOUBLE CENTERLINE & DOUBLE LANE LINE  
EDGE LINE & SOLID LANE LINE



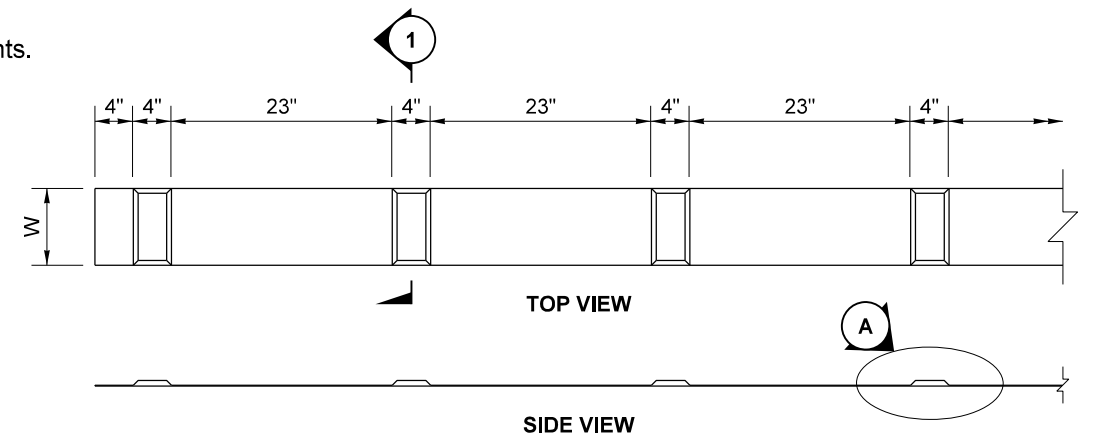
DETAIL B

**GENERAL NOTE**

See Standard Plan M-20.10 for pattern and color requirements.

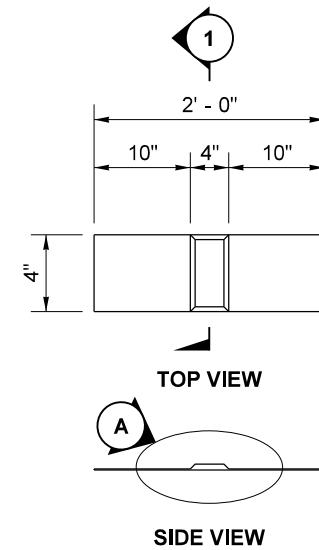


PERSPECTIVE VIEW

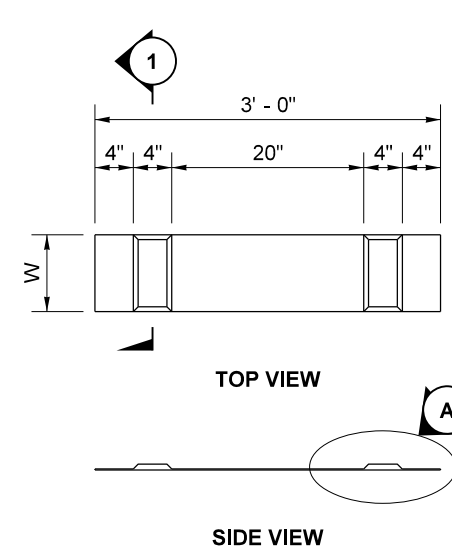


**PROFILED PLASTIC**  
(SOLID LINE)

FOR: NO-PASS LINE ~ W = 4"  
TWO-WAY LEFT-TURN CENTERLINE ~ W = 4"  
DOUBLE CENTERLINE & DOUBLE LANE LINE ~ W = 4"  
EDGE LINE & SOLID LANE LINE ~ W = 4"  
WIDE LANE LINE & WIDE LINE ~ W = 8"  
DOUBLE WIDE LANE LINE ~ W = 8"  
BARRIER CENTERLINE ~ W = 20"

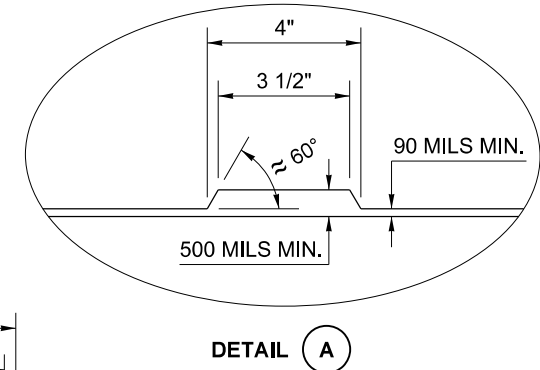


DOTTED EXTENSION LINE

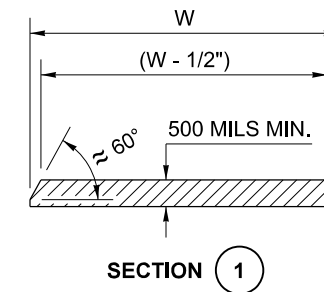


DOTTED LANE LINE ~ W = 4"  
WIDE DOTTED LANE LINE ~ W = 8"

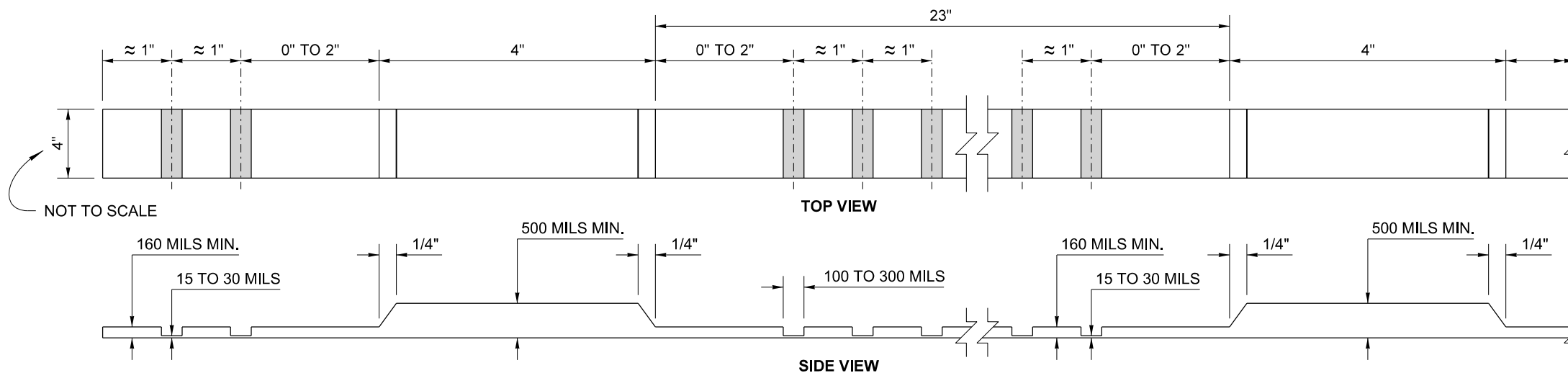
**PROFILED PLASTIC**  
(BROKEN LINE)



DETAIL A



SECTION 1



**PROFILED EMBOSSSED PLASTIC**  
(SOLID OR BROKEN LINE)

FOR: CENTERLINE & LANE LINE  
NO-PASS LINE  
TWO-WAY LEFT-TURN CENTERLINE  
REVERSIBLE LANE LINE  
DOUBLE CENTERLINE & DOUBLE LANE LINE  
EDGE LINE & SOLID LANE LINE

**PROFILED AND EMBOSSSED PLASTIC LINES**

**STANDARD PLAN M-20.20-02**

SHEET 1 OF 1 SHEET

APPROVED FOR PUBLICATION

STATE DESIGN ENGINEER  
Washington State Department of Transportation