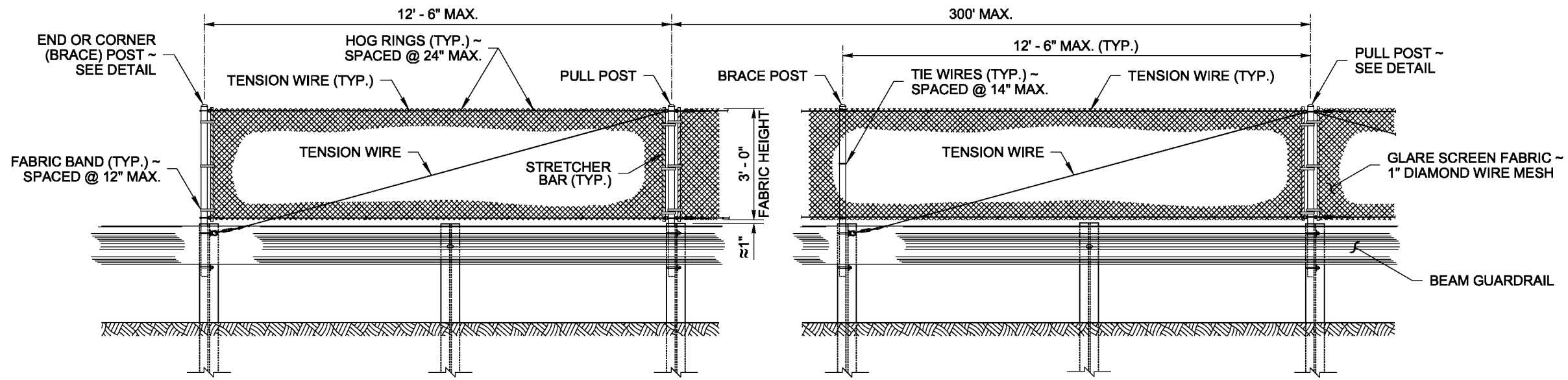


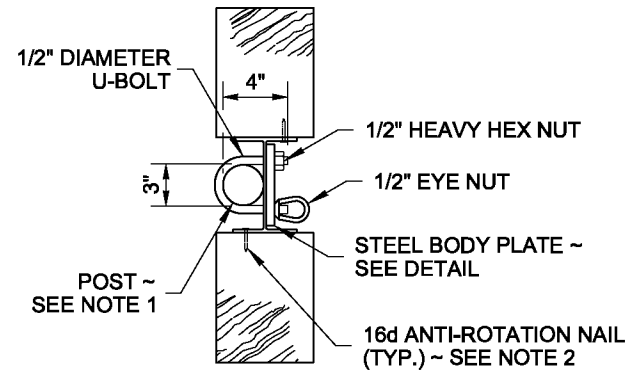
DRAWN BY: LISA CYFORD



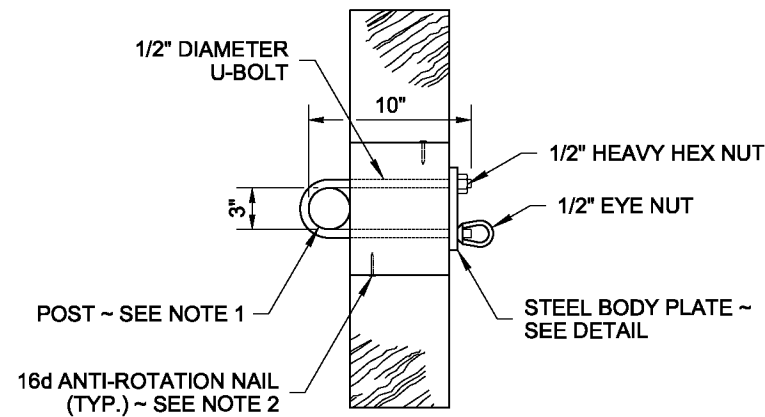
ELEVATION VIEW

NOTES

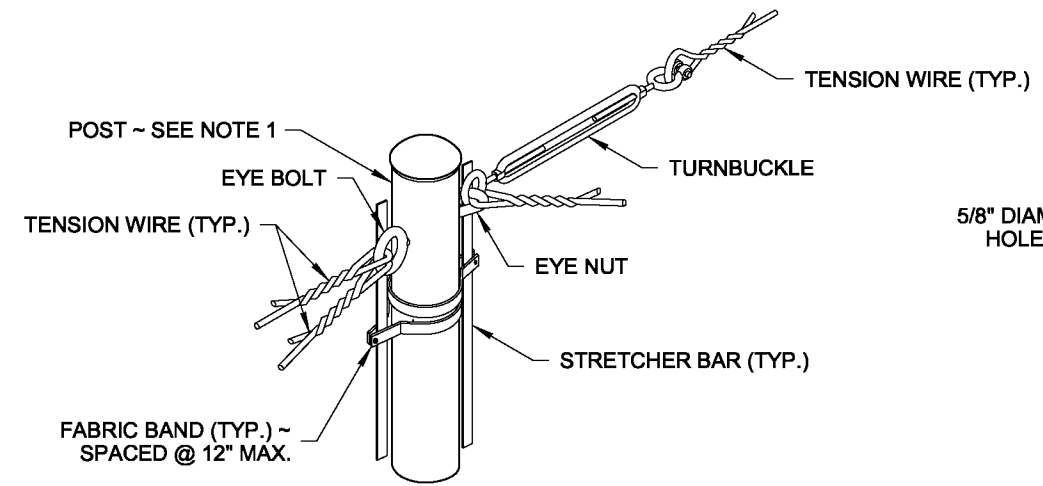
1. All glare screen posts shall be 2 1/2" I.D. galvanized steel.
2. Wood blocks shown. Blocks of alternate material may be used. Wood blocks shall be toe-nailed to post with 16d galvanized nails to prevent block rotation. See Standard Specification 9-16.3(2).
3. Attach blocks to steel posts using bolt holes on approaching traffic side of post web.
4. See Standard Plan C-1b for posts and wood block details.



VIEW (B)

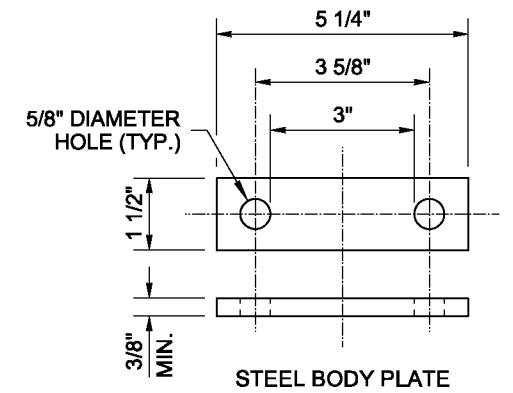


VIEW (B)

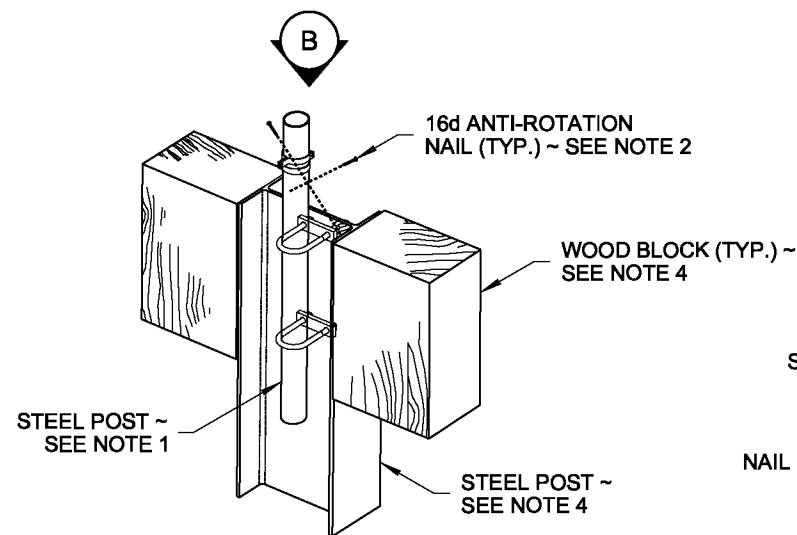


PULL POST (WITHIN RUN)

DETAIL (C)

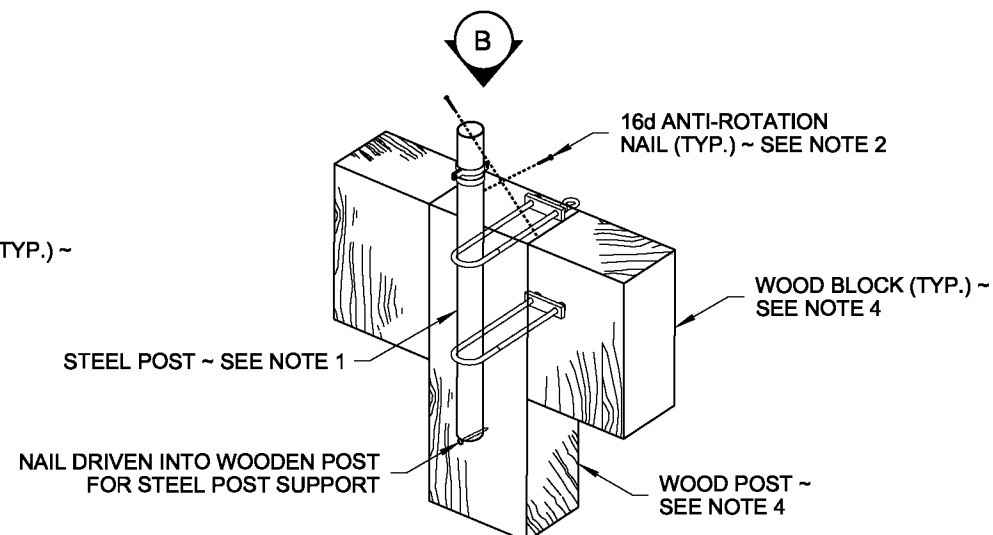


STEEL BODY PLATE



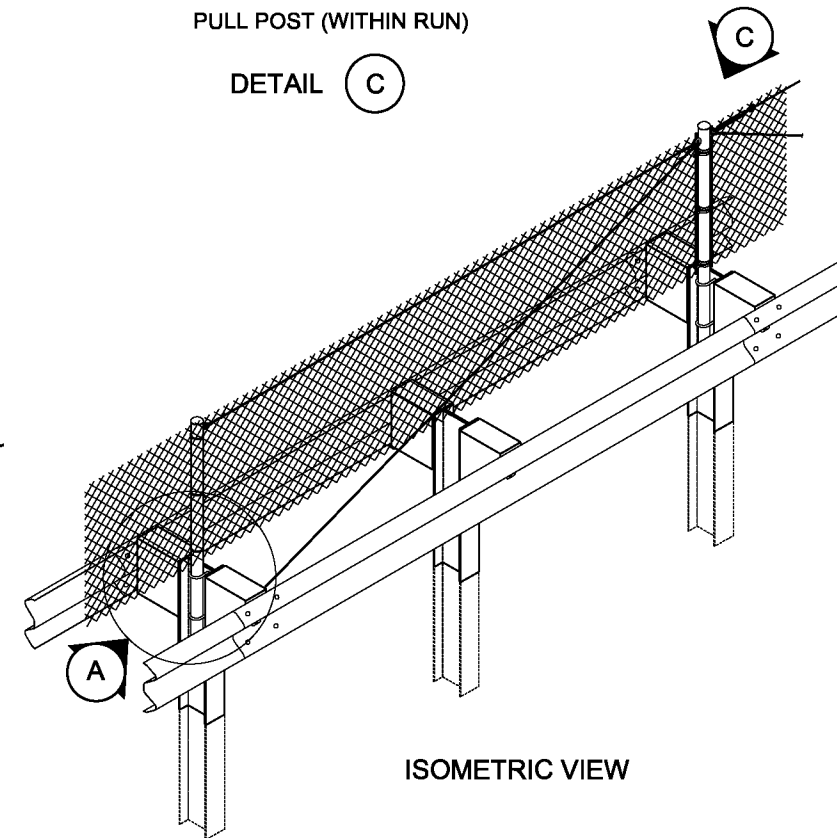
END OR CORNER (BRACE) POST WITH STEEL POST

DETAIL (A)

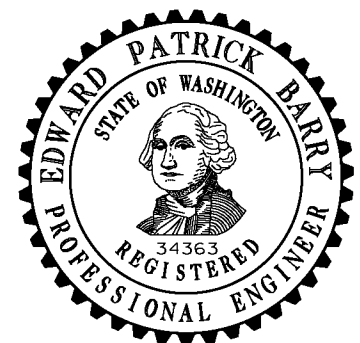


END OR CORNER (BRACE) POST WITH EXISTING WOOD POST

DETAIL (A)



ISOMETRIC VIEW



NOTE: THIS PLAN IS NOT A LEGAL ENGINEERING DOCUMENT UNTIL ELECTRONICALLY SIGNED BY THE ENGINEER AND APPROVED FOR PUBLICATION. IT IS TO BE FILED AT THE WASHINGTON STATE DEPARTMENT OF TRANSPORTATION. A COPY MAY BE OBTAINED UPON REQUEST.

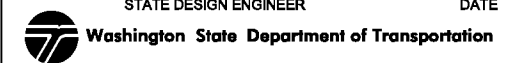
GLARE SCREEN TYPE 1 DESIGN A

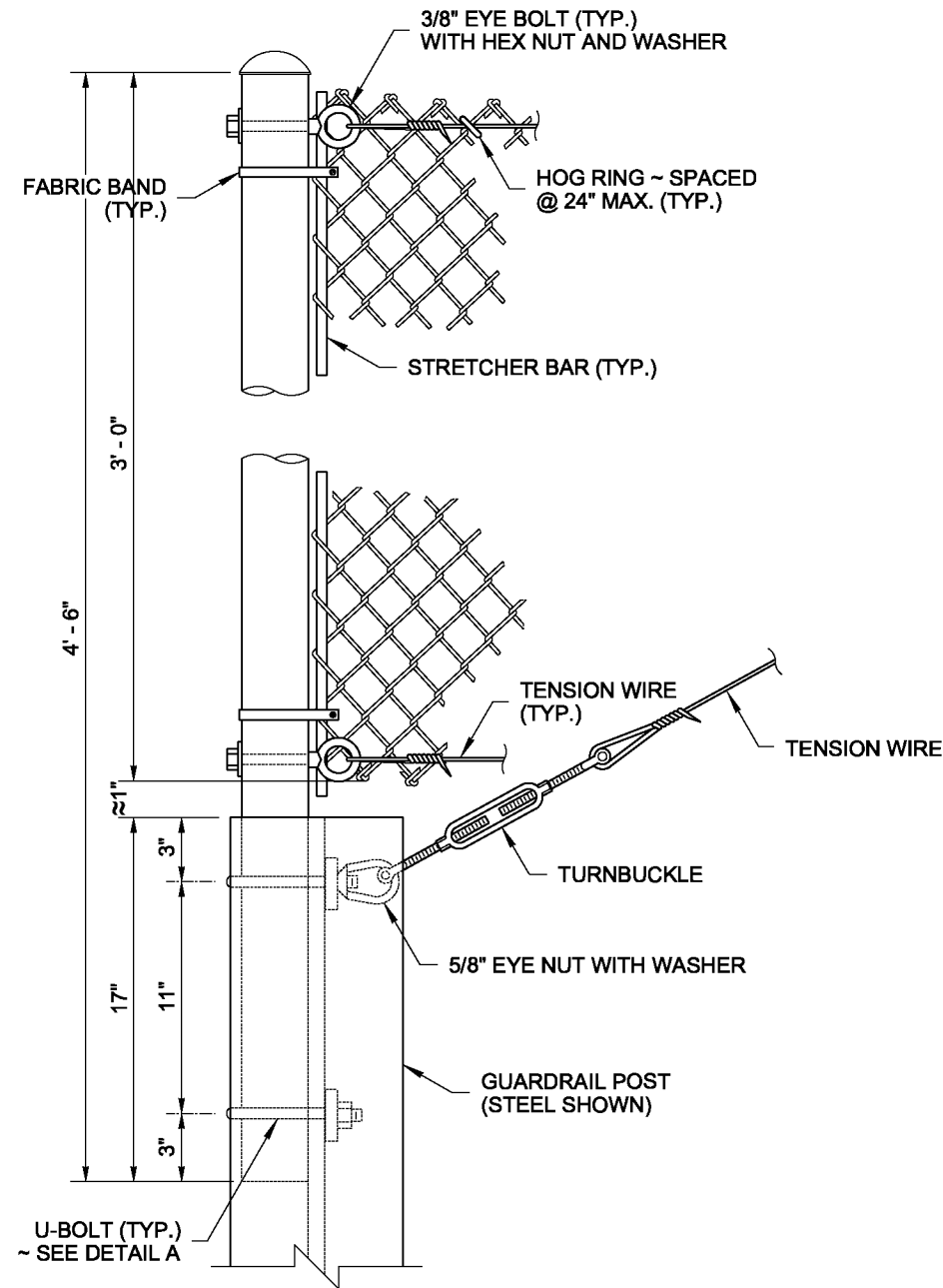
STANDARD PLAN L-40.10-02

SHEET 1 OF 2 SHEETS

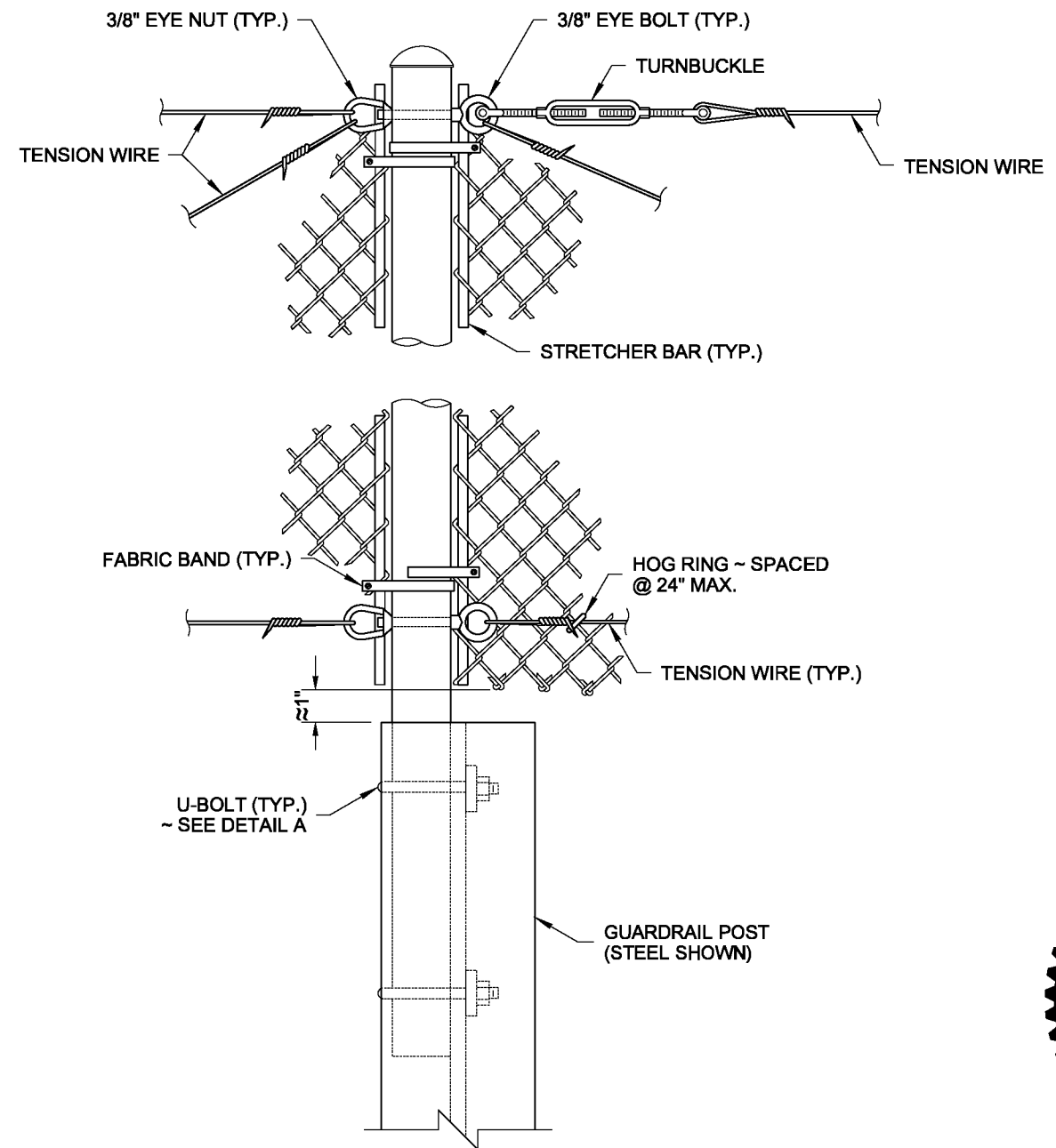
APPROVED FOR PUBLICATION

Pasco Bakotich III 06/21/12
STATE DESIGN ENGINEER DATE

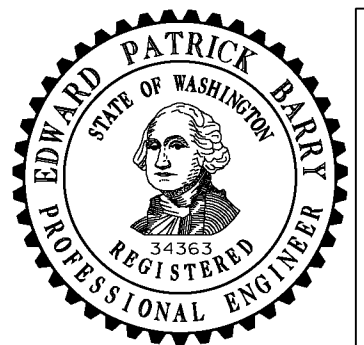




END OR CORNER (BRACE) POST DETAIL



PULL POST (WITHIN RUN) DETAIL



NOTE: THIS PLAN IS NOT A LEGAL ENGINEERING DOCUMENT UNTIL ELECTRONICALLY SIGNED BY THE ENGINEER AND APPROVED FOR PUBLICATION. IT MUST BE FILED AT THE WASHINGTON STATE DEPARTMENT OF TRANSPORTATION. A COPY MAY BE OBTAINED UPON REQUEST.

**GLARE SCREEN TYPE 1
DESIGN A**

STANDARD PLAN L-40.10-02

SHEET 2 OF 2 SHEETS

APPROVED FOR PUBLICATION

Pasco Bakotich III 06/21/12

STATE DESIGN ENGINEER DATE

