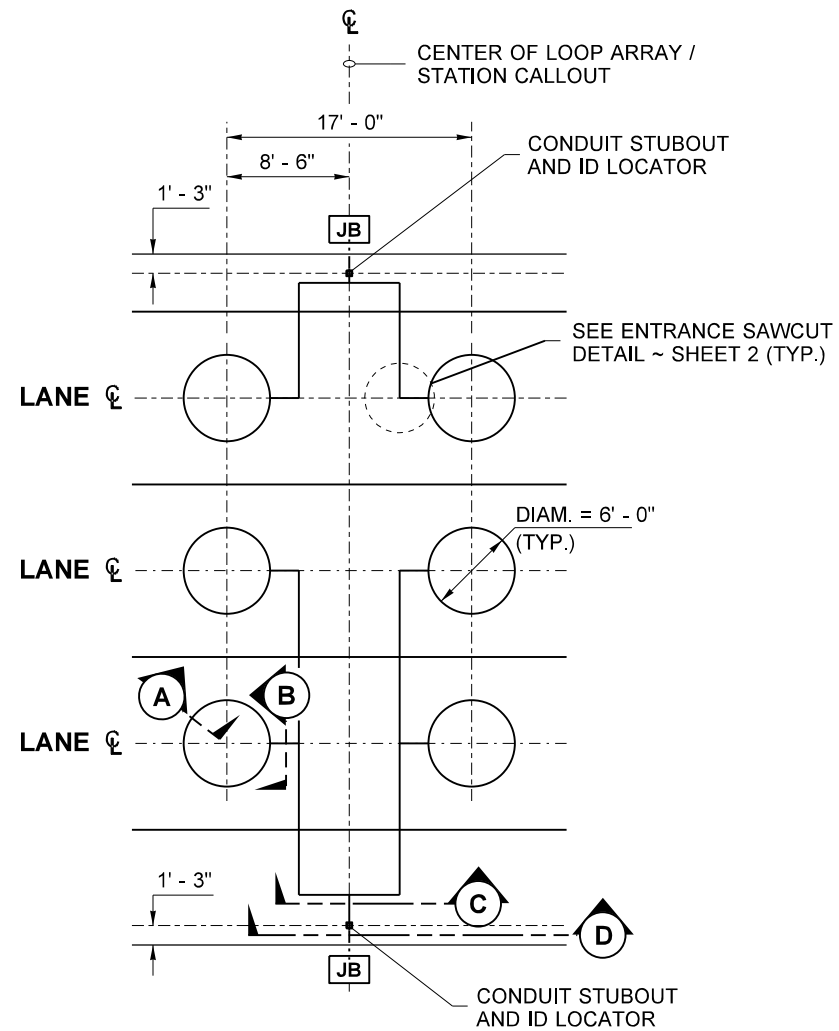
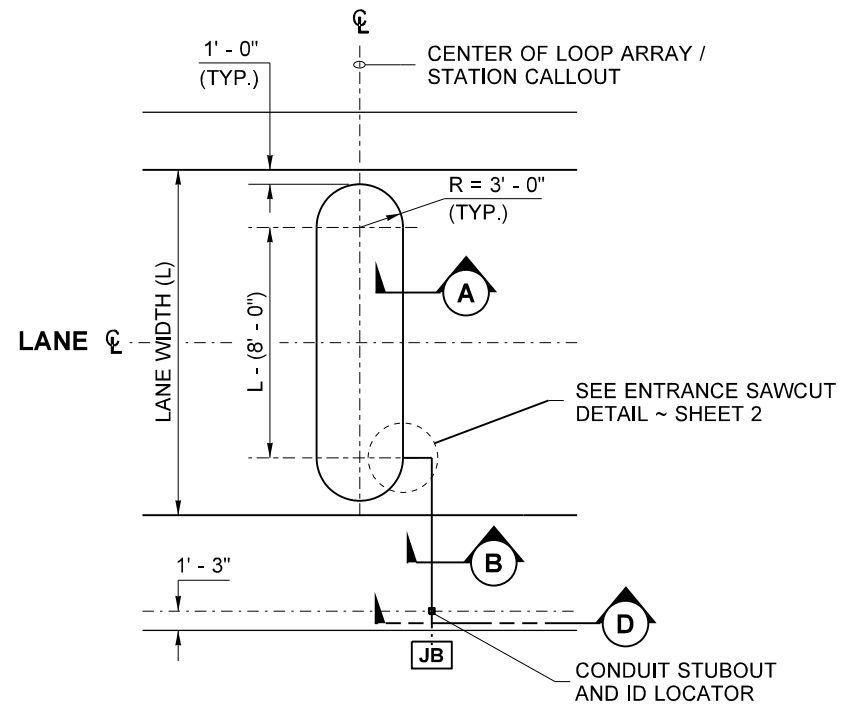


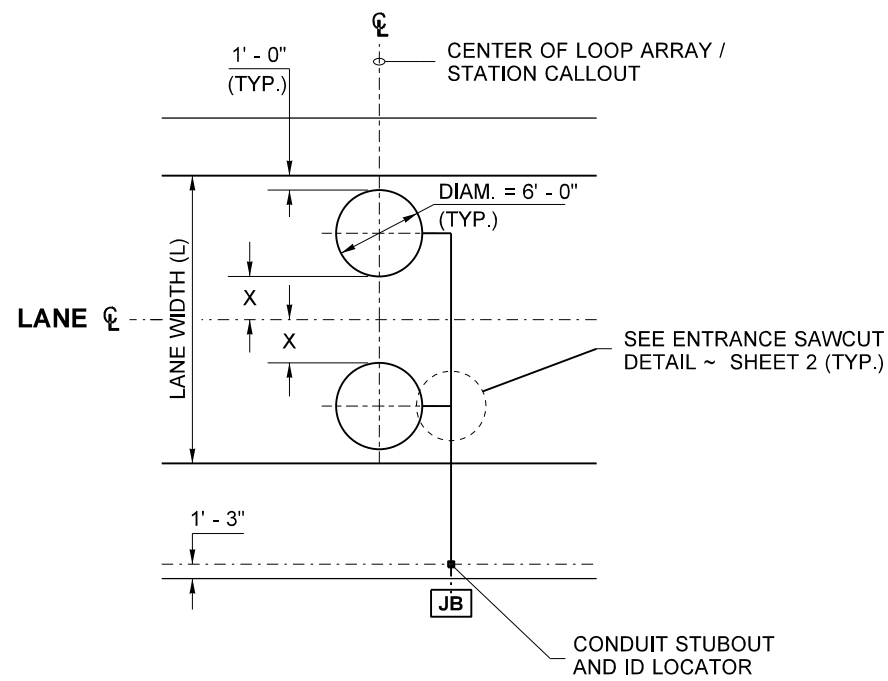
**TYPE R1**



**TYPE R1S  
SPEED LOOPS**



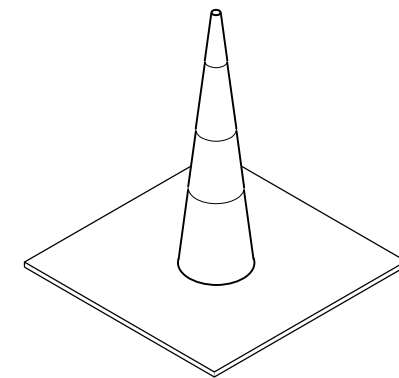
**TYPE R1W  
WIDE SINGLE LANE**



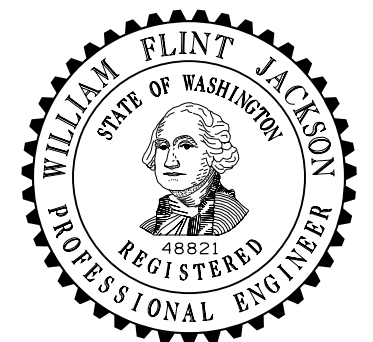
**TYPE R1WA**  
L = 20' - 0" MAX.  
X = 3' - 0" MAX.

**NOTES**

1. For an odd number of lanes, the higher number of loops shall be cut to the right side of the roadway (example: 1 left and 2 right), unless the left-most lane is an HOV lane, in which case the higher number of loops shall be cut to the left side of the roadway.
2. Square loops may be used in place of round loops - see **Standard Plan J-50.11** for square saw cut details.
3. For installation Notes and Details, see **Standard Plan J-50.15**.
4. For Sections A, B, C or D, see **Standard Plan J-50.15**.



**RUBBER LOOP ID LOCATER**  
3.5" SQUARE X 4" TALL

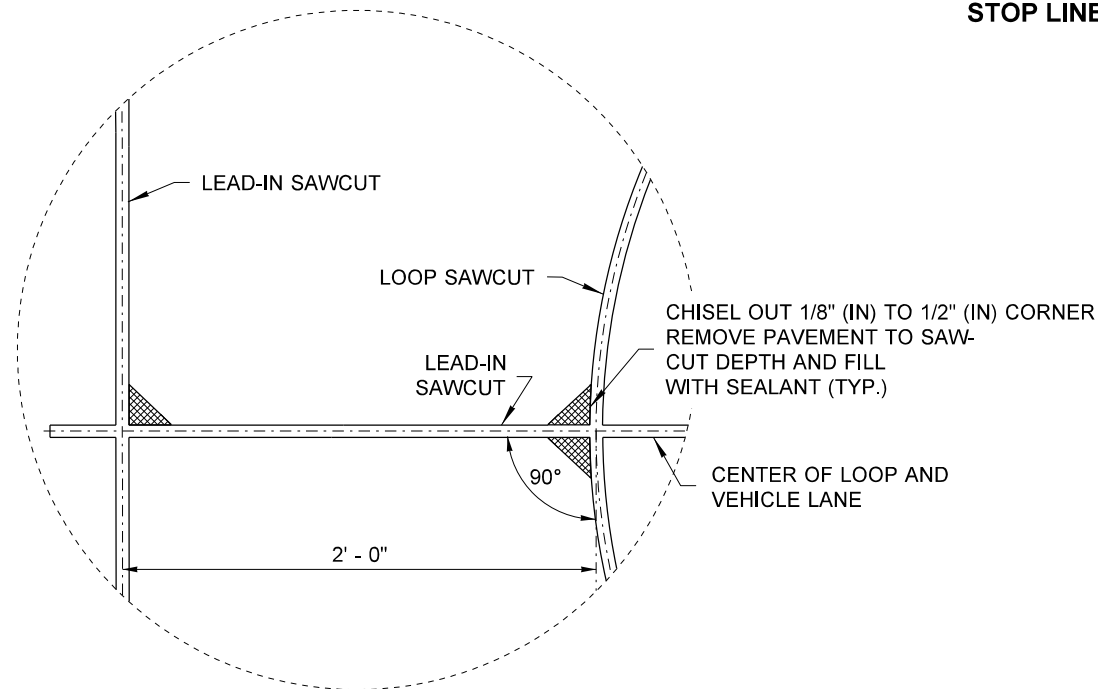
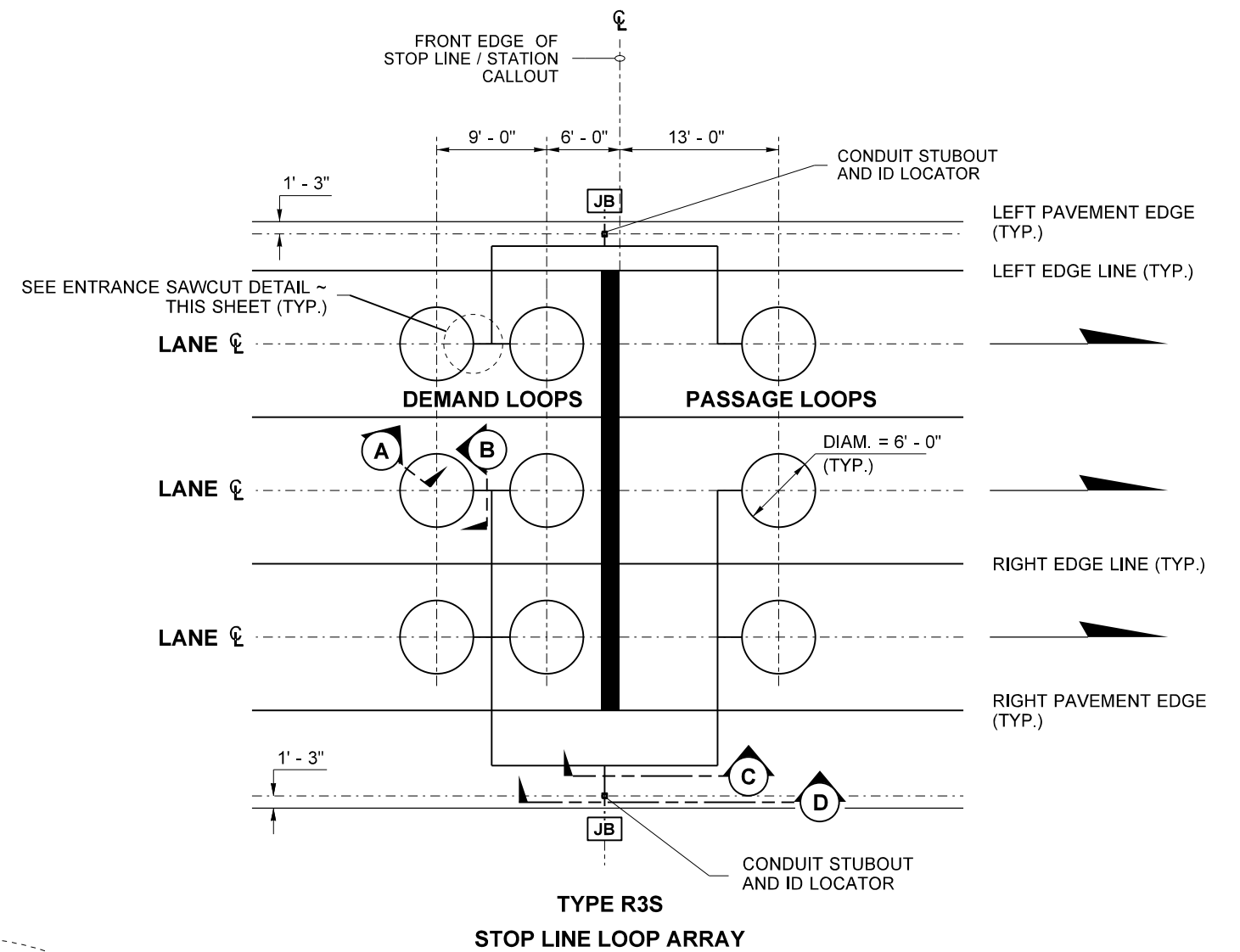
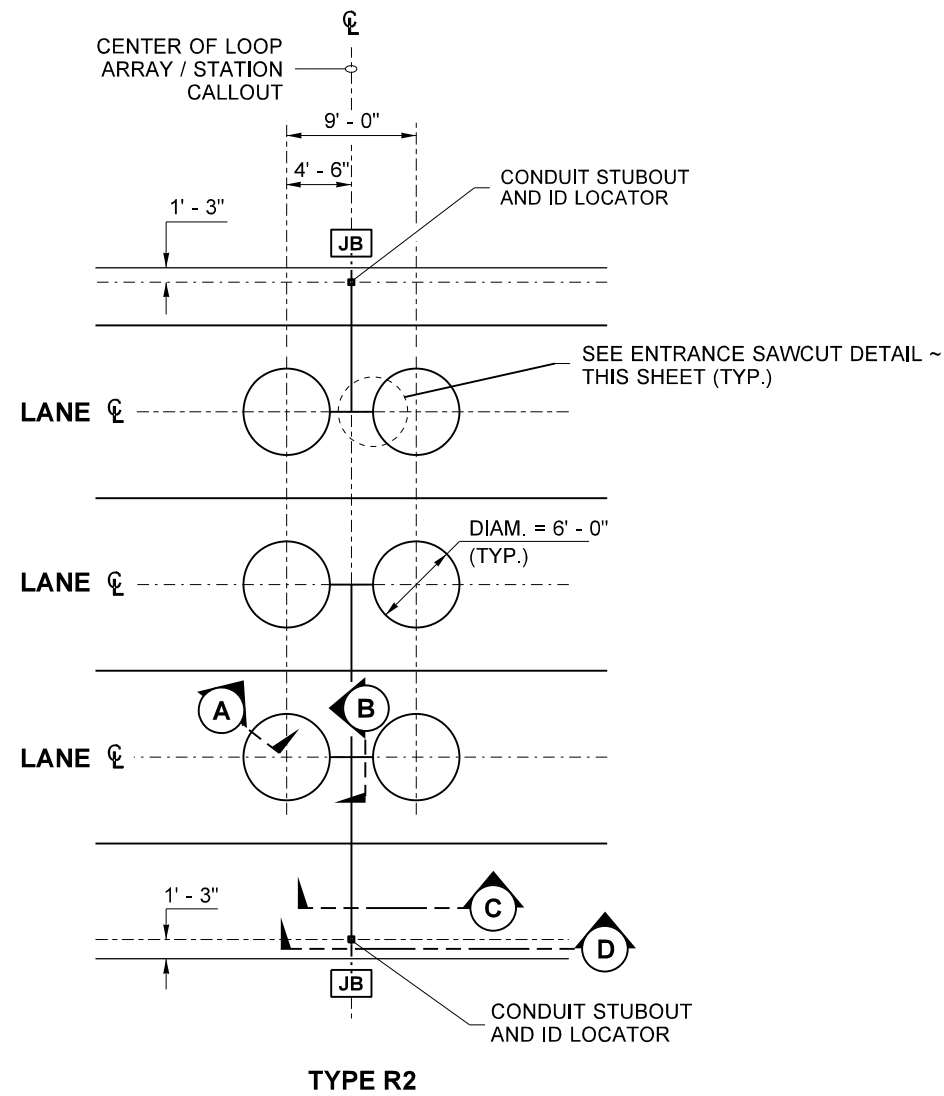


**METERING AND DATA  
INDUCTION LOOPS**  
**STANDARD PLAN J-50.13-00**

SHEET 1 OF 2 SHEETS

APPROVED FOR PUBLICATION

STATE DESIGN ENGINEER  
Washington State Department of Transportation



**ENTRANCE SAWCUT DETAIL**



**METERING AND DATA  
INDUCTION LOOPS  
STANDARD PLAN J-50.13-00**

SHEET 2 OF 2 SHEETS

APPROVED FOR PUBLICATION

STATE DESIGN ENGINEER  
Washington State Department of Transportation