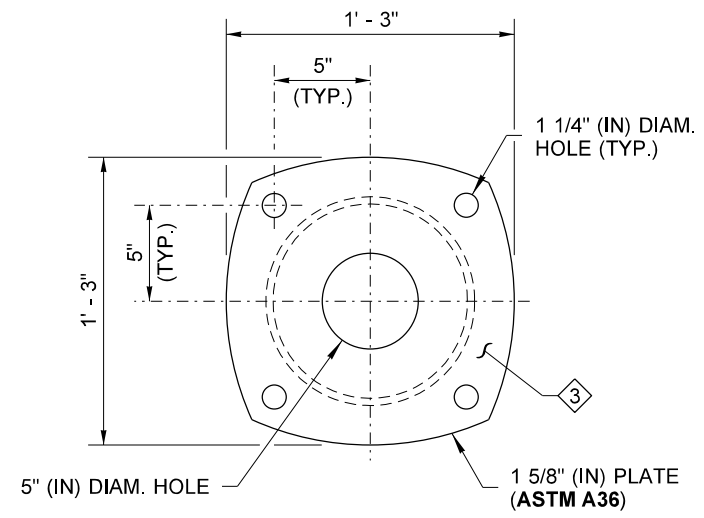
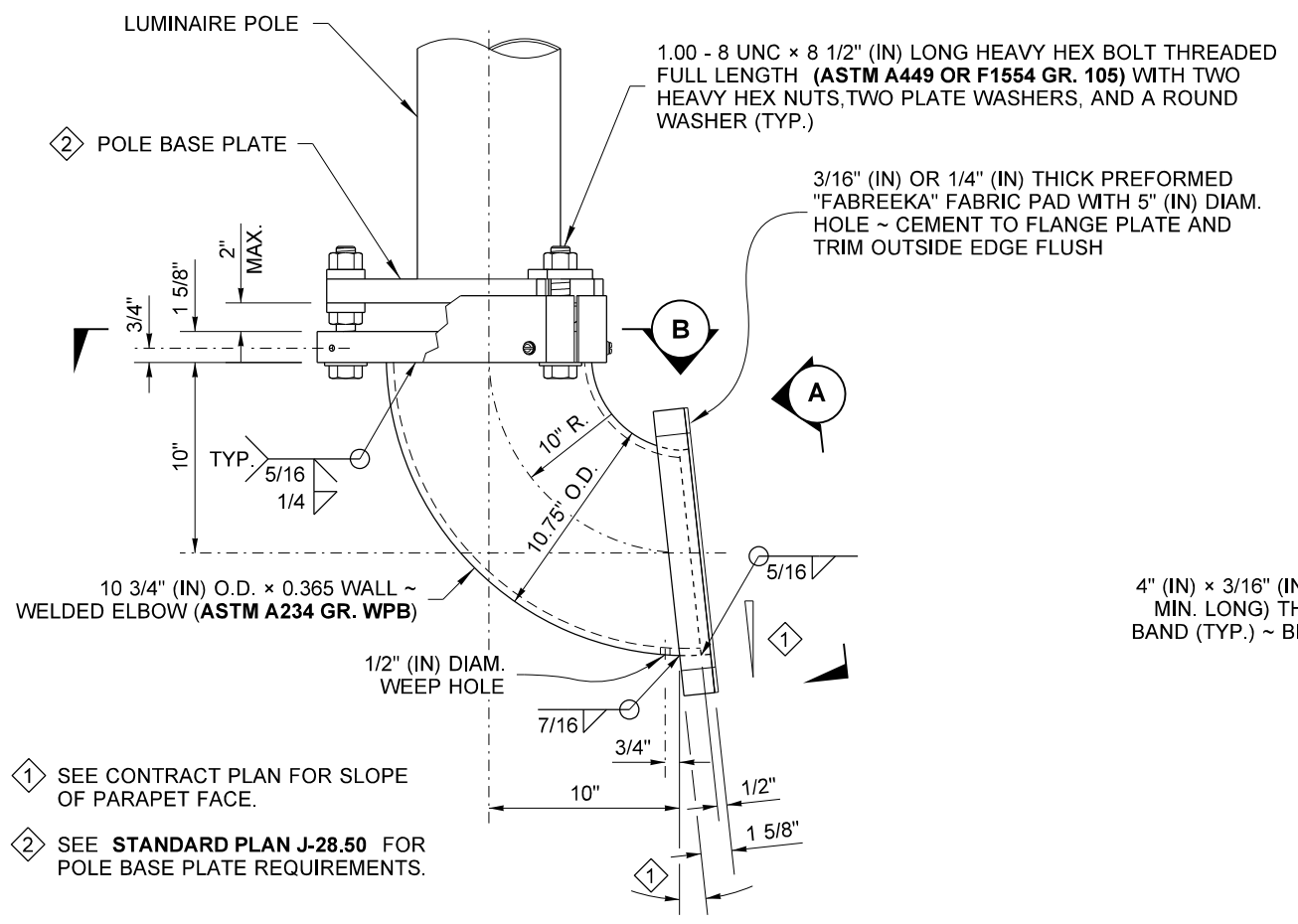


DRAWN BY: FERN LIDDELL



VIEW A

3 THE FACE SHALL BE PLANE AFTER FABRICATION, TO PROVIDE A SEAL BETWEEN THE BARRIER AND THE ELBOW.



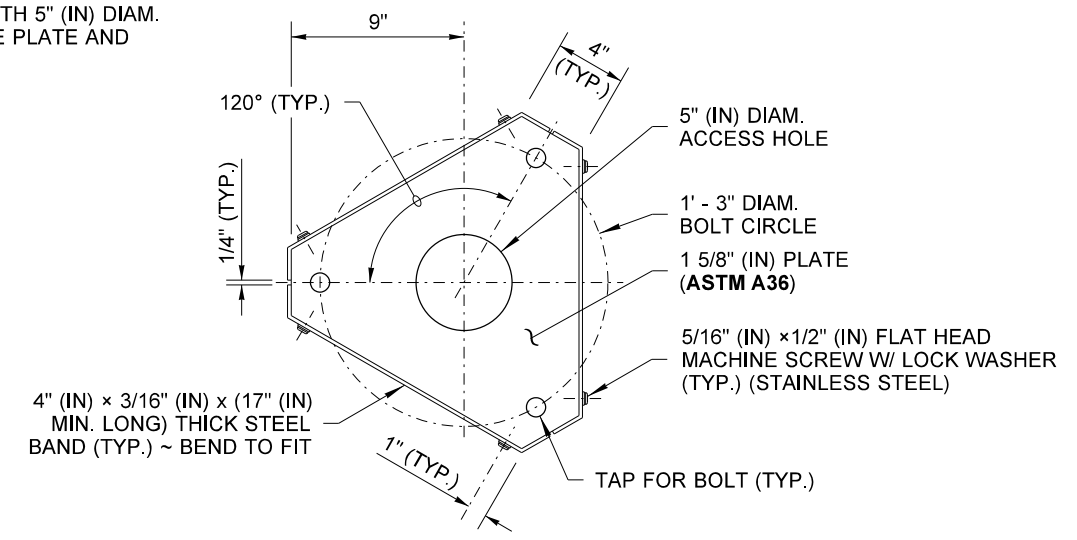
STEEL LIGHT STANDARD ELBOW DETAIL

FOR LUMINAIRE POLES WITH SINGLE MAST ARM 12' - 0" OR LESS AND DOUBLE MAST ARMS 8' - 0" OR LESS, MOUNTED ON BRIDGE OR RETAINING WALLS.

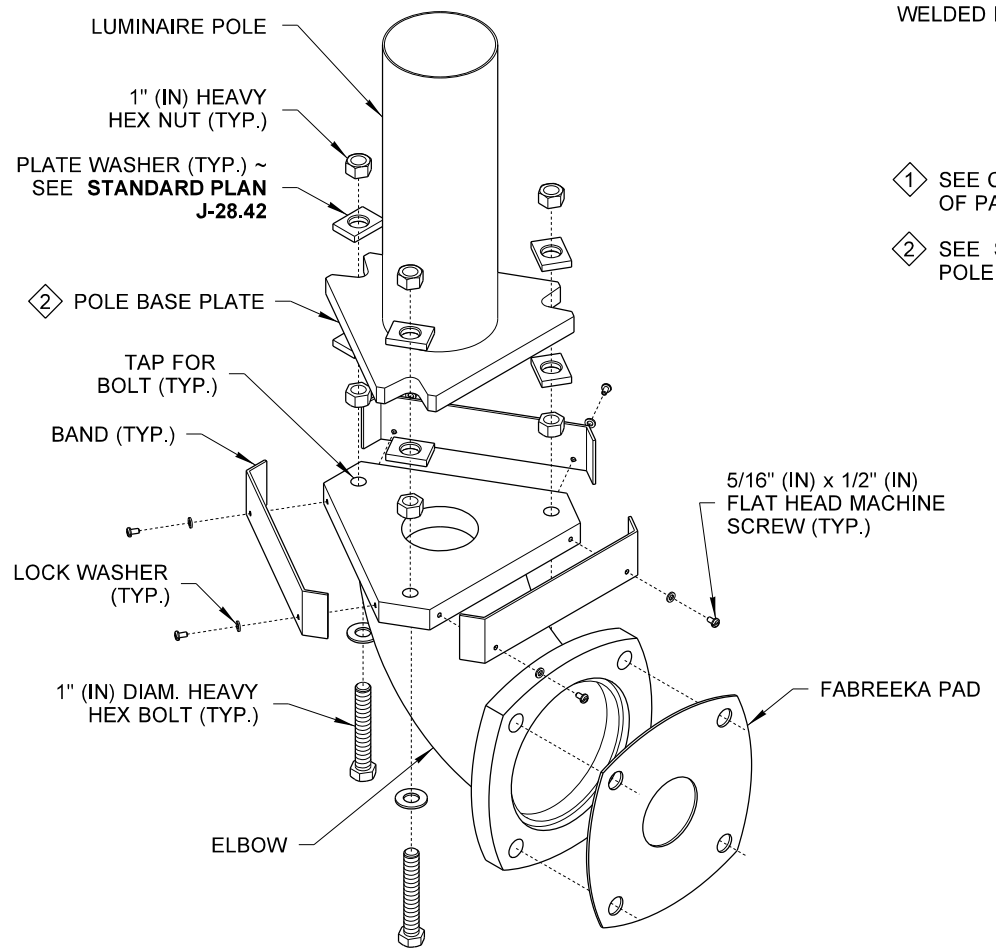
- 1 SEE CONTRACT PLAN FOR SLOPE OF PARAPET FACE.
- 2 SEE STANDARD PLAN J-28.50 FOR POLE BASE PLATE REQUIREMENTS.

NOTES

1. Galvanize the Elbow Assembly after fabrication according to **AASHTO M 111**. All bolts, rods and related hardware shall be galvanized after fabrication per **ASTM F2329**.
2. See **Standard Plan J-28.50** for Pole Base and Hand Hole details.
3. The presence of pedestrian railing shall be verified prior to light standard fabrication. When pedestrian railing is present or to be installed, locate hand hole as detailed in the Bridge Pedestrian Barrier details.
4. See **Standard Plan J-28.70** for further wiring details.



SECTION B



EXPLODED ISOMETRIC VIEW

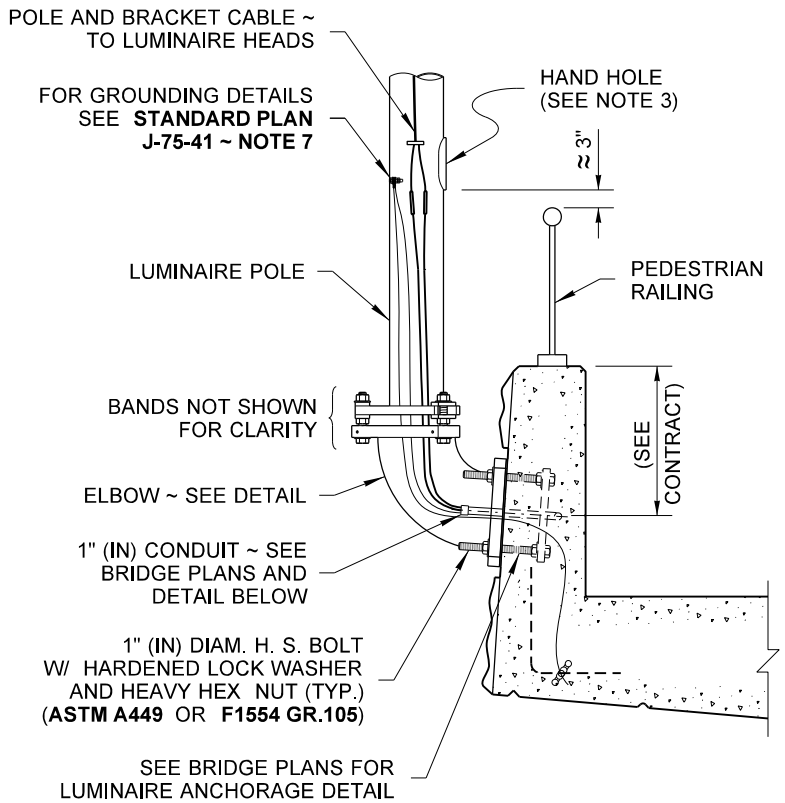


STEEL LIGHT STANDARD ELBOW MOUNTING ON BRIDGE & RETAINING WALL STANDARD PLAN J-28.45-03

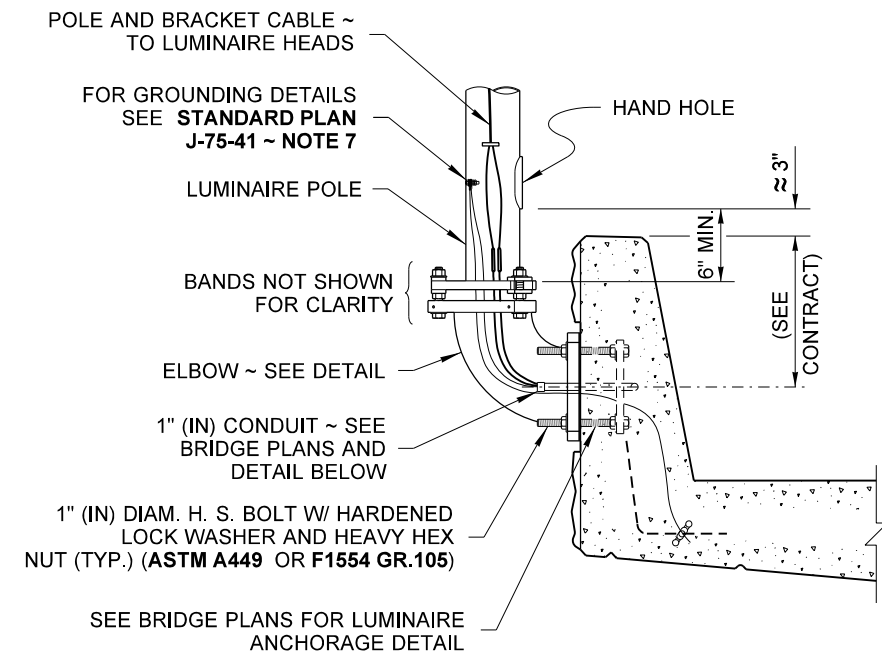
SHEET 1 OF 2 SHEETS

APPROVED FOR PUBLICATION

DRAWN BY: FERN LIDDELL

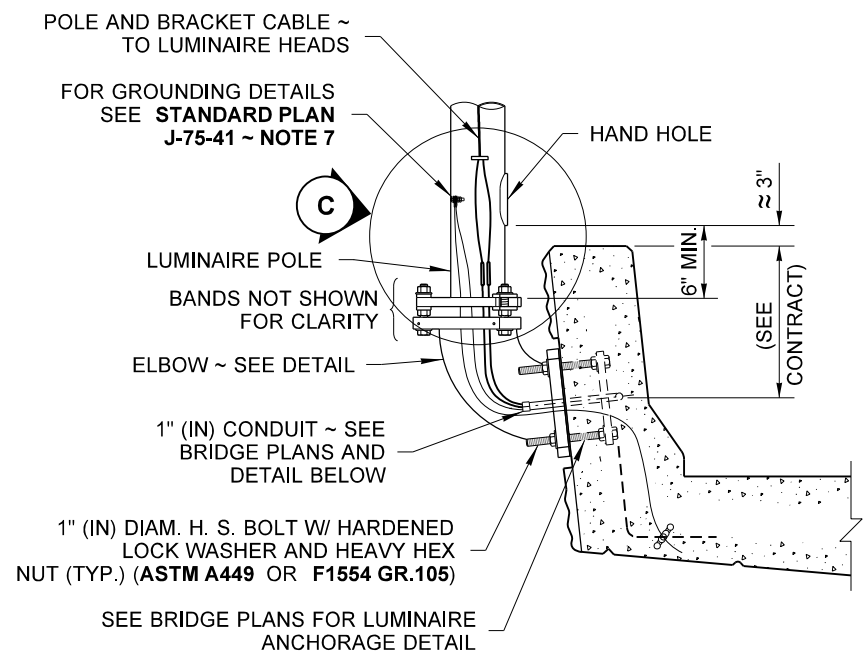


BRIDGE PEDESTRIAN BARRIER

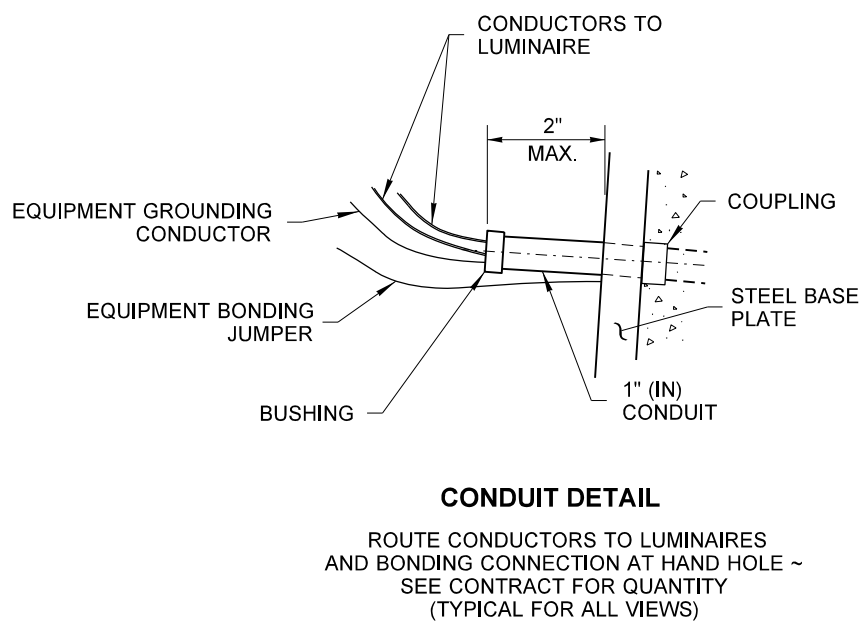
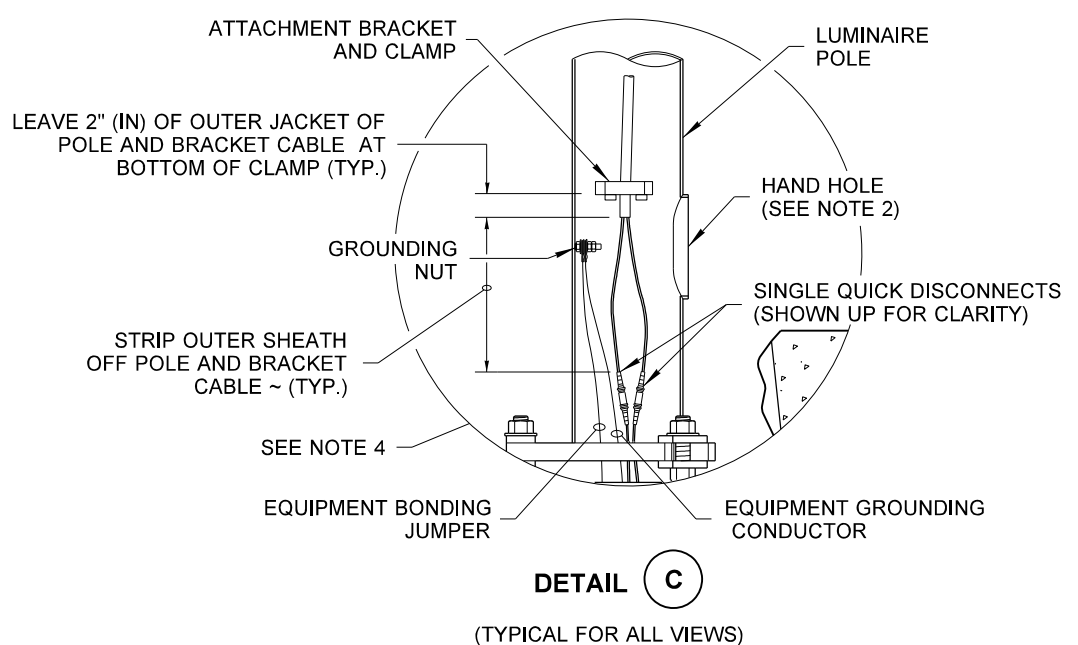


WHEN TRAFFIC BARRIER HEIGHT IS 42" (IN), MAINTAIN APPROXIMATE HEIGHT FROM TOP OF BARRIER TO HAND HOLE SHOWN.

SINGLE-SLOPE BRIDGE TRAFFIC BARRIER TYPICAL SECTIONS



F-SHAPE BRIDGE TRAFFIC BARRIER



STEEL LIGHT STANDARD ELBOW MOUNTING ON BRIDGE & RETAINING WALL STANDARD PLAN J-28.45-03

SHEET 2 OF 2 SHEETS

APPROVED FOR PUBLICATION

STATE DESIGN ENGINEER
 Washington State Department of Transportation