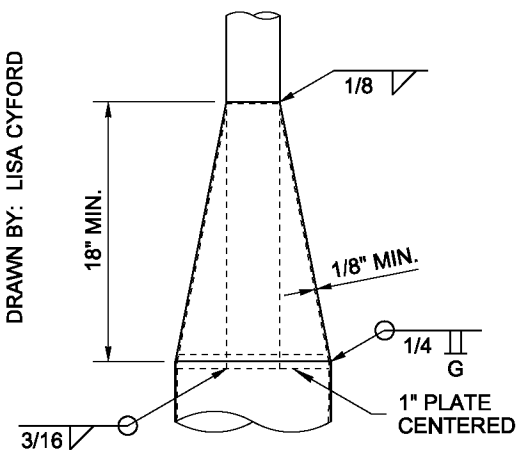
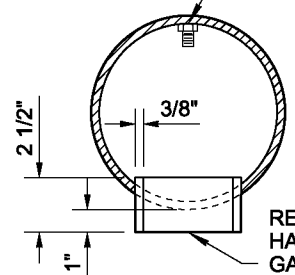


DRAWN BY: LISA CYFORD

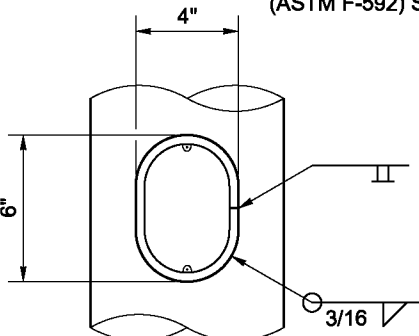


**CONE SECTION DETAIL**

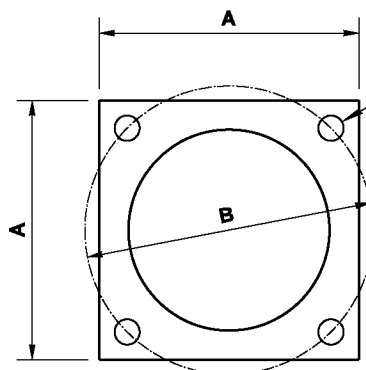
1/2" STEEL BOLT, 1 1/2" LONG WITH WASHER AND NUT FOR GROUND



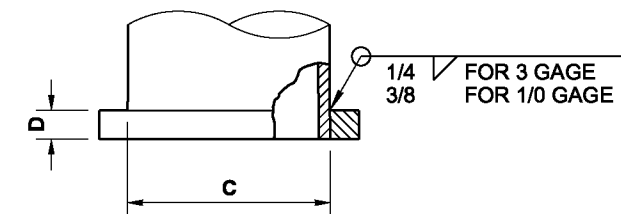
REMOVABLE RAINTIGHT HAND HOLE COVER WITH GASKET ~ FASTEN WITH 2 STAINLESS STEEL (ASTM F-592) SCREWS



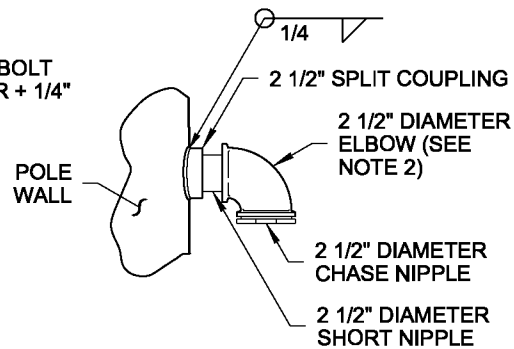
**HAND HOLE DETAIL (SEE NOTE 5)**



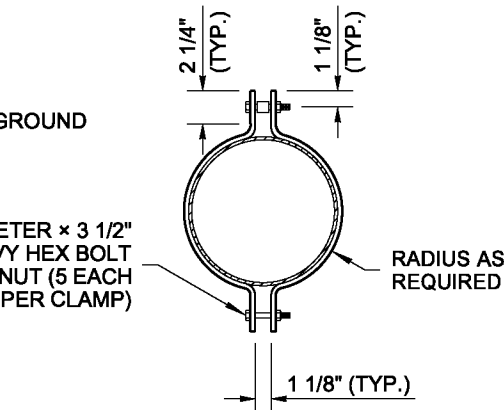
ANCHOR BOLT DIAMETER + 1/4" (TYP.)



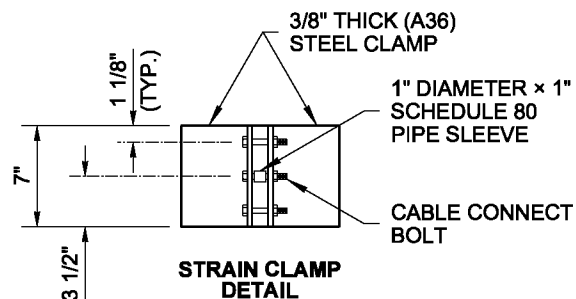
**BASE PLATE DETAIL**



**WIREWAY DETAIL**

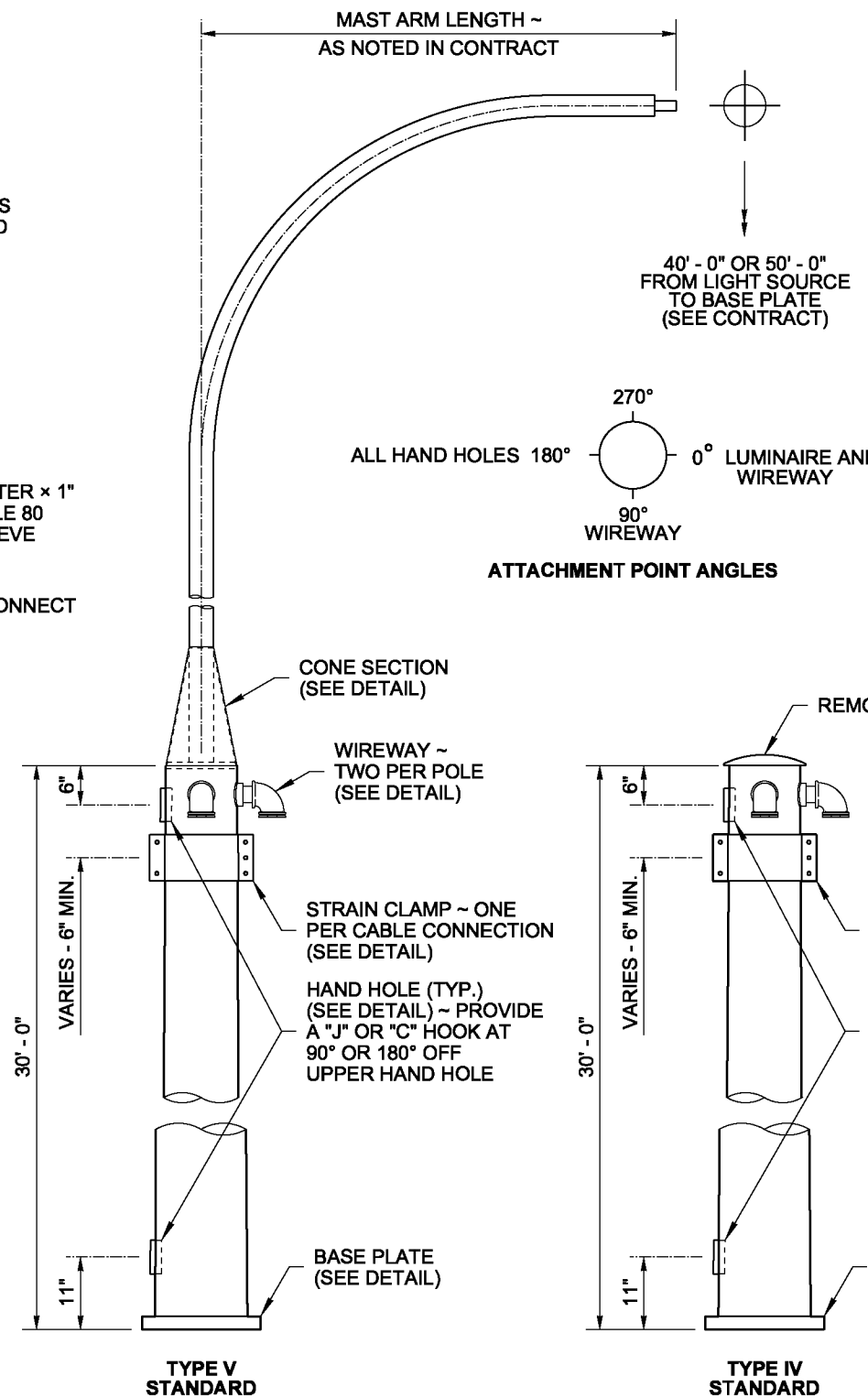


**STRAIN CLAMP DETAIL**

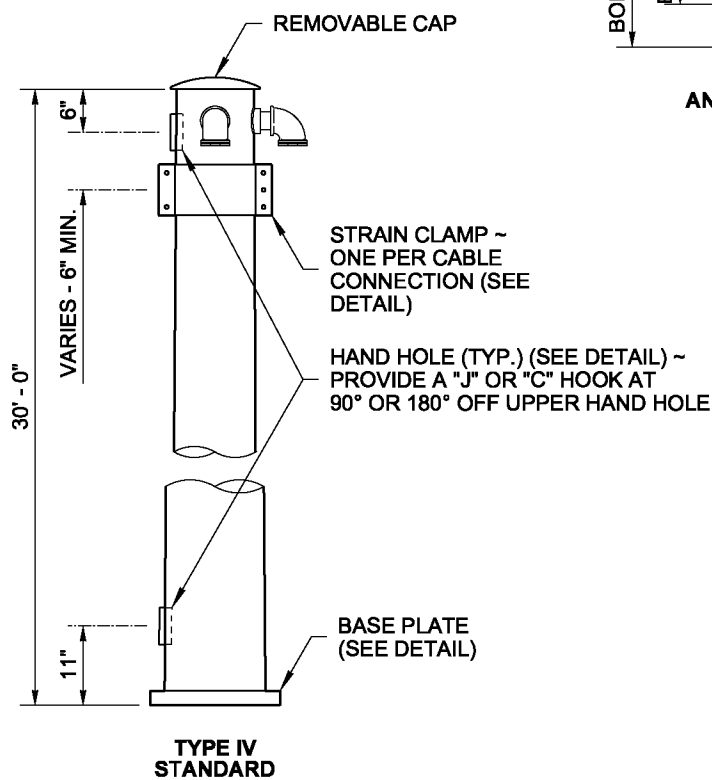


\* MINIMUM REQUIRED DIMENSION - CONTRACTOR MAY REVISE WITH ENGINEER APPROVAL

KEY	ITEM	POLE CLASS (Resultant Horizontal Tension)							
		1900 LB	2700 LB	3700 LB	4800 LB	5600 LB	6300 LB	7200 LB	
	POLE GAGE OR THICKNESS *	3	3	1/4	5/16	5/16	5/16	5/16	
A	BASE PLATE	15"	17"	19"	20"	20"	22"	22"	
B	ANCHOR BOLT CIRCLE DIAM.	15"	17"	19"	20"	20"	22"	22"	
C	POLE BASE DIAMETER *	11"	12 1/2"	14"	14"	15"	16"	17"	
D	BASE PLATE THICKNESS *	1 1/2"	1 1/2"	1 1/2"	1 3/4"	1 3/4"	1 3/4"	1 3/4"	
E	ANCHOR BOLT DIAMETER	1 1/4"	1 1/2"	1 1/2"	1 3/4"	1 3/4"	1 3/4"	1 3/4"	



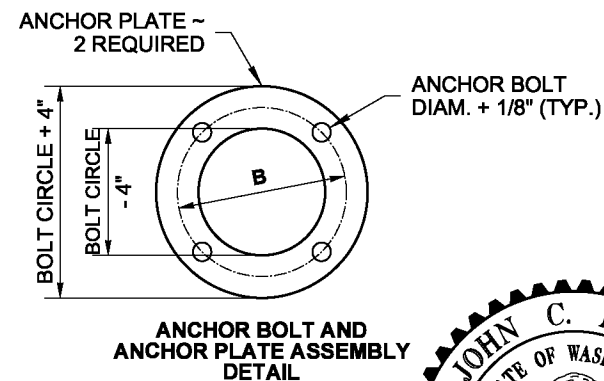
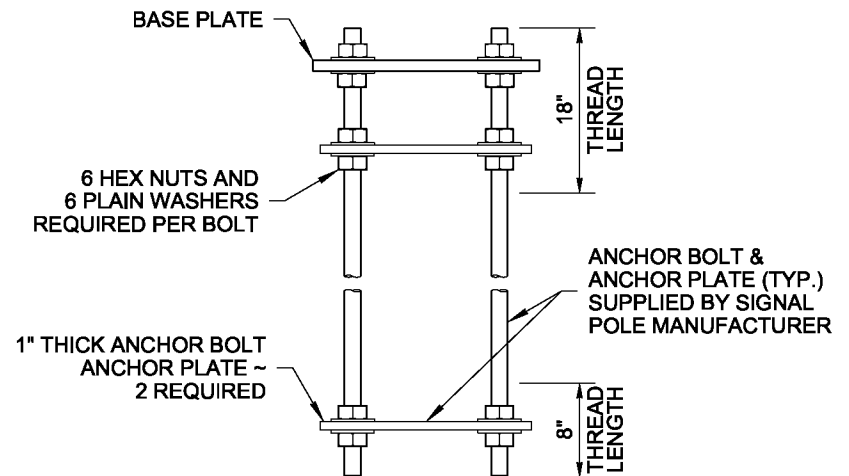
**TYPE V STANDARD**



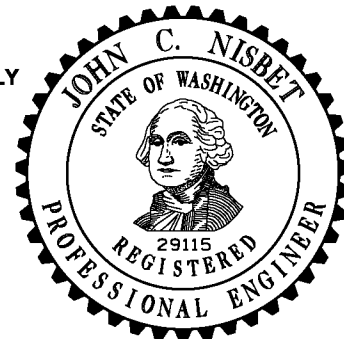
**TYPE IV STANDARD**

**NOTES**

1. This structure has been designed according to the Fifth Edition 2009 AASHTO Standard Specifications for Structural Supports for Highway Signs, Luminaires, and Traffic Signals: Basic wind velocity 90 mph, Design Life/Recurrence Interval 50 years, and Fatigue Category III.
2. 2 1/2" diameter weatherhead may be substituted for the elbow and nipple assembly.
3. Pole shaft shall have 0.14" ft/taper.
4. See **Standard Plan J-15.15** for Span Wire Installation details.
5. Hand holes may be 6" x 4", oval or rectangle. Provide a "J" or "C" hook at 90° or 180° off upper hand hole.
6. See **Standard Plan J-27.10** for Type IV and V Strain Pole Foundation.



**ANCHOR BOLT AND ANCHOR PLATE ASSEMBLY DETAIL**



NOTE: THIS PLAN IS NOT A LEGAL ENGINEERING DOCUMENT UNTIL ELECTRONICALLY SIGNED BY THE ENGINEER AND APPROVED FOR PUBLICATION. IT IS NOT TO BE FILED AT THE WASHINGTON STATE DEPARTMENT OF TRANSPORTATION. A COPY MAY BE OBTAINED UPON REQUEST.

**TYPE IV AND V STRAIN POLE STANDARD**  
**STANDARD PLAN J-27.15-00**  
 SHEET 1 OF 1 SHEET  
 APPROVED FOR PUBLICATION  
**Pasco Bakotich III** 03-15-12  
 STATE DESIGN ENGINEER DATE  
 Washington State Department of Transportation