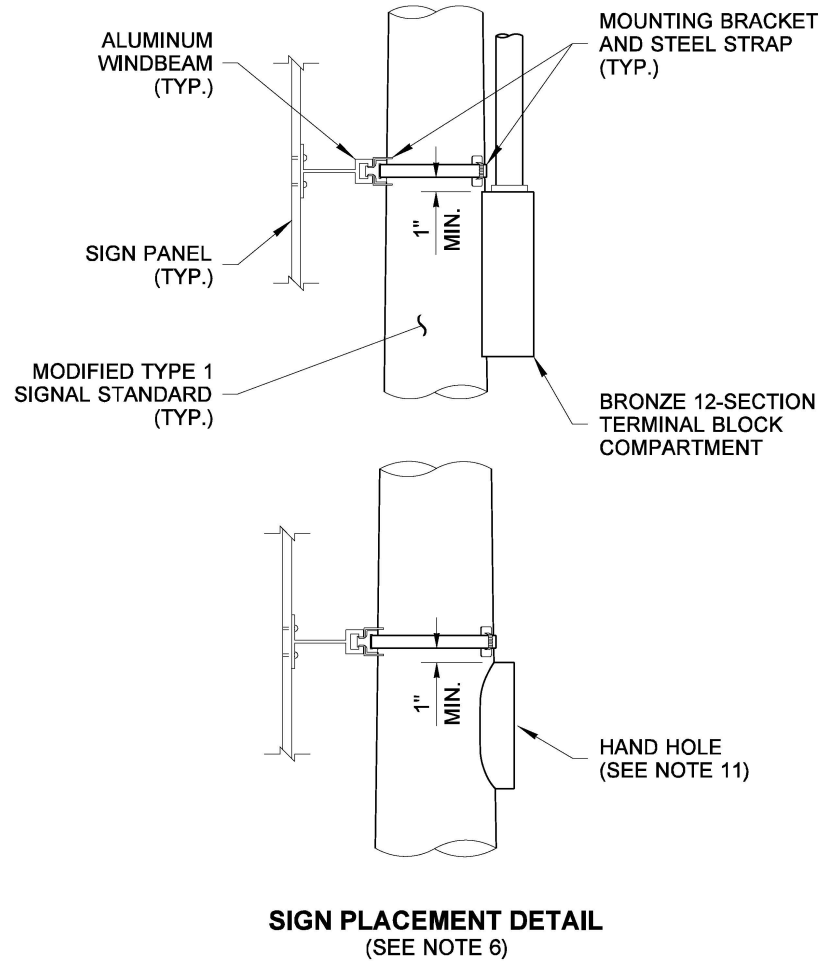
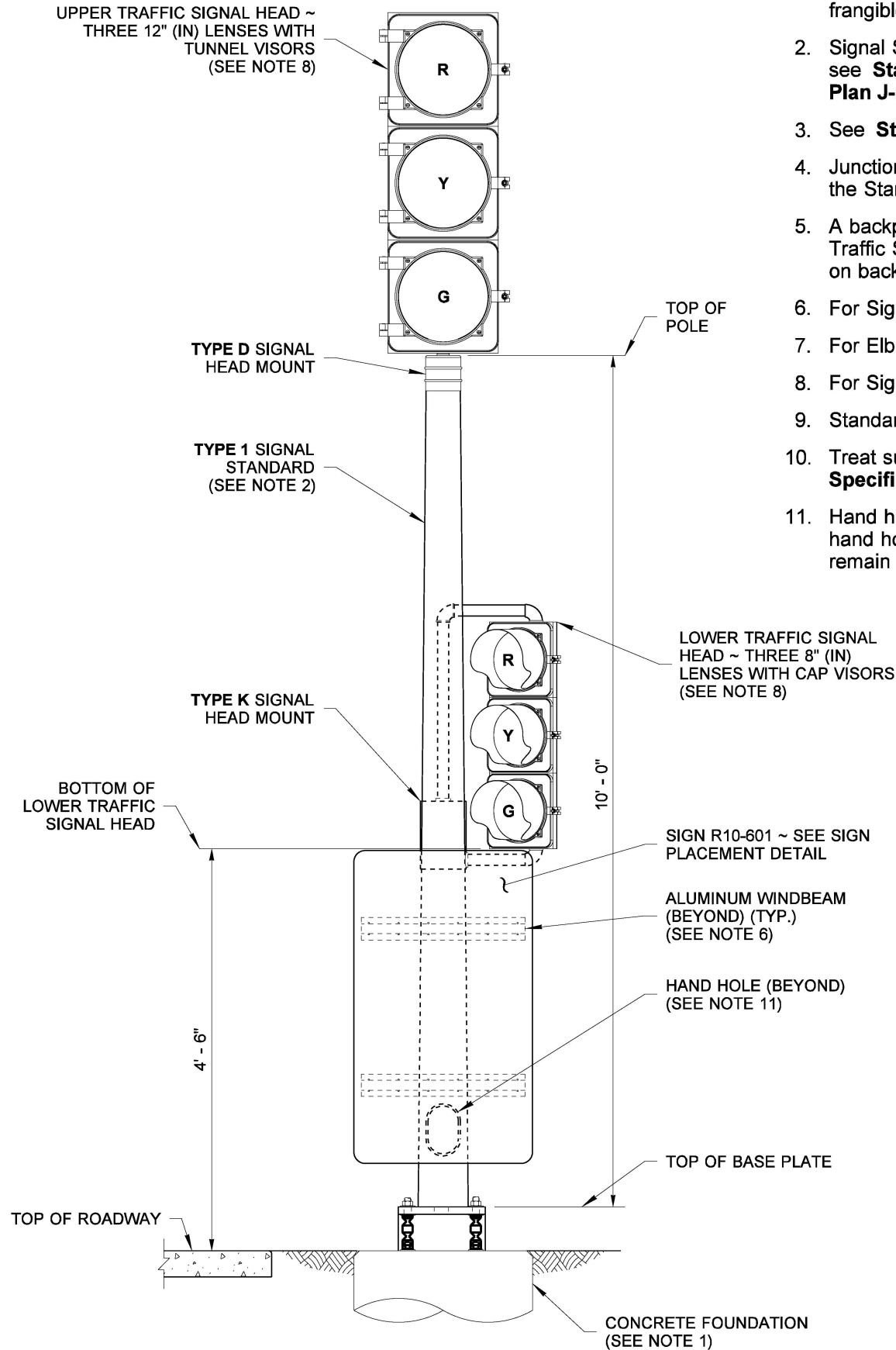


DRAWN BY: COLBY FLETCHER



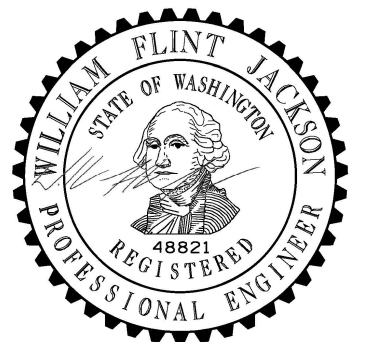
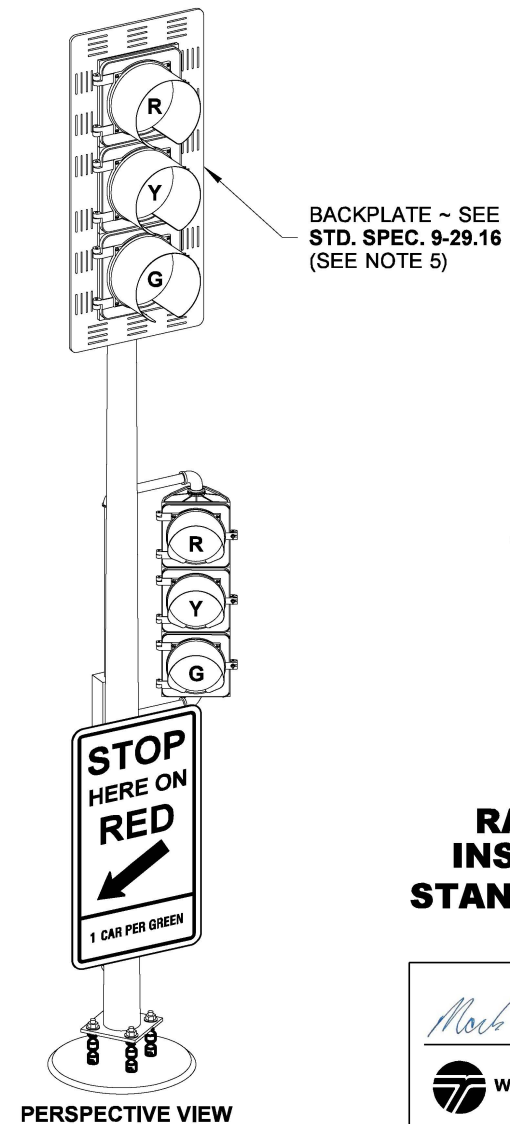
1 BACKPLATES NOT SHOWN FOR CLARITY.



RAMP METER SIGNAL STANDARD 1
BREAKAWAY BASE SHOWN

NOTES

1. See **Standard Plan J-21.10** for Signal Standard Foundation Details. All installation types use frangible (breakaway) bolts with the exception of Bridge Elbow installation.
2. Signal Standard Type dependent on total pole height and base plate requirements. For Type RM, see **Standard Plan J-22.15**. For Type PS, see **Standard Plan J-20.16**. For Type I, see **Standard Plan J-21.15**.
3. See **Standard Plan J-22.16** for Wiring and Electrical Details.
4. Junction Box serving the Standard shall be located no more than 10' - 0" (5' - 0" preferred) from the Standard.
5. A backplate shall be installed on the Upper Traffic Signal Head. Install a backplate on the Lower Traffic Signal Head only when required by the contract. Do not install retro-reflective tape on backplates.
6. For Sign Installation Details, see **Standard Plan G-30.10**.
7. For Elbow Mounting Details, see **Standard Plan J-28.45**. Verify barrier angle prior to fabricating elbow.
8. For Signal Head Mounting Details, see **Standard Plan J-75.10**.
9. Standard shall use breakaway base if installed closer than 4' (ft) from the face of guardrail.
10. Treat surrounding pole with galvanizing repair paint meeting the requirements of **Standard Specification Section 9-08.1(2)**. Apply two coats. Paint shall be dry before applying second coat.
11. Hand hole shall face toward roadway for Elbow Mount Barrier installations. For all other installations, hand hole shall face the opposite direction from the Upper Traffic Signal Head. Hand hole face shall remain accessible after pole and sign installation is complete.



Jun 20, 2024

**POST MOUNT
RAMP METER SIGNAL
INSTALLATION DETAILS
STANDARD PLAN J-22.17-00**

SHEET 1 OF 3 SHEETS

APPROVED FOR PUBLICATION

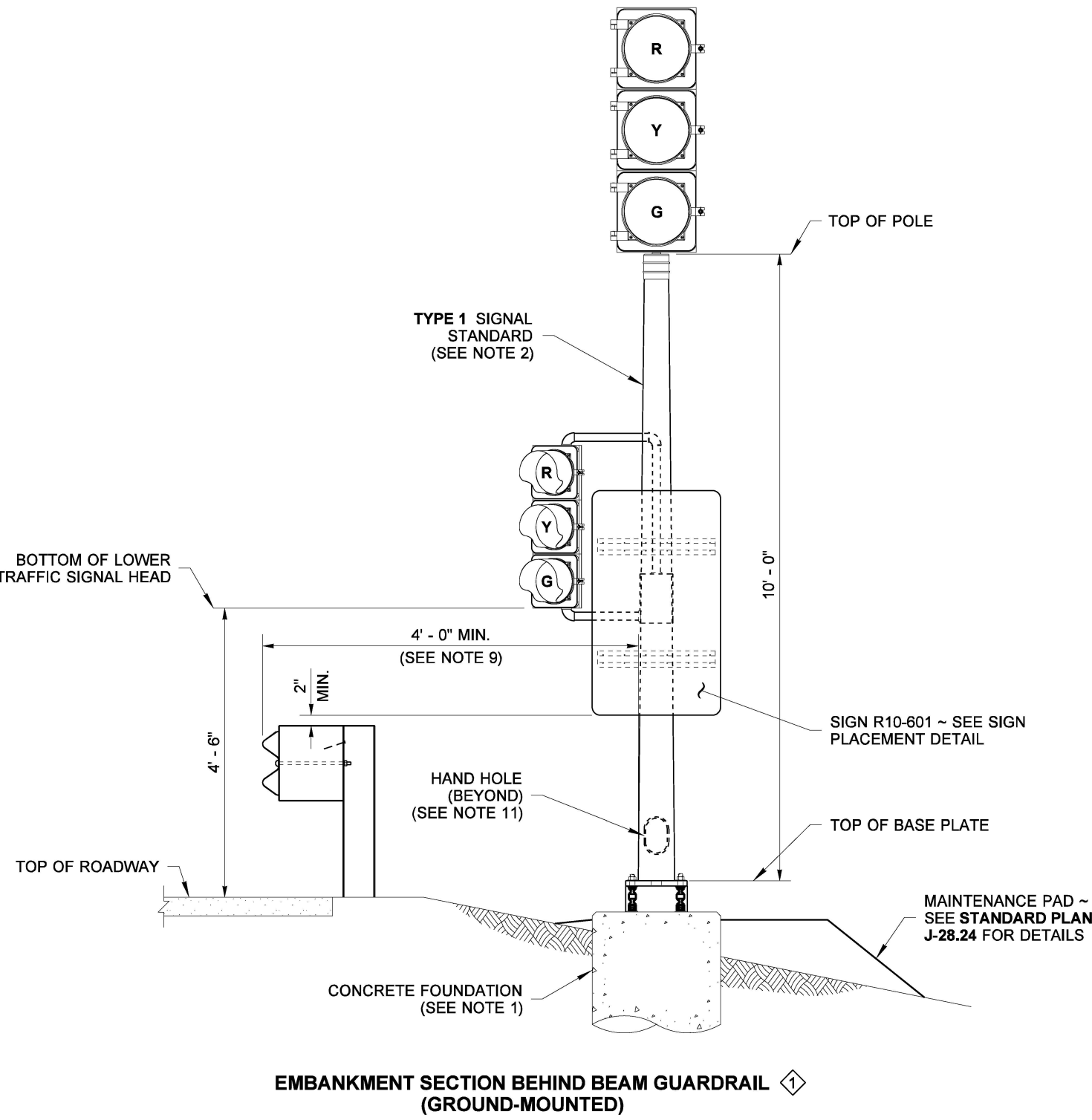
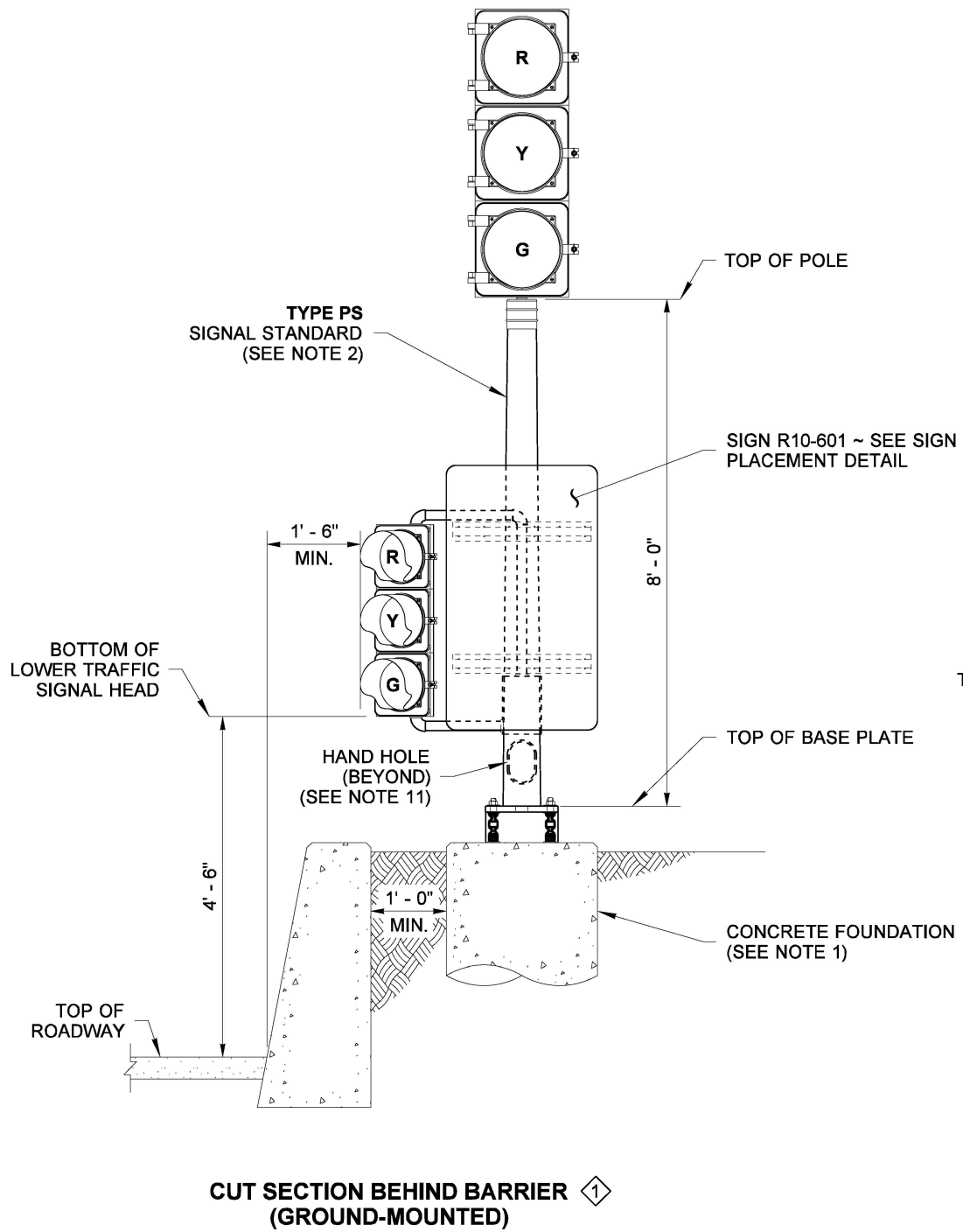
Mark A. Powers

Jun 21, 2024

STATE DESIGN ENGINEER



Washington State Department of Transportation



1 BACKPLATES NOT SHOWN FOR CLARITY.



Jun 20, 2024

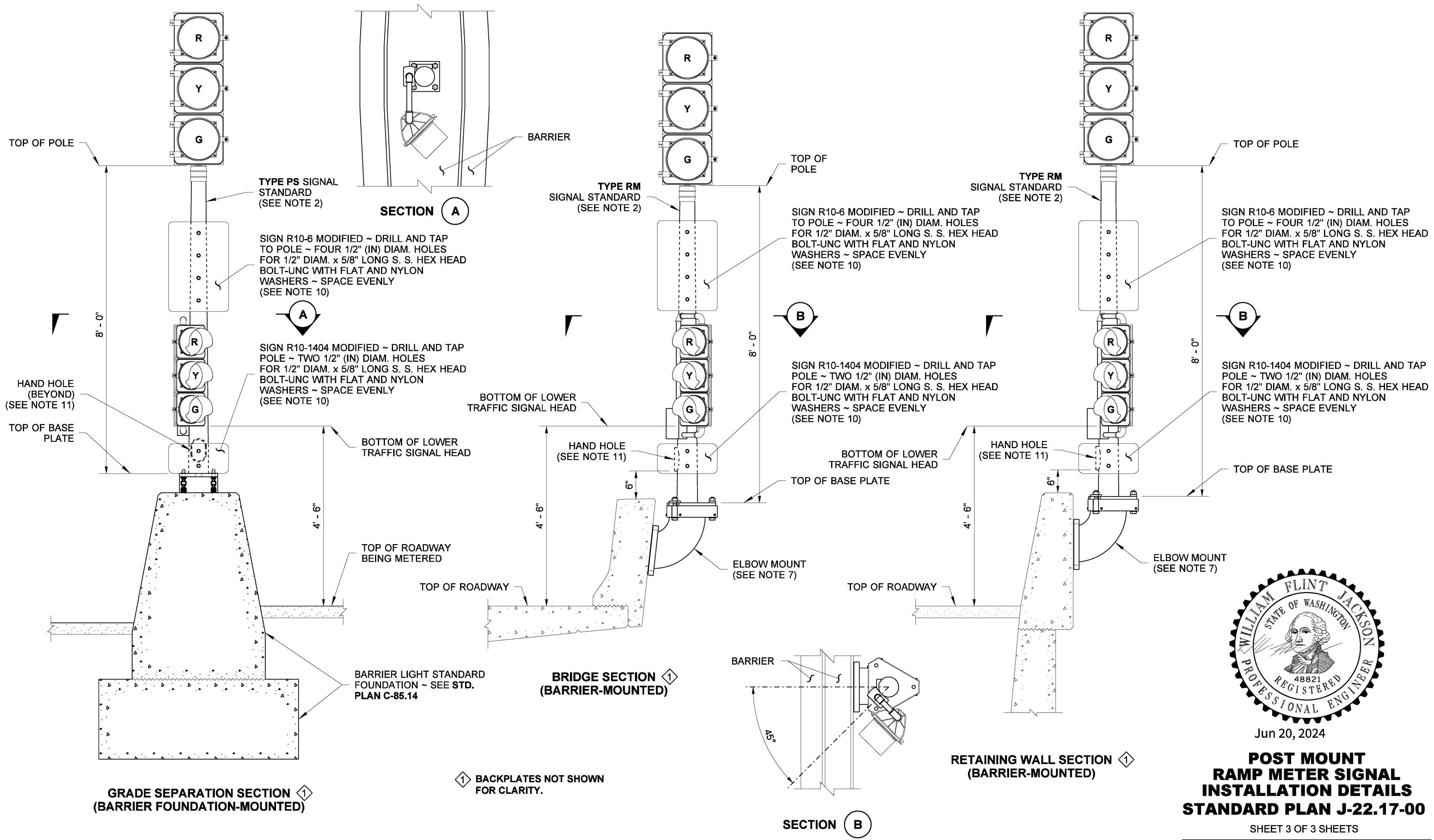
**POST MOUNT
RAMP METER SIGNAL
INSTALLATION DETAILS
STANDARD PLAN J-22.17-00**

SHEET 2 OF 3 SHEETS

APPROVED FOR PUBLICATION

Mark A. Davies Jun 21, 2024
STATE DESIGN ENGINEER





BACKPLATES NOT SHOWN FOR CLARITY.



Jun 20, 2024

POST MOUNT RAMP METER SIGNAL INSTALLATION DETAILS STANDARD PLAN J-22.17-00

SHEET 3 OF 3 SHEETS

APPROVED FOR PUBLICATION

Mark A. Davis Jun 21, 2024

STATE DESIGN ENGINEER

