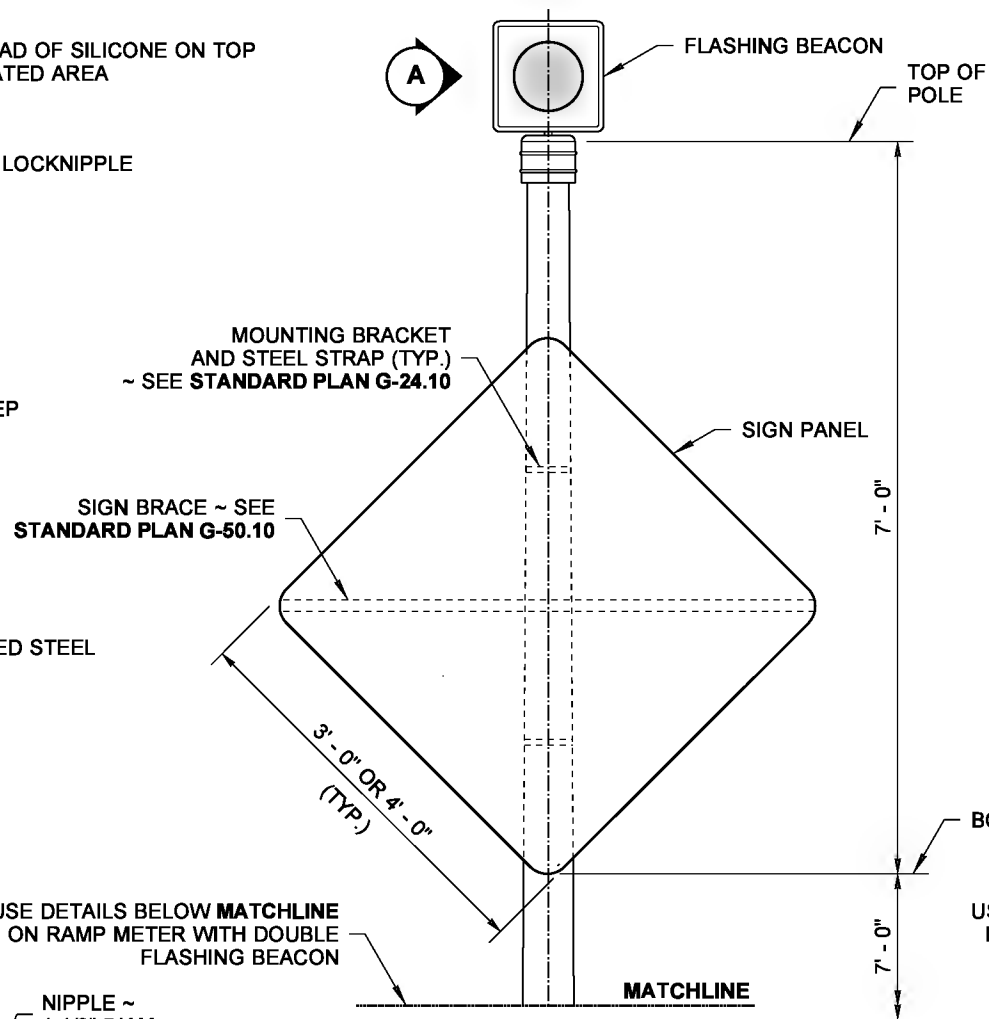
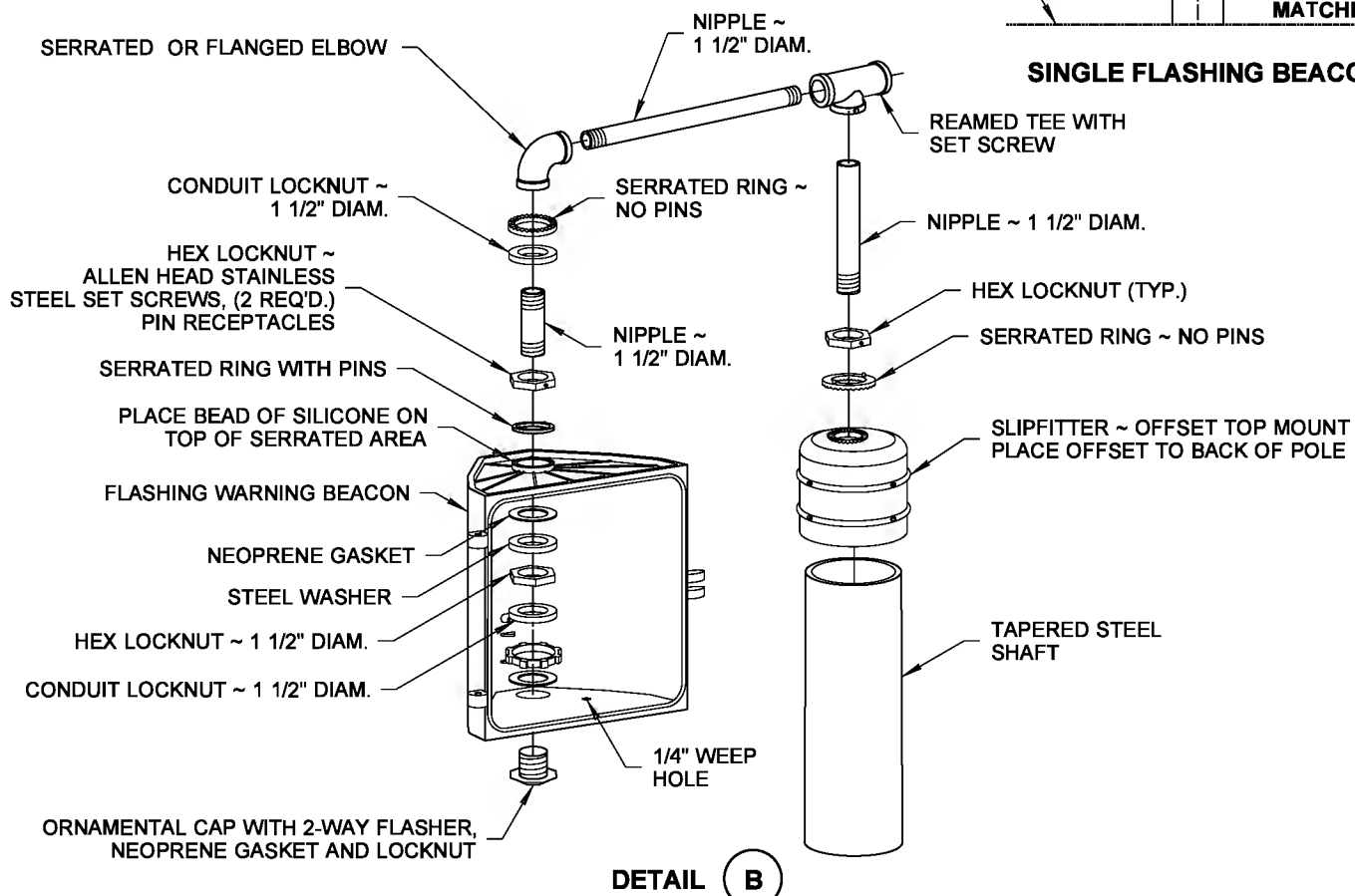


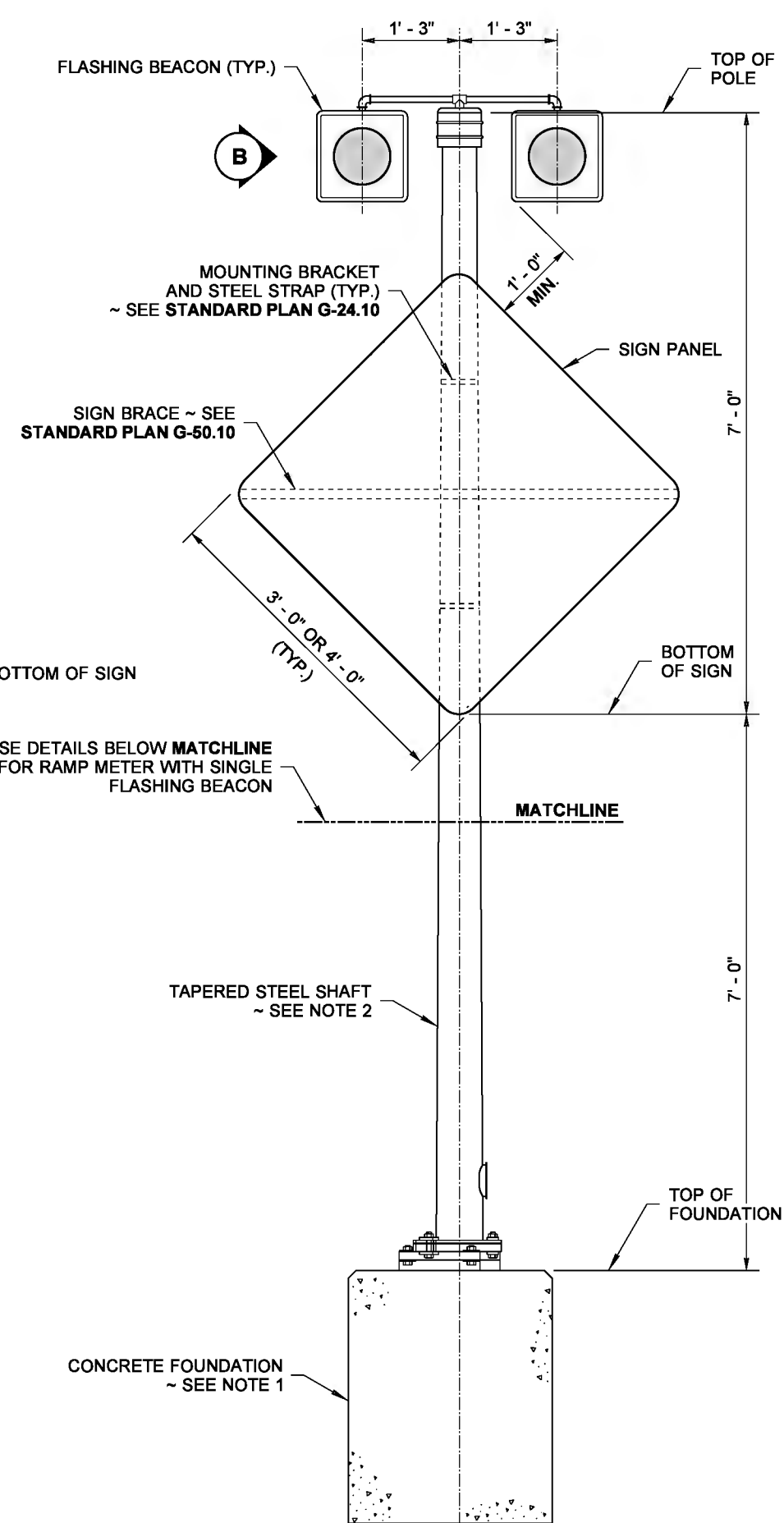
DETAIL A
SINGLE FLASHING BEACON DETAIL



SINGLE FLASHING BEACON



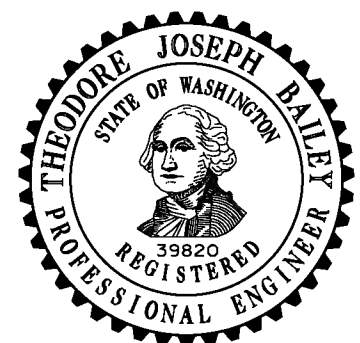
DETAIL B
ALTERNATING FLASHING BEACON DETAIL
(SHOWN WITHOUT HINGE DOOR FOR CLARITY)



ALTERNATING FLASHING BEACON
FLASHING BEACON TYPE 1
SLIP BASE SHOWN

NOTES

1. See **Standard Plan J-21.10** for Signal Standard Foundation details.
2. All poles shall be hot dip galvanized per AASHTO M111.
3. Welding of structures shall be in accordance with the latest edition of the AWS D1.1 Structural Welding Code - Steel. All butt welds shall be ground flush with base metal.
4. Visor shall be 8" Polycarbonate, fully enclosed circle at bottom to reduce glare on sign. Display shall be of appropriate color needed.
5. See **Standard Plan J-21.17** for Electrical details.
6. Junction Box serving the Standard shall preferably be located 5' - 0" (10' - 0" Max.) from the Standard.



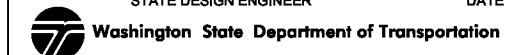
NOTE: THIS PLAN IS NOT A LEGAL ENGINEERING DOCUMENT UNLESS IT IS USED IN CONJUNCTION WITH THE ORIGINAL SET BY THE ENGINEER AND ARCHITECT OR IN ACCORDANCE WITH THE FILE AT THE WASHINGTON STATE DEPARTMENT OF TRANSPORTATION. A COPY MAY BE OBTAINED UPON REQUEST.

FLASHING BEACON
TYPE 1 SIGNAL
STANDARD DETAILS
STANDARD PLAN J-21.16-01

SHEET 1 OF 1 SHEET

APPROVED FOR PUBLICATION

Pasco Bakotich III 6/10/13
STATE DESIGN ENGINEER DATE



DRAWN BY: LISA CYFORD