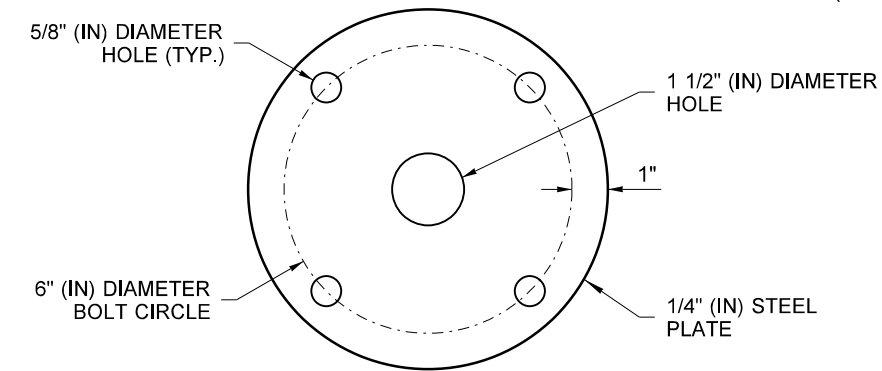
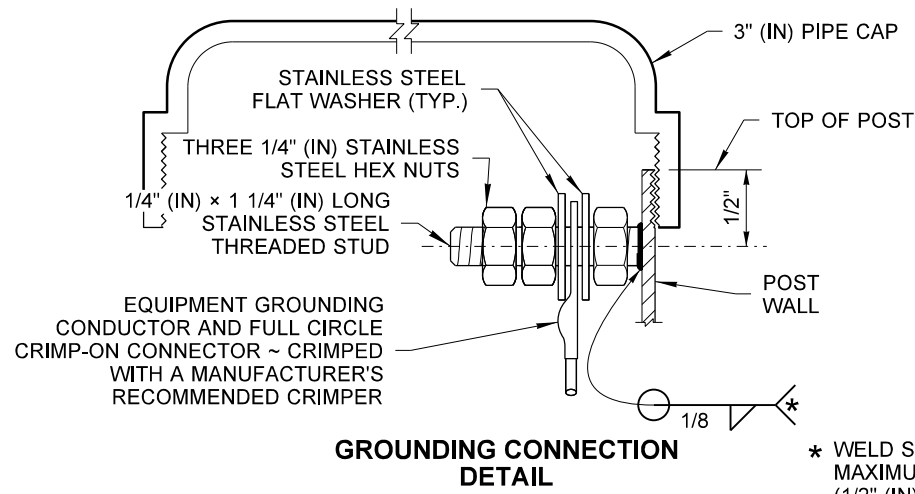
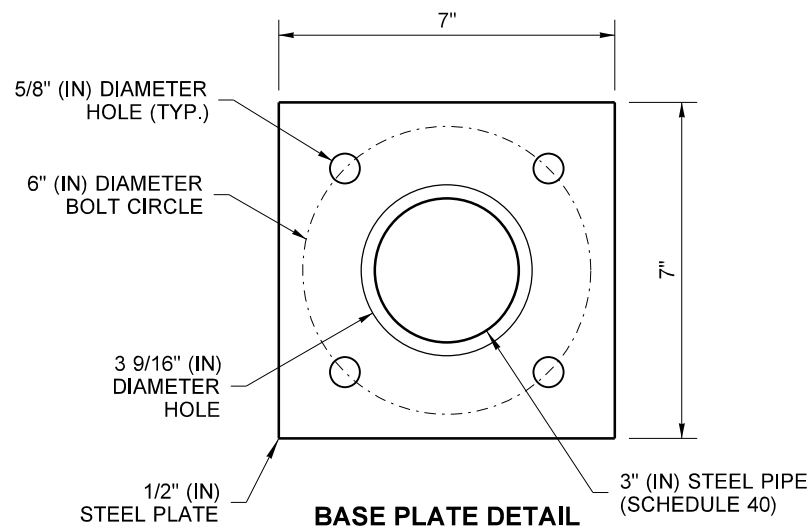


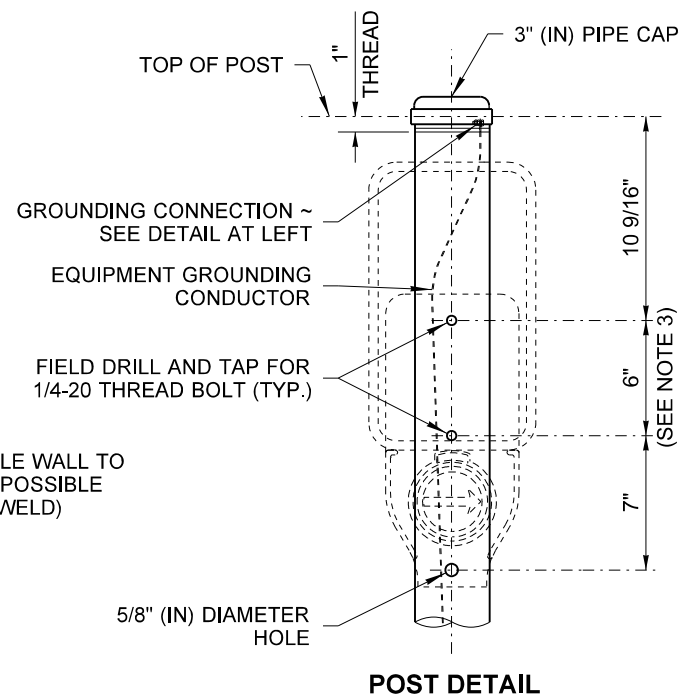
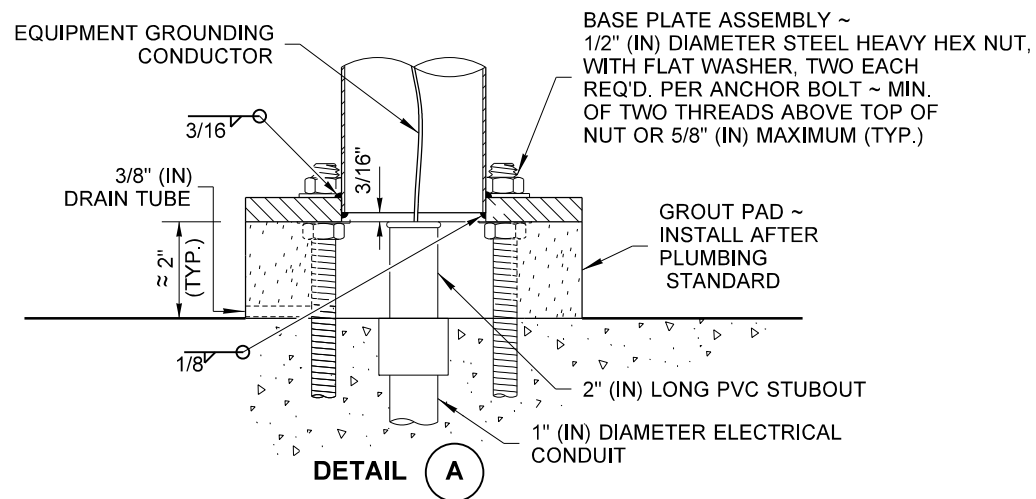
DRAWN BY: FERN LIDDELL



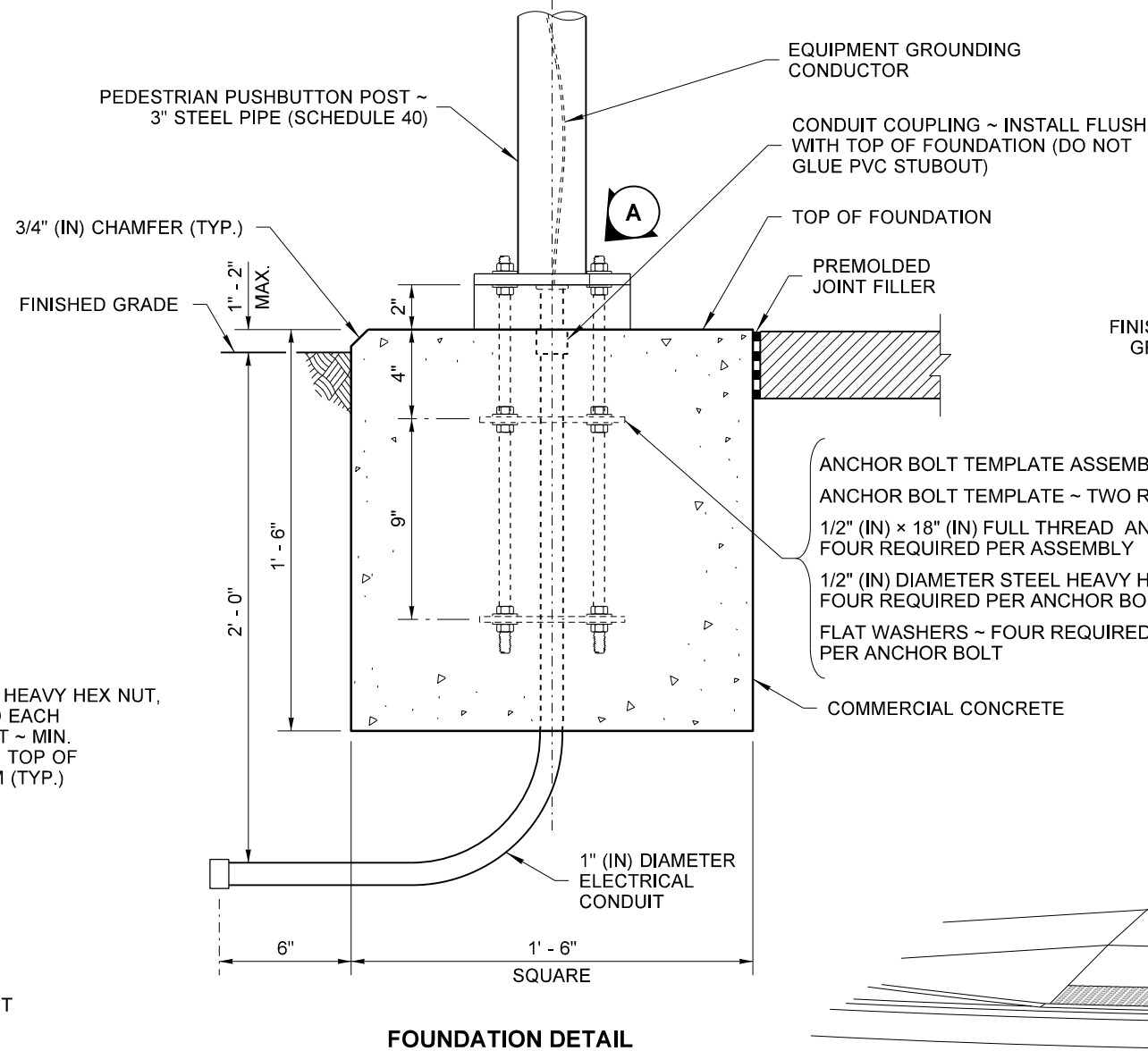
ANCHOR BOLT TEMPLATE



BASE PLATE DETAIL



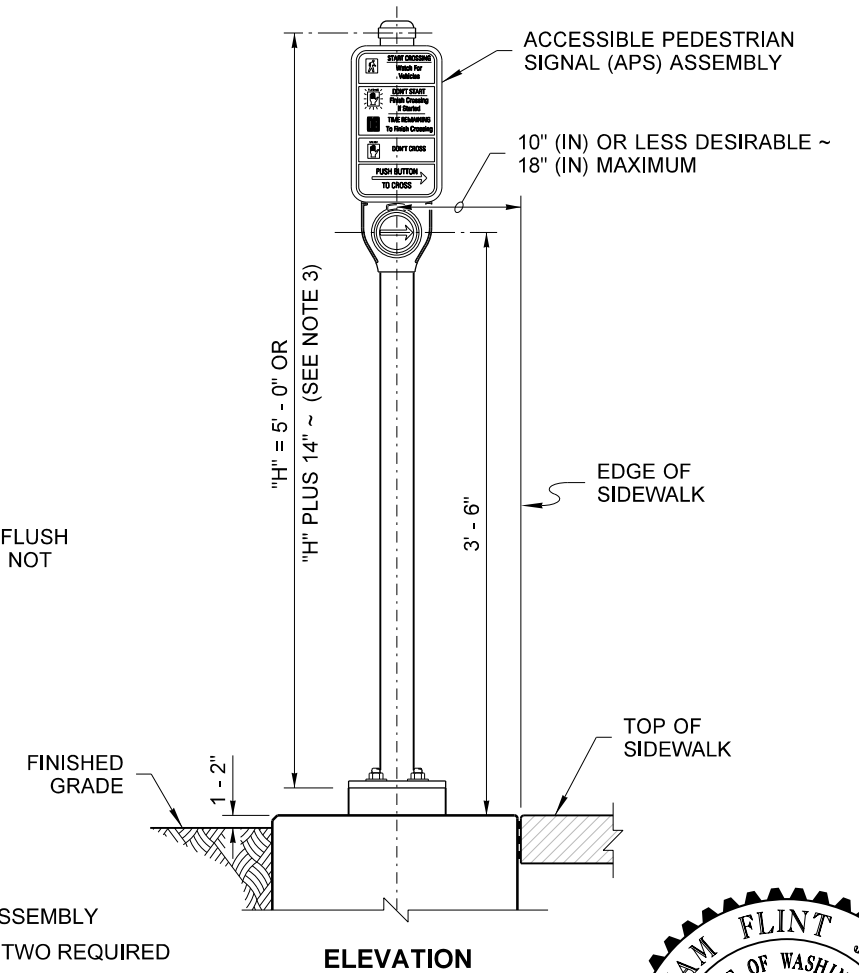
POST DETAIL



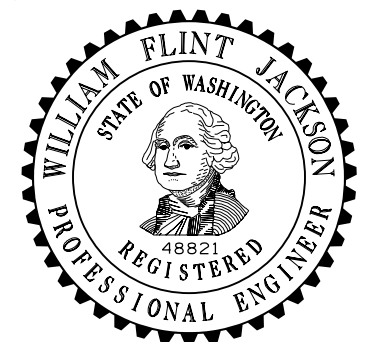
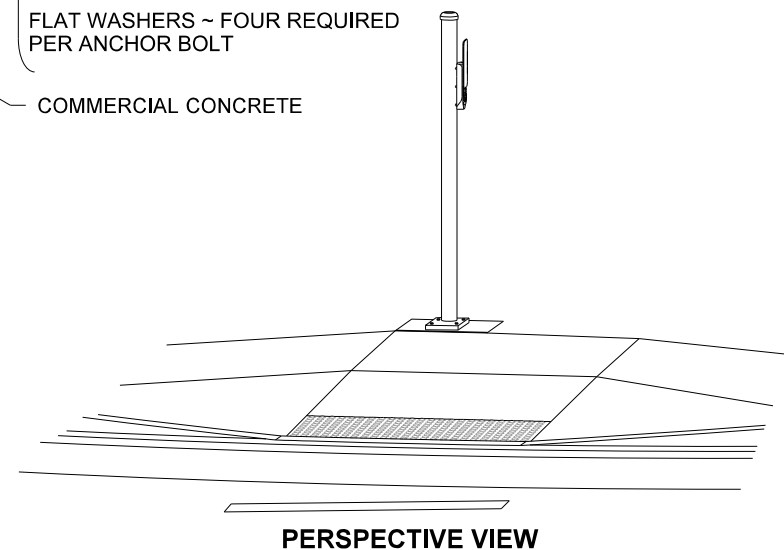
FOUNDATION DETAIL

NOTES

1. See **Standard Plan J-20.26** for Accessible Pedestrian Pushbutton details.
2. Where shown in the plans, install plaque (R10-32P) "PUSH BUTTON FOR 2 SECONDS FOR EXTRA CROSSING TIME" above the Accessible Pedestrian Signal (APS) assembly. Add 14" (in) to post height to accommodate plaque and leave a 2" (in) space between signs.
3. Mounting distances vary between manufacturers. See manufacturers recommendations for mounting information.
4. Junction Box serving the Standard shall preferably be located 5' - 0" (10' - 0" Max.) from the Standard.
5. Two button installation may require adaptor(s).



ELEVATION



ACCESSIBLE PEDESTRIAN PUSHBUTTON POST (PPB) AND FOUNDATION
STANDARD PLAN J-20.10-04

SHEET 1 OF 1 SHEET

APPROVED FOR PUBLICATION

STATE DESIGN ENGINEER
Washington State Department of Transportation