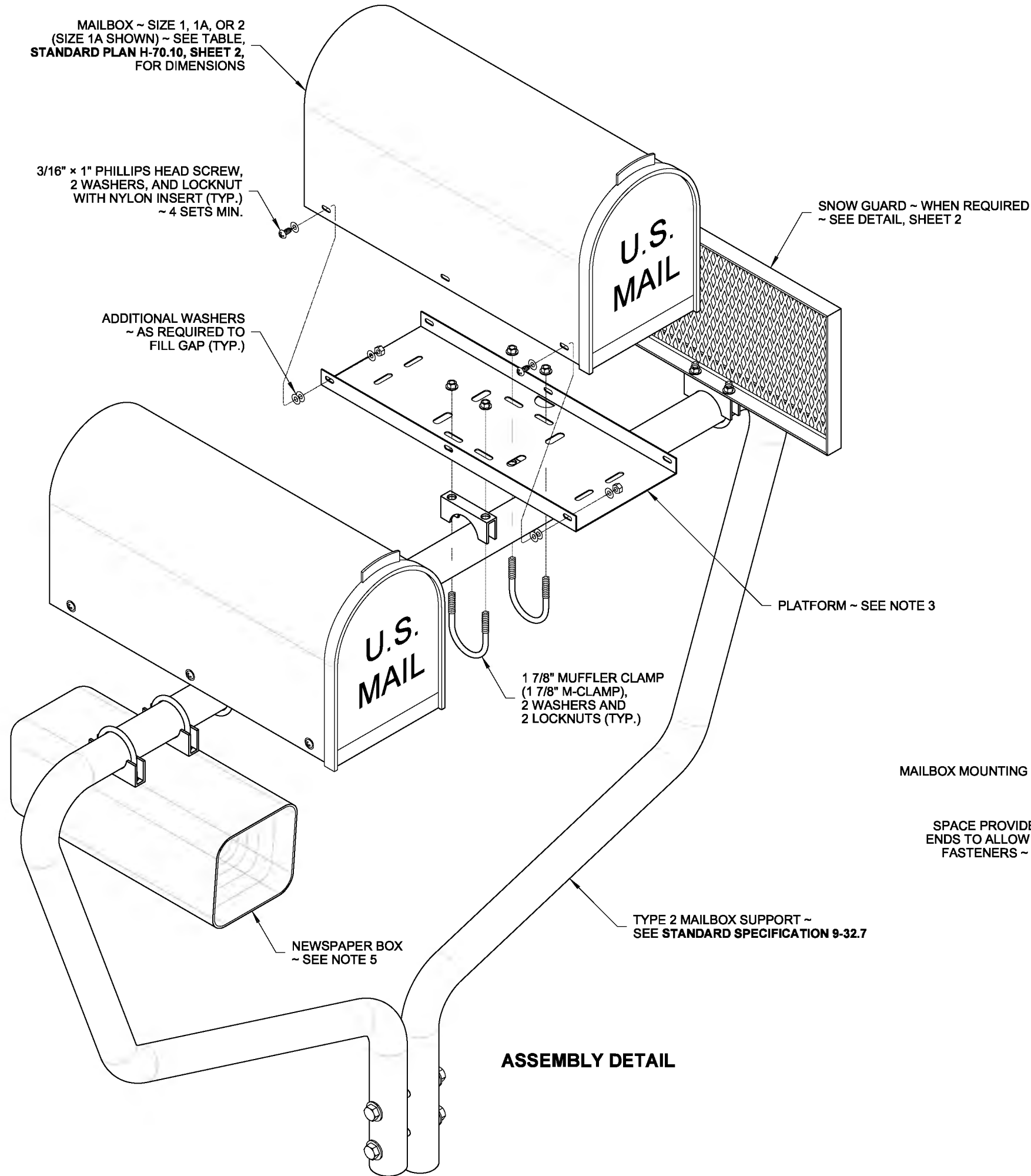


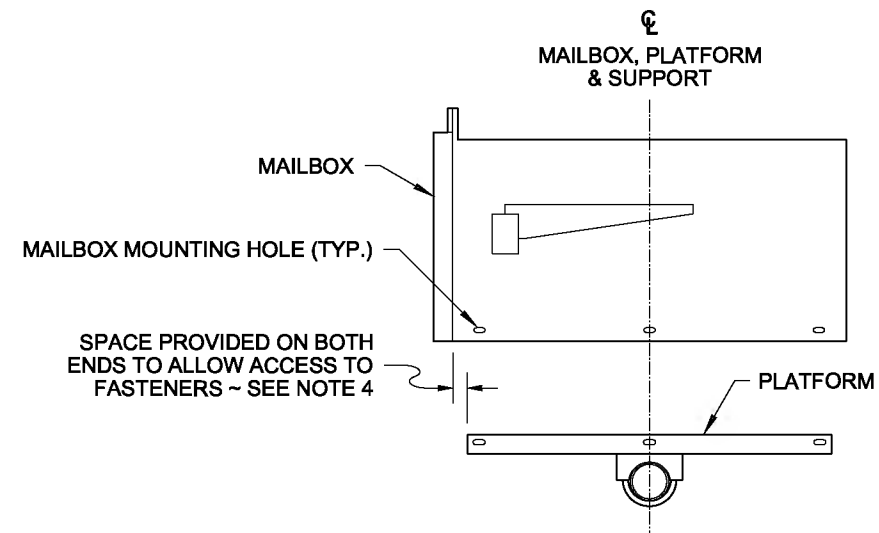
DRAWN BY: MARK SUJKA



ASSEMBLY DETAIL

NOTES

1. The anchoring system shall meet NCHRP 350 crash test criteria. Use a socket and wedge system or the anchoring system supplied by or recommended by the Type 2 Support manufacturer.
2. A maximum of five mailboxes may be installed on a Type 2 Support.
3. The Platform design shown in this plan is detailed in the PLATFORM DETAIL, Standard Plan H-70.10, Sheet 2. The design features slots that accommodate several types of mailbox supports; only those slots necessary for assembling the type being installed are required. An adjustable platform may be used in lieu of this platform design. Adjustable platforms must fit the 1 7/8" M-Clamp.
4. Center the mailbox on the platform to ensure space for the mailbox door to open and to allow space for installing the fasteners (see ALIGNMENT DETAIL). Spacing of mailbox mounting holes varies among manufacturers. Attachment of the mailbox to the platform may require drilling additional holes through the mailbox to fit the platform.
5. Attach a newspaper box to a Type 2 Support with two 1 7/8" Muffer Clamps spaced 4" apart. Field drill 7/16" holes in the newspaper box to fit. Newspaper boxes must not extend beyond the front of the mailbox when the mailbox door is closed.



ALIGNMENT DETAIL  
SEE NOTE 4



NOTE: THIS PLAN IS NOT A LEGAL ENGINEERING DOCUMENT UNTIL ELECTRONICALLY SIGNED BY THE ORIGINAL DESIGNER. THE ENGINEER HAS APPROVED FOR PUBLICATION. THIS PLAN IS FILED AT THE WASHINGTON STATE DEPARTMENT OF TRANSPORTATION. A COPY MAY BE OBTAINED UPON REQUEST.

MAILBOX SUPPORT  
TYPE 2

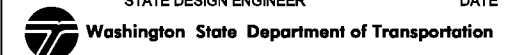
STANDARD PLAN H-70.20-01

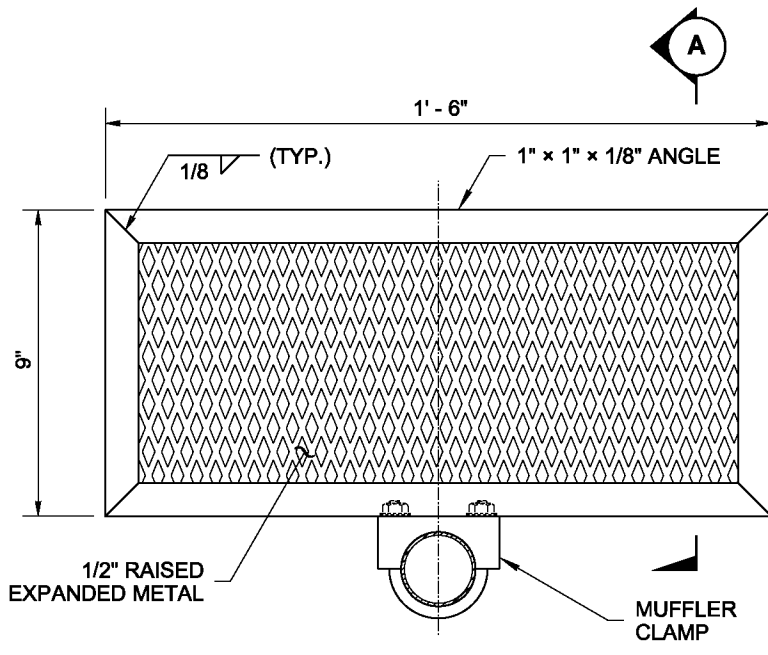
SHEET 1 OF 2 SHEETS

APPROVED FOR PUBLICATION

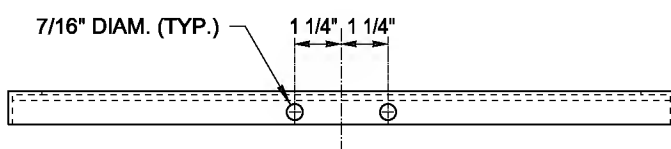
Pasco Bakotich III 02-16-12

STATE DESIGN ENGINEER DATE

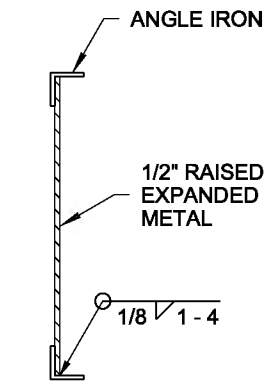




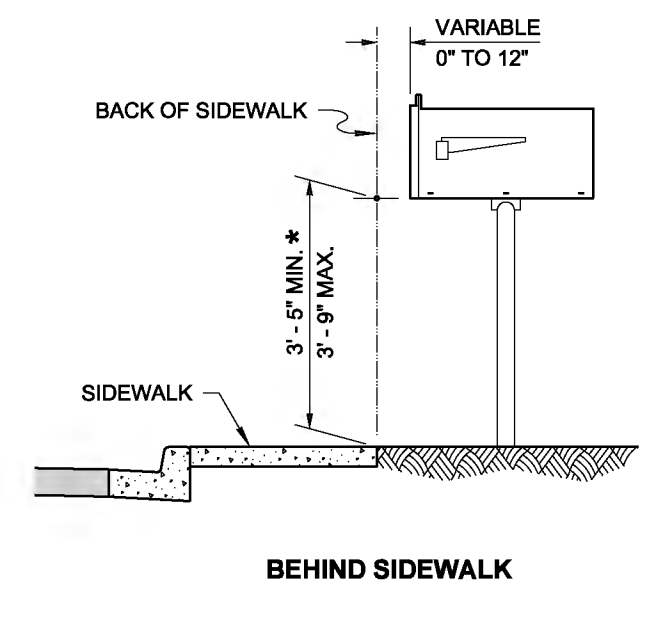
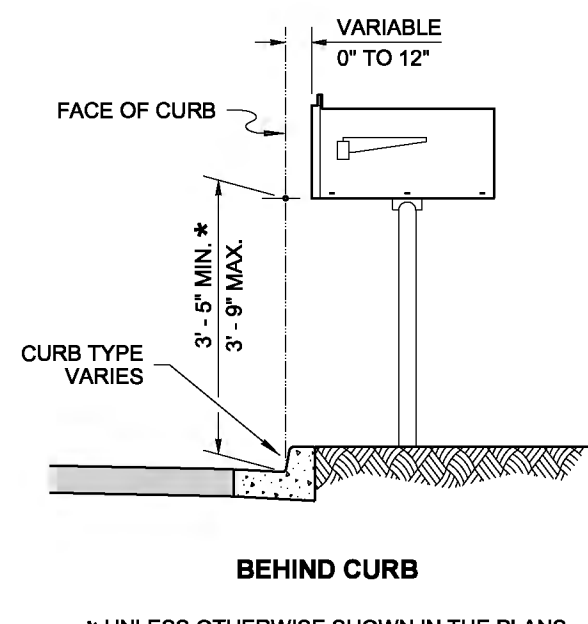
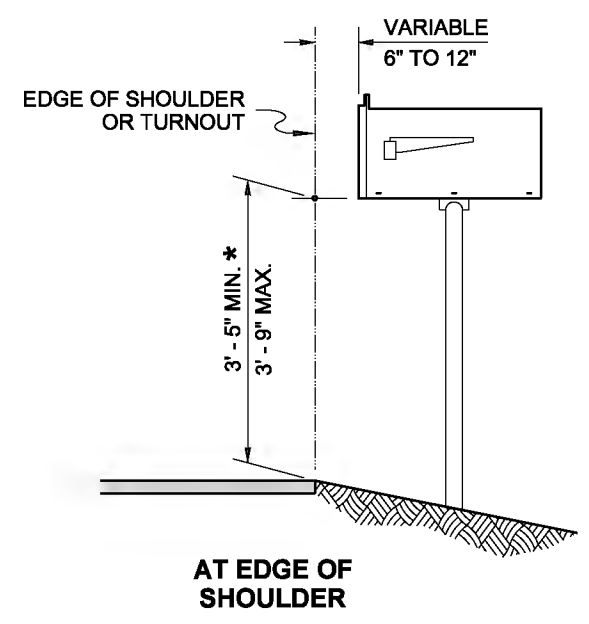
FRONT VIEW



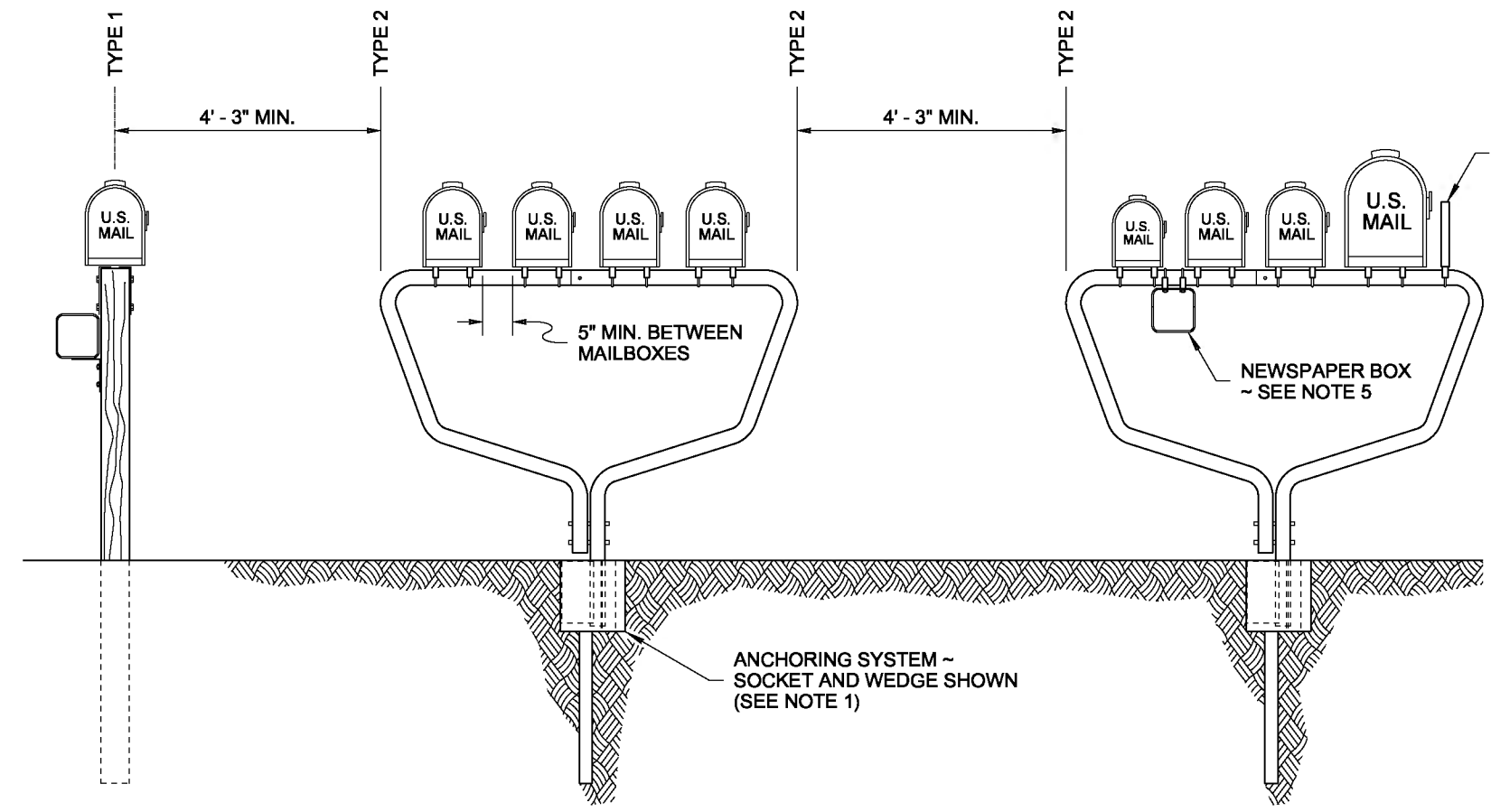
BOTTOM VIEW  
SNOW GUARD DETAIL



SECTION A



\* UNLESS OTHERWISE SHOWN IN THE PLANS  
MAILBOX PLACEMENT SECTIONS



SNOW GUARD ~ WHEN REQUIRED, PLACE ON LEADING END OF SUPPORT (SEE DETAIL)

MAILBOX SUPPORT TYPE 1  
(WOOD POST SHOWN)  
FOR DETAILS, SEE STANDARD PLAN I-70.10

MAILBOX SUPPORTS TYPE 2

SPACING DETAIL

DRAWN BY: MARK SUJKA



NOTE: THIS PLAN IS NOT A LEGAL ENGINEERING DOCUMENT UNTIL ELECTRONICALLY SIGNED BY THE ENGINEER AND APPROVED FOR PUBLICATION IS FILED AT THE WASHINGTON STATE DEPARTMENT OF TRANSPORTATION. A COPY MAY BE OBTAINED UPON REQUEST.

**MAILBOX SUPPORT TYPE 2**  
**STANDARD PLAN H-70.20-01**

SHEET 2 OF 2 SHEETS

APPROVED FOR PUBLICATION  
**Pasco Bakotich III** 02-16-12  
 STATE DESIGN ENGINEER DATE  
 Washington State Department of Transportation