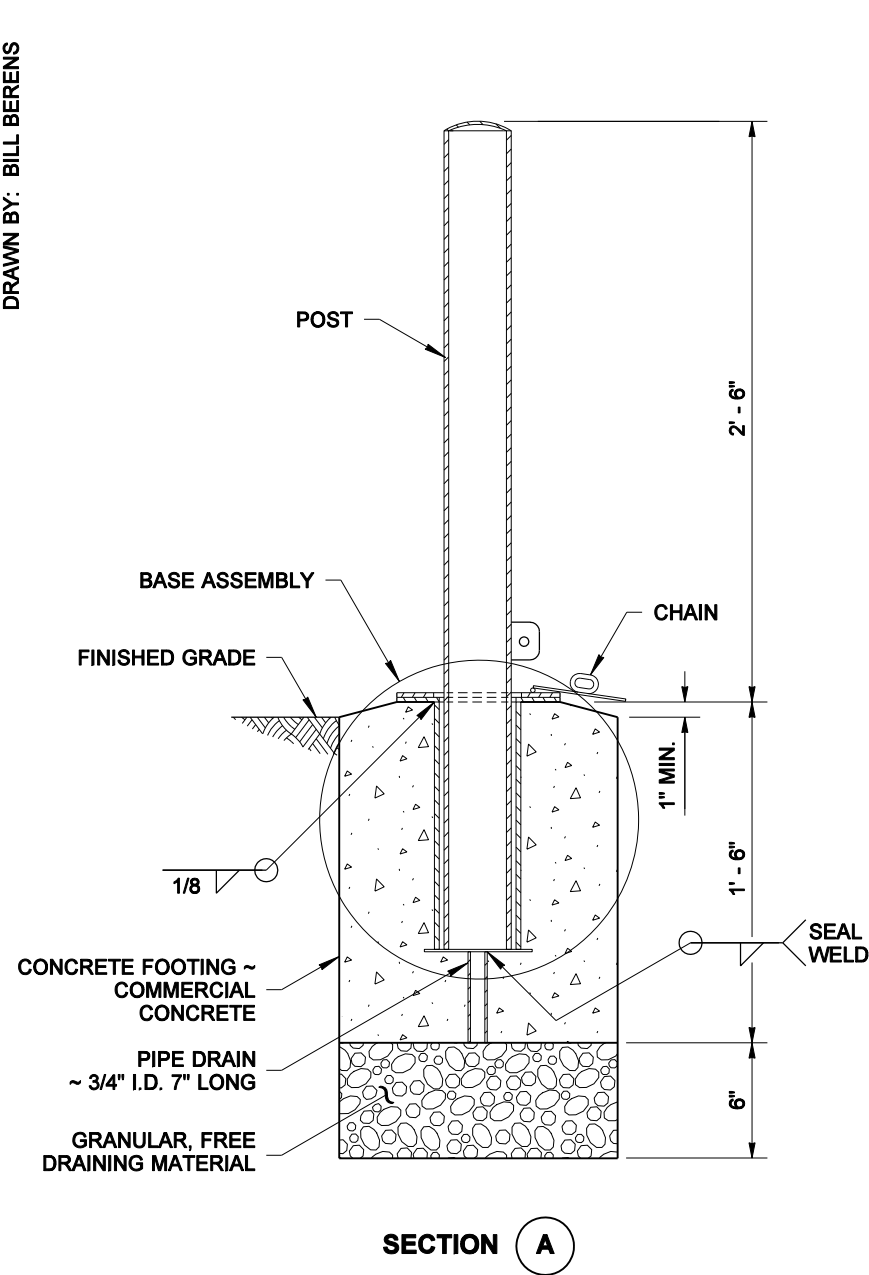
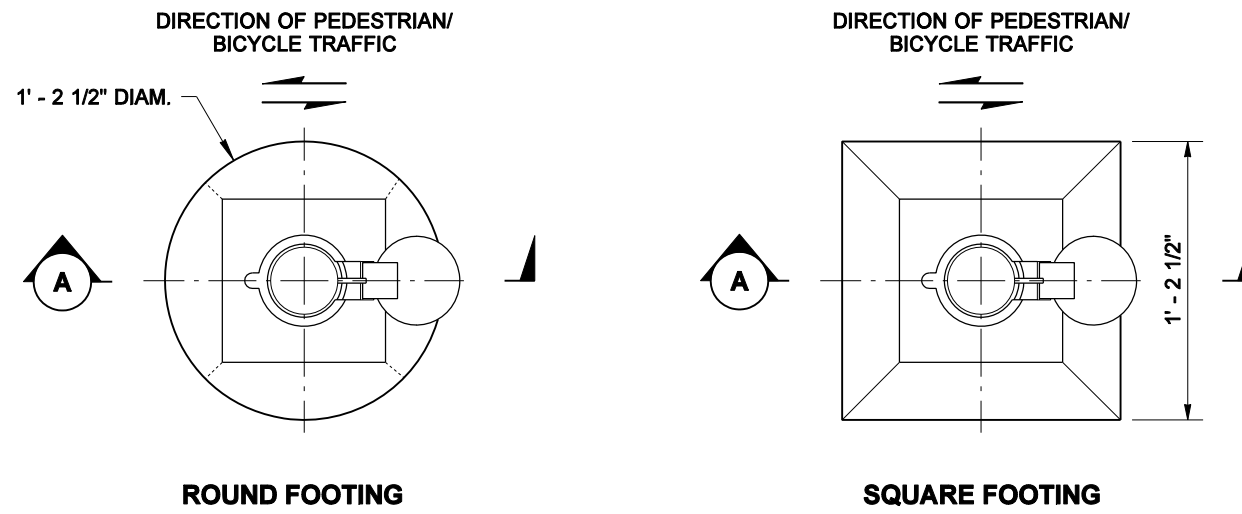


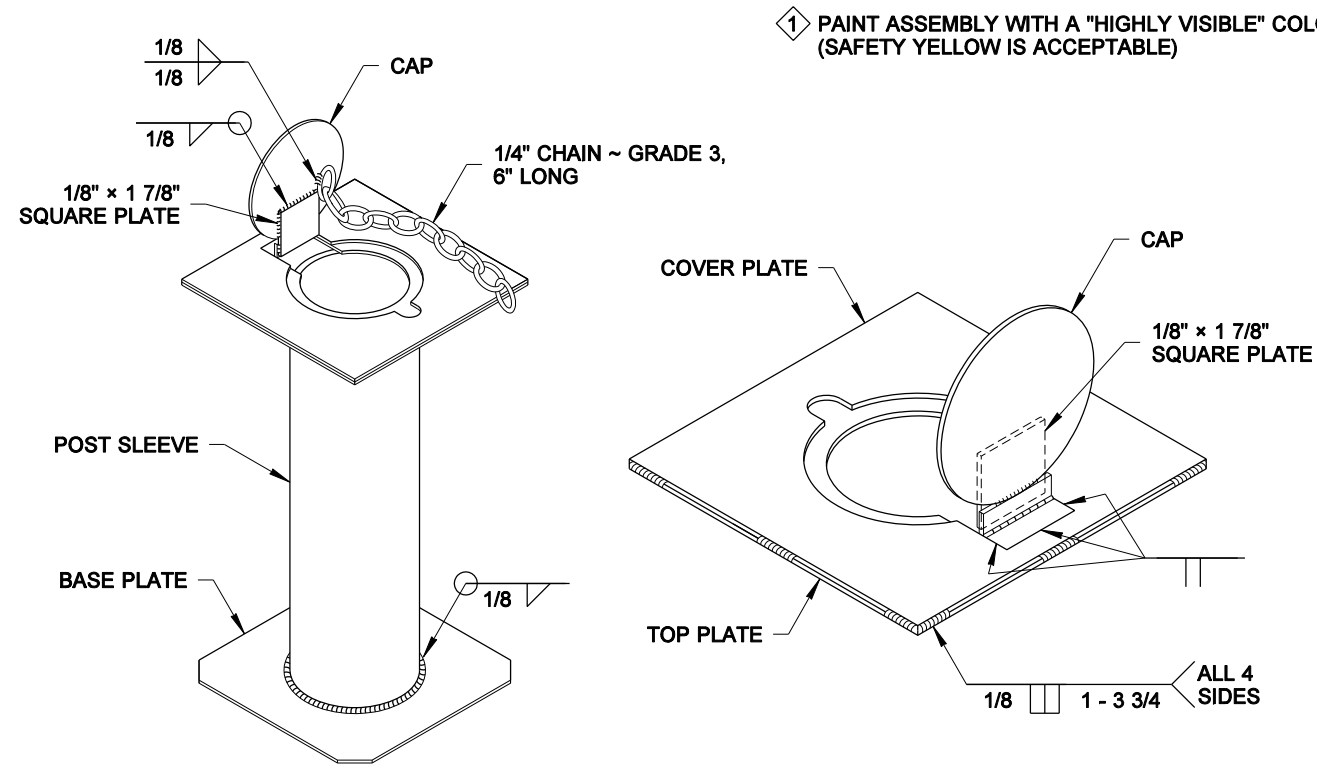
DRAWN BY: BILL BERENS



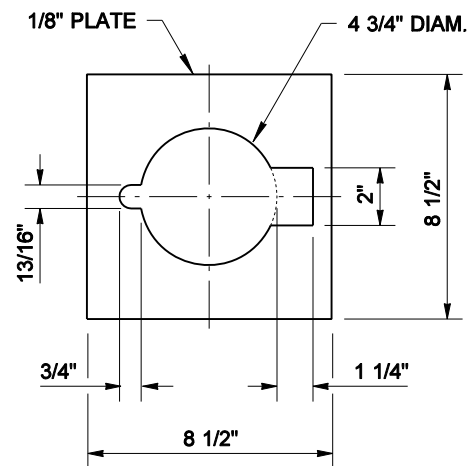
SECTION A



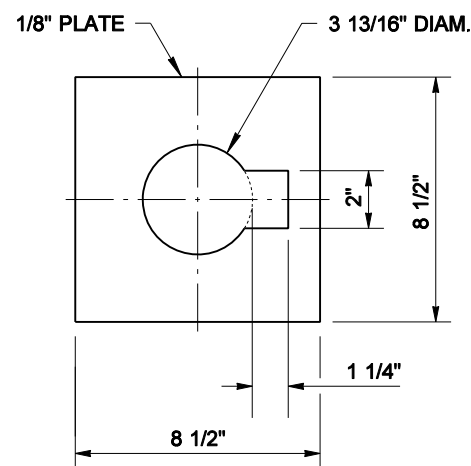
PLAN VIEW



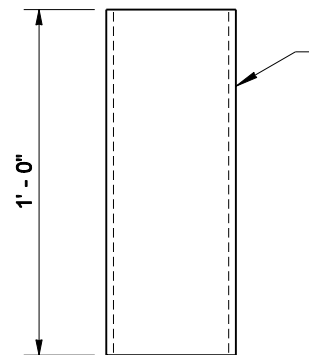
BASE ASSEMBLY



COVER PLATE

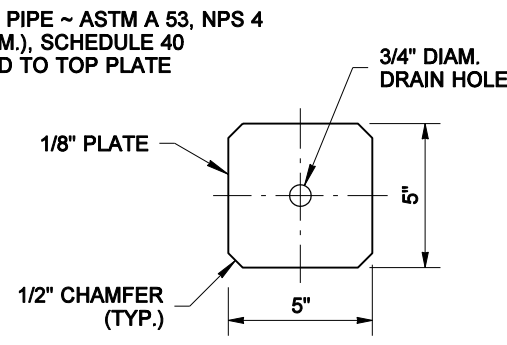


TOP PLATE

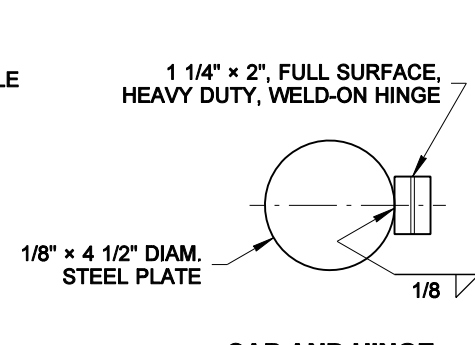


POST SLEEVE

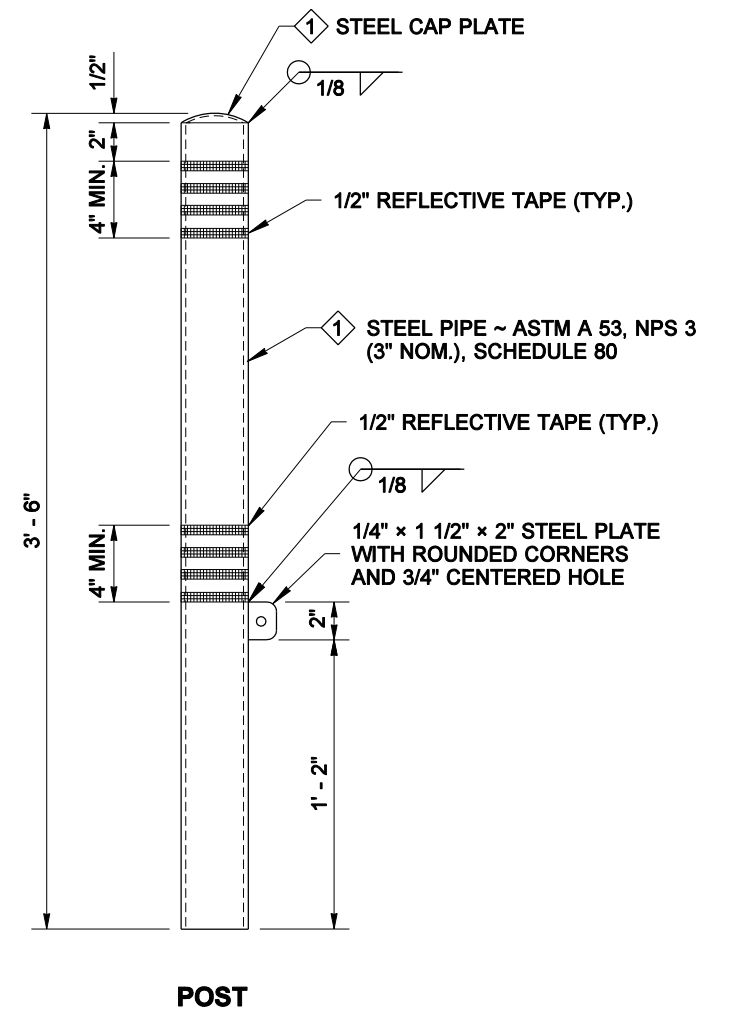
STEEL PIPE ~ ASTM A 53, NPS 4 (4" NOM.), SCHEDULE 40 ~ WELD TO TOP PLATE



BASE PLATE



CAP AND HINGE



POST

NOTE

This bollard does not have an effective breakaway design feature and cannot be installed within the Design Clear Zone.



EXPIRES JUNE 19, 2010

NOTE: THIS PLAN IS NOT A LEGAL ENGINEERING DOCUMENT. THE ENGINEER HAS NOT CONDUCTED A VISUAL CHECK OF THE PROJECT. THE ENGINEER HAS APPROVED THE DESIGN OF THIS FILE AT THE WASHINGTON STATE DEPARTMENT OF TRANSPORTATION. A COPY MAY BE OBTAINED UPON REQUEST.

BOLLARD TYPE 1

STANDARD PLAN H-60.10-01

SHEET 1 OF 1 SHEET

APPROVED FOR PUBLICATION

Pasco Bakotich III 07-03-08

STATE DESIGN ENGINEER DATE

Washington State Department of Transportation