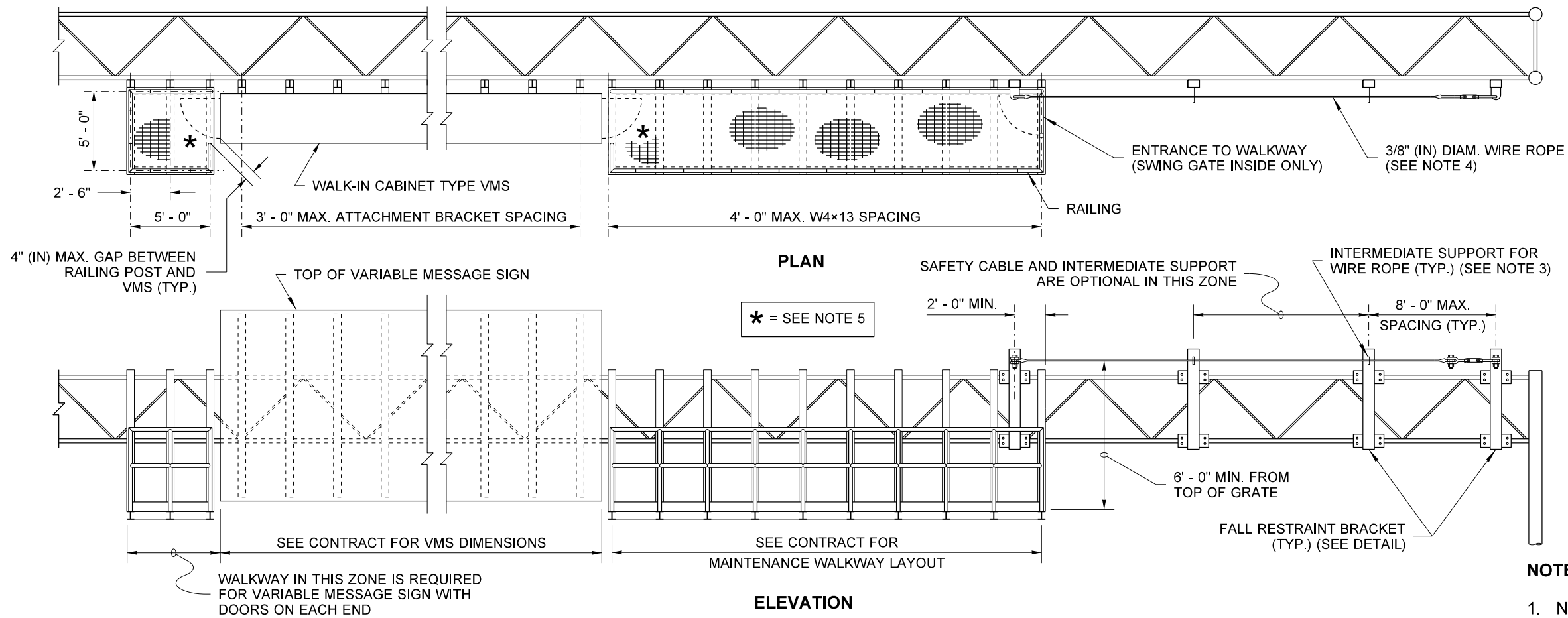


DRAWN BY: BILL BERENS



| MATERIAL SPECIFICATIONS | |
|---|--|
| PIPE | ASTM A 36 OR ASTM A 53 GRADE B, TYPE E OR S, OR ASTM A 500 GRADE B |
| PLATES AND SHAPES | ASTM A 36 |
| STRUCTURAL TUBING | ASTM A 500 GRADE B |
| GALVANIZING FOR PIPE, PLATES, SHAPES AND STEEL GRATING | AASHTO M 111 |
| HIGH STRENGTH BOLTS, NUTS, & WASHERS; INCL. MOUNTING BEAM BOLTS | STD SPEC. 9-06.5(3) |
| ALL OTHER BOLTS | STD SPEC. 9-06.5(1) |
| FASTENER GALVANIZING | ASTM F2329 |
| STEEL GRATING | ASTM A 36 |
| WIRE ROPE | ASTM A 603 W/ CLASS A WEIGHT ZINC COATED WIRES THROUGHOUT |

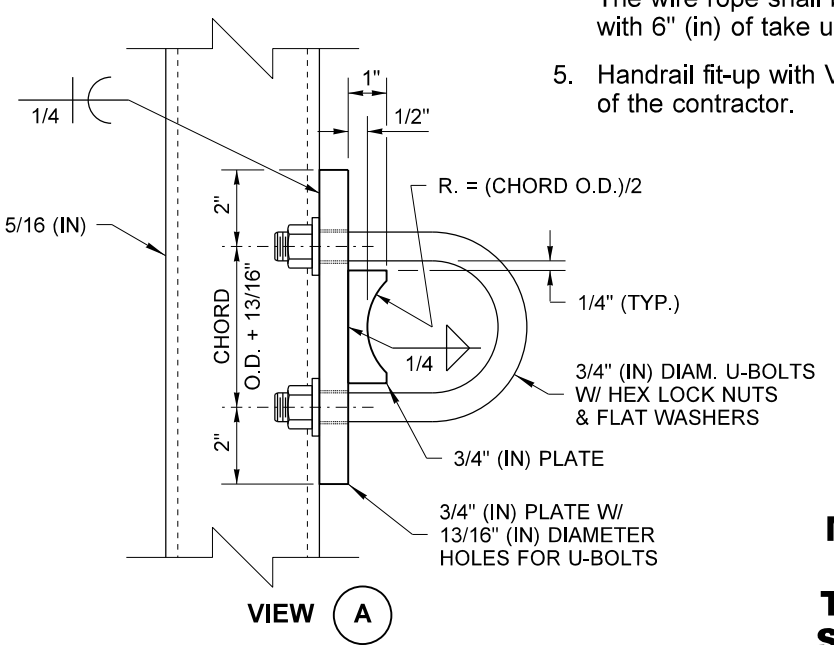
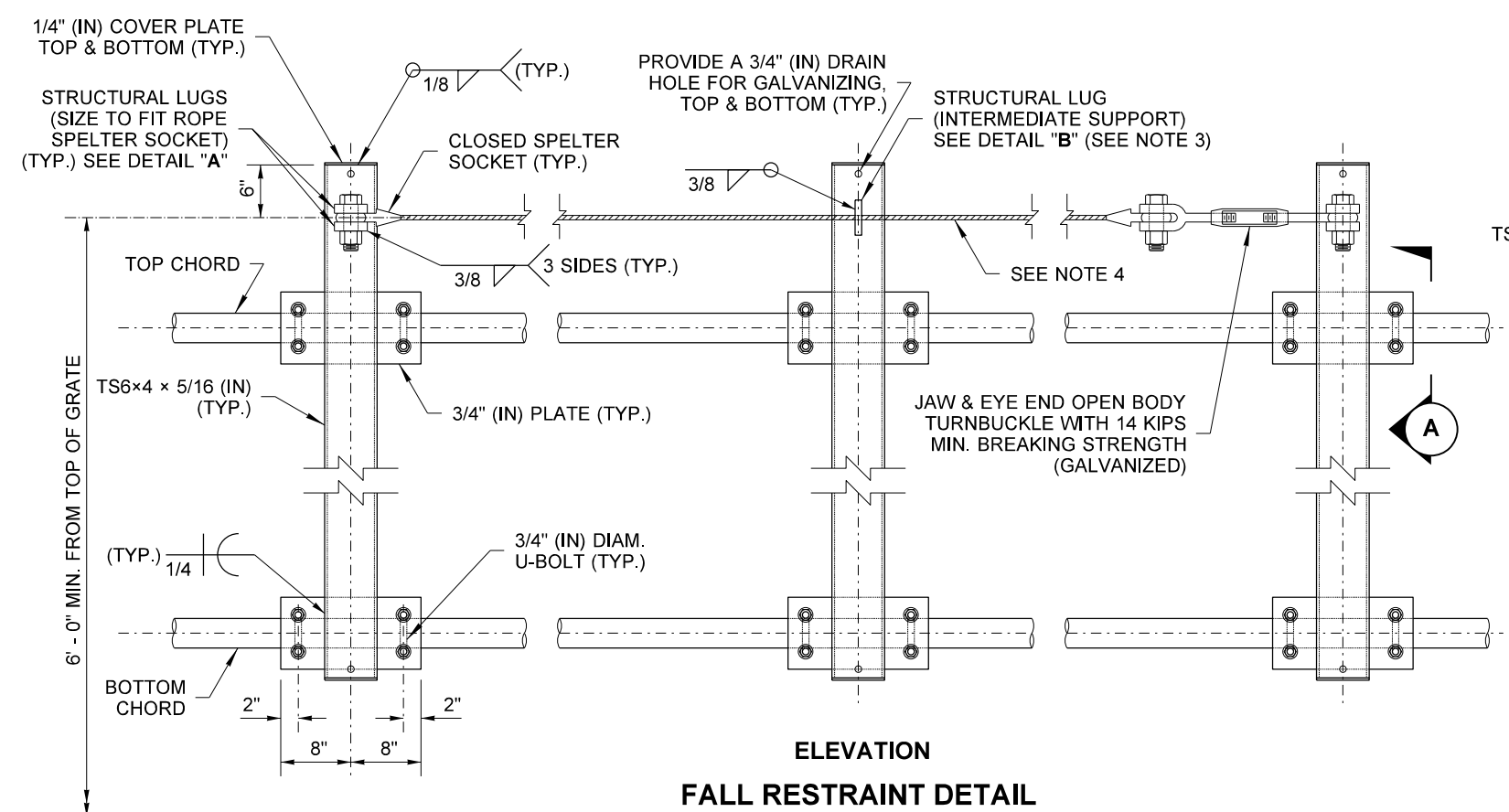
⚠ ALLOWABLE ALTERNATE MATERIAL: FEDERAL STANDARD RR-W-410F TYPE 6 CLASS 3 GALVANIZED.

NOTES

1. Not intended for use in front of static signs.
2. For maintenance walkway, railing, grating and toe plate details, see **Standard Plan G-95.10**.
3. Use two lanyards through intermediate wire rope support.
4. 3/8" (in) diameter wire rope with 14 kips min. breaking strength. The wire rope shall be installed with 450 lbs. of tension, and with 6" (in) of take up adjustment available in the turnbuckle.
5. Handrail fit-up with VMS door openings is the responsibility of the contractor.

MAINTENANCE WALKWAY INSTALLED ON TRUSS-TYPE SIGN BRIDGE

(WALKWAYS MAY BE USED WITH OTHER LAYOUTS THAN THAT SHOWN ABOVE)

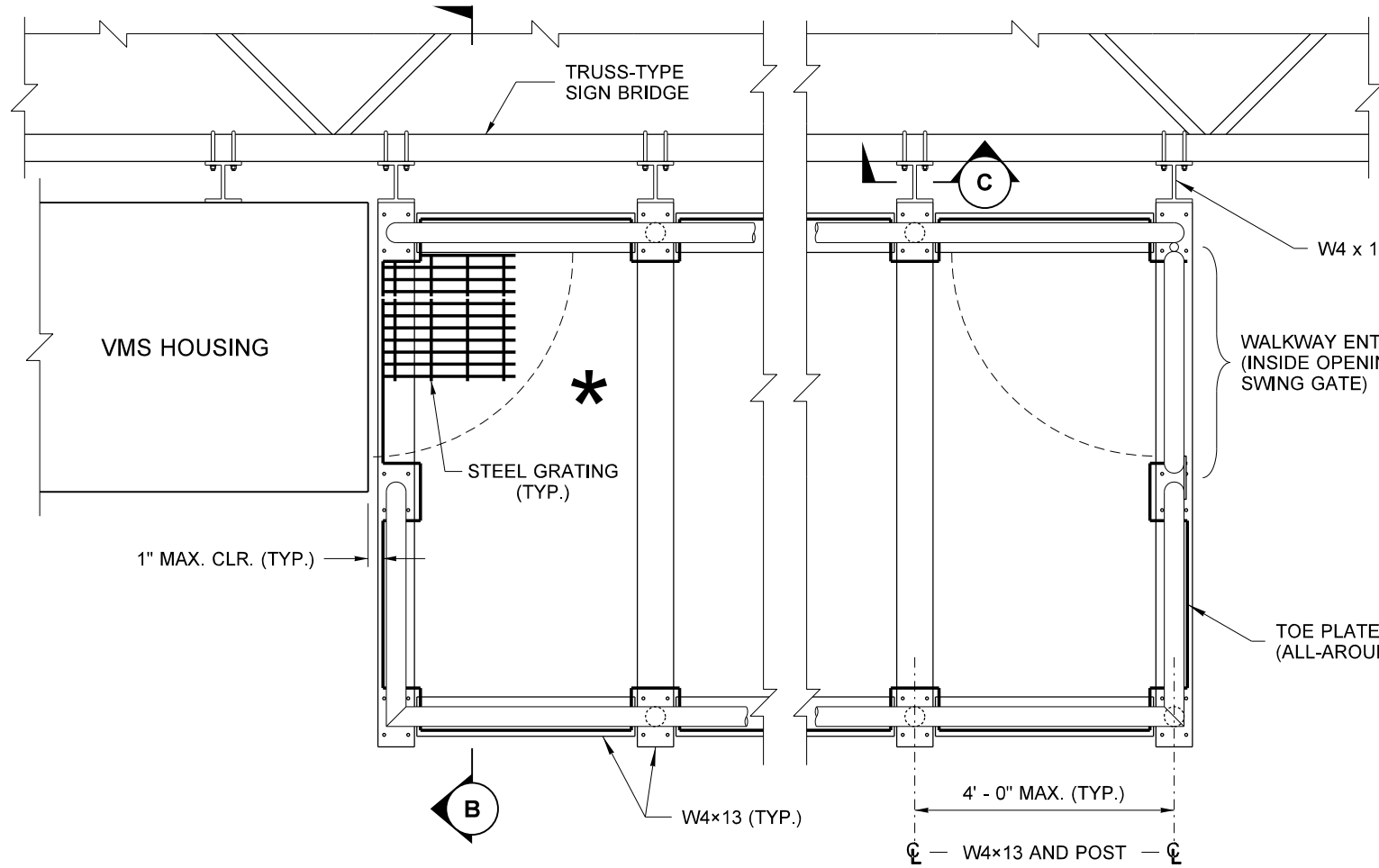


MAINTENANCE WALKWAY MOUNTING FOR TRUSS-TYPE SIGN BRIDGE STANDARD PLAN G-95.30-03

SHEET 1 OF 2 SHEETS

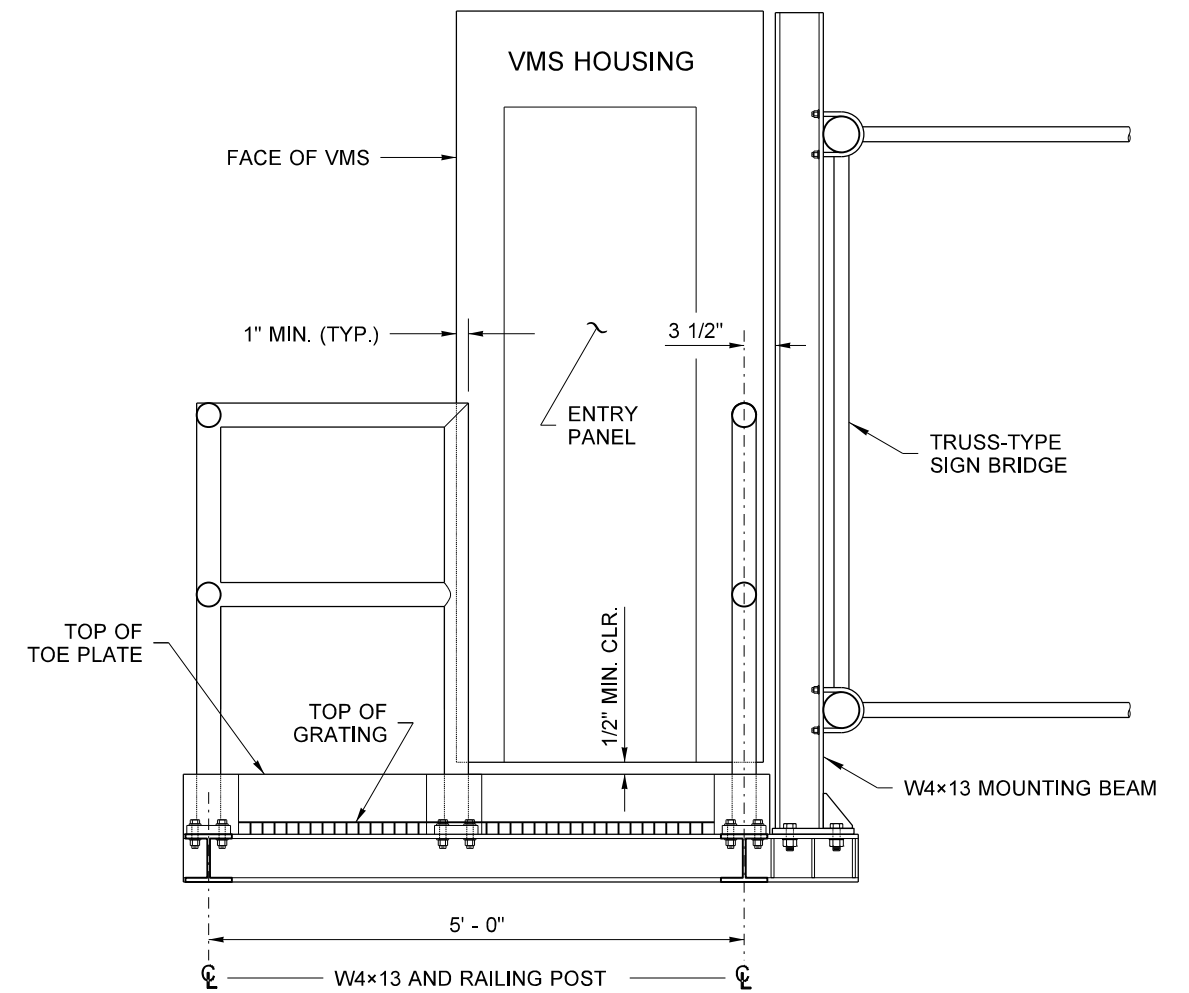
APPROVED FOR PUBLICATION

DRAWN BY: BILL BERENS

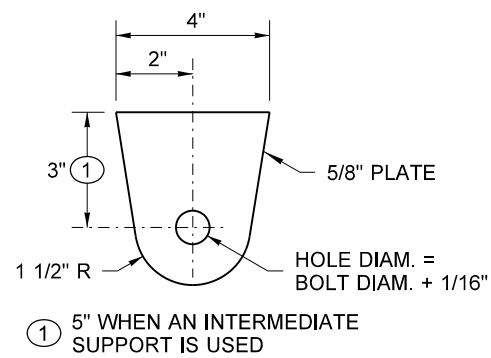


**MAINTENANCE WALKWAY
PARTIAL PLAN**

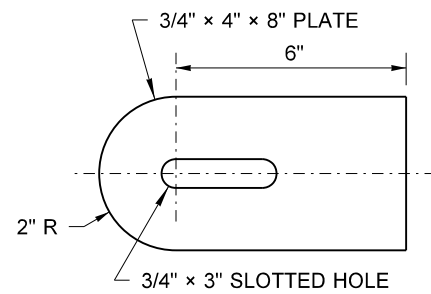
* = SEE NOTE 5,
LOCATED
ON SHEET 1



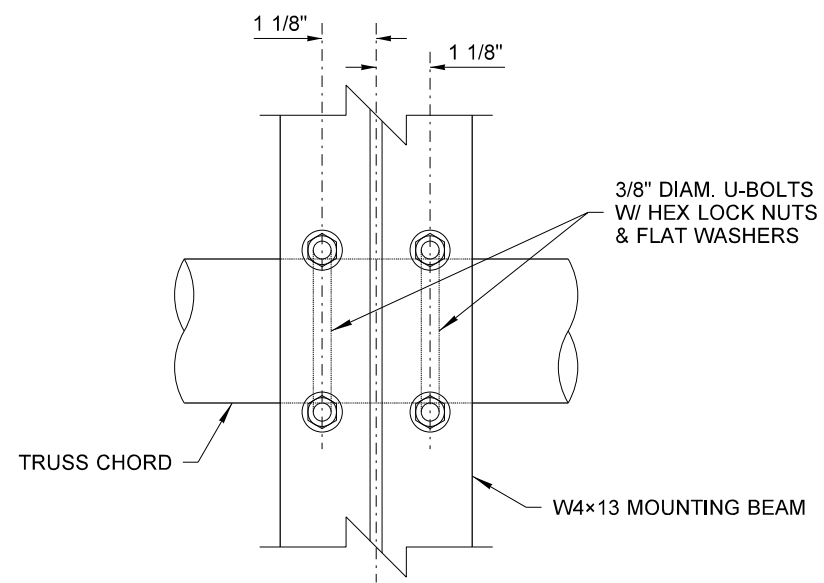
SECTION B



DETAIL "A"



DETAIL "B"



SECTION C



**MAINTENANCE WALKWAY
MOUNTING FOR
TRUSS-TYPE SIGN BRIDGE
STANDARD PLAN G-95.30-03**

SHEET 2 OF 2 SHEETS

APPROVED FOR PUBLICATION

STATE DESIGN ENGINEER
 Washington State Department of Transportation