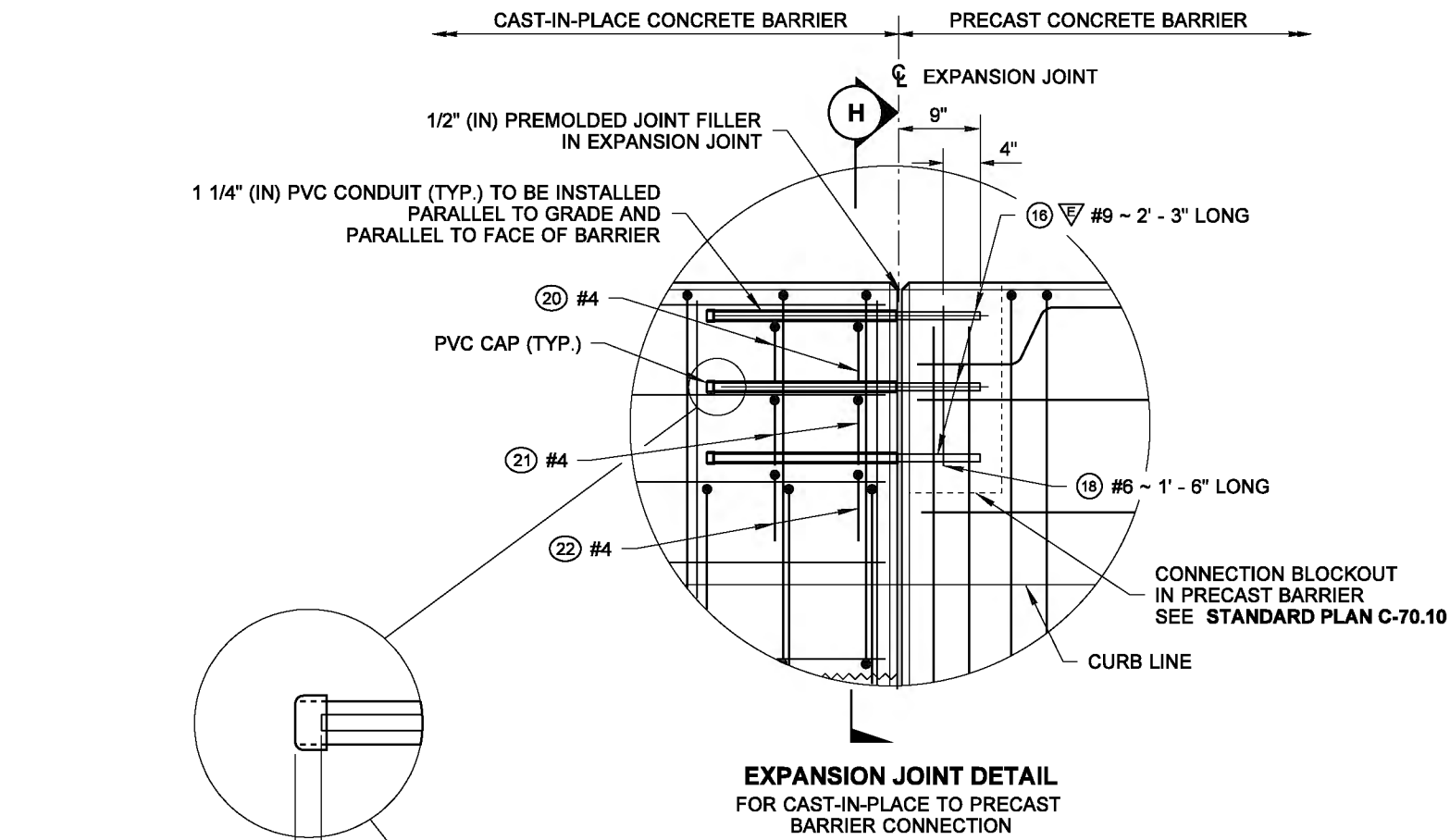
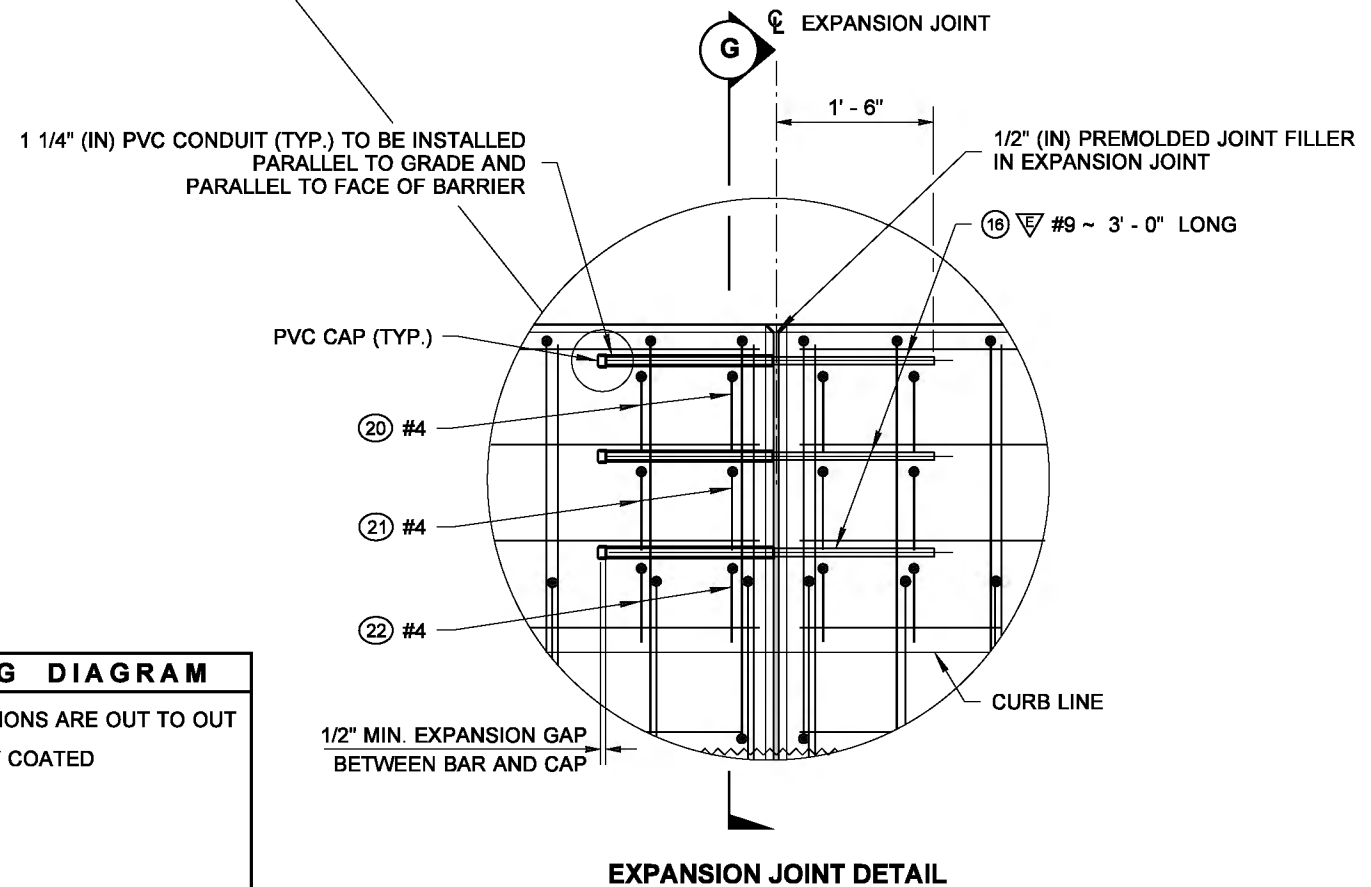


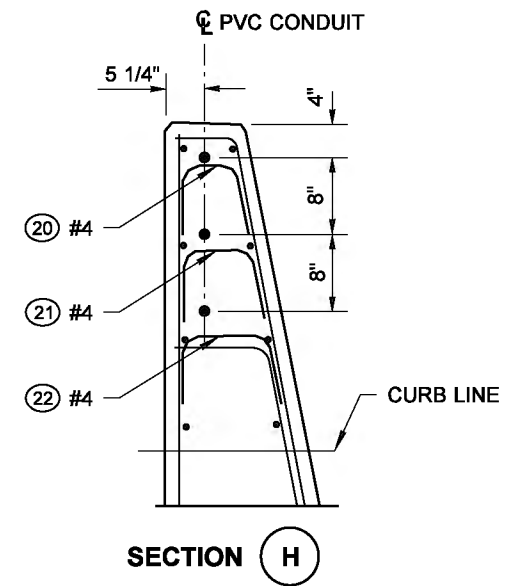
DRAWN BY: FERN LIDDELL



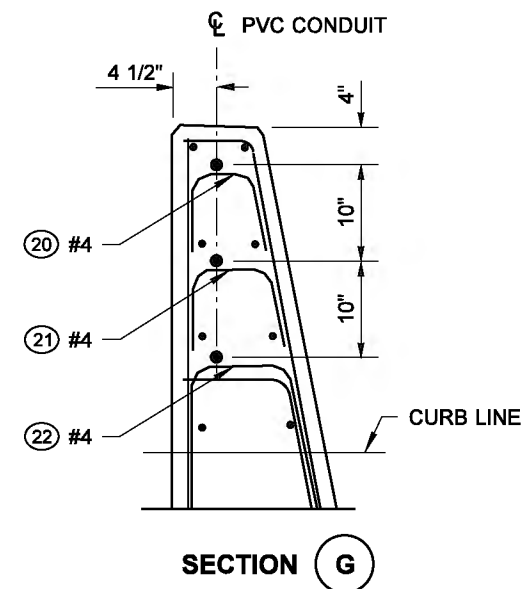
1/2" MIN. EXPANSION GAP BETWEEN BAR AND CAP



1/2" MIN. EXPANSION GAP BETWEEN BAR AND CAP



FOR DETAILS NOT SHOWN ~ SEE TYPICAL SECTION STANDARD PLAN D-3.15 OR D-3.16



FOR DETAILS NOT SHOWN ~ SEE TYPICAL SECTION STANDARD PLAN D-3.15 OR D-3.16

**NOTE**

1. Ensure that no concrete enters the PVC conduit during concrete placement.

**REINFORCING STEEL BENDING DIAGRAM**

ALL REINFORCING BARS SHOWN ON THIS PLAN SHALL BE AASHTO M 31 UNLESS OTHERWISE NOTED.

ALL DIMENSIONS ARE OUT TO OUT  
 = EPOXY COATED

(20) #4 L = 7"  
 (21) #4 L = 8 7/8"  
 (22) #4 L = 10 3/4"



**PERMANENT GEOSYNTHETIC WALL EXPANSION JOINT DETAILS STANDARD PLAN D-3.17-02**

SHEET 1 OF 1 SHEET

APPROVED FOR PUBLICATION

STATE DESIGN ENGINEER DATE  
 Washington State Department of Transportation