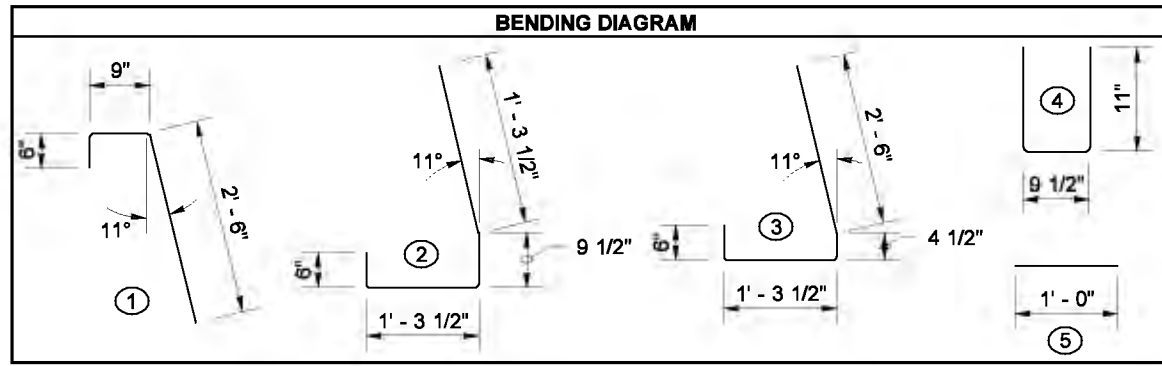
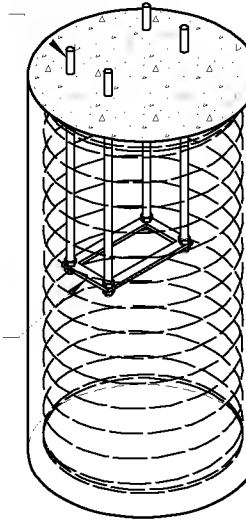


DRAWN BY: ADAM COCHRAN

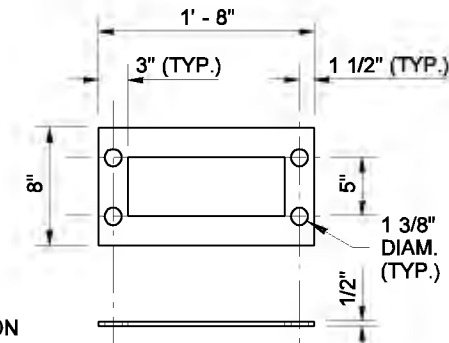
WALL HT H	TYPE 14SSA	TYPE 14SSB	TYPE 14SSC	TYPE 14SSD	WALL HT H
	BAR "A"	BAR "A"	BAR "A"	BAR "A"	
6' - 0"	#4 @ 15"	#4 @ 15"	#4 @ 15"	#4 @ 15"	6' - 0"
8' - 0"	#4 @ 15"	#4 @ 15"	#4 @ 15"	#4 @ 15"	8' - 0"
10' - 0"	#4 @ 15"	#4 @ 15"	#4 @ 15"	#4 @ 15"	10' - 0"
12' - 0"	#4 @ 15"	#4 @ 15"	#4 @ 15"	#4 @ 15"	12' - 0"
14' - 0"	#4 @ 15"	#4 @ 11"	#4 @ 15"	#4 @ 10"	14' - 0"
16' - 0"	#4 @ 10"	#4 @ 10"	#4 @ 10"	#5 @ 12"	16' - 0"
18' - 0"	#4 @ 10"	#5 @ 12"	#4 @ 10"	#5 @ 12"	18' - 0"



1 1/4" THREADED ROD WITH NUTS TOP & BOTTOM (TYP.)



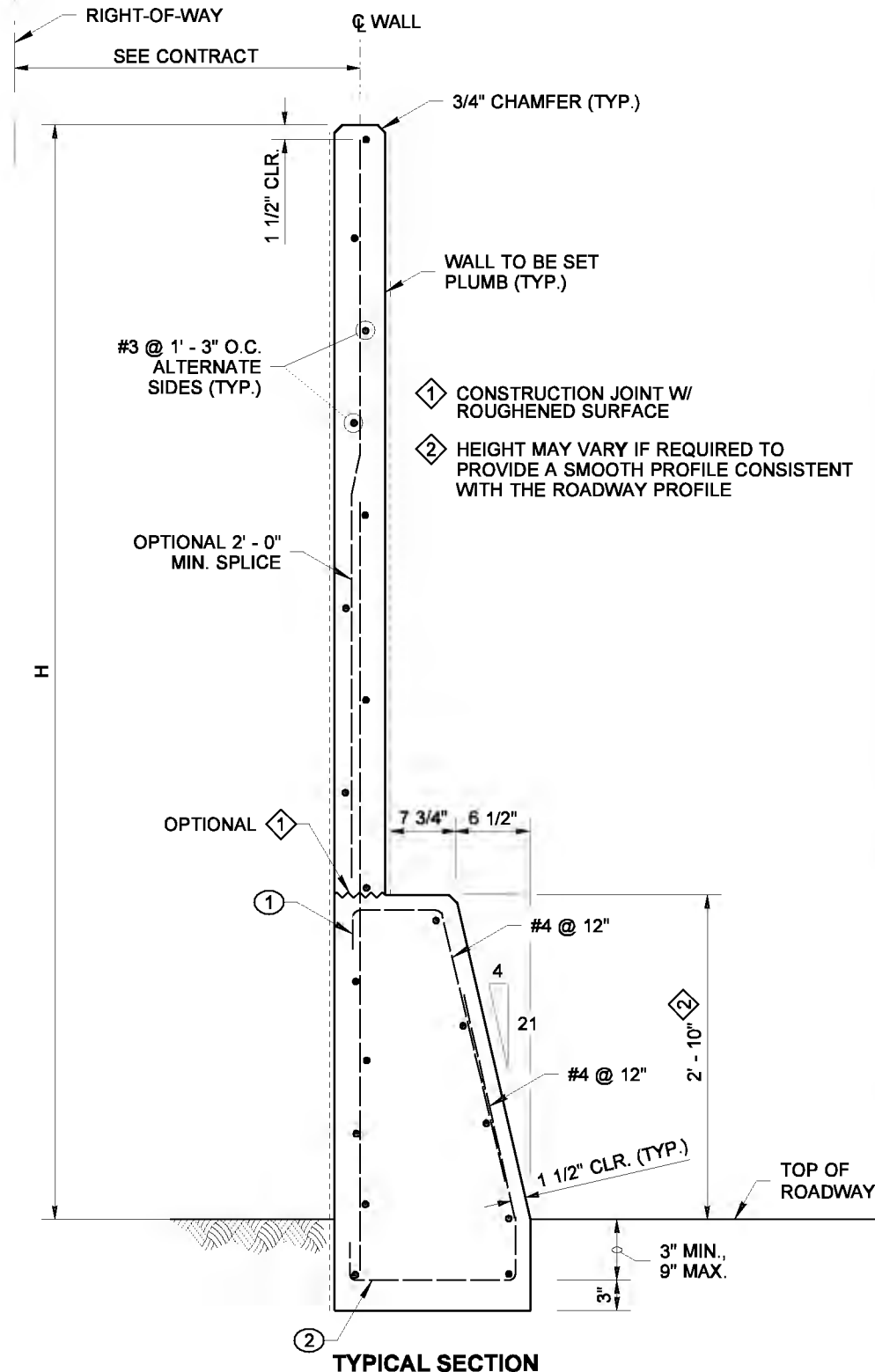
ISOMETRIC VIEW SHOWN FOR INSTALLATION



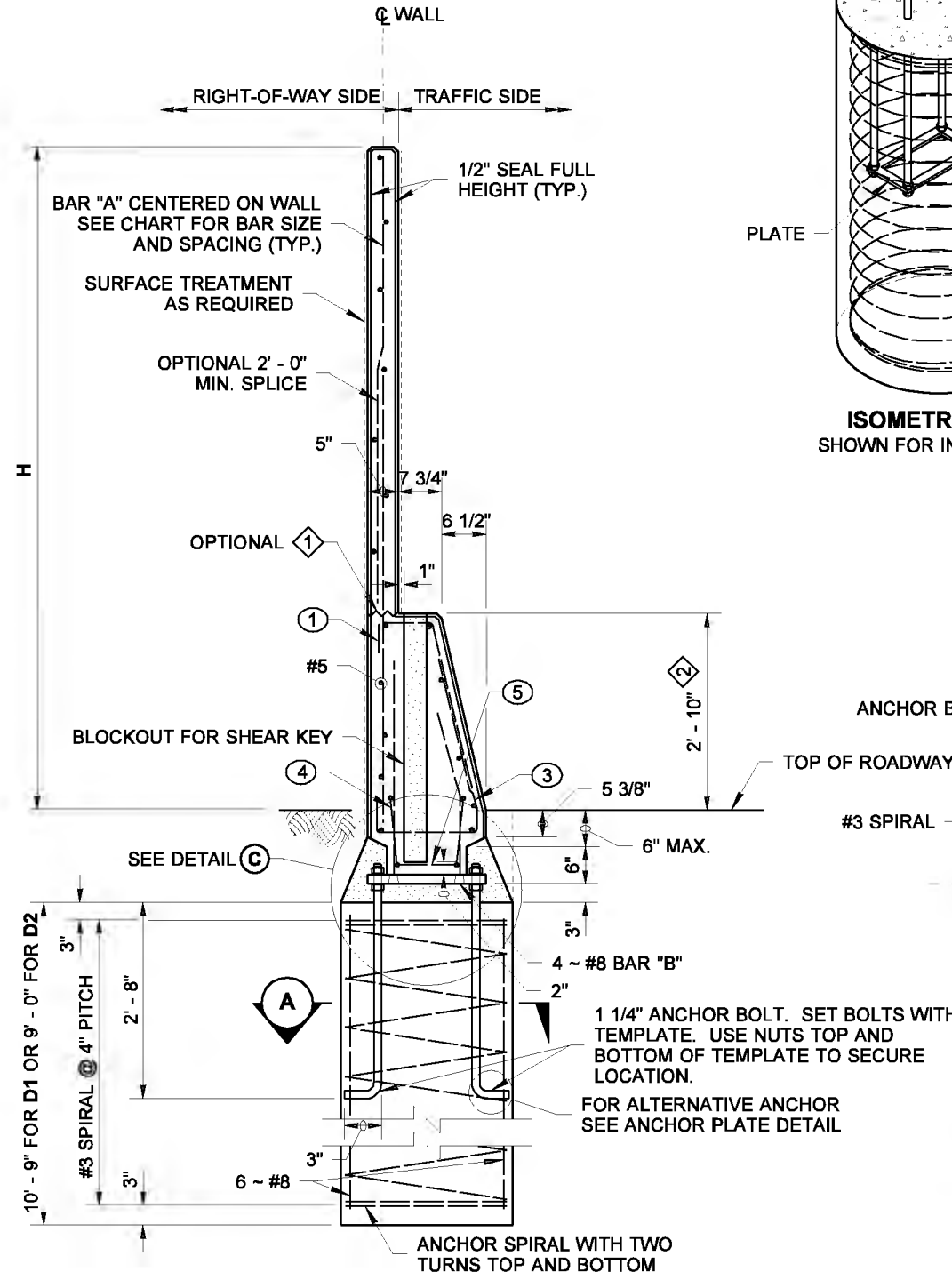
ALTERNATE ANCHOR DETAIL  
THREADED ROD WITH NUTS TOP AND BOTTOM

WIND EXPOSURE & VELOCITY		
NOISE BARRIER TYPE	WIND EXPOSURE	WIND VELOCITY (MPH)
14SSA	B1	80
14SSB	B1	90
14SSC	B2	80
14SSD	B2	90

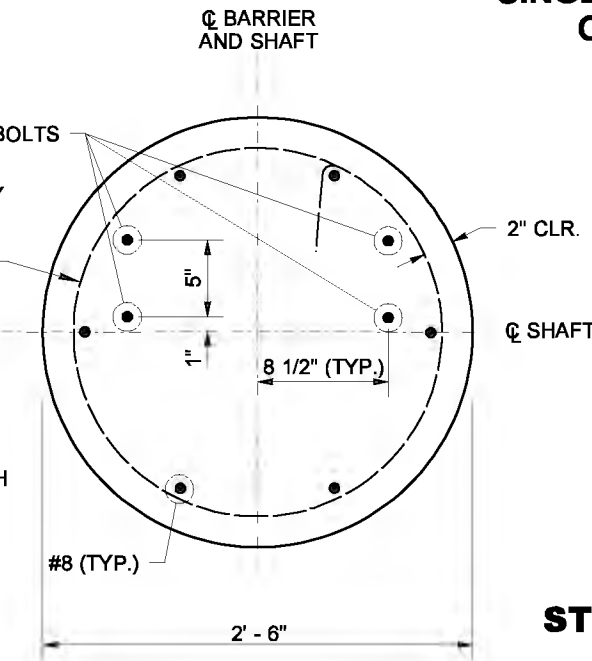
**PRECAST CONCRETE WALL W/  
SINGLE SLOPE TRAFFIC BARRIER  
ON SHAFT FOUNDATION**



TYPICAL SECTION



SECTION AT SHAFT SUPPORT



SECTION A

**NOTES**

- Wall to be designated Noise Barrier Wall Type 14SSA, 14SSB, 14SSC or 14SSD. The Contract specifies actual wall designations.
- For intermediate wall heights, use the next higher H.
- Panels shall have at least 3 feet level ground on each side.
- All joints shall be in full contact and sealed.
- Anchor Bolts, Nuts, Washers, Base Plate, and Bar B shall have a Protective Coating of one of the following: Hot Dipped Galvanizing AASHTO M 232 for Hardware; AASHTO M 111 for Washers and Plates; Mechanical Galvanizing AASHTO M 298 CL 55, or Zinc Rich Paint, Paint threads and nuts after installation.
- The bottom 9" of Bar "B" shall be painted with one coat of Formula A-6-86 Zinc Dust Oxide Primer OR, one coat of Formula A-11-99 Primer.
- The Contract specifies actual foundation requirements D1 or D2.



EXPIRES AUGUST 23, 2006

**NOISE BARRIER WALL  
TYPE 14SS  
STANDARD PLAN D-2.48-00**

SHEET 1 OF 2 SHEETS

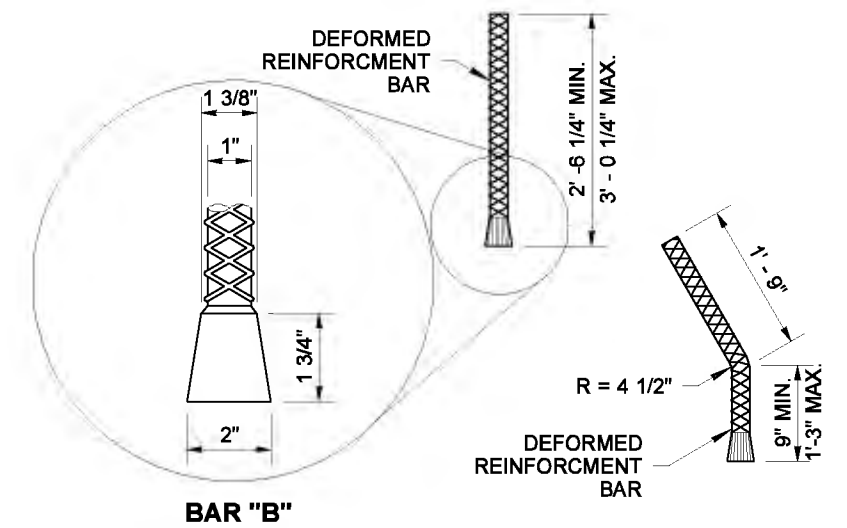
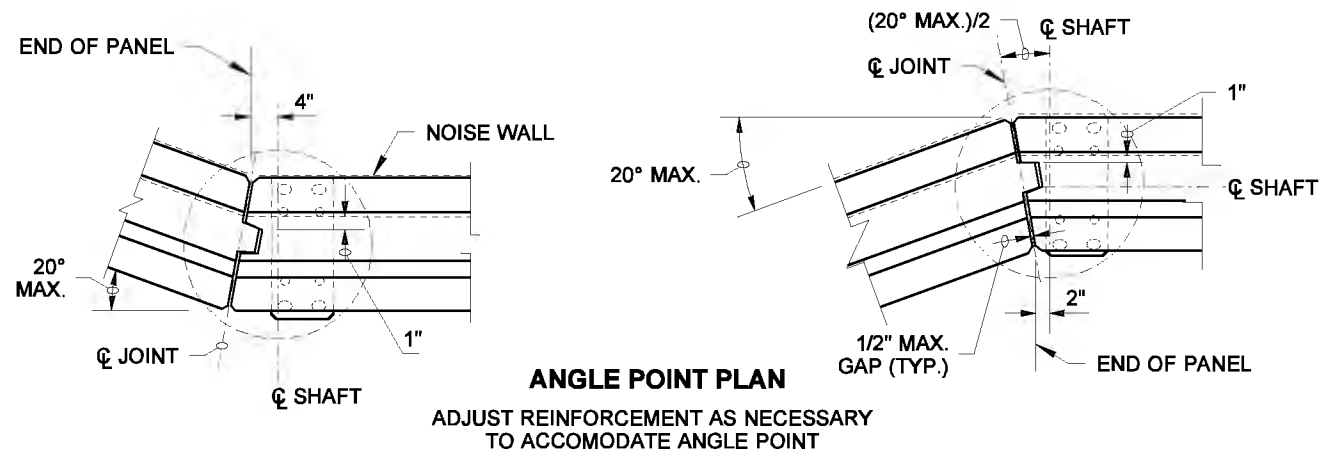
APPROVED FOR PUBLICATION

**Harold J. Peterfeso** 11-10-05

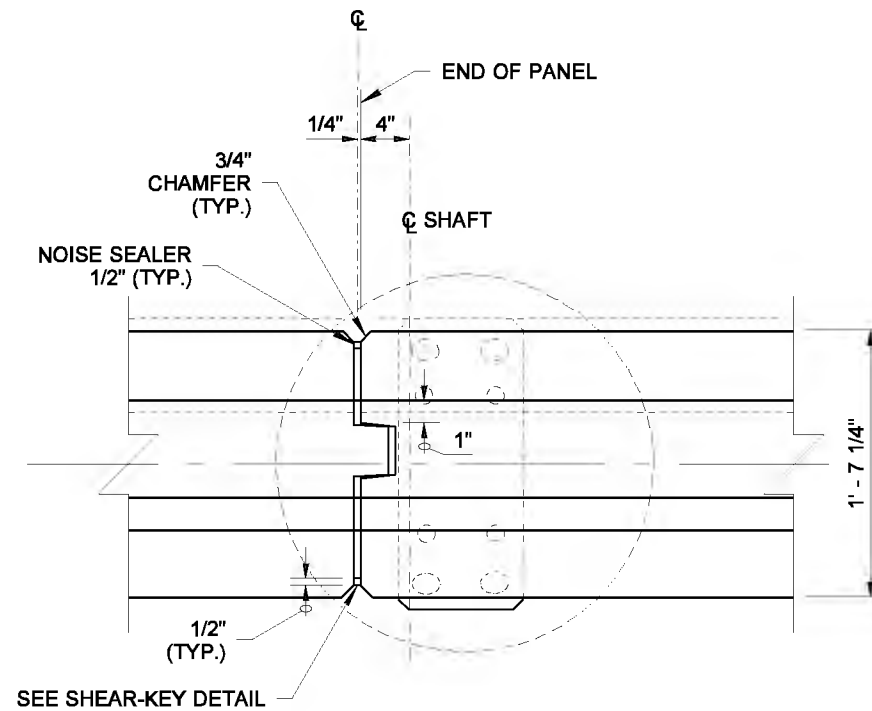
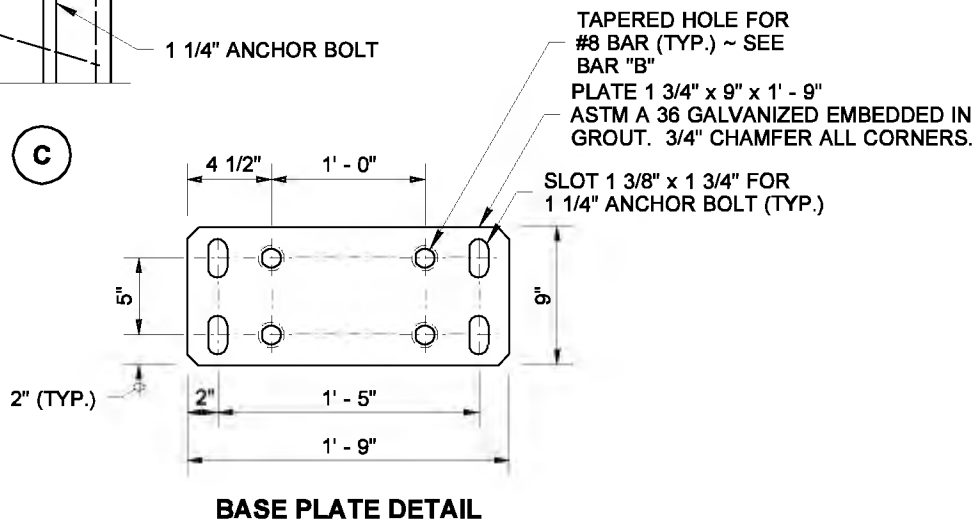
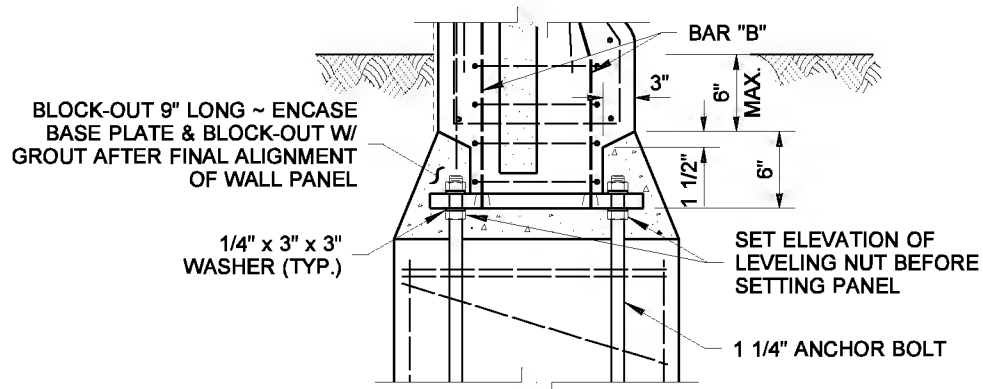
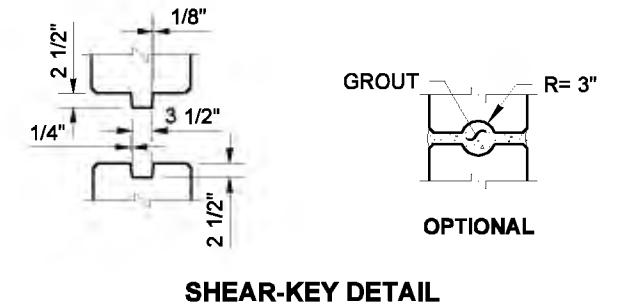
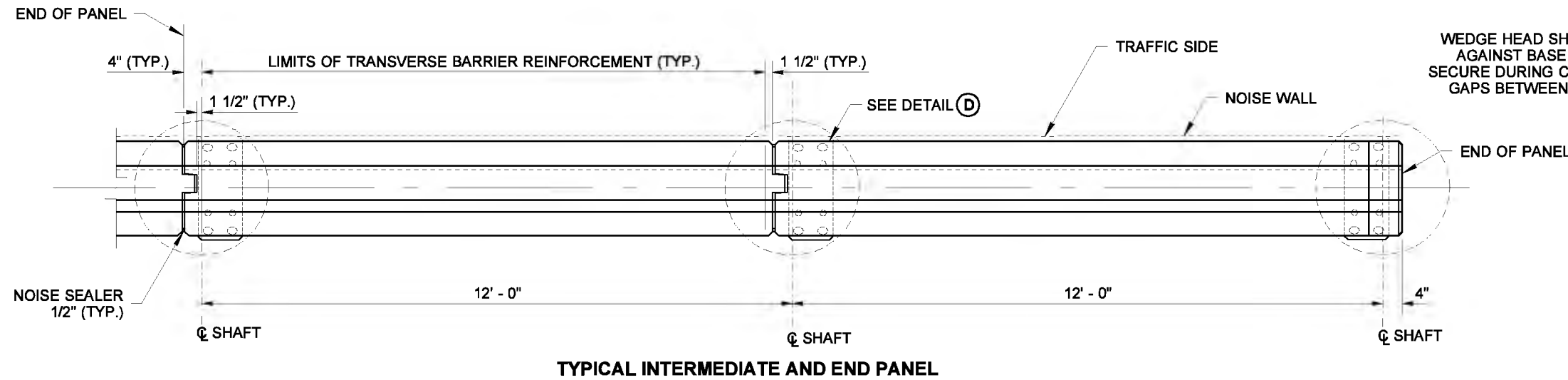
STATE DESIGN ENGINEER DATE



NOTE: THIS PLAN IS NOT A LEGAL ENGINEERING DOCUMENT. BEFORE USING THIS PLAN OR ANY OTHER DOCUMENT, THE ENGINEER AND APPROVED FOR PUBLICATION IS KEPT ON FILE AT THE WASHINGTON STATE DEPARTMENT OF TRANSPORTATION. A COPY MAY BE OBTAINED UPON REQUEST.



WEDGE HEAD SHALL BEAR FIRMLY AND UNIFORMLY AGAINST BASE PLATE. BAR "B" SHALL BE HELD SECURE DURING CONCRETE PLACEMENT TO PREVENT GAPS BETWEEN WEDGE HEAD AND BASE PLATE.



**PRECAST CONCRETE WALL W/ SINGLE SLOPE TRAFFIC BARRIER ON SHAFT FOUNDATION**



NOTE: THIS PLAN IS NOT A LEGAL ENGINEERING DOCUMENT UNLESS IT IS USED IN CONNECTION WITH A PROJECT FOR WHICH THE ENGINEER HAS BEEN LICENSED AND APPROVED FOR PUBLICATION. IT MUST BE FILED AT THE WASHINGTON STATE DEPARTMENT OF TRANSPORTATION. A COPY MAY BE OBTAINED UPON REQUEST.

EXPIRES AUGUST 23, 2006

**NOISE BARRIER WALL TYPE 14SS**  
**STANDARD PLAN D-2.48-00**

SHEET 2 OF 2 SHEETS

APPROVED FOR PUBLICATION

**Harold J. Peterfeso** 11-10-05

STATE DESIGN ENGINEER DATE

