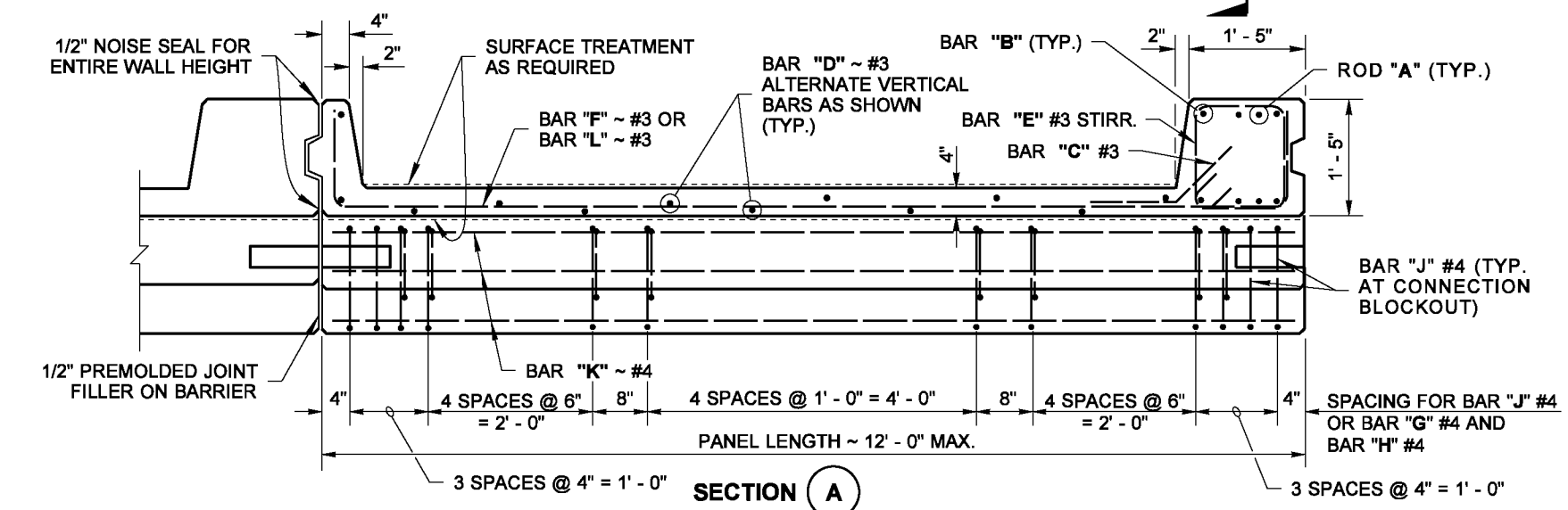
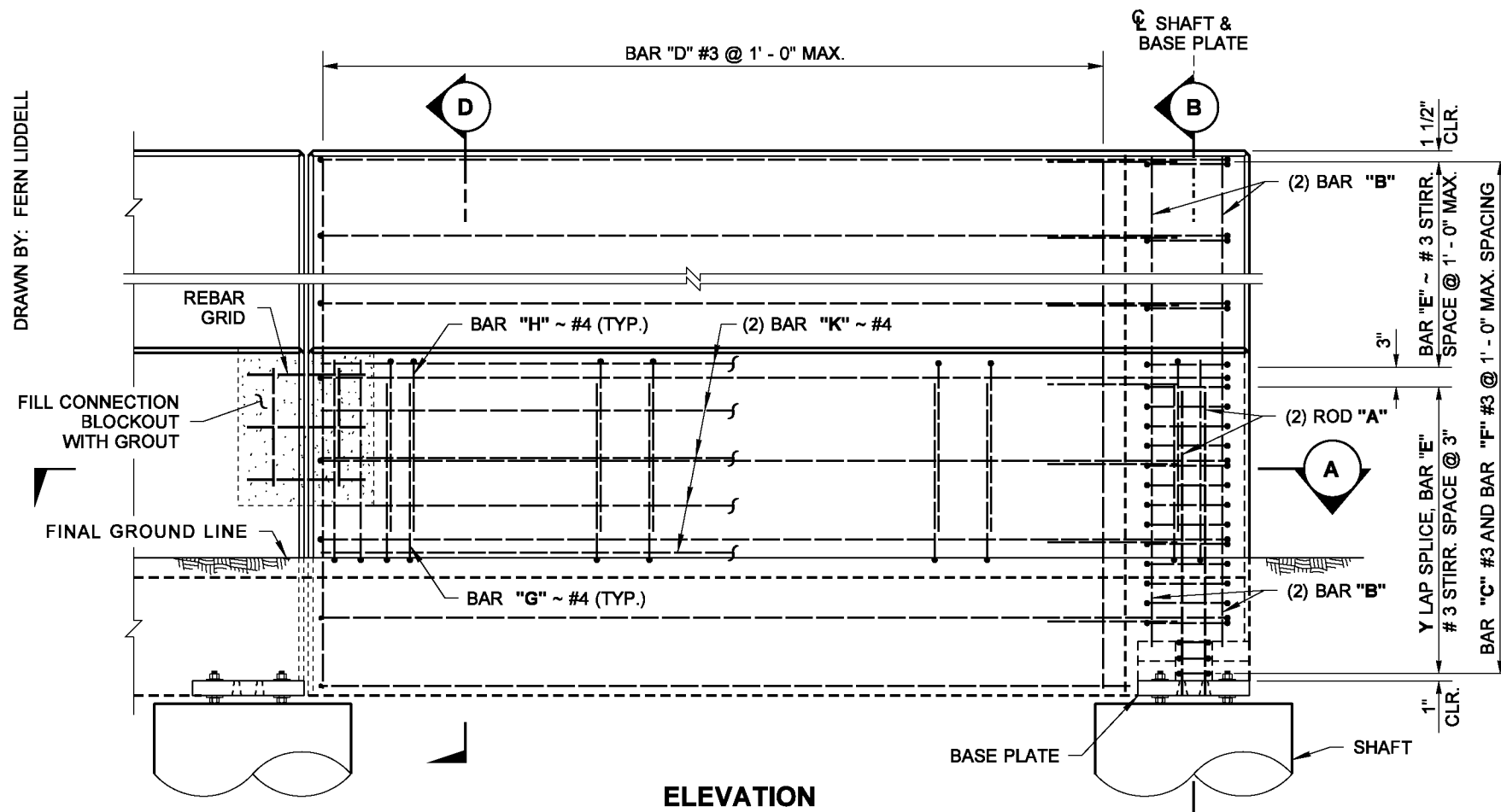
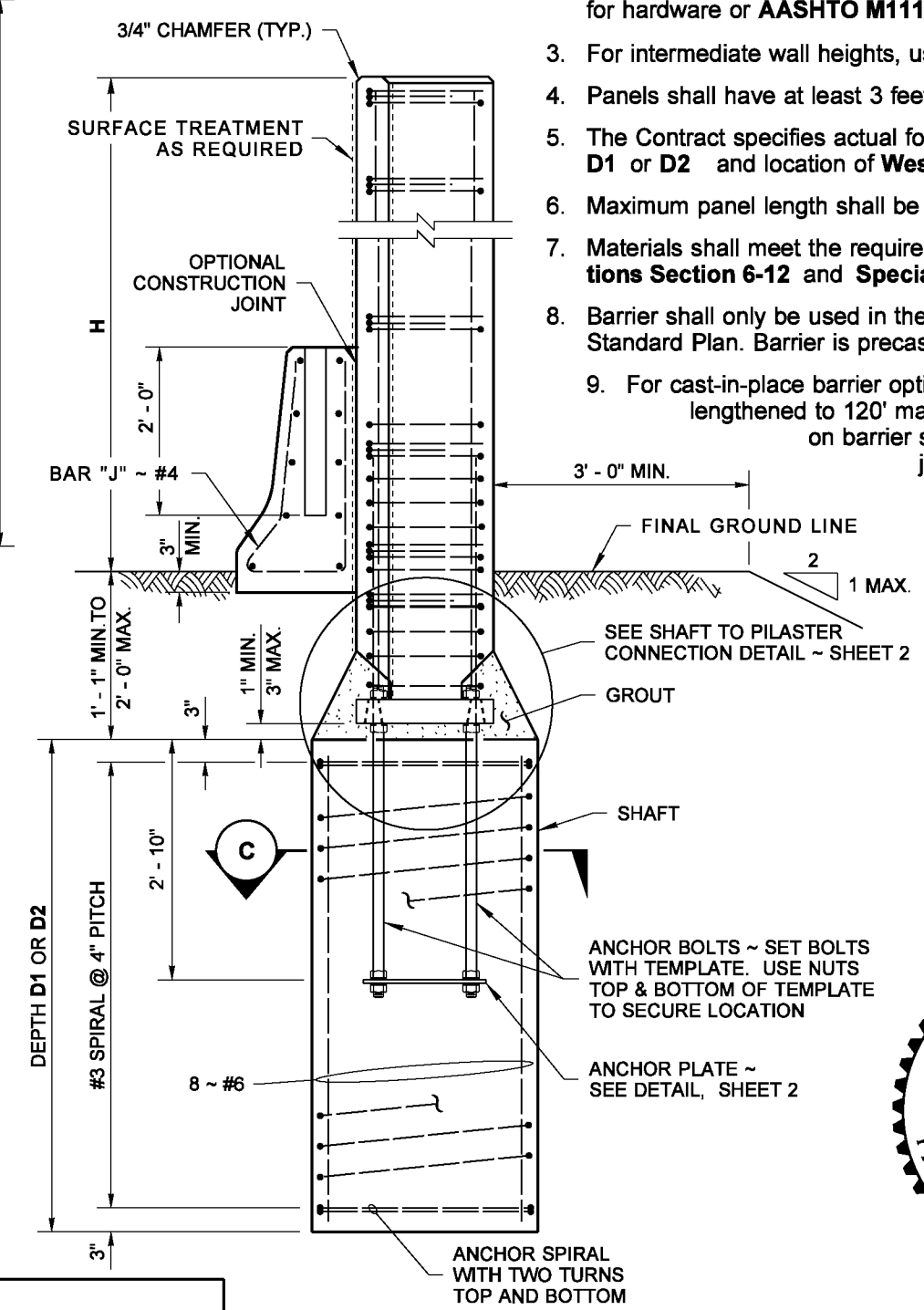


DRAWN BY: FERN LIDDELL



* ONLY ANCHOR BOLT OPTION FOR ROD "A" ALLOWED ~ WEDGE HEAD OPTION NOT ALLOWED

EXPOSED WALL HT H	WESTERN WASHINGTON						BASE PLATE			EASTERN WASHINGTON									
	SHAFT DEPTH		ROD "A"	BAR "B"	LAP-SPLICE Y	ANCHOR BOLT DIAM.	F	Q	T	SHAFT DEPTH	ROD "A" DIAM.	BAR "B"	LAP-SPLICE Y	ANCHOR BOLT DIAM.	BASE PLATE				
	D1	D2													D1	D2	F	Q	T
6' - 0"	7' - 9"	6' - 3"	3/4"	4 ~ #4	3' - 0"	3/4"	1 1/8"	1 21/32"	1 1/2"	6' - 0"	7' - 9"	6' - 3"	3/4"	4 ~ #4	3' - 3"	3/4"	1 1/8"	1 21/32"	1 1/2"
8' - 0"	7' - 9"	6' - 3"	3/4"	4 ~ #4	3' - 0"	3/4"	1 1/8"	1 21/32"	1 1/2"	8' - 0"	7' - 9"	6' - 3"	3/4"	4 ~ #4	3' - 3"	3/4"	1 1/8"	1 21/32"	1 1/2"
10' - 0"	7' - 9"	6' - 3"	3/4"	4 ~ #5	3' - 0"	3/4"	1 1/8"	1 21/32"	1 1/2"	10' - 0"	7' - 9"	6' - 3"	3/4"	4 ~ #4	4' - 0"	3/4"	1 1/8"	1 21/32"	1 1/2"
12' - 0"	8' - 0"	6' - 9"	7/8"	4 ~ #6	3' - 9"	7/8"	1 1/8"	1 21/32"	1 1/2"	12' - 0"	7' - 9"	6' - 3"	3/4"	4 ~ #5	4' - 0"	3/4"	1 1/8"	1 21/32"	1 1/2"
14' - 0"	9' - 0"	7' - 3"	1"	4 ~ #6	6' - 0"	1"	1 3/8"	2"	2"	14' - 0"	8' - 0"	6' - 6"	7/8"	4 ~ #6	4' - 0"	7/8"	1 1/8"	1 21/32"	1 1/2"
16' - 0"	9' - 9"	8' - 0"	1 1/4"	4 ~ #6	8' - 0"	1 1/8"	1 3/8"	2"	2"	16' - 0"	8' - 6"	7' - 3"	1"	4 ~ #6	6' - 0"	1"	1 3/8"	2"	2"
18' - 0"	10' - 3"	8' - 6"	1 1/4"	4 ~ #6	10' - 0"	1 1/4"	*	*	2 1/4"	18' - 0"	9' - 3"	7' - 9"	1 1/8"	4 ~ #7	6' - 0"	1 1/8"	1 3/8"	2"	2"



NOTES

- All rods "A" and Anchor bolts shall be per ASTM F1554 grade 105.
- Anchor Bolts, Nuts, Washers and Rod "A" shall have a protective coating of either Hot Dipped Galvanizing per AASHTO M232 for hardware or AASHTO M111 for Washers and Plates.
- For intermediate wall heights, use the next higher "H".
- Panels shall have at least 3 feet of level ground on each side.
- The Contract specifies actual foundation requirements for D1 or D2 and location of Western WA or Eastern WA.
- Maximum panel length shall be 12 feet.
- Materials shall meet the requirements of Standard Specifications Section 6-12 and Special Provisions Section 6-12.
- Barrier shall only be used in the configuration shown in this Standard Plan. Barrier is precast as shown.
- For cast-in-place barrier option, continuous barrier can be lengthened to 120' max. 1/2" premolded joint filler on barrier shall be replaced with dummy joints adjacent at panel joints.



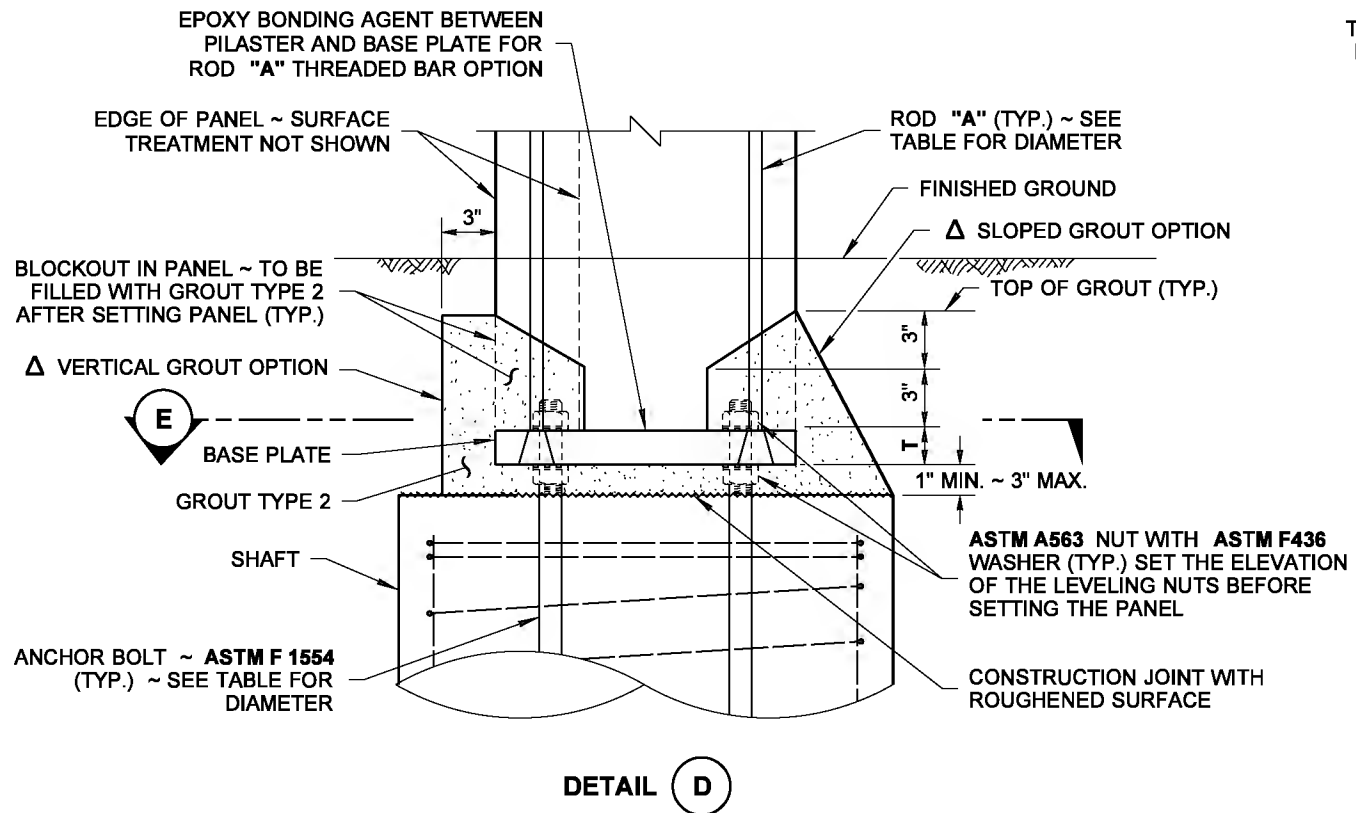
NOISE BARRIER WALL TYPE 14
STANDARD PLAN D-2.46-01

SHEET 1 OF 3 SHEETS

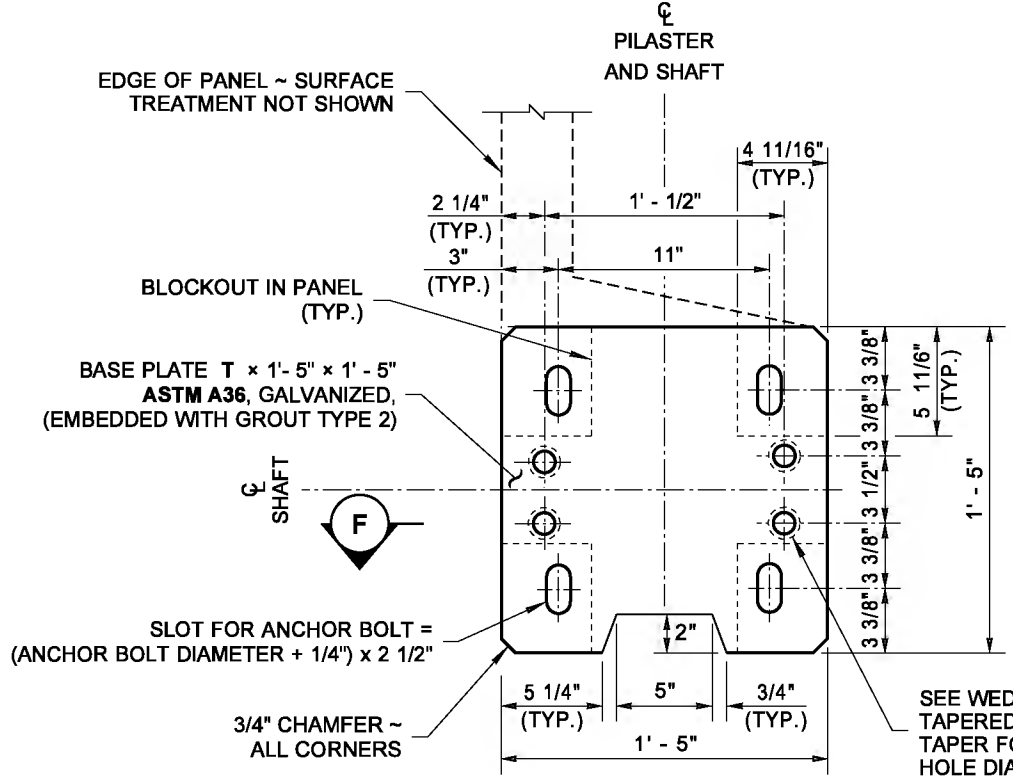
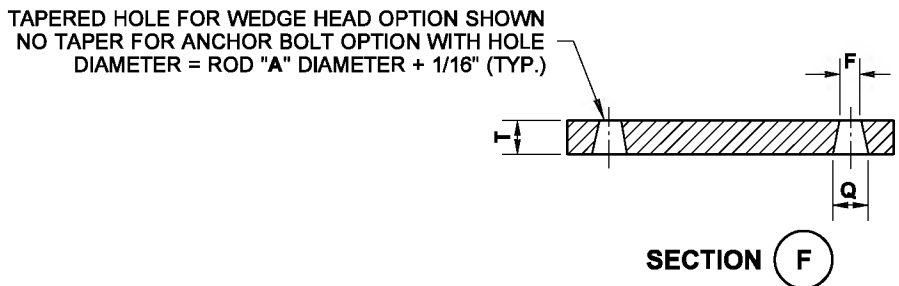
APPROVED FOR PUBLICATION



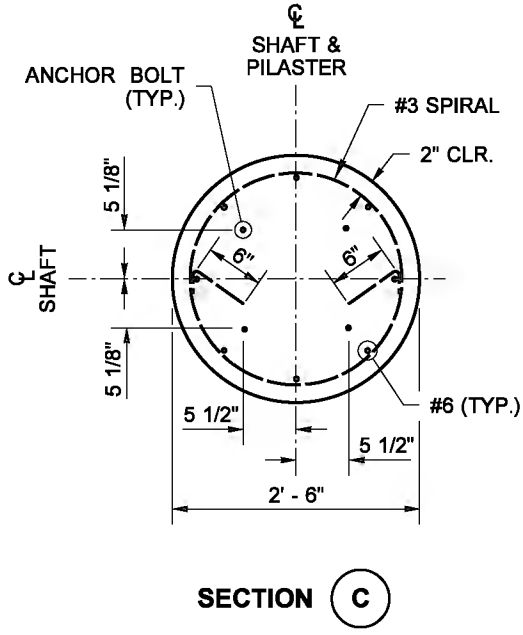
DRAWN BY: FERN LIDDELL



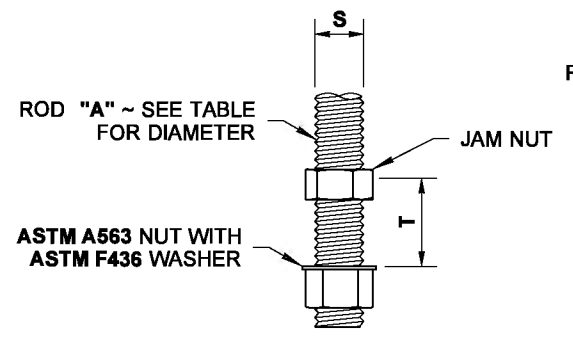
SHAFT TO PANEL CONNECTION
 EITHER OPTION AVAILABLE TO GROUT BLOCKOUTS, ANCHOR BOLTS, BASE PLATE TO LIMITS SHOWN



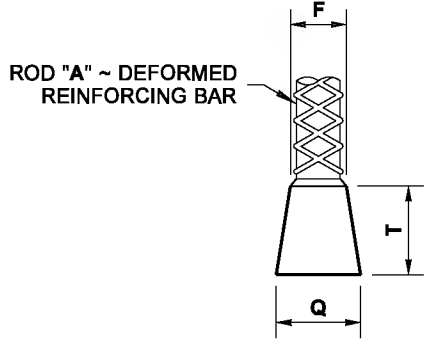
BASE PLATE DETAIL
 BASE PLATE, SHAFT AND TRAFFIC BARRIER NOT SHOWN FOR CLARITY



SECTION C



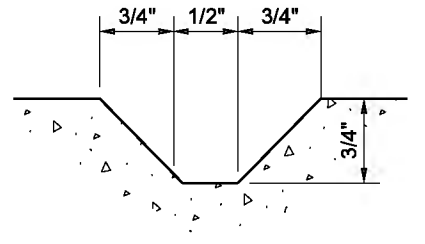
ROD "A" ANCHOR BOLT OPTION
 ASTM A706 GR 105 FOR ALL HEIGHTS "H"



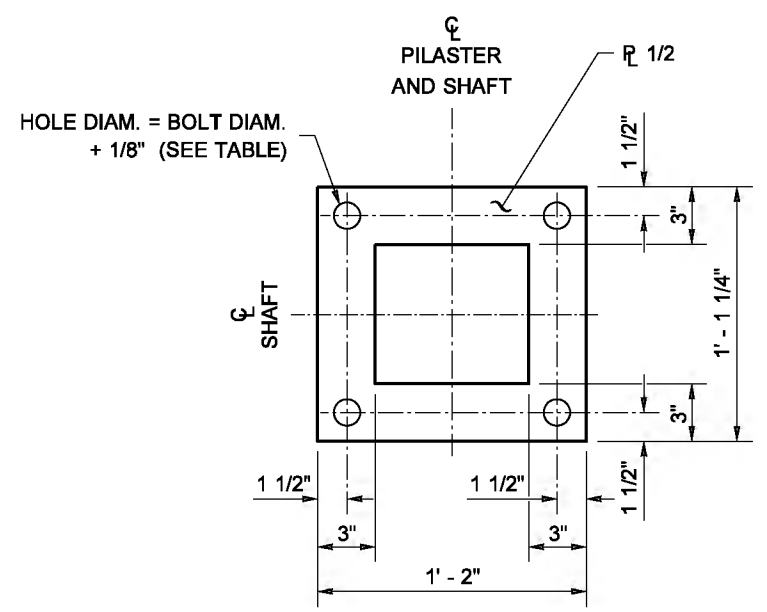
ROD "A" WEDGE HEAD OPTION
 ASTM A706 GR 80 AS ALLOWED PER TABLE, FOR HEIGHTS "H" ≤ 16' IN THE WEST AND HEIGHTS "H" ≤ 18' IN THE EAST

WIND AND SEISMIC LIMITATIONS			
LOCATION	WIND EXPOSURE	WIND VELOCITY (MPH)	PEAK SEISMIC GROUND ACCELERATION COEFFICIENT ON ROCK, SITE CLASS B (g)
WESTERN WASHINGTON	SPARSE SUBURBAN	100	0.45
EASTERN WASHINGTON	SPARSE SUBURBAN	80	0.19

FOUNDATION DESIGN	
SOIL TYPE	ANGLE OF INTERNAL FRICTION, $\bar{\alpha}$ (DEGREES)
D1	32
D2	38



DUMMY JOINT DETAIL
 CAST IN PLACE BARRIER OPTION
 (SEE NOTE 9 ~ SHEET 1)



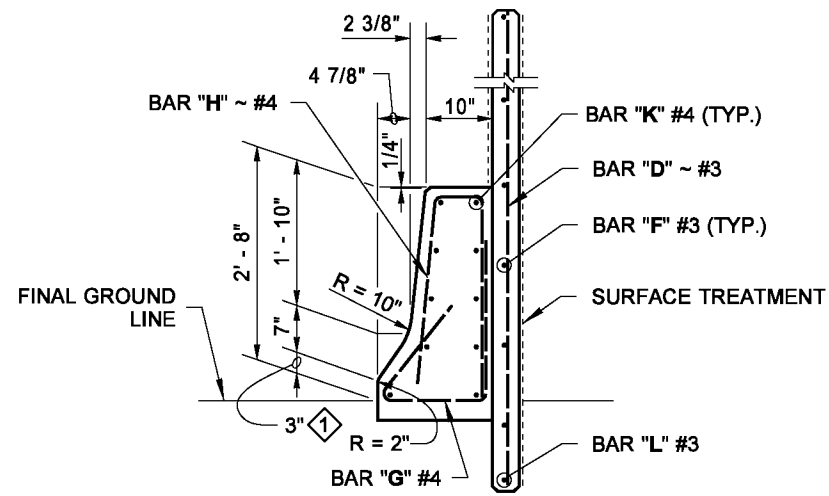
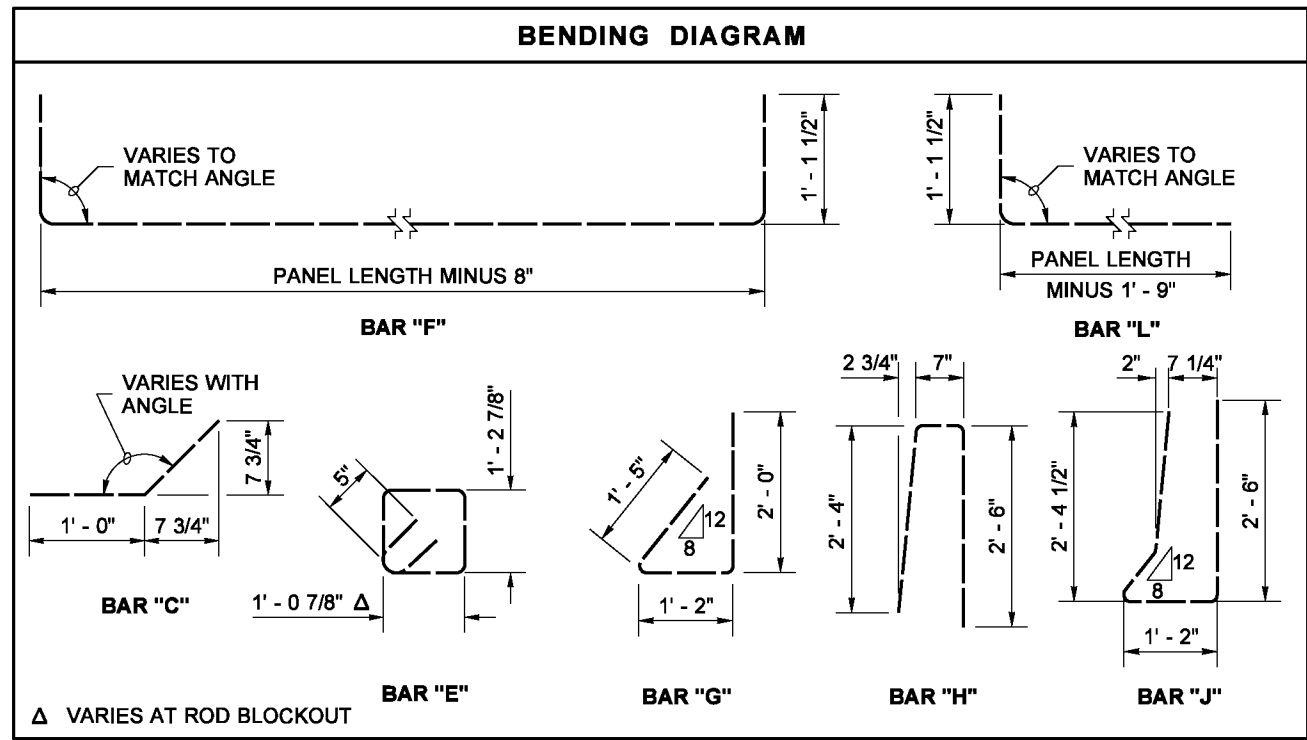
ANCHOR PLATE DETAIL



NOISE BARRIER WALL TYPE 14
STANDARD PLAN D-2.46-01

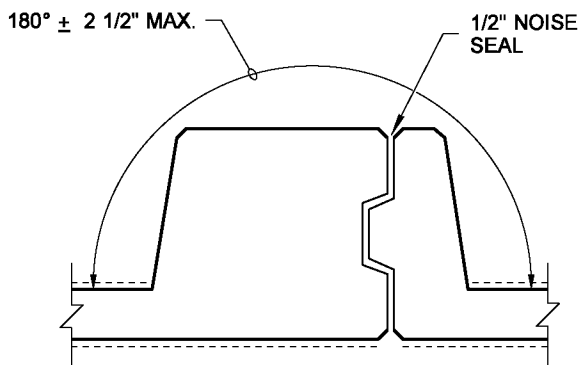
SHEET 2 OF 3 SHEETS
 APPROVED FOR PUBLICATION

DRAWN BY: FERN LIDDELL

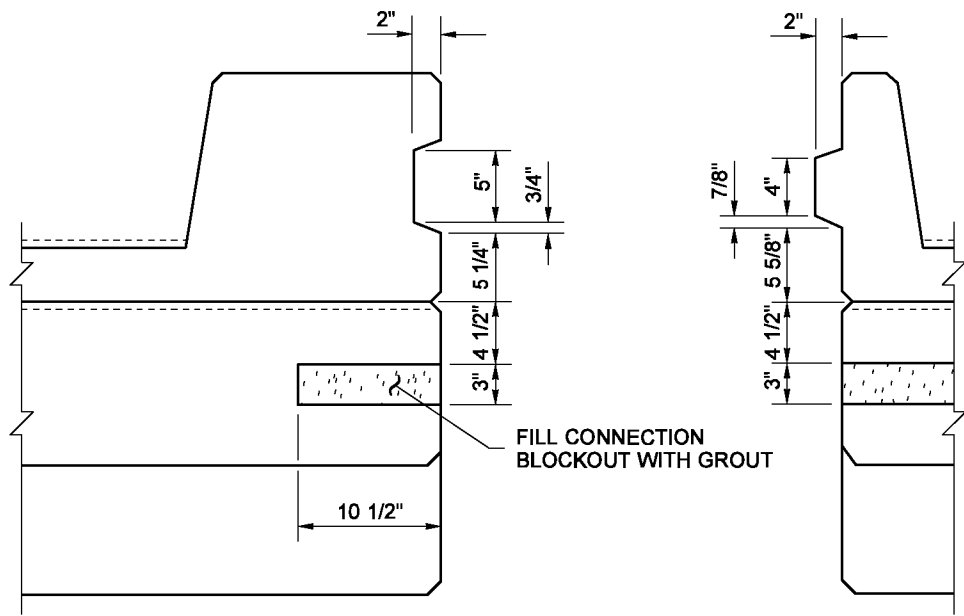


SECTION D

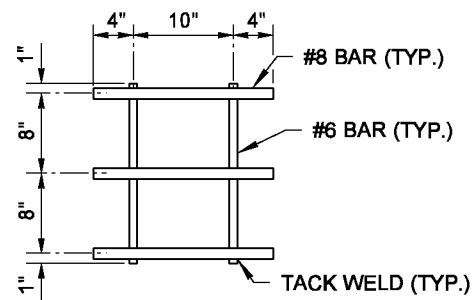
1 TOE HEIGHT MAY VARY ~ 2" MIN. TO 6" MAX.



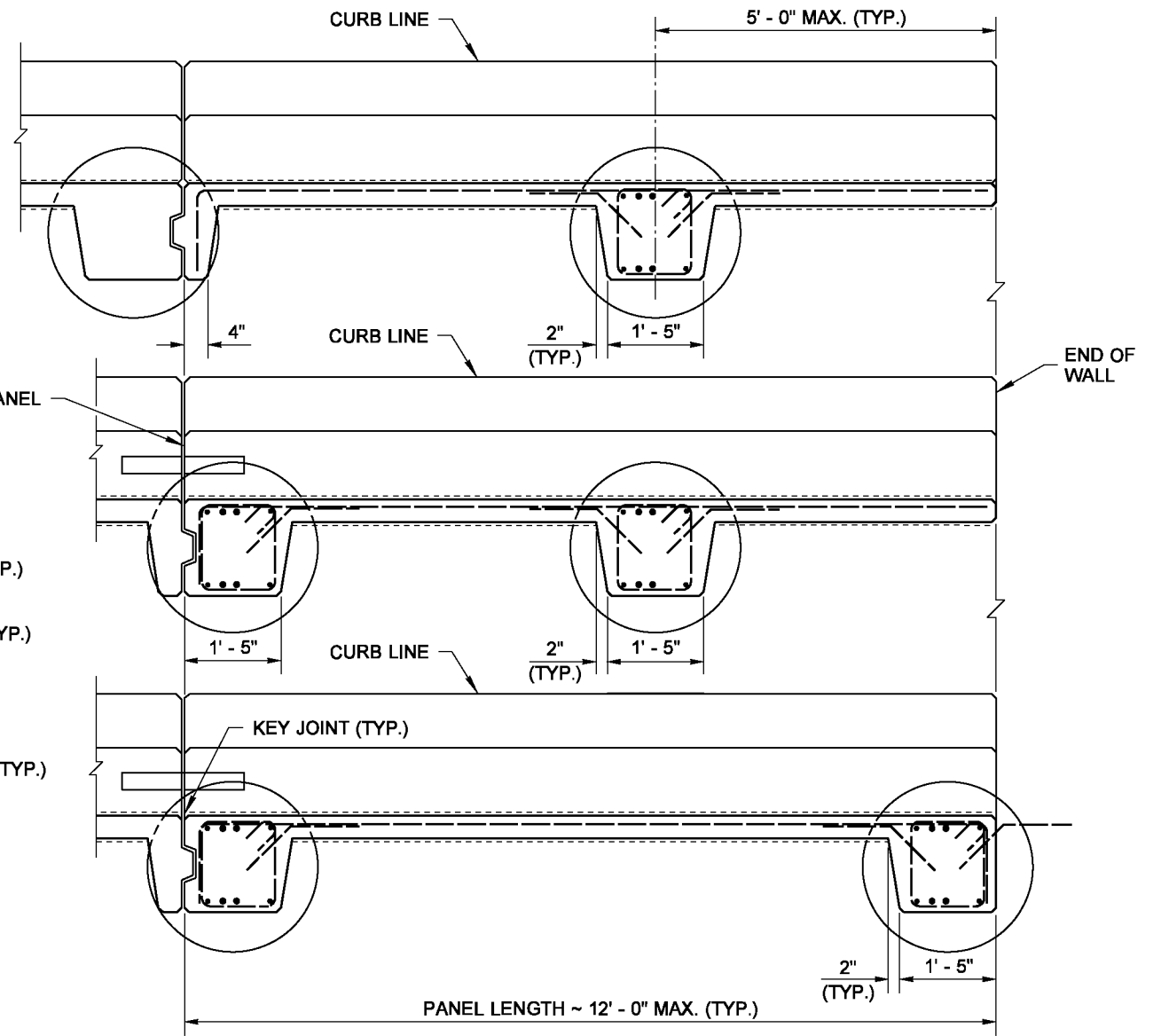
STANDARD PANEL ANGLE TOLERANCE



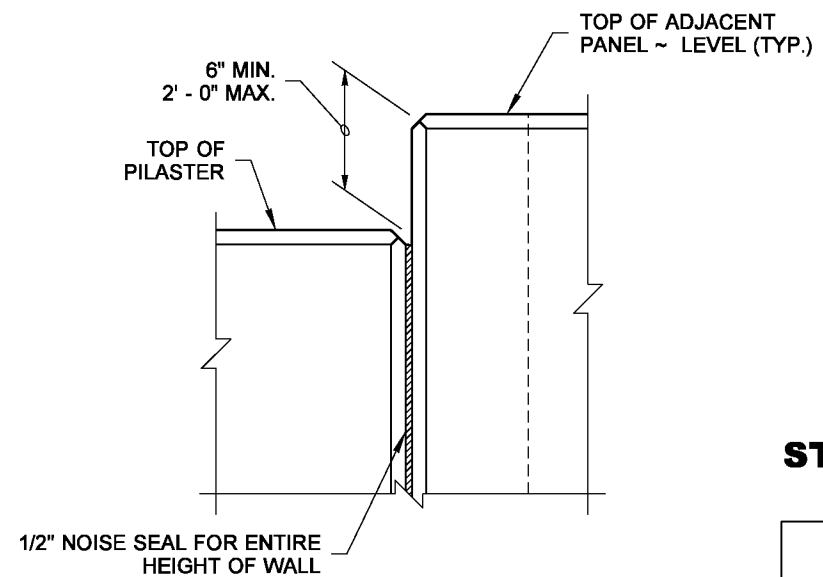
PLAN VIEW SHEAR-KEY DETAIL



REBAR GRID DETAIL



END PANEL OPTIONS



ELEVATION VIEW STEP DETAIL



NOISE BARRIER WALL TYPE 14
STANDARD PLAN D-2.46-01

SHEET 3 OF 3 SHEETS

APPROVED FOR PUBLICATION

STATE DESIGN ENGINEER
 Washington State Department of Transportation